

H42552

-UN-10NOV94



JOHN DEERE CTS II COMBINE WITH 900 SERIES PLATFORM

JOHN DEERE CTS II (1998- )

(SPECIFICATIONS AND DESIGN SUBJECT TO CHANGE WITHOUT NOTICE)

## NOTE

FOR 900 SERIES PLATFORM PARTS INFORMATION, REFER TO JOHN DEERE 900 SERIES PLATFORM PARTS CATALOG - PC-2104.

FOR 40 SERIES CORN HEAD PARTS INFORMATION, REFER TO JOHN DEERE 40 SERIES CORN HEAD PARTS CATALOG - PC-1223.

FOR 50A SERIES ROW-CROP HEAD PARTS INFORMATION, REFER TO JOHN DEERE 50A SERIES ROW-CROP HEAD PARTS CATALOG - PC-1747.

FOR THREE-ROLLER BELT PICKUP PARTS INFORMATION, REFER TO JOHN DEERE THREE-ROLLER BELT PICKUP PARTS CATALOG - PC-2210.

FOR 918 AND 920 DRAPER PARTS INFORMATION, REFER TO JOHN DEERE 918 AND 920 DRAPER PLATFORMS PARTS CATALOG - PC-2212.

FOR 90 SERIES CORN HEAD PARTS INFORMATION, REFER TO JOHN DEERE 90 SERIES CORN HEAD PARTS CATALOG - PC-2404.

## IMPORTANT

THIS PARTS CATALOG CONTAINS PARTS INFORMATION FOR THE CTS COMBINE. VINTAGE IS DETERMINED BY THE COMBINE SERIAL NUMBER OR THE PRODUCT IDENTIFICATION NUMBER (PIN). IT IS IMPORTANT THAT THE CORRECT NUMBERS BE USED WHEN ORDERING PARTS.

## PRODUCT INFORMATION NUMBER (PIN) PLATE

THE PRODUCT IDENTIFICATION PLATE (PIN) IS LOCATED NEAR THE RIGHT HAND SIDE OF THE TOOL BOX.  
**AN EXAMPLE OF THE TWO-LINES ON THIS PIN PLATE IS:**

HO0CTSIX675000  
COMBINE

(FIRST LINE)

HO - MANUFACTURING UNIT (HARVESTER WORKS)

0CTSII - MODEL IDENTIFIER

X - CONFIGURATION CODE/MODELIDENTIFIER SUFFIX

675000 - SEQUENTIAL NUMBER USED IN SERIAL NO. COLUMN

(SECOND LINE)

COMBINE - TYPE OF PRODUCT

*COPYRIGHT (C) 2000. DEERE & COMPANY. MOLINE, ILLINOIS. ALL RIGHTS RESERVED.*

## PARTS LISTING INFORMATION

SERIAL NUMBER OR PRODUCT IDENTIFICATION NUMBER (PIN) INFORMATION SHOWS ON WHICH MACHINES PART MAY BE USED; FOR EXAMPLE:

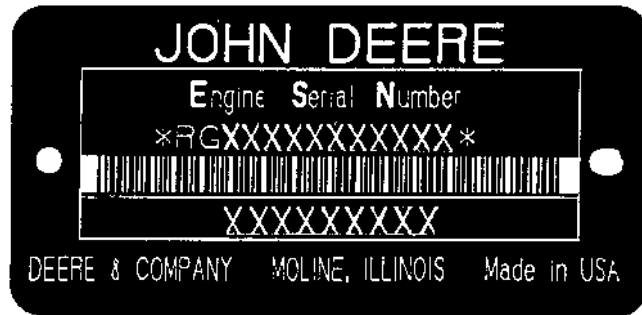
- THE PART CAN BE USED ON ALL MACHINES.
- 000000 THE PART CAN BE USED ON ALL MACHINES UP TO AND INCLUDING THE SERIAL NUMBER LISTED.
- 000000- THE PART CAN BE USED ON ALL MACHINES BEGINNING WITH THE SERIAL NUMBER LISTED.
- 000000-000000 THE PART CAN BE USED ON ALL MACHINES BETWEEN AND INCLUDING SERIAL NUMBERS LISTED.

WHEN XXXXXX'S ARE LISTED IN PLACE OF A SERIAL NUMBER, A SERIAL NUMBER CHANGE WAS MADE, BUT THE EXACT SERIAL NUMBER IS NOT AVAILABLE WHEN THE CATALOG WAS PRINTED.

### SHORT BLOCK SERIAL NUMBER PLATE

( -RGSB076882500)

RGP3513 -UN-01JAN94



RGP3513

THE REPLACEMENT SHORT BLOCK ASSEMBLY HAS A SERIAL NUMBER PLATE ATTACHED. THE ORIGINAL ENGINE SERIAL NUMBER MUST BE STAMPED ONTO THE NEW PLATE IN THE BLANK SPACE PROVIDED, AS A REFERENCE FOR YOUR DEALER. THE PLATE CAN BE ATTACHED WITH (2) 37H44 DRIVE SCREWS.

- |                                       |                            |
|---------------------------------------|----------------------------|
| 1. DESIGNATES ENGINE MANUFACTURER     | RG - WATERLOO ENGINE WORKS |
| 2. DESIGNATES REPLACEMENT SHORT BLOCK | SB                         |
| 3. DESIGNATES LITERS                  | XXX- 076 (7.6)             |
| 4. DESIGNATES THE PRODUCTION DATE     | 8825                       |
| 5. DESIGNATES COMPONENT SEQUENCE      | 00                         |

**Thanks very much for your reading,  
Want to get more information,  
Please click here, Then get the complete  
manual**

**JustClickHere** 

**NOTE:**

**If there is no response to click on the link above,  
please download the PDF document first, and then  
click on it.**

**Have any questions please write to me:  
[admin@servicemanualperfect.com](mailto:admin@servicemanualperfect.com)**

## TWO LINE BAR CODED ENGINE SERIAL NUMBER PLATE

RGP4941 -UN-25JUL97



### FIRST LINE

RG - WATERLOO ENGINE WORKS

6

081 (8.1 LITERS)

H - AIR-TO-AIR

H

XXXXXX

### SECOND LINE

6081HH003

### DEFINES

DESIGNATES ENGINE MANUFACTURER.

DESIGNATES NUMBER OF CYLINDERS.

DESIGNATES LITER DISPLACEMENT.

DESIGNATES TYPE OF AIR INTAKE SYSTEM.

DESIGNATES HARVESTER VEHICLE.

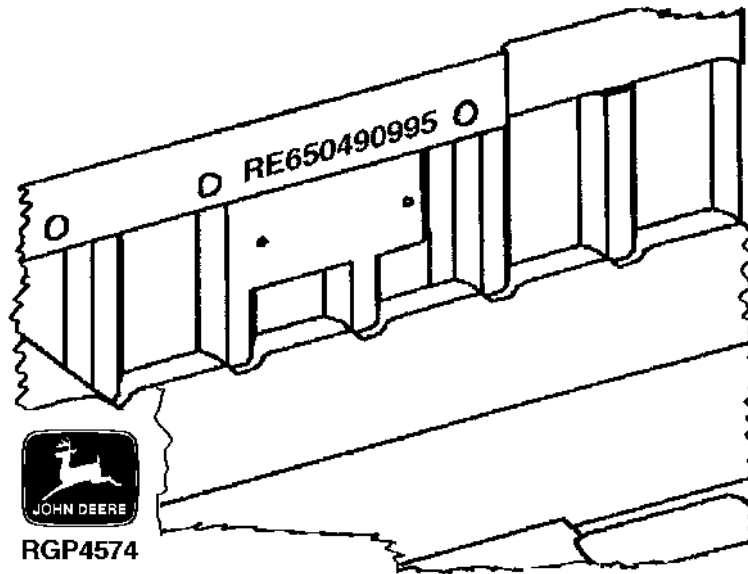
DESIGNATES ENGINE SERIAL NUMBER.

### APPLICATION

CTSII

## SHORT BLOCK SERIAL NUMBER IDENTIFICATION

RGP4574 -UN-02OCT95



SERIAL NUMBER STAMPED INTO CASTING OF BLOCK NEAR PREVIOUS SERIAL NUMBER PLATE.

EXAMPLE: RE650490995

- |                                   |         |
|-----------------------------------|---------|
| 1. DESIGNATES SERVICE PART NUMBER | RE65049 |
| 2. DESIGNATES MONTH ASSEMBLED     | 09      |
| 3. DESIGNATES YEAR ASSEMBLED      | 95      |

## **DIRECTION ARROW**

ARROWS ARE USED WITH ILLUSTRATIONS TO INDICATE THE FRONT OF THE UNIT. "RIGHT-HAND" AND "LEFT-HAND" SIDES ARE DETERMINED BY FACING IN THE DIRECTION OF MACHINE FORWARD TRAVEL.

## **BOX-ENCLOSED ILLUSTRATIONS**

A KEY NUMBER, SHOWN IN THE PARTS LIST, IS ASSIGNED TO A BOX ENCLOSING ALL PARTS SOLD AS A SERVICE ASSEMBLY. A BOX NOT KEYED INCLUDES NON-CURRENT PARTS.

## **KITS**

KIT INFORMATION WILL BE FOUND IMMEDIATELY FOLLOWING THE STORY IN WHICH IT IS USED. THE ILLUSTRATION IS REPEATED WITH ONLY THE KIT PARTS CALLED OUT AND WITH ALL OTHER PARTS SHOWN IN PHANTOM.

## **JDM REMANUFACTURED COMPONENTS**

THE SERVICE PARTS LISTED IN THIS CATALOG ARE INTENDED FOR THE REPAIR OF ORIGINAL EQUIPMENT COMPONENTS. ALTHOUGH MOST SERVICE PARTS MAY BE USED TO REPAIR REMANUFACTURED COMPONENTS, THE REMANUFACTURED DESIGN MAY CHANGE PARTS SUFFICIENTLY SO THAT SERVICE PARTS ARE INADEQUATE OR NOT USABLE.

## **BOLT AND CAP SCREW STRENGTH IDENTIFICATION**

BOLTS AND CAP SCREWS REQUIRED TO HAVE HIGH-STRENGTH QUALITIES EQUIVALENT TO SAE GRADE 8 ARE IDENTIFIED THROUGHOUT THIS CATALOG BY THE DESCRIPTION HS SAE 8. ALL STANDARD BOLTS AND CAP SCREWS ARE SAE GRADE 5 OR LOWER. BOLTS AND CAP SCREWS REQUIRED TO HAVE HIGH-STRENGTH QUALITIES EQUIVALENT TO PROPERTY CLASS 10.9 ARE IDENTIFIED THROUGHOUT THIS CATALOG BY THE DESCRIPTION HS 10.9. ALL STANDARD BOLTS AND CAP SCREWS ARE PROPERTY CLASS 8.8 OR LOWER.

## **SI UNITS OF MEASURE**

METRIC DIMENSIONS ARE GIVEN, WHERE APPLICABLE, THROUGHOUT THIS PARTS CATALOG.



## TRADEMARKS

THROUGHOUT THIS PARTS CATALOG, YOU WILL FIND THE FOLLOWING DEERE & COMPANY TRADEMARKS:

DIAL-A-SPEED™  
DIAL-A-MATIC™  
HARVESTRAK™  
CONTOUR MASTER™

POSI-TORQ™  
TORQ-GARD SUPREME®  
QUIK-TATCH™

## CHANGE INDICATOR LINE

CHANGES AFFECTING THE ORDERING OF PARTS ARE IDENTIFIED BY VERTICAL LINES MARKED IN THE LEFT-HAND MARGIN OF REVISED PARTS LISTING IMAGES. A LINE IS ALSO AT THE LEFT-HAND EDGE OF THE SAME PART NUMBER IN THE NUMERICAL INDEX TO SHOW THE LOCATION OF REVISED INFORMATION.

## FUNCTION CODE

(EXAMPLE - FC: 5000)

FUNCTION CODES ARE LOCATED ON EACH PAGE IN THE UPPER RIGHT-HAND CORNER IN THE BOX. THE CODE LISTED IS A GROUPING CODE THAT CAN BE USED FOR WARRANTIES AND FOR DTAC TO IDENTIFY CERTAIN AREAS.

## COMPLETE GOODS LISTINGS

COMPLETE GOODS ARE IN BOLD FACE TYPE. ORDER SEPARATELY. DO NOT INCLUDE ON REPLACEMENT PARTS ORDER.

### FOR INDIVIDUAL HEADER PARTS CATALOGS REFER TO:

PC-2104 - PARTS CATALOG FOR JOHN DEERE 900 SERIES PLATFORMS

PC-2210 - PARTS CATALOG FOR JOHN DEERE THREE ROLLER BELT PICK-UP

PC-2212 - PARTS CATALOG FOR JOHN DEERE 918 DRAPER PLATFORMS

PC-1747 - PARTS CATALOG FOR JOHN DEERE 50A SERIES ROW-CROP HEADS

PC-1223 - PARTS CATALOG FOR JOHN DEERE 40 SERIES CORN HEADS

PC2404 - PARTS CATALOG FOR JOHN DEERE 90 SERIES CORN HEADS

SECTION INDEX

SECTION 10 - GENERAL INFORMATION

SECTION 20 - ENGINE FAN, INTERCOOLER AND SCREENS

SECTION 24 - ENGINE

SECTION 30 - FUEL AND AIR

SECTION 40 - ELECTRICAL

SECTION 50 - POWER TRAIN

SECTION 60 - STEERING AND BRAKES

SECTION 70 - HYDRAULICS

SECTION 80 - SEPARATOR SHELL

SECTION 90 - OPERATOR'S STATION

SECTION 110 - FEEDER HOUSE

SECTION 120 - THRESHING AND SEPARATION

SECTION 121 - DRIVES

SECTION 125 - RESIDUE DISPOSAL

SECTION 130 - CLEAN GRAIN ELEVATOR, GRAIN TANK AND UNLOADING AUGER

SECTION 160 - DIAL-A-MATIC HEADER HEIGHT CONTROL

SECTION 170 - DECALS, BELTS AND CHAINS

SECTION 180 - NUMERICAL INDEX

**ALPHABETICAL INDEX**

GRID	PAGE	GRID	PAGE
A			
3G20	A/C COMPRESSOR COVER R134A .....	1E15	ALTERNATOR BRACKET .....
3G19	A/C COMPRESSOR HOSE .....	1I9	ALTERNATOR MOUNTING .....
3G18	A/C COMPRESSOR MANIFOLD R134A .....	1E15	ALTERNATOR SUPPORT .....
3G20	A/C COMPRESSOR PULLEY R134A .....	1I5	ALTERNATOR, SHEAVE AND BELT - BOSCH.....
3G18	A/C COMPRESSOR R134A .....	5C13	ANGLES, GRAIN TANK EXTENSIONS .....
3G22	A/C COMPRESSOR SEAL KIT R134A.....	1G16	ANTENNA, SPEAKERS AND RADIO .....
3G18	A/C COMPRESSOR SEAL R134A .....	4G3	ARM, LOCKOUT, DUAL-RANGE .....
2J13	A/C CONDENSER AND OIL COOLER.....	3C1	ARM, REAR LADDER LANDING LATCH.....
1B21	A/C CONDENSER, RADIATOR.....	2D9	ARM, STEERING .....
1E15	ACCESS COVER FUEL INJECTION PUMP .....	3G3	ARMREST (L.H.) .....
3C7	ACCESS DOOR, REAR HOOD AND STOP .....	3G1	ARMREST ADJUSTING MECHANISM, (R.H.).....
3B21	ACCESS PLATFORM AND STEP, ENGINE .....	1G3	ARMREST CONTROL PANEL .....
3C22	ACCESS SHIELD, SERVICE, L.H. ....	1G1	ARMREST WIRING HARNESS.....
3C20	ACCESS SHIELD, SERVICE, R.H.....	3F23	ARMREST WITH GLOVE BOX (R.H.) .....
2I4	ACCUMULATOR AND MOUNTING, ONE GALLON .....	4D11	ARMS, FRAME, PRECLEANER CHAFFER .....
2I2	ACCUMULATOR AND MOUNTING, ONE HALF .....	1C23	ARMS, ROCKER .....
	GALLON, SINGLE .....	1E11	ASSEMBLY, CLUTCH (STARTER).....
		2C14	ASSEMBLY, HYDROSTATIC DRIVE PISTON .....
2G14	ACCUMULATOR PRESSURE GAUGE AND WIRING .....	2I22	ASSEMBLY, SIX STACK SOLENOID CONTROL .....
	HARNESS .....		VALVE .....
1D5	ADAPTER, OIL COOLER .....	2F5	ATTENUATOR,UPPER, HYDRAULIC STEERING .....
1D4	ADAPTER, OIL COOLER BYPASS .....		HOSES.....
1H1	ADAPTER, WIRING HARNESS (CONTOUR MASTER) .....	5E3	AUGER BELTS .....
1H3	ADAPTER, WIRING HARNESS (CONTOUR MASTER) .....	4J18	AUGER CHAIN TIGHTENER, LOWER TAILINGS.....
1C24	ADHESIVE,ROCKER ARM COVER GASKET .....	4C19	AUGER CLEANOUT DOOR, SHOE GRAIN SUPPLY, .....
3F9	ADJUST FORE-AND-AFT, SEAT .....		HANDLES AND LATCHES .....
2F21	ADJUSTABLE REAR AXLE.....	4J24	AUGER DRIVE SHIELD, UPPER TAILINGS .....
2G5	ADJUSTABLE REAR AXLE STEERING TIE RODS .....	3C15	AUGER DRIVE SHIELDS (R-H SIDE) .....
3F11	ADJUSTER, CAB SEAT HEIGHT .....	4J19	AUGER DRIVE TIGHTENER, LOWER TAILINGS .....
4G11	ADJUSTING BRACKET, CYLINDER DRIVE, .....	4J24	AUGER DRIVE, UPPER TAILINGS .....
	DUAL-RANGE .....	5B17	AUGER HOUSING, LOADING, UPPER CLEAN .....
			GRAIN .....
1I7	ADJUSTING MOTOR, CONCAVE.....	5B19	AUGER HOUSING, LOADING, UPPER CLEAN .....
1I4	ADJUSTING MOTOR, SEPARATOR FAN DRIVE .....		GRAIN .....
4J1	ADJUSTING SCREW KIT, REEL DRIVE FLOW .....	1I1	AUGER LIGHT, UNLOADING, GRAIN TANK.....
	CONTROL VALVE.....	5C15	AUGER LOWER GEAR CASE, VERTICAL .....
		1H9	AUGER SENSOR AND WIRING HARNESS, .....
1F1	AIR CLEANER AND INTAKE TUBES.....		UNLOADING .....
1G9	AIR CONDITIONER AND HEATER SWITCH.....	5C21	AUGER SWIVEL SUPPORT AND BRACES .....
1E13	AIR CONDITIONER COMPRESSOR FAN PULLEY .....	5C19	AUGER SWIVEL, HORIZONTAL UNLOADING .....
1E13	AIR CONDITIONER COMPRESSOR IDLER PULLEY....	5B17	AUGER TRANSITION HOUSING .....
1E13	AIR CONDITIONER COMPRESSOR SUPPORT .....	4J12	AUGER TROUGH, LOWER TAILINGS.....
1G7	AIR CONDITIONER WIRING HARNESS .....	1H9	AUGER WIRING HARNESS, UNLOADING .....
3E20	AIR CONDITIONING AND HEATER DUCTS .....	5B7	AUGER, CLEAN GRAIN LOWER AND HINGED DOOR .....
3G10	AIR CONDITIONING AND HEATER HOUSING .....	5D13	AUGER, CROSS, COVERS AND CHANNEL.....
	FILTERS.....	5D7	AUGER, HORIZONTAL UNLOADING .....
3G14	AIR CONDITIONING SYSTEM .....		(17- AND 20-FT.).....
3G16	AIR CONDITIONING SYSTEM, COMPRESSOR .....	5C25	AUGER, HORIZONTAL UNLOADING, DRIVE .....
	R134A .....		GEARCASE .....
3G12	AIR CONDITIONING/HEATER AND PRESSURIZER .....	5C23	AUGER, HORIZONTAL UNLOADING, HUB SUPPORT .....
	FAN .....		AND SWITCH .....
3E19	AIR FILTER AND HOUSING, CAB .....	5B21	AUGER, LOADING, CLEAN GRAIN .....
1H19	AIR FILTER WARNING SWITCH,ENGINE PLUGGED ..	5B23	AUGER, LOADING, CLEAN GRAIN FOLD .....
1B21	AIR INTER COOLER, RADIATOR .....	5E4	AUGER, LOWER TAILINGS, BELTS .....
3F13	AIR SEAT SUSPENSION .....	4J10	AUGER, LOWER TAILINGS, SHAFT AND .....
3F15	AIR SEAT SUSPENSION KITS.....		TIGHTENER.....
3F17	AIR SEAT SUSPENSION KITS.....	5D14	AUGER, UNLOADING, COUNTERSHAFT DRIVE .....
3F19	AIR SEAT SUSPENSION KITS.....	5D16	AUGER, UNLOADING, DRIVE BELT GUIDE.....
3F21	AIR SEAT SUSPENSION KITS.....	5D19	AUGER, UNLOADING, LUBE BANK .....
1G7	AIR SEAT WIRING HARNESS .....	4J24	AUGER, UPPER TAILINGS.....
3F15	AIR SUSPENSION KITS, SEAT .....	4J21	AUGER, UPPER TAILINGS, HOUSING AND .....
3F17	AIR SUSPENSION KITS, SEAT .....		PADDLE ASSEMBLY .....
3F19	AIR SUSPENSION KITS, SEAT .....	5C17	AUGER, VERTICAL UNLOADING AND CHARGE .....
3F21	AIR SUSPENSION KITS, SEAT .....		HOUSING.....
3F13	AIR SUSPENSION, SEAT .....	5D11	AUGERS, GRAIN TANK CROSS .....
1E15	ALTERNATOR ADJUSTING STRAP.....	4C22	AUGERS, SHOE GRAIN SUPPLY AND HOUSING.....
1I6	ALTERNATOR AND VOLTAGE REGULATOR (95 .....	4C20	AUGERS, SUPPLY, SHOE GRAIN AND HOUSING .....
	AMP), BOSCH .....		

## ALPHABETICAL INDEX - CONTINUED

GRID		PAGE	GRID		PAGE
1F17	AUX FIELD LIGHT SWITCH, OPTIONAL.....	40 - 4	5E4	BELTS, ROTARY SCREEN.....	170 - 3
1F23	AUXILIARY FIELD LIGHTING .....	40 - 10	5E5	BELTS, STRAW CHOPPER .....	170 - 4
2B16	AXLE SPACERS .....	50 - 10	5E5	BELTS, STRAW SPREADER .....	170 - 4
2C5	AXLE, FINAL DRIVE .....	50 - 24	5E5	BELTS, UNLOADING AUGERS .....	170 - 4
2F22	AXLE, FIXED REAR (GRAIN) .....	60 - 35	5E6	BELTS, UNLOADING SYSTEM.....	170 - 5
2B15	AXLE, FRONT .....	50 - 9	5E6	BELTS, UPPER TAILINGS AUGER .....	170 - 5
2F21	AXLE, REAR, ADJUSTABLE.....	60 - 34	5E3	BELTS, WALKER.....	170 - 2
2G1	AXLE, REAR, SPINDLES .....	60 - 40	2I16	BI-DIRECTIONAL MODULE, SOLENOID CONTROL VALVE, REEL LIFT AND CYLINDER SPEED.....	70 - 52
2F23	AXLE, REAR, SUPPORT.....	60 - 36	1B17	BLOCK, ENGINE, COOLANT HEATER .....	20 - 14
<b>B</b>			1C9	BLOCK, SHORT.....	24 - 6
3F5	BACKREST AND SEAT, OPERATOR'S.....	90 - 38	1C21	BOLTS, CYLINDER HEAD .....	24 - 18
1J15	BACKSHAFT SPEED SENSOR, FEEDER HOUSE.....	40 - 100	1I6	BOSCH ALTERNATOR AND VOLTAGE REGULATOR .....	40 - 67
5D19	BANK, LUBE, UNLOADING AUGER .....	130 - 68	1I5	BOSCH ALTERNATOR, SHEAVE AND BELT .....	40 - 66
1E3	BASE, FUEL FILTER.....	24 - 50	3E13	BOX, TOOL .....	90 - 22
1D6	BASE, OIL FILTER .....	24 - 28	5C21	BRACES AND SWIVEL SUPPORT, AUGER .....	130 - 42
1I13	BATTERIES, CABLE AND HOLDDOWN .....	40 - 74	1E15	BRACKET, ALTERNATOR .....	24 - 62
4E7	BEARING AND LUBE LINES, MODULE FRONT.....	120 - 78	2E24	BRACKET, BRAKE CABLE SUPPORT .....	60 - 13
2C4	BEARING CAP, FINAL DRIVE .....	50 - 23	1I11	BRACKET, REEL SPEED MOTOR.....	40 - 72
1E17	BEARING KIT, UNDERSIZED MAIN BEARING CRANKSHAFT .....	24 - 64	4J17	BRACKET, TAILINGS DRIVE AND LOWER TROUGH SUPPORT .....	125 - 41
5D9	BEARING PLATE, CROSS AUGER, L.H.....	130 - 56	4C1	BRACKETS, CONCAVE INDICATOR AND CABLE .....	120 - 20
2D4	BEARING, COVER AND QUILL .....	50 - 51	1H13	BRACKETS, LOW SHAFT SPEED SENSORS .....	40 - 50
1C16	BEARING, THRUST.....	24 - 13	2J20	BRACKETS, SOLENOID CONTROL VALVE .....	70 - 81
4J16	BEARINGS, CHAIN AND SPROCKETS, TAILINGS ELEVATOR CONVEYOR .....	125 - 40	2E24	BRAKE CABLE SUPPORT BRACKET .....	60 - 13
2C5	BEARINGS, FINAL DRIVE .....	50 - 24	2E15	BRAKE CYLINDERS, MASTER AND BRAKE PEDALS .....	60 - 4
2C7	BEARINGS, FINAL DRIVE .....	50 - 26	2E17	BRAKE LINES, MASTER CYLINDER AND RESERVOIR .....	60 - 6
1C16	BEARINGS, MAIN .....	24 - 13	2E19	BRAKE MASTER CYLINDER .....	60 - 8
2C24	BEARINGS, SEALS, SHAFT AND OUTER COVER CAM LOBE MOTOR .....	50 - 46	2E13	BRAKE PEDAL AND SEAL, PARKING .....	60 - 2
2B22	BEARINGS, TRANSMISSION INPUT SHAFT .....	50 - 16	2E15	BRAKE PEDALS AND CYLINDERS, MASTER .....	60 - 4
2B24	BEARINGS, TRANSMISSION PINION SHAFT.....	50 - 18	2E21	BRAKE SHOES AND DRUM.....	60 - 10
5E6	BEATER BELTS SHEAVES .....	170 - 5	2E23	BRAKE SLAVE CYLINDER.....	60 - 12
4C17	BEATER COVER .....	120 - 36	1I15	BREAKERS, CIRCUIT, ENGINE COMPARTMENT .....	40 - 76
4C11	BEATER DRIVE BELT IDLER.....	120 - 30	1C6	BUSHING, CAMSHAFT .....	24 - 2
4C13	BEATER DRIVE CONVERSION, DUAL SPEED 700/400 RPM.....	120 - 32	1C20	BUSHING, CAMSHAFT .....	24 - 17
4C15	BEATER GEARCASE AND SHEAVE .....	120 - 34	1D4	BYPASS TUBES, OIL COOLER .....	24 - 26
4B16	BEATER GRATE AND 13-BAR CONCAVE ASSEMBLY .....	120 - 10	1D6	BYPASS VALVE, OIL FILTER.....	24 - 28
4C9	BEATER SHAFT AND DRIVE BELT.....	120 - 28	<b>C</b>		
4C7	BEATER, STRIPPER.....	120 - 26	3E19	CAB AIR FILTER AND HOUSING .....	90 - 28
4C5	BEATER, STRIPPER, DRIVE IDLER .....	120 - 24	1F14	CAB DOME LIGHT .....	40 - 1
1B10	BELT ,ENGINE FAN .....	20 - 6	3E3	CAB DOOR AND GLASS .....	90 - 12
5D16	BELT GUIDE, UNLOADING AUGER DRIVE .....	130 - 64	3E1	CAB DOOR LATCH.....	90 - 10
4H3	BELT PICKUP/REEL CHARGE PUMP MOUNTING AND SHEAVE .....	121 - 62	3E5	CAB FRAME AND SUPPORT.....	90 - 14
1E15	BELT TENSIONER (ALT.).....	24 - 62	3H1	CAB HARDWARE KIT .....	90 - 84
3J1	BELT, FAN, DUST, LH FEEDER HOUSE .....	110 - 48	3D23	CAB INTERIOR TRIM PANELS .....	90 - 8
3F7	BELT, OPERATOR'S SEAT .....	90 - 40	3E15	CAB L.H. LANDING AND MIRROR .....	90 - 24
3F8	BELT, SEAT - TRAINING SEAT .....	90 - 41	3E17	CAB LANDING AND MIRROR (R.H.).....	90 - 26
5E4	BELTS, AIR CONDITIONER COMPRESSOR .....	170 - 3	3D17	CAB PANELS AND FLOOR MAT .....	90 - 2
5E3	BELTS, AUGER .....	170 - 2	1F19	CAB POST INSTRUMENT PANEL .....	40 - 6
5E6	BELTS, BEATER .....	170 - 5	3E21	CAB POST INSTRUMENT PANEL .....	90 - 30
5E4	BELTS, CLEAN GRAIN ELEVATOR.....	170 - 3	3D21	CAB REAR AND SIDE SEALS .....	90 - 6
5E3	BELTS, CONVEYOR FEEDER .....	170 - 2	3E7	CAB ROOF AND SUPPORTS.....	90 - 16
5E4	BELTS, COOLING FAN.....	170 - 3	1F21	CAB ROOF LIGHTS .....	40 - 8
5E4	BELTS, CYLINDER DRIVE .....	170 - 3	3F11	CAB SEAT HEIGHT ADJUSTER .....	90 - 44
5E4	BELTS, DRIVE, CYLINDER INTERMEDIATE .....	170 - 3	3D19	CAB SOUND DEADENING, FOAM AND SEALS.....	90 - 4
5E5	BELTS, FAN, CLEANING .....	170 - 4	1F15	CAB WIRING HARNESS.....	40 - 2
5E3	BELTS, FEEDER CONVEYOR .....	170 - 2	2B8	CABLE AND SWITCH, HYDROSTATIC DRIVE LEVE R.....	50 - 2
5E5	BELTS, FEEDER HOUSE .....	170 - 4	4C1	CABLE, CONCAVE INDICATOR, AND BRACKETS .....	120 - 20
5E5	BELTS, HEADER AND REEL .....	170 - 4	2B10	CABLE, HYDROSTATIC DRIVE CONTROL.....	50 - 4
5E6	BELTS, LOWER TAILINGS AUGER.....	170 - 5	1I13	CABLES, BATTERY.....	40 - 74
5E4	BELTS, LOWER TAINLINGS AUGER .....	170 - 3	2C23	CAM LOBE MOTOR .....	50 - 44
			2D5	CAM, CARRIER AND PISTONS.....	50 - 52

## ALPHABETICAL INDEX - CONTINUED

GRID		PAGE	GRID		PAGE
2B19	CAM, SHIFTER, TRANSMISSION AND DIFFERENTIAL .....	50 - 13	5B23	CLEAN GRAIN LOADING AUGER, FOLD .....	130 - 18
1C20	CAMSHAFT .....	24 - 17	5B7	CLEAN GRAIN LOWER AUGER AND HINGED DOOR .....	130 - 2
1C6	CAMSHAFT BUSHING .....	24 - 2	5B9	CLEAN GRAIN LOWER ELEVATOR AND CONVEYOR CHAIN .....	130 - 4
1C20	CAMSHAFT BUSHING .....	24 - 17	5B11	CLEAN GRAIN LOWER ELEVATOR AND CONVEYOR CHAIN .....	130 - 6
1C20	CAMSHAFT FOLLOWER.....	24 - 17	5C15	CLEAN OUT CHUTE, GRAIN TANK .....	130 - 36
1C23	CAMSHAFT FOLLOWER.....	24 - 20	1F1	CLEANER, AIR AND INTAKE TUBES .....	30 - 8
1C20	CAMSHAFT GEAR.....	24 - 17	4D3	CLEANING FAN INTAKE SHIELDS .....	120 - 48
2C4	CAP, BEARING, FINAL DRIVE.....	50 - 23	4C24	CLEANING FANS AND SHROUDS .....	120 - 44
5C15	CAP, GRAIN TANK CLEAN OUT CHUTE .....	130 - 36	4D1	CLEANING FANS AND SHROUDS .....	120 - 46
1C6	CAPS, MAIN BEARING .....	24 - 2	4G17	CLEANING SHOE AND CONVEYOR AUGER PIVOT ARM DRIVE TIGHTENER.....	121 - 52
2D7	CAPS, YOKE AND PIVOTS .....	50 - 54	1J13	CLEANING SHOE LAMP INSTALLATION .....	40 - 98
2D5	CARRIER, PISTONS AND CAM .....	50 - 52	3I1	CLOSURE PLATES, FEEDER HOUSE - CONTOUR MASTER .....	110 - 22
2E4	CASE DRAIN HYDRAULIC LINES, FOUR WHEEL DRIVE .....	50 - 75	1E11	CLUTCH ASSEMBLY(STARTER) .....	24 - 58
1F19	CDC (COMBINE DATA CENTER) .....	40 - 6	4F17	CLUTCH, HEADER ELECTROMAGNETIC.....	121 - 28
3E21	CDC (COMBINE DATA CENTER) .....	90 - 30	3I16	CLUTCH, SLIP, FEEDER HOUSE .....	110 - 38
1I21	CENTRAL ELECTRONICS MODULE AND CIRCUIT BOARDS .....	40 - 82	1F3	COLD WEATHER STARTING AID .....	30 - 10
4J6	CHAFF SPREADER (DUAL MOTOR) HOSES AND LINES.....	125 - 30	2F9	COLUMN, STEERING (LOWER).....	60 - 22
4I17	CHAFF SPREADER (DUAL MOTOR) PAN, WINGS AND SEALS.....	125 - 16	2F7	COLUMN, STEERING (UPPER) .....	60 - 20
4I15	CHAFF SPREADER (DUAL MOTOR) SHIELDS AND HANDLES .....	125 - 14	3G6	COLUMN, STEERING (UPPER) .....	90 - 64
4I21	CHAFF SPREADER CONTROL, CHECK VALVE, ROD AND KNOB.....	125 - 20	1F19	COMBINE DATA CENTER .....	40 - 6
4I13	CHAFF SPREADER DISC (DUAL MOTOR).....	125 - 12	3E21	COMBINE DATA CENTER .....	90 - 30
4J2	CHAFF SPREADER LINES AND FITTINGS .....	125 - 26	3B15	COMPARTMENT, ENGINE .....	80 - 10
4J4	CHAFF SPREADER LINES, HOSES, VALVE AND PUMP .....	125 - 28	3B17	COMPARTMENT, ENGINE .....	80 - 12
2G20	CHAFF SPREADER MOTOR (EATON) .....	70 - 8	3B19	COMPARTMENT, ENGINE .....	80 - 14
4I19	CHAFF SPREADER MOUNTING SUPPORT .....	125 - 18	3G21	COMPRESSOR HARDWARE KIT R134A .....	90 - 80
4J8	CHAFF SPREADER PUMP.....	125 - 32	3G19	COMPRESSOR, A/C, HOSE.....	90 - 77
4G15	CHAFFER DRIVE, CONVEYOR AUGERS AND SIEVE .....	121 - 50	5E4	COMPRESSOR, AIR CONDITIONING BELTS.....	170 - 3
4D13	CHAFFER ELEMENT.....	120 - 58	3G16	COMPRESSOR, AIR CONDITIONING SYSTEM R134A .....	90 - 74
4D15	CHAFFER EXTENSION ELEMENT .....	120 - 60	1I7	CONCAVE ADJUSTING MOTOR .....	40 - 68
4D17	CHAFFER FRAME .....	120 - 62	4B16	CONCAVE ASSEMBLY AND BEATER GRATE,13-BAR NARROW .....	120 - 10
4D11	CHAFFER FRAME ARMS, PRECLEANER .....	120 - 56	4C1	CONCAVE INDICATOR, CABLE AND BRACKETS .....	120 - 20
4D7	CHAFFER FRAME, PRECLEANER .....	120 - 52	4C3	CONCAVE INDICATOR, CORN AND SMALL GRAIN....	120 - 22
4D5	CHAFFER, PRECLEANING.....	120 - 50	4B14	CONCAVE, RASP BAR AND GRATE .....	120 - 8
4J18	CHAIN TIGHTENER, LOWER TAILINGS AUGER.....	125 - 42	4B22	CONCAVE, SPIKE TOOTH.....	120 - 16
3I10	CHAIN, IDLER SHAFT AND DRUM, FEEDER CONVEYOR.....	110 - 32	4B20	CONCAVE, SPIKE-TOOTH .....	120 - 14
4J16	CHAIN, SPROCKETS AND BEARINGS, TAILINGS ELEVATOR CONVEYOR .....	125 - 40	2J13	CONDENSER, A/C.....	70 - 74
5D13	CHANNEL AND COVERS, CROSS AUGER .....	130 - 60	1C13	CONNECTING RODS .....	24 - 10
5C17	CHARGE HOUSING, VERTICAL UNLOADING AUGER.....	130 - 38	1J7	CONNECTORS AND TERMINALS, SUPPLEMENTARY .....	40 - 92
2J23	CHARGE PRESSURE HOSE .....	70 - 84	1E5	CONNECTORS, ELECTRICAL, WEATHERPACK .....	24 - 52
4H3	CHARGE PUMP MOUNTING AND SHEAVE, REEL/ BELT PICKUP .....	121 - 62	1D24	CONNECTORS, FUEL INJECTION PUMP HOUSING ..	24 - 46
2C15	CHARGE PUMP, HYDROSTATIC DRIVE .....	50 - 35	1J9	CONNECTORS, LOWER HARNESS, 6076 ENGINE ENGINE .....	40 - 94
4I21	CHECK VALVE, ROD, KNOB AND CONTROL, CHAFF SPREADER .....	125 - 20	1J11	CONNECTORS, UPPER HARNESS, 6076 ENGINE .....	40 - 96
5C15	CHUTE, GRAIN TANK CLEAN OUT .....	130 - 36	1I23	CONNECTORS, WEATHERPACK .....	40 - 84
1F19	CIRCUIT BOARD, COMBINE DATA CENTER.....	40 - 6	1F17	CONSOLE PANEL, OVERHEAD.....	40 - 4
3E21	CIRCUIT BOARD, COMBINE DATA CENTER.....	90 - 30	3I1	CONTOUR MASTER - FEEDER HOUSE FRAME, TILT BEAM & CLOSURE PLATES.....	110 - 22
1I21	CIRCUIT BOARDS, CENTRAL ELECTRONICS MODULE.....	40 - 82	3J7	CONTOUR MASTER DRIVESHAFT .....	110 - 54
1I15	CIRCUIT BREAKER RELAYS.....	40 - 76	2H19	CONTOUR MASTER HYDRAULIC HOSES, L.H SIDE (OPTIONAL).....	70 - 32
1I15	CIRCUIT BREAKERS, ENGINE COMPARTMENT.....	40 - 76	3I5	CONTOUR MASTER LOCKOUT ADAPTER KIT (BELT PU & 4R CORN HEADS) .....	110 - 26
5C1	CLEAN GRAIN ELEVATOR DRIVE TIGHTENER AND IDLER.....	130 - 22	2I18	CONTOUR MASTER SOLENOID CONTROL RELIEF VALVE .....	70 - 54
5B24	CLEAN GRAIN ELEVATOR GEARCASE AND SHEAVE.....	130 - 20	2J9	CONTOUR MASTER TILT CYLINDER.....	70 - 70
5B21	CLEAN GRAIN LOADING AUGER .....	130 - 16	2J10	CONTOUR MASTER TILT CYLINDER HOSES AND FITTINGS.....	70 - 71
			1H1	CONTOUR MASTER WIRING HARNESS .....	40 - 38
			1H3	CONTOUR MASTER WIRING HARNESS ADAPTER ....	40 - 40
			3H23	CONTOUR MASTER, FEEDER HOUSE SHELL, WEAR PLATES AND SEALS .....	110 - 20

## ALPHABETICAL INDEX - CONTINUED

GRID	PAGE	GRID	PAGE		
313	CONTOUR MASTER, LOCKOUT ASSEMBLY (OPTIONAL).....	110 - 24	1C19	COVER, TIMING GEAR.....	24 - 16
2B10	CONTROL CABLE, HYDROSTATIC DRIVE.....	50 - 4	5D13	COVERS AND CHANNEL, CROSS AUGER .....	130 - 60
1G3	CONTROL PANEL, ARMREST .....	40 - 14	4E5	COVERS AND FRAME, MODULE .....	120 - 76
1D22	CONTROL UNIT, ELECTRONIC.....	24 - 44	4E3	CRANK OUT SYSTEM, MODULE .....	120 - 74
2D11	CONTROL VALVE .....	50 - 58	1B19	CRANKCASE OIL DRAIN, ENGINE .....	20 - 16
4J1	CONTROL VALVE ADJUSTING SCREW KIT, REEL DRIVE FLOW .....	125 - 25	1C14	CRANKSHAFT .....	24 - 11
2122	CONTROL VALVE MODULE, SIX STACK SOLENOID ASSEMBLY & MOUNTINGS.....	70 - 58	1E9	CRANKSHAFT DAMPERS .....	24 - 56
2D12	CONTROL VALVE SOLENOID .....	50 - 59	1C19	CRANKSHAFT FRONT OIL SEAL .....	24 - 16
4I23	CONTROL VALVE, FLOW, REEL DRIVE .....	125 - 22	1C15	CRANKSHAFT KIT, UNDERSIZE (CONNECTING ROD JOURNAL).....	24 - 12
2C17	CONTROL VALVE, HYDROSTATIC DRIVE, DISPLACEMENT .....	50 - 38	1E9	CRANKSHAFT PULLEY AND DAMPERS .....	24 - 56
4I25	CONTROL VALVE, REEL DRIVE FLOW, SEAL REPAIR KIT .....	125 - 24	5D9	CROSS AUGER BEARING PLATE, L.H. ....	130 - 56
2J20	CONTROL VALVE, SOLENOID, BRACKETS.....	70 - 81	5D13	CROSS AUGER COVERS AND CHANNEL.....	130 - 60
2J19	CONTROL VALVE, SOLENOID, ENGINE GEARCASE PRESSURE REGULATOR .....	70 - 80	5D11	CROSS AUGERS, GRAIN TANK .....	130 - 58
2119	CONTROL VALVE, SOLENOID, FOR AUGER SWING..	70 - 55	3G5	CUP HOLDER .....	90 - 62
4I21	CONTROL, CHECK VALVE, ROD AND KNOB, CHAFF SPREADER .....	125 - 20	4I9	CURTAIN, LOWER, STRAW SPREADER .....	125 - 8
1J19	CONVENIENCE OUTLET .....	40 - 104	4I7	CURTAIN, SPREADER, UPPER.....	125 - 6
1J17	CONVENIENCE OUTLET, KIT .....	40 - 102	5C9	CURTAINS, GRAIN TANK.....	130 - 30
2G23	CONVERSION PARTS, HUDRAULIC, 200 SERIES CUTTING PLATFORM.....	70 - 11	2G23	CUTTING PLATFORM , 200 SERIES CONVERSION PARTS .....	70 - 11
4G17	CONVEYOR AUGER AND CLEANING SHOE PIVOT ARM DRIVE TIGHTENER.....	121 - 52	1C6	CYLINDER BLOCK FITTINGS .....	24 - 2
5E3	CONVEYOR AUGER BELTS, .....	170 - 2	4B7	CYLINDER COVER, THRESHING .....	120 - 1
4G15	CONVEYOR AUGERS, SIEVE AND CHAFFER DRIVE	121 - 50	4B10	CYLINDER DOOR .....	120 - 4
5B9	CONVEYOR CHAIN AND ELEVATOR, CLEAN GRAIN LOWER .....	130 - 4	4G11	CYLINDER DRIVE ADJUSTING BRACKET, DUAL-RANGE .....	121 - 46
5B11	CONVEYOR CHAIN AND ELEVATOR, CLEAN GRAIN LOWER .....	130 - 6	4G1	CYLINDER DRIVE GEARCASE, DUAL-RANGE .....	121 - 36
3110	CONVEYOR IDLER SHAFT, DRUM AND CHAIN, FEEDER.....	110 - 32	4G7	CYLINDER DRIVE INTERMEDIATE SHAFT MOUNTING, DUAL-RANGE .....	121 - 42
1B17	COOLANT HEATER, ENGINE BLOCK.....	20 - 14	4G9	CYLINDER DRIVE INTERMEDIATE SHEAVE, DUAL-RANGE .....	121 - 44
1F9	COOLANT RECOVERY TANK .....	30 - 16	4G5	CYLINDER DRIVE TIGHTENER, DUAL-RANGE .....	121 - 40
1D5	COOLER, ENGINE OIL .....	24 - 27	4F23	CYLINDER DRIVE, SINGLE RANGE .....	121 - 34
2J13	COOLER, OIL, .....	70 - 74	4F21	CYLINDER DRIVE, SLOW SPEED.....	121 - 32
2H1	COOLER, OIL, FEEDER HOUSE .....	70 - 14	1C21	CYLINDER HEAD .....	24 - 18
2H3	COOLER, OIL, FEEDER HOUSE GEARCASE .....	70 - 16	1C21	CYLINDER HEAD BOLTS .....	24 - 18
5E4	COOLING FAN BELTS .....	170 - 3	1C21	CYLINDER HEAD GASKET .....	24 - 18
4C3	CORN AND SMALL GRAIN CONCAVE INDICATOR ....	120 - 22	1E7	CYLINDER HEAD GASKET KIT .....	24 - 54
3D3	CORNER SHEET AND DOOR, FRONT, L.H. ....	80 - 48	2F20	CYLINDER KIT, STEERING .....	60 - 33
3C24	CORNER SHEET, R.H., FRONT.....	80 - 44	1C13	CYLINDER LINERS .....	24 - 10
3D1	CORNER SHEET, REAR, L H .....	80 - 46	2I16	CYLINDER SPEED AND REEL LIFT, SOLENOID CONTROL VALVE.....	70 - 52
4G13	COUNTERSHAFT DRIVE, SECONDARY.....	121 - 48	2I12	CYLINDER SPEED HYDRAULIC LINES AND HOSES ..	70 - 48
5D14	COUNTERSHAFT DRIVE, UNLOADING AUGER .....	130 - 62	2E23	CYLINDER, BRAKE SLAVE .....	60 - 12
4F13	COUNTERSHAFT GEARCASE, PRIMARY .....	121 - 24	2E19	CYLINDER, BRAKE, MASTER .....	60 - 8
4F15	COUNTERSHAFT, PRIMARY, GEARCASE .....	121 - 26	2J5	CYLINDER, DRIVE, GRAIN TANK UNLOADING.....	70 - 66
1B16	COUPLING WITH HUB, ENGINE GEARCASE .....	20 - 12	2H21	CYLINDER, HEADER LIFT, HYDRAULIC .....	70 - 34
4E16	COUPLING, GEARBOX AND SHAFT, MODULE.....	121 - 2	2J3	CYLINDER, HYDRAULIC, UNLOADING AUGER SWING, LINES AND HOSES .....	70 - 64
4C17	COVER, BEATER .....	120 - 36	2F19	CYLINDER, STEERING.....	60 - 32
3G20	COVER, COMPRESSOR A/C R134A.....	90 - 79	4B12	CYLINDER, THRESHING, RASP BAR .....	120 - 6
3B15	COVER, ENGINE.....	80 - 10	4B18	CYLINDER, THRESHING, SPIKE TOOTH.....	120 - 12
2C9	COVER, FRONT, HYDROSTATIC DRIVE PUMP .....	50 - 28	2J9	CYLINDER, TILT - CONTOUR MASTER .....	70 - 70
1E15	COVER, FUEL INJECTION PUMP ACCESS .....	24 - 62	2J10	CYLINDER, TILT, HOSES AND FITTINGS - CONTOUR MASTER.....	70 - 71
2B19	COVER, HOUSING, TRANSMISSION AND DIFFERENTIAL .....	50 - 13	2J7	CYLINDER, UNLOADING AUGER SWING HYDRAULIC.....	70 - 68
2C11	COVER, HYDROSTATIC DRIVE PUMP.....	50 - 30	2E15	CYLINDERS, MASTER BRAKE AND BRAKE PEDALS	60 - 4
2D1	COVER, INNER .....	50 - 48	D		
1D5	COVER, OIL COOLER .....	24 - 27	1C14	DAMPER KEY .....	24 - 11
2D4	COVER, QUILL AND BEARING .....	50 - 51	1E9	DAMPERS, CRANKSHAFT .....	24 - 56
1C24	COVER, ROCKER ARM .....	24 - 21	1F19	DATA CENTER, COMBINE .....	40 - 6
1D12	COVER, THERMOSTAT .....	24 - 34	3E21	DATA CENTER, COMBINE .....	90 - 30
4B7	COVER, THRESHING CYLINDER .....	120 - 1	5G5	DECALS, FRONT.....	170 - 52
			5G7	DECALS, FRONT.....	170 - 54

## ALPHABETICAL INDEX - CONTINUED

GRID		PAGE	GRID		PAGE
5G10	DECALS, FRONT.....	170 - 58	4C11	DRIVE BELT, BEATER, IDLER.....	120 - 30
5G9	DECALS, FRONT WHEEL.....	170 - 56	4J17	DRIVE BRACKET, TAILINGS AND LOWER TROUGH SUPPORT.....	125 - 41
5G5	DECALS, REAR.....	170 - 52	4J23	DRIVE CHAIN TIGHTENER, UPPER TAILINGS .....	125 - 48
5G7	DECALS, REAR.....	170 - 54	2B10	DRIVE CONTROL CABLE, HYDROSTATIC.....	50 - 4
5G10	DECALS, REAR.....	170 - 58	2C17	DRIVE DISPLACEMENT CONTROL VALVE HYDROSTATIC .....	50 - 38
5G9	DECALS, REAR WHEEL.....	170 - 56	1C14	DRIVE GEAR, OIL PUMP .....	24 - 11
5E7	DECALS, SAFETY AND LOCATIONS .....	170 - 6	4E20	DRIVE GEARCASE, MODULE, L.H.....	121 - 6
5E9	DECALS, SAFETY AND LOCATIONS .....	170 - 8	4E18	DRIVE GEARCASE, MODULE, R.H.....	121 - 4
5E11	DECALS, SAFETY AND LOCATIONS .....	170 - 10	4C5	DRIVE IDLER, STRIPPER BEATER.....	120 - 24
5E13	DECALS, SAFETY AND LOCATIONS .....	170 - 12	2B8	DRIVE LEVER, CABLE AND SWITCH HYDROSTATI C.....	50 - 2
5E15	DECALS, SAFETY AND LOCATIONS .....	170 - 14	2C21	DRIVE MOTOR KIT, HYDROSTATIC.....	50 - 42
5E17	DECALS, SAFETY AND LOCATIONS .....	170 - 16	2C19	DRIVE MOTOR, HYDROSTATIC .....	50 - 40
5E19	DECALS, SAFETY AND LOCATIONS - FRENCH.....	170 - 18	2E5	DRIVE MOTOR, HYDROSTATIC .....	50 - 76
5E21	DECALS, SAFETY AND LOCATIONS - FRENCH.....	170 - 20	2C14	DRIVE PISTON ASSEMBLY, HYDROSTATIC.....	50 - 34
5E23	DECALS, SAFETY AND LOCATIONS - FRENCH.....	170 - 22	2C9	DRIVE PUMP, HYDROSTATIC.....	50 - 28
5F1	DECALS, SAFETY AND LOCATIONS - FRENCH.....	170 - 24	2C12	DRIVE PUMP, HYDROSTATIC.....	50 - 32
5F3	DECALS, SAFETY AND LOCATIONS - FRENCH.....	170 - 26	2J1	DRIVE PUMP, REEL/BELT PICKUP.....	70 - 62
5F5	DECALS, SAFETY AND LOCATIONS - ITALIAN .....	170 - 28	2C6	DRIVE SHAFT SHIELDS, FINAL .....	50 - 25
5F9	DECALS, SAFETY AND LOCATIONS - ITALIAN .....	170 - 32	4F11	DRIVE SHAFT, GEARCASE MOUNTING AND PRIMARY COUNTERSHAFT .....	121 - 22
5F11	DECALS, SAFETY AND LOCATIONS - ITALIAN .....	170 - 34	3C19	DRIVE SHIELD, R.H. REAR .....	80 - 38
5F13	DECALS, SAFETY AND LOCATIONS - ITALIAN .....	170 - 36	3C15	DRIVE SHIELDS, AUGER (R-H SIDE).....	80 - 34
5F15	DECALS, SAFETY AND LOCATIONS - ITALIAN .....	170 - 38	3H19	DRIVE SHIELDS, CONTOUR MASTER FEEDER HOUSE.....	110 - 16
5F17	DECALS, SAFETY AND LOCATIONS - ITALIAN .....	170 - 40	3H17	DRIVE SHIELDS, SAFETY STOP, FEEDER HOUSE ....	110 - 14
5F19	DECALS, SAFETY AND LOCATIONS - ITALIAN .....	170 - 42	3C11	DRIVE SIDE SHIELDS, SEPARATOR .....	80 - 30
5F21	DECALS, SAFETY AND LOCATIONS - ITALIAN .....	170 - 44	5C1	DRIVE TIGHTENER AND IDLER, CLEAN GRAIN ELEVATOR .....	130 - 22
5F23	DECALS, SAFETY AND LOCATIONS - ITALIAN .....	170 - 46	4H1	DRIVE TIGHTENER, FEEDER HOUSE .....	121 - 60
5G1	DECALS, SAFETY AND LOCATIONS - ITALIAN .....	170 - 48	3H15	DRIVE TIGHTENER, FIXED SPEED FEEDER HOUSE.....	110 - 12
5G3	DECALS, SAFETY AND LOCATIONS - ITALIAN .....	170 - 50	4J19	DRIVE TIGHTENER, LOWER TAILINGS AUGER .....	125 - 44
5G13	DECALS, SEPARATOR MODULE SAFETY.....	170 - 61	4G17	DRIVE TIGHTENER, PIVOT ARM, CLEANING SHOE AND CONVEYOR AUGER .....	121 - 52
5G12	DECALS, TOP .....	170 - 60	3H13	DRIVE TIGHTENER, VARIABLE SPEED.....	110 - 10
4H7	DECK, SUPPORTS AND FINS, STRAW CHOPPER.....	121 - 66	2B12	DRIVE WHEELS .....	50 - 6
1H14	DEFLECTOR - LESS HARVESTRAK.....	40 - 51	2B13	DRIVE WHEELS, HIGH FLOATATION PLANETARY FINAL DRIVE .....	50 - 7
3B19	DEFLECTOR, ENGINE COMPARTMENT .....	80 - 14	5D14	DRIVE, COUNTERSHAFT, UNLOADING AUGER.....	130 - 62
5D24	DIAL-A-MATIC ELECTRICAL HARNESS .....	160 - 4	5E4	DRIVE, CYLINDER INTERMEDIATE, BELTS .....	170 - 3
5D22	DIAL-A-MATIC HEADER HEIGHT CONTROL HYDRAULIC LINE AND VALVE BLOCK .....	160 - 2	5E4	DRIVE, CYLINDER, BELTS.....	170 - 3
5D23	DIAL-A-MATIC HEADER HEIGHT CONTROL VALVE BLOCK SOLENOID .....	160 - 3	1B12	DRIVE, ENGINE.....	20 - 8
2H22	DIAL-A-MATIC HEADER HEIGHT CONTROL, VALVE BLOCK SOLENOID .....	70 - 35	4G19	DRIVE, FAN, SEPARATOR.....	121 - 54
2B17	DIFFERENTIAL AND TRANSMISSION HOUSING .....	50 - 11	4G23	DRIVE, FAN, SPEED CONTROL SHEAVE LINKAGE....	121 - 58
2C1	DIFFERENTIAL GEARS .....	50 - 20	2C3	DRIVE, FINAL .....	50 - 22
2C1	DIFFERENTIAL SHAFTS.....	50 - 20	2D17	DRIVE, HYDROSTATIC, LOWER OIL LINES (FOUR WHEEL DRIVE) .....	50 - 64
1D15	DIPSTICK, ENGINE OIL .....	24 - 37	2D15	DRIVE, HYDROSTATIC, LOWER OIL LINES (TWO WHEEL DRIVE) .....	50 - 62
4I13	DISC, CHAFF SPREADER (DUAL MOTOR) .....	125 - 12	2G18	DRIVE, REEL, FLOW CONTROL VALVE .....	70 - 6
2C17	DISPLACEMENT CONTROL VALVE, HYDROSTATIC DRIVE .....	50 - 38	1B6	DRIVE, ROTARY SCREEN .....	20 - 2
1F14	DOME LIGHT, CAB .....	40 - 1	4G13	DRIVE, SECONDARY COUNTERSHAFT.....	121 - 48
3E3	DOOR AND GLASS, CAB.....	90 - 12	1B10	DRIVES, ENGINE FAN .....	20 - 6
3D3	DOOR AND SHEET, L.H. FRONT CORNER.....	80 - 48	4E22	DRIVES, ENGINE GEARBOX TO MODULE .....	121 - 8
3E1	DOOR LATCH, CAB .....	90 - 10	4E24	DRIVES, ENGINE GEARBOX TO MODULE .....	121 - 10
4B10	DOOR, CYLINDER.....	120 - 4	4H5	DRIVES, STRAW CHOPPER .....	121 - 64
3B11	DOOR, ENGINE ACCESS, HANDRAILS, RADIATOR.....	80 - 6	4I5	DRIVES, STRAW SPREADER .....	125 - 4
5B7	DOOR, HINGED, CLEAN GRAIN LOWER AUGER.....	130 - 2	3J7	DRIVESHAFT, CONTOUR MASTER .....	110 - 54
4H23	DOOR, LOWER, STRAW CHOPPER.....	121 - 82	2E21	DRUM, BRAKE.....	60 - 10
3C9	DOOR, REAR HOOD.....	80 - 28	3I10	DRUM, CHAIN AND IDLER SHAFT, FEEDER CONVEYOR.....	110 - 32
3C7	DOOR, REAR HOOD ACCESS AND STOP .....	80 - 26	1I1	DUAL LEVEL MONITOR HARNESS, GRAIN TANK .....	40 - 62
1B8	DOOR, ROTARY SCREEN .....	20 - 4	4C13	DUAL SPEED BEATER DRIVE CONVERSION, 700/400 RPM.....	120 - 32
4B8	DOOR, SEAL AND STONE TRAP, SEPARATOR/ FEEDER HOUSE.....	120 - 2			
4I11	DOOR, STRAW SPREADER.....	125 - 10			
4H21	DOOR, UPPER REAR, STRAW CHOPPER .....	121 - 80			
1D12	DRAIN VALVE, CYLINDER HEAD .....	24 - 34			
1D8	DRAIN VALVE, OIL PAN.....	24 - 30			
1B19	DRAIN, ENGINE CRANKCASE OIL .....	20 - 16			
4C9	DRIVE BELT AND BEATER SHAFT.....	120 - 28			

## ALPHABETICAL INDEX - CONTINUED

GRID		PAGE	GRID		PAGE
2B14	DUAL WHEELS, WIDE-SPACED (PLANETARY FINAL DRIVE) .....	50 - 8	4F5	ENGINE GEARCASE- SEPARATOR DRIVE WET- CLUTCH AND PUMP DRIVE SHAFT .....	121 - 16
4G11	DUAL-RANGE CYLINDER DRIVE ADJUSTING BRACKET.....	121 - 46	4F7	ENGINE GEARCASE, SEPARATOR AND PUMP DRIVE .....	121 - 18
4G1	DUAL-RANGE CYLINDER DRIVE GEARCASE .....	121 - 36	4F9	ENGINE GEARCASE, SEPARATOR AND PUMP DRIVE .....	121 - 20
4G7	DUAL-RANGE CYLINDER DRIVE INTERMEDIATE SHAFT MOUNTING.....	121 - 42	4F3	ENGINE GEARCASE, STRAW CHOPPER, UNLOAD- ING DRIVE AND SEPARATOR DRIVE GEAR .....	121 - 14
4G9	DUAL-RANGE CYLINDER DRIVE INTERMEDIATE SHEAVE.....	121 - 44	4F1	ENGINE GEARCASE, UNLOADING AND SEPARATOR DRIVE GEAR.....	121 - 12
4G5	DUAL-RANGE CYLINDER DRIVE TIGHTENER .....	121 - 40	1B14	ENGINE INTERCOOLER.....	20 - 10
4G3	DUAL-RANGE LOCKOUT ARM .....	121 - 38	1B13	ENGINE MOUNTS AND REAR SUPPORT .....	20 - 9
3E20	DUCTS, HEATER AND AIR CONDITIONING .....	90 - 29	1C5	ENGINE OIL (TORQ-GARD PLUS-50).....	24 - 1
3J1	DUST FAN BELT, LH FEEDER HOUSE .....	110 - 48	1D5	ENGINE OIL COOLER .....	24 - 27
3I24	DUST FAN, LH SIDE FEEDER HOUSE.....	110 - 46	1D15	ENGINE OIL DIPSTICK.....	24 - 37
2H1	DUST SUPPRESSION, LUBE OIL PUMP .....	70 - 14	1D15	ENGINE OIL DIPSTICK TUBE .....	24 - 37
	<b>E</b>		1D6	ENGINE OIL FILTER .....	24 - 28
1D22	E.C.U. ....	24 - 44	1D2	ENGINE OIL PUMP .....	24 - 24
1I17	ECU MOUNTING SUPPORT (SN -XXXXXX) .....	40 - 78	1D1	ENGINE OIL PUMP INTAKE.....	24 - 23
1E21	ELECTRIC FUEL PUMP, WATER SEPARATOR AND FUEL FLOAT .....	30 - 4	1C11	ENGINE OVERHAUL KIT .....	24 - 8
1J1	ELECTRICAL CONNECTOR SERVICE KIT.....	40 - 86	1H19	ENGINE PLUGGED AIR FILTER WARNING SWITCH ..	40 - 56
1J3	ELECTRICAL CONNECTOR SERVICE KIT.....	40 - 88	3B15	ENGINE RAILS .....	80 - 10
5D24	ELECTRICAL HARNESS, DIAL-A-MATIC.....	160 - 4	1E7	ENGINE REBUILD GASKET KIT .....	24 - 54
1J8	ELECTRICAL SERVICE OUTLET .....	40 - 93	1C8	ENGINE SERVICE PARTS, KEY .....	24 - 4
1E5	ELECTRICAL TERMINALS AND CONNECTORS, WEATHERPACK .....	24 - 52	1E14	ENGINE SPEED SENSOR .....	24 - 61
4F17	ELECTROMAGNETIC HEADER CLUTCH .....	121 - 28	1F19	ENGINE TEMPERATURE GAUGE .....	40 - 6
1D22	ELECTRONIC CONTROL UNIT .....	24 - 44	3E21	ENGINE TEMPERATURE GAUGE .....	90 - 30
1I19	ELECTRONIC CONTROL UNIT MOUNTING SUPPORT	40 - 80	1F3	ETHER STARTING AID.....	30 - 10
1D22	ELECTRONIC FUEL INJECTION PUMP .....	24 - 44	1D19	ETHER STARTING FITTINGS .....	24 - 41
1I21	ELECTRONICS MODULE AND CIRCUIT BOARD, CENTRAL.....	40 - 82	1D18	EXHAUST MANIFOLD GASKETS.....	24 - 40
4D13	ELEMENT, CHAFFER .....	120 - 58	1D18	EXHAUST MANIFOLD HEAT SHIELD .....	24 - 40
4D15	ELEMENT, CHAFFER EXTENSION .....	120 - 60	1D18	EXHAUST MANIFOLDS.....	24 - 40
4D19	ELEMENT, SIEVE .....	120 - 64	1F5	EXHAUST PIPES AND MUFFLER .....	30 - 12
5B9	ELEVATOR AND CONVEYOR CHAIN, CLEAN GRAIN LOWER .....	130 - 4	1C21	EXHAUST VALVE SHIELD .....	24 - 18
5B11	ELEVATOR AND CONVEYOR CHAIN, CLEAN GRAIN LOWER .....	130 - 6	1C21	EXHAUST VALVES .....	24 - 18
5B15	ELEVATOR SHAFT, SPROCKET AND SHEAVE, UPPER CLEAN GRAIN.....	130 - 10	4D15	EXTENSION ELEMENT, CHAFFER .....	120 - 60
5C3	ELEVATOR SHIELDS, UPPER CLEAN GRAIN.....	130 - 24	5C11	EXTENSIONS, GRAIN TANK .....	130 - 32
5E4	ELEVATOR, CLEAN GRAIN BELTS.....	170 - 3		<b>F</b>	
4J14	ELEVATOR, TAILINGS, HOUSING.....	125 - 38	1I4	FAN DRIVE ADJUSTING MOTOR, SEPARATOR .....	40 - 65
5B13	ELEVATOR, UPPER CLEAN GRAIN .....	130 - 8	3C17	FAN DRIVE AND MUD SHIELDS (L.H. SIDE).....	80 - 36
3B11	ENGINE ACCESS DOOR, HANDRAILS, AND RADIATOR DOOR.....	80 - 6	4G21	FAN DRIVE SPEED CONTROL LINKAGE.....	121 - 56
3B21	ENGINE ACCESS PLATFORM AND STEP .....	80 - 16	4G23	FAN DRIVE SPEED CONTROL SHEAVE LINKAGE.....	121 - 58
1B17	ENGINE BLOCK COOLANT HEATER .....	20 - 14	1E2	FAN DRIVE, FIXED .....	24 - 49
1I15	ENGINE CIRCUIT BREAKERS.....	40 - 76	4G19	FAN DRIVE, SEPARATOR .....	121 - 54
3B15	ENGINE COMPARTMENT.....	80 - 10	1E2	FAN PULLEY HUB.....	24 - 49
3B17	ENGINE COMPARTMENT.....	80 - 12	1E13	FAN PULLEY, AIR CONDITIONER COMPRESSOR .....	24 - 60
3B19	ENGINE COMPARTMENT.....	80 - 14	5E5	FAN, CLEANING, BELTS .....	170 - 4
1B19	ENGINE CRANKCASE OIL DRAIN.....	20 - 16	3I24	FAN, DUST, LH SIDE FEEDER HOUSE .....	110 - 46
1B12	ENGINE DRIVE .....	20 - 8	1B10	FAN, ENGINE AND DRIVES.....	20 - 6
1B10	ENGINE FAN AND DRIVES .....	20 - 6	3G12	FAN, PRESSURIZER AND AIR CONDITIONING/ HEATER.....	90 - 70
4E22	ENGINE GEARBOX TO MODULE DRIVES.....	121 - 8	4C24	FANS AND SHROUDS, CLEANING .....	120 - 44
4E24	ENGINE GEARBOX TO MODULE DRIVES.....	121 - 10	4D1	FANS AND SHROUDS, CLEANING .....	120 - 46
1B16	ENGINE GEARCASE COUPLING WITH HUB.....	20 - 12	3I4	FEED PLATE LATCH HANDLE .....	110 - 36
2J15	ENGINE GEARCASE OIL FILTER ASSEMBLY.....	70 - 76	5E3	FEEDER CONVEYOR BELTS.....	170 - 2
2J17	ENGINE GEARCASE PRESSURE REGULATOR .....	70 - 78	3I12	FEEDER CONVEYOR DRIVE CHAIN, TIGHTENER AND GUIDES.....	110 - 34
2J19	ENGINE GEARCASE PRESSURE REGULATOR, SOLENOID CONTROL VALVE.....	70 - 80	3I10	FEEDER CONVEYOR IDLER SHAFT, DRUM AND CHAIN .....	110 - 32
			1J15	FEEDER HOUSE BACKSHAFT SPEED SENSOR .....	40 - 100
			5E5	FEEDER HOUSE BELTS .....	170 - 4
			3H19	FEEDER HOUSE DRIVE SHIELDS - CONTOUR MASTER .....	110 - 16



## ALPHABETICAL INDEX - CONTINUED

GRID		PAGE	GRID		PAGE
3H17	FEEDER HOUSE DRIVE SHIELDS AND SAFETY STOP .....	110-14	2G3	FIXED REAR AXLE, 4-WHEEL DRIVE, STEERING TIE RODS - GRAIN.....	60-42
4H1	FEEDER HOUSE DRIVE TIGHTENER.....	121-60	3H15	FIXED SPEED FEEDER HOUSE DRIVE TIGHTENER ..	110-12
3H15	FEEDER HOUSE DRIVE TIGHTENER (FIXED SPEED) .....	110-12	2J21	FLAT O-RING KIT, HYDRAULIC.....	70-82
3J1	FEEDER HOUSE DUST FAN BELT, LH .....	110-48	1E21	FLOAT, FUEL.....	30-4
3I24	FEEDER HOUSE DUST FAN, LH SIDE.....	110-46	3D17	FLOOR MAT AND PANELS, CAB .....	90-2
3I8	FEEDER HOUSE FLOOR .....	110-30	3I8	FLOOR, FEEDER HOUSE .....	110-30
3H21	FEEDER HOUSE FRAME .....	110-18	2E1	FLOW CONTROL VALVE TO CAM LOBE MOTORS, LINES AND HOSES .....	50-72
3I1	FEEDER HOUSE FRAME, TILT BEAM & CLOSURE PLATES, CONTOUR MASTER.....	110-22	2G18	FLOW CONTROL VALVE, REEL DRIVE .....	70-6
3J5	FEEDER HOUSE FRONT DRIVE SHAFT, SHEAVE AND MOUNTINGS (FIXED SPEED WITH.....	110-52	4I23	FLOW CONTROL VALVE, REEL DRIVE .....	125-22
2H3	FEEDER HOUSE GEARCASE OIL COOLER .....	70-16	1C18	FLYWHEEL.....	24-15
2H5	FEEDER HOUSE OIL COOLER GEARBOX FITTINGS AND HOSES .....	70-18	1C18	FLYWHEEL HUB .....	24-15
2G24	FEEDER HOUSE OIL COOLER LUBE OIL PUMP .....	70-12	3D19	FOAM, SEALS, SOUND DEADENING, CAB .....	90-4
2H1	FEEDER HOUSE OIL COOLER, LUBE OIL PUMP.....	70-14	1C20	FOLLOWER, CAMSHAFT .....	24-17
3I20	FEEDER HOUSE RETURN FLOOR.....	110-42	1C23	FOLLOWER, CAMSHAFT .....	24-20
3F1	FEEDER HOUSE REVERSER FOOT CONTROL .....	90-34	3H9	FOOT CONTROL, FEEDER HOUSE REVERSER.....	110-6
3H9	FEEDER HOUSE REVERSER FOOT CONTROL .....	110-6	3F1	FOOT CONTROL, REVERSER, FEEDER HOUSE .....	90-34
3H23	FEEDER HOUSE SHELL - CONTOUR MASTER .....	110-20	3F9	FORE-AND-AFT, SEAT ADJUST .....	90-42
3I16	FEEDER HOUSE SLIP CLUTCH .....	110-38	2B17	FORKS, SHIFTER .....	50-11
3I6	FEEDER HOUSE UPPER SHAFT .....	110-28	2E4	FOUR WHEEL DRIVE CASE DRAIN HYDRAULIC LINES .....	50-75
2G22	FEEDER HOUSE VARIABLE DRIVE HYDRAULIC HOSE .....	70-10	2D23	FOUR WHEEL DRIVE HYDRAULIC LINES AND HOS ES, L.H. ....	50-70
3H23	FEEDER HOUSE WEAR PLATES - CONTOUR MASTER .....	110-20	2E1	FOUR WHEEL DRIVE LINES AND HOSES .....	50-72
3I18	FEEDER HOUSE, UPPER COUNTERSHAFT VARIABLE DRIVE .....	110-40	4E5	FRAME AND COVERS, MODULE .....	120-76
1F17	FIELD LIGHT SWITCH, AUX, OPTIONAL .....	40-4	3E5	FRAME AND SUPPORT, CAB .....	90-14
1F23	FIELD LIGHTING, AUXILIARY .....	40-10	4D11	FRAME ARMS, PRECLEANER CHAFFER .....	120-56
1J23	FIELD LIGHTS .....	40-108	4D17	FRAME, CHAFFER .....	120-62
4E9	FILLER PLATE, MODULE GRATE ASSEMBLY AND FINGER BAR .....	120-80	3H21	FRAME, FEEDER HOUSE .....	110-18
2H23	FILTER ASSEMBLY, MAIN, HYDRAULIC .....	70-36	3I1	FRAME, FEEDER HOUSE, CONTOUR MASTER .....	110-22
1F1	FILTER, AIR AND INTAKE TUBES .....	30-8	3B9	FRAME, SEPARATOR.....	80-4
1D6	FILTER, ENGINE OIL .....	24-28	4D21	FRAME, SIEVE .....	120-66
1E3	FILTER, FUEL .....	24-50	4I9	FRAME, STRAW SPREADER.....	125-8
2J15	FILTER, OIL, ENGINE GEARCASE, ASSEMBLY .....	70-76	1F22	FRONT AND REAR TURN AND TAIL LIGHTS .....	40-9
1C19	FILTER, WATER PUMP (WEEP HOLE).....	24-16	2B15	FRONT AXLE.....	50-9
3G10	FILTERS, AIR CONDITIONING AND HEATER HOUSING.....	90-68	3D3	FRONT CORNER SHEET AND DOOR, L.H.....	80-48
2C3	FINAL DRIVE .....	50-22	3C24	FRONT CORNER SHEET, R.H. ....	80-44
2C5	FINAL DRIVE AXLE, GEAR AND BEARINGS .....	50-24	1C19	FRONT OIL SEAL .....	24-16
2C4	FINAL DRIVE HOUSING AND BEARING CAP .....	50-23	3H11	FRONT SHAFT WITH REVERSER (VARIABLE) 9400, 9500 COMBINES .....	110-8
2C7	FINAL DRIVE PINION, SHAFTS AND BEARINGS .....	50-26	3D7	FRONT SHIELD ASSEMBLY, LEFT SIDE .....	80-52
2C6	FINAL DRIVE SHAFT SHIELDS .....	50-25	3D9	FRONT SHIELD ASSEMBLY, RIGHT SIDE.....	80-54
4H13	FINE CUT ROTOR STRAW CHOPPER (PADDLED NARROW (670401- ) .....	121-72	2F3	FRONT STEERING HOSES AND LINES.....	60-16
4H11	FINE CUT ROTOR STRAW CHOPPER (STRAIGHT NARROW (670401- ) .....	121-70	3H5	FRONT VARIABLE DRIVE SHEAVE AND MOUNTINGS .....	110-2
4E9	FINGER BAR, FILLER PLATE AND MODULE GRATE ASSEMBLY .....	120-80	1D12	FRONT WATER MANIFOLD.....	24-34
4H7	FINS, SUPPORTS AND DECK, STRAW CHOPPER.....	121-66	5G9	FRONT WHEEL DECALS .....	170-56
2H5	FITTINGS AND HOSES, OIL COOLER, GEARBOX, FEEDER HOUSE.....	70-18	1E3	FUEL CHECK VALVE .....	24-50
4J2	FITTINGS AND LINES, CHAFF SPREADER .....	125-26	1E3	FUEL FILTER.....	24-50
1C6	FITTINGS, CYLINDER BLOCK .....	24-2	1E3	FUEL FILTER BASE .....	24-50
1D19	FITTINGS, ETHER STARTING .....	24-41	1E3	FUEL FILTER LINES .....	24-50
1E19	FITTINGS, FUEL TANK.....	30-2	1E21	FUEL FLOAT .....	30-4
1E23	FITTINGS, TANK FUEL LINES.....	30-6	1F19	FUEL GAUGE .....	40-6
2J10	FITTINGS, TILT CYLINDER - CONTOUR MASTER .....	70-71	3E21	FUEL GAUGE .....	90-30
1E2	FIXED FAN DRIVE .....	24-49	1E1	FUEL INJECTION NOZZLE.....	24-48
2F22	FIXED REAR AXLE (GRAIN) .....	60-35	1D20	FUEL INJECTION NOZZLES .....	24-42
2G7	FIXED REAR AXLE STEERING TIE RODS GRAIN .....	60-46	1D22	FUEL INJECTION PUMP.....	24-44
			1E15	FUEL INJECTION PUMP ACCESS COVER .....	24-62
			1D24	FUEL INJECTION PUMP HOUSING CONNECTORS .....	24-46
			1D22	FUEL LEAK-OFF LINES .....	24-44
			1D20	FUEL LINES.....	24-42
			1D22	FUEL SHUT-OFF SOLENOID (FIP) .....	24-44
			1E19	FUEL TANK, SUPPORTS, AND FITTINGS .....	30-2
			1D25	FUEL TRANSFER PUMP (ROBERT BOSCH).....	24-47

## ALPHABETICAL INDEX - CONTINUED

GRID		PAGE	GRID		PAGE
	<b>G</b>				
1C24	GASKET ADHESIVE, ROCKER ARM COVER .....	24 - 21	5D17	GRAIN TANK SAMPLING TROUGH.....	130 - 66
1E7	GASKET KIT, CYLINDER HEAD .....	24 - 54	5C5	GRAIN TANK TOP.....	130 - 26
1E7	GASKET KIT, ENGINE REBUILD .....	24 - 54	2J5	GRAIN TANK UNLOADING DRIVE CYLINDER.....	70 - 66
1E7	GASKET KIT, SHORT BLOCK .....	24 - 54	2J5	GRAIN TANK UNLOADING DRIVE CYLINDER MOUNTING .....	70 - 66
1C21	GASKET, CYLINDER HEAD .....	24 - 18	1H23	GRAIN TANK WIRING HARNESS, LIGHT, LIMIT SWITCH AND LEVEL MONITOR .....	40 - 60
1D14	GASKET, INTAKE MANIFOLD .....	24 - 36	4B14	GRATE AND RASP BAR CONCAVE .....	120 - 8
1D6	GASKET, OIL FILTER HOUSING .....	24 - 28	5D16	GUIDE, DRIVE BELT, UNLOADING AUGER.....	130 - 64
1D8	GASKET, OIL PAN .....	24 - 30	3I12	GUIDES, TIGHTENER AND FEEDER CONVEYOR DRIVE CHAIN .....	110 - 34
1D2	GASKET, OIL PUMP .....	24 - 24			
1D1	GASKET, OIL PUMP INTAKE.....	24 - 23		<b>H</b>	
1C17	GASKET, REAR OIL SEAL.....	24 - 14	4C19	HANDLE, LATCHES, SHOE GRAIN SUPPLY AUGER CLEANOUT DOOR .....	120 - 38
1C24	GASKET, ROCKER ARM COVER .....	24 - 21	4I15	HANDLES AND SHIELDS, CHAFF SPREADER (DUAL MOTOR).....	125 - 14
1D12	GASKET, THERMOSTAT .....	24 - 34	3E9	HANDRAIL AND LADDER, OPERATOR'S PLATFORM	90 - 18
1C19	GASKET, TIMING GEAR COVER.....	24 - 16	3B11	HANDRAILS, RADIATOR DOOR, ENGINE ACCESS DOOR .....	80 - 6
1D16	GASKET, TURBOCHARGER .....	24 - 38	3H1	HARDWARE KIT, CAB .....	90 - 84
1D12	GASKET, WATER MANIFOLD .....	24 - 34	3G21	HARDWARE KIT, COMPRESSOR R134A .....	90 - 80
1D10	GASKET, WATER PUMP .....	24 - 32	2E7	HARDWARE, HYDRAULIC PUMP CONNECTING .....	50 - 78
1D18	GASKETS, EXHAUST MANIFOLD .....	24 - 40	1J9	HARNESS CONNECTORS, LOWER, 6076 ENGINE ....	40 - 94
2G14	GAUGE, ACCUMULATOR PRESSURE .....	70 - 2	1J11	HARNESS CONNECTORS, UPPER, 6076 ENGINE .....	40 - 96
1F19	GAUGE, ENGINE TEMPERATURE .....	40 - 6	1H1	HARNESS WIRING, MAIN, L.H. CENTER .....	40 - 38
3E21	GAUGE, ENGINE TEMPERATURE .....	90 - 30	1G1	HARNESS, ARMREST WIRING .....	40 - 12
3H7	GEAR BOX, REVERSER.....	110 - 4	1F15	HARNESS, CAB WIRING .....	40 - 2
5C15	GEAR CASE, VERTICAL AUGER LOWER .....	130 - 36	1I1	HARNESS, GRAIN TANK DUAL LEVEL MONITOR .....	40 - 62
1C20	GEAR, CAMSHAFT .....	24 - 17	1H17	HARNESS, LOWER, ENGINE, 6076 .....	40 - 54
2C5	GEAR, FINAL DRIVE.....	50 - 24	1E11	HARNESS, STARTER, WIRING .....	24 - 58
1D22	GEAR, INJECTION PUMP.....	24 - 44	1H15	HARNESS, UPPER, ENGINE, 6076 .....	40 - 52
1C14	GEAR, OIL PUMP DRIVE .....	24 - 11	1G7	HARNESS, WIRING, A/C, HEATER AND AIRSEAT .....	40 - 18
1D2	GEAR, OIL PUMP DRIVE .....	24 - 24	1H3	HARNESS, WIRING, MAIN, L.H. CENTER .....	40 - 40
1C18	GEAR, STARTER.....	24 - 15	1H7	HARNESS, WIRING, R.H. MAIN.....	40 - 44
2H5	GEARBOX FITTINGS AND HOSES, OIL COOLER, FEEDER HOUSE.....	70 - 18	1G5	HARNESS, WIRING, STEERING COLUMN.....	40 - 16
4E22	GEARBOX, ENGINE TO MODULE DRIVES .....	121 - 8	1F19	HARVESTRAK .....	40 - 6
4E24	GEARBOX, ENGINE TO MODULE DRIVES .....	121 - 10	3E21	HARVESTRAK .....	90 - 30
4E16	GEARBOX, SHAFT AND COUPLING, MODULE.....	121 - 2	1H11	HARVESTRAK MONITOR SYSTEM.....	40 - 48
4C15	GEARCASE AND SHEAVE, BEATER .....	120 - 34	1H11	HARVESTRAK WIRING HARNESS .....	40 - 48
5B24	GEARCASE AND SHEAVE, CLEAN GRAIN ELEVATOR .....	130 - 20	1C21	HEAD BOLT KIT .....	24 - 18
1B16	GEARCASE COUPLING, ENGINE .....	20 - 12	1C21	HEAD, CYLINDER .....	24 - 18
4F11	GEARCASE MOUNTING, PRIMARY COUNTERSHAFT AND DRIVE SHAFT .....	121 - 22	5E5	HEADER BELTS .....	170 - 4
4G1	GEARCASE, DUAL-RANGE CYLINDER DRIVE .....	121 - 36	4F17	HEADER ELECTROMAGNETIC CLUTCH .....	121 - 28
4F5	GEARCASE, ENGINE .....	121 - 16	2H22	HEADER HEIGHT CONTROL VALVE .....	70 - 35
4F9	GEARCASE, ENGINE .....	121 - 20	5D23	HEADER HEIGHT CONTROL VALVE .....	160 - 3
5C25	GEARCASE, HORIZONTAL UNLOADING AUGER DRIVE .....	130 - 46	5D22	HEADER HEIGHT CONTROL, DIAL-A-MATIC HYDRAULIC LINE AND VALVE BLOCK .....	160 - 2
2E7	GEARCASE, HYDROSTATIC DRIVE PUMP,MAIN HYDRAULIC PUMP CONNECTING HARDWARE.....	50 - 78	5D24	HEADER HEIGHT CONTROL, ELECTRIC HARNESS, DIAL-A-MATIC .....	160 - 4
4E20	GEARCASE, MODULE DRIVE, L.H.....	121 - 6	2H21	HEADER LIFT CYLINDER, HYDRAULIC .....	70 - 34
4E18	GEARCASE, MODULE DRIVE, R.H. ....	121 - 4	2H17	HEADER LIFT HYDRAULIC LINES AND HOSES .....	70 - 30
4F13	GEARCASE, PRIMARY COUNTERSHAFT .....	121 - 24	2I14	HEADER LIFT MODULE, SOLENOID CONTROL VALVE .....	70 - 50
4F15	GEARCASE, PRIMARY COUNTERSHAFT .....	121 - 26	1A9	HEADERS.....	10 - 8
2C1	GEARS, DIFFERENTIAL .....	50 - 20	1D18	HEAT SHIELD, EXHAUST MANIFOLD.....	24 - 40
2B22	GEARS, TRANSMISSION INPUT SHAFT .....	50 - 16	1G9	HEATER AND AIR CONDITIONER SWITCH.....	40 - 20
2B24	GEARS, TRANSMISSIONPINION SHAFT .....	50 - 18	3E20	HEATER AND AIR CONDITIONING DUCTS .....	90 - 29
2B20	GEARSHIFT LEVER AND LINKAGE .....	50 - 14	3G10	HEATER HOUSING AND AIR CONDITIONING FILTERS.....	90 - 68
3E23	GEARSHIFT LEVER AND LINKAGE .....	90 - 32	3G23	HEATER SYSTEM.....	90 - 82
3E3	GLASS AND DOOR, CAB.....	90 - 12	1G7	HEATER WIRING HARNESS .....	40 - 18
3F23	GLOVE BOX, ARMREST (R.H.) .....	90 - 56	1B17	HEATER, COOLANT, ENGINE BLOCK .....	20 - 14
4D9	GRAIN LEAK KIT.....	120 - 54	3F11	HEIGHT ADJUSTER, CAB SEAT .....	90 - 44
5C9	GRAIN TANK AND CURTAINS.....	130 - 30			
5C7	GRAIN TANK BASE.....	130 - 28			
5D11	GRAIN TANK CROSS AUGERS.....	130 - 58			
1I1	GRAIN TANK DUAL LEVEL MONITOR HARNESS.....	40 - 62			
5C11	GRAIN TANK EXTENSIONS.....	130 - 32			
5C13	GRAIN TANK EXTENSIONS SUPPORT AND ANGLES	130 - 34			

## ALPHABETICAL INDEX - CONTINUED

GRID		PAGE	GRID		PAGE
2B13	HIGH FLOATATION DRIVE WHEELS PLANETARY FINAL DRIVE .....	50 - 7	4H17	HOUSING AND KNIFEBANK, STRAW CHOPPER .....	121 - 76
1113	HOLDDOWN, BATTERY .....	40 - 74	4H19	HOUSING AND KNIFEBANK, STRAW CHOPPER .....	121 - 78
3G5	HOLDER, CUP .....	90 - 62	4J21	HOUSING AND PADDLE ASSEMBLY, UPPER TAILINGS AUGER .....	125 - 46
3C3	HOOD, REAR .....	80 - 22	4C20	HOUSING AND SHOE GRAIN SUPPLY AUGERS .....	120 - 40
3C7	HOOD, REAR, ACCESS DOOR AND STOP .....	80 - 26	4C22	HOUSING AND SHOE GRAIN SUPPLY AUGERS .....	120 - 42
5D7	HORIZONTAL UNLOADING AUGER (17- AND 20-FT.) .....	130 - 54	1D24	HOUSING CONNECTORS, FUEL INJECTION PUMP ..	24 - 46
5C25	HORIZONTAL UNLOADING AUGER DRIVE GEARCASE .....	130 - 46	2B19	HOUSING COVER, TRANSMISSION AND DIFFERENTIAL .....	50 - 13
5D1	HORIZONTAL UNLOADING AUGER HOUSING (14- AND 17-FT.) .....	130 - 48	2C4	HOUSING, FINAL DRIVE .....	50 - 23
5D3	HORIZONTAL UNLOADING AUGER HOUSING (17- AND 20-FT.) .....	130 - 50	5D1	HOUSING, HORIZONTAL UNLOADING AUGER (14- AND 17-FT.) .....	130 - 48
5D5	HORIZONTAL UNLOADING AUGER HOUSING (17- AND 20-FT.) .....	130 - 52	5D3	HOUSING, HORIZONTAL UNLOADING AUGER (17- AND 20-FT.) .....	130 - 50
5C23	HORIZONTAL UNLOADING AUGER HUB SUPPORT AND SWITCH .....	130 - 44	5D5	HOUSING, HORIZONTAL UNLOADING AUGER (17- AND 20-FT.) .....	130 - 52
5C19	HORIZONTAL UNLOADING AUGER SWIVEL .....	130 - 40	2C12	HOUSING, HYDROSTATIC DRIVE PUMP .....	50 - 32
3G19	HOSE, A/C COMPRESSOR .....	90 - 77	1D6	HOUSING, OIL FILTER .....	24 - 28
2J23	HOSE, CHARGE PRESSURE .....	70 - 84	1C17	HOUSING, REAR OIL SEAL .....	24 - 14
2G22	HOSE, HYDRAULIC, VARIABLE DRIVE, FEEDER HOUSE .....	70 - 10	2F24	HOUSING, SPINDLE, REAR AXLE .....	60 - 38
4J6	HOSES AND LINES, CHAFF SPREADER (DUAL MOTOR) .....	125 - 30	2F25	HOUSING, SPINDLE, REAR AXLE GRAIN .....	60 - 39
2E1	HOSES AND LINES, FOUR WHEEL DRIVE .....	50 - 72	4J14	HOUSING, TAILINGS ELEVATOR .....	125 - 38
2D23	HOSES AND LINES, FOUR WHEEL DRIVE HYDRAU LIC, L.H. ....	50 - 70	1D12	HOUSING, THERMOSTAT, FRONT .....	24 - 34
2H17	HOSES AND LINES, HEADER LIFT .....	70 - 30	5C23	HUB SUPPORT AND SWITCH, HORIZONTAL UNLOADING AUGER .....	130 - 44
2112	HOSES AND LINES, HYDRAULIC, CYLINDER SPEED .....	70 - 48	1B10	HUB, ENGINE FAN .....	20 - 6
2H13	HOSES AND LINES, HYDRAULIC, REEL FORE- AND-AFT, FRONT .....	70 - 26	1E2	HUB, FAN PULLEY .....	24 - 49
2H9	HOSES AND LINES, HYDRAULIC, REEL PUMP .....	70 - 22	1C18	HUB, FLYWHEEL .....	24 - 15
2D21	HOSES AND LINES, OIL COOLER, HYDROSTATIC ....	50 - 68	2H23	HYDRAULIC FILTER ASSEMBLY, MAIN .....	70 - 36
2J11	HOSES AND LINES, OIL COOLER, WET CLUTCH .....	70 - 72	2J21	HYDRAULIC FLAT O-RING KIT .....	70 - 82
2D13	HOSES AND LINES, OIL, HYDROSTATIC DRIVE, LOWER (TWO WHEEL DRIVE) .....	50 - 60	2G22	HYDRAULIC HOSE, VARIABLE DRIVE, FEEDER HOUSE .....	70 - 10
2H7	HOSES AND LINES, REEL DRIVE, HYD., FRONT .....	70 - 20	2H19	HYDRAULIC HOSES, CONTOUR MASTER (L.H.) (OPTIONAL) .....	70 - 32
2G16	HOSES AND LINES, REEL DRIVE, HYDRAULIC, L.H. SIDE .....	70 - 4	2112	HYDRAULIC LINES AND HOSES, CYLINDER SPEED .....	70 - 48
2H11	HOSES AND LINES, REEL LIFT .....	70 - 24	2H17	HYDRAULIC LINES AND HOSES, HEADER LIFT .....	70 - 30
2F3	HOSES AND LINES, STEERING, FRONT .....	60 - 16	2D23	HYDRAULIC LINES AND HOSES, L.H., FOUR WH EEL DRIVE .....	50 - 70
2F11	HOSES AND LINES, STEERING, REAR .....	60 - 24	2H13	HYDRAULIC LINES AND HOSES, REEL FORE-AND-AFT, FRONT .....	70 - 26
2J3	HOSES AND LINES, UNLOADING AUGER SWING HYDRAULIC CYLINDER .....	70 - 64	2G16	HYDRAULIC LINES AND HOSES, REEL DRIVE L.H. SIDE .....	70 - 4
218	HOSES AND LINES, UPPER RETURN, HYDRAULIC RESERVOIR .....	70 - 44	2H7	HYDRAULIC LINES AND HOSES, REEL DRIVE, FRONT .....	70 - 20
2J5	HOSES, GRAIN TANK UNLOADING DRIVE CYLINDER .....	70 - 66	2H9	HYDRAULIC LINES AND HOSES, REEL PUMP .....	70 - 22
2H19	HOSES, HYDRAULIC, CONTOUR MASTER (L.H.) (OPTIONAL) .....	70 - 32	2E4	HYDRAULIC LINES, FOUR WHEEL DRIVE CASE DRAIN .....	50 - 75
4K7	HOSES, LUBE, L. H. ....	125 - 58	2H15	HYDRAULIC LINES, REEL FORE-AND-AFT, L.H. SIDE .....	70 - 28
4K5	HOSES, LUBE, R. H. ....	125 - 56	2J7	HYDRAULIC MOUNTING, UNLOADING AUGER SWING .....	70 - 68
2D17	HOSES, OIL, HYDROSTATIC DRIVE, LOWER (FOUR WHEEL DRIVE) .....	50 - 64	2110	HYDRAULIC PRESSURE LINES AND HOSES .....	70 - 46
2D15	HOSES, OIL, HYDROSTATIC DRIVE, LOWER (TWO WHEEL DRIVE) .....	50 - 62	2E7	HYDRAULIC PUMP CONNECTING HARDWARE, HYDROSTATIC DRIVE PUMP .....	50 - 78
2110	HOSES, PRESSURE, HYDRAULIC .....	70 - 46	2I24	HYDRAULIC PUMP, MAIN .....	70 - 60
1F7	HOSES, RADIATOR .....	30 - 14	2I6	HYDRAULIC RETURN LINES .....	70 - 42
2F5	HOSES, STEERING, UPPER .....	60 - 18	2F5	HYDRAULIC STEERING HOSES, UPPER AND ATTENUATOR .....	60 - 18
2J10	HOSES, TILT CYLINDER - CONTOUR MASTER .....	70 - 71	218	HYDRAULIC UPPER RETURN LINES AND HOSES, RESERVOIR .....	70 - 44
2D19	HOSES, UPPER, HYDROSTATIC DRIVE (FOUR WHEEL DRIVE) .....	50 - 66	211	HYDRAULIC/HYDROSTATIC OIL RESERVOIR AND MOUNTINGS .....	70 - 37
4J4	HOSES, VALVE, PUMP AND LINES, CHAFF SPREADER .....	125 - 28	2C15	HYDROSTATIC DRIVE CHARGE PUMP .....	50 - 35
3E19	HOUSING AND AIR FILTER, CAB .....	90 - 28	2C16	HYDROSTATIC DRIVE CHARGE PUMP (RING AND PINION) .....	50 - 36

## ALPHABETICAL INDEX - CONTINUED

GRID		PAGE	GRID		PAGE
2B10	HYDROSTATIC DRIVE CONTROL CABLE .....	50 - 4		<b>K</b>	
2C17	HYDROSTATIC DRIVE DISPLACEMENT CONTROL VALVE .....	50 - 38	1C8	KEY ENGINE SERVICE PARTS.....	24 - 4
2D19	HYDROSTATIC DRIVE HOSES, UPPER (FOUR WHEEL DRIVE) .....	50 - 66	4H25	KEY STOCK, METRIC KIT .....	121 - 84
2B8	HYDROSTATIC DRIVE LEVER, CABLE AND SWITC H.....	50 - 2	4K9	KEY STOCK, METRIC KIT .....	125 - 60
2C19	HYDROSTATIC DRIVE MOTOR.....	50 - 40	1C14	KEY, DAMPER.....	24 - 11
2E5	HYDROSTATIC DRIVE MOTOR.....	50 - 76	4J1	KIT, ADJUSTING SCREW, REEL DRIVE FLOW CONTROL VALVE.....	125 - 25
2C21	HYDROSTATIC DRIVE MOTOR KIT .....	50 - 42	3F15	KIT, AIR SUSPENSION SEAT .....	90 - 48
2D17	HYDROSTATIC DRIVE OIL LINES AND HOSES, LOWER (FOUR WHEEL DRIVE) .....	50 - 64	3F17	KIT, AIR SUSPENSION SEAT .....	90 - 50
2D13	HYDROSTATIC DRIVE OIL LINES AND HOSES, LOWER (TWO WHEEL DRIVE) .....	50 - 60	3F19	KIT, AIR SUSPENSION SEAT .....	90 - 52
2D15	HYDROSTATIC DRIVE OIL LINES AND HOSES, LOWER (TWO WHEEL DRIVE) .....	50 - 62	3F21	KIT, AIR SUSPENSION SEAT .....	90 - 54
2C14	HYDROSTATIC DRIVE PISTON.....	50 - 34	3H1	KIT, CAB HARDWARE .....	90 - 84
2C11	HYDROSTATIC DRIVE PUMP COVER .....	50 - 30	3G21	KIT, COMPRESSOR HARDWARE R134A .....	90 - 80
2C9	HYDROSTATIC DRIVE PUMP, FRONT COVER AND SHAFT .....	50 - 28	1J17	KIT, CONVENIENCE OUTLET .....	40 - 102
2C12	HYDROSTATIC DRIVE PUMP, HOUSING, SWASHPLATE, AND SERVO CYLINDERS.....	50 - 32	1E7	KIT, CYLINDER HEAD .....	24 - 54
2C22	HYDROSTATIC MOTOR VALVE .....	50 - 43	1J1	KIT, ELECTRICAL CONNECTOR SERVICE .....	40 - 86
2D21	HYDROSTATIC OIL COOLER LINES AND HOSES .....	50 - 68	1J3	KIT, ELECTRICAL CONNECTOR SERVICE .....	40 - 88
	<b>I</b>		1C11	KIT, ENGINE OVERHAUL.....	24 - 8
5C1	IDLER AND DRIVE TIGHTENER, CLEAN GRAIN ELEVATOR .....	130 - 22	1E7	KIT, ENGINE REBUILD.....	24 - 54
1B10	IDLER ARM, ENGINE FAN.....	20 - 6	4D9	KIT, GRAIN LEAK .....	120 - 54
1E13	IDLER PULLEY, AIR CONDITIONER COMPRESSOR ..	24 - 60	1C21	KIT, HEAD BOLT .....	24 - 18
3110	IDLER SHAFT, DRUM AND CHAIN, FEEDER CONVEYOR.....	110 - 32	2J21	KIT, HYDRAULIC FLAT O-RING.....	70 - 82
4C11	IDLER, BEATER DRIVE BELT .....	120 - 30	2C21	KIT, HYDROSTATIC DRIVE MOTOR.....	50 - 42
4C5	IDLER, STRIPPER BEATER DRIVE.....	120 - 24	3I5	KIT, LOCKOUT ADAPTER - CONTOUR MASTER (BELT PU & 4R CORN HEADS) .....	110 - 26
4C1	INDICATOR, CABLE AND BRACKETS, CONCAVE .....	120 - 20	4H25	KIT, METRIC KEY STOCK .....	121 - 84
4C3	INDICATOR, CONCAVE, CORN AND SMALL GRAIN ..	120 - 22	4K9	KIT, METRIC KEY STOCK .....	125 - 60
4B24	INDICATOR, SPIKE TOOTH.....	120 - 18	1C13	KIT, PISTON/LINER.....	24 - 10
1D22	INJECTION PUMP GEAR .....	24 - 44	4I25	KIT, SEAL REPAIR, REEL DRIVE FLOW CONTROL VALVE.....	125 - 24
1D22	INJECTION PUMP LUBE LINE.....	24 - 44	2F20	KIT, STEERING CYLINDER .....	60 - 33
1D22	INJECTION PUMP, ELECTRONIC FUEL.....	24 - 44	1J5	KIT, TERMINAL AND WIRING .....	40 - 90
1H21	INLET AIR TEMPERATURE SWITCH .....	40 - 58	1D10	KIT, WATER PUMP SEAL.....	24 - 32
2D1	INNER COVER.....	50 - 48	1C15	KIT,UNDERSIZE CRANKSHAFT (CONNECTING ROD JOURNAL) .....	24 - 12
2B22	INPUT SHAFT, TRANSMISSION .....	50 - 16	1E17	KIT,UNDERSIZED MAIN BEARING CRANKSHAFT.....	24 - 64
1C21	INSERTS, VALVE SEAT .....	24 - 18	4H17	KNIFEBANK AND HOUSING, STRAW CHOPPER .....	121 - 76
1F19	INSTRUMENT PANEL, CAB POST .....	40 - 6	4H19	KNIFEBANK AND HOUSING, STRAW CHOPPER .....	121 - 78
3E21	INSTRUMENT PANEL, CAB POST .....	90 - 30	4I21	KNOB, CONTROL, CHECK VALVE AND ROD, CHAFF SPREADER .....	125 - 20
1D14	INTAKE MANIFOLD.....	24 - 36		<b>L</b>	
1D14	INTAKE MANIFOLD GASKET.....	24 - 36	1G22	L H MAIN WIRING HARNESS, L H FRONT .....	40 - 34
3I22	INTAKE SHIELD.....	110 - 44	1G24	L H MAIN WIRING HARNESS, L H FRONT .....	40 - 36
1F1	INTAKE TUBES AND AIR CLEANER.....	30 - 8	1H5	L.H. AND R.H. MAIN WIRING HARNESS, REAR .....	40 - 42
1C21	INTAKE VALVES .....	24 - 18	3D3	L.H. FRONT CORNER SHEET AND DOOR .....	80 - 48
1D1	INTAKE, ENGINE OIL PUMP .....	24 - 23	1H1	L.H. MAIN WIRING HARNESS, L.H. CENTER .....	40 - 38
1B14	INTERCOOLER .....	20 - 10	3C22	L.H. SERVICE ACCESS SHIELD .....	80 - 42
3D23	INTERIOR TRIM PANELS, CAB.....	90 - 8	2F13	L.H. STEERING LINES .....	60 - 26
4G7	INTERMEDIATE SHAFT MOUNTING, CYLINDER DRIVE, DUAL-RANGE.....	121 - 42	3E9	LADDER AND HANDRAIL, OPERATOR'S PLATFORM .....	90 - 18
4G9	INTERMEDIATE SHEAVE, CYLINDER DRIVE, DUAL-RANGE .....	121 - 44	3B23	LADDER AND LANDING, REAR.....	80 - 18
	<b>J</b>		3C1	LADDER LANDING LATCH ARM, REAR.....	80 - 20
1C6	JETS, PISTON COOLING .....	24 - 2	1K2	LAMP ASSEMBLY, REAR L.H. SIDE .....	40 - 112
			1K1	LAMP ASSEMBLY, REAR R.H. SIDE.....	40 - 111
			1J13	LAMP, INSTALLATION .....	40 - 98
			1J25	LAMPS, LICENSE PLATE (EXPORT) .....	40 - 110
			3B23	LANDING AND LADDER, REAR.....	80 - 18
			3E17	LANDING AND MIRROR, CAB (R.H.) .....	90 - 26
			3E15	LANDING AND MIRROR, CAB, L.H. ....	90 - 24
			3C1	LANDING LATCH ARM, REAR LADDER.....	80 - 20
			3I14	LATCH HANDLE, FEED PLATE .....	110 - 36
			3E1	LATCH, CAB DOOR .....	90 - 10