

H42552 -UN-10NOV94



JOHN DEERE CTS COMBINE WITH 900 SERIES PLATFORM  
JOHN DEERE CTS (RICE) COMBINE SERIAL NO. (645501- )  
JOHN DEERE CTS (SMALL GRAIN) COMBINE SERIAL NO. (660401- )

(SPECIFICATIONS AND DESIGN SUBJECT TO CHANGE WITHOUT NOTICE)

## NOTE

FOR 900 SERIES PLATFORM PARTS INFORMATION, REFER TO JOHN DEERE 900 SERIES PLATFORM PARTS CATALOG - PC-2104.

FOR 40 SERIES CORN HEAD PARTS INFORMATION, REFER TO JOHN DEERE 40 SERIES CORN HEAD PARTS CATALOG - PC-1223.

FOR 50A SERIES ROW-CROP HEAD PARTS INFORMATION, REFER TO JOHN DEERE 50A SERIES ROW-CROP HEAD PARTS CATALOG - PC-1747.

FOR THREE-ROLLER BELT PICKUP PARTS INFORMATION, REFER TO JOHN DEERE THREE-ROLLER BELT PICKUP PARTS CATALOG - PC-2210.

FOR 918 AND 920 DRAPER PARTS INFORMATION, REFER TO JOHN DEERE 918 AND 920 DRAPER PLATFORMS PARTS CATALOG - PC-2212.

FOR 90 SERIES CORN HEAD PARTS INFORMATION, REFER TO JOHN DEERE 90 SERIES CORN HEAD PARTS CATALOG - PC-2404.

## IMPORTANT

THIS PARTS CATALOG CONTAINS PARTS INFORMATION FOR THE CTS COMBINE.  
VINTAGE IS DETERMINED BY THE COMBINE SERIAL NUMBER OR THE PRODUCT IDENTIFICATION NUMBER (PIN).  
IT IS IMPORTANT THAT THE CORRECT NUMBERS BE USED WHEN ORDERING PARTS.

## PRODUCT INFORMATION NUMBER (PIN) PLATE

THE PRODUCT IDENTIFICATION PLATE (PIN) IS LOCATED NEAR THE RIGHT HAND SIDE OF THE TOOL BOX.  
**AN EXAMPLE OF THE TWO-LINES ON THIS PIN PLATE IS:**

HO0CTSX640101  
COMBINE

(FIRST LINE)

HO - MANUFACTURING UNIT (HARVESTER WORKS)

0CTS - MODEL IDENTIFIER

X - CONFIGURATION CODE/MODELIDENTIFIER SUFFIX

640101 - SEQUENTIAL NUMBER USED IN SERIAL NO. COLUMN

(SECOND LINE)

COMBINE - TYPE OF PRODUCT

*COPYRIGHT (C) 2000. DEERE & COMPANY. MOLINE, ILLINOIS. ALL RIGHTS RESERVED.*

## PARTS LISTING INFORMATION

SERIAL NUMBER OR PRODUCT IDENTIFICATION NUMBER (PIN) INFORMATION SHOWS ON WHICH MACHINES PART MAY BE USED; FOR EXAMPLE:

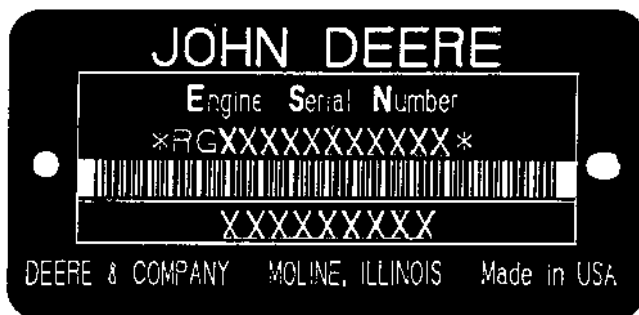
- THE PART CAN BE USED ON ALL MACHINES.
- 000000 THE PART CAN BE USED ON ALL MACHINES UP TO AND INCLUDING THE SERIAL NUMBER LISTED.
- 000000- THE PART CAN BE USED ON ALL MACHINES BEGINNING WITH THE SERIAL NUMBER LISTED.
- 000000-000000 THE PART CAN BE USED ON ALL MACHINES BETWEEN AND INCLUDING SERIAL NUMBERS LISTED.

WHEN XXXXXX'S ARE LISTED IN PLACE OF A SERIAL NUMBER, A SERIAL NUMBER CHANGE WAS MADE, BUT THE EXACT SERIAL NUMBER IS NOT AVAILABLE WHEN THE CATALOG WAS PRINTED.

### SHORT BLOCK SERIAL NUMBER PLATE

( -RGSB076882500)

RGP3513 -UN-01JAN94



RGP3513

THE REPLACEMENT SHORT BLOCK ASSEMBLY HAS A SERIAL NUMBER PLATE ATTACHED. THE ORIGINAL ENGINE SERIAL NUMBER MUST BE STAMPED ONTO THE NEW PLATE IN THE BLANK SPACE PROVIDED, AS A REFERENCE FOR YOUR DEALER. THE PLATE CAN BE ATTACHED WITH (2) 37H44 DRIVE SCREWS.

- |                                       |                            |
|---------------------------------------|----------------------------|
| 1. DESIGNATES ENGINE MANUFACTURER     | RG - WATERLOO ENGINE WORKS |
| 2. DESIGNATES REPLACEMENT SHORT BLOCK | SB                         |
| 3. DESIGNATES LITERS                  | XXX- 076 (7.6)             |
| 4. DESIGNATES THE PRODUCTION DATE     | 8825                       |
| 5. DESIGNATES COMPONENT SEQUENCE      | 00                         |

**Thanks very much for your reading,  
Want to get more information,  
Please click here, Then get the complete  
manual**

**JustClickHere** 

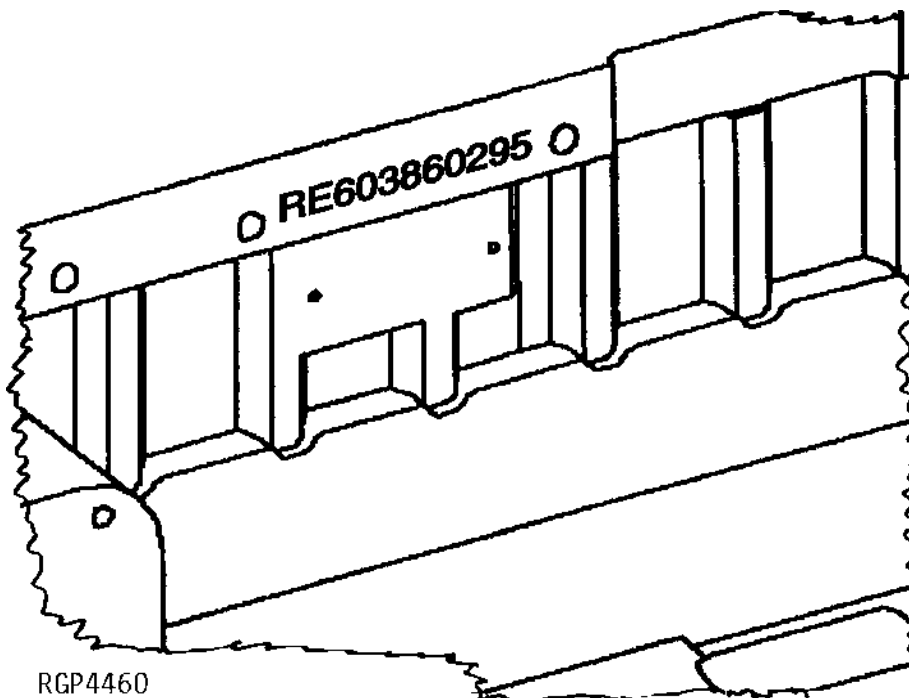
**NOTE:**

**If there is no response to click on the link above,  
please download the PDF document first, and then  
click on it.**

**Have any questions please write to me:  
[admin@servicemanualperfect.com](mailto:admin@servicemanualperfect.com)**

## SHORT BLOCK SERIAL NUMBER IDENTIFICATION

(RE603860295- )  
RGP4460 -UN-04MAR95



SERIAL NUMBER STAMPED INTO CASTING OF BLOCK NEAR PREVIOUS SERIAL NUMBER PLATE.

EXAMPLE: RE603860295

- |                                   |         |
|-----------------------------------|---------|
| 1. DESIGNATES SERVICE PART NUMBER | RE60386 |
| 2. DESIGNATES MONTH ASSEMBLED     | 02      |
| 3. DESIGNATES YEAR ASSEMBLED      | 95      |

## TWO LINE BAR CODED ENGINE SERIAL NUMBER PLATE (LOCATED ON FUEL INJECTION PUMP SIDE OF ENGINE)

RGP3513 -UN-01JAN94



RGP3513

### FIRST LINE

### DEFINES

RG - WATERLOO ENGINE WORKS

DESIGNATES ENGINE MANUFACTURER.

6

DESIGNATES NUMBER OF CYLINDERS.

076 (7.6 LITERS)

DESIGNATES LITER DISPLACEMENT.

H - AIR-TO-AIR

XXXXXX

DESIGNATES ENGINE SERIAL NUMBER.

### SECOND LINE

6076

CTS

### ADDITIONAL ENGINE INFORMATION

ENGINE MODEL      ENGINE SERIAL NO.

6076HH030 (260 HP) (      -565536)

6076HH034 (260 HP) (565537-      )

## **DIRECTION ARROW**

ARROWS ARE USED WITH ILLUSTRATIONS TO INDICATE THE FRONT OF THE UNIT. "RIGHT-HAND" AND "LEFT-HAND" SIDES ARE DETERMINED BY FACING IN THE DIRECTION OF MACHINE FORWARD TRAVEL.

## **BOX-ENCLOSED ILLUSTRATIONS**

A KEY NUMBER, SHOWN IN THE PARTS LIST, IS ASSIGNED TO A BOX ENCLOSING ALL PARTS SOLD AS A SERVICE ASSEMBLY. A BOX NOT KEYED INCLUDES NON-CURRENT PARTS.

## **KITS**

KIT INFORMATION WILL BE FOUND IMMEDIATELY FOLLOWING THE STORY IN WHICH IT IS USED. THE ILLUSTRATION IS REPEATED WITH ONLY THE KIT PARTS CALLED OUT AND WITH ALL OTHER PARTS SHOWN IN PHANTOM.

## **JDM REMANUFACTURED COMPONENTS**

THE SERVICE PARTS LISTED IN THIS CATALOG ARE INTENDED FOR THE REPAIR OF ORIGINAL EQUIPMENT COMPONENTS. ALTHOUGH MOST SERVICE PARTS MAY BE USED TO REPAIR REMANUFACTURED COMPONENTS, THE REMANUFACTURED DESIGN MAY CHANGE PARTS SUFFICIENTLY SO THAT SERVICE PARTS ARE INADEQUATE OR NOT USABLE.

## **BOLT AND CAP SCREW STRENGTH IDENTIFICATION**

BOLTS AND CAP SCREWS REQUIRED TO HAVE HIGH-STRENGTH QUALITIES EQUIVALENT TO SAE GRADE 8 ARE IDENTIFIED THROUGHOUT THIS CATALOG BY THE DESCRIPTION HS SAE 8. ALL STANDARD BOLTS AND CAP SCREWS ARE SAE GRADE 5 OR LOWER. BOLTS AND CAP SCREWS REQUIRED TO HAVE HIGH-STRENGTH QUALITIES EQUIVALENT TO PROPERTY CLASS 10.9 ARE IDENTIFIED THROUGHOUT THIS CATALOG BY THE DESCRIPTION HS 10.9. ALL STANDARD BOLTS AND CAP SCREWS ARE PROPERTY CLASS 8.8 OR LOWER.

## **SI UNITS OF MEASURE**

METRIC DIMENSIONS ARE GIVEN, WHERE APPLICABLE, THROUGHOUT THIS PARTS CATALOG.



## TRADEMARKS

THROUGHOUT THIS PARTS CATALOG, YOU WILL FIND THE FOLLOWING DEERE & COMPANY TRADEMARKS:

DIAL-A-SPEED™  
DIAL-A-MATIC™  
HARVESTRAK™  
CONTOUR MASTER™

POSI-TORQ™  
TORQ-GARD SUPREME®  
QUIK-TATCH™

## CHANGE INDICATOR LINE

CHANGES AFFECTING THE ORDERING OF PARTS ARE IDENTIFIED BY VERTICAL LINES MARKED IN THE LEFT-HAND MARGIN OF REVISED PARTS LISTING IMAGES. A LINE IS ALSO AT THE LEFT-HAND EDGE OF THE SAME PART NUMBER IN THE NUMERICAL INDEX TO SHOW THE LOCATION OF REVISED INFORMATION.

## FUNCTION CODE

(EXAMPLE - FC: 5000)

FUNCTION CODES ARE LOCATED ON EACH PAGE IN THE UPPER RIGHT-HAND CORNER IN THE BOX. THE CODE LISTED IS A GROUPING CODE THAT CAN BE USED FOR WARRANTIES AND FOR DTAC TO IDENTIFY CERTAIN AREAS.

## COMPLETE GOODS LISTINGS

COMPLETE GOODS ARE IN BOLD FACE TYPE. ORDER SEPARATELY. DO NOT INCLUDE ON REPLACEMENT PARTS ORDER.

### FOR INDIVIDUAL HEADER PARTS CATALOGS REFER TO:

PC-2104 - PARTS CATALOG FOR JOHN DEERE 900 SERIES PLATFORMS

PC-2210 - PARTS CATALOG FOR JOHN DEERE THREE ROLLER BELT PICK-UP

PC-2212 - PARTS CATALOG FOR JOHN DEERE 918 DRAPER PLATFORMS

PC-1747 - PARTS CATALOG FOR JOHN DEERE 50A SERIES ROW-CROP HEADS

PC-1223 - PARTS CATALOG FOR JOHN DEERE 40 SERIES CORN HEADS

PC2404 - PARTS CATALOG FOR JOHN DEERE 90 SERIES CORN HEADS

## SECTION INDEX

SECTION 10 - GENERAL INFORMATION

SECTION 20 - ENGINE FAN, INTERCOOLER AND SCREENS

SECTION 26 - 6076 ENGINE (HH030)

SECTION 30 - FUEL AND AIR

SECTION 40 - ELECTRICAL

SECTION 50 - POWER TRAIN

SECTION 60 - STEERING AND BRAKES

SECTION 70 - HYDRAULICS

SECTION 80 - SEPARATOR SHELL

SECTION 90 - OPERATOR'S STATION

SECTION 110 - FEEDER HOUSE

SECTION 120 - THRESHING AND SEPARATION

SECTION 121 - DRIVES

SECTION 125 - RESIDUE DISPOSAL

SECTION 130 - CLEAN GRAIN ELEVATOR, GRAIN TANK AND UNLOADING AUGER

SECTION 160 - DIAL-A-MATIC HEADER HEIGHT CONTROL

SECTION 170 - DECALS, BELTS AND CHAINS

SECTION 180 - NUMERICAL INDEX

## ALPHABETICAL INDEX

GRID	PAGE	GRID	PAGE
		A	
4E21		A/C COMPRESSOR (650401- ) R134A .....	90 - 90
4E22		A/C COMPRESSOR COVER (650401- ) R134A .....	90 - 91
4E21		A/C COMPRESSOR DIODE (650401- ) R134A .....	90 - 90
4E21		A/C COMPRESSOR MANIFOLD (650401- ) R134A .....	90 - 90
4E22		A/C COMPRESSOR PULLEY (650401- ) R134A .....	90 - 91
4E21		A/C COMPRESSOR SEAL (650401- ) R134A .....	90 - 90
4E24		A/C COMPRESSOR SEAL KIT (650401- ) R134A .....	90 - 93
1B22		A/C CONDENSER .....	20 - 16
3H1		A/C CONDENSER AND OIL COOLER .....	70 - 96
3I9		ACCESS DOOR, REAR HOOD AND STOP .....	80 - 26
3H23		ACCESS PLATFORM AND STEP, ENGINE .....	80 - 16
3J1		ACCESS SHIELD, SERVICE, L.H. ....	80 - 42
3I23		ACCESS SHIELD, SERVICE, R.H. ....	80 - 40
3E21		ACCUMULATOR AND MOUNTING, ONE GALLON (655401- ) .....	70 - 40
3E17		ACCUMULATOR AND MOUNTING, ONE HALF GALLON, SINGLE .....	70 - 36
3D7		ACCUMULATOR PRESSURE GAUGE AND WIRING HARNESS .....	70 - 2
3E19		ACCUMULATOR, ONE-HALF GALLON DUAL AND MOUNTING ( -655400) .....	70 - 38
4D6		ADJUST FORE-AND-AFT, SEAT .....	90 - 48
3C16		ADJUSTABLE REAR AXLE .....	60 - 33
3C19		ADJUSTABLE REAR AXLE STEERING TIE RODS .....	60 - 36
4D8		ADJUSTER, CAB SEAT HEIGHT .....	90 - 50
5G23		ADJUSTING BRACKET, CYLINDER DRIVE, DUAL-RANGE .....	121 - 46
1F12		AIR CLEANER AND INTAKE TUBES .....	30 - 12
2C9		AIR CONDITIONER AND HEATER SWITCH .....	40 - 24
2C7		AIR CONDITIONER PRESSURIZER FAN KIT (640401-650400) .....	40 - 22
2C5		AIR CONDITIONER WIRING HARNESS (660401- ) .....	40 - 20
2C3		AIR CONDITIONER, HEATER WIRING HARNESS ( -660400) .....	40 - 18
4C16		AIR CONDITIONING AND HEATER DUCTS .....	90 - 33
4E6		AIR CONDITIONING AND HEATER HOUSING FILTERS .....	90 - 74
4E16		AIR CONDITIONING COMPRESSOR ( -650400) R-12 .....	90 - 84
4E10		AIR CONDITIONING SYSTEM .....	90 - 78
4E12		AIR CONDITIONING SYSTEM, COMPRESSOR ( -650400) R-12 .....	90 - 80
4E14		AIR CONDITIONING SYSTEM, COMPRESSOR (650401- ) R134A .....	90 - 82
4E8		AIR CONDITIONING/HEATER AND PRESSURIZER FAN .....	90 - 76
3H21		AIR DEFLECTOR, AIR DUCT, ENGINE COMPARTM ENT .....	80 - 14
3H21		AIR DUCT AND AIR DEFLECTOR, ENGINE COMPA RTMENT .....	80 - 14
4C15		AIR FILTER AND HOUSING, CAB .....	90 - 32
1B22		AIR INTERCOOLER .....	20 - 16
4D10		AIR SEAT SUSPENSION (660401- ) .....	90 - 52
4D12		AIR SEAT SUSPENSION KITS (665401- ) .....	90 - 54
4D14		AIR SEAT SUSPENSION KITS (665401- ) .....	90 - 56
4D16		AIR SEAT SUSPENSION KITS (665401- ) .....	90 - 58
4D18		AIR SEAT SUSPENSION KITS (665401- ) .....	90 - 60
2C5		AIR SEAT WIRING HARNESS (660401- ) .....	40 - 20
4D12		AIR SUSPENSION KITS, SEAT (665401- ) .....	90 - 54
4D14		AIR SUSPENSION KITS, SEAT (665401- ) .....	90 - 56
4D16		AIR SUSPENSION KITS, SEAT (665401- ) .....	90 - 58
4D18		AIR SUSPENSION KITS, SEAT (665401- ) .....	90 - 60
4D10		AIR SUSPENSION, SEAT (660401- ) .....	90 - 52
1E23		ALTERNATOR ADJUSTING STRAP .....	26 - 76
2E1		ALTERNATOR AND VOLTAGE REGULATOR (95 AMP ) , BOSCH .....	40 - 64
2E3		ALTERNATOR MOUNTING .....	40 - 66
1E23		ALTERNATOR SUPPORT STRAP .....	26 - 76
2D24		ALTERNATOR, SHEAVE AND BELT - BOSCH .....	40 - 63
2C17		ANTENNA, SPEAKERS AND RADIO .....	40 - 32
5G15		ARM, LOCKOUT, DUAL-RANGE .....	121 - 38
3I3		ARM, REAR LADDER LANDING LATCH .....	80 - 20
2I6		ARM, STEERING .....	50 - 52
1E19		ARMATURE (DENSO) (12V F4) .....	26 - 72
3F18		ARMATURE, SOLENOID CONTROL VALVE KIT FOR AUGER SWING .....	70 - 62
4D24		ARMREST (L.H.) .....	90 - 66
4D22		ARMREST ADJUSTING MECHANISM, (R.H.) .....	90 - 64
2B24		ARMREST CONTROL PANEL .....	40 - 14
2B22		ARMREST WIRING HARNESS .....	40 - 12
4D20		ARMREST WITH GLOVE BOX (R.H.) .....	90 - 62
5D13		ARMS, FRAME, PRECLEANER CHAFFER .....	120 - 56
1D3		ARMS, ROCKER .....	26 - 26
1C9		ASSEMBLY, COMPLETE BLOCK (ESN 500000- ) .....	26 - 6
2H11		ASSEMBLY, HYDROSTATIC DRIVE PISTON .....	50 - 32
3G1		ASSEMBLY, SIX STACK SOLENOID CONTROL VALVE (660401- ) .....	70 - 72
3B23		ATTENUATOR,UPPER, HYDRAULIC STEERING HOSES .....	60 - 16
6H18		AUGER BELTS .....	170 - 2
6E2		AUGER CHAIN TIGHTENER, LOWER TAILINGS .....	125 - 70
5C19		AUGER CLEANOUT DOOR, SHOE GRAIN SUPPLY, HANDLES AND LATCHES .....	120 - 36
6E8		AUGER DRIVE SHIELD, UPPER TAILINGS .....	125 - 76
6E10		AUGER DRIVE SHIELD, UPPER TAILINGS .....	125 - 78
3I17		AUGER DRIVE SHIELDS (R-H SIDE) .....	80 - 34
6E4		AUGER DRIVE TIGHTENER, LOWER TAILINGS .....	125 - 72
6E8		AUGER DRIVE, UPPER TAILINGS .....	125 - 76
6E10		AUGER DRIVE, UPPER TAILINGS .....	125 - 78
6F9		AUGER HOUSING, LOADING, UPPER CLEAN GRAIN .....	130 - 12
6F11		AUGER HOUSING, LOADING, UPPER CLEAN GRAIN (660401- ) .....	130 - 14
2D21		AUGER LIGHT, UNLOADING, GRAIN TANK .....	40 - 60
6G5		AUGER LOWER GEAR CASE, VERTICAL .....	130 - 34
2D7		AUGER SENSOR AND WIRING HARNESS, UNLOADING (660401- ) .....	40 - 46
3F17		AUGER SWING SOLENOID CONTROL VALVE .....	70 - 61
3F18		AUGER SWING, ARMATURE, SOLENOID CONTROL VALVE KIT .....	70 - 62

## ALPHABETICAL INDEX - CONTINUED

GRID	PAGE	GRID	PAGE
3F16	70 - 60	1C20	26 - 17
3G11	70 - 82	2H21	50 - 42
3G13	70 - 84	2G18	50 - 14
6G11	130 - 40	2G20	50 - 16
6G9	130 - 38	6H21	170 - 5
6F9	130 - 12	5C17	120 - 34
6D21	125 - 64	5C11	120 - 28
2D7	40 - 46	5C13	120 - 30
6E23	130 - 2	5C15	120 - 32
6H3	130 - 56	5C9	120 - 26
6G22	130 - 50	5C7	120 - 24
6G15	130 - 44	5C5	120 - 22
6G13	130 - 42	6H6	130 - 60
6F13	130 - 16	5H17	121 - 64
6F15	130 - 18	4H11	110 - 54
6H19	170 - 3	4D3	90 - 44
6D19	125 - 62	4D4	90 - 45
6H4	130 - 58	4D5	90 - 46
6H6	130 - 60	6H19	170 - 3
6H9	130 - 64	6H18	170 - 2
6E8	125 - 76	6H21	170 - 5
6E10	125 - 78	6H19	170 - 3
6E6	125 - 74	6H18	170 - 2
6G7	130 - 36	6H21	170 - 5
6H1	130 - 54	6H19	170 - 3
5C22	120 - 40	6H20	170 - 4
5C20	120 - 38	6H20	170 - 4
2B14	40 - 4	6H21	170 - 5
2B20	40 - 10	6H19	170 - 3
2G9	50 - 5	6H20	170 - 4
2H2	50 - 23	6H20	170 - 4
3C17	60 - 34	6H21	170 - 5
2G8	50 - 4	6H21	170 - 5
3C16	60 - 33	6H18	170 - 2
3C23	60 - 40	1C9	26 - 6
3C15	60 - 32	1C13	26 - 10
<b>B</b>			
4D1	90 - 42	1C11	26 - 8
2F10	40 - 98	1D1	26 - 24
6H9	130 - 64	2E1	40 - 64
2D19	40 - 58	2D24	40 - 63
2E19	40 - 82	4C7	90 - 24
5E16	120 - 84	6G11	130 - 40
2H1	50 - 22	3B20	60 - 13
6G24	130 - 52	2F2	40 - 90
2I1	50 - 47	5C3	120 - 20
1C20	26 - 17	2C10	40 - 25
1D12	26 - 38	3F25	70 - 70
6D25	125 - 68	3B20	60 - 13
2H2	50 - 23	3B13	60 - 6
2H3	50 - 24	3B15	60 - 8
		3B9	60 - 2

## ALPHABETICAL INDEX - CONTINUED

GRID		PAGE	GRID		PAGE
3B11	BRAKE PEDALS .....	60 - 4	2E17	CENTRAL ELECTRONICS MODULE AND CIRCUIT BOARDS .....	40 - 80
3B17	BRAKE SHOES AND DRUM.....	60 - 10	6C20	CHAFF SPREADER (BELT TYPE) FRAME, SHIELDS AND HANDLES ( -650400).....	125 - 38
3B19	BRAKE SLAVE CYLINDER .....	60 - 12	6C24	CHAFF SPREADER (BELT TYPE) PAN AND SEALS ( -650400) .....	125 - 42
2E9	BREAKERS, CIRCUIT, ENGINE COMPARTMENT .....	40 - 72	6D15	CHAFF SPREADER (DUAL MOTOR) HOSES AND LINES (650401- ) .....	125 - 58
2E6	BREAKERS, CIRCUIT, ENGINE COMPARTMENT ( -660400) .....	40 - 69	6D1	CHAFF SPREADER (DUAL MOTOR) PAN, WINGS AND SEALS (650401- ) .....	125 - 44
2E7	BREAKERS, CIRCUIT, ENGINE COMPARTMENT (660401- ) .....	40 - 70	6C22	CHAFF SPREADER (DUAL MOTOR) SHIELDS AND HANDLES (650401- ) .....	125 - 40
1C24	BUSHING, CAMSHAFT .....	26 - 21	6D5	CHAFF SPREADER CONTROL, CHECK VALVE, ROD AND KNOB.....	125 - 48
1C7	BUSHING, CAMSHAFT (6076) .....	26 - 4	6C16	CHAFF SPREADER DISC (BELT TYPE) ( -650400) .....	125 - 34
1D9	BYPASS VALVE, OIL FILTER.....	26 - 34	6C18	CHAFF SPREADER DISC (DUAL MOTOR) (650401- ) .....	125 - 36
<b>C</b>					
4C15	CAB AIR FILTER AND HOUSING .....	90 - 32	6D13	CHAFF SPREADER HOSES, LINES AND MOTOR ( -650400) .....	125 - 56
2B11	CAB DOME LIGHT .....	40 - 1	6D9	CHAFF SPREADER LINES AND FITTINGS .....	125 - 52
4B20	CAB DOOR AND GLASS .....	90 - 12	6D11	CHAFF SPREADER LINES, HOSES, VALVE AND PUMP .....	125 - 54
4B18	CAB DOOR LATCH.....	90 - 10	3D14	CHAFF SPREADER MOTOR (EATON) (655929- ) .....	70 - 9
4B22	CAB FRAME AND SUPPORT.....	90 - 14	6D3	CHAFF SPREADER MOUNTING SUPPORT .....	125 - 46
4F3	CAB HARDWARE KIT .....	90 - 96	6D17	CHAFF SPREADER PUMP .....	125 - 60
4B16	CAB INTERIOR TRIM PANELS .....	90 - 8	5H3	CHAFFER DRIVE, CONVEYOR AUGERS AND SIEVE .....	121 - 50
4C11	CAB L.H. LANDING AND MIRROR (650401- ) .....	90 - 28	5D15	CHAFFER ELEMENT.....	120 - 58
4C9	CAB LANDING AND MIRROR (L.H.) ( -650400) .....	90 - 26	5D17	CHAFFER ELEMENT.....	120 - 60
4C13	CAB LANDING AND MIRROR (R.H.) .....	90 - 30	5D19	CHAFFER EXTENSION ELEMENT .....	120 - 62
4B10	CAB PANELS AND FLOOR MAT .....	90 - 2	5D21	CHAFFER FRAME .....	120 - 64
2B16	CAB POST INSTRUMENT PANEL .....	40 - 6	5D13	CHAFFER FRAME ARMS, PRECLEANER .....	120 - 56
4C17	CAB POST INSTRUMENT PANEL .....	90 - 34	5D9	CHAFFER FRAME, PRECLEANER .....	120 - 52
4F5	CAB POST INSTRUMENT PANEL LH (EXPORT ONLY) .....	90 - 98	5D5	CHAFFER, PRECLEANING ( -655400) .....	120 - 48
4B14	CAB REAR AND SIDE SEALS .....	90 - 6	5D7	CHAFFER, PRECLEANING (655401- ) .....	120 - 50
4B24	CAB ROOF AND SUPPORTS.....	90 - 16	6E2	CHAIN TIGHTENER, LOWER TAILINGS AUGER .....	125 - 70
2B18	CAB ROOF LIGHTS .....	40 - 8	4G16	CHAIN, IDLER SHAFT AND DRUM, FEEDER CONVEYOR.....	110 - 34
4D8	CAB SEAT HEIGHT ADJUSTER .....	90 - 50	6D25	CHAIN, SPROCKETS AND BEARINGS, TAILINGS ELEVATOR CONVEYOR .....	125 - 68
4B12	CAB SOUND DEADENING, FOAM AND SEALS.....	90 - 4	6H3	CHANNEL AND COVERS, CROSS AUGER .....	130 - 56
2B12	CAB WIRING HARNESS.....	40 - 2	6G7	CHARGE HOUSING, VERTICAL UNLOADING AUGER.....	130 - 36
2G12	CABLE AND SWITCH, HYDROSTATIC DRIVE LEVE R.....	50 - 8	3F3	CHARGE PRESSURE HOSE .....	70 - 46
5C3	CABLE, CONCAVE INDICATOR, AND BRACKETS .....	120 - 20	5H17	CHARGE PUMP MOUNTING AND SHEAVE, REEL/ BELT PICKUP .....	121 - 64
2G14	CABLE, HYDROSTATIC DRIVE CONTROL.....	50 - 10	2H12	CHARGE PUMP, HYDROSTATIC DRIVE .....	50 - 33
2D19	CABLES, BATTERY.....	40 - 58	6D5	CHECK VALVE, ROD, KNOB AND CONTROL, CHAFF SPREADER .....	125 - 48
2H20	CAM LOBE MOTOR .....	50 - 41	6G5	CHUTE, GRAIN TANK CLEAN OUT CHUTE.....	130 - 34
2I2	CAM, CARRIER AND PISTONS .....	50 - 48	2B16	CIRCUIT BOARD, COMBINE DATA CENTER.....	40 - 6
2G24	CAM, SHIFTER, TRANSMISSION AND DIFFERENTIAL .....	50 - 20	4C17	CIRCUIT BOARD, COMBINE DATA CENTER.....	90 - 34
1C24	CAMSHAFT .....	26 - 21	2E17	CIRCUIT BOARDS, CENTRAL ELECTRONICS MODU LE .....	40 - 80
1C24	CAMSHAFT BUSHING .....	26 - 21	2E9	CIRCUIT BREAKER RELAYS .....	40 - 72
1C7	CAMSHAFT BUSHING (6076).....	26 - 4	2E6	CIRCUIT BREAKER RELAYS ( -660400) .....	40 - 69
1C24	CAMSHAFT FOLLOWER.....	26 - 21	2E7	CIRCUIT BREAKER RELAYS (660401- ) .....	40 - 70
1D3	CAMSHAFT FOLLOWER.....	26 - 26	2E9	CIRCUIT BREAKERS, ENGINE COMPARTMENT.....	40 - 72
1C24	CAMSHAFT GEAR.....	26 - 21	2E6	CIRCUIT BREAKERS, ENGINE COMPARTMENT ( -660400) .....	40 - 69
2H1	CAP, BEARING, FINAL DRIVE.....	50 - 22	2E7	CIRCUIT BREAKERS, ENGINE COMPARTMENT (660401- ) .....	40 - 70
6G5	CAP, GRAIN TANK CLEAN OUT CHUTE .....	130 - 34			
1C7	CAPS, MAIN BEARING .....	26 - 4			
2I4	CAPS, YOKE AND PIVOTS .....	50 - 50			
2I2	CARRIER, PISTONS AND CAM .....	50 - 48			
2J17	CASE DRAIN HYDRAULIC LINES, FOUR WHEEL DRIVE .....	50 - 88			
2B16	CDC (COMBINE DATA CENTER) .....	40 - 6			
4C17	CDC (COMBINE DATA CENTER) .....	90 - 34			
1D22	CENTER HOUSING, TURBOCHARGER (AIRESEARCH) .....	26 - 50			
1D23	CENTER HOUSING, TURBOCHARGER (SCHWITZER) .....	26 - 51			
2C23	CENTER, L.H. MAIN WIRING HARNESS .....	40 - 38			

## ALPHABETICAL INDEX - CONTINUED

GRID		PAGE	GRID		PAGE
6F18	CLEAN GRAIN ELEVATOR DRIVE TIGHTENER AND IDLER.....	130 - 22	5B20	CONCAVE, RASP BAR AND GRATE .....	120 - 12
6F16	CLEAN GRAIN ELEVATOR GEARCASE AND SHEAVE.....	130 - 20	5C1	CONCAVE, SPIKE TOOTH .....	120 - 18
6F13	CLEAN GRAIN LOADING AUGER.....	130 - 16	5B24	CONCAVE, SPIKE-TOOTH .....	120 - 16
6F15	CLEAN GRAIN LOADING AUGER, FOLD (660401- ) .....	130 - 18	1B22	CONDENSER, A/C.....	20 - 16
6E23	CLEAN GRAIN LOWER AUGER AND HINGED DOOR.....	130 - 2	3H1	CONDENSER, A/C.....	70 - 96
6F1	CLEAN GRAIN LOWER ELEVATOR AND CONVEYOR CHAIN .....	130 - 4	1C18	CONNECTING RODS (6076) .....	26 - 15
6F3	CLEAN GRAIN LOWER ELEVATOR AND CONVEYOR CHAIN .....	130 - 6	2F22	CONNECTORS AND TERMINALS, SUPPLEMENTARY (6076).....	40 - 110
6G5	CLEAN OUT CHUTE, GRAIN TANK .....	130 - 34	1E13	CONNECTORS, ELECTRICAL, WEATHERPACK (6076).....	26 - 66
5D3	CLEANING FAN INTAKE SHIELDS .....	120 - 46	1E7	CONNECTORS, FUEL INJECTION PUMP HOUSING (6076HH030, HH034) .....	26 - 60
5C24	CLEANING FANS AND SHROUDS .....	120 - 42	2E11	CONNECTORS, LOWER HARNESS, 6076 ENGINE ENGINE .....	40 - 74
5D1	CLEANING FANS AND SHROUDS .....	120 - 44	2E13	CONNECTORS, UPPER HARNESS, 6076 ENGINE .....	40 - 76
5H5	CLEANING SHOE AND CONVEYOR AUGER PIVOT ARM DRIVE TIGHTENER.....	121 - 52	2F14	CONNECTORS, WEATHERPACK .....	40 - 102
4G7	CLOSURE PLATES, FEEDER HOUSE - CONTOUR MASTER (660401- ).....	110 - 24	2B14	CONSOLE PANEL, OVERHEAD.....	40 - 4
4E16	CLUTCH, COMPRESSOR ( -650400) R-12 .....	90 - 84	4G7	CONTOUR MASTER - FEEDER HOUSE FRAME, TILT BEAM & CLOSURE PLATES (660401- ).....	110 - 24
4E17	CLUTCH, COMPRESSOR ( -650400) R-12 .....	90 - 85	4H7	CONTOUR MASTER DRIVESHAFT (660401- ).....	110 - 50
5G7	CLUTCH, HEADER ELECTROMAGNETIC.....	121 - 30	3E11	CONTOUR MASTER HYDRAULIC HOSES, L.H SIDE (OPTIONAL) (660401- ) .....	70 - 30
4G22	CLUTCH, SLIP, FEEDER HOUSE .....	110 - 40	4G11	CONTOUR MASTER LOCKOUT ADAPTER KIT (BELT PU & 4R CORN HEADS) (660401- ) .....	110 - 28
4E16	COIL, COMPRESSOR ( -650400) R-12 .....	90 - 84	3F11	CONTOUR MASTER SOLENOID CONTROL RELIEF VALVE .....	70 - 54
1E19	COIL, FIELD WINDING (12V F4) .....	26 - 72	3F21	CONTOUR MASTER SOLENOID CONTROL VALVE (660401- ).....	70 - 66
1F8	COLD WEATHER STARTING AID ( -655614).....	30 - 8	3G17	CONTOUR MASTER TILT CYLINDER (660401- ).....	70 - 88
1F10	COLD WEATHER STARTING AID (655615- ).....	30 - 10	3G19	CONTOUR MASTER TILT CYLINDER HOSES AND FITTINGS (660401- ) .....	70 - 90
3C3	COLUMN, STEERING (LOWER).....	60 - 20	4G5	CONTOUR MASTER, FEEDER HOUSE SHELL, WEAR PLATES AND SEALS (660401- ) .....	110 - 22
3C1	COLUMN, STEERING (UPPER).....	60 - 18	4G9	CONTOUR MASTER, LOCKOUT ASSEMBLY (OPTIONAL) (660401- ) .....	110 - 26
4E2	COLUMN, STEERING (UPPER).....	90 - 70	2G14	CONTROL CABLE, HYDROSTATIC DRIVE.....	50 - 10
2B16	COMBINE DATA CENTER .....	40 - 6	2B24	CONTROL PANEL, ARMREST .....	40 - 14
4C17	COMBINE DATA CENTER .....	90 - 34	3F11	CONTROL RELIEF VALVE MODULE, SOLENOID .....	70 - 54
3H17	COMPARTMENT, ENGINE .....	80 - 10	1E5	CONTROL UNIT, ELECTRONIC (ROBERT BOSCH) (6076HH030, HH034) (LATE DESIGN) .....	26 - 58
3H19	COMPARTMENT, ENGINE .....	80 - 12	2I8	CONTROL VALVE ( -655400).....	50 - 54
3H21	COMPARTMENT, ENGINE, AIR DUCT AND AIR DEFLECTOR.....	80 - 14	2I9	CONTROL VALVE (655401- ).....	50 - 55
1C9	COMPLETE BLOCK ASSEMBLY (ESN 500000- ).....	26 - 6	3F18	CONTROL VALVE KIT, ARMATURE, SOLENOID, AUGER SWING .....	70 - 62
4E17	COMPRESSOR CLUTCH ( -650400) R-12 .....	90 - 85	3G1	CONTROL VALVE MODULE, SIX STACK SOLENOID ASSEMBLY & MOUNTINGS (660401- ) .....	70 - 72
4E16	COMPRESSOR COIL ( -650400) R-12 .....	90 - 84	2I10	CONTROL VALVE SOLENOID .....	50 - 56
4E18	COMPRESSOR HARDWARE KIT ( -650400) R-12 .....	90 - 86	6D7	CONTROL VALVE, FLOW, REEL DRIVE .....	125 - 50
4E23	COMPRESSOR HARDWARE KIT (650401- ) R134A.....	90 - 92	2H15	CONTROL VALVE, HYDROSTATIC DRIVE, DISPLACEMENT .....	50 - 36
4E19	COMPRESSOR PARTS ( -650400) R-12 .....	90 - 88	3F21	CONTROL VALVE, SOLENOID - CONTOUR MASTER (660401- ).....	70 - 66
4E17	COMPRESSOR SERVICE VALVES ( -650400) R-12 .....	90 - 85	3F25	CONTROL VALVE, SOLENOID, BRACKETS.....	70 - 70
4E12	COMPRESSOR, AIR CONDITION SYSTEM ( -650400) R-12 .....	90 - 80	3H5	CONTROL VALVE, SOLENOID, ENGINE GEARCASE PRESSURE REGULATOR .....	70 - 100
4E16	COMPRESSOR, AIR CONDITIONING ( -650400) R-12 .....	90 - 84	3F19	CONTROL VALVE, SOLENOID, REEL FORE/AFT (650401- ).....	70 - 64
6H19	COMPRESSOR, AIR CONDITIONING BELTS.....	170 - 3	6D5	CONTROL, CHECK VALVE, ROD AND KNOB, CHAFF SPREADER .....	125 - 48
4E14	COMPRESSOR, AIR CONDITIONING SYSTEM (650401- ) R134A.....	90 - 82	2F6	CONVENIENCE OUTLET (660401- ).....	40 - 94
4E16	COMPRESSOR, CLUTCH PULLEY ( -650400) R-12 .....	90 - 84	3D16	CONVERSION PARTS, HUDRAULIC, 200 SERIES CUTTING PLATFORM.....	70 - 11
2D18	CONCAVE ADJUSTING MOTOR .....	40 - 57	5H5	CONVEYOR AUGER AND CLEANING SHOE PIVOT ARM DRIVE TIGHTENER.....	121 - 52
5C3	CONCAVE INDICATOR, CABLE AND BRACKETS.....	120 - 20	6H18	CONVEYOR AUGER BELTS, .....	170 - 2

## ALPHABETICAL INDEX - CONTINUED

GRID		PAGE	GRID		PAGE
5H3	CONVEYOR AUGERS, SIEVE AND CHAFFER DRIVE	121 - 50	5G23	CYLINDER DRIVE ADJUSTING BRACKET, DUAL-RANGE .....	121 - 46
6F1	CONVEYOR CHAIN AND ELEVATOR, CLEAN GRAIN LOWER .....	130 - 4	5G13	CYLINDER DRIVE GEARCASE, DUAL-RANGE .....	121 - 36
6F3	CONVEYOR CHAIN AND ELEVATOR, CLEAN GRAIN LOWER .....	130 - 6	5G19	CYLINDER DRIVE INTERMEDIATE SHAFT MOUNTING, DUAL-RANGE .....	121 - 42
4G16	CONVEYOR IDLER SHAFT, DRUM AND CHAIN, FEEDER.....	110 - 34	5G21	CYLINDER DRIVE INTERMEDIATE SHEAVE, DUAL-RANGE .....	121 - 44
1D17	COOLANT HEATER, ENGINE (6076).....	26 - 44	5G17	CYLINDER DRIVE TIGHTENER, DUAL-RANGE .....	121 - 40
1F18	COOLANT RECOVERY TANK .....	30 - 18	5G12	CYLINDER DRIVE, SINGLE RANGE .....	121 - 35
1D9	COOLER AND OIL FILTER HOUSING.....	26 - 34	5G11	CYLINDER DRIVE, SLOW SPEED.....	121 - 34
1D9	COOLER, ENGINE OIL .....	26 - 34	1D1	CYLINDER HEAD (6076).....	26 - 24
1F11	COOLER, FUEL .....	30 - 11	1D1	CYLINDER HEAD BOLTS (6076) .....	26 - 24
3H1	COOLER, OIL, .....	70 - 96	1D1	CYLINDER HEAD GASKET (6076).....	26 - 24
6H19	COOLING FAN BELTS .....	170 - 3	1E15	CYLINDER HEAD GASKET KIT (6076) .....	26 - 68
3J7	CORNER SHEET AND DOOR, FRONT, L.H. ....	80 - 48	1C18	CYLINDER LINERS (6076) .....	26 - 15
3J3	CORNER SHEET, R.H., FRONT.....	80 - 44	3F14	CYLINDER SPEED AND REEL LIFT, SOLENOID CONTROL VALVE.....	70 - 58
3J5	CORNER SHEET, REAR, L H .....	80 - 46	3F9	CYLINDER SPEED HYDRAULIC LINES AND HOSES ..	70 - 52
5H1	COUNTERSHAFT DRIVE, SECONDARY.....	121 - 48	3B19	CYLINDER, BRAKE SLAVE .....	60 - 12
6H4	COUNTERSHAFT DRIVE, UNLOADING AUGER .....	130 - 58	3B15	CYLINDER, BRAKE, MASTER .....	60 - 8
5G3	COUNTERSHAFT GEARCASE, PRIMARY .....	121 - 26	3G9	CYLINDER, DRIVE, GRAIN TANK UNLOADING.....	70 - 80
5G5	COUNTERSHAFT, PRIMARY, GEARCASE .....	121 - 28	3D24	CYLINDER, HEADER LIFT, HYDRAULIC .....	70 - 19
1B19	COUPLING WITH HUB, ENGINE GEARCASE .....	20 - 13	3G7	CYLINDER, HYDRAULIC, UNLOADING AUGER SWING, LINES AND HOSES .....	70 - 78
5F3	COUPLING, GEARBOX AND SHAFT, MODULE.....	121 - 2	3C13	CYLINDER, STEERING (4-WHEEL DRIVE).....	60 - 30
1E18	COVER STARTER SOLENOID (DENSO) .....	26 - 71	5B18	CYLINDER, THRESHING, RASP BAR .....	120 - 10
5C17	COVER, BEATER .....	120 - 34	5B22	CYLINDER, THRESHING, SPIKE TOOTH.....	120 - 14
4E22	COVER, COMPRESSOR A/C (650401- ) R134A .....	90 - 91	3G17	CYLINDER, TILT - CONTOUR MASTER (660401- ) .....	70 - 88
3H17	COVER, ENGINE.....	80 - 10	3G19	CYLINDER, TILT, HOSES AND FITTINGS - CONTOUR MASTER (660401- ) .....	70 - 90
2H5	COVER, FRONT, HYDROSTATIC DRIVE PUMP .....	50 - 26	3G15	CYLINDER, UNLOADING AUGER SWING HYDRAULIC (655552- ) .....	70 - 86
2G24	COVER, HOUSING, TRANSMISSION AND DIFFERENTIAL .....	50 - 20	3B11	CYLINDERS, MASTER .....	60 - 4
2H8	COVER, HYDROSTATIC DRIVE PUMP.....	50 - 29			
1C23	COVER, INJECTION PUMP ACCESS (6076) .....	26 - 20		D	
2H23	COVER, INNER .....	50 - 44	1C19	DAMPER KEY (6076) .....	26 - 16
2I1	COVER, QUILL AND BEARING .....	50 - 47	1E17	DAMPER, CRANKSHAFT, NO PULLEY GROOVES.....	26 - 70
1D4	COVER, ROCKER ARM .....	26 - 27	2B16	DATA CENTER, COMBINE.....	40 - 6
5B9	COVER, THRESHING CYLINDER .....	120 - 1	4C17	DATA CENTER, COMBINE.....	90 - 34
1C23	COVER, TIMING GEAR (6076).....	26 - 20	6J14	DECALS, FRONT.....	170 - 48
6H3	COVERS AND CHANNEL, CROSS AUGER .....	130 - 56	6J13	DECALS, FRONT WHEEL.....	170 - 46
5E14	COVERS AND FRAME, MODULE .....	120 - 82	6J14	DECALS, REAR .....	170 - 48
5E12	CRANK OUT SYSTEM, MODULE .....	120 - 80	6J13	DECALS, REAR WHEEL.....	170 - 46
1B20	CRANKCASE OIL DRAIN, ENGINE .....	20 - 14	6H22	DECALS, SAFETY AND LOCATIONS .....	170 - 6
1C19	CRANKSHAFT (6076) .....	26 - 16	6H24	DECALS, SAFETY AND LOCATIONS .....	170 - 8
1E17	CRANKSHAFT DAMPER, NO PULLEY GROOVES .....	26 - 70	6I1	DECALS, SAFETY AND LOCATIONS .....	170 - 10
1C23	CRANKSHAFT FRONT OIL SEAL (6076) .....	26 - 20	6I3	DECALS, SAFETY AND LOCATIONS .....	170 - 12
6G24	CROSS AUGER BEARING PLATE, L.H. ....	130 - 52	6I5	DECALS, SAFETY AND LOCATIONS .....	170 - 14
6H3	CROSS AUGER COVERS AND CHANNEL.....	130 - 56	6I7	DECALS, SAFETY AND LOCATIONS .....	170 - 16
6H1	CROSS AUGERS, GRAIN TANK .....	130 - 54	6I9	DECALS, SAFETY AND LOCATIONS .....	170 - 18
4E1	CUP HOLDER (660401- ) .....	90 - 68	6I11	DECALS, SAFETY AND LOCATIONS - FRENCH.....	170 - 20
6C12	CURTAIN, LOWER, STRAW SPREADER .....	125 - 30	6I13	DECALS, SAFETY AND LOCATIONS - FRENCH.....	170 - 22
6C10	CURTAIN, SPREADER, UPPER.....	125 - 28	6I15	DECALS, SAFETY AND LOCATIONS - FRENCH.....	170 - 24
6G1	CURTAINS, GRAIN TANK.....	130 - 30	6I17	DECALS, SAFETY AND LOCATIONS - FRENCH.....	170 - 26
3D16	CUTTING PLATFORM , 200 SERIES CONVERSION PARTS .....	70 - 11	6I19	DECALS, SAFETY AND LOCATIONS - FRENCH.....	170 - 28
3G11	CYLINDER AND MOUNTING, UNLOADING AUGER SWING .....	70 - 82	6I21	DECALS, SAFETY AND LOCATIONS - ITALIAN .....	170 - 30
3G13	CYLINDER AND MOUNTING, UNLOADING AUGER SWING (650401-655551) .....	70 - 84	6J1	DECALS, SAFETY AND LOCATIONS - ITALIAN .....	170 - 34
1C7	CYLINDER BLOCK FITTINGS (6076).....	26 - 4	6J3	DECALS, SAFETY AND LOCATIONS - ITALIAN .....	170 - 36
5B9	CYLINDER COVER, THRESHING .....	120 - 1	6J5	DECALS, SAFETY AND LOCATIONS - ITALIAN .....	170 - 38
5B14	CYLINDER DOOR (CORN & GRAIN) (650401-655400).....	120 - 6	6J7	DECALS, SAFETY AND LOCATIONS - ITALIAN .....	170 - 40
5B12	CYLINDER DOOR (FOR CORN) ( -650400) .....	120 - 4	6J17	DECALS, SEPARATOR MODULE SAFETY.....	170 - 51
5B16	CYLINDER DOOR (655401- ) .....	120 - 8	6J16	DECALS, TOP .....	170 - 50
			6B10	DECK, SUPPORTS AND FINS, STRAW CHOPPER.....	125 - 2

## ALPHABETICAL INDEX - CONTINUED

GRID		PAGE	GRID		PAGE
2D11	DEFLECTOR - LESS HARVESTRAK (655542- )	40 - 50	5G1	DRIVE SHAFT, GEARCASE MOUNTING AND PRIMARY COUNTERSHAFT	121 - 24
6H14	DIAL-A-MATIC ELECTRICAL HARNESS	160 - 4	3I21	DRIVE SHIELD, R.H. REAR	80 - 38
6H12	DIAL-A-MATIC HEADER HEIGHT CONTROL HYDRAULIC LINE AND VALVE BLOCK	160 - 2	3I17	DRIVE SHIELDS, AUGER (R-H SIDE)	80 - 34
6H13	DIAL-A-MATIC HEADER HEIGHT CONTROL VALVE BLOCK SOLENOID	160 - 3	4F23	DRIVE SHIELDS, CONTOUR MASTER FEEDER HOUSE (660401-660432)	110 - 16
3E15	DIAL-A-MATIC HEADER HEIGHT CONTROL, VALVE BLOCK SOLENOID	70 - 34	4G1	DRIVE SHIELDS, CONTOUR MASTER FEEDER HOUSE (661186- )	110 - 18
2G10	DIFFERENTIAL AND TRANSMISSION HOUSING	50 - 6	4F21	DRIVE SHIELDS, SAFETY STOP, FEEDER HOUSE	110 - 14
2G22	DIFFERENTIAL GEARS	50 - 18	3I13	DRIVE SIDE SHIELDS, SEPARATOR	80 - 30
2G22	DIFFERENTIAL SHAFTS	50 - 18	6F18	DRIVE TIGHTENER AND IDLER, CLEAN GRAIN ELEVATOR	130 - 22
4E21	DIODE, A/C COMPRESSOR (650401- ) R134A	90 - 90	5H15	DRIVE TIGHTENER, FEEDER HOUSE	121 - 62
1C25	DIPSTICK, ENGINE OIL (6076)	26 - 22	4F19	DRIVE TIGHTENER, FIXED SPEED FEEDER HOUSE	110 - 12
6C16	DISC (BELT TYPE), CHAFF SPREADER ( -650400)	125 - 34	6E4	DRIVE TIGHTENER, LOWER TAILINGS AUGER	125 - 72
6C18	DISC, CHAFF SPREADER (DUAL MOTOR) (650401- )	125 - 36	5H5	DRIVE TIGHTENER, PIVOT ARM, CLEANING SHOE AND CONVEYOR AUGER	121 - 52
2H15	DISPLACEMENT CONTROL VALVE, HYDROSTATIC DRIVE	50 - 36	4F17	DRIVE TIGHTENER, VARIABLE SPEED	110 - 10
2B11	DOME LIGHT, CAB	40 - 1	2G5	DRIVE WHEELS	50 - 1
4B20	DOOR AND GLASS, CAB	90 - 12	2G6	DRIVE WHEELS, HIGH FLOATATION PLANETARY FINAL DRIVE	50 - 2
3J7	DOOR AND SHEET, L.H. FRONT CORNER	80 - 48	6H4	DRIVE, COUNTERSHAFT, UNLOADING AUGER	130 - 58
4B18	DOOR LATCH, CAB	90 - 10	6H19	DRIVE, CYLINDER INTERMEDIATE, BELTS	170 - 3
5B14	DOOR, CYLINDER (CORN & GRAIN) (650401-655400)	120 - 6	6H19	DRIVE, CYLINDER, BELTS	170 - 3
5B12	DOOR, CYLINDER (FOR CORN) ( -650400)	120 - 4	1B14	DRIVE, ENGINE	20 - 8
5B16	DOOR, CYLINDER (655401- )	120 - 8	5H7	DRIVE, FAN, SEPARATOR	121 - 54
3H13	DOOR, ENGINE ACCESS, HANDRAILS, RADIATOR	80 - 6	5H13	DRIVE, FAN, SPEED CONTROL SHEAVE LINKAGE	121 - 60
6E23	DOOR, HINGED, CLEAN GRAIN LOWER AUGER	130 - 2	2G25	DRIVE, FINAL	50 - 21
6C3	DOOR, LOWER, STRAW CHOPPER	125 - 20	2I22	DRIVE, HYDROSTATIC OIL HOSES, UPPER ( -655400)	50 - 68
3I11	DOOR, REAR HOOD	80 - 28	2I20	DRIVE, HYDROSTATIC, LOWER OIL LINES (FOUR WHEEL DRIVE) (655401- )	50 - 66
3I9	DOOR, REAR HOOD ACCESS AND STOP	80 - 26	2I18	DRIVE, HYDROSTATIC, LOWER OIL LINES (TWO WHEEL DRIVE) (655401- )	50 - 64
1B10	DOOR, ROTARY SCREEN	20 - 4	2I12	DRIVE, HYDROSTATIC, LOWER OIL LINES (2&4 WHEEL DRIVE)( -655400)	50 - 58
5B10	DOOR, SEAL AND STONE TRAP, SEPARATOR/ FEEDER HOUSE	120 - 2	2I14	DRIVE, HYDROSTATIC, LOWER OIL LINES (2&4 WHEEL DRIVE)( -655400)	50 - 60
6C14	DOOR, STRAW SPREADER	125 - 32	1B8	DRIVE, ROTARY SCREEN	20 - 2
6C1	DOOR, UPPER REAR, STRAW CHOPPER	125 - 18	5H1	DRIVE, SECONDARY COUNTERSHAFT	121 - 48
3F16	DOUBLE PILOTED, AUGER SWING, SOLENOID CONTROL VALVE	70 - 60	1B12	DRIVES, ENGINE FAN	20 - 6
1B20	DRAIN, ENGINE CRANKCASE OIL	20 - 14	5F9	DRIVES, ENGINE GEARBOX TO MODULE	121 - 8
5C9	DRIVE BELT AND BEATER SHAFT	120 - 26	5F11	DRIVES, ENGINE GEARBOX TO MODULE	121 - 10
5C11	DRIVE BELT, BEATER, IDLER	120 - 28	5H19	DRIVES, STRAW CHOPPER	121 - 66
6E1	DRIVE BRACKET, TAILINGS AND LOWER TROUGH SUPPORT	125 - 69	6C8	DRIVES, STRAW SPREADER	125 - 26
6E3	DRIVE CHAIN TIGHTENER, UPPER TAILINGS	125 - 71	4H7	DRIVESHAFT, CONTOUR MASTER (660401- )	110 - 50
2G14	DRIVE CONTROL CABLE, HYDROSTATIC	50 - 10	3B17	DRUM, BRAKE	60 - 10
2H15	DRIVE DISPLACEMENT CONTROL VALVE HYDROSTATIC	50 - 36	4G16	DRUM, CHAIN AND IDLER SHAFT, FEEDER CONVEYOR	110 - 34
1C19	DRIVE GEAR, OIL PUMP (6076)	26 - 16	2D21	DUAL LEVEL MONITOR HARNESS, GRAIN TANK	40 - 60
5F7	DRIVE GEARCASE, MODULE, L.H.	121 - 6	5C13	DUAL SPEED BEATER DRIVE CONVERSION, 700/400 RPM	120 - 30
5F5	DRIVE GEARCASE, MODULE, R.H.	121 - 4	2G7	DUAL WHEELS, WIDE-SPACED	50 - 3
5C5	DRIVE IDLER, STRIPPER BEATER	120 - 22	5G23	DUAL-RANGE CYLINDER DRIVE ADJUSTING BRACKET	121 - 46
2G12	DRIVE LEVER, CABLE AND SWITCH HYDROSTATI C	50 - 8	5G13	DUAL-RANGE CYLINDER DRIVE GEARCASE	121 - 36
2H19	DRIVE MOTOR KIT, HYDROSTATIC	50 - 40	5G19	DUAL-RANGE CYLINDER DRIVE INTERMEDIATE SHAFT MOUNTING	121 - 42
2H17	DRIVE MOTOR, HYDROSTATIC	50 - 38	5G21	DUAL-RANGE CYLINDER DRIVE INTERMEDIATE SHEAVE	121 - 44
2J11	DRIVE MOTOR, HYDROSTATIC	50 - 82	5G17	DUAL-RANGE CYLINDER DRIVE TIGHTENER	121 - 40
2H11	DRIVE PISTON ASSEMBLY, HYDROSTATIC	50 - 32	5G15	DUAL-RANGE LOCKOUT ARM	121 - 38
2H5	DRIVE PUMP, HYDROSTATIC	50 - 26	4C16	DUCTS, HEATER AND AIR CONDITIONING	90 - 33
2H9	DRIVE PUMP, HYDROSTATIC	50 - 30	4H11	DUST FAN BELT, LH SIDE FEEDER HOUSE-RETROFIT INSTALLATION	110 - 54
3G5	DRIVE PUMP, REEL/BELT PICKUP	70 - 76			
2H7	DRIVE SHAFT SHIELDS, FINAL	50 - 28			



## ALPHABETICAL INDEX - CONTINUED

GRID		PAGE	GRID		PAGE			
4H13	DUST FAN, LH SIDE FEEDER HOUSE-RETROFIT INSTALLATION.....	110 - 56	5F17	ENGINE GEARCASE- SEPARATOR DRIVE WET- CLUTCH AND PUMP DRIVE SHAFT .....	121 - 16			
E								
1E5	E.C.U. (6076HH030, HH034) (ROBERT BOSCH) (LATE DESIGN) .....	26 - 58	5F21	ENGINE GEARCASE, SEPARATOR AND PUMP DRIVE .....	121 - 20			
1E3	ECU (6076HH030) (EARLY DESIGN) .....	26 - 56	5F23	ENGINE GEARCASE, SEPARATOR AND PUMP DRIVE .....	121 - 22			
1F4	ELECTRIC FUEL PUMP, WATER SEPARATOR AND FUEL FLOAT .....	30 - 4	5F15	ENGINE GEARCASE, STRAW CHOPPER, UNLOAD- ING DRIVE AND SEPARATOR DRIVE GEAR .....	121 - 14			
2F16	ELECTRICAL CONNECTOR SERVICE KIT .....	40 - 104	5F13	ENGINE GEARCASE, UNLOADING AND SEPARATOR DRIVE GEAR.....	121 - 12			
2F18	ELECTRICAL CONNECTOR SERVICE KIT .....	40 - 106	1B18	ENGINE MOUNTS AND REAR SUPPORT (655401- ) .....	20 - 12			
6H14	ELECTRICAL HARNESS, DIAL-A-MATIC.....	160 - 4	1C5	ENGINE OIL (TORQ-GARD).....	26 - 1			
2F5	ELECTRICAL SERVICE OUTLET .....	40 - 93	1D9	ENGINE OIL COOLER .....	26 - 34			
1E13	ELECTRICAL TERMINALS AND CONNECTORS, WEATHERPACK (6076) .....	26 - 66	1C25	ENGINE OIL DIPSTICK (6076) .....	26 - 22			
5G7	ELECTROMAGNETIC HEADER CLUTCH .....	121 - 30	1C25	ENGINE OIL DIPSTICK TUBE (6076) .....	26 - 22			
1E5	ELECTRONIC CONTROL UNIT (ROBERT BOSCH) (6076HH030, HH034) (LATE DESIGN) .....	26 - 58	1D9	ENGINE OIL FILTER .....	26 - 34			
2E15	ELECTRONIC CONTROL UNIT MOUNTING SUPPORT .....	40 - 78	1D6	ENGINE OIL PUMP .....	26 - 30			
1E5	ELECTRONIC FUEL INJ. PUMP (ROBERT BOSCH) (6076HH030, HH034) (LATE DESIGN) .....	26 - 58	1D8	ENGINE OIL PUMP INTAKE.....	26 - 32			
1E3	ELECTRONIC FUEL INJECTION PUMP (6076HH030) (EARLY DESIGN) .....	26 - 56	1C15	ENGINE OVERHAUL KIT(S) (ESN 500000- ).....	26 - 12			
2E17	ELECTRONICS MODULE AND CIRCUIT BOARD, CENTRAL.....	40 - 80	2D17	ENGINE PLUGGED AIR FILTER WARNING SWITCH ..	40 - 56			
5D15	ELEMENT, CHAFFER .....	120 - 58	3H17	ENGINE RAILS .....	80 - 10			
5D17	ELEMENT, CHAFFER .....	120 - 60	1E15	ENGINE REBUILD GASKET KIT (6076) .....	26 - 68			
5D19	ELEMENT, CHAFFER EXTENSION .....	120 - 62	1E22	ENGINE SPEED SENSOR .....	26 - 75			
5D23	ELEMENT, SIEVE .....	120 - 66	2B16	ENGINE TEMPERATURE GAUGE .....	40 - 6			
6F1	ELEVATOR AND CONVEYOR CHAIN, CLEAN GRAIN LOWER .....	130 - 4	4C17	ENGINE TEMPERATURE GAUGE .....	90 - 34			
6F3	ELEVATOR AND CONVEYOR CHAIN, CLEAN GRAIN LOWER .....	130 - 6	1C17	ENGINE UNDERHAUL KIT (STD BRGS) (6076).....	26 - 14			
6F7	ELEVATOR SHAFT, SPROCKET AND SHEAVE, UPPER CLEAN GRAIN.....	130 - 10	1F10	ETHER STARTING AID (655615- ) .....	30 - 10			
6F20	ELEVATOR SHIELDS, UPPER CLEAN GRAIN.....	130 - 24	1D25	ETHER STARTING FITTINGS (6076).....	26 - 53			
6H19	ELEVATOR, CLEAN GRAIN BELTS.....	170 - 3	1D24	EXHAUST MANIFOLD.....	26 - 52			
6D23	ELEVATOR, TAILINGS, HOUSING.....	125 - 66	1D24	EXHAUST MANIFOLD GASKETS.....	26 - 52			
6F5	ELEVATOR, UPPER CLEAN GRAIN .....	130 - 8	1F14	EXHAUST PIPES AND MUFFLER .....	30 - 14			
3H13	ENGINE ACCESS DOOR, HANDRAILS, AND RADIATOR DOOR.....	80 - 6	1D1	EXHAUST VALVE SHIELD (6076) .....	26 - 24			
3H23	ENGINE ACCESS PLATFORM AND STEP .....	80 - 16	1D1	EXHAUST VALVES (6076) .....	26 - 24			
2E9	ENGINE CIRCUIT BREAKERS .....	40 - 72	1C15	EXPANDED ENGINE OVERHAUL KIT(S) (ESN 500000- ).....	26 - 12			
2E6	ENGINE CIRCUIT BREAKERS ( -660400) .....	40 - 69	4F5	EXPORT ONLY, CAB POST INSTRUMENT PANEL LH .....	90 - 98			
2E7	ENGINE CIRCUIT BREAKERS (660401- ) .....	40 - 70	5D19	EXTENSION ELEMENT, CHAFFER .....	120 - 62			
3H17	ENGINE COMPARTMENT.....	80 - 10	6G3	EXTENSIONS, GRAIN TANK .....	130 - 32			
3H19	ENGINE COMPARTMENT.....	80 - 12	F					
3H21	ENGINE COMPARTMENT, AIR DUCT AND AIR DEF LECTOR.....	80 - 14	1B12	FAN AND DRIVES, ENGINE.....	20 - 6			
1B15	ENGINE COOLANT HEATER .....	20 - 9	3I19	FAN DRIVE AND MUD SHIELDS (L.H. SIDE).....	80 - 36			
1D17	ENGINE COOLANT HEATER (6076) .....	26 - 44	5H9	FAN DRIVE SPEED CONTROL LINKAGE ( -655400) .....	121 - 56			
1B20	ENGINE CRANKCASE OIL DRAIN.....	20 - 14	5H11	FAN DRIVE SPEED CONTROL LINKAGE (655401- ) .....	121 - 58			
1B14	ENGINE DRIVE .....	20 - 8	5H13	FAN DRIVE SPEED CONTROL SHEAVE LINKAGE.....	121 - 60			
1B12	ENGINE FAN AND DRIVES .....	20 - 6	5H7	FAN DRIVE, SEPARATOR .....	121 - 54			
5F9	ENGINE GEARBOX TO MODULE DRIVES.....	121 - 8	2C7	FAN, AIR CONDITIONER PRESSURIZER KIT (640401-650400) .....	40 - 22			
5F11	ENGINE GEARBOX TO MODULE DRIVES.....	121 - 10	6H20	FAN, CLEANING, BELTS .....	170 - 4			
5F19	ENGINE GEARCASE.....	121 - 18	4H13	FAN, DUST, LH SIDE FEEDER HOUSE-RETROFIT INSTALLATION.....	110 - 56			
1B19	ENGINE GEARCASE COUPLING WITH HUB.....	20 - 13	4E8	FAN, PRESSURIZER AND AIR CONDITIONING/ HEATER .....	90 - 76			
3H3	ENGINE GEARCASE OIL FILTER ASSEMBLY .....	70 - 98	5C24	FANS AND SHROUDS, CLEANING .....	120 - 42			
3F5	ENGINE GEARCASE PRESSURE REGULATOR .....	70 - 48	5D1	FANS AND SHROUDS, CLEANING .....	120 - 44			
3H5	ENGINE GEARCASE PRESSURE REGULATOR, SOLENOID CONTROL VALVE.....	70 - 100	5B17	FC:5652 .....	120 - 9			
			4G20	FEED PLATE LATCH HANDLE .....	110 - 38			
			6H18	FEEDER CONVEYOR BELTS.....	170 - 2			

## ALPHABETICAL INDEX - CONTINUED

GRID	PAGE	GRID	PAGE		
4G18	FEEDER CONVEYOR DRIVE CHAIN, TIGHTENER AND GUIDES.....	110-36	6D9	FITTINGS AND LINES, CHAFF SPREADER.....	125-52
4H9	FEEDER CONVEYOR DRIVE CHAIN, TIGHTENER AND GUIDES-RETROFIT INATALLATION.....	110-52	1C7	FITTINGS, CYLINDER BLOCK (6076).....	26-4
4G16	FEEDER CONVEYOR IDLER SHAFT, DRUM AND CHAIN.....	110-34	1D25	FITTINGS, ETHER STARTING (6076).....	26-53
2F10	FEEDER HOUSE BACKSHAFT SPEED SENSOR.....	40-98	1F2	FITTINGS, FUEL TANK.....	30-2
6H20	FEEDER HOUSE BELTS.....	170-4	1F6	FITTINGS, TANK FUEL LINES.....	30-6
4F23	FEEDER HOUSE DRIVE SHIELDS - CONTOUR MASTER (660401-660432).....	110-16	3G19	FITTINGS, TILT CYLINDER - CONTOUR MASTER (660401- ).....	70-90
4G1	FEEDER HOUSE DRIVE SHIELDS - CONTOUR MASTER (661186- ).....	110-18	3C17	FIXED REAR AXLE (GRAIN) (655542- ).....	60-34
4F21	FEEDER HOUSE DRIVE SHIELDS AND SAFETY STOP.....	110-14	3C21	FIXED REAR AXLE STEERING TIE RODS GRAIN (655542- ).....	60-38
5H15	FEEDER HOUSE DRIVE TIGHTENER.....	121-62	3C20	FIXED REAR AXLE, 4-WHEEL DRIVE, STEERING TIE RODS - GRAIN (655542- ).....	60-37
4F19	FEEDER HOUSE DRIVE TIGHTENER (FIXED SPEED).....	110-12	4F19	FIXED SPEED FEEDER HOUSE DRIVE TIGHTENER..	110-12
4H11	FEEDER HOUSE DUST FAN BELT, LH SIDE - RETROFIT INSTALLATION.....	110-54	3H6	FLAT O-RING KIT, HYDRAULIC.....	70-101
4H13	FEEDER HOUSE DUST FAN, LH SIDE - RETROFIT INSTALLATION.....	110-56	1F4	FLOAT, FUEL.....	30-4
4G14	FEEDER HOUSE FLOOR.....	110-32	4B10	FLOOR MAT AND PANELS, CAB.....	90-2
4G3	FEEDER HOUSE FRAME.....	110-20	4G14	FLOOR, FEEDER HOUSE.....	110-32
4G7	FEEDER HOUSE FRAME, TILT BEAM & CLOSURE PLATES, CONTOUR MASTER (660401- ).....	110-24	2J9	FLOW CONTROL VALVE TO CAM LOBE MOTORS, LINES AND HOSES.....	50-80
4H5	FEEDER HOUSE FRONT DRIVE SHAFT, SHEAVE AND MOUNTINGS (FIXED SPEED WITH.....	110-48	3D11	FLOW CONTROL VALVE, REEL DRIVE.....	70-6
4H1	FEEDER HOUSE RETURN FLOOR.....	110-44	6D7	FLOW CONTROL VALVE, REEL DRIVE.....	125-50
4C21	FEEDER HOUSE REVERSER FOOT CONTROL.....	90-38	1C22	FLYWHEEL (6076).....	26-19
4F13	FEEDER HOUSE REVERSER FOOT CONTROL.....	110-6	4B12	FOAM, SEALS, SOUND DEADENING, CAB.....	90-4
4G5	FEEDER HOUSE SHELL - CONTOUR MASTER (660401- ).....	110-22	1C24	FOLLOWER, CAMSHAFT.....	26-21
4G22	FEEDER HOUSE SLIP CLUTCH.....	110-40	1D3	FOLLOWER, CAMSHAFT.....	26-26
4G12	FEEDER HOUSE UPPER SHAFT.....	110-30	4F13	FOOT CONTROL, FEEDER HOUSE REVERSER.....	110-6
3D15	FEEDER HOUSE VARIABLE DRIVE HYDRAULIC HOSE.....	70-10	4C21	FOOT CONTROL, REVERSER, FEEDER HOUSE.....	90-38
4G5	FEEDER HOUSE WEAR PLATES - CONTOUR MASTER (660401- ).....	110-22	4D6	FORE-AND-AFT, SEAT ADJUST.....	90-48
4G24	FEEDER HOUSE, UPPER COUNTERSHAFT VARIABLE DRIVE.....	110-42	2G10	FORKS, SHIFTER.....	50-6
3E1	FEEDERHOUSE FITTINGS, HYDRAULIC - EXPORT....	70-20	2J17	FOUR WHEEL DRIVE CASE DRAIN HYDRAULIC LINES.....	50-88
3E1	FEEDERHOUSE PLUMBING- EXPORT.....	70-20	2J5	FOUR WHEEL DRIVE HYDRAULIC LINES AND HOSES, L.H. ( -655400).....	50-76
2B14	FIELD LIGHT SWITCH, AUX, OPTIONAL.....	40-4	2J7	FOUR WHEEL DRIVE HYDRAULIC LINES AND HOS ES, L.H. (655401- ).....	50-78
2B20	FIELD LIGHTING, AUXILIARY.....	40-10	2J9	FOUR WHEEL DRIVE LINES AND HOSES.....	50-80
2F9	FIELD LIGHTS.....	40-97	3C13	FOUR-WHEEL DRIVE.....	60-30
1E19	FIELD WINDING COIL (12V F4).....	26-72	5E14	FRAME AND COVERS, MODULE.....	120-82
5E18	FILLER PLATE, MODULE GRATE ASSEMBLY AND FINGER BAR.....	120-86	4B22	FRAME AND SUPPORT, CAB.....	90-14
3D13	FILTER ASSEMBLY, MAIN, HYDRAULIC.....	70-8	5D13	FRAME ARMS, PRECLEANER CHAFFER.....	120-56
1D9	FILTER, ENGINE OIL.....	26-34	5D21	FRAME, CHAFFER.....	120-64
1E11	FILTER, FUEL (6076HH030, HH034).....	26-64	4G3	FRAME, FEEDER HOUSE.....	110-20
3H3	FILTER, OIL, ENGINE GEARCASE, ASSEMBLY.....	70-98	4G7	FRAME, FEEDER HOUSE, CONTOUR MASTER (660401- ).....	110-24
1D12	FILTER, WEEP HOLE (WATER PUMP).....	26-38	3H11	FRAME, SEPARATOR.....	80-4
4E6	FILTERS, AIR CONDITIONING AND HEATER HOUSING.....	90-74	6C20	FRAME, SHIELDS AND HANDLES, CHAFF SPREADER (BELT TYPE) ( -650400).....	125-38
2G25	FINAL DRIVE.....	50-21	5E1	FRAME, SIEVE.....	120-68
2H2	FINAL DRIVE AXLE, GEAR AND BEARINGS.....	50-23	6C12	FRAME, STRAW SPREADER.....	125-30
2H1	FINAL DRIVE HOUSING AND BEARING CAP.....	50-22	2B19	FRONT AND REAR TURN AND TAIL LIGHTS.....	40-9
2H3	FINAL DRIVE PINION, SHAFTS AND BEARINGS.....	50-24	2G8	FRONT AXLE.....	50-4
2H7	FINAL DRIVE SHAFT SHIELDS.....	50-28	3J7	FRONT CORNER SHEET AND DOOR, L.H.....	80-48
6B18	FINE CUT ROTOR STRAW CHOPPER (PADDLED NARROW (670401- ).....	125-10	3J3	FRONT CORNER SHEET, R.H.....	80-44
6B16	FINE CUT ROTOR STRAW CHOPPER (STRAIGHT NARROW (670401- ).....	125-8	1C23	FRONT OIL SEAL (6076).....	26-20
5E18	FINGER BAR, FILLER PLATE AND MODULE GRATE ASSEMBLY.....	120-86	4F15	FRONT SHAFT WITH REVERSER (VARIABLE) 9400, 9500 COMBINES.....	110-8
6B10	FINS, SUPPORTS AND DECK, STRAW CHOPPER.....	125-2	3C5	FRONT STEERING HOSES AND LINES.....	60-22
			4F9	FRONT VARIABLE DRIVE SHEAVE AND MOUNTINGS.....	110-2
			1D15	FRONT WATER MANIFOLD.....	26-42
			6J13	FRONT WHEEL DECALS.....	170-46
			2C21	FRONT, L.H. MAIN WIRING HARNESS.....	40-36
			1E11	FUEL CHECK VALVE (6076HH030, HH034).....	26-64
			1F11	FUEL COOLER.....	30-11
			1E11	FUEL FILTER (6076HH030, HH034).....	26-64
			1E11	FUEL FILTER LINES (6076HH030, HH034).....	26-64



## ALPHABETICAL INDEX - CONTINUED

GRID		PAGE	GRID		PAGE
2D13	HARNESS, UPPER, ENGINE, 6076 .....	40 - 52	6G9	HORIZONTAL UNLOADING AUGER SWIVEL .....	130 - 38
1E3	HARNESS, WIRING (6076HH030) (EARLY DESIGN) .....	26 - 56	2C19	HORN .....	40 - 34
1E5	HARNESS, WIRING (6076HH030, HH034) (ROBERT BOSCH)(LATE DESIGN) .....	26 - 58	3F3	HOSE, CHARGE PRESSURE .....	70 - 46
2C5	HARNESS, WIRING, A/C, HEATER AND AIRSEAT (660401- ) .....	40 - 20	3D15	HOSE, HYDRAULIC, VARIABLE DRIVE, FEEDER HOUSE .....	70 - 10
2C19	HARNESS, WIRING, MAIN, L.H. FRONT .....	40 - 34	3E19	HOSE, LINE AND MOUNTING, ONE-HALF GALLON DUAL ACCUMULATOR ( -655400) .....	70 - 38
2D3	HARNESS, WIRING, R.H. MAIN .....	40 - 42	6D15	HOSES AND LINES, CHAFF SPREADER (DUAL MOTOR) (650401- ) .....	125 - 58
2C1	HARNESS, WIRING, STEERING COLUMN (646237-) .....	40 - 16	2J9	HOSES AND LINES, FOUR WHEEL DRIVE .....	50 - 80
2B16	HARVESTRAK .....	40 - 6	2J5	HOSES AND LINES, FOUR WHEEL DRIVE HYDRAULIC, L.H. ( -655400) .....	50 - 76
4C17	HARVESTRAK .....	90 - 34	2J7	HOSES AND LINES, FOUR WHEEL DRIVE HYDRAU LIC, L.H. (655401- ) .....	50 - 78
2D9	HARVESTRAK MONITOR SYSTEM .....	40 - 48	3E9	HOSES AND LINES, HEADER LIFT .....	70 - 28
2D9	HARVESTRAK WIRING HARNESS .....	40 - 48	3F9	HOSES AND LINES, HYDRAULIC, CYLINDER SPEED .....	70 - 52
1D1	HEAD BOLT KIT (6076) .....	26 - 24	3E5	HOSES AND LINES, HYDRAULIC, REEL FORE- AND-AFT, FRONT .....	70 - 24
1D1	HEAD, CYLINDER (6076) .....	26 - 24	3D19	HOSES AND LINES, HYDRAULIC, REEL PUMP .....	70 - 14
6H20	HEADER BELTS .....	170 - 4	3D21	HOSES AND LINES, HYDRAULIC, REEL PUMP .....	70 - 16
5G7	HEADER ELECTROMAGNETIC CLUTCH .....	121 - 30	2J1	HOSES AND LINES, OIL COOLER, HYDROSTATIC ( -665400) .....	50 - 72
4F5	HEADER HEIGHT CONTROL GAUGE ON LH CAB POST (EXPORT ONLY) .....	90 - 98	2J3	HOSES AND LINES, OIL COOLER, HYDROSTATIC (665401- ) .....	50 - 74
6H13	HEADER HEIGHT CONTROL VALVE .....	160 - 3	3G21	HOSES AND LINES, OIL COOLER, WET CLUTCH ( -665400) .....	70 - 92
6H12	HEADER HEIGHT CONTROL, DIAL-A-MATIC HYDRAULIC LINE AND VALVE BLOCK .....	160 - 2	3G23	HOSES AND LINES, OIL COOLER, WET CLUTCH (665401- ) .....	70 - 94
3E15	HEADER HEIGHT CONTROL, DIAL-A-MATIC, VALVE BLOCK SOLENOID .....	70 - 34	2I16	HOSES AND LINES, OIL, HYDROSTATIC DRIVE, LOWER (TWO WHEEL DRIVE)(655401- ) .....	50 - 62
6H14	HEADER HEIGHT CONTROL, ELECTRIC HARNESS, DIAL-A-MATIC .....	160 - 4	3D17	HOSES AND LINES, REEL DRIVE, HYD., FRONT .....	70 - 12
3D24	HEADER LIFT HYDRAULIC CYLINDER .....	70 - 19	3D9	HOSES AND LINES, REEL DRIVE, HYDRAULIC, L.H. SIDE ( -655400) .....	70 - 4
3E9	HEADER LIFT HYDRAULIC LINES AND HOSES .....	70 - 28	3D10	HOSES AND LINES, REEL DRIVE, HYDRAULIC, L.H. SIDE (655401- ) .....	70 - 5
3F12	HEADER LIFT MODULE, SOLENOID CONTROL VALVE .....	70 - 56	3E3	HOSES AND LINES, REEL LIFT .....	70 - 22
2E23	HEADER LIGHTS, (EXPORT ONLY) .....	40 - 86	3C5	HOSES AND LINES, STEERING, FRONT .....	60 - 22
1A9	HEADERS .....	10 - 8	3C11	HOSES AND LINES, STEERING, REAR .....	60 - 28
2E25	HEADLIGHTS UNDER CAB (EXPORT ONLY) .....	40 - 88	3G7	HOSES AND LINES, UNLOADING AUGER SWING HYDRAULIC CYLINDER .....	70 - 78
1F11	HEAT EXCHANGER, FUEL .....	30 - 11	3E13	HOSES AND LINES, UPPER RETURN, HYDRAULIC RESERVOIR .....	70 - 32
2C9	HEATER AND AIR CONDITIONER SWITCH .....	40 - 24	3G9	HOSES, GRAIN TANK UNLOADING DRIVE CYLINDER .....	70 - 80
4C16	HEATER AND AIR CONDITIONING DUCTS .....	90 - 33	3E11	HOSES, HYDRAULIC, CONTOUR MASTER (L.H.) (OPTIONAL) (660401- ) .....	70 - 30
4E6	HEATER HOUSING AND AIR CONDITIONING FILTERS .....	90 - 74	6D13	HOSES, LINES AND MOTOR, CHAFF SPREADER ( -650400) .....	125 - 56
4F1	HEATER SYSTEM .....	90 - 94	6E18	HOSES, LUBE, L. H. .....	125 - 86
2C3	HEATER WIRING HARNESS ( -660400) .....	40 - 18	6E16	HOSES, LUBE, R. H. .....	125 - 84
2C5	HEATER WIRING HARNESS (660401- ) .....	40 - 20	2I20	HOSES, OIL, HYDROSTATIC DRIVE, LOWER (FOUR WHEEL DRIVE) (655401- ) .....	50 - 66
1B15	HEATER, ENGINE COOLANT .....	20 - 9	2I18	HOSES, OIL, HYDROSTATIC DRIVE, LOWER (TWO WHEEL DRIVE) (655401- ) .....	50 - 64
1D17	HEATER, ENGINE COOLANT (6076) .....	26 - 44	2I14	HOSES, OIL, HYDROSTATIC DRIVE, LOWER (2&4 WHEEL DRIVE)( -655400) .....	50 - 60
4D8	HEIGHT ADJUSTER, CAB SEAT .....	90 - 50	2I12	HOSES, OIL, HYDROSTATIC DRIVE, LOWER (2&4 WHEEL DRIVE)( -655400) .....	50 - 58
2G6	HIGH FLOATATION DRIVE WHEELS PLANETARY FINAL DRIVE .....	50 - 2	2I22	HOSES, OIL, HYDROSTATIC DRIVE, UPPER ( -655400) .....	50 - 68
2D19	HOLDDOWN, BATTERY .....	40 - 58	3F7	HOSES, PRESSURE, HYDRAULIC .....	70 - 50
4E1	HOLDER, CUP (660401- ) .....	90 - 68	1F16	HOSES, RADIATOR .....	30 - 16
3I5	HOOD, REAR .....	80 - 22	3B23	HOSES, STEERING, UPPER .....	60 - 16
3I9	HOOD, REAR, ACCESS DOOR AND STOP .....	80 - 26	3G19	HOSES, TILT CYLINDER - CONTOUR MASTER (660401- ) .....	70 - 90
6G22	HORIZONTAL UNLOADING AUGER (17- AND 20-FT.) .....	130 - 50			
6G15	HORIZONTAL UNLOADING AUGER DRIVE GEARCASE .....	130 - 44			
6G20	HORIZONTAL UNLOADING AUGER HOUSING (EXPORT) (17 AND 20 FT.) .....	130 - 49A			
6G16	HORIZONTAL UNLOADING AUGER HOUSING (14- AND 17-FT.) .....	130 - 46			
6G18	HORIZONTAL UNLOADING AUGER HOUSING (17- AND 20-FT.) .....	130 - 48			
6G13	HORIZONTAL UNLOADING AUGER HUB SUPPORT AND SWITCH .....	130 - 42			