

499 AND 699 COTTON PICKERS



JOHN DEERE

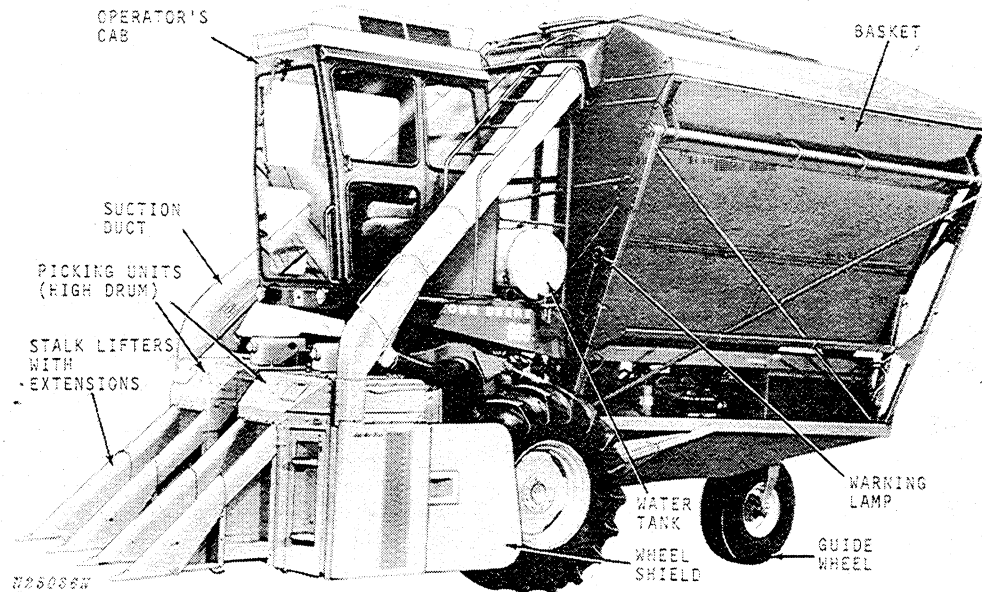
PARTS CATALOG 499 AND 699 COTTON PICKERS

PC1122 (03AUG79) English

DES MOINES WORKS
PC1122 (03AUG79)

LITHO IN THE U.S.A. (REVISED)
ENGLISH





*John Deere 699 Cotton Picker
Manufactured (1968-1973)*

(Specifications and design are subject to change without notice.)

COMPLETE GOODS ITEMS

Complete goods items are listed in bold face type. Order separately. Do not include them on replacement part orders.

BOLT AND CAP SCREW STRENGTH IDENTIFICATION

Unless otherwise noted, high strength SAE 5 (3 radial-line head markings) bolts and cap screws are used throughout this catalog.

EXPLANATION OF CHANGE INDICATOR LINES

New and revised information is identified by vertical lines marked on left-hand margins of pages. These lines indicate changes affecting the ordering of parts.

SI UNITS OF MEASURE

Because John Deere sells its products world-wide, U.S. units of measure are shown with their respective Metric equivalents throughout this parts catalog. These equivalents are the SI (International System) Units of Measure.

ENGINES

For parts information on the 217 Power Unit used on the 499 Cotton Picker refer to PC-568 Parts Catalog.

For parts information on the 219 Power Unit used on the 499 Cotton Picker refer to PC-1172 Parts Catalog or MPC-1172.

For parts information on the 303 Power Unit used on the 699 Cotton Picker refer to PC-956 Parts Catalog or MPC-956.

For parts information on the 329 Power Unit used on the 499 and 699 Cotton Picker refer to PC-1159 Parts Catalog or MPC-1159.

SECTIONAL INDEX

GENERAL INFORMATION	5
MAIN FRAME AND CHASSIS	10
TRANSMISSION AND DRIVE TRAIN	15
FINAL DRIVE AND BRAKES	20
HYDROSTATIC MOTOR AND PUMP	25
HYDRAULICS	30
PLATFORM AND CONTROLS	35
STEERING	40
WATER SYSTEM	45
ELECTRICAL	50
AIR SYSTEM AND DUCTS	55
STALK LIFTERS AND HEIGHT SENSING LINKAGE	60
BASKET	65
PICKING UNIT DRIVE	70
PICKING UNIT	75
CAB	80
AIR CONDITIONING	85
NUMERICAL INDEX	90

**Thanks very much for your reading,
Want to get more information,
Please click here, Then get the complete
manual**

JustClickHere 

NOTE:

**If there is no response to click on the link above,
please download the PDF document first, and then
click on it.**

**Have any questions please write to me:
admin@servicemanualperfect.com**

ALPHABETICAL INDEX

GRID		PAGE	GRID		PAGE
A					
D13	ADJUSTABLE GUIDE WHEEL FRAME	40-3	H4	CAM, PICKER BAR	75-23
I15	AIR CONDITIONER COMPRESSOR	85-4	H5	CAM, PICKER BAR, SHAFT AND HEAD	75-24
I16	AIR CONDITIONER COMPRESSOR MOUNTING	85-5	B14	CAP, END, HYDROSTATIC PUMP	25-3
I12	AIR CONDITIONER CONDENSER	85-1	A25	CASE, AUXILIARY	15-6
I13	AIR CONDITIONER CONDENSER COVER AND FAN	85-2	A23	CASE, TRANSMISSION AND DIFFERENTIAL	15-4
I14	AIR CONDITIONER EVAPORATOR AND TUBES	85-3	A24	CASE, TRANSMISSION AND DIFFERENTIAL	15-5
I17	AIR CONDITIONING COMPRESSOR	85-6	B15	CHARGE PUMP (HYDROSTATIC DRIVE)	25-4
G15	ANGLES, 12-BAR DRUM PICKING UNIT BOTTOM	75-9	E11	CIRCUIT BREAKER	50-6
A17	ARMS, PICKING UNIT LIFT	10-8	D2	CLUTCH PEDAL	35-13
A18	ARMS, PICKING UNIT LIFT	10-9	G13	CLUTCH, DRUM SLIP	75-7
B3	AUXILIARY UNIT DRIVE DRIVE GEARS	15-9	I15	COMPRESSOR, AIR CONDITIONER	85-4
B1	AUXILIARY UNIT DRIVE GEARS	15-7	I13	CONDENSER COVER, AIR CONDITIONER	85-2
B8	AXLE, MAIN DRIVE	20-3	I12	CONDENSER, AIR CONDITIONER	85-1
B			G8	CONNECTOR BRACKETS, PICKING UNIT	75-2
G20	BAFFLES, 12-BAR DRUM PICKING UNIT	75-14	G9	CONNECTOR BRACKETS, PICKING UNIT	75-3
G18	BAFFLES, 12-BAR DRUM PICKING UNIT (499)	75-12	C16	CONSOLE, PLATFORM	35-2
A15	BARS, STABILIZER	10-6	C16	CONSOLE, PLATFORM	35-2
A16	BARS, STABILIZER	10-7	C24	CONTROL PUMP, POWER STEERING	35-10
F17	BASKET HEAT SHIELD	65-9	C25	CONTROL VALVE	35-11
H23	BASKET LADDER, CAB	80-4	B16	CONTROL VALVE (HYDROSTATIC DRIVE)	25-5
F17	BASKET LID EXTENSION (699)	65-9	C22	CONTROL, ADJUSTMENT	35-8
C7	BASKET LIFT CYLINDER	30-9	B22	COOLER, OIL (HYDROSTATIC DRIVE) (699)	25-11
C4	BASKET LIFT HYDRAULIC CYLINDER	30-6	I9	CORE, HEATER	80-15
C8	BASKET LIFT TUBES AND HOSES	30-10	F23	COUNTERSHAFT, UNIT DRIVE AND SHEAVES	70-1
F9	BASKET SUPPORTS (499)	65-1	F24	COUNTERSHAFT, UNIT DRIVE AND SHEAVES	70-2
F10	BASKET SUPPORTS (499)	65-2	B6	COUPLING, DRIVE SHAFT	20-1
F11	BASKET SUPPORTS (699)	65-3	A20	COUPLING, HYDROSTATIC MOTOR DRIVE	15-1
F14	BASKET, COTTON LEFT HAND SIDE	65-6	B13	COVER, HYDROSTATIC PUMP	25-2
F15	BASKET, COTTON LEFT HAND SIDE	65-7	A23	COVER, TRANSMISSION AND DIFFERENTIAL	15-4
F16	BASKET, COTTON LEFT HAND SIDE	65-8	A24	COVER, TRANSMISSION AND DIFFERENTIAL	15-5
F13	BASKET, COTTON RIGHT HAND SIDE (699)	65-5	C21	CUSHION, SEAT	35-7
F12	BASKET, COTTON RIGHT HAND SIDE AND FLOOR	65-4	C7	CYLINDER, BASKET LIFT	30-9
B25	BELT, HYDRAULIC PUMP	30-2	C4	CYLINDER, HYDRAULIC FOR COTTON BASKET	30-6
B25	BELT, HYDRAULIC PUMP	30-2	A16	CYLINDER, STABILIZER	10-7
C1	BELT, HYDRAULIC PUMP	30-3	C3	CYLINDER, UNIT LIFT	30-5
G4	BEVEL GEARS	70-7	D		
G5	BEVEL GEARS	70-8	G2	DECAL SETS	70-5
I10	BLADE, WIPER	80-16	A23	DIFFERENTIAL CASE	15-4
B14	BLOCK, CYLINDER, HYDROSTATIC PUMP	25-3	B9	DISK, BRAKE	20-4
I4	BLOWER CHAMBER	80-10	C13	DIVIDER, LOWER FLOW	30-15
I2	BLOWER COVER AND FILTER, CAB	80-8	C13	DIVIDER, UPPER FLOW	30-15
I5	BLOWER MOTOR AND HOUSING	80-11	H12	DOFFER	75-31
I3	BLOWER MOTOR AND HOUSING, CAB	80-9	G14	DOFFER DRIVE TIGHTENER SPROCKET	75-8
I3	BLOWER PANEL AND DEFLECTORS, CAB	80-9	I3	DOME LIGHT	80-9
G23	BOTTOM ANGLES, 16-BAR DRUM PICKING UNIT	75-17	I6	DOME LIGHT	80-12
I7	BOX, FILTER	80-13	H22	DOOR, CAB	80-3
C20	BOX, SEAT ASSEMBLY	35-6	E21	DOOR, 12-BAR COTTON AND DUCTS	55-8
A11	BRACKET, HYDRAULIC LINES	10-2	E22	DOOR, 16-BAR DRUM COTTON AND DUCTS	55-9
G8	BRACKETS, PICKING UNIT CONNECTOR	75-2	I12	DRIER, AIR CONDITIONER	85-1
G9	BRACKETS, PICKING UNIT CONNECTOR (499)	75-3	G13	DRIVE GEARS, UPPER HOUSING, SPROCKETS	75-7
D2	BRAKE LINKAGE	35-13	H9	DRIVE SHAFT, PICKER BAR SPINDLE	75-28
D2	BRAKE PEDAL	35-13	H4	DRUM, PICKER BAR	75-23
B9	BRAKES	20-4	H6	DRUM, PICKER BAR	75-25
E11	BREAKER, CIRCUIT	50-6	H7	DRUM, PICKER BAR	75-26
C			C17	DUCT SUPPORT	35-3
I7	CAB FILTER	80-13	E21	DUCT, 12-BAR	55-8
H20	CAB FRAME	80-1	E22	DUCT, 16-BAR	55-9
I8	CAB HEATER AND HOSES	80-14	E		
H8	CAM FOLLOWER	75-27	I15	ELECTROMAGNETIC CLUTCH	85-4
			B22	ELEMENT, HYDROSTATIC OIL FILTER	25-11
			A11	ENGINE HOOD, FRONT	10-2

ALPHABETICAL INDEX - CONTINUED

GRID		PAGE	GRID		PAGE
I17	ENGINE WIRING DIAGRAM	85-6	I9	HEATER VALVE	80-15
I14	EVAPORATOR, AIR CONDITIONER	85-3	C11	HEIGHT SENSING HYDRAULIC LINES	30-13
F17	EXTENSION, BASKET LID (699)	65-9	C12	HEIGHT SENSING HYDRAULIC LINES	30-14
F			F4	HEIGHT SENSING SHOE, INNER	60-6
E17	FAN HOUSING	55-4	F5	HEIGHT SENSING SHOE, OUTER	60-7
E18	FAN HOUSING	55-5	C13	HEIGHT SENSING UNIT VALVE	30-15
E15	FAN IDLER SHEAVE	55-2	F21	HI LIFT DUMP LINKAGE	65-13
E16	FAN IDLER SHEAVE	55-3	A11	HOOD, ENGINE FRONT	10-2
E20	FAN ROTOR	55-7	C8	HOSES AND TUBES FOR BASKET LIFT	30-10
E19	FAN SHAFT	55-6	C7	HOSES AND TUBES, HYDRAULIC, LIFT	30-9
E20	FAN SHAFT	55-7	E17	HOUSING, FAN	55-4
E14	FAN SHIFT LEVER	55-1	E18	HOUSING, FAN	55-5
I13	FAN, AIR CONDITIONER CONDENSER	85-2	B6	HOUSING, FINAL DRIVE	20-1
I2	FAN, DEFROSTER	80-8	B12	HOUSING, HYDROSTATIC PUMP	25-1
I7	FILTER AND FILTER LID	80-13	G7	HOUSING, PICKING UNIT	75-1
I7	FILTER BOX	80-13	G3	HOUSING, PICKING UNIT DRIVE	70-6
E2	FILTER FROM PLATFORM TO UNITS	45-9	G10	HOUSING, PICKING UNIT UPPER	75-4
B22	FILTER, OIL (HYDROSTATIC DRIVE) (699)	25-11	G11	HOUSING, PICKING UNIT UPPER	75-5
B8	FINAL DRIVE GEAR AND AXLE	20-3	C22	HOUSING, POWER STEERING PUMP	35-8
B6	FINAL DRIVE HOUSING AND DRIVE SHAFT	20-1	C23	HOUSING, POWER STEERING PUMP	35-9
H25	FLOOR MAT, CAB	80-6	D14	HOUSING, REAR AXLE AND BRACKET, PIVOT	40-4
H25	FLOOR MAT, CAB	80-6	H10	HOUSING, UPPER DOFFER ADJUSTMENT	75-29
C18	FLOOR, PLATFORM	35-4	H11	HOUSING, UPPER DOFFER ADJUSTMENT	75-30
C19	FLOOR, PLATFORM	35-5	C2	HYDRAULIC OIL RESERVOIR	30-4
C13	FLOW DIVIDER	30-15	B24	HYDRAULIC PUMP	30-1
C13	FLOW DIVIDER	30-15	B25	HYDRAULIC PUMP MOUNTING	30-2
A23	FORKS, TRANSMISSION AND DIFFERENTIAL	15-4	B25	HYDRAULIC PUMP MOUNTING	30-2
A24	FORKS, TRANSMISSION AND DIFFERENTIAL	15-5	C1	HYDRAULIC PUMP MOUNTING	30-3
D13	FRAME, ADJUSTABLE GUIDE WHEEL	40-3	D1	HYDROSTATIC DRIVE SPEED LEVER	35-12
F18	FRAME, BASKET LID	65-10	A21	HYDROSTATIC DRIVE UNIVERSAL JOINT	15-2
H20	FRAME, CAB	80-1	B17	HYDROSTATIC MOTOR	25-6
A10	FRAME, MAIN	10-1	A20	HYDROSTATIC MOTOR DRIVE	15-1
C15	FRAME, PLATFORM	35-1	B22	HYDROSTATIC OIL COOLER	25-11
G16	FRAMES BOTTOM AND STIFFENER	75-10	B22	HYDROSTATIC OIL FILTER	25-11
G22	FRONT HOOD, 12-BAR DRUM PICKING UNIT	75-16	B21	HYDROSTATIC OIL RESERVOIR	25-10
G			I		
B19	GAUGE, OIL TEMPERATURE	25-8	G12	IDLER SHAFT GEAR	75-6
E6	GAUGES, INSTRUMENT	50-1	E16	IDLER, FAN AND LINKAGE	55-3
G12	GEAR ASSEMBLY, IDLER SHAFT (UPPER)	75-6	E6	INSTRUMENT PANEL	50-1
B8	GEAR, FINAL DRIVE	20-3	I6	INSTRUMENT PANEL AND SWITCHES, CAB	80-12
A22	GEARS AND SHAFT, TRANSMISSION	15-3	J		
B1	GEARS, AUXILIARY UNIT DRIVE (STANDARD)	15-7	G1	JOINT, UNIVERSAL	70-4
B3	GEARS, AUXILIARY UNIT DRIVE (699)	15-9	L		
B7	GEARS, DIFFERENTIAL	20-2	C17	LADDER	35-3
B2	GEARS, TRANSMISSION INPUT (STANDARD)	15-8	H23	LADDER, BASKET, CAB	80-4
B4	GEARS, TRANSMISSION INPUT (699)	15-10	E11	LAMP, HEAD	50-6
G17	GRID BARS, 12-BAR DRUM PICKING UNIT	75-11	E12	LAMP, STEERING WHEEL INDICATOR	50-7
G24	GRID BARS, 16-BAR PICKING UNIT	75-18	E10	LAMP, TAIL	50-5
F2	GRID FINGERS, PICKING UNIT	60-4	E10	LAMP, WARNING	50-5
H			D1	LEVER, HYDROSTATIC DRIVE SPEED (699)	35-12
F20	HAND RAIL, LID AND LADDER	65-12	C19	LEVER, UNIT STOP ADJUSTMENT AND LINKAGE	35-5
C17	HANDRAIL	35-3	E14	LEVERS, FAN AND UNIT SHIFT AND LINKAGE	55-1
E9	HARNESS, WIRING	50-4	D6	LEVERS, SHIFTING (STANDARD TRANSMISSION)	35-17
E7	HARNESS, WIRING (499 WITH 217 ENGINE)	50-2	D8	LEVERS, SHIFTING (699)	35-19
E8	HARNESS, WIRING (699)	50-3	D4	LEVERS, UNIT LIFT AND LINKAGE	35-15
E11	HEAD LAMP	50-6	F20	LID HANDRAIL	65-12
I8	HEATER AND HOSES, CAB (699)	80-14	F2	LIFTER, STALK EXTENSION AND GRATES	60-4
I9	HEATER CORE AND HOSES	80-15	F3	LIFTER, STALK EXTENSIONS AND GRATES	60-5

ALPHABETICAL INDEX - CONTINUED

GRID		PAGE	GRID		PAGE
E24	LIFTERS, STALK	60-1	H8	PICKER BAR	75-27
E25	LIFTERS, STALK WITH EXTENSIONS	60-2	H15	PICKER BAR DRUM LUBE LINES AND SHIELDS	75-34
F1	LIFTERS, STALK WITHOUT EXTENSIONS	60-3	H9	PICKER BAR SPINDLE DRIVE SHAFT	75-28
E1	LINE, PLATFORM WATER, VALVES, AND BOX	45-8	H4	PICKER DRUM AND CAM	75-23
C12	LINES, HEIGHT SENSING HYDRAULIC	30-14	G4	PICKING UNIT BEVEL GEARS AND SHAFT	70-7
C11	LINES, HEIGHT SENSING HYDRUALIC	30-13	G5	PICKING UNIT BEVEL GEARS AND SHAFT	70-8
B20	LINES, OIL (LOWER) (699)	25-9	F25	PICKING UNIT DRIVE SHAFT	70-3
B19	LINES, OIL (UPPER) (699)	25-8	G1	PICKING UNIT DRIVE SHAFT	70-4
D23	LINES, WATER FROM FILTER TO UNITS	45-5	G7	PICKING UNIT HOUSINING	75-1
D24	LINES, WATER FROM FILTER TO UNITS	45-6	G1	PICKING UNIT, SHIELD, DRIVE SHAFT	70-4
E2	LINES, WATER FROM PLATFORM TO UNITS	45-9	A13	PLANT SHIELD	10-4
D25	LINES, WATER FROM TANK TO PUMP (699)	45-7	H2	PLATES, FRONT DRUM PRESSURE	75-21
E3	LINES, WATER TO MOISTENERS	45-10	H3	PLATES, REAR DRUM PRESSURE	75-22
D8	LINKAGE (HYDROSTATIC DRIVE) (699)	35-19	C15	PLATFORM FRAME	35-1
D6	LINKAGE (STANDARD TRANSMISSION)	35-17	C15	PLATFORM TURNBUCKLE	35-1
G14	LINKAGE (UPPER HOUSING DRIVE)	75-8	G18	POST, 12-BAR DRUM PICKING UNIT, GRATE	75-12
F21	LINKAGE, HI LIFT DUMP	65-13	G20	POSTS, 12-BAR DRUM PICKING UNIT	75-14
F4	LINKAGE, PICKING UNIT INNER SENSING	60-6	C9	POWER STEERING HYDRAULIC TUBES	30-11
F6	LINKAGE, PLATFORM HEIGHT SENSING	60-8	H2	PRESSURE PLATES, FRONT DRUM	75-21
F7	LINKAGE, PLATFORM HEIGHT SENSING	60-9	H3	PRESSURE PLATES, REAR DRUM	75-22
H15	LUBE LINES, PICKER BAR DRUM	75-34	A21	PUMP DRIVE, HYDROSTATIC (699)	15-2
H18	LUBRICATOR, CHARGER	75-37	B15	PUMP, CHARGE (HYDROSTATIC DRIVE)	25-4
			C24	PUMP, CONTROL (POWER STEERING)	35-10
			B24	PUMP, HYDRAULIC	30-1
			B12	PUMP, HYDROSTATIC DRIVE	25-1
			D25	PUMP, WATER (699)	45-7

D9	TACHOMETER (499)	35-20
D9	TACHOMETER (699)	35-20
E10	TAIL LAMP	50-5
D22	TANK, WATER AND FILTER	45-4
D19	TANK, WATER AND FILTER (499)	45-1
D20	TANK, WATER AND FILTER (699)	45-2
D21	TANK, WATER AND FILTER(699)	45-3
I4	THERMOSTAT, CAB	80-10
D6	THROTTLE (STANDARD TRANSMISSION)	35-17

W

E10	WARNING LAMP	50-5
D23	WATER LINES	45-5
D24	WATER LINES	45-6
D25	WATER LINES	45-7
E1	WATER LINES, PLATFORM	45-8
E4	WATER METERING VALVE	45-11
D25	WATER PUMP	45-7
D22	WATER TANK	45-4
D19	WATER TANK (499)	45-1

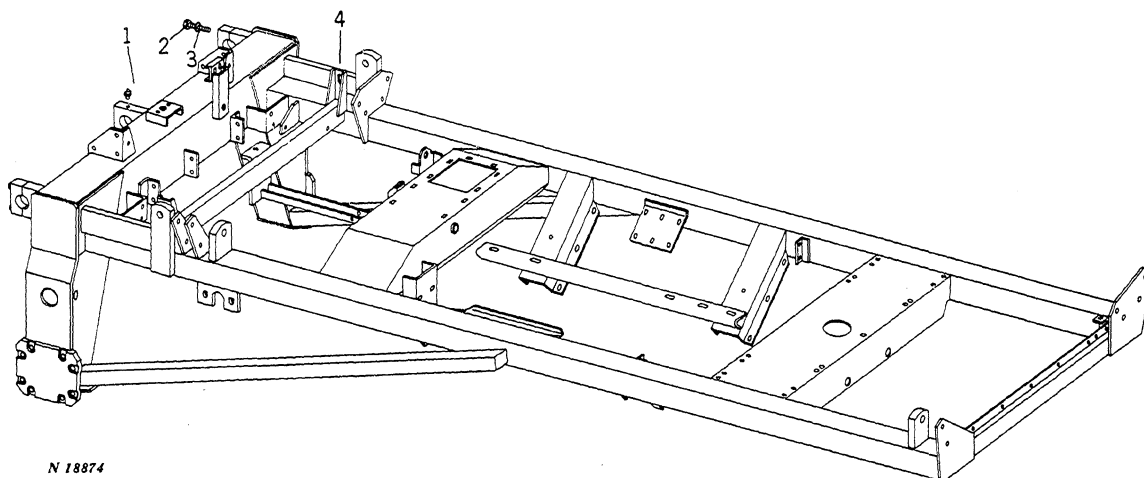
ALPHABETICAL INDEX - CONTINUED

GRID		PAGE	GRID	PAGE
D20	WATER TANK (699)	45-2		
D21	WATER TANK (699)	45-3		
E1	WATER VALVE	45-8		
H17	WETTING AGENT	75-36		
A12	WHEEL SHIELD	10-3		
D17	WHEEL, ADJUSTABLE REAR	40-7		
E19	WHEEL, FAN	55-6		
B10	WHEEL, MAIN	20-5		
D12	WHEEL, REAR	40-2		
C22	WHEEL, STEERING	35-8		
H21	WINDOWS, CAB	80-2		
I10	WINDSHIELD WIPER, FRONT	80-16		
I10	WIPER BLADE	80-16		
I18	WIRING DIAGRAM, CAB	85-7		

MEMORANDA

MAIN FRAME

N18874

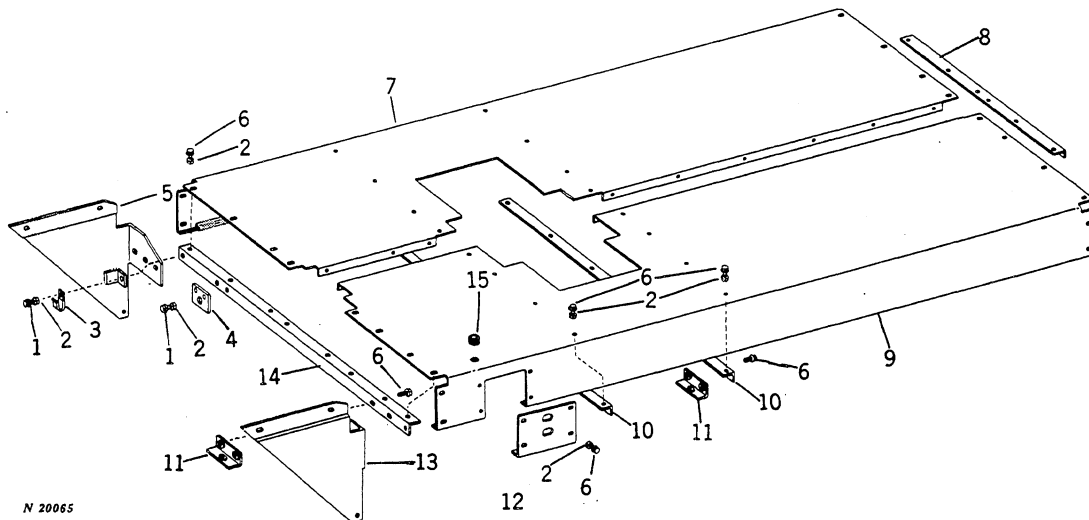


N 18874

KEY	PART NO.	SERIAL NO.	DESCRIPTION
1	JD 7797	(-)	FITTING, GREASE, STRAIGHT, 1/4" (3 USED)
2	19H 1945	(-)	SCREW, CAP, 1/2" X 3-1/4" (6 USED)
3	12H 301	(-)	WASHER, LOCK, 1/2"
4	AN 110857	(-)	FRAME, MAIN (499) (LOW-DRUM)
	AN 110858	(-450)	FRAME, MAIN (699) (ILLUSTRATED) (LOW-DRUM)
	AN 110858	(-1400)	FRAME, MAIN (699) (HIGH-DRUM)
	AN 112023	(451-)	FRAME, MAIN (699) (LOW-DRUM)
	AN 112023	(1401-)	FRAME, MAIN (699) (HIGH-DRUM)
	AN 113224	(-)	FRAME, MAIN (499) (HIGH-DRUM)

ENGINE FRONT HOOD

N20065

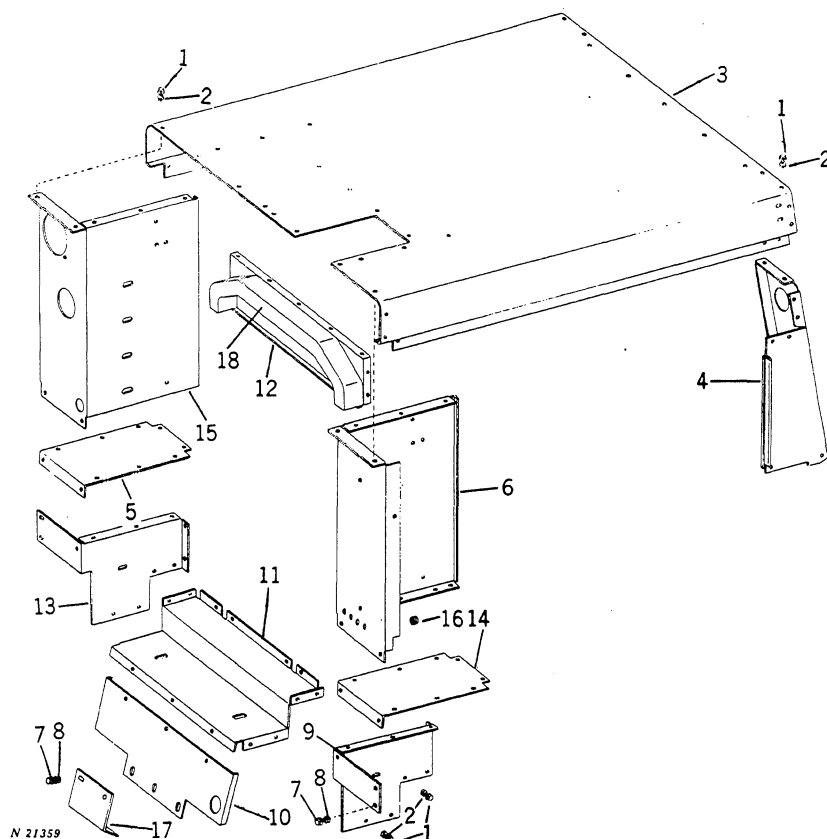


N 20065

KEY	PART NO.	SERIAL NO.	DESCRIPTION
1	N 10212	(-)	SCREW, SPIN LOCK, 5/16" X 3/4" (4 USED)
2	N 10213	(-)	NUT, SPIN LOCK, 5/16"
3	N 14433	(-)	J-CLAMP
4	N 111182	(-)	GUIDE, THROTTLE ROD
5	AN 110346	(-)	GUSSET, PLATFORM SUPPORT, R.H.
6	N 71292	(-)	SCREW, SPIN LOCK, 5/16" X 1/2" (53 USED)
7	N 110444	(-)	HOOD, FRONT, R.H.
8	N 111467	(-)	SUPPORT, ENGINE HOOD, REAR
9	N 124430	(-)	HOOD, FRONT, L.H. (SUB. FOR N110445)
10	N 110446	(-)	SUPPORT, ENGINE HOOD, CENTER (2 USED)
11	AN 110295	(-661)	BRACKET, HYDRAULIC LINES (499 LOW-DRUM)
	AN 110295	(-544)	BRACKET, HYDRAULIC LINES (499 HIGH-DRUM)
	AN 110295	(-1001)	BRACKET, HYDRAULIC LINES (699 LOW-DRUM)
	AN 110295	(-2500)	BRACKET, HYDRAULIC LINES (699 HIGH-DRUM)
	AN 121758	(662-)	BRACKET, HYDRAULIC LINES (499 LOW-DRUM)
	AN 121758	(545-)	BRACKET, HYDRAULIC LINES (499 HIGH-DRUM)
	AN 121758	(1002-)	BRACKET, HYDRAULIC LINES (699 LOW-DRUM)
	AN 121758	(2501-)	BRACKET, HYDRAULIC LINES (699 HIGH-DRUM)
12	N 111977	(-)	PLATE, ENGINE HOOD
13	AN 110347	(-)	GUSSET, PLATFORM SUPPORT, L.H.
14	N 110443	(-)	SUPPORT, HOOD, FRONT
15	P 48420	(-)	GROMMET (2 USED)

REAR HOOD AND RADIATOR SUPPORTS

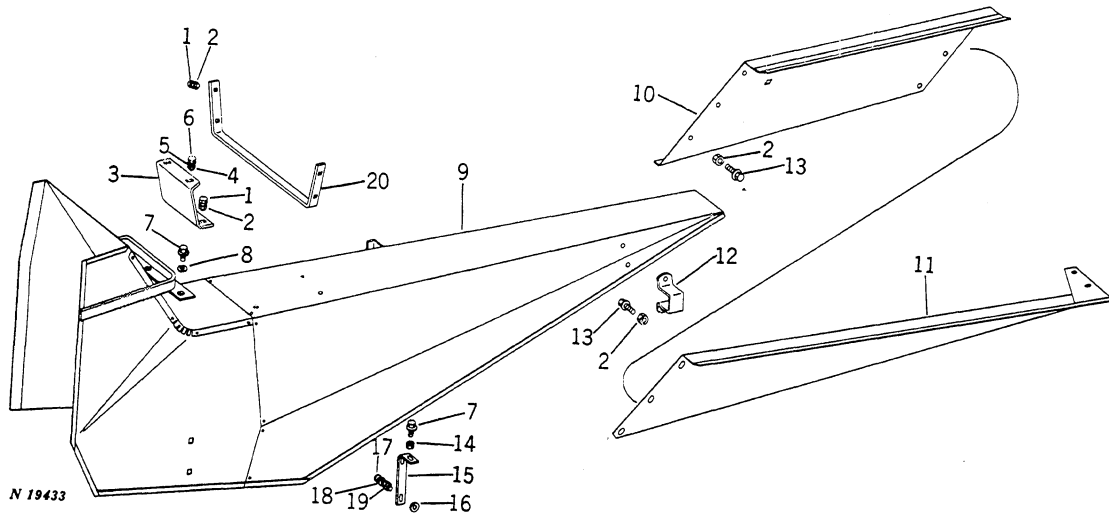
N21359



KEY	PART NO.	SERIAL NO.	DESCRIPTION
1	N 71292	-	SCREW, SPIN LOCK, 5/16" X 1/2" (65 USED)
2	N 10213	-	NUT, SPIN LOCK, 5/16"
3	N 110371	-	HOOD, REAR
4	AN 110316	-	CORNER, REAR, R.H.
	AN 110317	-	CORNER, REAR, L.H. (GAS AND DIESEL) (ILLUSTRATED)
	AN 111118	-	CORNER, REAR, L.H. (LP-GAS)
5	N 111466	-	FLOOR, FRONT, R.H. (STANDARD TRANSMISSION)
	N 111468	-	FLOOR, FRONT, R.H. (HYDROSTATIC DRIVE)
6	N 115585	-	SIDE, RADIATOR, UPPER, L.H. (SUB. FOR N112159)
7	N 14822	-	SCREW, SPIN LOCK, 3/8" X 3/4" (12 USED)
8	N 10215	-	NUT, SPIN LOCK, 3/8"
9	N 111471	-	SUPPORT, RADIATOR, LOWER, L.H.
10	N 111854	-	SHIELD, WHEEL, REAR (499)
	N 110709	-	SHIELD, WHEEL, REAR (699) (EXCEPT NB329D DIESEL ENGINES)
	N 112390	-	SHIELD, WHEEL, REAR (699) (NB329D DIESEL ENGINE)
11	N 111469	-	SUPPORT, RADIATOR, LOWER, CENTER
12	N 111463	-	SUPPORT, RADIATOR, UPPER, CENTER
13	N 111470	-	SUPPORT, RADIATOR, LOWER, R.H.
14	N 111466	-	FLOOR, FRONT, L.H.
15	N 112158	-250	SIDE, RADIATOR, UPPER, R.H. (499) (LOW-DRUM)
	N 112158	-450	SIDE, RADIATOR, UPPER, R.H. (699) (LOW-DRUM)
	N 112158	-1400	SIDE, RADIATOR, UPPER, R.H. (699) (HIGH-DRUM)
	N 115584	251-	SIDE, RADIATOR, UPPER, R.H. (499) (LOW-DRUM) (SUB. FOR N114608)
	N 115584	101-	SIDE, RADIATOR, UPPER, R.H. (499) (HIGH-DRUM) (SUB. FOR N114608)
	N 115584	451-	SIDE, RADIATOR, UPPER, R.H. (699) (LOW-DRUM) (SUB. FOR N114608)
	N 115584	1401-	SIDE, RADIATOR, UPPER, R.H. (699) (HIGH-DRUM) (SUB. FOR N114608)
16	P 48420	-	GROMMET
17	N 112391	-	GUARD (699) (NB329D DIESEL ONLY)
18	N 111924	-	FOAM, BULK HEAD

PLANT SHIELD (MAIN FRAME)

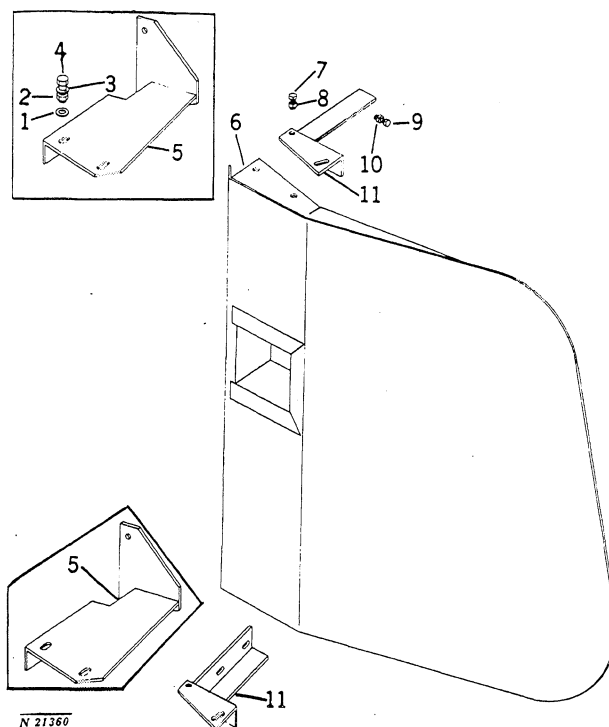
N19433



KEY	PART NO.	SERIAL NO.	DESCRIPTION
1	N 10212	-	SCREW, SPIN LOCK, 3/16" X 3/4" (6 USED)
2	N 10213	-	NUT, SPIN LOCK, 5/16"
3	N 110796	-	SUPPORT, SHIELD, R.H. (499) (LOW-DRUM)
	N 110797	-	SUPPORT, SHIELD, L.H. (499) (LOW-DRUM)
4	14H 812	-	NUT, 3/8"
5	12H 304	-	WASHER, LOCK, 3/8"
6	19H 1731	-	SCREW, CAP, 3/8" X 1"
7	N 10214	-	SCREW, SPIN LOCK, 3/8" X 1"
8	24H 1308	-	WASHER, 35/64" X 1" X .134"
9	AN 110500	-	SHIELD, FRONT, R.H. (499 HIGH-DRUM; 699)
	AN 110501	-	SHIELD, FRONT, L.H. (499 HIGH-DRUM; 699)
	AN 110506	-	SHIELD, FRONT, R.H. (499) (LOW-DRUM)
	AN 110507	-	SHIELD, FRONT, L.H. (499) (LOW-DRUM)
10	N 34857	-	SHIELD, CENTER, L.H.
	N 34856	-	SHIELD, CENTER, R.H.
11	AN 111859	-	SHIELD, REAR, L.H. (SUB. FOR AN33257)
	AN 111858	-	SHIELD, REAR, R.H. (SUB. FOR AN33256)
12	N 34851	-	CLAMP, SHIELD SUPPORT
13	N 71292	-	SCREW, SPIN LOCK, 5/16" X 1/2"
14	N 10215	-	NUT, SPIN LOCK, 5/16"
15	N 34850	-	BRACKET
16	24H 1308	-	WASHER, 13/32" X 1" X .134"
17	03H 1540	-	BOLT, CGE., 5/16" X 3/4"
18	12H 303	-	WASHER, LOCK, 5/16"
19	14H 785	-	NUT, 5/16"
20	N 110786	-	STRAP, TUNNEL TIE

MAIN WHEEL SHIELD

N21360

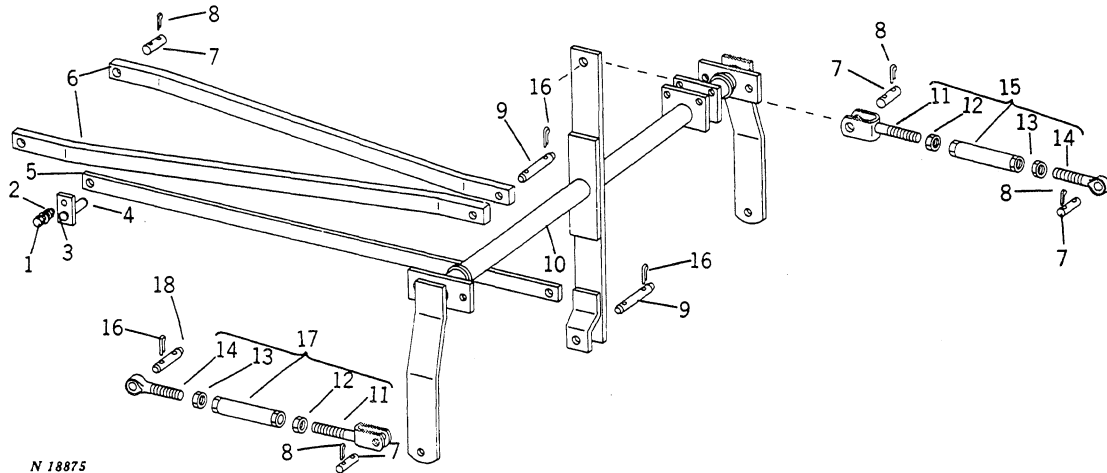


KEY	PART NO.	SERIAL NO.	DESCRIPTION
1	24H 1136	(-)	WASHER, 11/32" X 11/16" X .060"
2	14H 785	(-)	NUT, 5/16"
3	12H 303	(-)	WASHER, LOCK, 5/16"
4	19H 1900	(-)	SCREW, CAP, 5/16" X 3/4"
5	AN 32669	(-250)	BRACKET, L.H. (2 USED) (499 LOW-DRUM)
	AN 32669	(-450)	BRACKET, L.H. (2 USED) (699 LOW-DRUM)
	AN 32669	(-1400)	BRACKET, L.H. (2 USED) (699 HIGH-DRUM)
	AN 32668	(-250)	BRACKET, R.H. (2 USED) (499 LOW-DRUM)
	AN 32668	(-450)	BRACKET, R.H. (2 USED) (699 LOW-DRUM)
	AN 32668	(-1400)	BRACKET, R.H. (2 USED) (699 HIGH-DRUM)
6	AN 30726	(-)	SHIELD, R.H. LOW-DRUM
	AN 112396	(-)	SHIELD, L.H. LOW-DRUM (SUB. FOR AN30728 AND AN110849)
	AN 30722	(-)	SHIELD, R.H. HIGH-DRUM
	AN 112397	(-)	SHIELD, L.H. HIGH-DRUM (SUB. FOR AN30724 AND AN110851)
7	N 14822	(-)	SCREW, SPIN LOCK, 3/8" X 3/4" (4 USED)
8	N 10215	(-)	NUT, SPIN LOCK, 3/8"
9	N 10212	(-)	SCREW, SPIN LOCK, 5/16" X 3/4" (4 USED)
10	N 10213	(-)	NUT, SPIN LOCK, 5/16"
11	AN 112535	(451 -)	BRACKET (699 LOW-DRUM)
	AN 112535	(1401 -)	BRACKET (699 HIGH-DRUM)
	AN 112535	(251 -)	BRACKET (499 LOW-DRUM)
	AN 112535	(101 -)	BRACKET (499 HIGH-DRUM)
	AN 112534	(451 -)	BRACKET (699 LOW-DRUM)
	AN 112534	(1401 -)	BRACKET (699 HIGH-DRUM)
	AN 112534	(251 -)	BRACKET (499 LOW-DRUM)
	AN 112534	(101 -)	BRACKET (499 HIGH-DRUM)

STABILIZER BARS

499 (-250), 699 LOW-DRUM (-450), 699 HIGH-DRUM (-1400)

N18875

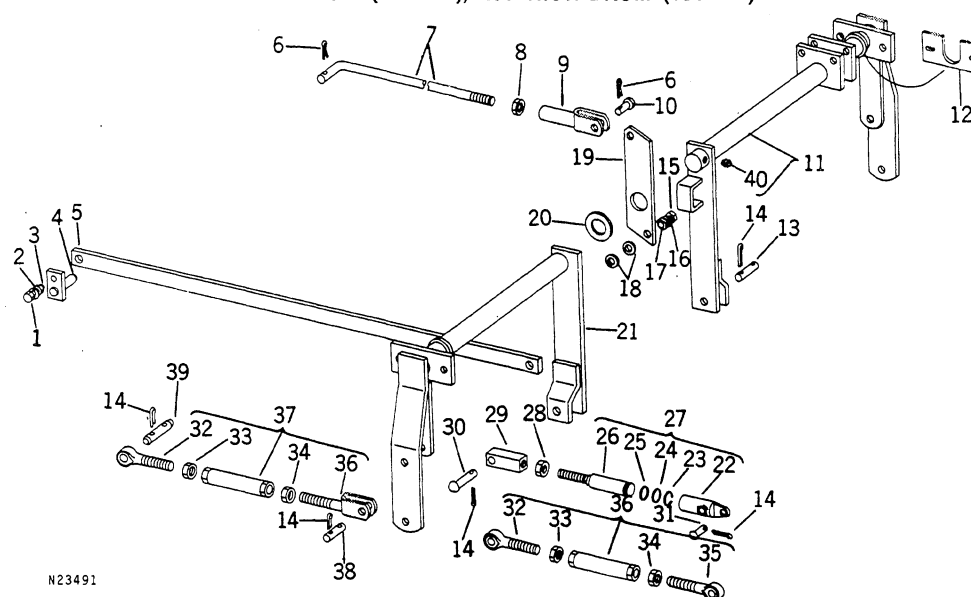


N 18875

KEY	PART NO.	SERIAL NO.	DESCRIPTION
1	19H 1900	(-)	SCREW, CAP, 5/16" X 3/4"
2	12H 303	(-)	WASHER, LOCK, 5/16"
3	14H 785	(-)	NUT, 5/16"
4	AN 32582	(-)	PIN, INNER STABILIZER (2 USED) (699)
5	N 116065	(-)	BAR, STABILIZER, INNER (2 USED) (699) (SUB. FOR N34843)
6	N 116066	(-)	BAR, STABILIZER, INNER (2 USED) (499) (SUB. FOR N111578)
7	N 60865	(-)	PIN (2 USED) (499)
8	11H 218	(-)	PIN, COTTER, 3/16" X 1-1/2"
9	L 4037 N	(-)	PIN
10	AN 110557	(-)	ROCKSHAFT, STABILIZER
11	AN 33298	(-)	YOKE
12	14H 836	(-)	NUT, 7/8"
13	14H 883	(-)	NUT, L.H. THREAD, 7/8"
14	N 34839	(-)	EYEBOLT, L.H. THREAD
15	AN 110449	(-)	ADJUSTMENT ASSEMBLY, STABILIZER, CENTER
16	11H 215	(-)	PIN, COTTER, 1/4" X 1-1/2"
17	AN 33296	(-)	ADJUSTMENT ASSEMBLY, STABILIZER, OUTER (2 USED) (699)
	AN 111013	(-)	ADJUSTMENT ASSEMBLY, STABILIZER, OUTER (2 USED) (499)
18	N 34497	(-)	PIN (2 USED) (699)
	L 4036 N	(-)	PIN (2 USED) (499)

STABILIZER BARS
699 LOW-DRUM (451-), 699 HIGH-DRUM (1401-)
499 LOW-DRUM (251-), 499 HIGH-DRUM (101-)

N23491

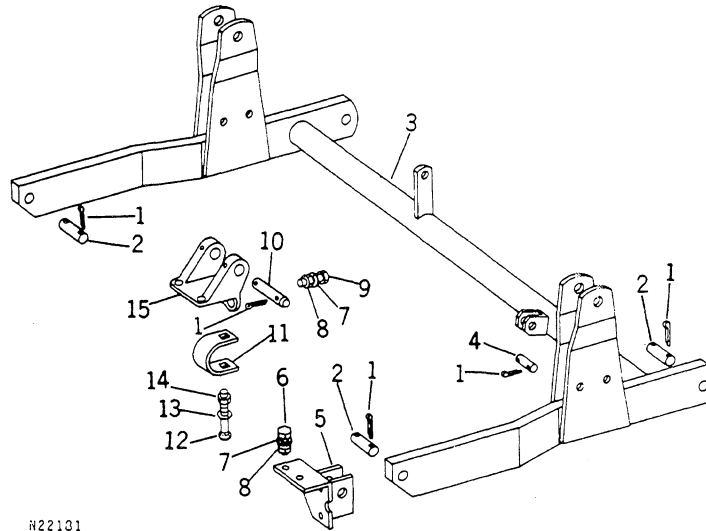


N23491

KEY	PART NO.	SERIAL NO.	DESCRIPTION
1	19H 1900	(-)	SCREW, CAP, 5/16" X 3/4"
2	12H 303	(-)	WASHER, LOCK, 5/16"
3	14H 785	(-)	NUT, 5/16"
4	AN 32582	(-)	PIN, INNER STABILIZER (2 USED)
5	N 116065	(-)	BAR, STABILIZER, INNER (2 USED) (699 AND 499 HIGH-DRUM) (SUB. FOR N34843)
	N 116066	(-)	BAR, STABILIZER, INNER (2 USED) (499 LOW-DRUM) (SUB. FOR N111578)
6	J 16931	(-)	PIN, SPRING LOCKING
7	N 113602	(-)	ROD, STOP, LONG
8	14H 774	(-)	NUT, JAM, UNF, 3/8"
9	L 324 T	(-)	ROD, END
10	L 1498 N	(-)	PIN
11	AN 112948	(-)	ROCKSHAFT, STABILIZER, R.H.
12	N 114120	(-)	SHIM (USE AS REQUIRED)
13	M 2419 DN	(-)	PIN (2 USED)
14	11H 218	(-)	PIN, COTTER, 3/16" X 1-1/2"
15	19H 1777	(-)	SCREW, CAP, 1/2" X 1-3/4"
16	12H 301	(-)	WASHER, LOCK, 1/2"
17	14H 809	(-)	NUT, 1/2"
18	N 115269	(-)	WASHER, ECCENTRIC (2 USED)
19	N 113603	(-)	ARM, ACTUATING
20	24H 1572	(-)	WASHER, 1-13/16" X 2-3/8" X .060" (USE AS REQUIRED)
21	AN 111933	(-)	ROCKSHAFT, STABILIZER, L.H.
22	N 114605	(-)	BARREL
23	H 32735	(-)	RING, LOCK
24	A 4540 R	(-)	O-RING
25	AH 14349	(-)	SEAL, WIPER
26	N 114604	(-)	ROD, PISTON
27	AN 112032	(-)	CYLINDER, HYDRAULIC, STABILIZER, HEIGHT SENSING
28	14H 810	(-)	NUT, JAM, UNF, 7/8"
29	N 113327	(-)	END, STABILIZER CYLINDER
30	B 11600	(-)	PIN
31	N 583 M	(-)	PIN
32	N 34839	(-)	EYEBOLT, L.H. THREAD
33	14H 883	(-)	NUT, L.H. THREAD, 7/8"
34	14H 836	(-)	NUT, 7/8"
35	P 2704 B	(-)	EYEBOLT
36	AN 112041	(-)	ADJUSTMENT, STABILIZER (2 USED)
37	AN 33296	(-)	ADJUSTMENT, STABILIZER, OUTER (2 USED)
	AN 111013	(-)	ADJUSTMENT, STABILIZER (2 USED) (499 LOW-DRUM)
38	N 60865	(-)	PIN
39	N 34497	(-)	PIN
40	JD 7798	(-)	FITTING, GREASE, STRAIGHT, 1/8"
..	AN 130937	(-)	KIT, REPAIR, FOR AN112032 HYDRAULIC CYLINDER

PICKING UNIT LIFT ARMS
(499 LOW-DRUM AND 499 HIGH-DRUM WITH SIMULTANEOUS LIFT)

N22181

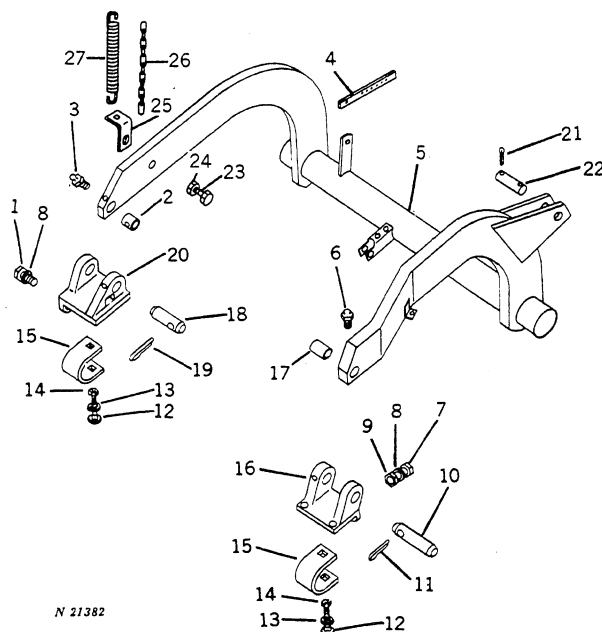


N22131

KEY	PART NO.	SERIAL NO.	DESCRIPTION
1	11H 249	(-)	PIN, COTTER, 1/4" X 2"
2	C 1695 R	(-)	PIN (4 USED) (LOW-DRUM)
3	AN 113047	(-)	ROCKSHAFT (LOW-DRUM) (SUB. FOR AN111137)
	AN 113165	(-)	ROCKSHAFT (HIGH-DRUM)
4	30879	(-)	PIN, CYLINDER
5	AN 111000	(-)	BRACKET, UNIT LIFT, R.H. (LOW-DRUM)
	AN 111001	(-)	BRACKET, UNIT LIFT, L.H. (ILLUSTRATED) (LOW-DRUM)
6	19H 1821	(-)	SCREW, CAP, 7/16" X 1-1/4" (10 USED)
7	12H 293	(-)	WASHER, LOCK, 7/16"
8	14H 813	(-)	NUT, 7/16"
9	19H 1978	(-)	SCREW, CAP, 7/16" X 1-1/2" (HIGH-DRUM)
10	N 30957	(-)	PIN, PIVOT (HIGH-DRUM)
11	N 31857	(-)	STRAP, ROW ADJUSTMENT (HIGH-DRUM)
12	03H 1505	(-)	BOLT, CGE., 5/16" X 1-3/4" (HIGH-DRUM)
13	12H 303	(-)	WASHER, LOCK, 5/16"
14	14H 785	(-)	NUT, 5/16"
15	N 30302	(-)	BRACKET, UNIT LIFT (HIGH-DRUM)

PICKING UNIT LIFT ARMS (499 HIGH-DRUM WITH INDIVIDUAL LIFT AND 699)

N21382



KEY	PART NO.	SERIAL NO.	DESCRIPTION
1	19H 1924	(-)	SCREW, CAP, 7/16" X 3/4"
2	N 30973	(-276)	BUSHING, BRONZE, INNER LIFT ARM (699 LOW-DRUM)
	N 30973	(-697)	BUSHING, BRONZE, INNER LIFT ARM (699 HIGH-DRUM)
3	JD 7797	(-)	FITTING, GREASE, STRAIGHT, 1/4"
4	E 1856 M	(-)	STRAP TIE
5	AN 112718	(-)	ARM ASSEMBLY, R.H., WITH BUSHINGS AND GREASE FITTINGS (SUB. FOR AN111164)
	AN 112719	(-)	ARM ASSEMBLY, L.H., WITH BUSHINGS AND GREASE FITTINGS (SUB. FOR AN111165)
6	JD 7759	(-)	FITTING, GREASE, STRAIGHT, 1/8"
7	19H 1978	(-)	SCREW, CAP, 7/16" X 1-1/2"
8	12H 293	(-)	WASHER, LOCK, 7/16"
9	14H 813	(-)	NUT, 7/16"
10	N 30957	(-)	PIN, PIVOT, OUTER LIFT ARM
11	11H 250	(-)	PIN, COTTER, 1/4" X 2-1/2"
12	03H 1505	(-)	BOLT, CGE., 5/16" X 1-3/4"
13	12H 303	(-)	WASHER, LOCK, 5/16"
14	14H 785	(-)	NUT, 5/16"
15	N 31857	(-)	STRAP, ROW ADJUSTMENT (2 USED)
16	N 30302	(-)	BRACKET, PIVOT, OUTER
17	L 2283 N	(-276)	BUSHING, BRONZE, OUTER LIFT ARM (699 LOW-DRUM)
	L 2283 N	(-697)	BUSHING, BRONZE, OUTER LIFT ARM (699 HIGH-DRUM)
18	N 30956	(-)	PIN, PIVOT, INNER LIFT ARM
19	11H 251	(-)	PIN, COTTER, 1/4" X 3"
20	N 30300	(-)	BRACKET, PIVOT, R.H., INNER
	N 30301	(-)	BRACKET, PIVOT, L.H., INNER
21	11H 249	(-)	PIN, COTTER, 1/4" X 2"
22	30879	(-)	PIN, CYLINDER
23	N 10212	(-)	SCREW, SPIN LOCK, 5/16" X 3/4"
24	N 10213	(-)	NUT, SPIN LOCK, 5/16"
25	N 114591	(-)	BRACKET, SPRING, HEIGHT SENSING
26	AL 1955 N	(-)	CHAIN, 15 LINKS, HEIGHT SENSING, LOW-DRUM
27	248S E	(-)	SPRING, 86-COILS, HEIGHT SENSING