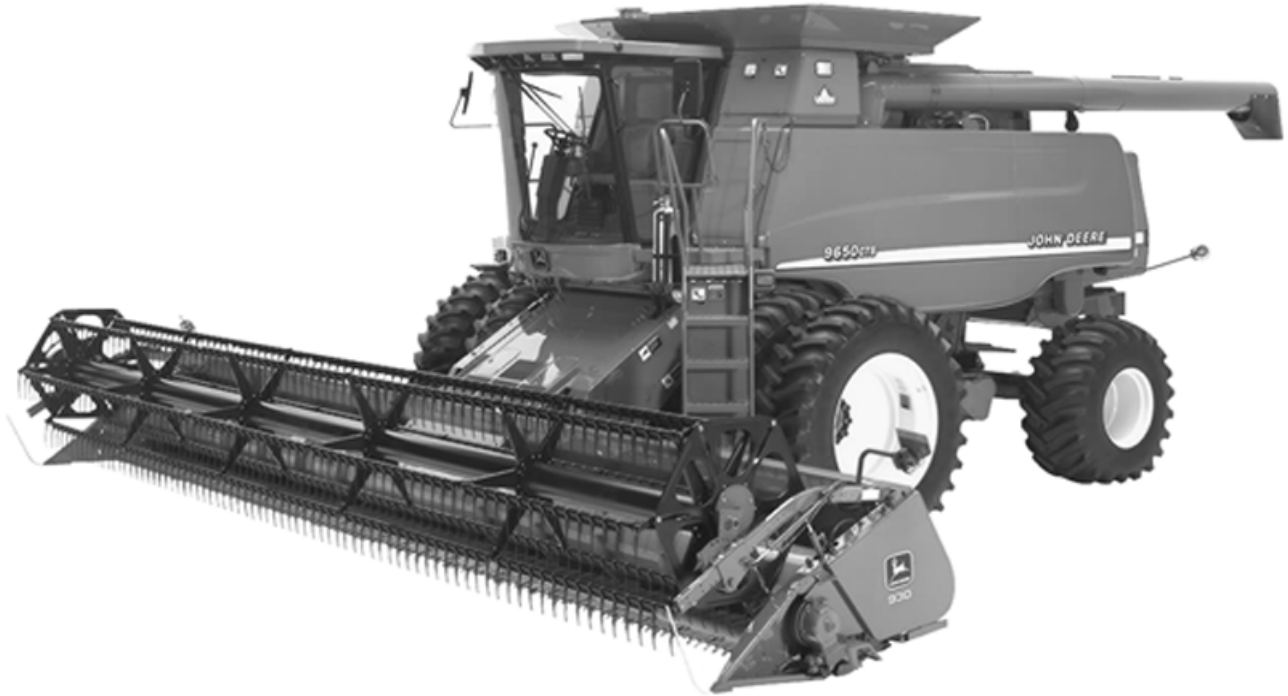


HP8981

-UN-31AUG99



*JOHN DEERE 9650CTS SELF-PROPELLED COMBINE™ WITH 900 SERIES PLATFORM
MANUFACTURED (1999-)*

(SPECIFICATIONS AND DESIGN SUBJECT TO CHANGE WITHOUT NOTICE)

COPYRIGHT (C) 2000. DEERE & COMPANY. MOLINE, ILLINOIS, USA. ALL RIGHTS RESERVED.

NOTE

FOR 900 SERIES PLATFORM PARTS INFORMATION, REFER TO JOHN DEERE PARTS CATALOG - PC2104.

FOR 40 SERIES CORN HEAD PARTS INFORMATION, REFER TO JOHN DEERE PARTS CATALOG - PC1223.

FOR 50A SERIES ROW-CROP HEAD PARTS INFORMATION, REFER TO JOHN DEERE PARTS CATALOG - PC1747.

FOR THREE-ROLLER BELT PICKUP PARTS INFORMATION, REFER TO JOHN DEERE PARTS CATALOG - PC2210.

FOR 918 AND 920 DRAPER PARTS INFORMATION, REFER TO JOHN DEERE PARTS CATALOG - PC2212.

FOR 90 SERIES CORN HEAD PARTS INFORMATION, REFER TO JOHN DEERE PARTS CATALOG - PC2404.

FOR 900R & F SERIES PLATFORM PARTS INFORMATION, REFER TO JOHN DEERE PARTS CATALOG - PC2771.

FOR 914P BELT PICKUP PARTS INFORMATION, REFER TO JOHN DEERE PARTS CATALOG - PC2772.

IMPORTANT

THIS PARTS CATALOG CONTAINS PARTS INFORMATION FOR THE 9650CTS SELF-PROPELLED COMBINE. VINTAGE IS DETERMINED BY THE COMBINE SERIAL NUMBER OR THE PRODUCT IDENTIFICATION NUMBER (PIN). IT IS IMPORTANT THAT THE CORRECT NUMBERS BE USED WHEN ORDERING PARTS.

PRODUCT INFORMATION NUMBER (PIN) PLATE

THE PRODUCT IDENTIFICATION NUMBER (PIN) PLATE IS LOCATED NEAR THE RIGHT-HAND SIDE OF THE TOOL BOX. AN EXAMPLE OF THE TWO-LINES ON THIS PIN PLATE IS:

HO9650X685000
COMBINE

(FIRST LINE)

HO - MANUFACTURING UNIT (HARVESTER WORKS)

9650 - MODEL IDENTIFIER

X - CONFIGURATION CODE/MODEL IDENTIFIER SUFFIX

900000 - SEQUENTIAL NUMBER USED IN SERIAL NO. COLUMN

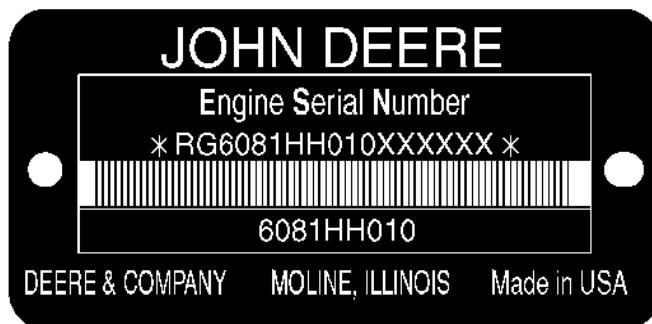
(SECOND LINE)

COMBINE - TYPE OF PRODUCT

TWO LINE BAR CODED ENGINE SERIAL NUMBER PLATE

RGP5229

-UN-21JUN99



RGP5229

FIRST LINE

RG - WATERLOO ENGINE WORKS

6

081 (8.1 LITERS)

H - AIR-TO-AIR

H

XXXXXX

SECOND LINE

6081HH010

DEFINES

DESIGNATES ENGINE MANUFACTURER.

DESIGNATES NUMBER OF CYLINDERS.

DESIGNATES LITER DISPLACEMENT.

DESIGNATES TYPE OF AIR INTAKE SYSTEM.

DESIGNATES HARVESTER VEHICLE.

DESIGNATES ENGINE SERIAL NUMBER.

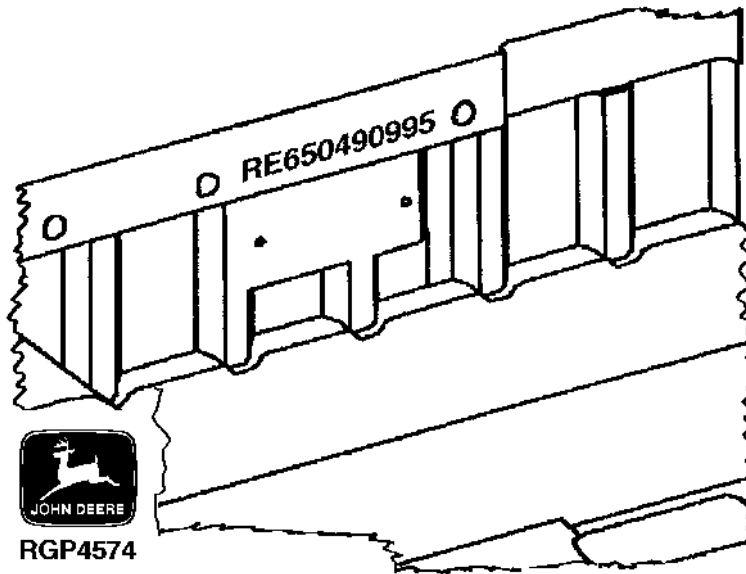
APPLICATION

9650 CTS

SHORT BLOCK SERIAL NUMBER IDENTIFICATION

RGP4574

-UN-02OCT95



SERIAL NUMBER STAMPED INTO CASTING OF BLOCK NEAR PREVIOUS SERIAL NUMBER PLATE.

EXAMPLE: RE650490995

- | | |
|-----------------------------------|---------|
| 1. DESIGNATES SERVICE PART NUMBER | RE65049 |
| 2. DESIGNATES MONTH ASSEMBLED | 09 |
| 3. DESIGNATES YEAR ASSEMBLED | 95 |

**Thanks very much for your reading,
Want to get more information,
Please click here, Then get the complete
manual**

JustClickHere 

NOTE:

**If there is no response to click on the link above,
please download the PDF document first, and then
click on it.**

**Have any questions please write to me:
admin@servicemanualperfect.com**

PARTS LISTING INFORMATION

SERIAL NUMBER OR PRODUCT IDENTIFICATION NUMBER (PIN) INFORMATION SHOWS ON WHICH MACHINES THE PART MAY BE USED; FOR EXAMPLE:

- THE PART CAN BE USED ON ALL MACHINES.
- 000000 THE PART CAN BE USED ON ALL MACHINES UP TO AND INCLUDING THE SERIAL NUMBER LISTED.
- 000000- THE PART CAN BE USED ON ALL MACHINES BEGINNING WITH THE SERIAL NUMBER LISTED.
- 000000-000000 THE PART CAN BE USED ON ALL MACHINES BETWEEN AND INCLUDING SERIAL NUMBERS LISTED.

WHEN XXXXXX'S ARE LISTED IN PLACE OF A SERIAL NUMBER, A SERIAL NUMBER CHANGE WAS MADE, BUT THE EXACT SERIAL NUMBER WAS NOT AVAILABLE WHEN THE CATALOG WAS PRINTED.

DIRECTION ARROW

ARROWS ARE USED WITH ILLUSTRATIONS TO INDICATE THE FRONT OF THE UNIT. "RIGHT-HAND" AND "LEFT-HAND" SIDES ARE DETERMINED BY FACING IN THE DIRECTION OF MACHINE FORWARD TRAVEL.

BOX-ENCLOSED ILLUSTRATIONS

A KEY NUMBER, SHOWN IN THE PARTS LIST, IS ASSIGNED TO A BOX ENCLOSING ALL PARTS SOLD AS A SERVICE ASSEMBLY. A BOX NOT KEYED INCLUDES NON-CURRENT PARTS.

KITS

KIT INFORMATION WILL BE FOUND IMMEDIATELY FOLLOWING THE STORY IN WHICH IT IS USED. THE ILLUSTRATION IS REPEATED WITH ONLY THE KIT PARTS CALLED OUT AND WITH ALL OTHER PARTS SHOWN IN PHANTOM.

JDM REMANUFACTURED COMPONENTS

THE SERVICE PARTS LISTED IN THIS CATALOG ARE INTENDED FOR THE REPAIR OF ORIGINAL EQUIPMENT COMPONENTS. ALTHOUGH MOST SERVICE PARTS MAY BE USED TO REPAIR REMANUFACTURED COMPONENTS, THE REMANUFACTURED DESIGN MAY CHANGE PARTS SUFFICIENTLY SO THAT SERVICE PARTS ARE INADEQUATE OR NOT USABLE.

BOLT AND CAP SCREW STRENGTH IDENTIFICATION

BOLTS AND CAP SCREWS REQUIRED TO HAVE HIGH-STRENGTH QUALITIES EQUIVALENT TO SAE GRADE 8 ARE IDENTIFIED THROUGHOUT THIS CATALOG BY THE DESCRIPTION HS SAE 8. ALL STANDARD BOLTS AND CAP SCREWS ARE SAE GRADE 5 OR LOWER. BOLTS AND CAP SCREWS REQUIRED TO HAVE HIGH-STRENGTH QUALITIES EQUIVALENT TO PROPERTY CLASS 10.9 ARE IDENTIFIED THROUGHOUT THIS CATALOG BY THE DESCRIPTION 10.9. ALL STANDARD BOLTS AND CAP SCREWS ARE PROPERTY CLASS 8.8 OR LOWER.

SI UNITS OF MEASURE

METRIC DIMENSIONS ARE GIVEN, WHERE APPLICABLE, THROUGHOUT THIS PARTS CATALOG.

TRADEMARKS

THROUGHOUT THIS PARTS CATALOG, YOU WILL FIND THE FOLLOWING DEERE & COMPANY TRADEMARKS:

DIAL-A-SPEED™
DIAL-A-MATIC™
HARVESTRAK™
CONTOUR MASTER™

POSI-TORQ™
TORQ-GARD SUPREME®
QUIK-TATCH™

CHANGE INDICATOR LINE

CHANGES AFFECTING THE ORDERING OF PARTS ARE IDENTIFIED BY VERTICAL LINES MARKED IN THE LEFT-HAND MARGIN OF REVISED PARTS LISTING IMAGES. A LINE IS ALSO AT THE LEFT-HAND EDGE OF THE SAME PART NUMBER IN THE NUMERICAL INDEX TO SHOW THE LOCATION OF REVISED INFORMATION.

FUNCTION CODE

(EXAMPLE - FC: 5000)

FUNCTION CODES ARE LOCATED ON EACH PAGE IN THE UPPER RIGHT-HAND CORNER IN THE BOX. THE CODE LISTED IS A GROUPING CODE THAT CAN BE USED FOR WARRANTIES AND FOR DTAC TO IDENTIFY CERTAIN AREAS.

COMPLETE GOODS LISTINGS

COMPLETE GOODS ARE IN BOLD FACE TYPE. ORDER SEPARATELY. DO NOT INCLUDE ON REPLACEMENT PARTS ORDER.

SECTION INDEX

SECTION 10 - GENERAL INFORMATION

SECTION 20 - ENGINE ACCESSORIES

SECTION 25 - ENGINE

SECTION 30 - FUEL AND AIR

SECTION 40 - ELECTRICAL

SECTION 50 - POWER TRAIN

SECTION 60 - STEERING AND BRAKES

SECTION 70 - HYDRAULICS

SECTION 80 - BODY AND SHIELDS

SECTION 90 - OPERATOR'S STATION

SECTION 95 - AIR CONDITIONING AND HEATING

SECTION 100 - FEEDER HOUSE

SECTION 110 - THRESHING AND SEPARATION

SECTION 120 - CLEANING SHOE

SECTION 125 - ELEVATORS

SECTION 130 - RESIDUE DISPOSAL

SECTION 140 - DRIVES

SECTION 150 - GRAIN TANK AND UNLOADING AUGER

SECTION 155 - GREENSTAR YIELD MAPPING AND MONITOR SYSTEMS

SECTION 160 - RUBBER TRACK SYSTEM

SECTION 170 - DECALS

SECTION 180 - NUMERICAL INDEX

ALPHABETICAL INDEX

GRID		PAGE	GRID		PAGE
	A				
3D11	A/C COMPRESSOR MANIFOLD.....	95 - 11	3B24	ARMREST ROCKER SWITCHES	90 - 24
3D11	A/C COMPRESSOR R134A	95 - 11	3C1	ARMREST ROCKER SWITCHES	90 - 26
1B10	ACCESS DOOR, RADIATOR	20 - 8	1G6	ARMREST WIRING HARNESS.....	40 - 34
2J12	ACCESS DOOR, REAR HOOD	80 - 36	3B13	ASHTRAY	90 - 12
2G11	ACCUMULATOR AND MOUNTING, ONE GALLON	70 - 34	3B24	ASHTRAY	90 - 24
2G13	ACCUMULATOR PRESSURE GAUGE AND WIRING HARNESS	70 - 36	1H8	ASSEMBLY, CLUTCH (STARTER).....	40 - 62
2G9	ACCUMULATOR, ONE HALF GALLON	70 - 32	2E7	ATTENUATOR, HYDRAULIC STEERING.....	60 - 16
2G9	ACCUMULATOR, SINGLE MOUNTING BRACKET ONE HALF GALLON	70 - 32	4F15	AUGER COVERS AND CHANNEL, CROSS	150 - 32
3C11	ACTIVE HEADER HEIGHT CONTROL DISPLAY, R.H. CORNERPOST	90 - 36	4E3	AUGER DRIVE, UPPER TAILINGS	140 - 46
2F24	ACTIVE HEADER HEIGHT CONTROL HYDRAULIC LINE AND VALVE BLOCK	70 - 22	3J12	AUGER HOUSING, LOADING, CLEAN GRAIN	125 - 8
1D10	ADAPTER, OIL COOLER	25 - 30	4E20	AUGER SWING, HOSES AND LINES	150 - 12
1D9	ADAPTER, OIL COOLER BYPASS	25 - 29	4F1	AUGER SWIVEL SUPPORT AND BRACES	150 - 18
1D4	ADHESIVE, ROCKER ARM COVER GASKET	25 - 23	3J22	AUGER TROUGH, LOWER TAILINGS.....	125 - 18
4G18	ADJUSTABLE IDLER ASSEMBLY AND FRONT ARM ..	160 - 6	4F13	AUGER, GRAIN TANK CROSS	150 - 30
2B6	ADJUSTABLE REAR AXLE.....	50 - 3	4E18	AUGER, GRAIN TANK, VERTICAL UNLOADING	150 - 10
2E22	ADJUSTABLE REAR AXLE STEERING TIE RODS	60 - 32	4E24	AUGER, HORIZONTAL UNLOADING.....	150 - 16
4D13	ADJUSTING BRACKET, CYLINDER DRIVE, DUAL-RANGE	140 - 32	4F9	AUGER, HORIZONTAL UNLOADING.....	150 - 26
1H14	ADJUSTING MOTOR, CONCAVE.....	40 - 68	3J14	AUGER, LOADING, CLEAN GRAIN	125 - 10
1H19	ADJUSTING MOTOR, SEPARATOR FAN DRIVE	40 - 74	3K3	AUGER, LOWER TAILINGS	125 - 24
1E15	AID, ETHER	30 - 13	3K5	AUGER, LOWER TAILINGS DRIVE TIGHTENER	125 - 26
1E22	AIR CLEANER AND INTAKE TUBES.....	30 - 20	3J8	AUGER, LOWER, CLEAN GRAIN	125 - 4
1B19	AIR CONDITIONER COMPRESSOR FAN PULLEY	20 - 17	3J1	AUGER, SHOE GRAIN SUPPLY	120 - 22
3D14	AIR CONDITIONER COMPRESSOR HARDWARE	95 - 14	4E16	AUGER, VERTICAL, LOWER GEARCASE	150 - 8
3D12	AIR CONDITIONER COMPRESSOR HOSE	95 - 12	2B7	AXLE SHAFTS	50 - 4
1B19	AIR CONDITIONER COMPRESSOR IDLER PULLEY....	20 - 17	2B8	AXLE SPACERS	50 - 5
1B19	AIR CONDITIONER COMPRESSOR SUPPORT	20 - 17	2B7	AXLE SPACERS AND EXTENSIONS.....	50 - 4
3D7	AIR CONDITIONING AND HEATER DUCTS	95 - 7	4H1	AXLE, BOGEY WHEEL	160 - 14
3D4	AIR CONDITIONING AND HEATER HOUSING, LOWER	95 - 4	4G22	AXLE, IDLER	160 - 10
3D2	AIR CONDITIONING AND HEATER HOUSING, UPPER.....	95 - 2	2B6	AXLE, REAR, ADJUSTABLE.....	50 - 3
2F11	AIR CONDITIONING CONDENSER AND OIL COOLER	70 - 8	2E20	AXLE, REAR, SPINDLES (HEAVY DUTY).....	60 - 30
3D10	AIR CONDITIONING SYSTEM - EVAPORATOR HEATER.....	95 - 10	2E18	AXLE, REAR, SPINDLES (REGULAR DUTY)	60 - 28
3D9	AIR CONDITIONING SYSTEM - RECEIVER-DRYER ...	95 - 9			
3D8	AIR CONDITIONING SYSTEM - WATER VALVE	95 - 8		B	
1G10	AIR CONDITIONING WIRING HARNESS	40 - 38	1H10	BACKSHAFT SPEED SENSOR, FEEDER HOUSE.....	40 - 64
3D2	AIR DUCT, INTAKE	95 - 2	1B4	BALL BEARING, ROTOARY SCREEN DRIVE.....	20 - 2
1B6	AIR DUCT, ROTARY SCREEN.....	20 - 4	3G5	BAR, SPIKE TOOTH THRESHING CYLINDER	110 - 10
3D4	AIR FILTER, HEATER AND AIR CONDITIONER	95 - 4	1E12	BASE, FUEL FILTER	30 - 10
3B19	AIR SEAT SUSPENSION	90 - 18	4E12	BASE, GRAIN TANK	150 - 4
3B21	AIR SEAT SWITCH, OPERATOR'S	90 - 20	1D11	BASE, OIL FILTER	25 - 32
4G20	AIR SUSPENSION	160 - 8	1H22	BATTERY AND CABLES.....	40 - 77
3B19	AIR SUSPENSION, SEAT	90 - 18	3H12	BEARING AND LUBE LINES, MODULE FRONT.....	110 - 44
1H6	ALTERNATOR ADJUSTING STRAP.....	40 - 60	1C19	BEARING KIT, UNDERSIZED MAIN BEARING CRANKSHAFT	25 - 13
1H6	ALTERNATOR BRACKET	40 - 60	4H3	BEARING, BOGEY WHEEL	160 - 16
1H4	ALTERNATOR, SHEAVE AND BELT (185 AMP)	40 - 58	2C15	BEARING, CAM LOBE MOTOR	50 - 40
1H2	ALTERNATOR, SHEAVE AND BELT (95 AMP)	40 - 56	1B17	BEARING, FAN DRIVE	20 - 15
111	AMBER LAMP ASSEMBLY, REAR.....	40 - 81	2C1	BEARING, FINAL DRIVE.....	50 - 24
3K11	ANGLES, GRAIN TANK EXTENSION	125 - 32	1B4	BEARING, IDLER ARM, ROTARY SCREEN	20 - 2
3C15	ANTENNA, SPEAKERS AND RADIO	90 - 40	1C20	BEARING, MAIN	25 - 14
4D6	ARM, DUAL RANGE LOCKOUT.....	140 - 25	3K2	BEARING, TAILINGS ELEVATOR CONVEYOR	125 - 23
3I14	ARM, FRAME, PRECLEANER CHAFFER	120 - 10	1C20	BEARING, THRUST.....	25 - 14
4G18	ARM, FRONT, ADJUSTABLE IDLER ASSEMBLY.....	160 - 6	2B18	BEARING, TRANSMISSION	50 - 16
4G22	ARM, REAR	160 - 10	2B20	BEARING, TRANSMISSION PINION SHAFT	50 - 18
1D3	ARM, ROCKER	25 - 22	3H1	BEATER COVER	110 - 32
2C22	ARM, STEERING, CAM LOBE MOTOR.....	50 - 48	3G20	BEATER DRIVE BELT IDLER.....	110 - 26
3B24	ARMREST CONTROL PANEL, OPERATOR'S	90 - 24	3G22	BEATER DRIVE CONVERSION, DUAL SPEED	110 - 28
3C1	ARMREST PANEL, OPERATOR'S	90 - 26	3G24	BEATER GEARCASE AND SHEAVE	110 - 30
			3G12	BEATER HEAD, THRESHING.....	110 - 18
			3G12	BEATER, SHAFT AND DRIVE BELT	110 - 18
			3G18	BEATER, STRIPPER	110 - 24
			3G16	BEATER, STRIPPER, DRIVE IDLER	110 - 22
			4H10	BELT AND DRIVE WHEEL	160 - 24
			4F20	BELT GUIDE, UNLOADING AUGER DRIVE	150 - 38
			4I21	BELT ROUTING, L.H.	170 - 32
			4I23	BELT ROUTING, L.H.	170 - 34

ALPHABETICAL INDEX - CONTINUED

GRID		PAGE	GRID		PAGE
4I17	BELT ROUTING, R.H.	170 - 28	1B10	BRACKET, RADITOR MOUNTING	20 - 8
4I19	BELT ROUTING, R.H.	170 - 30	2G9	BRACKET, SINGLE ACCUMULATOR MOUNTING ONE HALF GALLON	70 - 32
3G12	BELT SET, BEATER SHAFT	110 - 18	2F15	BRACKET, SOLENOID CONTROL VALVE	70 - 12
1H6	BELT TENSIONER ALTERNATOR	40 - 60	4G3	BRACKET, TRANSDUCER MOUNTING, YIELD MAPPING	155 - 6
1H4	BELT, ALTERNATOR (185 AMP)	40 - 58	2E2	BRAKE CABLE SUPPORT BRACKET	60 - 11
1H2	BELT, ALTERNATOR (95 AMP)	40 - 56	2D22	BRAKE LINES, MASTER CYLINDER AND RESERVOIR	60 - 6
3G24	BELT, BEATER GEARCASE	110 - 30	2D24	BRAKE MASTER CYLINDER	60 - 8
4E6	BELT, CLEAN GRAIN ELEVATOR DRIVE TIGHTENER	140 - 50	2D18	BRAKE PEDAL AND SEAL, PARKING	60 - 2
4D17	BELT, CONVEYOR AUGERS, SIEVE AND CHAFFER	140 - 36	2D20	BRAKE PEDALS AND MASTER CYLINDER	60 - 4
4D4	BELT, DUAL RANGE CYLINDER DRIVE	140 - 22	2E3	BRAKE SHOES AND DRUM	60 - 12
4D11	BELT, DUAL RANGE CYLINDER DRIVE, INTERMEDIATE SHEAVE	140 - 30	4H8	BRAKE SHOES AND DRUM	160 - 22
3G22	BELT, DUAL SPEED DRIVE CONVERSION	110 - 28	2E1	BRAKE SLAVE CYLINDER	60 - 10
4C25	BELT, ELECTROMAGNETIC CLUTCH	140 - 17	3B11	BULB, INTERIOR CAB ROOF	90 - 10
1B14	BELT, ENGINE FAN	20 - 12	3C1	BULB, ARMREST CONTROL PANEL	90 - 26
3E5	BELT, FEEDER HOUSE DRIVE TIGHTENER	100 - 14	1H23	BULB, CAB ROOF LIGHTS	40 - 78
3E1	BELT, FEEDER HOUSE DRIVE TIGHTENER (FIXED SPEED)	100 - 10	1I5	BULB, CLEANING SHOE INSPECTION LIGHT	40 - 85
3F16	BELT, FRONT DRIVE SHAFT (FIXED SPEED WITH REVERSER)	100 - 50	3C11	BULB, CORNERPOST DISPLAY, R.H.	90 - 36
3D18	BELT, FRONT VARIABLE DRIVE SHEAVE	100 - 2	1I3	BULB, FLOODLIGHT SIDE FINDER	40 - 83
3K3	BELT, LOWER TAILINGS AUGER	125 - 24	2I15	BULB, GULLWING DOOR LIGHT, L.H.	80 - 14
3K5	BELT, LOWER TAILINGS TIGHTENER	125 - 26	1H24	BULB, L.H. FRONT TURN SIGNAL (AMBER)	40 - 79
3B24	BELT, OPERATOR'S ARMREST CONTROL PANEL	90 - 24	2I19	BULB, LEFT REAR CORNER PANEL	80 - 18
3B23	BELT, OPERATOR'S SEAT	90 - 23	2J22	BULB, LIGHT, REAR ENGINE COMPARTMENT	80 - 46
2G19	BELT, PICKUP / REEL DRIVE	70 - 42	3C13	BULB, OVERHEAD CONSOLE	90 - 38
1B4	BELT, ROTARY SCREEN DRIVE	20 - 2	1I2	BULB, REAR TURN AND TAIL LIGHTS	40 - 82
4D15	BELT, SECONDARY COUNTERSHAFT DRIVE	140 - 34	3B4	BULB, STUBBLE LIGHT, FRONT CAB	90 - 2
4D21	BELT, SEPARATOR FAN DRIVE	140 - 40	1H25	BULB, TURN SIGNAL	40 - 80
4D3	BELT, SINGLE RANGE CYLINDER DRIVE	140 - 21	1C10	BUSHING, CAMSHAFT	25 - 4
4B18	BELT, STRAW SPREADER	130 - 18	1C24	BUSHING, CAMSHAFT	25 - 18
3G18	BELT, STRIPPER BEATER	110 - 24	4G16	BUSHING, MAIN FRAME PIVOT	160 - 4
4F18	BELT, UNLOADING AUGER COUNTERSHAFT	150 - 36	1D9	BYPASS TUBES, OIL COOLER	25 - 29
3F14	BELT, UPPER DRIVE SHAFT (FIXED SPEED WITH REVERSER)	100 - 48	1D11	BYPASS VALVE, OIL FILTER	25 - 32
3F6	BELT, UPPER VARIABLE DRIVE COUNTERSHAFT	100 - 40	C		
4D1	BELT, VARIABLE SHEAVE, COUNTERSHAFT	140 - 18	3D6	CAB AIR FILTER AND HOUSING	95 - 6
3E3	BELT, VARIABLE SPEED TIGHTENER DRIVE	100 - 12	3B13	CAB DOOR AND GLASS	90 - 12
2G3	BI-DIRECTIONAL MODULE, SOLENOID CONTROL VALVE, REEL LIFT AND CYLINDER SPEED	70 - 26	3B15	CAB DOOR LATCH	90 - 14
4B12	BLADE, FINE CUT CHOPPER - PADDLED	130 - 12	3B13	CAB GLASS AND DOOR	90 - 12
4B18	BLADE, STRAW SPREADER	130 - 18	3B9	CAB INTERIOR TRIM PANELS	90 - 8
4B8	BLADE, TRI-ROD CHOPPER	130 - 8	3C20	CAB LANDING AND MIRROR (L.H.)	90 - 46
1G14	BLADE, WIPER (LONG)	40 - 42	3C22	CAB LANDING AND MIRROR (R.H.)	90 - 48
1B22	BLOCK, ENGINE COOLANT HEATER	20 - 20	1G4	CAB MAIN WIRING HARNESS	40 - 32
1C12	BLOCK, SHORT, ENGINE	25 - 6	3B21	CAB OPERATOR'S SEAT AND BACKREST	90 - 20
4H3	BOGEY WHEEL ASSEMBLY	160 - 16	3B7	CAB REAR AND SIDE SEALS	90 - 6
4H1	BOGEY WHEEL AXLES	160 - 14	3B11	CAB ROOF	90 - 10
1D1	BOLT, CYLINDER HEAD	25 - 20	1H23	CAB ROOF LIGHTS	40 - 78
3C9	BOOT, GEARSHIFT	90 - 34	3B4	CAB SUPPORT	90 - 2
1H4	BOSCH ALTERNATOR, SHEAVE AND BELT (185 AMP)	40 - 58	3B13	CAB, COMPLETE	90 - 12
1H2	BOSCH ALTERNATOR, SHEAVE AND BELT (95 AMP)	40 - 56	2E3	CABLE, BRAKE	60 - 12
4H4	BOX, GEARCASE, TRANSFER	160 - 18	4G11	CABLE, DATASTORE/COMPUTER	155 - 14
2J24	BOX, TOOL	80 - 48	2C3	CABLE, HYDROSTATIC DRIVE CONTROL	50 - 26
4D13	BRACKET, ADJUSTING, CYLINDER DRIVE	140 - 32	1F10	CABLE, WIRING	40 - 8
1H6	BRACKET, ALTERNATOR	40 - 60	1H2	CABLES, BATTERY	40 - 77
2E2	BRACKET, BRAKE CABLE SUPPORT	60 - 11	2C15	CAM LOBE MOTOR	50 - 40
4G1	BRACKET, DISPLAY, YIELD MAPPING	155 - 4	2C19	CAM, CARRIER, AND PISTON	50 - 44
3E22	BRACKET, FEEDER CONVEYOR	100 - 31	3D18	CAM, FRONT VARIABLE DRIVE	100 - 2
1H21	BRACKET, LOW SHAFT SPEED SENSORS	40 - 76	3G9	CAM, SPIKE TOOTH CONCAVE	110 - 14
4G3	BRACKET, MASS FLOW SENSOR, YIELD MAPPING	155 - 6	2B17	CAM, TRANSMISSION SHIFTER	50 - 14
4G5	BRACKET, MOISTURE SENSOR, YIELD MAPPING	155 - 8	1C24	CAMSHAFT	25 - 18
4F23	BRACKET, POSITION RECEIVER YIELD MAPPING	155 - 2	1C10	CAMSHAFT BUSHING	25 - 4
			1C24	CAMSHAFT FOLLOWER	25 - 18
			1D3	CAMSHAFT FOLLOWER	25 - 22
			1C24	CAMSHAFT GEAR	25 - 18

ALPHABETICAL INDEX - CONTINUED

GRID		PAGE	GRID		PAGE
1E24	CAP, EXHAUST PIPE	30 - 22	3J14	CLEAN GRAIN LOADING AUGER	125 - 10
4E16	CAP, GRAIN TANK CLEAN OUT CHUTE	150 - 8	3J12	CLEAN GRAIN LOADING AUGER HOUSING, UPPER	125 - 8
1C10	CAP, MAIN BEARING	25 - 4	3J8	CLEAN GRAIN LOWER AUGER	125 - 4
1B12	CAP, RADIATOR	20 - 10	3J10	CLEAN GRAIN LOWER CONVEYOR CHAIN	125 - 6
1D4	CAP, ROCKER ARM COVER	25 - 23	3J10	CLEAN GRAIN LOWER ELEVATOR	125 - 6
2C20	CAP, YOKE AND PIVOTS (STEERABLE MOTOR).....	50 - 46	4E16	CLEAN OUT CHUTE, GRAIN TANK	150 - 8
2C19	CARRIER, PISTON, AND CAM.....	50 - 44	1E22	CLEANER, AIR AND INTAKE TUBES	30 - 20
2D13	CASE DRAIN, HYDRAULIC LINES (FOUR WHEEL DRIVE)	50 - 64	3I7	CLEANING FAN AND SHROUDS.....	120 - 3
1G22	CENTRAL ELECTRONICS MODULE AND CIRCUIT BOARDS	40 - 50	4D21	CLEANING FAN DRIVE, SEPARATOR	140 - 40
2H16	CHAFF SPREADER CONTROL, CHECK VALVE, ROD AND KNOB.....	70 - 64	3I8	CLEANING FANS AND SHROUDS	120 - 4
4C3	CHAFF SPREADER DISC.....	130 - 28	4D19	CLEANING SHOE AND CONVEYOR AUGER PIVOT ARM DRIVE TIGHTENER.....	140 - 38
2H24	CHAFF SPREADER DRIVE	70 - 72	1I5	CLEANING SHOE INSPECTION LIGHT.....	40 - 85
2H18	CHAFF SPREADER LINES AND FITTINGS	70 - 66	3J3	CLEANOUT DOOR, SUPPLY AUGER, SHOE GRAIN ..	120 - 24
4C9	CHAFF SPREADER MOUNTING SUPPORT	130 - 34	1H8	CLUTCH ASSEMBLY (STARTER)	40 - 62
4C7	CHAFF SPREADER PAN AND SEALS	130 - 32	3D13	CLUTCH, COMPRESSOR.....	95 - 13
2G17	CHAFF SPREADER PUMP.....	70 - 40	3E17	CLUTCH, FEEDER HOUSE SHAFT.....	100 - 26
4C5	CHAFF SPREADER SHIELDS AND HANDLES.....	130 - 30	4C25	CLUTCH, HEADER ELECTROMAGNETIC.....	140 - 17
2H22	CHAFF SPREADER, HOSES, LINES AND MOTOR (DUAL MOTOR).....	70 - 70	3C5	COLD WEATHER START BUTTON	90 - 30
2H20	CHAFF SPREADER, LINES, HOSES, AND PUMP	70 - 68	1E14	COLD WEATHER STARTING AID	30 - 12
3I16	CHAFFER ELEMENT.....	120 - 12	1E20	COMPARTMENT, ENGINE	30 - 18
3I18	CHAFFER EXTENSION ELEMENT	120 - 14	3B13	COMPLETE CAB	90 - 12
3I20	CHAFFER FRAME	120 - 16	3D15	COMPRESSOR PARTS (650301-).....	95 - 15
3I14	CHAFFER FRAME ARMS, PRECLEANER	120 - 10	3D11	COMPRESSOR, AIR CONDITIONING, R134A	95 - 11
3I12	CHAFFER FRAME, PRECLEANER	120 - 8	3D13	COMPRESSOR, CLUTCH.....	95 - 13
4D17	CHAFFER, CONVEYOR AUGERS	140 - 36	1H14	CONCAVE ADJUSTING MOTOR	40 - 68
3I10	CHAFFER, PRECLEANING.....	120 - 6	1H15	CONCAVE INDICATOR.....	40 - 70
3C7	CHAIN LINK, FEEDER HOUSE FOOT CONTROL	90 - 32	3G7	CONCAVE, SPIKE-TOOTH	110 - 12
4E5	CHAIN TIGHTENER, UPPER TAILINGS DRIVE	140 - 49	3G9	CONCAVE, SPIKE-TOOTH	110 - 14
4G20	CHAIN, AIR SUSPENSION	160 - 8	2F11	CONDENSER, AIR CONDITIONING AND OIL COOLER	70 - 8
3C17	CHAIN, CAB PLATFORM SAFETY.....	90 - 42	1C9	CONDITIONER, COOLANT.....	25 - 2
3J10	CHAIN, CONVEYOR, CLEAN GRAIN LOWER ELEVATOR	125 - 6	1C16	CONNECTING RODS	25 - 10
3E21	CHAIN, FEEDER CONVEYOR	100 - 30	1F4	CONNECTORS, ELECTRICAL, WEATHERPACK	40 - 2
3F1	CHAIN, FEEDER CONVEYOR	100 - 34	1B21	CONNECTORS, ENGINE HEATER HOSE.....	20 - 19
3E22	CHAIN, FEEDER CONVEYOR DRIVE	100 - 31	1E8	CONNECTORS, FUEL INJECTION PUMP HOUSING ..	30 - 6
3K3	CHAIN, LOWER TAILINGS AUGER	125 - 24	1F12	CONNECTORS, SUPPLEMENTARY TERMINALS	40 - 10
3K2	CHAIN, TAILINGS ELEVATOR CONVEYOR	125 - 23	3C13	CONSOLE, OVERHEAD	90 - 38
3K7	CHAIN, UPPER TAILINGS AUGER	125 - 28	3B9	CONTAINER, TRASH	90 - 8
4F15	CHANNEL, CROSS AUGER	150 - 32	2H11	CONTOUR MASTER HYDRAULIC HOSES, (L.H.)	70 - 58
4E18	CHARGE HOUSING, VERTICAL UNLOADING AUGER	150 - 10	2F22	CONTOUR MASTER SOLENOID VALVE	70 - 20
2C9	CHARGE PUMP, HYDROSTATIC.....	50 - 32	2H14	CONTOUR MASTER TILT CYLINDER.....	70 - 61
2H20	CHECK VALVE, CHAFF SPREADER.....	70 - 68	2H15	CONTOUR MASTER TILT CYLINDER HOSES AND FITTINGS.....	70 - 63
2H16	CHECK VALVE, CHAFF SPREADER CONTROL	70 - 64	3E15	CONTOUR MASTER, FEEDER HOUSE SHELL, WEAR PLATES AND SEALS	100 - 24
2C7	CHECK VALVE, HYDROSTATIC PUMP	50 - 30	2C3	CONTROL CABLES, HYDROSTATIC DRIVE	50 - 26
4B14	CHOPPER HOUSING AND KNIFEBANK	130 - 14	3B24	CONTROL PANEL, OPERATOR'S ARMREST	90 - 24
4B12	CHOPPER ROTOR, FINE CUT PADDLED BLADE.....	130 - 12	3C1	CONTROL PANEL, OPERATOR'S ARMREST	90 - 26
4B16	CHOPPER TRANSPORT SPROCKETS.....	130 - 16	1E6	CONTROL UNIT, ELECTRONIC.....	30 - 4
4B10	CHOPPER, FINE CUT STRAIGHT BLADE	130 - 10	1H1	CONTROL UNIT, ELECTRONIC (ECU)	40 - 54
4B8	CHOPPER, TRI-ROD.....	130 - 8	2C23	CONTROL VALVE	50 - 50
4E16	CHUTE, GRAIN TANK CLEAN OUT	150 - 8	2F16	CONTROL VALVE MODULE, 6-STACK SOLENOID.....	70 - 14
3B24	CIGARETTE LIGHTER	90 - 24	2C10	CONTROL VALVE, HYDROSTATIC DRIVE DISPLACEMENT	50 - 34
1F13	CIGARETTE LIGHTER ADAPTER	40 - 12	2G5	CONTROL VALVE, SOLENOID, AUGER SWING	70 - 28
1G22	CIRCUIT BOARD, CENTRAL ELECTRONICS MODULE	40 - 50	2G5	CONTROL VALVE, SOLENOID, REEL FORE/AFT	70 - 28
3B24	CIRCUIT BOARD, OPERATOR'S ARMREST CONTROL PANEL.....	90 - 24	1E6	CONTROLLER, ENGINE.....	30 - 4
3C13	CIRCUIT BOARD, OVERHEAD CONSOLE	90 - 38	1F13	CONVENIENCE OUTLET, KIT	40 - 12
1G24	CIRCUIT BREAKER, RELAY PANEL	40 - 52	3G9	CONVERSION, RASP BAR TO SPIKE-TOOTH.....	110 - 14
3J10	CLEAN GRAIN CONVEYOR CHAIN.....	125 - 6	4D19	CONVEYOR AUGER AND CLEANING SHOE PIVOT ARM DRIVE TIGHTENER.....	140 - 38
4E6	CLEAN GRAIN ELEVATOR DRIVE TIGHTENER AND IDLER.....	140 - 50	4D17	CONVEYOR AUGERS, SIEVE AND CHAFFER DRIVE	140 - 36
3J16	CLEAN GRAIN ELEVATOR GEARCASE	125 - 12	3J10	CONVEYOR CHAIN, CLEAN GRAIN	125 - 6
3J6	CLEAN GRAIN ELEVATOR UPPER SHAFT	125 - 2	3E21	CONVEYOR, FEEDER HOUSE IDLER SHAFT.....	100 - 30
			1C9	COOLANT CONDITIONER, ENGINE	25 - 2
			1B22	COOLANT HEATER, ENGINE BLOCK.....	20 - 20

ALPHABETICAL INDEX - CONTINUED

GRID		PAGE	GRID		PAGE
1B12	COOLANT RECOVERY TANK	20 - 10	2G6	CYLINDER, HEADER LIFT, HYDRAULIC	70 - 29
1C9	COOLANT SCAN TEST KIT	25 - 2	2D20	CYLINDER, MASTER BRAKE	60 - 4
1D10	COOLER, ENGINE OIL	25 - 30	2E17	CYLINDER, STEERING	60 - 26
3F3	COOLER, OIL, FEEDER HOUSE GEARCASE	100 - 36	4H14	CYLINDER, TENSION	160 - 28
2119	CORNER SHEET, REAR, L.H.	80 - 18	4G22	CYLINDER, TENSION AND ATTACHING HARDWARE	160 - 10
3C11	CORNERPOST DISPLAY PANEL, R.H.	90 - 36	3G3	CYLINDER, THRESHING, RASP BAR	110 - 8
4D15	COUNTERSHAFT DRIVE, SECONDARY	140 - 34	3G5	CYLINDER, THRESHING, SPIKE TOOTH	110 - 10
4F18	COUNTERSHAFT DRIVE, UNLOADING AUGER	150 - 36	2H15	CYLINDER, TILT, HOSES AND FITTINGS, CONTOUR MASTER	70 - 63
4C23	COUNTERSHAFT GEARCASE, PRIMARY	140 - 14	4E22	CYLINDER, UNLOADING AUGER SWING	150 - 14
1B18	COUPLING WITH HUB, ENGINE GEARCASE	20 - 16			
3H18	COUPLING, GEARBOX AND SHAFT, MODULE	110 - 50		D	
2B8	COUPLINGS, AXLE	50 - 5	1E1	DAMPER, CRANKSHAFT	25 - 50
3H10	COVER AND FRAME, MODULE	110 - 42	4G11	DASTORE	155 - 14
3H1	COVER, BEATER	110 - 32	4G9	DASTORE MODULE	155 - 12
4F15	COVER, CROSS AUGER	150 - 32	4G11	DASTORE MODULE	155 - 14
1H6	COVER, FUEL INJECTION PUMP ACCESS	40 - 60	4G9	DASTORE W/DISPLAY	155 - 12
2C5	COVER, HYDROSTATIC PUMP	50 - 28	4G12	DECALS, DISPLAY, YIELD MONITOR	155 - 15
2C17	COVER, INNER - CAM LOBE MOTOR	50 - 42	4I11	DECALS, FRENCH CANADIAN	170 - 22
4G5	COVER, MOISTURE SENSOR, YIELD MAPPING	155 - 8	4I5	DECALS, FRONT AND REAR	170 - 16
4G7	COVER, MOISTURE SENSOR, YIELD MAPPING	155 - 10	4I9	DECALS, FRONT AND REAR TIRE	170 - 20
1D10	COVER, OIL COOLER	25 - 30	4I3	DECALS, L.H.	170 - 14
4F23	COVER, POSITION RECEIVER, YIELD MAPPING	155 - 2	4I12	DECALS, PORTUGUESE	170 - 23
1D4	COVER, ROCKER ARM	25 - 23	4I1	DECALS, R.H.	170 - 12
2I3	COVER, SEPARATOR FRAME	80 - 2	4I13	DECALS, ROMANIAN	170 - 24
1B20	COVER, STARTER RELAY	20 - 18	4I14	DECALS, RUSSIAN	170 - 25
1D18	COVER, THERMOSTAT	25 - 40	4I7	DECALS, SAFETY (RUBBER TRACK)	170 - 18
3F20	COVER, THRESHING CYLINDER	110 - 1	4H16	DECALS, SAFETY AND LOCATIONS	170 - 2
1C23	COVER, TIMING GEAR	25 - 17	4H18	DECALS, SAFETY AND LOCATIONS	170 - 4
4G7	COVER, WHEN MOISTURE SENSOR IS NOT USED YIELD MAPPING	155 - 10	4H20	DECALS, SAFETY AND LOCATIONS	170 - 6
3H8	CRANK OUT SYSTEM, MODULE	110 - 40	4H22	DECALS, SAFETY AND LOCATIONS	170 - 8
1B24	CRANKCASE, ENGINE OIL DRAIN	20 - 22	4H24	DECALS, SAFETY AND LOCATIONS	170 - 10
1C17	CRANKSHAFT	25 - 11	4I15	DECALS, SPANISH	170 - 26
1C23	CRANKSHAFT FRONT OIL SEAL	25 - 17	4I16	DECALS, UKRAINIAN	170 - 27
1C18	CRANKSHAFT KIT, UNDERSIZE	25 - 12	4G12	DECALS, YIELD MONITOR	155 - 15
1C21	CRANKSHAFT OIL SEAL AND HOUSING	25 - 15	1G18	DEFLECTOR AND SEAL ASSEMBLY	40 - 46
1E1	CRANKSHAFT PULLEY AND DAMPERS	25 - 50	4G3	DEFLECTOR DOOR, MASS FLOW SENSOR, YIELD MAPPING	155 - 6
4F11	CROSS AUGER BEARING PLATE, L.H.	150 - 28	4C7	DEFLECTOR, CHAFF SPREADER	130 - 32
4F15	CROSS AUGER COVERS AND CHANNEL	150 - 32	3F23	DEFLECTOR, CYLINDER DOOR, SEPARATOR (GRAIN AND RICE)	110 - 4
4F13	CROSS AUGER, GRAIN TANK	150 - 30	1E20	DEFLECTOR, ENGINE COMPARTMENT	30 - 18
4E14	CURTAIN, GRAIN TANK	150 - 6	3E13	DEFLECTOR, FEEDER HOUSE FRAME	100 - 22
4B22	CURTAIN, LOWER, STRAW SPREADER	130 - 22	2B22	DIFFERENTIAL SHAFTS AND GEARS	50 - 20
4B20	CURTAIN, SPREADER	130 - 20	1C10	DIPSTICK TUBE, ENGINE BLOCK	25 - 4
4B24	CURTAIN, SPREADER, UPPER	130 - 24	4C23	DIPSTICK, COUNTERSHAFT GEARCASE	140 - 14
3B17	CUSHION, SEAT, PASSENGER	90 - 16	1D15	DIPSTICK, ENGINE OIL	25 - 36
1C10	CYLINDER BLOCK FITTINGS	25 - 4	4C20	DIPSTICK, MAIN GEARCASE	140 - 10
3F20	CYLINDER COVER, THRESHING	110 - 1	3D20	DIPSTICK, REVERSER GEAR BOX	100 - 4
3G1	CYLINDER DOOR (CORN)	110 - 6	4C3	DISC, CHAFF SPREADER	130 - 28
3F23	CYLINDER DOOR, SEPARATOR (GRAIN AND RICE)	110 - 4	2C10	DISPLACEMENT CONTROL VALVE	50 - 34
4D4	CYLINDER DRIVE GEARCASE, DUAL-RANGE	140 - 22	4G1	DISPLAY BRACKET, YIELD MAPPING	155 - 4
4D9	CYLINDER DRIVE INTERMEDIATE SHAFT MOUNTING, DUAL-RANGE	140 - 28	4G12	DISPLAY DECALS, YIELD MONITOR	155 - 15
4D11	CYLINDER DRIVE INTERMEDIATE SHEAVE, DUAL-RANGE	140 - 30	3C11	DISPLAY PANEL, R.H. CORNERPOST	90 - 36
4D7	CYLINDER DRIVE TIGHTENER, DUAL-RANGE	140 - 26	4G9	DISPLAY W/DASTORE	155 - 12
1D1	CYLINDER HEAD	25 - 20	4G1	DISPLAY, YIELD MAPPING	155 - 4
1D24	CYLINDER HEAD GASKET KIT	25 - 48	3B15	DOOR LATCH, CAB	90 - 14
1C16	CYLINDER LINERS	25 - 10	1G4	DOOR LIGHT SWITCH, MAIN CAB	40 - 32
2G3	CYLINDER SPEED AND REEL LIFT, SOLENOID CONTROL VALVE	70 - 26	3D6	DOOR, CAB AIR FILTER	95 - 6
2G15	CYLINDER SPEED HYDRAULIC HOSES	70 - 38	3B13	DOOR, CAB AND GLASS	90 - 12
2E1	CYLINDER, BRAKE SLAVE	60 - 10	2I13	DOOR, CAB, LEFT FRONT	80 - 12
2D24	CYLINDER, BRAKE, MASTER	60 - 8	3J8	DOOR, CLEAN GRAIN LOWER AUGER	125 - 4
2H14	CYLINDER, CONTOUR MASTER, TILT	70 - 61	4D1	DOOR, COUNTERSHAFT DRIVE	140 - 18
2I15	CYLINDER, GAS, GULLWING DOOR L.H.	80 - 14	3G1	DOOR, CYLINDER (CORN)	110 - 6
4F16	CYLINDER, GRAIN TANK UNLOADING DRIVE	150 - 34			

ALPHABETICAL INDEX - CONTINUED

<i>GRID</i>		<i>PAGE</i>	<i>GRID</i>		<i>PAGE</i>
3F23	DOOR, CYLINDER, SEPARATOR (GRAIN AND RICE).....	110 - 4	3H24	DRIVE, ENGINE GEARBOX TO MODULE	110 - 56
1E18	DOOR, ENGINE PLATFORM	30 - 16	3I1	DRIVE, ENGINE GEARBOX TO MODULE	110 - 58
3E13	DOOR, FEEDER HOUSE FRAME	100 - 22	4E1	DRIVE, FAN, SPEED CONTROL SHEAVE LINKAGE....	140 - 44
4E10	DOOR, GRAIN TANK	150 - 2	2C12	DRIVE, HYDROSTATIC MOTOR	50 - 36
2I15	DOOR, GULLWING, L.H.....	80 - 14	2D3	DRIVE, HYDROSTATIC OIL HOSES, UPPER (FOUR WHEEL DRIVE)	50 - 54
2I23	DOOR, GULLWING, R.H.	80 - 22	2D9	DRIVE, HYDROSTATIC, LOWER OIL LINES (FOUR WHEEL DRIVE)	50 - 60
4F9	DOOR, HORIZONTAL UNLOADING.....	150 - 26	2D1	DRIVE, HYDROSTATIC, LOWER OIL LINES (TWO WHEEL DRIVE)	50 - 52
4F5	DOOR, HORIZONTAL UNLOADING AUGER HOUSING	150 - 22	2H1	DRIVE, REEL, HYDRAULIC LINES AND HOSES, L.H.....	70 - 48
2I17	DOOR, LEFT REAR GULLWING	80 - 16	1B3	DRIVE, ROTARY SCREEN.....	20 - 1
4G3	DOOR, MASS FLOW SENSOR DEFLECTOR, YIELD MAPPING	155 - 6	4D15	DRIVE, SECONDARY COUNTERSHAFT.....	140 - 34
3K1	DOOR, MATERIAL SENSOR	125 - 22	4D3	DRIVE, SINGLE RANGE CYLINDER	140 - 21
2J1	DOOR, RADIATOR	80 - 24	3I3	DRIVE, STRAW CHOPPER	110 - 60
2J14	DOOR, REAR HOOD.....	80 - 38	3I6	DRIVE, STRAW SPREADER	120 - 2
2J12	DOOR, REAR HOOD ACCESS	80 - 36	4H8	DRUM AND SHOES, BRAKE	160 - 22
1B6	DOOR, ROTARY SCREEN.....	20 - 4	2E3	DRUM, BRAKE.....	60 - 12
3J3	DOOR, SHOE GRAIN SUPPLY AUGER	120 - 24	3E21	DRUM, FEEDER CONVEYOR IDLER SHAFT.....	100 - 30
4B7	DOOR, SLIDE, LOWER STRAW CHOPPER	130 - 6	3D9	DRYER, AIR CONDITIONER	95 - 9
3F21	DOOR, STONE TRAP, FEEDER HOUSE	110 - 2	4D6	DUAL RANGE LOCKOUT ARM	140 - 25
4B7	DOOR, STRAW CHOPPER, LOWER.....	130 - 6	3G22	DUAL SPEED BEATER DRIVE CONVERSION,	110 - 28
4C1	DOOR, STRAW SPREADER.....	130 - 26	2B11	DUAL WHEELS, WIDE SPACED	50 - 8
4E24	DOOR, UNLOADING AUGER SWIVEL	150 - 16	4D13	DUAL-RANGE CYLINDER DRIVE ADJUSTING BRACKET.....	140 - 32
4B5	DOOR, UPPER REAR, STRAW CHOPPER	130 - 4	4D4	DUAL-RANGE CYLINDER DRIVE GEARCASE.....	140 - 22
1B22	DRAIN PLUG, ENGINE BLOCK COOLANT.....	20 - 20	4D9	DUAL-RANGE CYLINDER DRIVE INTERMEDIATE SHAFT MOUNTING.....	140 - 28
4C14	DRAIN PLUG, ENGINE GEARCASE	140 - 4	4D11	DUAL-RANGE CYLINDER DRIVE INTERMEDIATE SHEAVE.....	140 - 30
4C16	DRAIN PLUG, GEARCASE	140 - 6	4D7	DUAL-RANGE CYLINDER DRIVE TIGHTENER	140 - 26
2C12	DRAIN PLUG, HYDROSTATIC DRIVE MOTOR	50 - 36	3D7	DUCTS, HEATER AND AIR CONDITIONING	95 - 7
2C14	DRAIN PLUG, HYDROSTATIC MOTOR VALVE	50 - 38	3F12	DUST FAN, FEEDER HOUSE, L.H.	100 - 46
1D13	DRAIN PLUG, OIL PAN.....	25 - 34	3E23	DUST FAN, FEEDER HOUSE, R.H.....	100 - 32
2F22	DRAIN PLUG, RELIEF VALVE MODULE.....	70 - 20			
1D18	DRAIN VALVE, CYLINDER HEAD	25 - 40		E	
1C10	DRAIN VALVE, ENGINE BLOCK	25 - 4	1E6	E.C.U.	30 - 4
1E16	DRAIN VALVE, FUEL	30 - 14	1G22	ECU MODULE	40 - 50
1E11	DRAIN VALVE, FUEL COOLER	30 - 9	1H1	ECU, ELECTRONIC CONTROL UNIT	40 - 54
1D13	DRAIN VALVE, OIL PAN.....	25 - 34	1F6	ELECTRICAL CONNECTOR SERVICE KIT.....	40 - 4
1B12	DRAIN VALVE, RADIATOR.....	20 - 10	1F8	ELECTRICAL CONNECTOR SERVICE KIT.....	40 - 6
4F20	DRIVE BELT GUIDE, UNLOADING AUGER	150 - 38	1F4	ELECTRICAL TERMINALS AND CONNECTORS, WEATHERPACK	40 - 2
3G20	DRIVE BELT, BEATER, IDLER.....	110 - 26	4C25	ELECTROMAGNETIC HEADER CLUTCH	140 - 17
4E5	DRIVE CHAIN TIGHTENER, UPPER TAILINGS	140 - 49	1E6	ELECTRONIC CONTROL UNIT	30 - 4
3G22	DRIVE CONVERSION, BEATER, DUAL SPEED.....	110 - 28	1H1	ELECTRONIC CONTROL UNIT (ECU).....	40 - 54
1C17	DRIVE GEAR, OIL PUMP	25 - 11	1E6	ELECTRONIC FUEL INJECTION PUMP	30 - 4
4E6	DRIVE IDLER, CLEAN GRAIN ELEVATOR	140 - 50	1G22	ELECTRONICS MODULE, CENTRAL AND CIRCUIT BOARDS	40 - 50
3G16	DRIVE IDLER, STRIPPER BEATER.....	110 - 22	3I16	ELEMENT, CHAFFER	120 - 12
2B24	DRIVE SHAFT, FINAL DRIVE.....	50 - 22	3I18	ELEMENT, CHAFFER EXTENSION	120 - 14
3H20	DRIVE SHAFT, GEARCASE, L.H.	110 - 52	3I22	ELEMENT, SIEVE	120 - 18
2B8	DRIVE SHAFTS	50 - 5	4E6	ELEVATOR DRIVE IDLER, CLEAN GRAIN	140 - 50
3E7	DRIVE SHIELD WITHOUT AIRFLOW.....	100 - 16	4E6	ELEVATOR DRIVE TIGHTENER, CLEAN GRAIN.....	140 - 50
3E9	DRIVE SHIELD, L.H., WITH AIRFLOW	100 - 18	3J10	ELEVATOR, LOWER, CLEAN GRAIN	125 - 6
3E11	DRIVE SHIELD, R.H.	100 - 20	3J24	ELEVATOR, TAILINGS	125 - 20
2J3	DRIVE SHIELD, R.H. REAR	80 - 27	2J22	ENGINE ACCESS PLATFORM.....	80 - 46
4E6	DRIVE TIGHTENER, CLEAN GRAIN ELEVATOR.....	140 - 50	1E20	ENGINE COMPARTMENT.....	30 - 18
3E5	DRIVE TIGHTENER, FEEDER HOUSE	100 - 14	2J18	ENGINE COMPARTMENT.....	80 - 42
3E1	DRIVE TIGHTENER, FIXED SPEED FEEDER HOUSE.....	100 - 10	1E6	ENGINE CONTROLLER	30 - 4
4D19	DRIVE TIGHTENER, PIVOT ARM, CLEANING SHOE	140 - 38	1B24	ENGINE CRANKCASE OIL DRAIN.....	20 - 22
3E3	DRIVE TIGHTENER, VARIABLE SPEED	100 - 12	1B16	ENGINE DRIVE	20 - 14
4H10	DRIVE WHEEL AND BELT	160 - 24	1B14	ENGINE FAN DRIVES.....	20 - 12
2B9	DRIVE WHEELS	50 - 6	1C22	ENGINE FLYWHEEL	25 - 16
2B10	DRIVE WHEELS, HIGH FLOATATION.....	50 - 7			
2G19	DRIVE, BELT PICKUP / REEL PUMP MOUNTING SHEAVE	70 - 42			
4D17	DRIVE, CONVEYOR AUGERS, CHAFFER	140 - 36			
4F18	DRIVE, COUNTERSHAFT, UNLOADING AUGER.....	150 - 36			
1B16	DRIVE, ENGINE.....	20 - 14			
1B14	DRIVE, ENGINE FAN	20 - 12			

ALPHABETICAL INDEX - CONTINUED

GRID		PAGE	GRID		PAGE
3H24	ENGINE GEARBOX TO MODULE DRIVES	110 - 56	3C7	FEEDER HOUSE REVERSER FOOT CONTROL	90 - 32
311	ENGINE GEARBOX TO MODULE DRIVES	110 - 58	3E15	FEEDER HOUSE SHELL - CONTOUR MASTER	100 - 24
1B18	ENGINE GEARCASE COUPLING WITH HUB	20 - 16	3F14	FEEDER HOUSE UPPER DRIVE SHAFT, (FIXED SPEED WITH REVERSER)	100 - 48
4C12	ENGINE GEARCASE OIL FILTER ASSEMBLY	140 - 2	3E17	FEEDER HOUSE UPPER SHAFT	100 - 26
4C14	ENGINE GEARCASE PRESSURE REGULATOR	140 - 4	3F5	FEEDER HOUSE VARIABLE DRIVE HYDRAULIC HOSE	100 - 38
4C20	ENGINE GEARCASE, SEPARATOR AND PUMP	140 - 10	3E15	FEEDER HOUSE WEAR PLATES - CONTOUR MASTER	100 - 24
1B21	ENGINE HEATER HOSE CONNECTORS	20 - 19	3F21	FEEDER HOUSE/SEPARATOR SEAL	110 - 2
1C1	ENGINE INTERCOOLER	20 - 24	3F6	FEEDER HOUSE, UPPER COUNTERSHAFT VARIABLE DRIVE	100 - 40
1C3	ENGINE MOUNTS AND REAR SUPPORT	20 - 26	3B17	FIELD OFFICE	90 - 16
1C8	ENGINE OIL (TORQ-GARD PLUS-50)	25 - 1	3H14	FILLER PLATE, MODULE GRATE ASSEMBLY	110 - 46
1D10	ENGINE OIL COOLER	25 - 30	1E22	FILTER, AIR CLEANER	30 - 20
1D15	ENGINE OIL DIPSTICK	25 - 36	3D4	FILTER, AIR, RECIRCULATION	95 - 4
1D11	ENGINE OIL FILTER	25 - 32	3D6	FILTER, CAB AIR	95 - 6
1D6	ENGINE OIL PUMP	25 - 26	1D11	FILTER, ENGINE OIL	25 - 32
1D8	ENGINE OIL PUMP INTAKE	25 - 28	3D10	FILTER, EVAPORATOR HEATER	95 - 10
1C14	ENGINE OVERHAUL KIT	25 - 8	1E12	FILTER, FUEL	30 - 10
1E18	ENGINE PLATFORM	30 - 16	1E16	FILTER, FUEL PUMP	30 - 14
1D24	ENGINE REBUILD GASKET KIT	25 - 48	2C9	FILTER, HYDROSTATIC CHARGE PUMP	50 - 32
1H20	ENGINE SPEED SENSOR	40 - 75	2H13	FILTER, MAIN HYDRAULIC	70 - 60
1F15	ENGINE WIRING HARNESS	40 - 14	4C12	FILTER, OIL, ENGINE GEARCASE	140 - 2
1E15	ETHER AID	30 - 13	1C23	FILTER, WATER PUMP (WEEP HOLE)	25 - 17
3C5	ETHER START BUTTON	90 - 30	1G12	FILTER, WINDSHIELD WASHER	40 - 40
3D10	EVAPORATOR HEATER, AIR CONDITIONER	95 - 10	2C1	FINAL DRIVE	50 - 24
1D23	EXHAUST MANIFOLD AND HEAT SHIELD	25 - 46	4H6	FINAL DRIVE MOUNTING	160 - 20
1E24	EXHAUST PIPE AND MUFFLER	30 - 22	2B24	FINAL DRIVE SHAFT	50 - 22
1D1	EXHAUST VALVES AND SHIELDS	25 - 20	2D14	FINAL DRIVE SHAFT SHIELDS, SINGLE REDUCTION	50 - 65
1B22	EXTENSION CORD, ENGINE BLOCK COOLANT HEATER	20 - 20	4B10	FINE CUT ROTOR CHOPPER (STRAIGHT BLADE)	130 - 10
3118	EXTENSION ELEMENT, CHAFFER	120 - 14	3H14	FINGER BAR, MODULE GRATE ASSEMBLY	110 - 46
2B7	EXTENSION, AXLE	50 - 4	3G11	FINGER GRATE, SPIKE-TOOTH	110 - 16
3K9	EXTENSION, GRAIN TANK	125 - 30	3F12	FINGER, FEEDER HOUSE DUST FAN, L.H.	100 - 46
3C19	EXTENSION, LADDER ASSEMBLY	90 - 45	3E23	FINGER, FEEDER HOUSE DUST FAN, R.H.	100 - 32
			3I18	FINGER, PLASTIC, CHAFFER	120 - 14
	F		3I12	FINGER, PRECLEANER CHAFFER	120 - 8
318	FAN AND SHROUD, CLEANING	120 - 4	1C10	FITTINGS, CYLINDER BLOCK	25 - 4
1B17	FAN DRIVE	20 - 15	1E15	FITTINGS, ETHER AID	30 - 13
4D23	FAN DRIVE SPEED CONTROL LINKAGE	140 - 42	1E16	FITTINGS, FUEL TANK	30 - 14
4E1	FAN DRIVE SPEED CONTROL SHEAVE LINKAGE	140 - 44	3D22	FITTINGS, REVERSER GEAR BOX (HI CAPACITY)	100 - 6
4D21	FAN DRIVE, CLEANING, SEPARATOR	140 - 40	2H15	FITTINGS, TILT CYLINDER, CONTOUR MASTER	70 - 63
1H19	FAN DRIVE, SEPARATOR, ADJUSTING MOTOR	40 - 74	2B5	FIXED REAR AXLE	50 - 2
1B19	FAN PULLEY, AIR CONDITIONER COMPRESSOR	20 - 17	2E23	FIXED REAR AXLE STEERING TIE RODS	60 - 33
317	FAN, CLEANING	120 - 3	3E1	FIXED SPEED FEEDER HOUSE DRIVE TIGHTENER ..	100 - 10
3F12	FAN, DUST, FEEDER HOUSE, L.H.	100 - 46	1I5	FLOODLIGHT, CLEANING SHOE INSPECTION	40 - 85
1B14	FAN, ENGINE	20 - 12	2I19	FLOODLIGHT, LEFT REAR CORNER PANEL	80 - 18
3E23	FAN, FEEDER HOUSE DUST, R.H.	100 - 32	1I3	FLOODLIGHT, SIDE FINDER	40 - 83
3D2	FAN, HEATING AND AIR CONDITIONER	95 - 2	3B9	FLOOR MAT	90 - 8
3D4	FAN, HEATING AND AIR CONDITIONING	95 - 4	3B7	FLOOR PANELS	90 - 6
3E22	FEEDER CONVEYOR BRACKET	100 - 31	3E19	FLOOR, FEEDER HOUSE	100 - 28
3E22	FEEDER CONVEYOR DRIVE CHAIN	100 - 31	3F8	FLOOR, FEEDER HOUSE RETURN	100 - 42
3F1	FEEDER CONVEYOR DRIVE CHAIN	100 - 34	2G21	FLOW CONTROL VALVE, REEL DRIVE	70 - 44
3F1	FEEDER CONVEYOR DRIVE IDLER BRACKET	100 - 34	4G3	FLOW SENSOR, MASS, YIELD MAPPING	155 - 6
3E22	FEEDER CONVEYOR IDLER	100 - 31	1C22	FLYWHEEL	25 - 16
3E21	FEEDER CONVEYOR IDLER SHAFT	100 - 30	1C24	FOLLOWER, CAMSHAFT	25 - 18
1H10	FEEDER HOUSE BACKSHAFT SPEED SENSOR	40 - 64	1D3	FOLLOWER, CAMSHAFT	25 - 22
3E5	FEEDER HOUSE DRIVE TIGHTENER	100 - 14	3C7	FOOT PEDAL, FEEDER HOUSE REVERSER	90 - 32
3E1	FEEDER HOUSE DRIVE TIGHTENER (FIXED SPEED)	100 - 10	3H10	FRAME AND COVERS, MODULE	110 - 42
3F12	FEEDER HOUSE DUST FAN, L.H.	100 - 46	3I14	FRAME ARMS, PRECLEANER CHAFFER	120 - 10
3E23	FEEDER HOUSE DUST FAN, R.H.	100 - 32	4G14	FRAME MOUNTING, TRACK	160 - 2
3E19	FEEDER HOUSE FLOOR	100 - 28	3I20	FRAME, CHAFFER	120 - 16
3E13	FEEDER HOUSE FRAME	100 - 22	3D2	FRAME, FAN HEATER AND AIR CONDITIONER	95 - 2
3F16	FEEDER HOUSE FRONT DRIVE SHAFT (FIXED SPEED WITH REVERSER)	100 - 50	3E13	FRAME, FEEDER HOUSE	100 - 22
3F3	FEEDER HOUSE GEARCASE OIL COOLER	100 - 36	3E15	FRAME, FEEDER HOUSE - CONTOUR MASTER	100 - 24
3F10	FEEDER HOUSE POSITION SENSOR	100 - 44			

ALPHABETICAL INDEX - CONTINUED

<i>GRID</i>		<i>PAGE</i>
4G16	FRAME, MAIN, PIVOT BUSHINGS.....	160 -4
2I3	FRAME, SEPARATOR.....	80 -2
4G14	FRAME, SHIPPING.....	160 -2
3I24	FRAME, SIEVE.....	120 -20
4B22	FRAME, STRAW SPREADER.....	130 -22
4I11	FRENCH CANADIAN DECALS AND LABELS.....	170 -22
4G18	FRONT ARM AND ADJUSTABLE IDLER ASSEMBLY ..	160 -6
3F16	FRONT DRIVE SHAFT AND MOUNTINGS (FIXED SPEED WITH REVERSER).....	100 -50
1C23	FRONT OIL SEAL.....	25 -17
2I21	FRONT PANEL, RIGHT.....	80 -20
2I9	FRONT SHIELD ASSEMBLY, RIGHT SIDE.....	80 -8
3D18	FRONT VARIABLE DRIVE SHEAVE.....	100 -2
1D18	FRONT WATER MANIFOLD.....	25 -40
1E12	FUEL CHECK VALVE.....	30 -10
1E11	FUEL COOLER.....	30 -9
1E12	FUEL FILTER.....	30 -10
1E16	FUEL GAUGE.....	30 -14
1E4	FUEL INJECTION LINES.....	30 -2
1E10	FUEL INJECTION NOZZLE.....	30 -8
1E4	FUEL INJECTION NOZZLES.....	30 -2
1E6	FUEL INJECTION PUMP.....	30 -4
1H6	FUEL INJECTION PUMP ACCESS COVER.....	40 -60
1E8	FUEL INJECTION PUMP HOUSING CONNECTORS....	30 -6
1E4	FUEL LEAK-OFF LINES.....	30 -2
1E6	FUEL LEAK-OFF LINES.....	30 -4
1E16	FUEL PUMP.....	30 -14
1E16	FUEL SENDER.....	30 -14
1E6	FUEL SHUT-OFF SOLENOID.....	30 -4
2J20	FUEL TANK STEPS AND MOUNTING BRACKETS.....	80 -44
1E16	FUEL TANK, SUPPORTS, AND FITTINGS.....	30 -14
1E9	FUEL TRANSFER PUMP.....	30 -7

G

1D4	GASKET ADHESIVE, ROCKER ARM COVER.....	25 -23
1D24	GASKET KIT, CYLINDER HEAD.....	25 -48
1D24	GASKET KIT, ENGINE REBUILD.....	25 -48
1D24	GASKET KIT, SHORT BLOCK.....	25 -48
1D1	GASKET, CYLINDER HEAD.....	25 -20
1D23	GASKET, EXHAUST MANIFOLD.....	25 -46
1D20	GASKET, INTAKE MANIFOLD.....	25 -42
1D11	GASKET, OIL FILTER HOUSING.....	25 -32
1D13	GASKET, OIL PAN.....	25 -34
1D6	GASKET, OIL PUMP.....	25 -26
1D8	GASKET, OIL PUMP INTAKE.....	25 -28
1C21	GASKET, REAR OIL SEAL.....	25 -15
1D4	GASKET, ROCKER ARM COVER.....	25 -23
1D18	GASKET, THERMOSTAT.....	25 -40
1C23	GASKET, TIMING GEAR COVER.....	25 -17
1D21	GASKET, TURBOCHARGER.....	25 -44
1D18	GASKET, WATER MANIFOLD.....	25 -40
1D16	GASKET, WATER PUMP.....	25 -38
2G13	GAUGE, ACCUMULATOR PRESSURE.....	70 -36
3D20	GEAR BOX, REVERSER (HI CAPACITY).....	100 -4
3D23	GEAR BOX, REVERSER (STANDARD).....	100 -8
1C24	GEAR, CAMSHAFT.....	25 -18
2B22	GEAR, DIFFERENTIAL.....	50 -20
2C1	GEAR, FINAL DRIVE.....	50 -24
1E6	GEAR, INJECTION PUMP.....	30 -4
2F9	GEAR, MAIN HYDRAULIC PUMP.....	70 -6
1C17	GEAR, OIL PUMP DRIVE.....	25 -11
1D6	GEAR, OIL PUMP DRIVE.....	25 -26
1C22	GEAR, RING, FLYWHEEL.....	25 -16
3J1	GEAR, SHOE GRAIN AUGER.....	120 -22
4B18	GEAR, STRAW SPREADER.....	130 -18

<i>GRID</i>		<i>PAGE</i>
2B18	GEAR, TRANSMISSION.....	50 -16
1C18	GEAR, UNDERSIZE CRANKSHAFT.....	25 -12
1C19	GEAR, UNDERSIZE MAIN BEARING CRANKSHAFT....	25 -13
3H24	GEARBOX, ENGINE TO MODULE DRIVES.....	110 -56
3I1	GEARBOX, ENGINE TO MODULE DRIVES.....	110 -58
3H18	GEARBOX, SHAFT AND COUPLING, MODULE.....	110 -50
3G24	GEARCASE AND SHEAVE, BEATER.....	110 -30
4C23	GEARCASE COUNTERSHAFT.....	140 -14
1B18	GEARCASE COUPLING, ENGINE.....	20 -16
3H20	GEARCASE MODULE, L.H.....	110 -52
3H22	GEARCASE MODULE, R.H.....	110 -54
4C22	GEARCASE MOUNTING.....	140 -13
3J16	GEARCASE, CLEAN GRAIN ELEVATOR.....	125 -12
4D4	GEARCASE, DUAL-RANGE CYLINDER DRIVE.....	140 -22
4C20	GEARCASE, ENGINE.....	140 -10
4C18	GEARCASE, ENGINE, MAIN.....	140 -8
4F4	GEARCASE, HORIZONTAL UNLOADING AUGER.....	150 -21
4C16	GEARCASE, MAIN.....	140 -6
4H4	GEARCASE, TRANSFER.....	160 -18
4E16	GEARCASE, VERTICAL AUGER LOWER.....	150 -8
2B20	GEARS, TRANSMISSION PINION SHAFT.....	50 -18
3C9	GEARSHIFT LEVER AND LINKAGE.....	90 -34
3B13	GLASS, CAB AND DOOR.....	90 -12
3C11	GRAIN LOSS DISPLAY, R.H. CORNERPOST.....	90 -36
1G17	GRAIN LOSS MONITOR.....	40 -45
3G14	GRAIN SHAKER PAN.....	110 -20
4E14	GRAIN TANK AND CURTAINS.....	150 -6
4E12	GRAIN TANK BASE.....	150 -4
4F13	GRAIN TANK CROSS AUGERS.....	150 -30
3K9	GRAIN TANK EXTENSIONS.....	125 -30
3K11	GRAIN TANK EXTENSIONS SUPPORT AND ANGLES	125 -32
1G21	GRAIN TANK FULL BIN SENSOR.....	40 -49
4E10	GRAIN TANK TOP.....	150 -2
4F16	GRAIN TANK UNLOADING DRIVE CYLINDER.....	150 -34
4E18	GRAIN TANK VERTICAL UNLOADING AUGER.....	150 -10
1G20	GRAIN TANK WIRING HARNESS.....	40 -48
3H14	GRATE, FINGER BAR.....	110 -46
3G11	GRATE, FINGER, SPIKE-TOOTH.....	110 -16
3G9	GRATE, SPIKE TOOTH CONCAVE.....	110 -14
3C15	GRILLE, RADIO SPEAKER.....	90 -40
3B11	GRILLE, SPEAKER.....	90 -10
2J4	GRIP, LADDER, REAR LANDING.....	80 -28
2J6	GRIP, LADDER, REAR LANDING.....	80 -30
3B21	GRIP, OPERATOR'S SEAT RECLINER ARM.....	90 -20
3F1	GUIDE, CHAIN SUPPORT, FEEDER CONVEYOR.....	100 -34
2I15	GULLWING DOOR, L.H.....	80 -14
2I17	GULLWING DOOR, LEFT REAR.....	80 -16
2I23	GULLWING DOOR, R.H.....	80 -22

H

3C22	HAND RAIL, R.H.....	90 -48
3B7	HANDLE, CAB.....	90 -6
3B15	HANDLE, CAB DOOR.....	90 -14
4C5	HANDLE, CHAFF SPREADER.....	130 -30
3I16	HANDLE, CHAFFER ELEMENT.....	120 -12
3J16	HANDLE, CLEAN GRAIN ELEVATOR GEARCASE.....	125 -12
3G1	HANDLE, CYLINDER DOOR (CORN).....	110 -6
3F23	HANDLE, CYLINDER DOOR, SPEARATOR (GRAIN AND RICE).....	110 -4
3E19	HANDLE, FEEDER HOUSE LATCH.....	100 -28
2I15	HANDLE, GULLWING DOOR, L.H.....	80 -14
3B24	HANDLE, OPERATORS CONTROL PANEL.....	90 -24
3J3	HANDLE, SHOE GRAIN SUPPLY AUGER.....	120 -24
3I22	HANDLE, SIEVE ELEMENT.....	120 -18
2J18	HANDRAIL, ENGINE COMPARTMENT.....	80 -42

ALPHABETICAL INDEX - CONTINUED

GRID		PAGE	GRID		PAGE
3C20	HANDRAIL, L.H.....	90 - 46	2G23	HOSES AND LINES, HYDRAULIC, REEL PUMP	70 - 46
3C17	HANDRAIL, PLATFORM EXTENSIONS	90 - 42	2D5	HOSES AND LINES, HYDROSTATIC OIL COOLER.....	50 - 56
2J1	HANDRAIL, RADIATOR DOOR.....	80 - 24	2H1	HOSES AND LINES, REEL DRIVE, HYDRAULIC, L.H.....	70 - 48
3C24	HARDWARE KIT, CAB	90 - 50	2H9	HOSES AND LINES, REEL LIFT	70 - 56
1G6	HARNESS, ARMREST WIRING	40 - 34	2E9	HOSES AND LINES, STEERING, FRONT	60 - 18
4G9	HARNESS, DATASTORE	155 - 12	2E15	HOSES AND LINES, STEERING, REAR	60 - 24
1G4	HARNESS, MAIN CAB WIRING	40 - 32	2F13	HOSES AND LINES, WET CLUTCH OIL COOLER, HYDRAULIC.....	70 - 10
1F17	HARNESS, MAIN WIRING, L.H.	40 - 17	1B12	HOSES RADIATOR	20 - 10
1F20	HARNESS, MAIN WIRING, L.H.	40 - 20	3D12	HOSES, AIR CONDITIONER COMPRESSOR.....	95 - 12
4G5	HARNESS, MOISTURE SENSOR MOTOR, YIELD MAPPING	155 - 8	2D11	HOSES, CONTROL VALVE TO CAM LOBE MOTOR (FOUR WHEEL DRIVE)	50 - 62
1F25	HARNESS, R.H. MAIN W/GREENSTAR.....	40 - 27	4F16	HOSES, GRAIN TANK UNLOADING DRIVE CYLINDER	150 - 34
1F22	HARNESS, R.H. MAIN WIRING HARNESS W/O GREENSTAR	40 - 23	2H11	HOSES, HYDRAULIC, CONTOUR MASTER (L.H.).....	70 - 58
1G19	HARNESS, UNLOADING AUGER.....	40 - 47	2G15	HOSES, HYDRAULIC, CYLINDER SPEED	70 - 38
1G16	HARVESTRAK WIRING HARNESS	40 - 44	3F5	HOSES, HYDRAULIC, VARIABLE DRIVE, FEEDER HOUSE.....	100 - 38
1D1	HEAD BOLT KIT	25 - 20	1C1	HOSES, INTERCOOLER.....	20 - 24
1D1	HEAD, CYLINDER	25 - 20	2H22	HOSES, LINES AND MOTOR, CHAFF SPREADER (DUAL MOTOR).....	70 - 70
4C25	HEADER ELECTROMAGNETIC CLUTCH	140 - 17	4E24	HOSES, LUBRICATION, HORIZONTAL UNLOADING AUGER.....	150 - 16
2F23	HEADER HEIGHT CONTROL VALVE ACTIVE HEADER HEIGHT CONTROL	70 - 21	2D9	HOSES, OIL, HYDROSTATIC DRIVE, LOWER (FOUR WHEEL DRIVE)	50 - 60
2F24	HEADER HEIGHT CONTROL, HYDRAULIC LINE AND VALVE BLOCK	70 - 22	2D1	HOSES, OIL, HYDROSTATIC DRIVE, LOWER (TWO WHEEL DRIVE)	50 - 52
2G6	HEADER LIFT CYLINDER, HYDRAULIC	70 - 29	2D3	HOSES, OIL, HYDROSTATIC DRIVE, UPPER (FOUR WHEEL DRIVE)	50 - 54
2G7	HEADER LIFT LINES AND HOSES	70 - 30	2F5	HOSES, PRESSURE, HYDRAULIC	70 - 2
2G1	HEADER LIFT MODULE, SOLENOID VALVE	70 - 24	2H3	HOSES, REEL DRIVE, HYDRAULIC, FRONT	70 - 50
1G19	HEADLIGHT, UNLOADING AUGER	40 - 47	2F7	HOSES, RETURN, HYDRAULIC RESERVOIR	70 - 4
3B11	HEADLINER, CAB	90 - 10	2E7	HOSES, STEERING, UPPER	60 - 16
1D23	HEAT SHIELD, EXHAUST MANIFOLD.....	25 - 46	2H15	HOSES, TILT CYLINDER, CONTOUR MASTER	70 - 63
3D7	HEATER AND AIR CONDITIONING DUCTS	95 - 7	4E20	HOSES, UNLOADING AUGER SWING	150 - 12
3D4	HEATER AND AIR CONDITIONING HOUSING.....	95 - 4	3J1	HOUSING AND SHOE GRAIN SUPPLY AUGERS	120 - 22
3D2	HEATER AND AIR CONDITIONING HOUSING, UPPER	95 - 2	1E8	HOUSING CONNECTORS, FUEL INJECTION PUMP ..	30 - 6
1B22	HEATER, COOLANT, ENGINE BLOCK	20 - 20	2B17	HOUSING COVER, TRANSMISSION	50 - 14
3D20	HI CAPACITY REVERSE GEAR BOX	100 - 4	3D4	HOUSING, AIR CONDITIONER/HEATER, LOWER	95 - 4
2B10	HIGH FLOATATION DRIVE WHEELS	50 - 7	3D2	HOUSING, AIR CONDITIONER/HEATER, UPPER	95 - 2
3J8	HINGE, CLEAN GRAIN LOWER AUGER DOOR	125 - 4	3D6	HOUSING, CAB AIR FILTER	95 - 6
3F23	HINGE, CYLINDER DOOR, SEPARATOR (GRAIN AND RICE).....	110 - 4	4E18	HOUSING, CHARGE, VERTICAL UNLOADING AUGER.....	150 - 10
3E13	HINGE, DOOR, FEEDER HOUSE FRAME	100 - 22	2C1	HOUSING, FINAL DRIVE	50 - 24
4E10	HINGE, DOOR, GRAIN TANK TOP	150 - 2	4F5	HOUSING, HORIZONTAL UNLOADING AUGER.....	150 - 22
2I13	HINGE, DOOR, L.H.	80 - 12	4F7	HOUSING, HORIZONTAL UNLOADING AUGER (EXPORT)	150 - 24
3F21	HINGE, DOOR, SEPARATOR.....	110 - 2	2C7	HOUSING, HYDROSTATIC PUMP	50 - 30
1E20	HINGE, ENGINE COMPARTMENT.....	30 - 18	1D11	HOUSING, OIL FILTER	25 - 32
2J18	HINGE, ENGINE COMPARTMENT DOOR.....	80 - 42	1C21	HOUSING, REAR OIL SEAL.....	25 - 15
2I23	HINGE, GULLWING DOOR, R.H.	80 - 22	3D22	HOUSING, REVERSE GEAR BOX (HI CAPACITY)	100 - 6
2I15	HINGE, L.H. GULLWING DOOR.....	80 - 14	2B5	HOUSING, SPINDLE, REAR AXLE	50 - 2
2I17	HINGE, LEFT REAR GULLWING	80 - 16	3J24	HOUSING, TAILINGS ELEVATOR	125 - 20
3B17	HINGE, PASSENGER SEAT CONSOLE	90 - 16	1D18	HOUSING, THERMOSTAT, FRONT	25 - 40
1B10	HINGE, RADIATOR ACCESS DOOR	20 - 8	2B16	HOUSING, TRANSMISSION AND DIFFERENTIAL	50 - 13
2J1	HINGE, RADIATOR DOOR	80 - 24	3K7	HOUSING, UPPER TAILINGS AUGER	125 - 28
2J8	HINGE, REAR HOOD	80 - 32	4F3	HUB SUPPORT, HORIZONTAL UNLOADING AUGER ..	150 - 20
2J8	HOOD, REAR.....	80 - 32	4H3	HUB, BOGEY WHEEL.....	160 - 16
2J12	HOOD, REAR, ACCESS DOOR	80 - 36	1B18	HUB, ENGINE GEARCASE COUPLING.....	20 - 16
4F9	HORIZONTAL UNLOADING AUGER	150 - 26	1B14	HUB, FAN.....	20 - 12
4F4	HORIZONTAL UNLOADING AUGER DRIVE GEARCASE	150 - 21	1B17	HUB, FAN DRIVE	20 - 15
4F5	HORIZONTAL UNLOADING AUGER HOUSING	150 - 22	4G24	HUB, IDLER WHEEL	160 - 12
4F7	HORIZONTAL UNLOADING AUGER HOUSING (EXPORT)	150 - 24	1B3	HUB, ROTARY SCREEN DRIVE	20 - 1
4E24	HORIZONTAL UNLOADING AUGER SWIVEL.....	150 - 16	2H13	HYDRAULIC FILTER, MAIN	70 - 60
3B6	HORN ASSEMBLY.....	90 - 5	2H11	HYDRAULIC HOSES, CONTOUR MASTER (L.H.)	70 - 58
3C5	HORN BUTTON.....	90 - 30	2G15	HYDRAULIC HOSES, CYLINDER SPEED.....	70 - 38
2G7	HOSES AND LINES, HEADER LIFT	70 - 30			
2D7	HOSES AND LINES, HYDRAULIC, L.H. (FOUR WHEEL DRIVE)	50 - 58			

ALPHABETICAL INDEX - CONTINUED

GRID		PAGE	GRID		PAGE
2G7	HYDRAULIC LINES AND HOSES, HEADER LIFT	70-30		J	
2D7	HYDRAULIC LINES AND HOSES, L.H. (FOUR WHEEL DRIVE)	50-58	1C10	JET, PISTON COOLING	25-4
2H7	HYDRAULIC LINES AND HOSES, REEL FORE-AND-AFT, FRONT	70-54		K	
2G23	HYDRAULIC LINES AND HOSES, REEL PUMP.....	70-46	1C17	KEY, DAMPER	25-11
2F13	HYDRAULIC LINES AND HOSES, WET CLUTCH OIL COOLER	70-10	3C24	KIT, CAB HARDWARE	90-50
2D13	HYDRAULIC LINES, CASE DRAIN (FOUR WHEEL DRIVE)	50-64	2H14	KIT, CONTOUR MASTER CYLINDER REPAIR.....	70-61
2H5	HYDRAULIC LINES, REEL FORE-AND-AFT, L.H. SIDE	70-52	2G5	KIT, CONTROL VALVE, AUGER SWING.....	70-28
2C19	HYDRAULIC MOTOR PISTON CARRIER	50-44	2G5	KIT, CONTROL VALVE, REEL FORE/AFT	70-28
2F5	HYDRAULIC PRESSURE LINES AND HOSES	70-2	1F13	KIT, CONVENIENCE OUTLET	40-12
2G17	HYDRAULIC PUMP FEEDER HOUSE / REEL DRIVE ..	70-40	1D24	KIT, CYLINDER HEAD	25-48
2F9	HYDRAULIC PUMP, MAIN	70-6	1F6	KIT, ELECTRICAL CONNECTOR SERVICE	40-4
2F7	HYDRAULIC RETURN LINES RESERVOIR	70-4	1F8	KIT, ELECTRICAL CONNECTOR SERVICE	40-6
2F4	HYDRAULIC/HYDROSTATIC OIL RESERVOIR.....	70-1	1C14	KIT, ENGINE OVERHAUL.....	25-8
4H12	HYDRAULICS, TENSION CYLINDER.....	160-26	1D24	KIT, ENGINE REBUILD	25-48
2C9	HYDROSTATIC DRIVE CHARGE PUMP	50-32	1D1	KIT, HEAD BOLT	25-20
2C3	HYDROSTATIC DRIVE CONTROL CABLES	50-26	2G1	KIT, HEADER LIFT CONTROL VALVE REPAIR	70-24
2C10	HYDROSTATIC DRIVE DISPLACEMENT CONTROL VALVE	50-34	2G6	KIT, HEADER LIFT HYDRAULIC CYLINDER	70-29
2C12	HYDROSTATIC DRIVE MOTOR	50-36	2C12	KIT, HYDROSTATIC DRIVE MOTOR	50-36
2D3	HYDROSTATIC DRIVE OIL HOSES, UPPER (FOUR WHEEL DRIVE)	50-54	2F9	KIT, MAIN HYDRAULIC PUMP REPAIR	70-6
2D9	HYDROSTATIC DRIVE OIL LINES AND HOSES, LOWER (FOUR WHEEL DRIVE)	50-60	2D24	KIT, MASTER BRAKE CYLINDER	60-8
2D1	HYDROSTATIC DRIVE OIL LINES AND HOSES, LOWER (TWO WHEEL DRIVE)	50-52	3B21	KIT, OPERATOR'S SEAT RECLINER	90-20
2C5	HYDROSTATIC DRIVE PUMP SHAFT AND COVER	50-28	1G22	KIT, OPTIONAL POWER.....	40-50
2D5	HYDROSTATIC OIL COOLER LINES AND HOSES	50-56	4B12	KIT, PADDLE BLADE, FINE CUT CHOPPER	130-12
2F4	HYDROSTATIC/HYDRAULIC RESERVOIR	70-1	1C16	KIT, PISTON/LINER.....	25-10
2C7	HYDROSTATIC DRIVE PUMP	50-30	3G3	KIT, RASP BAR	110-8
	I		2G21	KIT, REEL DRIVE FLOW CONTROL REPAIR.....	70-44
1B4	IDLER ARMS, ROTARY SCREEN DRIVE	20-2	2G3	KIT, REEL LIFT/VARIABLE AND CYLINDER SPEED	70-26
4G18	IDLER ASSEMBLY, ADJUSTABLE AND FRONT ARM..	160-6	1H12	KIT, REEL SPEED BRACKET.....	40-66
4G22	IDLER AXLE.....	160-10	2G17	KIT, SEAL, FEEDER HOUSE PUMP	70-40
1B19	IDLER PULLEY, AIR CONDITIONER COMPRESSOR ..	20-17	2C5	KIT, SEAL, HYDRAULIC PUMP	50-28
4G24	IDLER WHEEL ASSEMBLY	160-12	1H8	KIT, STARTER MOTOR	40-62
3G20	IDLER, BEATER DRIVE BELT	110-26	2E17	KIT, STEERING CYLINDER REPAIR	60-26
4E6	IDLER, DRIVE, CLEAN GRAIN ELEVATOR	140-50	2E5	KIT, STEERING PUMP SEALS.....	60-14
3E22	IDLER, FEEDER CONVEYOR	100-31	1F10	KIT, TERMINAL AND WIRING	40-8
3G16	IDLER, STRIPPER BEATER DRIVE.....	110-22	2H15	KIT, TILT CYLINDER REPAIR, CONTOUR MASTER.....	70-63
3C5	IGNITION SWITCH	90-30	1C18	KIT, UNDERSIZE CRANKSHAFT	25-12
1H15	INDICATOR, SPIKE TOOTH	40-70	1C19	KIT, UNDERSIZED MAIN BEARING CRANKSHAFT	25-13
1E6	INJECTION PUMP GEAR	30-4	4E22	KIT, UNLOADING AUGER SWING CYLINDER REPAIR	150-14
1E6	INJECTION PUMP LUBE LINE.....	30-4	1D16	KIT, WATER PUMP SEAL.....	25-38
1E6	INJECTION PUMP, ELECTRONIC FUEL.....	30-4	3B13	KIT, WINDSHIELD	90-12
2C17	INNER COVER - CAM LOBE MOTOR.....	50-42	4B14	KNIFEBANK AND HOUSING, CHOPPER	130-14
2B18	INPUT SHAFT, TRANSMISSION	50-16	3C1	KNOB, ARMREST CONTROL PANEL	90-26
3G9	INSERTS, CONCAVE	110-14	3D6	KNOB, CAB AIR FILTER DOOR.....	95-6
3G7	INSERTS, SPIKE-TOOTH CONCAVE	110-12	2H16	KNOB, CHAFF SPREADER ADJUSTER	70-64
1D1	INSERTS, VALVE SEAT	25-20	2I13	KNOB, DOOR, L.H.	80-12
1I5	INSPECTION LIGHT, CLEANING SHOE	40-85	3C9	KNOB, GEARSHIFT.....	90-34
1D20	INTAKE MANIFOLD AND GASKET	25-42	3B21	KNOB, LUMBAR, OPERATOR'S SEAT	90-20
1E22	INTAKE TUBES AND AIR CLEANER.....	30-20	3C13	KNOB, OVERHEAD CONSOLE	90-38
1D1	INTAKE VALVES	25-20	3C5	KNOB, STEERING WHEEL.....	90-30
1D8	INTAKE, ENGINE OIL PUMP	25-28		L	
1C1	INTERCOOLER, ENGINE	20-24	1F18	L.H. MAIN WIRING HARNESS	40-18
4D9	INTERMEDIATE SHAFT MOUNTING, CYLINDER DRIVE, DUAL-RANGE.....	140-28	1F20	L.H. MAIN WIRING HARNESS	40-20
4D11	INTERMEDIATE SHEAVE, CYLINDER DRIVE, DUAL-RANGE	140-30	2E11	L.H. SIDE LINES, STEERING	60-20
			4I9	LABEL, FRONT AND REAR TIRE	170-20
			4I11	LABELS, FRENCH CANADIAN.....	170-22
			4I12	LABELS, PORTUGUESE	170-23

ALPHABETICAL INDEX - CONTINUED

GRID	PAGE	GRID	PAGE
4113	LABELS, ROMANIAN.....	170 - 24	
4114	LABELS, RUSSIAN	170 - 25	
417	LABELS, SAFETY (RUBBER TRACK)	170 - 18	
4115	LABELS, SPANISH	170 - 26	
4116	LABELS, UKRAINIAN	170 - 27	
3C19	LADDER EXTENSION ASSEMBLY	90 - 45	
3C17	LADDER, CAB PLATFORM.....	90 - 42	
2J18	LADDER, ENGINE COMPARTMENT	80 - 42	
4E10	LADDER, GRAIN TANK.....	150 - 2	
2J4	LADDER, REAR LANDING	80 - 28	
1H24	LAMP ASSEMBLY, L.H. FRONT.....	40 - 79	
1H25	LAMP ASSEMBLY, R.H. FRONT TURN SIGNAL	40 - 80	
111	LAMP ASSEMBLY, REAR (AMBER)	40 - 81	
1H24	LAMP, TURN SIGNAL, L.H. FRONT (AMBER)	40 - 79	
3C20	LANDING, L.H.	90 - 46	
3C22	LANDING, R.H.	90 - 48	
2J4	LANDING, REAR	80 - 28	
1G22	LATCH AND COVER, ELECTRONICS MODULE	40 - 50	
2J6	LATCH ARM, REAR LADDER LANDING	80 - 30	
3B15	LATCH, CAB DOOR	90 - 14	
2113	LATCH, DOOR L.H.	80 - 12	
3E7	LATCH, DRIVE SHIELD	100 - 16	
3E11	LATCH, DRIVE SHIELD	100 - 20	
3E9	LATCH, DRIVE SHIELD, L.H. WITH AIRFLOW	100 - 18	
4E16	LATCH, GRAIN TANK CLEAN OUT CHUTE	150 - 8	
4E10	LATCH, GRAIN TANK TOP.....	150 - 2	
3E19	LATCH, HANDLE, FEEDER HOUSE	100 - 28	
3C19	LATCH, LADDER EXTENSION.....	90 - 45	
2J4	LATCH, LADDER, REAR LANDING	80 - 28	
1B10	LATCH, RADIATOR DOOR.....	20 - 8	
3H6	LATCH, REAR SHIELDS.....	110 - 38	
3J24	LATCH, TAILINGS ELEVATOR.....	125 - 20	
3I18	LEAF SPRING, CHAFFER	120 - 14	
3I22	LEAF SPRING, SIEVE ELEMENT	120 - 18	
2I7	LEFT SIDE SHIELD ASSEMBLY	80 - 6	
3C9	LEVER, GEARSHIFT	90 - 34	
3J24	LEVER, TAILINGS ELEVATOR.....	125 - 20	
2G6	LIFT CYLINDER, HEADER, HYDRAULIC	70 - 29	
1D5	LIFT STRAPS, ENGINE.....	25 - 24	
1H25	LIGHT ASSEMBLY - R.H. FRONT (AMBER) TURN SIGNAL	40 - 80	
3J24	LIGHT SWITCH, TAILINGS ELEVATOR	125 - 20	
1H23	LIGHT, CAB ROOF	40 - 78	
115	LIGHT, CLEANING SHOE INSPECTION	40 - 85	
3D23	LIGHT, INDICATOR, REVERSER GEAR BOX (STANDARD)	100 - 8	
1H24	LIGHT, L.H. FRONT (AMBER)	40 - 79	
112	LIGHT, REAR TURN AND TAIL	40 - 82	
2J22	LIGHT, REAR, ENGINE ACCESS PLATFORM	80 - 46	
2J18	LIGHT, SERVICE, ENGINE COMPARTMENT	80 - 42	
2I15	LIGHT, SERVICE, L.H. GULLWING	80 - 14	
2I23	LIGHT, SERVICE, R.H. GULLWING	80 - 22	
2J1	LIGHT, SERVICE, RADIATOR DOOR	80 - 24	
113	LIGHT, SIDE FINDER	40 - 83	
3B4	LIGHT, STUBBLE, CAB.....	90 - 2	
114	LIGHT, TRANSPORT WARNING	40 - 84	
1G19	LIGHT, UNLOADING AUGER	40 - 47	
3B24	LIGHTER, CIGARETTE	90 - 24	
3F12	LIMIT CURTAIN, FEEDER HOUSE DUST FAN	100 - 46	
1C16	LINER O-RINGS.....	25 - 10	
1C16	LINER SHIM.....	25 - 10	
2H18	LINES AND FITTINGS, CHAFF SPREADER	70 - 66	
2G7	LINES AND HOSES, HEADER LIFT	70 - 30	
2D7	LINES AND HOSES, HYDRAULIC, L.H. (FOUR WHEEL DRIVE)	50 - 58	
2G23	LINES AND HOSES, HYDRAULIC, REEL PUMP	70 - 46	
2D5	LINES AND HOSES, HYDROSTATIC OIL COOLER.....	50 - 56	
2H1	LINES AND HOSES, REEL DRIVE, HYDRAULIC, L.H.	70 - 48	
2H9	LINES AND HOSES, REEL LIFT	70 - 56	
2E9	LINES AND HOSES, STEERING, FRONT.....	60 - 18	
2E15	LINES AND HOSES, STEERING, REAR	60 - 24	
2F13	LINES AND HOSES, WET CLUTCH OIL COOLER, HYDRAULIC.....	70 - 10	
2E11	LINES STEERING, L.H. SIDE	60 - 20	
2D22	LINES, BRAKE, RESERVOIR, MASTER CYLINDER	60 - 6	
2D11	LINES, CONTROL VALVE TO CAM LOBE MOTOR (FOUR WHEEL DRIVE)	50 - 62	
1E12	LINES, FUEL FILTER	30 - 10	
1E4	LINES, FUEL INJECTION	30 - 2	
1E4	LINES, FUEL LEAK-OFF.....	30 - 2	
1E6	LINES, FUEL LEAK-OFF.....	30 - 4	
1E6	LINES, INJECTION PUMP LUBE	30 - 4	
2D9	LINES, OIL, HYDROSTATIC DRIVE, LOWER (FOUR WHEEL DRIVE)	50 - 60	
2D1	LINES, OIL, HYDROSTATIC DRIVE, LOWER (TWO WHEEL DRIVE)	50 - 52	
2F5	LINES, PRESSURE, HYDRAULIC	70 - 2	
2H3	LINES, REEL DRIVE, HYDRAULIC, FRONT	70 - 50	
2F7	LINES, RETURN, HYDRAULIC RESERVOIR	70 - 4	
2E13	LINES, STEERING R.H. SIDE	60 - 22	
1D21	LINES, TURBOCHARGER OIL	25 - 44	
4E20	LINES, UNLOADING AUGER SWING	150 - 12	
2H20	LINES, VALVE AND PUMP, CHAFF SPREADER	70 - 68	
1H15	LINKAGE, CONCAVE INDICATOR.....	40 - 70	
1H15	LINKAGE, CORN AND SMALL GRAIN CONCAVE	40 - 70	
4E1	LINKAGE, FAN DRIVE SPEED CONTROL	140 - 44	
3F10	LINKAGE, FEEDER HOUSE POSITION SENSOR	100 - 44	
3C9	LINKAGE, GEARSHIFT	90 - 34	
4D23	LINKAGE, SPEED CONTROL, FAN DRIVE.....	140 - 42	
3J14	LOADING AUGER, CLEAN GRAIN	125 - 10	
3I16	LOUVER, CHAFFER ELEMENT	120 - 12	
3D7	LOUVER, HEATER AND AIR CONDITIONER DUCTS ..	95 - 7	
3I10	LOUVER, PRECLEANING CHAFFER.....	120 - 6	
3I22	LOUVER, SIEVE ELEMENT	120 - 18	
1H21	LOW SHAFT SPEED SENSORS AND BRACKETS	40 - 76	
3J8	LOWER AUGER, CLEAN GRAIN	125 - 4	
3J10	LOWER ELEVATOR, CLEAN GRAIN.....	125 - 6	
2D9	LOWER HYDROSTATIC DRIVE OIL LINES AND HOSES (FOUR WHEEL DRIVE)	50 - 60	
2D1	LOWER HYDROSTATIC DRIVE OIL LINES AND HOSES (TWO WHEEL DRIVE)	50 - 52	
3K3	LOWER TAILINGS AUGER.....	125 - 24	
3K5	LOWER TAILINGS AUGER DRIVE TIGHTENER	125 - 26	
3K3	LOWER TAILINGS AUGER SHAFT	125 - 24	
3K3	LOWER TAILINGS AUGER SHAFT TIGHTENER	125 - 24	
3J22	LOWER TAILINGS AUGER TROUGH	125 - 18	
3H12	LUBE LINES AND BEARING, MODULE FRONT.....	110 - 44	
1C9	LUBRICANT, ELECTRICAL CONNECTOR, ENGINE	25 - 2	
1C9	LUBRICANT, VALVE STEM	25 - 2	
M			
1H21	MAGNET, LOW SPEED SENSOR	40 - 76	
1H20	MAGNETIC PICK-UP (ENGINE)	40 - 75	
1C10	MAIN BEARING CAPS	25 - 4	
1C20	MAIN BEARINGS.....	25 - 14	
4G16	MAIN FRAME PIVOT BUSHINGS.....	160 - 4	
4C16	MAIN GEARCASE	140 - 6	
2F9	MAIN HYDRAULIC PUMP	70 - 6	
2F23	MAIN VALVE BLOCK SOLENOID ACTIVE HEADER HEIGHT CONTROL	70 - 21	
1F17	MAIN WIRING HARNESS, L.H.	40 - 17	

ALPHABETICAL INDEX - CONTINUED

GRID		PAGE	GRID		PAGE
1F25	MAIN WIRING HARNESS, R.H. W/GREENSTAR.....	40 - 27	2J20	MOUNTING BRACKETS, FUEL TANK.....	80 - 44
1F22	MAIN WIRING HARNESS, R.H. W/O GREENSTAR.....	40 - 23	4C9	MOUNTING SUPPORT, CHAFF SPREADER.....	130 - 34
3D11	MANIFOLD, A/C COMPRESSOR, R134A.....	95 - 11	2J10	MOUNTING TRACKS AND SUPPORTS, MODULE.....	80 - 34
2C17	MANIFOLD, CAM LOBE MOTOR.....	50 - 42	4H6	MOUNTING, FINAL DRIVE.....	160 - 20
1D23	MANIFOLD, EXHAUST.....	25 - 46	4F16	MOUNTING, GRAIN TANK UNLOADING DRIVE CYLINDER.....	150 - 34
2D7	MANIFOLD, HYDRAULIC (FOUR WHEEL DRIVE).....	50 - 58	2F4	MOUNTING, HYDRAULIC/HYDRO OIL RESERVOIR....	70 - 1
1D20	MANIFOLD, INTAKE.....	25 - 42	2G11	MOUNTING, ONE GALLON ACCUMULATOR.....	70 - 34
1D18	MANIFOLD, WATER, FRONT.....	25 - 40	4G14	MOUNTING, TRACK FRAME.....	160 - 2
4G3	MASS FLOW SENSOR BRACKET, YIELD MAPPING ..	155 - 6	4E22	MOUNTING, UNLOADING AUGER SWING CYLINDER	150 - 14
4G3	MASS FLOW SENSOR DOOR, YIELD MAPPING.....	155 - 6	2F20	MOUNTINGS, SOLENOID CONTROL VALVE MODULE, 4-STACKTACK).....	70 - 18
4G3	MASS FLOW SENSOR, YIELD MAPPING.....	155 - 6	2F18	MOUNTINGS, SOLENOID CONTROL VALVE, 5-STACK.....	70 - 16
2D24	MASTER BRAKE CYLINDER.....	60 - 8	1C3	MOUNTS, ENGINE.....	20 - 26
2D20	MASTER CYLINDER, AND BRAKE PEDALS.....	60 - 4	2D15	MUD SHIELDS, POWERED REAR WHEELS.....	50 - 66
2D22	MASTER CYLINDER, RESERVOIR, BRAKE LINES.....	60 - 6	1E24	MUFFLER AND EXHAUST PIPE.....	30 - 22
3B9	MAT, CAB FLOOR.....	90 - 8		N	
3E13	MAT, FEEDER HOUSE FRAME.....	100 - 22	1E4	NOZZLE, FUEL INJECTION.....	30 - 2
3K9	MAT, GRAIN TANK EXTENSION.....	125 - 30	1E10	NOZZLE, FUEL INJECTION.....	30 - 8
2J8	MAT, REAR HOOD.....	80 - 32		O	
3K1	MATERIAL SENSOR, TAILINGS ELEVATOR.....	125 - 22	1C16	O-RING, LINER.....	25 - 10
3C20	MIRROR, L.H.....	90 - 46	1D16	O-RING, WATER PUMP.....	25 - 38
3C22	MIRROR, R.H.....	90 - 48	1C9	OFF-SEASON STORAGE KIT.....	25 - 2
4G1	MOBILE PROCESSOR, YIELD MAPPING.....	155 - 4	1D10	OIL COOLER ADAPTER.....	25 - 30
3H5	MODULE ASSEMBLY.....	110 - 36	2F11	OIL COOLER AND AIR CONDITIONING CONDENSOR.....	70 - 8
3H8	MODULE CRANK OUT SYSTEM.....	110 - 40	1D9	OIL COOLER BYPASS ADAPTER AND TUBES.....	25 - 29
3H24	MODULE DRIVES, ENGINE GEARCASE.....	110 - 56	1D10	OIL COOLER COVER AND TUBES.....	25 - 30
3I1	MODULE DRIVES, ENGINE GEARCASE.....	110 - 58	2D5	OIL COOLER LINES AND HOSES, HYDROSTATIC.....	50 - 56
3H10	MODULE FRAME AND COVERS.....	110 - 42	1D10	OIL COOLER, ENGINE.....	25 - 30
3H12	MODULE FRONT BEARING AND LUBE LINES.....	110 - 44	3F3	OIL COOLER, FEEDER HOUSE GEARCASE.....	100 - 36
3H18	MODULE GEARBOX, SHAFT AND COUPLING.....	110 - 50	1B24	OIL DRAIN, ENGINE CRANKCASE.....	20 - 22
3H14	MODULE GRATE ASSEMBLY, FINGER BAR AND FILLER PLATE.....	110 - 46	4C12	OIL FILTER ASSEMBLY, ENGINE GEARCASE.....	140 - 2
2J10	MODULE MOUNTING TRACKS AND SUPPORTS.....	80 - 34	1D11	OIL FILTER HOUSING GASKET.....	25 - 32
3H3	MODULE RAILS, TINE SEPARATOR.....	110 - 34	1D11	OIL FILTER, ENGINE.....	25 - 32
3H6	MODULE REAR SHIELDS.....	110 - 38	2D9	OIL HOSES, HYDROSTATIC DRIVE, LOWER (FOUR WHEEL DRIVE).....	50 - 60
3H16	MODULE TINE SEPARATORS.....	110 - 48	2D1	OIL HOSES, HYDROSTATIC DRIVE, LOWER (TWO WHEEL DRIVE).....	50 - 52
1G3	MODULE WIRING HARNESS, REAR HOOD.....	40 - 30	2D3	OIL HOSES, UPPER, HYDROSTATIC DRIVE (FOUR WHEEL DRIVE).....	50 - 54
1G22	MODULE, CENTRAL ELECTRONICS AND CIRCUIT BOARDS.....	40 - 50	2C1	OIL LINE, FINAL DRIVE.....	50 - 24
3C11	MODULE, CORNERPOST, R.H.....	90 - 36	2D9	OIL LINES HYDROSTATIC DRIVE, LOWER (FOUR WHEEL DRIVE).....	50 - 60
4G9	MODULE, DATASTORE.....	155 - 12	2D1	OIL LINES HYDROSTATIC DRIVE, LOWER (TWO WHEEL DRIVE).....	50 - 52
4G11	MODULE, DATASTORE.....	155 - 14	2E3	OIL LINES, BRAKE.....	60 - 12
3K1	MODULE, TAILINGS ELEVATOR SENSOR.....	125 - 22	1D21	OIL LINES, TURBOCHARGER.....	25 - 44
2F16	MODULE, 6-STACK SOLENOID CONTROL VALVE.....	70 - 14	1D13	OIL PAN AND GASKET.....	25 - 34
1H17	MOISTURE SENSOR.....	40 - 72	1D13	OIL PAN DRAIN VALVE.....	25 - 34
4G5	MOISTURE SENSOR BRACKET, YIELD MAPPING.....	155 - 8	1D10	OIL PRESSURE REGULATING VALVE.....	25 - 30
4G7	MOISTURE SENSOR COVERS - YIELD MAPPING W/O MOISTURE SENSOR.....	155 - 10	1D11	OIL PRESSURE REGULATING VALVE.....	25 - 32
4G7	MOISTURE SENSOR COVERS, YIELD MAPPING.....	155 - 10	1B20	OIL PRESSURE SENSOR, ENGINE.....	20 - 18
4G5	MOISTURE SENSOR MOTOR HARNESS, YIELD MAPPING.....	155 - 8	1C17	OIL PUMP DRIVE GEAR.....	25 - 11
4G5	MOISTURE SENSOR MOTOR, YIELD MAPPING.....	155 - 8	1D8	OIL PUMP INTAKE.....	25 - 28
4G5	MOISTURE SENSOR, YIELD MAPPING.....	155 - 8	1D6	OIL PUMP, ENGINE.....	25 - 26
1G17	MONITOR, GRAIN LOSS.....	40 - 45	1C21	OIL SEAL, REAR, CRANKSHAFT.....	25 - 15
4C3	MOTOR AND DISC, CHAFF SPREADER.....	130 - 28	3D11	OIL, A/C COMPRESSOR.....	95 - 11
2C19	MOTOR PISTON CARRIER.....	50 - 44	1C8	OIL, ENGINE (TORQ-GARD, PLUS-50).....	25 - 1
1H14	MOTOR, ADJUSTING, CONCAVE.....	40 - 68	1C9	OIL, VALVE STEM LUBRICANT.....	25 - 2
1H19	MOTOR, ADJUSTING, SEPARATOR FAN DRIVE.....	40 - 74			
2C15	MOTOR, CAM LOBE.....	50 - 40			
2C12	MOTOR, HYDROSTATIC DRIVE.....	50 - 36			
2C14	MOTOR, HYDROSTATIC VALVE.....	50 - 38			
4G5	MOTOR, MOISTURE SENSOR, YIELD MAPPING.....	155 - 8			
3D2	MOTOR, PRESSURE BLOWER.....	95 - 2			
3D4	MOTOR, RECIRCULATION BLOWER.....	95 - 4			
1H12	MOTOR, REEL SPEED, AND BRACKET.....	40 - 66			
1G14	MOTOR, WINDSHIELD WIPER (LONG).....	40 - 42			

ALPHABETICAL INDEX - CONTINUED

<i>GRID</i>		<i>PAGE</i>	<i>GRID</i>		<i>PAGE</i>
2G11	ONE GALLON ACCUMULATOR AND MOUNTING.....	70 - 34	4G1	PROCESSOR, MOBILE, YIELD MAPPING	155 - 4
2G9	ONE HALF GALLON ACCUMULATOR	70 - 32	1B19	PULLEY, AIR CONDITIONER COMPRESSOR FAN	20 - 17
3B24	OPERATOR'S ARMREST PANEL	90 - 24	1E1	PULLEY, CRANKSHAFT	25 - 50
3C1	OPERATOR'S ARMREST PANEL	90 - 26	3E1	PULLEY, FEEDER HOUSE DRIVE TIGHTENER	100 - 10
3B21	OPERATOR'S SEAT AND BACKREST	90 - 20	3F12	PULLEY, FEEDER HOUSE DUST FAN, L.H.	100 - 46
3B23	OPERATOR'S SEATBELT.....	90 - 23	3K5	PULLEY, LOWER TAILINGS TIGHTENER.....	125 - 26
1F13	OUTLET, CONVENIENCE, KIT.....	40 - 12	4D15	PULLEY, SECONDARY COUNTERSHAFT DRIVE	140 - 34
1C14	OVERHAUL KIT, ENGINE.....	25 - 8	3E3	PULLEY, VARIABLE SPEED DRIVE TIGHTENER	100 - 12
3C13	OVERHEAD CONSOLE.....	90 - 38	4C20	PUMP DRIVE AND SEPARATOR, GEARCASE	140 - 10
			2G19	PUMP MOUNTING SHEAVE, REEL / BELT PICKUP ...	70 - 42
	P		2H20	PUMP, CHAFF SPREADER HYDRAULIC	70 - 68
			2G17	PUMP, FEEDER HOUSE / REEL DRIVE.....	70 - 40
3I20	PAD, CHAFFER FRAME	120 - 16	1E16	PUMP, FUEL	30 - 14
3J10	PADDLE, CLEAN GRAIN ELEVATOR	125 - 6	1E6	PUMP, FUEL INJECTION	30 - 4
4G5	PADDLE, MOISTURE SENSOR, YIELD MAPPING.....	155 - 8	1E9	PUMP, FUEL TRANSFER	30 - 7
3K2	PADDLE, TAILINGS ELEVATOR	125 - 23	2C5	PUMP, HYDROSTATIC DRIVE	50 - 28
3H16	PADDLE, TINE SEPARATOR	110 - 48	2C9	PUMP, HYDROSTATIC DRIVE CHARGE	50 - 32
3K7	PADDLE, UPPER TAILINGS AUGER.....	125 - 28	2F9	PUMP, MAIN HYDRAULIC	70 - 6
4B12	PADDLED BLADE, FINE CUT CHOPPER	130 - 12	1D6	PUMP, OIL, ENGINE	25 - 26
4C7	PAN, CHAFF SPREADER.....	130 - 32	2G23	PUMP, REEL, HYDRAULIC LINES AND HOSES	70 - 46
1D13	PAN, OIL	25 - 34	2E5	PUMP, STEERING.....	60 - 14
3G14	PAN, SHAKER	110 - 20	3C3	PUMP, STEERING COLUMN	90 - 28
3C1	PANEL, ARMREST	90 - 26	1D16	PUMP, WATER	25 - 38
3B7	PANEL, FLOOR	90 - 6	1D3	PUSH RODS	25 - 22
2I13	PANEL, LEFT FRONT AND DOOR	80 - 12			
3B24	PANEL, OPERATOR'S ARMREST CONTROL	90 - 24		R	
3C13	PANEL, OVERHEAD CONSOLE.....	90 - 38	1F23	R.H. MAIN WIRING HARNESS	
2I21	PANEL, RIGHT FRONT.....	80 - 20		W/O GREENSTAR	40 - 24
3B9	PANELS, CAB INTERIOR TRIM	90 - 8	1G1	R.H. MAIN WIRING HARNESS W/GREENSTAR.....	40 - 28
2D18	PARKING BRAKE PEDAL AND SEAL	60 - 2	2E13	R.H. SIDE STEERING LINES	60 - 22
2D20	PEDAL, BRAKE AND MASTER CYLINDER.....	60 - 4	1B12	RADIATOR	20 - 10
3C7	PEDAL, REVERSER FOOT CONTROL, FEEDER		2J1	RADIATOR DOOR AND HANDRAIL.....	80 - 24
	HOUSE	90 - 32	1B8	RADIATOR SHELL AND SEALS.....	20 - 6
3C3	PEDAL, STEERING COLUMN	90 - 28	3C15	RADIO, SPEAKERS AND ANTENNA	90 - 40
1H20	PICK-UP, MAGNETIC (ENGINE)	40 - 75	3H3	RAILS, TINE SEPARATOR MODULE.....	110 - 34
1C10	PISTON COOLING JETS	25 - 4	1B6	RAKE, ROTARY SCREEN	20 - 4
1C16	PISTON RINGS	25 - 10	3G3	RASP BAR THRESHING CYLINDER	110 - 8
1C16	PISTON/LINER KIT	25 - 10	3B7	REAR AND SIDE CAB SEALS	90 - 6
2C19	PISTON, CAM, AND CARRIER.....	50 - 44	4G22	REAR ARM, TENSION CYLINDER & IDLER AXLE	160 - 10
1C16	PISTON, ENGINE	25 - 10	2B5	REAR AXLE SPINDLE HOUSING	50 - 2
4D19	PIVOT ARM DRIVE TIGHTENER, CLEANING SHOE....	140 - 38	2E20	REAR AXLE SPINDLES (HEAVY DUTY).....	60 - 30
4G16	PIVOT BUSHINGS, MAIN FRAME	160 - 4	2E18	REAR AXLE SPINDLES (REGULAR DUTY)	60 - 28
2C20	PIVOT, CAPS AND YOKE (STEERABLE MOTOR).....	50 - 46	2B4	REAR AXLE SUPPORT.....	50 - 1
4F11	PLATE, CROSS AUGER BEARING, L.H.....	150 - 28	2B6	REAR AXLE, ADJUSTABLE	50 - 3
1E18	PLATFORM, ENGINE	30 - 16	2B5	REAR AXLE, FIXED	50 - 2
2J22	PLATFORM, ENGINE ACCESS	80 - 46	2I19	REAR CORNER SHEET, L.H.....	80 - 18
3C20	PLATFORM, L.H.	90 - 46	4B5	REAR DOOR, STRAW CHOPPER, UPPER	130 - 4
4I12	PORTUGUESE DECALS AND LABELS	170 - 23	2J8	REAR HOOD	80 - 32
4F23	POSITION RECEIVER BRACKET, YIELD MAPPING ...	155 - 2	2J12	REAR HOOD ACCESS DOOR	80 - 36
4F23	POSITION RECEIVER COVER, YIELD MAPPING	155 - 2	1G3	REAR HOOD AND MODULE WIRING HARNESS	40 - 30
4F23	POSITION RECEIVER, YIELD MAPPING	155 - 2	2J14	REAR HOOD DOOR	80 - 38
3C13	POTENTIOMETER	90 - 38	2J6	REAR LADDER LANDING LATCH ARM	80 - 30
3D4	PRE-SCREEN FILTER, HEATER AND AIR		1I1	REAR LAMP ASSEMBLY (AMBER)	40 - 81
	CONDITIONER	95 - 4	3J18	REAR LEFT SIDE TAILINGS SHIELD	125 - 14
3I12	PRECLEANER CHAFFER FRAME	120 - 8	1C21	REAR OIL SEAL AND HOUSING.....	25 - 15
3I14	PRECLEANER CHAFFER FRAME ARMS	120 - 10	3H6	REAR SHIELDS, MODULE	110 - 38
3I10	PRECLEANING CHAFFER	120 - 6	2E15	REAR STEERING LINES AND HOSES	60 - 24
2G13	PRESSURE GAUGE, ACCUMULATOR	70 - 36	1C3	REAR SUPPORT, ENGINE MOUNTS	20 - 26
4C14	PRESSURE REGULATOR, ENGINE GEARCASE.....	140 - 4	3J18	REAR TAILINGS SHIELD, LEFT SIDE.....	125 - 14
4C12	PRESSURE SWITCH, ENGINE GEARCASE OIL		1I2	REAR TURN AND TAIL LIGHTS	40 - 82
	FILTER ASSEMBLY	140 - 2	3C22	REAR VIEW MIRROR, R.H.	90 - 48
2F5	PRESSURE, HYDRAULIC, LINES AND HOSES.....	70 - 2	3C20	REAR VIEW, L.H.	90 - 46
4D1	PRIMARY COUNTERSHAFT AND VARIABLE SHEAVE	140 - 18	2B13	REAR WHEEL WHEEL WEIGHTS	50 - 10
4C23	PRIMARY COUNTERSHAFT GEARCASE	140 - 14	2B14	REAR WHEELS (4-WHEEL DRIVE).....	50 - 11
4C22	PRIMARY COUNTERSHAFT SUPPORT	140 - 13	3D9	RECEIVER-DRYER, AIR CONDITIONER.....	95 - 9
1E9	PRIMER, HAND, FUEL TRANSFER PUMP	30 - 7			