

H39368

-UN-01JAN94



*JOHN DEERE 9510 AND SIDEHILL 9510 MAXIMIZER™ COMBINES*

*9510 MANUFACTURED (1998- )  
SH9500 MANUFACTURED (1998- )*

*(SPECIFICATIONS AND DESIGN SUBJECT TO CHANGE WITHOUT NOTICE)*

*COPYRIGHT (C) 2000. DEERE & COMPANY. MOLINE, ILLINOIS, USA. ALL RIGHT RESERVED.*

## NOTE

FOR 900 SERIES PLATFORM PARTS INFORMATION, REFER TO JOHN DEERE 900 SERIES PLATFORM PARTS CATALOG - PC-2104.

FOR 40 SERIES CORN HEAD PARTS INFORMATION, REFER TO JOHN DEERE 40 SERIES CORN HEAD PARTS CATALOG - PC-1223.

FOR 50A SERIES ROW-CROP HEAD PARTS INFORMATION, REFER TO JOHN DEERE 50A SERIES ROW-CROP HEAD PARTS CATALOG - PC-1747.

FOR THREE-ROLLER BELT PICKUP PARTS INFORMATION, REFER TO JOHN DEERE THREE-ROLLER BELT PICKUP PARTS CATALOG - PC-2210.

FOR 918 AND 920 DRAPER PARTS INFORMATION, REFER TO JOHN DEERE 918 AND 920 DRAPER PLATFORMS PARTS CATALOG - PC-2212.

FOR 90 SERIES CORN HEAD PARTS INFORMATION, REFER TO JOHN DEERE 90 SERIES CORN HEAD PARTS CATALOG - PC-2404.

## IMPORTANT

THIS PARTS CATALOG CONTAINS PARTS INFORMATION FOR THE 9510 AND SIDEHILL 9510 MAXIMIZER COMBINES. VINTAGE IS DETERMINED BY THE COMBINE SERIAL NUMBER OR THE PRODUCT IDENTIFICATION NUMBER (PIN). IT IS IMPORTANT THAT THE CORRECT NUMBERS BE USED WHEN ORDERING PARTS.

## PRODUCT INFORMATION NUMBER (PIN) PLATE

THE PRODUCT IDENTIFICATION PLATE (PIN) IS LOCATED NEAR THE RIGHT-HAND SIDE OF THE TOOL BOX.  
AN EXAMPLE OF THE TWO-LINES ON THIS PIN PLATE IS:

HO9510X675000  
COMBINE

(FIRST LINE)

HO - MANUFACTURING UNIT (HARVESTER WORKS)

9510 - MODEL IDENTIFIER

X - CONFIGURATION CODE/MODEL IDENTIFIER SUFFIX

675000 - SEQUENTIAL NUMBER USED IN SERIAL NO. COLUMN

(SECOND LINE)

COMBINE - TYPE OF PRODUCT

## PARTS LISTING INFORMATION

SERIAL NUMBER OR PRODUCT IDENTIFICATION NUMBER (PIN) INFORMATION SHOWS ON WHICH MACHINES PART MAY BE USED; FOR EXAMPLE:

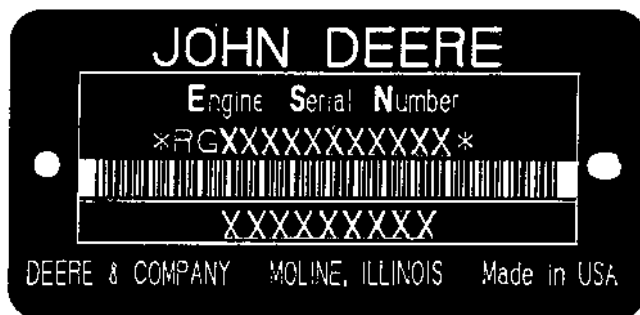
- THE PART CAN BE USED ON ALL MACHINES.
- 000000 THE PART CAN BE USED ON ALL MACHINES UP TO AND INCLUDING THE SERIAL NUMBER LISTED.
- 000000- THE PART CAN BE USED ON ALL MACHINES BEGINNING WITH THE SERIAL NUMBER LISTED.
- 000000-000000 THE PART CAN BE USED ON ALL MACHINES BETWEEN AND INCLUDING SERIAL NUMBERS LISTED.

WHEN XXXXXX'S ARE LISTED IN PLACE OF A SERIAL NUMBER, A SERIAL NUMBER CHANGE WAS MADE, BUT THE EXACT SERIAL NUMBER WAS NOT AVAILABLE WHEN THE CATALOG WAS PRINTED.

### SHORT BLOCK SERIAL NUMBER PLATE

( -RGSB076882500)

RGP3513 -UN-01JAN94



RGP3513

THE REPLACEMENT SHORT BLOCK ASSEMBLY HAS A SERIAL NUMBER PLATE ATTACHED. THE ORIGINAL ENGINE SERIAL NUMBER MUST BE STAMPED ONTO THE NEW PLATE IN THE BLANK SPACE PROVIDED, AS A REFERENCE FOR YOUR DEALER. THE PLATE CAN BE ATTACHED WITH (2) 37H44 DRIVE SCREWS.

- |                                       |                            |
|---------------------------------------|----------------------------|
| 1. DESIGNATES ENGINE MANUFACTURER     | RG - WATERLOO ENGINE WORKS |
| 2. DESIGNATES REPLACEMENT SHORT BLOCK | SB                         |
| 3. DESIGNATES LITERS                  | XXX- 076 (7.6)             |
| 4. DESIGNATES THE PRODUCTION DATE     | 8825                       |
| 5. DESIGNATES COMPONENT SEQUENCE      | 00                         |

**Thanks very much for your reading,  
Want to get more information,  
Please click here, Then get the complete  
manual**

**JustClickHere** 

**NOTE:**

**If there is no response to click on the link above,  
please download the PDF document first, and then  
click on it.**

**Have any questions please write to me:  
[admin@servicemanualperfect.com](mailto:admin@servicemanualperfect.com)**

# 1A6

9510 AND SH9510 MAXIMIZER™ COMBINES

## TWO LINE BAR CODED ENGINE SERIAL NUMBER PLATE

RGP4941 -UN-25JUL97



### FIRST LINE

RG - WATERLOO ENGINE WORKS

6

081 (8.1 LITERS)

H - AIR-TO-AIR

H

XXXXXX

### SECOND LINE

6081HH001

6081HH002

### DEFINES

DESIGNATES ENGINE MANUFACTURER.

DESIGNATES NUMBER OF CYLINDERS.

DESIGNATES LITER DISPLACEMENT.

DESIGNATES TYPE OF AIR INTAKE SYSTEM.

DESIGNATES HARVESTER VEHICLE.

DESIGNATES ENGINE SERIAL NUMBER.

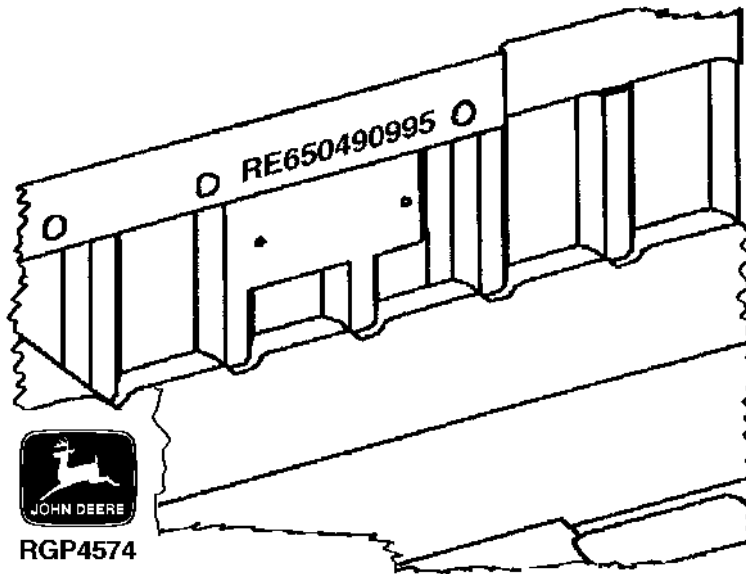
### APPLICATION

9510

9510 SIDEHILL

## SHORT BLOCK SERIAL NUMBER IDENTIFICATION

RGP4574 -UN-02OCT95



SERIAL NUMBER STAMPED INTO CASTING OF BLOCK NEAR PREVIOUS SERIAL NUMBER PLATE.

EXAMPLE: RE650490995

- |                                   |         |
|-----------------------------------|---------|
| 1. DESIGNATES SERVICE PART NUMBER | RE65049 |
| 2. DESIGNATES MONTH ASSEMBLED     | 09      |
| 3. DESIGNATES YEAR ASSEMBLED      | 95      |

## **DIRECTION ARROW**

ARROWS ARE USED WITH ILLUSTRATIONS TO INDICATE THE FRONT OF THE UNIT. "RIGHT-HAND" AND "LEFT-HAND" SIDES ARE DETERMINED BY FACING IN THE DIRECTION OF MACHINE FORWARD TRAVEL.

## **BOX-ENCLOSED ILLUSTRATIONS**

A KEY NUMBER, SHOWN IN THE PARTS LIST, IS ASSIGNED TO A BOX ENCLOSING ALL PARTS SOLD AS A SERVICE ASSEMBLY. A BOX NOT KEYED INCLUDES NON-CURRENT PARTS.

## **KITS**

KIT INFORMATION WILL BE FOUND IMMEDIATELY FOLLOWING THE STORY IN WHICH IT IS USED. THE ILLUSTRATION IS REPEATED WITH ONLY THE KIT PARTS CALLED OUT AND WITH ALL OTHER PARTS SHOWN IN PHANTOM.

## **JDM REMANUFACTURED COMPONENTS**

THE SERVICE PARTS LISTED IN THIS CATALOG ARE INTENDED FOR THE REPAIR OF ORIGINAL EQUIPMENT COMPONENTS. ALTHOUGH MOST SERVICE PARTS MAY BE USED TO REPAIR REMANUFACTURED COMPONENTS, THE REMANUFACTURED DESIGN MAY CHANGE PARTS SUFFICIENTLY SO THAT SERVICE PARTS ARE INADEQUATE OR NOT USABLE.

## **BOLT AND CAP SCREW STRENGTH IDENTIFICATION**

BOLTS AND CAP SCREWS REQUIRED TO HAVE HIGH-STRENGTH QUALITIES EQUIVALENT TO SAE GRADE 8 ARE IDENTIFIED THROUGHOUT THIS CATALOG BY THE DESCRIPTION HS SAE 8. ALL STANDARD BOLTS AND CAP SCREWS ARE SAE GRADE 5 OR LOWER. BOLTS AND CAP SCREWS REQUIRED TO HAVE HIGH-STRENGTH QUALITIES EQUIVALENT TO PROPERTY CLASS 10.9 ARE IDENTIFIED THROUGHOUT THIS CATALOG BY THE DESCRIPTION 10.9. ALL STANDARD BOLTS AND CAP SCREWS ARE PROPERTY CLASS 8.8 OR LOWER.

## **SI UNITS OF MEASURE**

METRIC DIMENSIONS ARE GIVEN, WHERE APPLICABLE, THROUGHOUT THIS PARTS CATALOG.



## TRADEMARKS

THROUGHOUT THIS PARTS CATALOG, YOU WILL FIND THE FOLLOWING DEERE & COMPANY TRADEMARKS:

DIAL-A-SPEED™  
DIAL-A-MATIC™  
HARVESTRAK™  
CONTOUR MASTER™

POSI-TORQ™  
TORQ-GARD SUPREME®  
QUIK-TATCH™

## CHANGE INDICATOR LINE

CHANGES AFFECTING THE ORDERING OF PARTS ARE IDENTIFIED BY VERTICAL LINES MARKED IN THE LEFT-HAND MARGIN OF REVISED PARTS LISTING IMAGES. A LINE IS ALSO AT THE LEFT-HAND EDGE OF THE SAME PART NUMBER IN THE NUMERICAL INDEX TO SHOW THE LOCATION OF REVISED INFORMATION.

## FUNCTION CODE

(EXAMPLE - FC: 5000)

FUNCTION CODES ARE LOCATED ON EACH PAGE IN THE UPPER RIGHT-HAND CORNER IN THE BOX. THE CODE LISTED IS A GROUPING CODE THAT CAN BE USED FOR WARRANTIES AND FOR DTAC TO IDENTIFY CERTAIN AREAS.

## COMPLETE GOODS LISTINGS

COMPLETE GOODS ARE IN BOLD FACE TYPE. ORDER SEPARATELY. DO NOT INCLUDE ON REPLACEMENT PARTS ORDER.

### FOR INDIVIDUAL HEADER PARTS CATALOGS REFER TO:

PC-2104 - PARTS CATALOG FOR JOHN DEERE 900 SERIES PLATFORMS

PC-2210 - PARTS CATALOG FOR JOHN DEERE THREE ROLLER BELT PICK-UP

PC-2212 - PARTS CATALOG FOR JOHN DEERE 918 AND 920 DRAPER PLATFORMS

PC-1747 - PARTS CATALOG FOR JOHN DEERE 50A SERIES ROW-CROP HEADS

PC-1223 - PARTS CATALOG FOR JOHN DEERE 40 SERIES CORN HEADS

PC-2404 - PARTS CATALOG FOR JOHN DEERE 90 SERIES CORN HEADS

SECTION INDEX

SECTION 10 - GENERAL INFORMATION

SECTION 20 - ENGINE FAN, INTERCOOLER AND SCREENS

SECTION 24 - ENGINE

SECTION 30 - FUEL AND AIR

SECTION 40 - ELECTRICAL

SECTION 50 - POWER TRAIN

SECTION 60 - STEERING AND BRAKES

SECTION 70 - HYDRAULICS

SECTION 80 - SEPARATOR SHELL

SECTION 90 - OPERATOR'S STATION

SECTION 110 - FEEDER HOUSE

SECTION 120 - THRESHING AND SEPARATION

SECTION 121 - DRIVES

SECTION 125 - RESIDUE DISPOSAL

SECTION 130 - CLEAN GRAIN ELEVATOR, GRAIN TANK AND UNLOADING AUGER

SECTION 160 - DIAL-A-MATIC HEADER HEIGHT CONTROL

SECTION 170 - DECALS, BELTS AND CHAINS

SECTION 180 - NUMERICAL INDEX

## ALPHABETICAL INDEX

GRID	A	PAGE	GRID	PAGE	
4G11	A/C COMPRESSOR COVER R134A .....	90 - 78	4F9	AIR SUSPENSION KITS, SEAT .....	90 - 50
4G10	A/C COMPRESSOR HOSE .....	90 - 77	4F11	AIR SUSPENSION KITS, SEAT .....	90 - 52
4G11	A/C COMPRESSOR PULLEY R134A .....	90 - 78	4F13	AIR SUSPENSION KITS, SEAT .....	90 - 54
4G9	A/C COMPRESSOR R134A .....	90 - 76	4F5	AIR SUSPENSION, SEAT .....	90 - 46
4G13	A/C COMPRESSOR SEAL KIT R134A .....	90 - 80	2D23	AIR TEMPERATURE SWITCH, INLET .....	40 - 57
4G9	A/C COMPRESSOR MANIFOLD .....	90 - 76	2D18	ALTERNATOR .....	40 - 52
1E22	ACCESS COVER FUEL INJECTION PUMP .....	24 - 68	1E22	ALTERNATOR ADJUSTING STRAP .....	24 - 68
4B16	ACCESS DOOR, ENGINE, HANDRAILS AND RADIATOR DOOR .....	80 - 8	1E22	ALTERNATOR BRACKET .....	24 - 68
4C18	ACCESS SHIELD, L.H., SERVICE .....	80 - 36	2E9	ALTERNATOR FAN .....	40 - 68
4C16	ACCESS SHIELD, R.H., SERVICE .....	80 - 34	2E11	ALTERNATOR MOUNTING .....	40 - 70
3H3	ACCUMULATOR AND MOUNTING, ONE GALLON .....	70 - 48	1E22	ALTERNATOR SUPPORT .....	24 - 68
3H1	ACCUMULATOR AND MOUNTING, ONE-HALF GALLON (SINGLE) .....	70 - 46	2E8	ALTERNATOR, SHEAVE AND BELT - BOSCH .....	40 - 67
3F12	ACCUMULATOR PRESSURE GAUGE AND WIRING HARNESS .....	70 - 2	2C17	ANTENNA, SPEAKERS AND RADIO .....	40 - 30
1F9	ADAPTER, COLD WEATHER STARTING AID .....	30 - 9	5F21	ARM, LOCKOUT, DUAL-RANGE .....	121 - 30
1B16	ADAPTER, ENGINE FAN DRIVE .....	20 - 8	3B21	ARM, STEERING .....	51 - 12
1D12	ADAPTER, OIL COOLER .....	24 - 28	4F19	ARMREST (L.H.) .....	90 - 60
1D11	ADAPTER, OIL COOLER BYPASS .....	24 - 27	4F17	ARMREST ADJUSTING MECHANISM .....	90 - 58
2G19	ADAPTER, TRANSMISSION .....	50 - 11	2C1	ARMREST CONTROL PANEL .....	40 - 14
2D3	ADAPTER, WIRING HARNESS (CONTOUR MASTER) .....	40 - 36	2B23	ARMREST WIRING HARNESS .....	40 - 12
2D5	ADAPTER, WIRING HARNESS (CONTOUR MASTER) .....	40 - 38	4F15	ARMREST WITH GLOVEBOX, R.H. ....	90 - 56
2B23	ADAPTER HARNESS, DIAL-A-MATIC .....	40 - 12	5D19	ARMS, FRAME, PRECLEANER CHAFFER .....	120 - 60
1D6	ADHESIVE,ROCKER ARM COVER GASKET .....	24 - 21	1D5	ARMS, ROCKER .....	24 - 20
4F1	ADJUST FORE-AND-AFT, SEAT .....	90 - 42	6B15	ARMS, TAILBOARD - CHOP-TO-BALE .....	125 - 5A
3E19	ADJUSTABLE REAR AXLE .....	60 - 39	2C1	ASHTRAY .....	40 - 14
3E20	ADJUSTABLE REAR AXLE .....	60 - 40	1E19	ASSEMBLY, CLUTCH (STARTER) .....	24 - 64
3E24	ADJUSTABLE REAR AXLE SPINDLE HOUSING .....	60 - 45	3H23	ASSEMBLY, SIX STACK SOLENOID CONTROL VALVE .....	70 - 72
5G5	ADJUSTING BRACKET, CYLINDER DRIVE, DUAL-RANGE .....	121 - 38	3D21	ATTENUATOR, STEERING .....	60 - 16
4F17	ADJUSTING MECHANISM, ARMREST .....	90 - 58	6F13	AUGER AND CHARGE HOUSING, VERTICAL UNLOADING .....	130 - 36
2E13	ADJUSTING MOTOR, CONCAVE .....	40 - 72	6H5	AUGER BELTS .....	170 - 2
2E7	ADJUSTING MOTOR, SEPARATOR FAN DRIVE .....	40 - 66	6D9	AUGER CHAIN TIGHTENER, LOWER TAILINGS .....	125 - 44
6C14	ADJUSTING SCREW KIT, REEL DRIVE FLOW CONTROL VALVE .....	125 - 25	5C24	AUGER CLEANOUT DOOR, SHOE GRAIN SUPPLY, HANDLES AND LATCHES .....	120 - 40
1F10	AIR CLEANER AND INTAKE TUBES .....	30 - 10	6G13	AUGER COUNTERSHAFT DRIVE, UNLOADING .....	130 - 60
2C10	AIR CONDITIONER AND HEATER SWITCH .....	40 - 23	6G11	AUGER COVERS AND CHANNEL, CROSS .....	130 - 58
1E18	AIR CONDITIONER COMPRESSOR FAN PULLEY .....	24 - 63	6G15	AUGER DRIVE BELT GUIDE, UNLOADING .....	130 - 62
1E18	AIR CONDITIONER COMPRESSOR IDLER PULLEY .....	24 - 63	6D15	AUGER DRIVE SHIELD, UPPER TAILINGS .....	125 - 52
1E18	AIR CONDITIONER COMPRESSOR SUPPORT .....	24 - 63	4C11	AUGER DRIVE SHIELDS (R.H.) .....	80 - 28
2C5	AIR CONDITIONER WIRING HARNESS .....	40 - 18	6D10	AUGER DRIVE TIGHTENER, LOWER TAILINGS .....	125 - 46
4E12	AIR CONDITIONING AND HEATER DUCTS .....	90 - 29	6D15	AUGER DRIVE, UPPER TAILINGS .....	125 - 52
3I15	AIR CONDITIONING CONDENSER AND OIL COOLER .....	70 - 88	6D12	AUGER HOUSING AND PADDLE ASSEMBLY, UPPER TAILINGS .....	125 - 48
4G5	AIR CONDITIONING SYSTEM .....	90 - 72	6F21	AUGER HOUSING, HORIZONTAL UNLOADING (14- AND 17-FT.) .....	130 - 44
4G7	AIR CONDITIONING SYSTEM, COMPRESSOR R134A .....	90 - 74	6F22	AUGER HOUSING, HORIZONTAL UNLOADING (14- AND 17-FT.) .....	130 - 45
4G3	AIR CONDITIONING/HEATER AND PRESSURIZING FAN .....	90 - 70	6E14	AUGER HOUSING, LOADING, UPPER CLEAN GRAIN .....	130 - 12
4G1	AIR CONDITIONING/HEATER HOUSING AND FILTERS .....	90 - 68	6E16	AUGER HOUSING, LOADING, UPPER CLEAN GRAIN .....	130 - 14
1B12	AIR DUCT, ROTARY SCREEN .....	20 - 4	6F19	AUGER HUB SUPPORT AND SWITCH, HORIZONTAL UNLOADING .....	130 - 42
4E11	AIR FILTER AND HOUSING, CAB .....	90 - 28	2E5	AUGER LIGHT, UNLOADING AND GRAIN TANK DUAL LEVEL MONITOR HARNESS .....	40 - 64
2D22	AIR FILTER WARNING SWITCH, ENGINE PLUGGED .....	40 - 56	6G18	AUGER LOWER LUBE BANK, UNLOADING .....	130 - 66
4F5	AIR SEAT SUSPENSION .....	90 - 46	2D13	AUGER SENSOR AND WIRING HARNESS, UNLOADING .....	40 - 46
4F7	AIR SEAT SUSPENSION KITS .....	90 - 48	6F17	AUGER SWIVEL SUPPORT AND BRACES .....	130 - 40
4F9	AIR SEAT SUSPENSION KITS .....	90 - 50	6F15	AUGER SWIVEL, HORIZONTAL UNLOADING .....	130 - 38
4F11	AIR SEAT SUSPENSION KITS .....	90 - 52	6E14	AUGER TRANSITION HOUSING .....	130 - 12
4F13	AIR SEAT SUSPENSION KITS .....	90 - 54	6D3	AUGER TROUGH, LOWER TAILINGS .....	125 - 38
2C5	AIR SEAT WIRING HARNESS .....	40 - 18	6G20	AUGER UPPER LUBE BANK, UNLOADING .....	130 - 68
4F7	AIR SUSPENSION KITS, SEAT .....	90 - 48	2D13	AUGER WIRING HARNESS, UNLOADING .....	40 - 46
			6G3	AUGER, HORIZONTAL UNLOADING (14- AND 17-FT.) .....	130 - 50

## ALPHABETICAL INDEX - CONTINUED

GRID		PAGE	GRID		PAGE
6G5	AUGER, HORIZONTAL UNLOADING (17 FT. AND 20 FT.).....	130 - 52	3B11	BEARINGS, SEALS, SHAFT AND OUTER COVER CAM LOBE MOTOR .....	51 - 2
6G12	AUGER, HORIZONTAL UNLOADING, DRIVE GEARCASE .....	130 - 59	6H8	BEATER BELTS SHEAVES .....	170 - 5
6E18	AUGER, LOADING, CLEAN GRAIN .....	130 - 16	5C23	BEATER COVER .....	120 - 38
6E20	AUGER, LOADING, CLEAN GRAIN FOLD .....	130 - 18	5G15	BEATER DRIVE SHEAVES AND TIGHTENER .....	121 - 48
6H6	AUGER, LOWER TAILINGS, BELTS .....	170 - 3	5C5	BEATER GRATE AND CONCAVE ASSEMBLY.....	120 - 21A
6D1	AUGER, SHAFT AND TIGHTENER, LOWER TAILINGS .....	125 - 36	5B24	BEATER GRATE CURTAIN .....	120 - 16
6D15	AUGER, UPPER TAILINGS.....	125 - 52	5C21	BEATER SHAFT AND DRIVE BELT.....	120 - 36
6F11	AUGER, VERTICAL, LOWER GEAR CASE.....	130 - 34	1B14	BELT ,ENGINE FAN .....	20 - 6
6G9	AUGERS, GRAIN TANK CROSS .....	130 - 56	5H1	BELT PICKUP / REEL DRIVE, PUMP MOUNTING SHEAVE .....	121 - 58
5D1	AUGERS, SHOE GRAIN SUPPLY AND HOUSING.....	120 - 42	1E22	BELT TENSIONER (ALT.) .....	24 - 68
5D3	AUGERS, SHOE GRAIN SUPPLY AND HOUSING.....	120 - 44	2E8	BELT, ALTERNATOR .....	40 - 67
2B15	AUX FIELD LIGHTS SWITCH, OPTIONAL .....	40 - 4	5C21	BELT, DRIVE, SHAFT AND BEATER.....	120 - 36
2B21	AUXILIARY FIELD LIGHTING .....	40 - 10	1B16	BELT, ENGINE FAN DRIVE .....	20 - 8
2G20	AXLE SPACERS (RING AND PINION FINAL DRIVE) .....	50 - 12	4H23	BELT, FAN, DUST, LH FEEDER HOUSE .....	110 - 30
3E21	AXLE SPINDLES, REAR (FIXED AND ADJUSTABLE REAR AXLE).....	60 - 42	4E23	BELT, OPERATOR'S SEAT .....	90 - 40
2H20	AXLE, FINAL DRIVE (RING AND PINION) .....	50 - 40	1B10	BELT, ROTARY SCREEN .....	20 - 2
3E18	AXLE, FIXED REAR .....	60 - 38	4E24	BELT, SEAT - TRAINING SEAT .....	90 - 41
2G18	AXLE, FRONT (RING AND PINION FINAL DRIVE) .....	50 - 10	6H6	BELTS, AIR CONDITIONER COMPRESSOR .....	170 - 3
2G19	AXLE, FRONT (SIDEHILL) (RING AND PINION FINAL DRIVE) .....	50 - 11	6H5	BELTS, AUGER .....	170 - 2
2H21	AXLE, GEAR AND BEARINGS, FINAL DRIVE (RING AND PINION) (SIDEHILL) .....	50 - 41	6H8	BELTS, BEATER .....	170 - 5
3E19	AXLE, REAR, ADJUSTABLE.....	60 - 39	6H6	BELTS, CLEAN GRAIN ELEVATOR.....	170 - 3
3E20	AXLE, REAR, ADJUSTABLE.....	60 - 40	6H5	BELTS, CONVEYOR FEEDER .....	170 - 2
3E17	AXLE, REAR, SUPPORT.....	60 - 36	6H6	BELTS, COOLING FAN.....	170 - 3
			6H6	BELTS, CYLINDER DRIVE .....	170 - 3
			6H6	BELTS, DRIVE, CYLINDER INTERMEDIATE .....	170 - 3
			6H5	BELTS, ENGINE DRIVE .....	170 - 2
			6H7	BELTS, FAN, CLEANING .....	170 - 4
			6H5	BELTS, FEEDER CONVEYOR .....	170 - 2
			6H7	BELTS, FEEDER HOUSE .....	170 - 4
			6H7	BELTS, HEADER AND REEL .....	170 - 4
			6H8	BELTS, LOWER TAILINGS AUGER.....	170 - 5
			6H6	BELTS, LOWER TAILINGS AUGER .....	170 - 3
			6H6	BELTS, ROTARY SCREEN.....	170 - 3
			6H7	BELTS, STRAW CHOPPER .....	170 - 4
			6H7	BELTS, STRAW SPREADER .....	170 - 4
			6H7	BELTS, UNLOADING AUGERS .....	170 - 4
			6H8	BELTS, UNLOADING SYSTEM.....	170 - 5
			6H8	BELTS, UPPER TAILINGS AUGER .....	170 - 5
			6H5	BELTS, WALKER .....	170 - 2
			3H17	BI-DIRECTIONAL MODULE, SOLENOID CONTROL VALVE, REEL LIFT AND CYLINDER SPEED .....	70 - 64
			2C11	BLADE, WIPER (LONG) .....	40 - 24
			3J13	BLOCK SOLENOID, MAIN VALVE .....	70 - 112
			1C16	BLOCK, SHORT.....	24 - 6
			1D3	BOLTS, CYLINDER HEAD .....	24 - 18
			2E9	BOSCH ALTERNATOR AND VOLTAGE REGULATOR (95 AMP) .....	40 - 68
			2E8	BOSCH ALTERNATOR, SHEAVE AND BELT .....	40 - 67
			4E5	BOX, TOOL .....	90 - 22
			6F17	BRACES AND AUGER SWIVEL SUPPORT .....	130 - 40
			1E22	BRACKET, ALTERNATOR .....	24 - 68
			3D18	BRACKET, BRAKE CABLE SUPPORT .....	60 - 13
			4J5	BRACKET, FEEDER CONVEYOR .....	111 - 24
			2E23	BRACKET, REEL SPEED MOTOR.....	40 - 82
			2D7	BRACKET, STRAW CHOPPER SENSOR .....	40 - 40
			6D8	BRACKET, TAILINGS DRIVE AND LOWER TROUGH SUPPORT .....	125 - 43
			6B15	BRACKETS, CHOP-TO-BALE .....	125 - 5A
			5C17	BRACKETS, INDICATOR AND CABLES, CONCAVE ....	120 - 32
			4I3	BRACKETS, LEVELING CABLES AND SHEAVES SIDEHILL .....	110 - 34
			2D15	BRACKETS, LOW SHAFT SPEED SENSORS .....	40 - 48
			3H22	BRACKETS, SOLENOID CONTROL VALVE .....	70 - 70
			3D18	BRAKE CABLE SUPPORT BRACKET .....	60 - 13

### B

5B20	BAR, CYLINDER SHEAR .....	120 - 12
1E9	BASE, FUEL FILTER.....	24 - 54
6F5	BASE, GRAIN TANK .....	130 - 28
1D13	BASE, OIL FILTER .....	24 - 30
2E14	BATTERIES, CABLE AND HOLDDOWN .....	40 - 73
2H17	BEARING CAP AND HOUSING, FINAL DRIVE (RING AND PINION) .....	50 - 37
2H18	BEARING CAP AND HOUSING, FINAL DRIVE (RING AND PINION) (SIDEHILL) .....	50 - 38
5E11	BEARING KIT, STRAW WALKERS .....	120 - 76
1E24	BEARING KIT, UNDERSIZED MAIN BEARING CRANKSHAFT .....	24 - 70
6G7	BEARING PLATE, CROSS AUGER, L.H.....	130 - 54
3B16	BEARING, COVER AND QUILL .....	51 - 7
1C23	BEARING, THRUST.....	24 - 13
2H24	BEARINGS AND PINION, FINAL DRIVE (RING AND PINION) (SIDEHILL) .....	50 - 44
2H21	BEARINGS, AXLE AND GEARS, FINAL DRIVE (RING AND PINION) (SIDEHILL) .....	50 - 41
6D7	BEARINGS, ELEVATOR CONVEYOR CHAIN AND SPROCKETS, TAILINGS .....	125 - 42
2H20	BEARINGS, FINAL DRIVE (RING AND PINION) .....	50 - 40
2H6	BEARINGS, INPUT SHAFT, GEARS AND LUBE PUMP, TRANSMISSION .....	50 - 26
1C23	BEARINGS, MAIN .....	24 - 13
2H22	BEARINGS, PINION AND SHAFTS, FINAL DRIVE (RING AND PINION) .....	50 - 42
2H8	BEARINGS, PINION SHAFT AND GEARS TRANSMISSION .....	50 - 28

## ALPHABETICAL INDEX - CONTINUED

GRID		PAGE	GRID		PAGE
3D11	BRAKE LINES, MASTER CYLINDER AND RESERVOIR .....	60 - 6	6C1	CHAFF SPREADER (DUAL MOTOR) SHIELDS AND HANDLES .....	125 - 12
3D13	BRAKE MASTER CYLINDER .....	60 - 8	6C9	CHAFF SPREADER CONTROL, CHECK VALVE, ROD AND KNOB .....	125 - 20
3D7	BRAKE PEDAL AND FRAME, PARKING .....	60 - 2	6B23	CHAFF SPREADER DISC (DUAL MOTOR) .....	125 - 10
3D9	BRAKE PEDALS AND MASTER CYLINDERS .....	60 - 4	6C15	CHAFF SPREADER LINES AND FITTINGS .....	125 - 26
3D15	BRAKE SHOES AND DRUM .....	60 - 10	6C17	CHAFF SPREADER LINES, HOSES, VALVE AND PUMP .....	125 - 28
3D17	BRAKE SLAVE CYLINDER .....	60 - 12	3F18	CHAFF SPREADER MOTOR (EATON) .....	70 - 10
2E15	BREAKERS, CIRCUIT, ENGINE COMPARTMENT .....	40 - 74	6C5	CHAFF SPREADER MOUNTING SUPPORT .....	125 - 16
1C13	BUSHING, CAMSHAFT .....	24 - 2	6C7	CHAFF SPREADER MOUNTING SUPPORT (SIDEHILL) .....	125 - 18
1D2	BUSHING, CAMSHAFT .....	24 - 17	6C21	CHAFF SPREADER PUMP .....	125 - 32
3D23	BUTTON, EITHER AID START .....	60 - 18	5D21	CHAFFER ELEMENT .....	120 - 62
4F22	BUTTON, EITHER AID START .....	90 - 64	5D23	CHAFFER EXTENSION ELEMENT .....	120 - 64
3D23	BUTTON, HORN .....	60 - 18	5E1	CHAFFER FRAME .....	120 - 66
4F22	BUTTON, HORN .....	90 - 64	5D19	CHAFFER FRAME ARMS, PRECLEANER .....	120 - 60
1D11	BYPASS TUBES, OIL COOLER .....	24 - 27	5D15	CHAFFER FRAME, PRE-CLEANER .....	120 - 56
1D13	BYPASS VALVE, OIL FILTER .....	24 - 30	5D13	CHAFFER, PRECLEANING .....	120 - 54
<b>C</b>					
4E11	CAB AIR FILTER AND HOUSING .....	90 - 28	4J23	CHAIN IDLERS AND SHIELD BRACKETS, DRIVE (SIDEHILL) .....	111 - 42
2B12	CAB DOME LIGHT .....	40 - 1	6D9	CHAIN TIGHTENER, LOWER TAILINGS AUGER .....	125 - 44
4D18	CAB DOOR LATCH .....	90 - 10	6D14	CHAIN TIGHTENER, UPPER TAILINGS DRIVE .....	125 - 50
4D22	CAB FRAME AND SUPPORT .....	90 - 14	6E6	CHAIN, CONVEYOR AND LOWER ELEVATOR, CLEAN GRAIN .....	130 - 4
4D20	CAB GLASS AND DOOR .....	90 - 12	6E8	CHAIN, CONVEYOR AND LOWER ELEVATOR, CLEAN GRAIN .....	130 - 6
4G16	CAB HARDWARE KIT .....	90 - 84	4J5	CHAIN, FEEDER CONVEYOR DRIVE .....	111 - 24
4D16	CAB INTERIOR TRIM PANELS .....	90 - 8	4J7	CHAIN, IDLER SHAFT AND DRUM, FEEDER CONVEYOR, SIDEHILL .....	111 - 26
4E7	CAB L.H. LANDING AND MIRROR .....	90 - 24	6D7	CHAIN, TAILINGS ELEVATOR CONVEYOR, SPROCKETS, BEARINGS .....	125 - 42
4E9	CAB LANDING AND MIRROR, R.H. ....	90 - 26	6G11	CHANNEL AND COVERS, CROSS AUGER .....	130 - 58
2B12	CAB LIGHT, DOME .....	40 - 1	1B22	CHANNEL, RADIATOR MOUNTING .....	20 - 14
4E21	CAB OPERATOR'S SEAT AND BACKREST .....	90 - 38	6F13	CHARGE HOUSING AND VERTICAL UNLOADING AUGER .....	130 - 36
4D10	CAB PANELS AND FLOOR MAT .....	90 - 2	3I24	CHARGE PRESSURE HOSE .....	70 - 98
2B17	CAB POST INSTRUMENT PANEL .....	40 - 6	3J1	CHARGE PRESSURE HOSE (SIDEHILL) .....	70 - 100
4E13	CAB POST INSTRUMENT PANEL .....	90 - 30	2I7	CHARGE PUMP, HYDROSTATIC DRIVE (RING AND PINION) .....	50 - 53
4D14	CAB REAR AND SIDE SEALS .....	90 - 6	6C9	CHECK VALVE, ROD, KNOB AND CONTROL CHAFF SPREADER .....	125 - 20
4D24	CAB ROOF AND SUPPORTS .....	90 - 16	6B17	CHOP-TO-DROP DECLUTCHING LEVER .....	125 - 5C
2B19	CAB ROOF LIGHTS .....	40 - 8	6B18	CHOPPER COVER AND BRACKETS - CHOP-TO-BALE .....	125 - 5D
4F3	CAB SEAT HEIGHT ADJUSTER (VERTICAL CONTROL) .....	90 - 44	6B13	CHOPPER DOOR, STRAW .....	125 - 4
4D12	CAB SOUND DEADENING, FOAM AND SEALS .....	90 - 4	6F11	CHUTE, GRAIN TANK CLEAN OUT .....	130 - 34
2B13	CAB WIRING HARNESS .....	40 - 2	2B17	CIRCUIT BOARD, CAB POST INSTRUMENT PANEL .....	40 - 6
2G10	CABLE, HYDROSTATIC CONTROL LEVER .....	50 - 2	4E13	CIRCUIT BOARD, CAB POST INSTRUMENT PANEL .....	90 - 30
2E14	CABLES, BATTERY .....	40 - 73	2B15	CIRCUIT BOARD, OVERHEAD CONSOLE PANEL .....	40 - 4
5C17	CABLES, BRACKETS AND INDICATOR, CONCAVE .....	120 - 32	2E21	CIRCUIT BOARDS AND CENTRAL ELECTRONICS MODULE .....	40 - 80
2G12	CABLES, HYDROSTATIC DRIVE CONTROL .....	50 - 4	2E15	CIRCUIT BREAKERS, ENGINE COMPARTMENT .....	40 - 74
3B10	CAM LOBE MOTOR .....	51 - 1	1B24	CLAMPS, INTERCOOLER HOSES .....	20 - 16
3B17	CAM, CARRIER AND PISTONS .....	51 - 8	6E23	CLEAN GRAIN ELEVATOR DRIVE TIGHTENER AND IDLER .....	130 - 22
2H5	CAM, TRANS/DIFFERENTIAL SHIFTER .....	50 - 24	6E21	CLEAN GRAIN ELEVATOR GEARCASE AND SHEAVE .....	130 - 20
1D2	CAMSHAFT .....	24 - 17	6E12	CLEAN GRAIN ELEVATOR SHAFT, UPPER, SPROCKET AND SHEAVE .....	130 - 10
1C13	CAMSHAFT BUSHING .....	24 - 2	6F1	CLEAN GRAIN ELEVATOR SHIELDS, UPPER .....	130 - 24
1D2	CAMSHAFT BUSHING .....	24 - 17	6E10	CLEAN GRAIN ELEVATOR, UPPER .....	130 - 8
1D2	CAMSHAFT FOLLOWER .....	24 - 17	6E18	CLEAN GRAIN LOADING AUGER .....	130 - 16
1D5	CAMSHAFT FOLLOWER .....	24 - 20	6E20	CLEAN GRAIN LOADING AUGER, FOLD .....	130 - 18
1D2	CAMSHAFT GEAR .....	24 - 17			
6F11	CAP, GRAIN TANK CLEAN OUT CHUTE .....	130 - 34			
2E9	CAPACITOR, ALTERNATOR .....	40 - 68			
1C13	CAPS, MAIN BEARING .....	24 - 2			
3B19	CAPS, YOKE AND PIVOTS .....	51 - 10			
3B17	CARRIER, PISTONS AND CAM .....	51 - 8			
3C17	CASE DRAIN HYDRAULIC LINES, 4-WHEEL DRIVE .....	51 - 32			
2E21	CENTRAL ELECTRONICS MODULE AND CIRCUIT BOARDS .....	40 - 80			
6C19	CHAFF SPREADER (DUAL MOTOR) HOSES AND LINES .....	125 - 30			
6C3	CHAFF SPREADER (DUAL MOTOR) PAN, WINGS AND SEALS .....	125 - 14			

## ALPHABETICAL INDEX - CONTINUED

GRID		PAGE	GRID		PAGE
6E4	CLEAN GRAIN LOWER AUGER AND HINGED DOOR	130 - 2	4H5	CONTOUR MASTER, FEEDER HOUSE SHELL, WEAR PLATES AND SEALS .....	110 - 12
6E6	CLEAN GRAIN LOWER ELEVATOR AND CONVEYOR CHAIN .....	130 - 4	4H9	CONTOUR MASTER, LOCKOUT ASSEMBLY (OPTIONAL).....	110 - 16
6E8	CLEAN GRAIN LOWER ELEVATOR AND CONVEYOR CHAIN .....	130 - 6	2F9	CONTROL BOX, LEVEL SENSING .....	40 - 92
6F11	CLEAN OUT CHUTE, GRAIN TANK .....	130 - 34	2G12	CONTROL CABLES, HYDROSTATIC DRIVE .....	50 - 4
1F10	CLEANER, AIR AND INTAKE TUBES .....	30 - 10	2C1	CONTROL PANEL, ARMREST .....	40 - 14
5G17	CLEANING FAN DRIVE, SEPARATOR .....	121 - 50	1E4	CONTROL UNIT, ELECTRONIC .....	24 - 48
5D11	CLEANING FAN INTAKE SHIELDS .....	120 - 52	3B23	CONTROL VALVE (4WD) .....	51 - 14
5D5	CLEANING FAN LEAF SCREENS (CORN) .....	120 - 46	6C14	CONTROL VALVE ADJUSTING SCREW KIT, REEL DRIVE FLOW .....	125 - 25
5D7	CLEANING FANS AND SHROUDS .....	120 - 48	3H23	CONTROL VALVE MODULE, SIX STACK SOLENOID ASSEMBLY & MOUNTINGS .....	70 - 72
5D9	CLEANING FANS AND SHROUDS .....	120 - 50	3B24	CONTROL VALVE SOLENOID .....	51 - 15
2F19	CLEANING SHOE LAMP.....	40 - 102	6C11	CONTROL VALVE, FLOW, REEL DRIVE .....	125 - 22
4H7	CLOSURE PLATES, FEEDER HOUSE - CONTOUR MASTER .....	110 - 14	2I9	CONTROL VALVE, HYDROSTATIC DRIVE DISPLACEMENT (RING AND PINION) .....	50 - 56
1E19	CLUTCH ASSEMBLY(STARTER) .....	24 - 64	3F16	CONTROL VALVE, REEL DRIVE FLOW .....	70 - 6
5F11	CLUTCH, HEADER ELECTROMAGNETIC.....	121 - 20	6C13	CONTROL VALVE, REEL DRIVE FLOW, SEAL REPAIR KIT.....	125 - 24
4I24	CLUTCH, SLIP, FEEDER HOUSE .....	111 - 18	3I21	CONTROL VALVE, SOLENOID, ENGINE GEARCASE PRESSURE REGULATOR .....	70 - 94
1F9	COLD WEATHER STARTING AID .....	30 - 9	3H19	CONTROL VALVE, SOLENOID, FOR AUGER SWING..	70 - 67
3E1	COLUMN, STEERING, LOWER .....	60 - 20	6C9	CONTROL, CHECK VALVE, ROD AND KNOB, CHAFF SPREADER .....	125 - 20
3D23	COLUMN, STEERING, UPPER.....	60 - 18	2F1	CONVENIENCE OUTLET .....	40 - 84
4F22	COLUMN, STEERING, UPPER.....	90 - 64	3G5	CONVERSION PARTS, HYDRAULIC, 200 SERIES CUTTING PLATFORM.....	70 - 23
4B22	COMPARTMENT, ENGINE .....	80 - 14	6H5	CONVEYOR AUGER BELTS, .....	170 - 2
4G12	COMPRESSOR HARDWARE KIT R134A .....	90 - 79	5G13	CONVEYOR AUGERS, STRAW WALKER, SIEVE AND CHAFFER DRIVE .....	121 - 46
4G10	COMPRESSOR, A/C, HOSE .....	90 - 77	6E6	CONVEYOR CHAIN AND LOWER ELEVATOR, CLEAN GRAIN.....	130 - 4
6H6	COMPRESSOR, AIR CONDITIONING BELTS.....	170 - 3	6E8	CONVEYOR CHAIN AND LOWER ELEVATOR, CLEAN GRAIN.....	130 - 6
4G7	COMPRESSOR, AIR CONDITIONING SYSTEM R134A .....	90 - 74	4H11	CONVEYOR CHAIN RETURN FLOOR- SIDEHILL FEEDER HOUSE .....	110 - 18
4G9	COMPRESSOR, AIR CONDITIONING, R134A .....	90 - 76	6D7	CONVEYOR CHAIN, SPROCKETS AND BEARINGS, TAILINGS ELEVATOR.....	125 - 42
2E13	CONCAVE ADJUSTING MOTOR .....	40 - 72	1C4	COOLANT HEATER, ENGINE BLOCK.....	20 - 22
5C5	CONCAVE ASSEMBLY AND BEATER GRATE.....	120 - 21A	1B20	COOLANT RECOVERY TANK .....	20 - 12
5C15	CONCAVE INDICATOR.....	120 - 30	1D12	COOLER, ENGINE OIL .....	24 - 28
5C17	CONCAVE INDICATOR, CABLE AND BRACKETS.....	120 - 32	1F8	COOLER, FUEL .....	30 - 8
5C1	CONCAVE, RASP BAR AND GRATE .....	120 - 18	3F23	COOLER, OIL, FEEDER HOUSE .....	70 - 16
5C3	CONCAVE, RASP BAR AND GRATE .....	120 - 20	3G1	COOLER, OIL, FEEDER HOUSE GEARCASE .....	70 - 18
5C11	CONCAVE, SPIKE TOOTH.....	120 - 26	6H6	COOLING FAN BELTS .....	170 - 3
5C9	CONCAVE, SPIKE-TOOTH .....	120 - 24	6B11	CORN CURTAIN AND DEFLECTORS .....	125 - 2
3I15	CONDENSER, AIR CONDITIONING AND OIL COOLER .....	70 - 88	5B18	CORN CYLINDER DOOR (ARGENTINA ONLY).....	120 - 10
1C20	CONNECTING RODS .....	24 - 10	4C24	CORNER SHEET, DOOR, FRONT, (L.H.) .....	80 - 42
2B23	CONNECTOR, HYDRO HANDLE .....	40 - 12	4C20	CORNER SHEET, R H FRONT .....	80 - 38
2F24	CONNECTORS AND TERMINALS, WEATHERPACK ...	40 - 108	4C22	CORNER SHEET, REAR, L H .....	80 - 40
2B13	CONNECTORS, CAB.....	40 - 2	5G7	COUNTERSHAFT DRIVE, SECONDARY.....	121 - 40
1E11	CONNECTORS, ELECTRICAL, WEATHERPACK .....	24 - 56	6G13	COUNTERSHAFT DRIVE, UNLOADING AUGER .....	130 - 60
2D24	CONNECTORS, ETHER START.....	40 - 58	5F7	COUNTERSHAFT GEARCASE, PRIMARY .....	121 - 16
1E6	CONNECTORS, FUEL INJECTION PUMP HOUSING ..	24 - 50	5F9	COUNTERSHAFT GEARCASE, PRIMARY .....	121 - 18
2E1	CONNECTORS, HARNESS, UPPER, FOR ENGINE .....	40 - 60	1C2	COUPLING WITH HUB, ENGINE-TRANSMISSION.....	20 - 20
2D24	CONNECTORS, LOWER HARNESS FOR ENGINE .....	40 - 58	5C23	COVER, BEATER .....	120 - 38
2C9	CONNECTORS, SUPPLEMENTARY TERMINALS .....	40 - 22	6B18	COVER, CHOPPER - CHOP-TO-BALE .....	125 - 5D
2B15	CONSOLE PANEL, OVERHEAD.....	40 - 4	4G11	COVER, COMPRESSOR A/C R134A .....	90 - 78
4H7	CONTOUR MASTER - FEEDER HOUSE FRAME, TILT BEAM & CLOSURE PLATES.....	110 - 14	4B22	COVER, ENGINE .....	80 - 14
4K5	CONTOUR MASTER DRIVESHAFT .....	111 - 48	4B24	COVER, ENGINE .....	80 - 16
3G21	CONTOUR MASTER HYDRAULIC HOSES, L.H SIDE (OPTIONAL).....	70 - 40	1E22	COVER, FUEL INJECTION PUMP ACCESS .....	24 - 68
4I21	CONTOUR MASTER LOCKOUT ADAPTER KIT (BELT PU & 4R CORN HEADS) .....	111 - 14	2I3	COVER, HYDROSTATIC DRIVE PUMP (RING AND PINION) .....	50 - 49
3H14	CONTOUR MASTER SOLENOID CONTROL RELIF VALVE .....	70 - 60	3B13	COVER, INNER .....	51 - 4
3I11	CONTOUR MASTER TILT CYLINDER.....	70 - 84			
3I12	CONTOUR MASTER TILT CYLINDER HOSES AND FITTINGS.....	70 - 85			
2D3	CONTOUR MASTER WIRING HARNESS .....	40 - 36			
2D5	CONTOUR MASTER WIRING HARNESS ADAPTER ...	40 - 38			

## ALPHABETICAL INDEX - CONTINUED

GRID		PAGE	GRID		PAGE
1D12	COVER, OIL COOLER .....	24 - 28	3J4	CYLINDER, LEVELING .....	70 - 103
1D6	COVER, ROCKER ARM .....	24 - 21	3D13	CYLINDER, MASTER, BRAKE .....	60 - 8
211	COVER, SHAFT, DRIVE PUMP, HYDROSTATIC (RING AND PINION) .....	50 - 46	3E13	CYLINDER, STEERING .....	60 - 32
1D20	COVER, THERMOSTAT .....	24 - 38	5B22	CYLINDER, THRESHING, RASP BAR .....	120 - 14
5B10	COVER, THRESHING CYLINDER .....	120 - 2	5C7	CYLINDER, THRESHING, SPIKE TOOTH .....	120 - 22
1D1	COVER, TIMING GEAR .....	24 - 16	3I11	CYLINDER, TILT - CONTOUR MASTER .....	70 - 84
2H5	COVER, TRANS/DIFFERENTIAL .....	50 - 24	3I12	CYLINDER, TILT, HOSES AND FITTINGS - CONTOUR MASTER .....	70 - 85
6G11	COVERS AND CHANNEL, CROSS AUGER .....	130 - 58	3I9	CYLINDER, UNLOADING AUGER SWING HYDRAULIC .....	70 - 82
1C6	CRANKCASE, ENGINE, OIL DRAIN .....	20 - 24	3D9	CYLINDERS, MASTER, AND BRAKE PEDALS .....	60 - 4
5E13	CRANKS, STRAW WALKER, STRAW SPREADER DRIVE AND SHIELD .....	120 - 78			
1C21	CRANKSHAFT .....	24 - 11		<b>D</b>	
1E15	CRANKSHAFT DAMPERS .....	24 - 60	1C21	DAMPER KEY .....	24 - 11
1D1	CRANKSHAFT FRONT OIL SEAL .....	24 - 16	1E15	DAMPERS, CRANKSHAFT .....	24 - 60
1C22	CRANKSHAFT KIT, UNDERSIZE (CONNECTING ROD JOURNAL) .....	24 - 12	6J1	DECALS, FRONT .....	170 - 46
1C24	CRANKSHAFT OIL SEAL AND HOUSING .....	24 - 14	6I22	DECALS, LEFT-HAND .....	170 - 43
1E15	CRANKSHAFT PULLEY AND DAMPERS .....	24 - 60	6J1	DECALS, REAR .....	170 - 46
6G7	CROSS AUGER BEARING PLATE, L.H. ....	130 - 54	6H9	DECALS, SAFETY AND LOCATIONS .....	170 - 6
6G11	CROSS AUGER COVERS AND CHANNEL .....	130 - 58	6H11	DECALS, SAFETY AND LOCATIONS .....	170 - 8
6G9	CROSS AUGERS, GRAIN TANK .....	130 - 56	6H13	DECALS, SAFETY AND LOCATIONS .....	170 - 10
4F21	CUP HOLDER .....	90 - 62	6H15	DECALS, SAFETY AND LOCATIONS .....	170 - 12
5B24	CURTAIN, BEATER GRATE .....	120 - 16	6H17	DECALS, SAFETY AND LOCATIONS .....	170 - 14
5E15	CURTAIN, SEPARATOR (SPIKE-TOOTH CYLINDER) .....	120 - 80	6H19	DECALS, SAFETY AND LOCATIONS - FRENCH .....	170 - 16
5E16	CURTAIN, SEPARATOR, RASP BAR CYLINDER .....	120 - 81	6H21	DECALS, SAFETY AND LOCATIONS - FRENCH .....	170 - 18
6C23	CURTAIN, SPREADER .....	125 - 34	6H23	DECALS, SAFETY AND LOCATIONS - FRENCH .....	170 - 20
6B11	CURTAINS AND DEFLECTORS, CORN .....	125 - 2	6I1	DECALS, SAFETY AND LOCATIONS - FRENCH .....	170 - 22
6F7	CURTAINS, GRAIN TANK .....	130 - 30	6I3	DECALS, SAFETY AND LOCATIONS - FRENCH .....	170 - 24
3G5	CUTTING PLATFORM, 200 SERIES CONVERSION PARTS .....	70 - 23	6I7	DECALS, SAFETY AND LOCATIONS - ITALIAN .....	170 - 28
211	CYLINDER BLOCK .....	50 - 46	6I11	DECALS, SAFETY AND LOCATIONS - ITALIAN .....	170 - 32
1C13	CYLINDER BLOCK FITTINGS .....	24 - 2	6I13	DECALS, SAFETY AND LOCATIONS - ITALIAN .....	170 - 34
2111	CYLINDER BLOCK, HYDROSTATIC DRIVE .....	50 - 58	6I15	DECALS, SAFETY AND LOCATIONS - ITALIAN .....	170 - 36
2113	CYLINDER BLOCK, HYDROSTATIC DRIVE .....	50 - 60	6I17	DECALS, SAFETY AND LOCATIONS - ITALIAN .....	170 - 38
5B10	CYLINDER COVER, THRESHING .....	120 - 2	6I19	DECALS, SAFETY AND LOCATIONS - ITALIAN .....	170 - 40
5B16	CYLINDER DOOR .....	120 - 8	6I21	DECALS, SAFETY AND LOCATIONS - ITALIAN .....	170 - 42
5B18	CYLINDER DOOR, CORN (ARGENTINA ONLY) .....	120 - 10	6I23	DECALS, SAFETY AND LOCATIONS - ITALIAN .....	170 - 44
5G5	CYLINDER DRIVE ADJUSTING BRACKET, DUAL-RANGE .....	121 - 38	6J3	DECALS, TOP .....	170 - 48
5F19	CYLINDER DRIVE GEAR CASE, DUAL-RANGE .....	121 - 28	5H13	DECK, SUPPORTS AND FINS, STRAW CHOPPER .....	121 - 66
5G1	CYLINDER DRIVE INTERMEDIATE SHAFT MOUNTING, DUAL-RANGE .....	121 - 34	6B17	DECLUTCHING LEVER - CHOP-TO-DROP .....	125 - 5C
5G3	CYLINDER DRIVE INTERMEDIATE SHEAVE, DUAL-RANGE .....	121 - 36	6B11	DEFLECTORS AND CURTAINS, CORN .....	125 - 2
5F23	CYLINDER DRIVE TIGHTENER, DUAL-RANGE .....	121 - 32	2B23	DIAL-A-MATIC ADAPTOR HARNESS .....	40 - 12
5F15	CYLINDER DRIVE, SINGLE RANGE .....	121 - 24	6H1	DIAL-A-MATIC ELECTRICAL HARNESS .....	160 - 4
5F17	CYLINDER DRIVE, SLOW SPEED .....	121 - 26	6G23	DIAL-A-MATIC HEADER HEIGHT CONTROL HYDRAULIC LINE AND VALVE BLOCK .....	160 - 2
1D3	CYLINDER HEAD .....	24 - 18	6G24	DIAL-A-MATIC HEADER HEIGHT CONTROL VALVE BLOCK SOLENOID .....	160 - 3
1D3	CYLINDER HEAD BOLTS .....	24 - 18	3G24	DIAL-A-MATIC HEADER HEIGHT CONTROL, VALVE BLOCK SOLENOID .....	70 - 45
1D3	CYLINDER HEAD GASKET .....	24 - 18	2H10	DIFFERENTIAL GEARS AND SHAFTS .....	50 - 30
1E13	CYLINDER HEAD GASKET KIT .....	24 - 58	2H12	DIFFERENTIAL GEARS AND SHAFTS (SIDEHILL) .....	50 - 32
3E14	CYLINDER KIT, STEERING .....	60 - 33	1D17	DIPSTICK, ENGINE OIL .....	24 - 34
1C20	CYLINDER LINERS .....	24 - 10	6B23	DISC, CHAFF SPREADER (DUAL MOTOR) .....	125 - 10
3J9	CYLINDER PINS, LEVELING .....	70 - 108	3J15	DIVIDER MOUNTING, FLOW .....	70 - 114
5B20	CYLINDER SHEAR BAR .....	120 - 12	3J15	DIVIDER VALVE, FLOW .....	70 - 114
3H17	CYLINDER SPEED AND REEL LIFT, SOLENOID CONTROL VALVE .....	70 - 64	4D20	DOOR AND GLASS, CAB .....	90 - 12
3H12	CYLINDER SPEED HYDRAULIC LINES AND HOSES ..	70 - 58	4D18	DOOR LATCH, CAB .....	90 - 10
3D17	CYLINDER, BRAKE SLAVE .....	60 - 12	4C24	DOOR, CORNER SHEET, LEFT - HAND FRONT .....	80 - 42
3I7	CYLINDER, DRIVE, GRAIN TANK UNLOADING .....	70 - 80	5B16	DOOR, CYLINDER .....	120 - 8
3G23	CYLINDER, HEADER LIFT, HYDRAULIC .....	70 - 43	5B18	DOOR, CYLINDER DOOR (ARGENTINA ONLY) .....	120 - 10
3I5	CYLINDER, HYDRAULIC, UNLOADING AUGER SWING, LINES AND HOSES .....	70 - 78	6E4	DOOR, HINGED, CLEAN GRAIN LOWER AUGER .....	130 - 2
3J3	CYLINDER, LEVELING .....	70 - 102	1B22	DOOR, RADIATOR ACCESS .....	20 - 14
			1B12	DOOR, ROTARY SCREEN .....	20 - 4
			6B13	DOOR, STRAW CHOPPER .....	125 - 4
			1D20	DRAIN VALVE, CYLINDER HEAD .....	24 - 38

## ALPHABETICAL INDEX - CONTINUED

GRID		PAGE	GRID		PAGE
1F2	DRAIN VALVE, FUEL TANK .....	30-2	1B14	DRIVES, ENGINE FAN .....	20-6
1F6	DRAIN VALVE, FUEL TANK .....	30-6	5H3	DRIVES, STRAW CHOPPER (FRONT) .....	121-60
1D15	DRAIN VALVE, OIL PAN .....	24-32	5H7	DRIVES, STRAW CHOPPER, (REAR) .....	121-62
1B18	DRAIN VALVE, RADIATOR .....	20-10	5H5	DRIVES, STRAW CHOPPER, FINE CUT (FRONT) .....	121-61A
6G15	DRIVE BELT GUIDE, UNLOADING AUGER .....	130-62	5H9	DRIVES, STRAW CHOPPER, FINE CUT (REAR) .....	121-63A
6D8	DRIVE BRACKET, TAILINGS AND LOWER TROUGH SUPPORT .....	125-43	4K5	DRIVESHAFT, CONTOUR MASTER .....	111-48
4J23	DRIVE CHAIN IDLERS AND SHIELD BRACKETS (SIDEHILL) .....	111-42	3D15	DRUM AND SHOES, BRAKE .....	60-10
6D14	DRIVE CHAIN TIGHTENER, UPPER TAILINGS .....	125-50	4J7	DRUM, CHAIN AND IDLER SHAFT, FEEDER CONVEYOR, SIDEHILL .....	111-26
2G12	DRIVE CONTROL CABLES, HYDROSTATIC .....	50-4	2E5	DUAL LEVEL MONITOR HARNESS, GRAIN TANK AND UNLOADING AUGER LIGHT .....	40-64
2I9	DRIVE DISPLACEMENT CONTROL VALVE, HYDROSTATIC (RING AND PINION) .....	50-56	2G17	DUAL WHEELS, WIDE-SPACED .....	50-9
1C21	DRIVE GEAR, OIL PUMP .....	24-11	5G5	DUAL-RANGE CYLINDER DRIVE ADJUSTING BRACKET .....	121-38
5G11	DRIVE GEARCASE, STRAW WALKER .....	121-44	5F19	DUAL-RANGE CYLINDER DRIVE GEAR CASE .....	121-28
2G10	DRIVE LEVER, CABLE AND SWITCH, HYDROSTATIC .....	50-2	5G1	DUAL-RANGE CYLINDER DRIVE INTERMEDIATE SHAFT MOUNTING .....	121-34
3C24	DRIVE MOTOR, HYDROSTATIC .....	51-40	5G3	DUAL-RANGE CYLINDER DRIVE INTERMEDIATE SHEAVE .....	121-36
2I11	DRIVE MOTOR, HYDROSTATIC (RING AND PINION) .....	50-58	5F23	DUAL-RANGE CYLINDER DRIVE TIGHTENER .....	121-32
2I3	DRIVE PUMP COVER, HYDROSTATIC (RING AND PINION) .....	50-49	5F21	DUAL-RANGE LOCKOUT ARM .....	121-30
2I1	DRIVE PUMP, COVER, SHAFT, HYDROSTATIC (RING AND PINION) .....	50-46	1B12	DUCT, ROTARY SCREEN AIR .....	20-4
3D1	DRIVE PUMP, HYDROSTATIC HYDRAULIC PUMP CONNECTING HARDWARE .....	51-42	4E12	DUCTS, HEATER AND AIR CONDITIONING .....	90-29
3I3	DRIVE PUMP, REEL/BELT PICKUP .....	70-76	4H23	DUST FAN BELT, LH FEEDER HOUSE .....	110-30
5F5	DRIVE SHAFT, GEARCASE AND PRIMARY COUNTERSHAFT .....	121-14	4H21	DUST FAN, LH SIDE FEEDER HOUSE .....	110-28
4K1	DRIVE SHAFT, HEADER - SH - .....	111-44	3F23	DUST SUPPRESSION, LUBE OIL PUMP .....	70-16
4K3	DRIVE SHAFT, HEADER - SH - .....	111-46		<b>E</b>	
2H14	DRIVE SHAFTS, FINAL (SIDEHILL) .....	50-34	1E4	E.C.U. .....	24-48
4C15	DRIVE SHIELD, R.H. REAR .....	80-32	2E19	ECU MOUNTING SUPPORT .....	40-78
4C11	DRIVE SHIELDS, AUGER, (R.H.) .....	80-28	2E17	ECU MOUNTING SUPPORT (SN -XXXXXX) .....	40-76
4G24	DRIVE SHIELDS, CONTOUR MASTER FEEDER HOUSE .....	110-6	3D23	EITHERAID START BUTTON .....	60-18
4C13	DRIVE SHIELDS, MUD AND FAN (L.H.) .....	80-30	4F22	EITHERAID START BUTTON .....	90-64
4G20	DRIVE SHIELDS, SAFETY STOP, FEEDER HOUSE .....	110-2	2G1	ELECTRICAL CONNECTOR SERVICE KIT .....	40-110
4G22	DRIVE SHIELDS, SAFETY STOP, FEEDER HOUSE (SIDEHILL) .....	110-4	2G3	ELECTRICAL CONNECTOR SERVICE KIT .....	40-112
5H11	DRIVE SHIELDS, STRAW CHOPPER .....	121-64	6H1	ELECTRICAL HARNESS, DIAL-A-MATIC .....	160-4
5I1	DRIVE SPROCKETS, STRAW CHOPPER .....	121-78	2F3	ELECTRICAL SERVICE OUTLET .....	40-86
2G25	DRIVE SUPPORT SHIELD, FINAL (SIDEHILL) .....	50-18	1E11	ELECTRICAL TERMINALS AND CONNECTORS, WEATHERPACK .....	24-56
6E23	DRIVE TIGHTENER, ELEVATOR AND IDLER, CLEAN GRAIN .....	130-22	5F11	ELECTROMAGNETIC HEADER CLUTCH .....	121-20
5G23	DRIVE TIGHTENER, FEEDER HOUSE .....	121-56	1E4	ELECTRONIC CONTROL UNIT .....	24-48
4I19	DRIVE TIGHTENER, FIXED SPEED FEEDER HOUSE .....	111-12	1E4	ELECTRONIC FUEL INJECTION PUMP .....	24-48
6D10	DRIVE TIGHTENER, LOWER TAILINGS AUGER .....	125-46	2E21	ELECTRONICS MODULE, CENTRAL AND CIRCUIT BOARDS .....	40-80
4I17	DRIVE TIGHTENER, VARIABLE SPEED .....	111-10	5D21	ELEMENT, CHAFFER .....	120-62
2G14	DRIVE WHEELS .....	50-6	5D23	ELEMENT, CHAFFER EXTENSION .....	120-64
2G15	DRIVE WHEELS .....	50-7	5E3	ELEMENT, SIEVE .....	120-68
2G16	DRIVE WHEELS, HIGH FLOATATION .....	50-8	6D7	ELEVATOR CONVEYOR CHAIN, SPROCKETS AND BEARINGS, TAILINGS .....	125-42
5H1	DRIVE, BELT PICKUP / REEL PUMP MOUNTING SHEAVE .....	121-58	6E23	ELEVATOR DRIVE TIGHTENER AND IDLER, CLEAN GRAIN .....	130-22
5G17	DRIVE, CLEANING FAN, SEPARATOR .....	121-50	6E21	ELEVATOR GEARCASE AND SHEAVE, CLEAN GRAIN .....	130-20
6H6	DRIVE, CYLINDER INTERMEDIATE, BELTS .....	170-3	6D5	ELEVATOR HOUSING, TAILINGS .....	125-40
6H6	DRIVE, CYLINDER, BELTS .....	170-3	6E12	ELEVATOR SHAFT, SPROCKET AND SHEAVE, UPPER CLEAN GRAIN .....	130-10
5G21	DRIVE, FAN, SPEED CONTROL SHEAVE LINKAGE .....	121-54	6F1	ELEVATOR SHIELDS, UPPER CLEAN GRAIN .....	130-24
2H16	DRIVE, FINAL (RING AND PINION) .....	50-36	6H6	ELEVATOR, CLEAN GRAIN BELTS .....	170-3
5G9	DRIVE, GEARCASE, STRAW WALKER .....	121-42	6E6	ELEVATOR, LOWER AND CONVEYOR CHAIN, CLEAN GRAIN .....	130-4
3C5	DRIVE, HYDROSTATIC, LOWER OIL LINES (FOUR WHEEL DRIVE) .....	51-20	6E8	ELEVATOR, LOWER AND CONVEYOR CHAIN, CLEAN GRAIN .....	130-6
3C7	DRIVE, HYDROSTATIC, LOWER OIL LINES (TWO WHEEL DRIVE) (655201- ) .....	51-22	6E10	ELEVATOR, UPPER CLEAN GRAIN .....	130-8
5G7	DRIVE, SECONDARY COUNTERSHAFT .....	121-40			



## ALPHABETICAL INDEX - CONTINUED

GRID		PAGE	GRID		PAGE
4B16	ENGINE ACCESS DOOR, HANDRAILS, AND RADIATOR DOOR.....	80 - 8	1E18	FAN PULLEY, AIR CONDITIONER COMPRESSOR .....	24 - 63
4C1	ENGINE ACCESS PLATFORM AND STEP .....	80 - 18	4G3	FAN, AIR CONDITIONING/HEATER AND PRESSURIZING .....	90 - 70
1C4	ENGINE BLOCKER HEATER .....	20 - 22	2E9	FAN, ALTERNATOR .....	40 - 68
2E15	ENGINE CIRCUIT BREAKERS .....	40 - 74	6H7	FAN, CLEANING, BELTS .....	170 - 4
4B22	ENGINE COMPARTMENT.....	80 - 14	5G17	FAN, DRIVE, CLEANING, SEPARATOR .....	121 - 50
6H5	ENGINE DRIVE BELTS.....	170 - 2	4H21	FAN, DUST, LH SIDE FEEDER HOUSE .....	110 - 28
6H5	ENGINE DRIVE SHEAVES .....	170 - 2	1B14	FAN, ENGINE AND DRIVES.....	20 - 6
1B14	ENGINE FAN AND DRIVES .....	20 - 6	5D7	FANS AND SHROUDS, CLEANING .....	120 - 48
3I17	ENGINE GEARCASE OIL FILTER ASSEMBLY .....	70 - 90	5D9	FANS AND SHROUDS, CLEANING .....	120 - 50
3I19	ENGINE GEARCASE PRESSURE REGULATOR .....	70 - 92	1D14	FC:0407 .....	24 - 31
5E24	ENGINE GEARCASE- SEPARATOR DRIVE WET-CLUTCH AND PUMP DRIVE SHAFT .....	121 - 6	1D22	FC:0410 .....	24 - 40
5E20	ENGINE GEARCASE- STRAW CHOPPER, UNLOADING DRIVE AND SEPARATOR DRIVE GEAR .....	121 - 2	1E4	FC:0413 .....	24 - 48
3D1	ENGINE GEARCASE, HYDROSTATIC DRIVE PUMP, HYDRAULIC PUMP CONNECTING HARDWARE .....	51 - 42	1E6	FC:0413 .....	24 - 50
5F1	ENGINE GEARCASE, SEPARATOR AND PUMP DRIVE .....	121 - 10	1E7	FC:0413 .....	24 - 51
5F3	ENGINE GEARCASE, SEPARATOR AND PUMP DRIVE .....	121 - 12	1D21	FC:0418 .....	24 - 39
5E22	ENGINE GEARCASE, STRAW CHOPPER, UNLOADING DRIVE AND SEPARATOR DRIVE GEAR .....	121 - 4	5B17	FC:5652 .....	120 - 9
1B24	ENGINE INTERCOOLER.....	20 - 16	4H17	FEED PLATE LATCH HANDLE .....	110 - 24
1C1	ENGINE MOUNTS AND REAR SUPPORT .....	20 - 18	6H5	FEEDER CONVEYOR BELTS.....	170 - 2
4F15	ENGINE NEUTRAL SAFETY START SWITCH .....	90 - 56	4J5	FEEDER CONVEYOR BRACKET.....	111 - 24
1C12	ENGINE OIL (TORQ-GARD PLUS-50) .....	24 - 1	4J5	FEEDER CONVEYOR DRIVE CHAIN .....	111 - 24
1D12	ENGINE OIL COOLER .....	24 - 28	4J9	FEEDER CONVEYOR DRIVE CHAIN, TIGHTENER AND GUIDES.....	111 - 28
1D17	ENGINE OIL DIPSTICK.....	24 - 34	4J11	FEEDER CONVEYOR DRIVE CHAIN, TIGHTENER AND GUIDES (SIDEHILL).....	111 - 30
1D17	ENGINE OIL DIPSTICK TUBE .....	24 - 34	4J5	FEEDER CONVEYOR IDLER .....	111 - 24
1D13	ENGINE OIL FILTER.....	24 - 30	4J7	FEEDER CONVEYOR IDLER SHAFT, DRUM AND CHAIN, SIDEHILL.....	111 - 26
2D20	ENGINE OIL PRESSURE SENDING UNIT .....	40 - 54	2F13	FEEDER HOUSE BACKSHAFT SPEED SENSOR .....	40 - 96
1D8	ENGINE OIL PUMP .....	24 - 24	6H7	FEEDER HOUSE BELTS .....	170 - 4
1D10	ENGINE OIL PUMP INTAKE.....	24 - 26	4G24	FEEDER HOUSE DRIVE SHIELDS - CONTOUR MASTER .....	110 - 6
1C18	ENGINE OVERHAUL KIT .....	24 - 8	4G20	FEEDER HOUSE DRIVE SHIELDS AND SAFETY STOP .....	110 - 2
4B24	ENGINE PLATFORM.....	80 - 16	4G22	FEEDER HOUSE DRIVE SHIELDS AND SAFETY STOP (SIDEHILL) .....	110 - 4
2D22	ENGINE PLUGGED AIR FILTER WARNING SWITCH ..	40 - 56	5G23	FEEDER HOUSE DRIVE TIGHTENER.....	121 - 56
4B22	ENGINE RAILS .....	80 - 14	4I19	FEEDER HOUSE DRIVE TIGHTENER (FIXED SPEED) .....	111 - 12
1E13	ENGINE REBUILD GASKET KIT .....	24 - 58	4H23	FEEDER HOUSE DUST FAN BELT, LH .....	110 - 30
1C15	ENGINE SERVICE PARTS, KEY .....	24 - 5	4H21	FEEDER HOUSE DUST FAN, LH SIDE.....	110 - 28
1E21	ENGINE SPEED SENSOR .....	24 - 66	4H15	FEEDER HOUSE FLOOR AND SUPPORT .....	110 - 22
2D20	ENGINE TEMP. SWITCH .....	40 - 54	4H1	FEEDER HOUSE FRAME .....	110 - 8
2D20	ENGINE TEMPERATURE SENDING UNIT .....	40 - 54	4H3	FEEDER HOUSE FRAME, SIDEHILL.....	110 - 10
2D20	ENGINE WIRING HARNESS, (LOWER PARTS).....	40 - 54	4H7	FEEDER HOUSE FRAME, TILT BEAM & CLOSURE PLATES, CONTOUR MASTER.....	110 - 14
1C2	ENGINE-TRANSMISSION COUPLING WITH HUB .....	20 - 20	4J21	FEEDER HOUSE FRONT DRIVE SHAFT, SHEAVE AND MOUNTINGS (FIXED SPEED WITH .....	111 - 40
2D18	ENGINE, HARNESS (UPPER PARTS).....	40 - 52	3G1	FEEDER HOUSE GEARCASE OIL COOLER .....	70 - 18
2D20	ETHER START SOLENOID.....	40 - 54	4I5	FEEDER HOUSE LEVELING CABLES.....	110 - 36
1F9	ETHER STARTING AID.....	30 - 9	4J15	FEEDER HOUSE LOWER SHAFT, PADDLES AND SPROCKET (SIDEHILL) .....	111 - 34
1E1	ETHER STARTING FITTINGS .....	24 - 45	3G3	FEEDER HOUSE OIL COOLER GEARBOX FITTINGS AND HOSES .....	70 - 20
1D25	EXHAUST MANIFOLD GASKETS.....	24 - 44	3F21	FEEDER HOUSE OIL COOLER LUBE OIL PUMP .....	70 - 14
1D25	EXHAUST MANIFOLD HEAT SHIELD .....	24 - 44	3F23	FEEDER HOUSE OIL COOLER, LUBE OIL PUMP.....	70 - 16
1D25	EXHAUST MANIFOLDS.....	24 - 44	4H13	FEEDER HOUSE OUTER CLOSURE FRAME .....	110 - 20
1F12	EXHAUST PIPE AND MUFFLER .....	30 - 12	4J15	FEEDER HOUSE PADDLE SHAFT (SIDEHILL).....	111 - 34
1D3	EXHAUST VALVE SHIELD .....	24 - 18	4J15	FEEDER HOUSE PADDLES, LOWER SHAFT (SIDEHILL).....	111 - 34
1D3	EXHAUST VALVES .....	24 - 18	4H19	FEEDER HOUSE RETURN FLOOR.....	110 - 26
4C7	EXTENSION AND LADDER, REAR .....	80 - 24	4E17	FEEDER HOUSE REVERSER FOOT CONTROL .....	90 - 34
5D23	EXTENSION ELEMENT, CHAFFER .....	120 - 64	4I13	FEEDER HOUSE REVERSER FOOT CONTROL .....	111 - 6
6F9	EXTENSIONS, GRAIN TANK .....	130 - 32	4H5	FEEDER HOUSE SHELL - CONTOUR MASTER .....	110 - 12
			4I24	FEEDER HOUSE SLIP CLUTCH .....	111 - 18
			4I22	FEEDER HOUSE UPPER SHAFT .....	111 - 16
F					
4C13	FAN AND MUD DRIVE SHIELDS (L.H.).....	80 - 30			
5G19	FAN DRIVE SPEED CONTROL LINKAGE.....	121 - 52			
5G21	FAN DRIVE SPEED CONTROL SHEAVE LINKAGE.....	121 - 54			
1E17	FAN DRIVE, FIXED .....	24 - 62			
1E17	FAN PULLEY HUB.....	24 - 62			

## ALPHABETICAL INDEX - CONTINUED

GRID	PAGE	GRID	PAGE
3F20	FEEDER HOUSE VARIABLE DRIVE HYDRAULIC HOSE .....	2F17	FLOODLAMP, FIELD LIGHTS.....
	70 - 12	4H15	FLOOR AND SUPPORT, FEEDER HOUSE.....
4H5	FEEDER HOUSE WEAR PLATES - CONTOUR MASTER .....	4D10	FLOOR MAT AND PANELS, CAB .....
	110 - 12	3F16	FLOW CONTROL VALVE, REEL DRIVE .....
5B12	FEEDER HOUSE/SEPARATOR SEAL, STONE TRAP AND DOOR.....	6C11	FLOW CONTROL VALVE, REEL DRIVE .....
	120 - 4	3J15	FLOW DIVIDER MOUNTING.....
5B14	FEEDER HOUSE/SEPARATOR SEAL, STONE TRAP AND DOOR.....	3J15	FLOW DIVIDER VALVE.....
	120 - 6	3J16	FLOW DIVIDER, LEVELING SYSYEM .....
2B21	FIELD LIGHTING, AUXILIARY .....	1C25	FLYWHEEL.....
2F17	FIELD LIGHTS .....	1C25	FLYWHEEL HUB .....
2B15	FIELD LIGHTS SWITCH, AUX, OPTIONAL .....	4D12	FOAM, SEALS AND SOUND DEADENING, CAB .....
4E11	FILTER AND HOUSING, AIR, CAB .....	1D2	FOLLOWER, CAMSHAFT .....
3I17	FILTER ASSEMBLY, OIL, ENGINE GEARCASE .....	1D5	FOLLOWER, CAMSHAFT .....
1F10	FILTER, AIR AND INTAKE TUBES .....	4E17	FOOT PEDAL, FEEDER HOUSE REVERSER .....
1D13	FILTER, ENGINE OIL .....	4I13	FOOT PEDAL, FEEDER HOUSE REVERSER .....
1E9	FILTER, FUEL .....	4F1	FORE-AND-AFT, SEAT ADJUST .....
2D20	FILTER, HYDRAULIC .....	3C15	FOUR WHEEL DRIVE HYDRAULIC LINES AND HOS ES, L.H. (655201- ).....
2I7	FILTER, HYDROSTATIC DRIVE PUMP .....		51 - 30
3G6	FILTER, MAIN HYDRAULIC .....	5D19	FRAME ARMS, PRECLEANER CHAFFER .....
2D22	FILTER, PLUGGED AIR WARNING SWITCH .....	4D22	FRAME, CAB AND SUPPORT .....
1D1	FILTER, WATER PUMP (WEEP HOLE).....	5E1	FRAME, CHAFFER .....
2C15	FILTER, WINDSHIELD WASHER .....	4H1	FRAME, FEEDER HOUSE .....
4G1	FILTERS, AIR CONDITIONER AND HEATER AND HOUSING.....	4H7	FRAME, FEEDER HOUSE, CONTOUR MASTER .....
	90 - 68	4H3	FRAME, FEEDER HOUSE, SIDEHILL .....
4G1	FILTERS, HEATER AND AIR CONDITIONING AND HOUSING.....	1B22	FRAME, RADIATOR .....
	90 - 68	3E15	FRAME, REAR AXLE TRASH SHIELD .....
2H16	FINAL DRIVE (RING AND PINION).....	4B10	FRAME, SEPARATOR.....
	50 - 36	4B12	FRAME, SEPARATOR.....
2H20	FINAL DRIVE AXLE, GEAR AND BEARINGS (RING AND PINION) .....	5E5	FRAME, SIEVE .....
	50 - 40	2G18	FRONT AXLE (RING AND PINION FINAL DRIVE) .....
2H21	FINAL DRIVE AXLE, GEAR AND BEARINGS (RING AND PINION) (SIDEHILL) .....		50 - 10
	50 - 41	2G19	FRONT AXLE (SIDEHILL) (RING AND PINION FINAL DRIVE) .....
2H17	FINAL DRIVE HOUSING AND BEARING CAP (RING AND PINION) .....		50 - 11
	50 - 37	4C24	FRONT CORNER SHEET AND DOOR (L.H.) .....
2H18	FINAL DRIVE HOUSING AND BEARING CAP (RING AND PINION) (SIDEHILL) .....	4C20	FRONT CORNER SHEET, R H .....
	50 - 38	1D1	FRONT OIL SEAL .....
2G22	FINAL DRIVE INNER CASTING AND PIVOT TUBE (SIDEHILL) (RING AND PINION) .....	4J3	FRONT SHAFT SLIP CLUTCH - FEEDER HOUSE (SIDEHILL).....
	50 - 14		111 - 22
2H24	FINAL DRIVE PINION AND BEARINGS (RING AND PINION) (SIDEHILL) .....	4I15	FRONT SHAFT WITH REVERSER (VARIABLE) .....
	50 - 44	4B20	FRONT SHIELD ASSEMBLY, LEFT SIDE .....
2H22	FINAL DRIVE PINION, SHAFTS AND BEARINGS (RING AND PINION) .....	4B18	FRONT SHIELD ASSEMBLY, RIGHT SIDE .....
	50 - 42	3E3	FRONT STEERING HOSES AND LINES.....
3C22	FINAL DRIVE SHAFT SHIELDS (RING AND PINION) .....	4I9	FRONT VARIABLE DRIVE SHEAVE AND MOUNTINGS .....
	51 - 38		111 - 2
2H14	FINAL DRIVE SHAFTS (SIDEHILL) .....	1D20	FRONT WATER MANIFOLD .....
2G25	FINAL DRIVE SUPPORT SHIELD (SIDEHILL) .....	1E9	FUEL CHECK VALVE .....
	50 - 18	1F8	FUEL COOLER .....
2F21	FINDER LIGHTS, SIDE .....	1E9	FUEL FILTER .....
5H19	FINE CUT ROTOR STRAW CHOPPER (PADDLED NARROW).....	1E9	FUEL FILTER BASE .....
	121 - 72	1E9	FUEL FILTER LINES .....
5H17	FINE CUT ROTOR STRAW CHOPPER (STRAIGHT NARROW).....	1E2	FUEL INJ LINES .....
	121 - 70	1E8	FUEL INJECTION NOZZLE.....
5H5	FINE CUT STRAW CHOPPER DRIVES (FRONT) .....	1E2	FUEL INJECTION NOZZLES .....
5H9	FINE CUT STRAW CHOPPER DRIVES (REAR).....	1E4	FUEL INJECTION PUMP.....
	121 - 63A	2D18	FUEL INJECTION PUMP.....
5C13	FINGER GRATE, SPIKE-TOOTH .....	1E22	FUEL INJECTION PUMP ACCESS COVER .....
5H13	FINS, SUPPORTS AND DECK, STRAW CHOPPER.....	1E6	FUEL INJECTION PUMP HOUSING CONNECTORS ...
3G3	FITTINGS AND HOSES, OIL COOLER, GEARBOX, FEEDER HOUSE.....	1E2	FUEL LEAK-OFF LINES .....
	70 - 20	1E4	FUEL LEAK-OFF LINES .....
6C15	FITTINGS AND LINES, CHAFF SPREADER .....	1F4	FUEL PUMP, WATER SEPARATOR, AND FUEL SENDER .....
1C13	FITTINGS, CYLINDER BLOCK .....		30 - 4
1E1	FITTINGS, ETHER STARTING .....	1F4	FUEL SENDER .....
1F2	FITTINGS, FUEL TANK AND SUPPORTS.....	1E4	FUEL SHUT-OFF SOLENOID (FIP) .....
1F6	FITTINGS, TANK FUEL LINES.....	1F6	FUEL TANK LINES .....
3I12	FITTINGS, TILT CYLINDER - CONTOUR MASTER .....	1F2	FUEL TANK, SUPPORTS, AND FITTINGS .....
1E17	FIXED FAN DRIVE .....	1E7	FUEL TRANSFER PUMP (ROBERT BOSCH).....
3E18	FIXED REAR AXLE .....		24 - 51
4I19	FIXED SPEED FEEDER HOUSE DRIVE TIGHTENER..		
3I22	FLAT O-RING KIT, HYDRAULIC.....		
	70 - 96		

## ALPHABETICAL INDEX - CONTINUED

GRID		PAGE	GRID		PAGE
<b>G</b>					
1D6	GASKET ADHESIVE, ROCKER ARM COVER .....	24 - 21	3I7	GRAIN TANK UNLOADING DRIVE CYLINDER.....	70 - 80
1E13	GASKET KIT, CYLINDER HEAD .....	24 - 58	3I7	GRAIN TANK UNLOADING DRIVE CYLINDER MOUNTING .....	70 - 80
1E13	GASKET KIT, ENGINE REBUILD .....	24 - 58	2E3	GRAIN TANK WIRING HARNESS, LIGHT, LIMIT SWITCH AND LEVEL MONITOR .....	40 - 62
1E13	GASKET KIT, SHORT BLOCK .....	24 - 58	5C1	GRATE AND RASP BAR CONCAVE .....	120 - 18
1D3	GASKET, CYLINDER HEAD .....	24 - 18	5C3	GRATE AND RASP BAR CONCAVE .....	120 - 20
1D22	GASKET, INTAKE MANIFOLD .....	24 - 40	5B24	GRATE CURTAIN, BEATER .....	120 - 16
1D13	GASKET, OIL FILTER HOUSING .....	24 - 30	5C13	GRATE, FINGER, SPIKE-TOOTH.....	120 - 28
1D15	GASKET, OIL PAN .....	24 - 32	2H10	GROUND SPEED SENSOR .....	50 - 30
1D8	GASKET, OIL PUMP .....	24 - 24	2H12	GROUND SPEED SENSOR (SIDEHILL) .....	50 - 32
1D10	GASKET, OIL PUMP INTAKE.....	24 - 26	6B19	GUARD AND MOUNTING, STRAW SPREADER .....	125 - 6
1C24	GASKET, REAR OIL SEAL.....	24 - 14	6G15	GUIDE, UNLOADING AUGER DRIVE BELT .....	130 - 62
1D6	GASKET, ROCKER ARM COVER .....	24 - 21	4J9	GUIDES, TIGHTENER AND FEEDER CONVEYOR DRIVE CHAIN .....	111 - 28
1D20	GASKET, THERMOSTAT .....	24 - 38	4J11	GUIDES, TIGHTENER AND FEEDER CONVEYOR DRIVE CHAIN (SIDEHILL) .....	111 - 30
1D1	GASKET, TIMING GEAR COVER.....	24 - 16	<b>H</b>		
1D23	GASKET, TURBOCHARGER .....	24 - 42	5C24	HANDLE, LATCHES, SHOE GRAIN SUPPLY AUGER CLEANOUT DOOR .....	120 - 40
1D20	GASKET, WATER MANIFOLD .....	24 - 38	6C1	HANDLES AND SHIELDS, CHAFF SPREADER (DUAL MOTOR).....	125 - 12
1D18	GASKET, WATER PUMP .....	24 - 36	4E1	HANDRAILS, OPERATOR'S PIVOTING PLATFORM ....	90 - 18
1D25	GASKETS, EXHAUST MANIFOLD .....	24 - 44	4B16	HANDRAILS, RADIATOR DOOR AND ENGINE ACCESS DOOR .....	80 - 8
4I11	GEAR BOX, REVERSER.....	111 - 4	4G16	HARDWARE KIT, CAB .....	90 - 84
5F19	GEAR CASE, DUAL-RANGE CYLINDER DRIVE.....	121 - 28	4G12	HARDWARE KIT, COMPRESSOR R134A .....	90 - 79
6F11	GEAR CASE, LOWER, VERTICAL AUGER.....	130 - 34	2D24	HARNESS CONNECTORS, LOWER, FOR ENGINE .....	40 - 58
2H21	GEAR, BEARINGS AND AXLE, FINAL DRIVE (RING AND PINION) (SIDEHILL) .....	50 - 41	2E1	HARNESS CONNECTORS, UPPER, FOR ENGINE .....	40 - 60
1D2	GEAR, CAMSHAFT .....	24 - 17	2D18	HARNESS FOR ENGINE (UPPER PARTS).....	40 - 52
2H20	GEAR, FINAL DRIVE (RING AND PINION) .....	50 - 40	2D7	HARNESS FOR REAR LIGHTS AND SHIELDS .....	40 - 40
1E4	GEAR, INJECTION PUMP.....	24 - 48	2D18	HARNESS, FUEL PUMP, ALTERNATOR.....	40 - 52
1C21	GEAR, OIL PUMP DRIVE .....	24 - 11	2E3	HARNESS, GRAIN TANK WIRING, LIGHT, LIMIT SWITCH AND LEVEL MONITOR .....	40 - 62
1D8	GEAR, OIL PUMP DRIVE .....	24 - 24	2C23	HARNESS, LH FRT MAIN, (9510 SN -680200) (9510SH SN -680500) .....	40 - 34
1C25	GEAR, STARTER.....	24 - 15	2D1	HARNESS, LH MAIN FRT (9510 SN 680201- ) (9510SH SN 680501- ) .....	40 - 35A
3G3	GEARBOX FITTINGS AND HOSES, OIL COOLER, FEEDER HOUSE.....	70 - 20	2C21	HARNESS, MAIN LH FRT. (9510 SN 680201- ) (9510SH SN 680501- ) .....	40 - 33A
3D1	GEARCASE .....	51 - 42	2D5	HARNESS, MAIN, LH CTR (9510 SN 680201- ) (9510SH SN 680501- ) .....	40 - 38
5G9	GEARCASE DRIVE, STRAW WALKER .....	121 - 42	2C19	HARNESS, MAIN, LH FRT (9510 SN -680200) (9510SH SN - 680500).....	40 - 32
5F5	GEARCASE, DRIVE SHAFT AND PRIMARY COUNTERSHAFT .....	121 - 14	1E19	HARNESS, STARTER, WIRING .....	24 - 64
6E21	GEARCASE, ELEVATOR AND SHEAVE, CLEAN GRAIN .....	130 - 20	2D16	HARNESS, WIRING AND MONITOR, HARVESTRAK....	40 - 50
5E24	GEARCASE, ENGINE .....	121 - 6	2C5	HARNESS, WIRING, A/C, HEATER AND AIRSEAT .....	40 - 18
5F1	GEARCASE, ENGINE .....	121 - 10	2B23	HARNESS, WIRING, ARMREST.....	40 - 12
5F3	GEARCASE, ENGINE .....	121 - 12	2B13	HARNESS, WIRING, CAB.....	40 - 2
6G12	GEARCASE, HORIZONTAL UNLOADING AUGER DRIVE .....	130 - 59	2D9	HARNESS, WIRING, R.H. MAIN.....	40 - 42
5F7	GEARCASE, PRIMARY COUNTERSHAFT .....	121 - 16	2C3	HARNESS, WIRING, STEERING COLUMN.....	40 - 16
5F9	GEARCASE, PRIMARY COUNTERSHAFT .....	121 - 18	2D3	HARNESS,MAIN, LH CTR (9510 SN -680200) (9510SH SN -680500).....	40 - 36
2H10	GEARS AND SHAFTS, DIFFERENTIAL.....	50 - 30	2B17	HARVESTRAK GAUGE .....	40 - 6
2H12	GEARS AND SHAFTS, DIFFERENTIAL (SIDEHILL).....	50 - 32	4E13	HARVESTRAK GAUGE .....	90 - 30
2H8	GEARS, BEARINGS AND PINION SHAFT, TRANSMISSION .....	50 - 28	2D16	HARVESTRAK MONITOR SYSTEM AND WIRING HARNESS .....	40 - 50
2H6	GEARS, LUBE PUMP, BEARINGS AND INPUT SHAFT, TRANSMISSION .....	50 - 26	1D3	HEAD BOLT KIT .....	24 - 18
2H3	GEARSHIFT LEVER AND LINKAGE .....	50 - 22	1D3	HEAD, CYLINDER .....	24 - 18
4E15	GEARSHIFT LEVER AND LINKAGE .....	90 - 32	6H7	HEADER BELTS .....	170 - 4
4D20	GLASS AND DOOR, CAB.....	90 - 12	4K1	HEADER DRIVE SHAFT - SH - .....	111 - 44
4F15	GLOVEBOX, ARMREST, R.H. ....	90 - 56			
5D17	GRAIN LEAK KIT.....	120 - 58			
6F7	GRAIN TANK AND CURTAINS.....	130 - 30			
6F5	GRAIN TANK BASE.....	130 - 28			
6G9	GRAIN TANK CROSS AUGERS.....	130 - 56			
2E5	GRAIN TANK DUAL LEVEL MONITOR HARNESS AND UNLOADING AUGER LIGHT.....	40 - 64			
6F9	GRAIN TANK EXTENSIONS.....	130 - 32			
6G16	GRAIN TANK SAMPLING TROUGH.....	130 - 64			
6F3	GRAIN TANK TOP.....	130 - 26			

## ALPHABETICAL INDEX - CONTINUED

GRID		PAGE	GRID		PAGE
4K3	HEADER DRIVE SHAFT - SH - .....	111 - 46	3G19	HOSES AND LINES, HYDRAULIC, HEADER LIFT .....	70 - 38
5F11	HEADER ELECTROMAGNETIC CLUTCH .....	121 - 20	3G7	HOSES AND LINES, HYDRAULIC, REEL DRIVE, FRONT .....	70 - 26
6G24	HEADER HEIGHT CONTROL VALVE .....	160 - 3	3F14	HOSES AND LINES, HYDRAULIC, REEL DRIVE, L.H. SIDE .....	70 - 4
6G23	HEADER HEIGHT CONTROL, DIAL-A-MATIC HYDRAULIC LINE AND VALVE BLOCK .....	160 - 2	3G13	HOSES AND LINES, HYDRAULIC, REEL FORE- AND-AFT, FRONT .....	70 - 32
3G24	HEADER HEIGHT CONTROL, DIAL-A-MATIC, VALVE BLOCK SOLENOID .....	70 - 45	3G9	HOSES AND LINES, HYDRAULIC, REEL PUMP .....	70 - 28
6H1	HEADER HEIGHT CONTROL, ELECTRIC HARNESS, DIAL-A-MATIC .....	160 - 4	3C13	HOSES AND LINES, OIL COOLER, HYDROSTATIC ....	51 - 28
3G23	HEADER LIFT CYLINDER, HYDRAULIC .....	70 - 43	3C3	HOSES AND LINES, OIL, HYDROSTATIC DRIVE, LOWER (SIDEHILL 2WD) .....	51 - 18
3G17	HEADER LIFT HYDRAULIC LINES AND HOSES .....	70 - 36	3C1	HOSES AND LINES, OIL, HYDROSTATIC DRIVE, LOWER (4 WHEEL DRIVE) .....	51 - 16
3G19	HEADER LIFT HYDRAULIC LINES AND HOSES .....	70 - 38	3C9	HOSES AND LINES, OIL, HYDROSTATIC DRIVE, LOWER (4 WHEEL DRIVE) .....	51 - 24
3H15	HEADER LIFT MODULE, SOLENOID CONTROL VALVE .....	70 - 62	3J22	HOSES AND LINES, OIL, LEVELING CYLINDER .....	70 - 122
2G23	HEADER LIFT SUPPORT (SIDEHILL) .....	50 - 16	3G11	HOSES AND LINES, REEL LIFT .....	70 - 30
1A9	HEADERS .....	10 - 8	3H7	HOSES AND LINES, RESERVOIR HYDRAULIC UPPER RETURN .....	70 - 52
1F8	HEAT EXCHANGER, FUEL .....	30 - 8	3E3	HOSES AND LINES, STEERING, FRONT .....	60 - 22
1D25	HEAT SHIELD, EXHAUST MANIFOLD .....	24 - 44	3E9	HOSES AND LINES, STEERING, REAR (DUAL CYLINDER) .....	60 - 28
2C10	HEATER AND AIR CONDITIONER SWITCH .....	40 - 23	3E11	HOSES AND LINES, STEERING, REAR (DUAL CYLINDER) .....	60 - 30
4E12	HEATER AND AIR CONDITIONING DUCTS .....	90 - 29	3I5	HOSES AND LINES, UNLOADING AUGER SWING HYDRAULIC CYLINDER .....	70 - 78
4G1	HEATER AND AIR CONDITIONING HOUSING AND FILTERS .....	90 - 68	3I13	HOSES AND LINES, WET CLUTCH OIL COOLER .....	70 - 86
4G14	HEATER SYSTEM .....	90 - 82	3C18	HOSES AND LINES, 4-WHEEL DRIVE (FLOW CONTROL VALVE/CAM LOBE MOTORS) ....	51 - 34
2C5	HEATER WIRING HARNESS .....	40 - 18	3C20	HOSES AND LINES, 4-WHEEL DRIVE (SH9500) (FLOW CONTROL VALVE/CAM LOBE MOTORS) .....	51 - 36
4G3	HEATER/AIR CONDITIONING AND PRESSURIZING FAN .....	90 - 70	1B18	HOSES AND RADIATOR .....	20 - 10
1C4	HEATER, COOLANT, ENGINE BLOCK .....	20 - 22	3I7	HOSES, GRAIN TANK UNLOADING DRIVE CYLINDER .....	70 - 80
4F3	HEIGHT ADJUSTER, CAB SEAT .....	90 - 44	3D21	HOSES, HYDRAULIC STEERING, UPPER AND ATTENUATOR .....	60 - 16
2G16	HIGH FLOATATION DRIVE WHEELS .....	50 - 8	3G21	HOSES, HYDRAULIC, CONTOUR MASTER (L.H.) (OPTIONAL) .....	70 - 40
2E14	HOLDDOWN, BATTERIES .....	40 - 73	1B24	HOSES, INTERCOOLER .....	20 - 16
4F21	HOLDER, CUP .....	90 - 62	6D23	HOSES, LUBE, L.H. .....	125 - 60
4C9	HOOD, REAR .....	80 - 26	6D21	HOSES, LUBE, R.H. .....	125 - 58
6G3	HORIZONTAL UNLOADING AUGER (14- AND 17-FT.) .....	130 - 50	3C5	HOSES, OIL, HYDROSTATIC DRIVE, LOWER (FOUR WHEEL DRIVE) .....	51 - 20
6G5	HORIZONTAL UNLOADING AUGER (17 FT. AND 20 FT.) .....	130 - 52	3C7	HOSES, OIL, HYDROSTATIC DRIVE, LOWER (TWO WHEEL DRIVE) (655201- ) .....	51 - 22
6G12	HORIZONTAL UNLOADING AUGER DRIVE GEARCASE .....	130 - 59	3I12	HOSES, TILT CYLINDER - CONTOUR MASTER .....	70 - 85
6G1	HORIZONTAL UNLOADING AUGER HOUSING (EXPORT) (17 AND 20 FT.) .....	130 - 48	3C11	HOSES, UPPER, HYDROSTATIC DRIVE (FOUR WHEEL DRIVE) .....	51 - 26
6F21	HORIZONTAL UNLOADING AUGER HOUSING (14- AND 17-FT.) .....	130 - 44	6C17	HOSES, VALVE, PUMP AND LINES, CHAFF SPREADER .....	125 - 28
6F22	HORIZONTAL UNLOADING AUGER HOUSING (14- AND 17-FT.) .....	130 - 45	2H17	HOUSING AND BEARING CAP, FINAL DRIVE (RING AND PINION) .....	50 - 37
6F23	HORIZONTAL UNLOADING AUGER HOUSING (20 FT.) .....	130 - 46	2H18	HOUSING AND BEARING CAP, FINAL DRIVE (RING AND PINION) (SIDEHILL) .....	50 - 38
6F19	HORIZONTAL UNLOADING AUGER HUB SUPPORT AND SWITCH .....	130 - 42	4E11	HOUSING AND FILTER, AIR, CAB .....	90 - 28
6F15	HORIZONTAL UNLOADING AUGER SWIVEL .....	130 - 38	5H23	HOUSING AND KNIFEBANK, STRAW CHOPPER .....	121 - 76
2C19	HORN .....	40 - 32	6D12	HOUSING AND PADDLE ASSEMBLY, UPPER TAILINGS AUGER .....	125 - 48
3D23	HORN BUTTON .....	60 - 18	5D1	HOUSING AND SHOE GRAIN SUPPLY AUGERS .....	120 - 42
4F22	HORN BUTTON .....	90 - 64	5D3	HOUSING AND SHOE GRAIN SUPPLY AUGERS .....	120 - 44
4G10	HOSE, A/C COMPRESSOR .....	90 - 77	1E6	HOUSING CONNECTORS, FUEL INJECTION PUMP ..	24 - 50
3I24	HOSE, CHARGE PRESSURE .....	70 - 98	2H5	HOUSING COVER AND SHIFTER CAM TRANSMISSION AND DIFFERENTIAL .....	50 - 24
3J1	HOSE, CHARGE PRESSURE, SIDEHILL .....	70 - 100	4G1	HOUSING, AIR CONDITIONER/HEATER AND FILTERS .....	90 - 68
1C6	HOSE, CRANKCASE OIL DRAIN .....	20 - 24	6F13	HOUSING, CHARGE AND VERTICAL UNLOADING AUGER .....	130 - 36
1F6	HOSE, FUEL TANK .....	30 - 6			
3F20	HOSE, HYDRAULIC, VARIABLE DRIVE, FEEDER HOUSE .....	70 - 12			
6C19	HOSES AND LINES, CHAFF SPREADER (DUAL MOTOR) .....	125 - 30			
3C15	HOSES AND LINES, FOUR WHEEL DRIVE HYDRAU LIC, L.H. (655201- ) .....	51 - 30			
3H10	HOSES AND LINES, HYDRAULIC PRESSURE .....	70 - 56			
3H12	HOSES AND LINES, HYDRAULIC, CYLINDER SPEED .....	70 - 58			
3G17	HOSES AND LINES, HYDRAULIC, HEADER LIFT .....	70 - 36			