

HP4872 -UN-01JAN94



*JOHN DEERE 9410 MAXIMIZER™ COMBINE*

9410 (1998- )

(SPECIFICATIONS AND DESIGN SUBJECT TO CHANGE WITHOUT NOTICE)

## NOTE

FOR 900 SERIES PLATFORM PARTS INFORMATION, REFER TO JOHN DEERE 900 SERIES PLATFORM PARTS CATALOG - PC-2104.

FOR 40 SERIES CORN HEAD PARTS INFORMATION, REFER TO JOHN DEERE 40 SERIES CORN HEAD PARTS CATALOG - PC-1223.

FOR 50A SERIES ROW-CROP HEAD PARTS INFORMATION, REFER TO JOHN DEERE 50A SERIES ROW-CROP HEAD PARTS CATALOG - PC-1747.

FOR THREE-ROLLER BELT PICKUP PARTS INFORMATION, REFER TO JOHN DEERE THREE-ROLLER BELT PICKUP PARTS CATALOG - PC-2210.

FOR 918 AND 920 DRAPER PARTS INFORMATION, REFER TO JOHN DEERE 918 AND 920 DRAPER PLATFORMS PARTS CATALOG - PC-2212.

FOR 90 SERIES CORN HEAD PARTS INFORMATION, REFER TO JOHN DEERE 90 SERIES CORN HEAD PARTS CATALOG - PC-2404.

## IMPORTANT

THIS PARTS CATALOG CONTAINS PARTS INFORMATION FOR THE 9410 MAXIMIZER™ COMBINE. VINTAGE IS DETERMINED BY THE COMBINE SERIAL NUMBER OR THE PRODUCT IDENTIFICATION NUMBER (PIN). IT IS IMPORTANT THAT THE CORRECT NUMBERS BE USED WHEN ORDERING PARTS.

## PRODUCT INFORMATION NUMBER (PIN) PLATE

THE PRODUCT IDENTIFICATION PLATE (PIN) IS LOCATED NEAR RIGHT-HAND SIDE OF THE TOOL BOX.  
AN EXAMPLE OF THE TWO-LINES ON THIS PIN PLATE IS:

HO9410X675000  
COMBINE

(FIRST LINE)

HO - MANUFACTURING UNIT (HARVESTER WORKS)

9410 - MODEL IDENTIFIER

X - CONFIGURATION CODE/MODEL IDENTIFIER SUFFIX

675000 - SEQUENTIAL NUMBER USED IN SERIAL NO. COLUMN

(SECOND LINE)

COMBINE - TYPE OF PRODUCT

*COPYRIGHT (C) 2000. DEERE & COMPANY. MOLINE, ILLINOIS. ALL RIGHTS RESERVED.*

## PARTS LISTING INFORMATION

SERIAL NUMBER OR PRODUCT IDENTIFICATION NUMBER (PIN) INFORMATION SHOWS ON WHICH MACHINES PART MAY BE USED: FOR EXAMPLE:

- THE PART CAN BE USED ON ALL MACHINES.
- 000000 THE PART CAN BE USED ON ALL MACHINES UP TO AND INCLUDING SERIAL NUMBER LISTED.
- 000000- THE PART CAN BE USED ON ALL MACHINES BEGINNING WITH THE SERIAL NUMBER LISTED..
- 000000-000000 THE PART CAN BE USED ON ALL MACHINES BETWEEN AND INCLUDING SERIAL NUMBERS LISTED.

WHEN XXXXXX'S ARE LISTED IN PLACE OF A SERIAL NUMBER, A SERIAL NUMBER CHANGE WAS MADE, BUT THE EXACT SERIAL NUMBER IS NOT AVAILABLE WHEN THE CATALOG WAS PRINTED.

**Thanks very much for your reading,  
Want to get more information,  
Please click here, Then get the complete  
manual**

**JustClickHere** 

**NOTE:**

**If there is no response to click on the link above,  
please download the PDF document first, and then  
click on it.**

**Have any questions please write to me:  
[admin@servicemanualperfect.com](mailto:admin@servicemanualperfect.com)**

## ENGINE SERIAL NUMBER PLATE

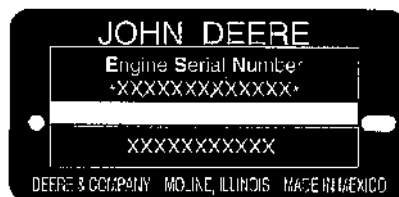
TP58281 -UN-26JAN98



DUBUQUE OPTION



SARAN OPTION



TORREON OPTION

TP58281

- |  |  |
|--|--|
| 1. DESIGNATES ENGINE MANUFACTURER            | T-JOHN DEERE DUBUQUE WORKS   |
| 2. DESIGNATES NUMBER OF CYLINDERS AND LITERS | 6068 (6.8 LITER)   |
| 3. DESIGNATES FUEL TYPE OR SPECIAL CONDITION | DF NON-TURBOCHARGED DIESEL ENGINE<br>TF TURBOCHARGED DIESEL ENGINE |
| 4. DESIGNATES ENGINE SERIAL NUMBER           | 123456   |
| 5. DESIGNATES THE ENGINE APPLICATION         | 6068HH051  |

(SPECIFICATIONS AND DESIGN SUBJECT TO CHANGE WITHOUT NOTICE)

## **DIRECTION ARROW**

ARROWS ARE USED WITH ILLUSTRATIONS TO INDICATE THE FRONT OF THE UNIT. "RIGHT-HAND" AND "LEFT-HAND" SIDES ARE DETERMINED BY FACING IN THE DIRECTION OF MACHINE FORWARD TRAVEL.

## **BOX-ENCLOSED ILLUSTRATIONS**

A KEY NUMBER, SHOWN IN THE PARTS LIST, IS ASSIGNED TO A BOX ENCLOSING ALL PARTS SOLD AS A SERVICE ASSEMBLY. A BOX NOT KEYED INCLUDES NON-CURRENT PARTS.

## **KITS**

KIT INFORMATION WILL BE FOUND IMMEDIATELY FOLLOWING THE STORY IN WHICH IT IS USED. THE ILLUSTRATION IS REPEATED WITH ONLY THE KIT PARTS CALLED OUT AND WITH ALL OTHER PARTS SHOWN IN PHANTOM.

## **JDM REMANUFACTURED COMPONENTS**

THE SERVICE PARTS LISTED IN THIS CATALOG ARE INTENDED FOR THE REPAIR OF ORIGINAL EQUIPMENT COMPONENTS. ALTHOUGH MOST SERVICE PARTS MAY BE USED TO REPAIR REMANUFACTURED COMPONENTS, THE REMANUFACTURED DESIGN MAY CHANGE PARTS SUFFICIENTLY SO THAT SERVICE PARTS ARE INADEQUATE OR NOT USABLE.

## **BOLT AND CAP SCREW STRENGTH IDENTIFICATION**

BOLTS AND CAP SCREWS REQUIRED TO HAVE HIGH-STRENGTH QUALITIES EQUIVALENT TO SAE GRADE 8 ARE IDENTIFIED THROUGHOUT THIS CATALOG BY THE DESCRIPTION HS SAE 8. ALL STANDARD BOLTS AND CAP SCREWS ARE SAE GRADE 5 OR LOWER. BOLTS AND CAP SCREWS REQUIRED TO HAVE HIGH-STRENGTH QUALITIES EQUIVALENT TO PROPERTY CLASS 10.9 ARE IDENTIFIED THROUGHOUT THIS CATALOG BY THE DESCRIPTION HS 10.9. ALL STANDARD BOLTS AND CAP SCREWS ARE PROPERTY CLASS 8.8 OR LOWER.

## **SI UNITS OF MEASURE**

METRIC DIMENSIONS ARE GIVEN, WHERE APPLICABLE, THROUGHOUT THIS PARTS CATALOG.

## TRADEMARKS

THROUGHOUT THIS PARTS CATALOG, YOU WILL FIND THE FOLLOWING DEERE & COMPANY TRADEMARKS:

DIAL-A-SPEED™  
DIAL-A-MATIC™  
HARVESTRAK™  
CONTOUR MASTER™

POSI-TORQ™  
TORQ-GARD SUPREME®  
QUIK-TATCH™

## CHANGE INDICATOR LINE

CHANGES AFFECTING THE ORDERING OF PARTS ARE IDENTIFIED BY VERTICAL LINES MARKED IN THE LEFT-HAND MARGIN OF REVISED PARTS LISTING IMAGES. A LINE IS ALSO AT THE LEFT-HAND EDGE OF THE SAME PART NUMBER IN THE NUMERICAL INDEX TO SHOW THE LOCATION OF REVISED INFORMATION.

## FUNCTION CODE

(EXAMPLE - FC: 5000)

FUNCTION CODES ARE LOCATED ON EACH PAGE IN THE UPPER RIGHT-HAND CORNER IN THE BOX. THE CODE LISTED IS A GROUPING CODE THAT CAN BE USED FOR WARRANTIES AND FOR DTAC TO IDENTIFY CERTAIN AREAS.

## COMPLETE GOODS LISTINGS

COMPLETE GOODS ARE IN BOLD FACE TYPE. ORDER SEPARATELY. DO NOT INCLUDE ON REPLACEMENT PARTS ORDER.

### FOR INDIVIDUAL HEADER PARTS CATALOGS REFER TO:

PC-2104 - PARTS CATALOG FOR JOHN DEERE 900 SERIES PLATFORMS

PC-2210 - PARTS CATALOG FOR JOHN DEERE THREE ROLLER BELT PICK-UP

PC-2212 - PARTS CATALOG FOR JOHN DEERE 918 DRAPER PLATFORMS

PC-1747 - PARTS CATALOG FOR JOHN DEERE 50A SERIES ROW-CROP HEADS

PC-1223 - PARTS CATALOG FOR JOHN DEERE 40 SERIES CORN HEADS

PC-2404 - PARTS CATALOG FOR JOHN DEERE 90 SERIES CORN HEADS



SECTION INDEX

SECTION 10 - GENERAL INFORMATION

SECTION 20 - ENGINE FAN, INTERCOOLER AND SCREENS

SECTION 24 - ENGINE

SECTION 30 - FUEL AND AIR

SECTION 40 - ELECTRICAL

SECTION 50 - POWER TRAIN

SECTION 60 - STEERING AND BRAKES

SECTION 70 - HYDRAULICS

SECTION 80 - SEPARATOR SHELL

SECTION 90 - OPERATOR'S STATION

SECTION 110 - FEEDER HOUSE

SECTION 120 - THRESHING AND SEPARATION

SECTION 121 - DRIVES

SECTION 125 - RESIDUE DISPOSAL

SECTION 130 - CLEAN GRAIN ELEVATOR, GRAIN TANK AND UNLOADING AUGER

SECTION 160 - DIAL-A-MATIC HEADER HEIGHT CONTROL

SECTION 170 - DECALS, BELTS AND CHAINS

SECTION 180 - NUMERICAL INDEX

**ALPHABETICAL INDEX**

GRID	A	PAGE	GRID	PAGE
3G7	A/C COMPRESSOR COVER R134A .....	90 - 79	1I2	ALTERNATOR, VOLTAGE REGULATOR (95 AMP) BOSCH..... 40 - 62
3G6	A/C COMPRESSOR HOSE .....	90 - 77	1G15	ANTENNA, SPEAKERS AND RADIO .....
3G5	A/C COMPRESSOR MANIFOLD.....	90 - 76	4F19	ARM, LOCKOUT, DUAL-RANGE .....
3G7	A/C COMPRESSOR PULLEY R134A.....	90 - 79	3F15	ARMREST (L.H.) .....
3G5	A/C COMPRESSOR R134A .....	90 - 76	3F13	ARMREST ADJUSTING MECHANISM (R.H.) .....
3G9	A/C COMPRESSOR SEAL KIT.....	90 - 81	1G1	ARMREST CONTROL PANEL .....
1B16	A/C CONDENSER, AIR INTER COOLER AND RADIATOR WITH OIL COOLER .....	20 - 15	1F24	ARMREST PANEL, OPERATOR'S .....
1H15	A/C HIGH PRESSURE SWITCH, UPPER PARTS .....	40 - 50	1F24	ARMREST ROCKER SWITCHES.....
1C10	ACCESS COVER, INJECTION PUMP GEAR .....	24 - 8	1F22	ARMREST WIRING HARNESS.....
2H13	ACCUMULATOR AND MOUNTING, ONE GALLON .....	70 - 32	3F11	ARMREST WITH GLOVE BOX (R.H.).....
2H13	ACCUMULATOR HOSES AND LINES (ONE GALLON).....	70 - 32	4D15	ARMS, FRAME, PRECLEANER CHAFFER .....
2G9	ACCUMULATOR PRESSURE GAUGE.....	70 - 2	1C7	ARMS, ROCKER .....
2G9	ACCUMULATOR PRESSURE GAUGE WIRING HARNESS .....	70 - 2	2D5	ARMS, STEERING, CAM LOBE MOTOR (STEERABLE MOTOR).....
2H11	ACCUMULATOR, ONE-HALF GALLON (SINGLE).....	70 - 30	1F24	ASHTRAY.....
1H1	ADAPTER, WIRING HARNESS (CONTOUR MASTER)	40 - 36	2I8	ASSEMBLY, SIX STACK SOLENOID CONTROL VALVE .....
1H3	ADAPTER, WIRING HARNESS (CONTOUR MASTER)	40 - 38	5E3	AUGER BELTS .....
1D17	ADAPTER,ENGINE COOLANT .....	24 - 40	5D7	AUGER COVERS AND CHANNEL, CROSS .....
2F19	ADJUSTABLE REAR AXLE.....	60 - 37	4C20	AUGER DOOR.....
2G1	ADJUSTABLE REAR AXLE STEERING TIE RODS .....	60 - 44	3C1	AUGER DRIVE MUD SHIELDS (R-H SIDE) .....
3E21	ADJUSTER, OPERATOR'S SEAT LEVER .....	90 - 42	4J16	AUGER DRIVE SHIELD, UPPER TAILINGS .....
4G3	ADJUSTING BRACKET, CYLINDER DRIVE, INTERMEDIATE.....	121 - 36	4J16	AUGER DRIVE, UPPER TAILINGS .....
3F13	ADJUSTING MECHANISM, ARMREST (R.H.).....	90 - 58	5B15	AUGER HOUSING, LOADING, UPPER CLEAN GRAIN .....
1I4	ADJUSTING MOTOR, CONCAVE.....	40 - 64	5B17	AUGER HOUSING, LOADING, UPPER CLEAN GRAIN .....
1H25	ADJUSTING MOTOR, SEPARATOR FAN DRIVE .....	40 - 60	1H11	AUGER SENSOR AND WIRING HARNESS, UNLOADING .....
1D24	ADJUSTING STRAP, ALTERNATOR .....	24 - 48	5C15	AUGER SWIVEL SUPPORT AND BRACES .....
1E23	AIR CLEANER AND INTAKE TUBES.....	30 - 10	5B15	AUGER TRANSITION HOUSING .....
1H15	AIR CLEANER PLUGGED SWITCH, UPPER PARTS .....	40 - 50	4J5	AUGER TROUGH, LOWER TAILINGS.....
1E12	AIR CONDITIOING COMPRESSOR BRACKET.....	24 - 62	1H11	AUGER WIRING HARNESS, UNLOADING .....
1G7	AIR CONDITIONER AND HEATER SWITCH.....	40 - 22	5C11	AUGER, GRAIN TANK, VERTICAL UNLOADING .....
1G5	AIR CONDITIONER WIRING HARNESS .....	40 - 20	5C24	AUGER, HORIZONTAL UNLOADING (14- AND 17-FT.).....
3E8	AIR CONDITIONING AND HEATER DUCTS .....	90 - 29	5D1	AUGER, HORIZONTAL UNLOADING (17-FT.).....
2J1	AIR CONDITIONING CONDENSER AND OIL COOLER .....	70 - 70	5C19	AUGER, HORIZONTAL UNLOADING, DRIVE GEARCASE .....
3G1	AIR CONDITIONING SYSTEM .....	90 - 72	5B19	AUGER, LOADING, CLEAN GRAIN .....
3G3	AIR CONDITIONING SYSTEM R134A REFRIGERANT .....	90 - 74	5B21	AUGER, LOADING, CLEAN GRAIN FOLD .....
3F24	AIR CONDITIONING/HEATER AND PRESSURIZING FAN .....	90 - 70	4J3	AUGER, LOWER TAILINGS .....
3F22	AIR CONDITIONING/HEATER HOUSING AND FILTERS.....	90 - 68	5E4	AUGER, LOWER TAILINGS, BELTS .....
1D9	AIR INTAKE MANIFOLD .....	24 - 32	5D10	AUGER, UNLOADING, DRIVE BELT GUIDE.....
1B16	AIR INTER COOLER, RADIATOR WITH OIL COOLER AND A/C CONDENSER .....	20 - 15	4J16	AUGER, UPPER TAILINGS.....
3F1	AIR SEAT SUSPENSION .....	90 - 46	5D5	AUGERS, GRAIN TANK CROSS .....
3F3	AIR SEAT SUSPENSION KITS.....	90 - 48	4C21	AUGERS, SHOE GRAIN SUPPLY AND HOUSING.....
3F5	AIR SEAT SUSPENSION KITS.....	90 - 50	4C23	AUGERS, SHOE GRAIN SUPPLY AND HOUSING.....
3F7	AIR SEAT SUSPENSION KITS.....	90 - 52	1F14	AUX FIELD LIGHTS SWITCH, OPTIONAL .....
3F9	AIR SEAT SUSPENSION KITS.....	90 - 54	1F20	AUXILIARY FIELD LIGHTING .....
1G5	AIR SEAT WIRING HARNESS .....	40 - 20	2B12	AXLE SPACERS (RING AND PINION FINAL DRIVE) .....
3F3	AIR SUSPENSION KITS, SEAT .....	90 - 48	2C1	AXLE, FINAL DRIVE (RING AND PINION) .....
3F5	AIR SUSPENSION KITS, SEAT .....	90 - 50	2B11	AXLE, FRONT .....
3F7	AIR SUSPENSION KITS, SEAT .....	90 - 52	2F19	AXLE, REAR, ADJUSTABLE.....
3F9	AIR SUSPENSION KITS, SEAT .....	90 - 54	2F20	AXLE, REAR, SPINDLES .....
3F1	AIR SUSPENSION, SEAT .....	90 - 46	2F17	AXLE, REAR, SUPPORT.....
1D24	ALTERNATOR ADJUSTING STRAP.....	24 - 48		<b>B</b>
1D24	ALTERNATOR MOUNTING BRACKETS .....	24 - 48	1J11	BACKSHAFT SPEED SENSOR, FEEDER HOUSE.....
1I1	ALTERNATOR, SHEAVE AND BELT BOSCH.....	40 - 61	5C5	BASE, GRAIN TANK .....
			1I6	BATTERIES, CABLE AND HOLDDOWN .....

## ALPHABETICAL INDEX - CONTINUED

GRID		PAGE	GRID		PAGE
4E7	BEARING KIT, STRAW WALKERS .....	120 - 76	1D24	BRACKETS, ALTERNATOR MOUNTING .....	24 - 48
2C24	BEARING, COVER AND QUILL (STEERABLE MOTOR).....	50 - 49	4C11	BRACKETS, CONCAVE INDICATOR AND CABLE .....	120 - 32
1C8	BEARING,CRANKSHAFT THRUST .....	24 - 6	1G8	BRACKETS, LOW SHAFT SPEED SENSORS .....	40 - 23
2B25	BEARINGS, FINAL DRIVE (RING AND PINION) .....	50 - 23	2I10	BRACKETS, SOLENOID CONTROL VALVE .....	70 - 54
2C1	BEARINGS, FINAL DRIVE (RING AND PINION) .....	50 - 24	2E20	BRAKE CABLE SUPPORT BRACKET .....	60 - 13
2C2	BEARINGS, FINAL DRIVE (RING AND PINION) .....	50 - 26	2E15	BRAKE CYLINDER, MASTER .....	60 - 8
1C8	BEARINGS, MAIN .....	24 - 6	2E11	BRAKE CYLINDERS, MASTER AND BRAKE PEDALS .....	60 - 4
4J9	BEARINGS, TAILINGS ELEVATOR CONVEYOR .....	125 - 40	2E13	BRAKE LINES, MASTER CYLINDER AND RESERVOIR .....	60 - 6
2B18	BEARINGS, TRANSMISSION .....	50 - 16	2E9	BRAKE PEDAL AND SEAL, PARKING .....	60 - 2
2B20	BEARINGS, TRANSMISSION PINION SHAFT.....	50 - 18	2E11	BRAKE PEDALS AND CYLINDERS, MASTER .....	60 - 4
1C12	BEARINGS,CONNECTING ROD .....	24 - 10	2E17	BRAKE SHOES AND DRUM (LEFT-HAND ILLUSTRATED).....	60 - 10
5E6	BEATER BELTS SHEAVES .....	170 - 5	2E19	BRAKE SLAVE CYLINDER .....	60 - 12
4C17	BEATER COVER .....	120 - 38	1I8	BREAKERS, CIRCUIT, ENGINE COMPARTMENT .....	40 - 68
4G13	BEATER DRIVE SHEAVES AND TIGHTENER .....	121 - 46	<b>C</b>		
4B23	BEATER GRATE AND CONCAVE ASSEMBLY.....	120 - 20	3E7	CAB AIR FILTER AND HOUSING .....	90 - 28
4B19	BEATER GRATE CURTAIN .....	120 - 16	1F11	CAB DOME LIGHT .....	40 - 1
4C15	BEATER SHAFT AND DRIVE BELT.....	120 - 36	3D16	CAB DOOR AND GLASS .....	90 - 12
5D10	BELT GUIDE, UNLOADING AUGER DRIVE .....	130 - 60	3D14	CAB DOOR LATCH .....	90 - 10
4G23	BELT PICKUP / REEL DRIVE, PUMP MOUNTING SHEAVE.....	121 - 56	3D6	CAB FLOOR MAT .....	90 - 2
1I1	BELT, ALTERNATOR AND SHEAVE BOSCH.....	40 - 61	3D18	CAB FRAME AND SUPPORT .....	90 - 14
4C15	BELT, DRIVE, SHAFT AND BEATER.....	120 - 36	3D16	CAB GLASS AND DOOR .....	90 - 12
3I11	BELT, FAN, DUST, LH FEEDER HOUSE .....	110 - 48	3G12	CAB HARDWARE KIT .....	90 - 84
3E19	BELT, OPERATOR'S SEAT .....	90 - 40	3D12	CAB INTERIOR TRIM PANELS .....	90 - 8
3E20	BELT, SEAT - TRAINING SEAT .....	90 - 41	3E3	CAB L.H. LANDING AND MIRROR .....	90 - 24
5E4	BELTS, AIR CONDITIONER COMPRESSOR .....	170 - 3	3E5	CAB LANDING AND MIRROR (R.H.).....	90 - 26
5E3	BELTS, AUGER .....	170 - 2	1F11	CAB LIGHT, DOME .....	40 - 1
5E6	BELTS, BEATER .....	170 - 5	3E17	CAB OPERATOR'S SEAT AND BACKREST .....	90 - 38
5E4	BELTS, CLEAN GRAIN ELEVATOR.....	170 - 3	3D6	CAB PANELS AND FLOOR MAT .....	90 - 2
5E3	BELTS, CONVEYOR FEEDER .....	170 - 2	1F16	CAB POST INSTRUMENT PANEL .....	40 - 6
5E4	BELTS, COOLING FAN.....	170 - 3	3E9	CAB POST INSTRUMENT PANEL .....	90 - 30
5E4	BELTS, CYLINDER DRIVE .....	170 - 3	3D10	CAB REAR AND SIDE SEALS .....	90 - 6
5E4	BELTS, DRIVE, CYLINDER INTERMEDIATE .....	170 - 3	3D20	CAB ROOF AND SUPPORTS.....	90 - 16
5E3	BELTS, ENGINE DRIVE .....	170 - 2	1F18	CAB ROOF LIGHTS .....	40 - 8
5E5	BELTS, FAN, CLEANING .....	170 - 4	3E23	CAB SEAT HEIGHT ADJUSTER (VERTICAL CONTROL).....	90 - 44
5E3	BELTS, FEEDER CONVEYOR .....	170 - 2	3D8	CAB SOUND DEADENING, FOAM AND SEALS.....	90 - 4
5E5	BELTS, FEEDER HOUSE .....	170 - 4	1F12	CAB WIRING HARNESS.....	40 - 2
5E5	BELTS, HEADER AND REEL .....	170 - 4	3D16	CAB, COMPLETE .....	90 - 12
5E6	BELTS, LOWER TAILINGS AUGER.....	170 - 5	4C11	CABLE, CONCAVE INDICATOR, AND BRACKETS .....	120 - 32
5E4	BELTS, LOWER TAILINGS AUGER .....	170 - 3	1I20	CABLE, WIRING .....	40 - 80
5E4	BELTS, ROTARY SCREEN.....	170 - 3	1I6	CABLES, BATTERY.....	40 - 66
5E5	BELTS, STRAW CHOPPER .....	170 - 4	2B8	CABLES, HYDROSTATIC DRIVE CONTROL .....	50 - 4
5E5	BELTS, STRAW SPREADER .....	170 - 4	2C18	CAM LOBE MOTOR (STEERABLE MOTOR) .....	50 - 43
5E5	BELTS, UNLOADING AUGERS .....	170 - 4	2D1	CAM, CARRIER, AND PISTON (STEERABLE MOTOR).....	50 - 50
5E6	BELTS, UNLOADING SYSTEM.....	170 - 5	1C9	CAMSHAFT .....	24 - 7
5E6	BELTS, UPPER TAILINGS AUGER .....	170 - 5	1C7	CAMSHAFT FOLLOWERS .....	24 - 5
5E3	BELTS, WALKER.....	170 - 2	1C9	CAMSHAFT GEAR.....	24 - 7
2I3	BI-DIRECTIONAL MODULE, SOLENOID CONTROL VALVE, REEL LIFT AND CYLINDER SPEED .....	70 - 46	5C9	CAP, GRAIN TANK CLEAN OUT CHUTE .....	130 - 32
1C14	BLOCK, CYLINDER .....	24 - 12	1C19	CAP,ENGINE OIL FILL .....	24 - 18
1B17	BLOCK, ENGINE COOLANT HEATER.....	20 - 16	1C14	CAP,MAIN BEARING .....	24 - 12
2C17	BLOCK, VALVE .....	50 - 42	2D3	CAPS, YOKE AND PIVOTS (STEERABLE MOTOR) ....	50 - 52
1C16	BLOCK,ENGINE SHORT.....	24 - 14	2D1	CARRIER, PISTON, AND CAM (STEERABLE MOTOR).....	50 - 50
1I12	BOARDS, ELECTRONIC .....	40 - 72	2D21	CASE DRAIN, 4-WHEEL DRIVE, HYDRAULIC LINES.....	50 - 70
1I2	BOSCH ALTERNATOR AND VOLTAGE REGULATOR (95 AMP) .....	40 - 62	5C9	CASE, VERTICAL AUGER LOWER GEAR .....	130 - 32
3E1	BOX, TOOL .....	90 - 22	1F16	CDC (COMBINE DATA CENTER) .....	40 - 6
2E20	BRACKET, BRAKE CABLE SUPPORT .....	60 - 13	3E9	CDC (COMBINE DATA CENTER) .....	90 - 30
3H22	BRACKET, FEEDER CONVEYOR .....	110 - 34	4I21	CHAFF SPREADER (DUAL MOTOR) HOSES AND LINES.....	125 - 28
2H11	BRACKET, SINGLE ACCUMULATOR MOUNTING .....	70 - 30			
1H5	BRACKET, STRAW CHOPPER SENSOR .....	40 - 40			
1E12	BRACKET,AIR CONDITIOING COMPRESSOR .....	24 - 62			

## ALPHABETICAL INDEX - CONTINUED

GRID		PAGE	GRID		PAGE
417	CHAFF SPREADER (DUAL MOTOR) PAN, WINGS AND SEALS.....	125 - 14	5C9	CLEAN OUT CHUTE, GRAIN TANK .....	130 - 32
415	CHAFF SPREADER (DUAL MOTOR) SHIELDS AND HANDLES .....	125 - 12	1E23	CLEANER, AIR AND INTAKE TUBES .....	30 - 10
4111	CHAFF SPREADER CONTROL, CHECK VALVE, ROD AND KNOB.....	125 - 18	4G15	CLEANING FAN DRIVE, SEPARATOR .....	121 - 48
413	CHAFF SPREADER DISC (DUAL MOTOR).....	125 - 10	4D3	CLEANING FAN INTAKE SHIELDS .....	120 - 48
4117	CHAFF SPREADER LINES AND FITTINGS .....	125 - 24	4D5	CLEANING FAN INTAKE SHIELDS .....	120 - 50
2G15	CHAFF SPREADER MOTOR (EATON).....	70 - 8	4D7	CLEANING FAN INTAKE SHIELDS .....	120 - 52
419	CHAFF SPREADER MOUNTING SUPPORT.....	125 - 16	4D1	CLEANING FAN LEAF SCREENS (CORN) .....	120 - 46
4119	CHAFF SPREADER, LINES, HOSES, VALVE AND PUMP.....	125 - 26	4D3	CLEANING FANS AND SHROUDS .....	120 - 48
4123	CHAFF SPREADER, PUMP .....	125 - 30	4D5	CLEANING FANS AND SHROUDS .....	120 - 50
4D17	CHAFFER ELEMENT.....	120 - 62	1J13	CLEANING SHOE LAMP INSTALLATION .....	40 - 98
4D19	CHAFFER EXTENSION ELEMENT .....	120 - 64	4C20	CLEANOUT DOOR .....	120 - 41
4D21	CHAFFER FRAME .....	120 - 66	4C19	CLEANOUT DOOR, CONVEYOR AUGER, HANDLE AND LATCHES .....	120 - 40
4D15	CHAFFER FRAME ARMS, PRECLEANER .....	120 - 60	3H7	CLEANOUT DOORS, FEEDER HOUSE.....	110 - 18
4D11	CHAFFER FRAME, PRE-CLEANER.....	120 - 56	3H11	CLOSURE PLATES, FEEDER HOUSE - CONTOUR MASTER .....	110 - 22
4D9	CHAFFER, PRE-CLEANING .....	120 - 54	4F9	CLUTCH, HEADER ELECTROMAGNETIC.....	121 - 18
4J15	CHAIN TIGHTENER, UPPER TAILINGS DRIVE .....	125 - 46	3H16	CLUTCH, SLIP, FEEDER HOUSE .....	110 - 28
5B7	CHAIN, CONVEYOR, CLEAN GRAIN LOWER ELEVATOR .....	130 - 4	2F1	COLD WEATHER START BUTTON .....	60 - 18
5B9	CHAIN, CONVEYOR, CLEAN GRAIN LOWER ELEVATOR .....	130 - 6	3F18	COLD WEATHER START BUTTON .....	90 - 64
3H22	CHAIN, FEEDER CONVEYOR DRIVE .....	110 - 34	1E21	COLD WEATHER STARTING AID .....	30 - 8
4J9	CHAIN, TAILINGS ELEVATOR CONVEYOR .....	125 - 40	1F16	COMBINE DATA CENTER .....	40 - 6
5D7	CHANNEL, CROSS AUGER .....	130 - 56	3E9	COMBINE DATA CENTER .....	90 - 30
5C11	CHARGE HOUSING, VERTICAL UNLOADING AUGER .....	130 - 34	3B13	COMPARTMENT, ENGINE .....	80 - 10
2J10	CHARGE PRESSURE HOSE .....	70 - 80	3B15	COMPARTMENT, ENGINE .....	80 - 12
4111	CHECK VALVE, ROD AND KNOB, CHAFF SPREADER CONTROL.....	125 - 18	3D16	COMPLETE CAB .....	90 - 12
5C9	CHUTE, GRAIN TANK CLEAN OUT CHUTE.....	130 - 32	3G3	COMPRESSOR AIR CONDITIONER R134A REFRIGERANT .....	90 - 74
1F24	CIGARETTE LIGHTER .....	40 - 14	3G8	COMPRESSOR HARDWARE KIT R134A .....	90 - 80
1F16	CIRCUIT BOARD, COMBINE DATA CENTER.....	40 - 6	3G6	COMPRESSOR, A/C, HOSE.....	90 - 77
3E9	CIRCUIT BOARD, COMBINE DATA CENTER.....	90 - 30	5E4	COMPRESSOR, AIR CONDITIONING BELTS.....	170 - 3
1110	CIRCUIT BREAKER AND RELAY, THROTTLE CONTROL PANEL.....	40 - 70	3G5	COMPRESSOR, AIR CONDITIONING, R134A .....	90 - 76
118	CIRCUIT BREAKER RELAYS.....	40 - 68	114	CONCAVE ADJUSTING MOTOR .....	40 - 64
118	CIRCUIT BREAKERS, ENGINE COMPARTMENT.....	40 - 68	4B23	CONCAVE ASSEMBLY AND BEATER GRATE, .....	120 - 20
1H23	CLAMPS, UNLOADING AUGER LIGHT .....	40 - 58	4C11	CONCAVE INDICATOR, CABLE AND BRACKETS .....	120 - 32
5B7	CLEAN GRAIN CONVEYOR CHAIN.....	130 - 4	4C13	CONCAVE INDICATOR, CORN AND SMALL GRAIN....	120 - 34
5B9	CLEAN GRAIN CONVEYOR CHAIN.....	130 - 6	4B17	CONCAVE, RASP BAR AND GRATE .....	120 - 14
5B24	CLEAN GRAIN ELEVATOR DRIVE IDLER .....	130 - 22	4B21	CONCAVE, RASP BAR AND GRATE .....	120 - 18
5B24	CLEAN GRAIN ELEVATOR DRIVE TIGHTENER .....	130 - 22	4C5	CONCAVE, SPIKE TOOTH .....	120 - 26
5B24	CLEAN GRAIN ELEVATOR DRIVE TIGHTENER AND IDLER.....	130 - 22	4C3	CONCAVE, SPIKE-TOOTH .....	120 - 24
5B22	CLEAN GRAIN ELEVATOR GEARCASE .....	130 - 20	3G3	CONDENSER, AIR CONDITIONER R134A REFRIGERANT .....	90 - 74
5C1	CLEAN GRAIN ELEVATOR SHIELDS, UPPER.....	130 - 24	2J1	CONDENSER, AIR CONDITIONING AND OIL COOLER .....	70 - 70
5B13	CLEAN GRAIN ELEVATOR UPPER SHAFT .....	130 - 10	1C5	CONDITIONER, COOLANT .....	24 - 3
5B13	CLEAN GRAIN ELEVATOR UPPER SHAFT, SPROCKET AND SHEAVE.....	130 - 10	1C12	CONNECTING ROD .....	24 - 10
5B13	CLEAN GRAIN ELEVATOR UPPER SHEAVE.....	130 - 10	1C12	CONNECTING ROD BEARINGS .....	24 - 10
5B13	CLEAN GRAIN ELEVATOR UPPER SPROCKET .....	130 - 10	1114	CONNECTORS, ELECTRICAL, WEATHERPACK .....	40 - 74
5B11	CLEAN GRAIN ELEVATOR, UPPER .....	130 - 8	1122	CONNECTORS, HARNESS, LOWER, FOR ENGINE ....	40 - 82
5B19	CLEAN GRAIN LOADING AUGER .....	130 - 16	1124	CONNECTORS, HARNESS, UPPER FOR ENGINE .....	40 - 84
5B15	CLEAN GRAIN LOADING AUGER HOUSING, UPPER .....	130 - 12	1E10	CONNECTORS, STARTING AID .....	24 - 60
5B17	CLEAN GRAIN LOADING AUGER HOUSING, UPPER .....	130 - 14	1J3	CONNECTORS, SUPPLEMENTARY TERMINALS .....	40 - 88
5B21	CLEAN GRAIN LOADING AUGER, FOLD .....	130 - 18	3F11	CONSOLE GLOVE BOX AND ARM REST, R.H.....	90 - 56
5B5	CLEAN GRAIN LOWER AUGER .....	130 - 2	1F14	CONSOLE PANEL, OVERHEAD.....	40 - 4
5B5	CLEAN GRAIN LOWER AUGER AND HINGED DOOR .....	130 - 2	3H11	CONTOUR MASTER - FEEDER HOUSE FRAME, TILT BEAM & CLOSURE PLATES.....	110 - 22
5B7	CLEAN GRAIN LOWER ELEVATOR .....	130 - 4	3117	CONTOUR MASTER DRIVE SHAFT (FOR 444,494 CORN HEAD AND 914 BPU).....	110 - 54
5B9	CLEAN GRAIN LOWER ELEVATOR .....	130 - 6	3I21	CONTOUR MASTER DRIVESHAFT .....	110 - 58
5B7	CLEAN GRAIN LOWER ELEVATOR AND CONVEYOR CHAIN .....	130 - 4	2H7	CONTOUR MASTER HYDRAULIC HOSES, L.H SIDE (OPTIONAL).....	70 - 26
5B9	CLEAN GRAIN LOWER ELEVATOR AND CONVEYOR CHAIN .....	130 - 6	3H15	CONTOUR MASTER LOCKOUT ADAPTER KIT (BELT PU & 4R CORN HEADS) .....	110 - 26
			2H24	CONTOUR MASTER SOLENOID CONTROL RELIEF VALVE .....	70 - 43
			2I21	CONTOUR MASTER TILT CYLINDER.....	70 - 66

**ALPHABETICAL INDEX - CONTINUED**

GRID		PAGE	GRID		PAGE
2I22	CONTOUR MASTER TILT CYLINDER HOSES AND FITTINGS .....	70 - 67	1E1	CRANKSHAFT DAMPER .....	24 - 50
1H1	CONTOUR MASTER WIRING HARNESS .....	40 - 36	1C8	CRANKSHAFT GEAR .....	24 - 6
1H3	CONTOUR MASTER WIRING HARNESS ADAPTER ....	40 - 38	1E1	CRANKSHAFT PULLEY .....	24 - 50
3H9	CONTOUR MASTER, FEEDER HOUSE SHELL, WEAR PLATES AND SEALS .....	110 - 20	1E6	CRANKSHAFT REAR OIL SEAL .....	24 - 55
3H13	CONTOUR MASTER, LOCKOUT ASSEMBLY (OPTIONAL).....	110 - 24	1C8	CRANKSHAFT THRUST BEARING .....	24 - 6
2B8	CONTROL CABLES, HYDROSTATIC DRIVE .....	50 - 4	5D3	CROSS AUGER BEARING PLATE, L.H. ....	130 - 52
1G1	CONTROL PANEL, ARMREST .....	40 - 16	5D7	CROSS AUGER COVERS AND CHANNEL.....	130 - 56
1F24	CONTROL PANEL, OPERATOR'S ARMREST .....	40 - 14	5D5	CROSS AUGERS, GRAIN TANK .....	130 - 54
1110	CONTROL PANEL, THROTTLE, RELAY AND CIRCUIT BREAKER .....	40 - 70	3B5	CROSS BRACES, SEPARATOR .....	80 - 2
2D7	CONTROL VALVE .....	50 - 56	3F17	CUP HOLDER .....	90 - 62
2I8	CONTROL VALVE MODULE, SIX STACK SOLENOID ASSEMBLY & MOUNTINGS.....	70 - 52	4B19	CURTAIN, BEATER GRATE .....	120 - 16
2D8	CONTROL VALVE SOLENOID (FOUR-WHEEL DR.) ....	50 - 57	4E11	CURTAIN, SEPARATOR .....	120 - 80
3G10	CONTROL VALVE, HEATER .....	90 - 82	4E13	CURTAIN, SEPARATOR (SPIKE-TOOTH CYLINDER) .....	120 - 82
2C13	CONTROL VALVE, HYDRO. DR. DISPLACMENT .....	50 - 38	4J1	CURTAIN, SPREADER .....	125 - 32
2I5	CONTROL VALVE, SOLENOID, FOR AUGER SWING..	70 - 49	5C7	CURTAINS, GRAIN TANK.....	130 - 30
1J5	CONVENIENCE OUTLET .....	40 - 90	2G19	CUTTING PLATFORM , 200 SERIES CONVERSION PARTS .....	70 - 12
1J15	CONVENIENCE OUTLET .....	40 - 100	1C14	CYLINDER BLOCK .....	24 - 12
2G19	CONVERSION PARTS, HUDRAULIC, 200 SERIES CUTTING PLATFORM.....	70 - 12	4B5	CYLINDER COVER, THRESHING .....	120 - 2
5E3	CONVEYOR AUGER BELTS, .....	170 - 2	4B9	CYLINDER DOOR (CORN AND GRAIN) .....	120 - 6
4C19	CONVEYOR AUGER CLEANOUT DOOR, HANDLE AND LATCHES.....	120 - 40	4B11	CYLINDER DOOR, CORN (ARGENTINA ONLY).....	120 - 8
4G11	CONVEYOR AUGERS, STRAW WALKER, SIEVE AND CHAFFER DRIVE .....	121 - 44	4G3	CYLINDER DRIVE ADJUSTING BRACKET, INTERMEDIATE.....	121 - 36
5B7	CONVEYOR CHAIN, CLEAN GRAIN .....	130 - 4	4G1	CYLINDER DRIVE BELT.....	121 - 34
5B9	CONVEYOR CHAIN, CLEAN GRAIN .....	130 - 6	4F17	CYLINDER DRIVE BELT, EXTENDED RANGE.....	121 - 26
1C5	COOLANT CONDITIONER .....	24 - 3	4F17	CYLINDER DRIVE GEAR CASE, DUAL-RANGE.....	121 - 26
1B17	COOLANT HEATER, ENGINE BLOCK.....	20 - 16	4F23	CYLINDER DRIVE INTERMEDIATE SHAFT MOUNTING, DUAL-RANGE .....	121 - 32
1F5	COOLANT RECOVERY TANK .....	30 - 16	4G1	CYLINDER DRIVE INTERMEDIATE SHEAVE, DUAL-RANGE .....	121 - 34
5E4	COOLING FAN BELTS .....	170 - 3	4F21	CYLINDER DRIVE TIGHTENER, DUAL-RANGE .....	121 - 30
4C13	CORN AND SMALL GRAIN CONCAVE INDICATOR ....	120 - 34	4F13	CYLINDER DRIVE, SINGLE RANGE .....	121 - 22
4H20	CORN CURTAIN AND DEFLECTORS .....	125 - 2	4F15	CYLINDER DRIVE, SLOW SPEED.....	121 - 24
4B11	CORN CYLINDER DOOR (ARGENTINA ONLY).....	120 - 8	1D3	CYLINDER HEAD .....	24 - 26
3C11	CORNER SHEET, R H FRONT .....	80 - 32	1D3	CYLINDER HEAD GASKET .....	24 - 26
3C13	CORNER SHEET, REAR, L H .....	80 - 34	1E7	CYLINDER HEAD REMOVAL GASKET SET.....	24 - 56
4G5	COUNTERSHAFT DRIVE, SECONDARY.....	121 - 38	1C12	CYLINDER LINER .....	24 - 10
5D8	COUNTERSHAFT DRIVE, UNLOADING AUGER .....	130 - 58	1C12	CYLINDER LINER O-RING KIT .....	24 - 10
4F5	COUNTERSHAFT GEARCASE, PRIMARY .....	121 - 14	1C5	CYLINDER LINER PACKING LUBRICANT .....	24 - 3
4F7	COUNTERSHAFT GEARCASE, PRIMARY .....	121 - 16	4B13	CYLINDER SHEAR BAR .....	120 - 10
1B15	COUPLING WITH HUB, ENGINE-TRANSMISSION.....	20 - 14	2I3	CYLINDER SPEED AND REEL LIFT, SOLENOID CONTROL VALVE.....	70 - 46
1C10	COVER, ACCESS, INJECTION PUMP GEAR .....	24 - 8	2H21	CYLINDER SPEED HYDRAULIC LINES AND HOSES ..	70 - 40
4C17	COVER, BEATER .....	120 - 38	2E19	CYLINDER, BRAKE SLAVE .....	60 - 12
3G7	COVER, COMPRESSOR A/C R134A.....	90 - 79	2E15	CYLINDER, BRAKE, MASTER .....	60 - 8
3B13	COVER, ENGINE.....	80 - 10	2I17	CYLINDER, DRIVE, GRAIN TANK UNLOADING.....	70 - 62
3B15	COVER, ENGINE.....	80 - 12	2H9	CYLINDER, HEADER LIFT, HYDRAULIC .....	70 - 28
2C7	COVER, HYDROSTATIC DRIVE PUMP.....	50 - 31	2I15	CYLINDER, HYDRAULIC, UNLOADING AUGER SWING, LINES AND HOSES .....	70 - 60
2C4	COVER, HYDROSTATIC PUMP (RING AND PINION) .....	50 - 28	2F13	CYLINDER, STEERING (4-WHEEL DRIVE).....	60 - 30
2C21	COVER, INNER .....	50 - 46	4B15	CYLINDER, THRESHING, RASP BAR .....	120 - 12
1C19	COVER, OIL FILLER OPENING .....	24 - 18	4C1	CYLINDER, THRESHING, SPIKE TOOTH (OPTIONAL).....	120 - 22
2C24	COVER, QUILL AND BEARING (STEERABLE MOTOR).....	50 - 49	2I21	CYLINDER, TILT - CONTOUR MASTER .....	70 - 66
1C6	COVER, ROCKER ARM .....	24 - 4	2I22	CYLINDER, TILT, HOSES AND FITTINGS - CONTOUR MASTER.....	70 - 67
1D15	COVER, THERMOSTAT .....	24 - 38	2I19	CYLINDER, UNLOADING AUGER SWING .....	70 - 64
4B5	COVER, THRESHING CYLINDER .....	120 - 2	2E11	CYLINDERS, MASTER BRAKE AND BRAKE PEDALS	60 - 4
1C10	COVER, TIMING GEAR.....	24 - 8			
5D7	COVERS AND CHANNEL, CROSS AUGER .....	130 - 56		<b>D</b>	
1B19	CRANKCASE, ENGINE, OIL DRAIN.....	20 - 18	1E1	DAMPER,CRANKSHAFT .....	24 - 50
4E9	CRANKS, STRAW WALKER, STRAW SPREADER DRIVE AND SHIELD .....	120 - 78	1F16	DATA CENTER, COMBINE.....	40 - 6
1C8	CRANKSHAFT .....	24 - 6	3E9	DATA CENTER, COMBINE.....	90 - 30



## ALPHABETICAL INDEX - CONTINUED

GRID		PAGE	GRID		PAGE
1B13	ENGINE MOUNTS AND REAR SUPPORT.....	20 - 12	3F18	ETHER START BUTTON .....	90 - 64
3B9	ENGINE ACCESS DOOR, HANDRAILS, AND RADIATOR DOOR.....	80 - 6	1E21	ETHER STARTING AID.....	30 - 8
3B17	ENGINE ACCESS PLATFORM AND STEP .....	80 - 14	3G10	EVAPORATOR/HEATER UNIT .....	90 - 82
1H19	ENGINE AIR FILTER WARNING SWITCH.....	40 - 54	3G3	EVAPORATOR, AIR CONDITIONER R134A REFRIGERANT .....	90 - 74
1I8	ENGINE CIRCUIT BREAKERS .....	40 - 68	1D5	EXHAUST MANIFOLD .....	24 - 28
3B13	ENGINE COMPARTMENT.....	80 - 10	1D5	EXHAUST MANIFOLD GASKET .....	24 - 28
3B15	ENGINE COMPARTMENT.....	80 - 12	1F1	EXHAUST PIPE AND MUFFLER .....	30 - 12
1D17	ENGINE COOLANT ADAPTER.....	24 - 40	1D3	EXHAUST VALVE .....	24 - 26
1B12	ENGINE DRIVE .....	20 - 10	4F17	EXTENDED RANGE CYLINDER DRIVE BELT .....	121 - 26
5E3	ENGINE DRIVE BELTS .....	170 - 2	4G1	EXTENDED RANGE CYLINDER DRIVE BELT .....	121 - 34
5E3	ENGINE DRIVE SHEAVES .....	170 - 2	4D19	EXTENSION ELEMENT, CHAFFER .....	120 - 64
1B8	ENGINE FAN DRIVES.....	20 - 6			
1E5	ENGINE FLYWHEEL .....	24 - 54		F	
1C13	ENGINE FRONT PLATE .....	24 - 11			
4E23	ENGINE GEARCASE (SEPARATOR AND PUMP DRIVE) .....	121 - 8	1E2	FAN BELT IDLER PULLEY .....	24 - 51
2J3	ENGINE GEARCASE OIL FILTER ASSEMBLY .....	70 - 72	1E3	FAN DRIVE BELT TENSIONER .....	24 - 52
2J5	ENGINE GEARCASE PRESSURE REGULATOR .....	70 - 74	3C3	FAN DRIVE SHIELD (L-H SIDE).....	80 - 24
4E21	ENGINE GEARCASE- SEPARATOR DRIVE WET- CLUTCH AND PUMP DRIVE SHAFT .....	121 - 6	4G17	FAN DRIVE SPEED CONTROL LINKAGE.....	121 - 50
4E17	ENGINE GEARCASE- STRAW CHOPPER, UNLOADING DRIVE AND SEPARATOR DRIVE GEAR .....	121 - 2	4G19	FAN DRIVE SPEED CONTROL SHEAVE LINKAGE.....	121 - 52
4F1	ENGINE GEARCASE, SEPARATOR AND PUMP DRIVE .....	121 - 10	1E3	FAN DRIVE SUPPORT .....	24 - 52
4E19	ENGINE GEARCASE, STRAW CHOPPER, UNLOAD- ING DRIVE AND SEPARATOR DRIVE GEAR .....	121 - 4	3F24	FAN, AIR CONDITIONING/HEATER AND PRESSURIZING .....	90 - 70
1E8	ENGINE MAJOR OVERHAUL GASKET SET.....	24 - 58	5E5	FAN, CLEANING, BELTS .....	170 - 4
1C4	ENGINE OIL.....	24 - 2	4G15	FAN, DRIVE, CLEANING, SEPARATOR .....	121 - 48
1C14	ENGINE OIL BY-PASS VALVE.....	24 - 12	3I9	FAN, DUST, LH SIDE FEEDER HOUSE .....	110 - 46
1D17	ENGINE OIL COOLER .....	24 - 40	1B8	FAN, ENGINE.....	20 - 6
1C20	ENGINE OIL DIPSTICK.....	24 - 19	4D3	FANS, CLEANING .....	120 - 48
1C20	ENGINE OIL DIPSTICK TUBE .....	24 - 19	4D5	FANS, CLEANING .....	120 - 50
1C21	ENGINE OIL DRAIN HOSE.....	24 - 20	3I3	FEED PLATE LATCH HANDLE .....	110 - 40
1C21	ENGINE OIL DRAIN VALVE .....	24 - 20	5E3	FEEDER CONVEYOR BELTS.....	170 - 2
1C19	ENGINE OIL FILL CAP .....	24 - 18	3H22	FEEDER CONVEYOR BRACKET.....	110 - 34
1C6	ENGINE OIL FILL PLUG .....	24 - 4	3H22	FEEDER CONVEYOR DRIVE CHAIN .....	110 - 34
1C23	ENGINE OIL FILTER .....	24 - 22	3H24	FEEDER CONVEYOR DRIVE CHAIN, TIGHTENER AND GUIDES.....	110 - 36
1C21	ENGINE OIL PAN .....	24 - 20	3H22	FEEDER CONVEYOR IDLER .....	110 - 34
1C18	ENGINE OIL PUMP .....	24 - 17	1J11	FEEDER HOUSE BACKSHAFT SPEED SENSOR .....	40 - 96
1C18	ENGINE OIL PUMP GEAR .....	24 - 17	5E5	FEEDER HOUSE BELTS .....	170 - 4
1C18	ENGINE OIL PUMP HOUSING.....	24 - 17	3H5	FEEDER HOUSE DRIVE SHIELDS - CONTOUR MASTER .....	110 - 16
1C18	ENGINE OIL PUMP INTAKE.....	24 - 17	3H3	FEEDER HOUSE DRIVE SHIELDS AND SAFETY STOP .....	110 - 14
1C12	ENGINE PISTON .....	24 - 10	4G21	FEEDER HOUSE DRIVE TIGHTENER.....	121 - 54
1H19	ENGINE PLUGGED AIR FILTER WARNING SWITCH ..	40 - 54	3H1	FEEDER HOUSE DRIVE TIGHTENER (FIXED SPEED) .....	110 - 12
3B13	ENGINE RAILS .....	80 - 10	3I11	FEEDER HOUSE DUST FAN BELT, LH .....	110 - 48
3B15	ENGINE RAILS .....	80 - 12	3I9	FEEDER HOUSE DUST FAN, LH SIDE.....	110 - 46
1C16	ENGINE SHORT BLOCK.....	24 - 14	3H20	FEEDER HOUSE FLOOR .....	110 - 32
1H15	ENGINE TACH SENSOR, UPPER PARTS .....	40 - 50	3H7	FEEDER HOUSE FRAME AND FRONT SHAFT .....	110 - 18
1E11	ENGINE TACHOMETER SENSOR.....	24 - 61	3H11	FEEDER HOUSE FRAME, TILT BEAM & CLOSURE PLATES, CONTOUR MASTER.....	110 - 22
1F16	ENGINE TEMPERATURE GAUGE .....	40 - 6	3I19	FEEDER HOUSE FRONT DRIVE SHAFT, SHEAVE AND MOUNTINGS (FIXED SPEED WITH .....	110 - 56
3E9	ENGINE TEMPERATURE GAUGE .....	90 - 30	3I7	FEEDER HOUSE RETURN FLOOR.....	110 - 44
1H15	ENGINE TEMPERATURE SENDER, UPPER PARTS .....	40 - 50	3E13	FEEDER HOUSE REVERSER FOOT CONTROL .....	90 - 34
1H17	ENGINE TEMPERATURE SENDING SWITCH LOWER PARTS.....	40 - 52	3G20	FEEDER HOUSE REVERSER FOOT CONTROL .....	110 - 6
1H17	ENGINE TEMPERATURE SENDING SWITCH 6068, LOWER PARTS.....	40 - 52	3H9	FEEDER HOUSE SHELL - CONTOUR MASTER .....	110 - 20
1H15	ENGINE UPPER HARNESS, UPPER PARTS .....	40 - 50	3H16	FEEDER HOUSE SLIP CLUTCH .....	110 - 28
1H15	ENGINE UPPER HARNESS, UPPER PARTS .....	40 - 50	3I15	FEEDER HOUSE UPPER DRIVE SHAFT, SHEAVE AND MOUNTING (FIXED SPEED WITH .....	110 - 52
1C5	ENGINE VALVE STEM LUBRICANT .....	24 - 3	3H18	FEEDER HOUSE UPPER SHAFT .....	110 - 30
1D1	ENGINE VENTILATING SYSTEM.....	24 - 24	2G17	FEEDER HOUSE VARIABLE DRIVE HYDRAULIC HOSE .....	70 - 10
1B15	ENGINE-TRANSMISSION COUPLING WITH HUB .....	20 - 14	3H9	FEEDER HOUSE WEAR PLATES - CONTOUR MASTER .....	110 - 20
1H17	ENGINE, LOWER, HARNESS, LOWER PARTS .....	40 - 52			
2F1	ETHER START BUTTON .....	60 - 18			

## ALPHABETICAL INDEX - CONTINUED

GRID		PAGE	GRID		PAGE
4B7	FEEDER HOUSE/SEPARATOR SEAL, STONE TRAP AND DOOR.....	120 - 4	2F5	FRONT STEERING HOSES AND LINES.....	60 - 22
315	FEEDER HOUSE, UPPER COUNTERSHAFT VARIABLE DRIVE .....	110 - 42	3G16	FRONT VARIABLE DRIVE SHEAVE AND MOUNTINGS .....	110 - 2
1F20	FIELD LIGHTING, AUXILIARY .....	40 - 10	5F6	FRONT WHEEL DECALS .....	170 - 30
1J9	FIELD LIGHTS .....	40 - 94	1D19	FUEL FILTER.....	24 - 42
1F14	FIELD LIGHTS SWITCH, AUX, OPTIONAL .....	40 - 4	1D19	FUEL FILTER ELEMENT.....	24 - 42
1E23	FILTER, AIR CLEANER.....	30 - 10	1D19	FUEL FILTER FUEL LINES.....	24 - 42
3E7	FILTER, CAB AIR .....	90 - 28	1D19	FUEL FILTER SERVICE KIT.....	24 - 42
1D19	FILTER, FUEL .....	24 - 42	1F16	FUEL GAUGE .....	40 - 6
2G18	FILTER, MAIN HYDRAULIC .....	70 - 11	3E9	FUEL GAUGE .....	90 - 30
3F22	FILTERS, AIR CONDITIONER AND HEATER AND HOUSING.....	90 - 68	1D7	FUEL INJECTION LINES.....	24 - 30
3F22	FILTERS, HEATER AND AIR CONDITIONING AND HOUSING.....	90 - 68	1D6	FUEL INJECTION NOZZLE.....	24 - 29
2B24	FINAL DRIVE (RING AND PINION) .....	50 - 22	1D7	FUEL INJECTION PUMP.....	24 - 30
2C1	FINAL DRIVE AXLE, GEAR AND BEARINGS (RING AND PINION) .....	50 - 24	1D7	FUEL INJECTION PUMP DRIVE GEAR.....	24 - 30
2B25	FINAL DRIVE BEARINGS (RING AND PINION) .....	50 - 23	1D7	FUEL INJECTION PUMP DRIVE GEAR.....	24 - 30
2B25	FINAL DRIVE HOUSING AND BRG. CAP (RING AND PINION) .....	50 - 23	1D7	FUEL INJECTION SYSTEM .....	24 - 30
2C2	FINAL DRIVE PINION, SHAFTS AND BEARINGS (RING AND PINION) .....	50 - 26	1D19	FUEL LINES,FUEL FILTER.....	24 - 42
4C7	FINGER GRATE, SPIKE-TOOTH .....	120 - 28	1E17	FUEL PUMP, WATER SEPARATOR, AND FUEL SENDER .....	30 - 4
4H7	FINS, SUPPORTS AND DECK, STRAW CHOPPER.....	121 - 64	1E17	FUEL SENDER .....	30 - 4
1E15	FITTINGS, FUEL TANK.....	30 - 2	1E15	FUEL TANK, SUPPORTS, AND FITTINGS .....	30 - 2
5D13	FITTINGS, LOWER LUBE HOSE, UNLOADING AUGER.....	130 - 64	1D21	FUEL TRANSFER PUMP .....	24 - 44
1E19	FITTINGS, TANK FUEL LINES .....	30 - 6	1D21	FUEL TRANSFER PUMP PUSH ROD .....	24 - 44
2I22	FITTINGS, TILT CYLINDER - CONTOUR MASTER .....	70 - 67			
5D15	FITTINGS, UPPER LUBE HOSE, UNLOADING AUGER.....	130 - 66	<b>G</b>		
2F18	FIXED REAR AXLE .....	60 - 36	1E7	GASKET SET, CYLINDER HEAD REMOVAL .....	24 - 56
2F23	FIXED REAR AXLE STEERING TIE RODS.....	60 - 41	1E8	GASKET SET,ENGINE MAJOR OVERHAUL.....	24 - 58
2F24	FIXED REAR AXLE, 4-WHEEL DRIVE, STEERING TIE RODS .....	60 - 42	1E7	GASKET SET,IN CHASSIS OVERHAUL .....	24 - 56
3H1	FIXED SPEED FEEDER HOUSE DRIVE TIGHTENER..	110 - 12	1D3	GASKET, CYLINDER HEAD .....	24 - 26
3D6	FLOOR MAT, CAB.....	90 - 2	1C10	GASKET, TIMING GEAR COVER.....	24 - 8
3H20	FLOOR, FEEDER HOUSE .....	110 - 32	1D5	GASKET,EXHAUST MANIFOLD .....	24 - 28
2G13	FLOW CONTROL VALVE, REEL DRIVE .....	70 - 6	1C14	GASKET,PLASTIC .....	24 - 12
4I13	FLOW CONTROL VALVE, REEL DRIVE .....	125 - 20	1C6	GASKET,ROCKER ARM COVER .....	24 - 4
1E6	FLYWHEEL HOUSING .....	24 - 55	1F12	GAUGE BOARD CONN. (WIRING HARNESS).....	40 - 2
1E5	FLYWHEEL RING GEAR.....	24 - 54	1F16	GAUGE, ENGINE TEMPERATURE .....	40 - 6
1E5	FLYWHEEL, ENGINE .....	24 - 54	3E9	GAUGE, ENGINE TEMPERATURE .....	90 - 30
3D8	FOAM, SEALS AND SOUND DEADENING, CAB .....	90 - 4	3G18	GEAR BOX, REVERSER.....	110 - 4
1C7	FOLLOWERS,CAMSHAFT.....	24 - 5	4F17	GEAR CASE, DUAL-RANGE CYLINDER DRIVE.....	121 - 26
3E13	FOOT PEDAL, FEEDER HOUSE REVERSER .....	90 - 34	5C9	GEAR CASE, VERTICAL AUGER LOWER .....	130 - 32
3G20	FOOT PEDAL, FEEDER HOUSE REVERSER .....	110 - 6	1C9	GEAR, CAMSHAFT .....	24 - 7
2D19	FOUR WHEEL DRIVE HYDRAULIC LINES AND HOSES, L.H. ....	50 - 68	1C8	GEAR, CRANKSHAFT .....	24 - 6
2F13	FOUR-WHEEL DRIVE .....	60 - 30	1C18	GEAR, ENGINE OIL PUMP.....	24 - 17
2F14	FOUR-WHEEL DRIVE .....	60 - 31	2C1	GEAR, FINAL DRIVE (RING AND PINION) .....	50 - 24
4D15	FRAME ARMS, PRECLEANER CHAFFER .....	120 - 60	1D7	GEAR, FUEL INJECTION PUMP DRIVE .....	24 - 30
3D18	FRAME, CAB AND SUPPORT .....	90 - 14	4G7	GEARCASE DRIVE, STRAW WALKER .....	121 - 40
4D21	FRAME, CHAFFER .....	120 - 66	5B22	GEARCASE, CLEAN GRAIN ELEVATOR .....	130 - 20
3H7	FRAME, FEEDER HOUSE AND FRONT SHAFT .....	110 - 18	4F3	GEARCASE, DRIVE SHAFT AND PRIMARY COUNTERSHAFT .....	121 - 12
3H11	FRAME, FEEDER HOUSE, CONTOUR MASTER .....	110 - 22	4E21	GEARCASE, ENGINE .....	121 - 6
3B5	FRAME, SEPARATOR.....	80 - 2	4F1	GEARCASE, ENGINE .....	121 - 10
4E1	FRAME, SIEVE .....	120 - 70	4E23	GEARCASE, ENGINE (SEPARATOR AND PUMP DRIVE) .....	121 - 8
1F19	FRONT AND REAR TURN AND TAIL LIGHTS .....	40 - 9	2J3	GEARCASE, ENGINE, OIL FILTER ASSEMBLY.....	70 - 72
2B11	FRONT AXLE .....	50 - 7	5C19	GEARCASE, HORIZONTAL UNLOADING AUGER DRIVE .....	130 - 42
3C11	FRONT CORNER SHEET, R H .....	80 - 32	4F5	GEARCASE, PRIMARY COUNTERSHAFT .....	121 - 14
1C13	FRONT PLATE, ENGINE.....	24 - 11	4F7	GEARCASE, PRIMARY COUNTERSHAFT .....	121 - 16
3G22	FRONT SHAFT WITH REVERSER (VARIABLE).....	110 - 8	4G9	GEARCASE, STRAW WALKER DRIVE .....	121 - 42
3C19	FRONT SHIELD ASSEMBLY, LEFT SIDE .....	80 - 40	2B22	GEARS, DIFFERENTIAL .....	50 - 20
3D1	FRONT SHIELD ASSEMBLY, RIGHT SIDE .....	80 - 46	2B18	GEARS, TRANSMISSION .....	50 - 16
			2B20	GEARS, TRANSMISSION PINION .....	50 - 18
			2B15	GEARSHIFT LEVER AND LINKAGE .....	50 - 12
			3E11	GEARSHIFT LEVER AND LINKAGE .....	90 - 32
			3D16	GLASS, CAB AND DOOR.....	90 - 12



## ALPHABETICAL INDEX - CONTINUED

<i>GRID</i>		<i>PAGE</i>	<i>GRID</i>		<i>PAGE</i>
3F11	GLOVE BOX AND ARM REST, R.H. ....	90 - 56	5D20	HEADER HEIGHT CONTROL, ELECTRIC HARNESS, DIAL-A-MATIC .....	160 - 4
4D13	GRAIN LEAK KIT .....	120 - 58	2H9	HEADER LIFT CYLINDER, HYDRAULIC .....	70 - 28
5C7	GRAIN TANK AND CURTAINS .....	130 - 30	2H5	HEADER LIFT LINES AND HOSES .....	70 - 24
5C5	GRAIN TANK BASE .....	130 - 28	2I1	HEADER LIFT MODULE, SOLENOID CONTROL VALVE .....	70 - 44
5D5	GRAIN TANK CROSS AUGERS .....	130 - 54	2B6	HEADER LIFT/LOWER SWITCH .....	50 - 2
1H23	GRAIN TANK DUAL LEVEL MONITOR HARNESS .....	40 - 58	1A8	HEADERS .....	10 - 7
1H21	GRAIN TANK LEVEL MONITOR .....	40 - 56	1G7	HEATER AND AIR CONDITIONER SWITCH .....	40 - 22
1H21	GRAIN TANK LIGHT .....	40 - 56	3E8	HEATER AND AIR CONDITIONING DUCTS .....	90 - 29
1H20	GRAIN TANK LIGHTS .....	40 - 55	3F22	HEATER AND AIR CONDITIONING HOUSING AND FILTERS .....	90 - 68
5C3	GRAIN TANK TOP .....	130 - 26	3G10	HEATER SYSTEM .....	90 - 82
1H21	GRAIN TANK UNLOADING AUGER LIMIT SWITCH ....	40 - 56	1G5	HEATER WIRING HARNESS .....	40 - 20
2I17	GRAIN TANK UNLOADING DRIVE CYLINDER .....	70 - 62	3F24	HEATER/AIR CONDITIONING AND PRESSURIZING FAN .....	90 - 70
2I17	GRAIN TANK UNLOADING DRIVE CYLINDER MOUNTING .....	70 - 62	1B17	HEATER, COOLANT, ENGINE BLOCK .....	20 - 16
5C11	GRAIN TANK VERTICAL UNLOADING AUGER .....	130 - 34	3E23	HEIGHT ADJUSTER, CAB SEAT .....	90 - 44
5C11	GRAIN TANK VERTICAL UNLOADING AUGER HOUSING .....	130 - 34	3G3	HIGH PRESSURE SWITCH, AIR CONDITIONER R134A REFRIGERANT .....	90 - 74
1H21	GRAIN TANK WIRING HARNESS, LIGHT, LIMIT SWITCH AND LEVEL MONITOR .....	40 - 56	5B5	HINGED DOOR, LOWER AUGER, CLEAN GRAIN .....	130 - 2
4B17	GRATE AND RASP BAR CONCAVE .....	120 - 14	1I6	HOLDDOWN, BATTERY .....	40 - 66
4B21	GRATE AND RASP BAR CONCAVE .....	120 - 18	3F17	HOLDER, CUP .....	90 - 62
4B19	GRATE, BEATER CURTAIN .....	120 - 16	3B23	HOOD, REAR .....	80 - 20
4C7	GRATE, FINGER, SPIKE-TOOTH .....	120 - 28	5C24	HORIZONTAL UNLOADING AUGER (14- AND 17-FT.) .....	130 - 48
4H24	GUARD AND STRAW SPREADER MOUNTING .....	125 - 6	5D1	HORIZONTAL UNLOADING AUGER (17-FT.) .....	130 - 50
5D10	GUIDE, DRIVE BELT, UNLOADING AUGER .....	130 - 60	5C17	HORIZONTAL UNLOADING AUGER HUB SUPPORT .....	130 - 40
3H24	GUIDES, TIGHTENER AND FEEDER CONVEYOR DRIVE CHAIN .....	110 - 36	5C19	HORIZONTAL UNLOADING AUGER DRIVE GEARCASE .....	130 - 42
<b>H</b>					
3E5	HAND RAIL, R.H. ....	90 - 26	5C20	HORIZONTAL UNLOADING AUGER HOUSING (14- AND 17-FT.) .....	130 - 44
3D14	HANDLE, CAB DOOR .....	90 - 10	5C22	HORIZONTAL UNLOADING AUGER HOUSING (14- AND 17-FT.) .....	130 - 46
4C19	HANDLE, LATCHES AND CONVEYOR AUGER CLEANOUT DOOR .....	120 - 40	5C13	HORIZONTAL UNLOADING AUGER SWIVEL .....	130 - 36
4I5	HANDLES AND SHIELDS, CHAFF SPREADER (DUAL MOTOR) .....	125 - 12	2F1	HORN BUTTON .....	60 - 18
3D22	HANDRAIL, OPERATOR'S PIVOTING PLATFORM .....	90 - 18	3F18	HORN BUTTON .....	90 - 64
3B9	HANDRAILS, REAR LADDER LANDING .....	80 - 6	5D13	HOSE FITTINGS, LOWER LUBE, UNLOADING AUGER .....	130 - 64
3G12	HARDWARE KIT, CAB .....	90 - 84	5D15	HOSE FITTINGS, UPPER LUBE, UNLOADING AUGER .....	130 - 66
3G8	HARDWARE KIT, COMPRESSOR R134A .....	90 - 80	3G6	HOSE, A/C COMPRESSOR .....	90 - 77
1I22	HARNESS CONNECTORS, LOWER, FOR ENGINE .....	40 - 82	2J10	HOSE, CHARGE PRESSURE .....	70 - 80
1I24	HARNESS CONNECTORS, UPPER, FOR ENGINE .....	40 - 84	2G17	HOSE, HYDRAULIC, VARIABLE DRIVE, FEEDER HOUSE .....	70 - 10
1H5	HARNESS FOR REAR LIGHTS AND SHIELDS .....	40 - 40	1D1	HOSE, VENTILATION SYSTEM .....	24 - 24
1H1	HARNESS WIRING, MAIN, L.H. CENTER .....	40 - 36	2H13	HOSES AND LINES, ACCUMULATOR (ONE GALLON) .....	70 - 32
1H17	HARNESS, LOWER, ENGINE, LOWER PARTS .....	40 - 52	4I21	HOSES AND LINES, CHAFF SPREADER (DUAL MOTOR) .....	125 - 28
1H17	HARNESS, LOWER, ENGINE, 6068 LOWER PARTS .....	40 - 52	2D19	HOSES AND LINES, FOUR WHEEL DRIVE HYDRAU LIC, L.H. ....	50 - 68
1H15	HARNESS, UPPER ENGINE, UPPER PARTS .....	40 - 50	2H5	HOSES AND LINES, HEADER LIFT .....	70 - 24
1H15	HARNESS, UPPER, ENGINE, UPPER PARTS .....	40 - 50	2H21	HOSES AND LINES, HYDRAULIC, CYLINDER SPEED .....	70 - 40
1G5	HARNESS, WIRING, A/C, HEATER AND AIRSEAT .....	40 - 20	2D17	HOSES AND LINES, HYDRO. OIL COOLER .....	50 - 66
1H3	HARNESS, WIRING, MAIN, L.H. CENTER .....	40 - 38	2D9	HOSES AND LINES, OIL, HYDROSTATIC DRIVE, LOWER (2&4 WHEEL DRIVE) .....	50 - 58
1H7	HARNESS, WIRING, R.H. MAIN .....	40 - 42	2G20	HOSES AND LINES, REEL DRIVE, HYD., FRONT .....	70 - 14
1G3	HARNESS, WIRING, STEERING COLUMN .....	40 - 18	2G11	HOSES AND LINES, REEL DRIVE, HYDRAULIC, L.H. SIDE .....	70 - 4
1F16	HARVESTRAK .....	40 - 6	2G24	HOSES AND LINES, REEL LIFT .....	70 - 18
3E9	HARVESTRAK .....	90 - 30	2F5	HOSES AND LINES, STEERING, FRONT .....	60 - 22
1H13	HARVESTRAK MONITOR WIRING HARNESS .....	40 - 48	2F11	HOSES AND LINES, STEERING, REAR .....	60 - 28
1D3	HEAD, CYLINDER .....	24 - 26			
5E5	HEADER BELTS .....	170 - 4			
4F9	HEADER ELECTROMAGNETIC CLUTCH .....	121 - 18			
2H10	HEADER HEIGHT CONTROL VALVE .....	70 - 29			
5D19	HEADER HEIGHT CONTROL VALVE .....	160 - 3			
5D18	HEADER HEIGHT CONTROL, DIAL-A-MATIC HYDRAULIC LINE AND VALVE BLOCK .....	160 - 2			



## ALPHABETICAL INDEX - CONTINUED

GRID		PAGE	GRID		PAGE
1F16	INSTRUMENT PANEL, CAB POST .....	40 - 6	3B21	LATCH ARM, REAR LADDER LANDING .....	80 - 18
3E9	INSTRUMENT PANEL, CAB POST .....	90 - 30	3I3	LATCH HANDLE, FEED PLATE .....	110 - 40
3I13	INTAKE SHIELD.....	110 - 50	3D14	LATCH, CAB DOOR .....	90 - 10
4D3	INTAKE SHIELDS, CLEANING FAN.....	120 - 48	5C9	LATCH, GRAIN TANK CLEAN OUT CHUTE .....	130 - 32
4D5	INTAKE SHIELDS, CLEANING FAN.....	120 - 50	4C19	LATCHES, HANDLE AND CONVEYOR AUGER CLEANOUT DOOR .....	120 - 40
1E23	INTAKE TUBES AND AIR CLEANER.....	30 - 10	4D1	LEAF SCREENS, CLEANING FAN (CORN) .....	120 - 46
1D3	INTAKE VALVE .....	24 - 26	4D13	LEAK KIT, GRAIN .....	120 - 58
1C18	INTAKE, ENGINE OIL PUMP .....	24 - 17	3C19	LEFT SIDE FRONT SHIELD ASSEMBLY .....	80 - 40
1B10	INTERCOOLER .....	20 - 8	3C23	LEFT SIDE SHIELD ASSEMBLY .....	80 - 44
4G3	INTERMEDIATE DRIVE ADJUSTING BRACKET.....	121 - 36	3F15	LEFT-HAND ARMREST.....	90 - 60
4F23	INTERMEDIATE SHAFT MOUNTING, CYLINDER DRIVE, DUAL-RANGE.....	121 - 32	5F4	LEFT-HAND DECALS .....	170 - 28
4G1	INTERMEDIATE SHEAVE, CYLINDER DRIVE, DUAL-RANGE .....	121 - 34	1H23	LEVEL MONITOR WIRING HARNESS, DUAL.....	40 - 58
			1H23	LEVEL MONITOR, DUAL .....	40 - 58
			1H21	LEVEL MONITOR, GRAIN TANK .....	40 - 56
			2B6	LEVER ASSEMBLY, GEARSHIFT .....	50 - 2
			3E21	LEVER, ADJUSTER, OPERATOR'S SEAT .....	90 - 42
			2B15	LEVER, GEARSHIFT .....	50 - 12
			3E11	LEVER, GEARSHIFT .....	90 - 32
			2H9	LIFT CYLINDER, HEADER, HYDRAULIC .....	70 - 28
			1F12	LIGHT SWITCH (WIRING HARNESS).....	40 - 2
			1F11	LIGHT, CAB DOME .....	40 - 1
			1H21	LIGHT, GRAIN TANK.....	40 - 56
			1H23	LIGHT, UNLOADING AUGER .....	40 - 58
			1F24	LIGHTER, CIGARETTE .....	40 - 14
			1F20	LIGHTING, AUXILIARY, FIELD .....	40 - 10
			1F18	LIGHTS, CAB ROOF .....	40 - 8
			1J9	LIGHTS, FIELD .....	40 - 94
			1F19	LIGHTS, FRONT AND REAR TAIL.....	40 - 9
			1F19	LIGHTS, FRONT AND REAR TURN .....	40 - 9
			1H20	LIGHTS, ROW .....	40 - 55
			1J7	LIGHTS, TRANSPORT WARNING .....	40 - 92
			1H21	LIMIT SWITCH, GRAIN TANK UNLOADING AUGER ....	40 - 56
			2E5	LINE, RESERVOIR RETURN .....	50 - 78
			1C12	LINER, CYLINDER.....	24 - 10
			4I17	LINES AND FITTING, CHAFF SPREADER .....	125 - 24
			4I21	LINES AND HOSES, CHAFF SPREADER (DUAL MOTOR).....	125 - 28
			2D19	LINES AND HOSES, FOUR WHEEL DRIVE HYDRAU LIC, L.H.....	50 - 68
			2H5	LINES AND HOSES, HEADER LIFT .....	70 - 24
			2H21	LINES AND HOSES, HYDRAULIC, CYLINDER SPEED .....	70 - 40
			2D17	LINES AND HOSES, HYDRO. OIL COOLER .....	50 - 66
			2D9	LINES AND HOSES, OIL, HYDROSTATIC DRIVE, LOWER (2&4 WHEEL DRIVE) .....	50 - 58
			2G20	LINES AND HOSES, REEL DRIVE, HYD., FRONT.....	70 - 14
			2G11	LINES AND HOSES, REEL DRIVE, HYDRAULIC, L.H. SIDE .....	70 - 4
			2G24	LINES AND HOSES, REEL LIFT .....	70 - 18
			2F5	LINES AND HOSES, STEERING, FRONT.....	60 - 22
			2F11	LINES AND HOSES, STEERING, REAR .....	60 - 28
			2I15	LINES AND HOSES, UNLOADING AUGER SWING HYDRAULIC CYLINDER.....	70 - 60
			2I23	LINES AND HOSES, WET CLUTCH OIL COOLER, HYDRAULIC.....	70 - 68
			2D23	LINES AND HOSES, 4-WHEEL DRIVE .....	50 - 72
			2E13	LINES, BRAKE, RESERVOIR, MASTER CYLINDER ....	60 - 6
			1D7	LINES, FUEL INJECTION .....	24 - 30
			2F7	LINES, HOSES, STEERING, L.H. SIDE.....	60 - 24
			4I19	LINES, HOSES, VALVE AND PUMP, CHAFF SPREADER .....	125 - 26
			2G22	LINES, HYDRAULIC, REEL PUMP.....	70 - 16
			2D11	LINES, OIL, HYDROSTATIC DRIVE, LOWER (FOUR WHEEL DRIVE) .....	50 - 60
K					
4H17	KEY STOCK, METRIC KIT .....	121 - 74			
4I16	KIT, ADJUSTING SCREW, REEL DRIVE FLOW CONTROL VALVE.....	125 - 23			
3F3	KIT, AIR SUSPENSION SEAT .....	90 - 48			
3F5	KIT, AIR SUSPENSION SEAT .....	90 - 50			
3F7	KIT, AIR SUSPENSION SEAT .....	90 - 52			
3F9	KIT, AIR SUSPENSION SEAT .....	90 - 54			
1C12	KIT, CYLINDER LINER O-RING .....	24 - 10			
1I16	KIT, ELECTRICAL CONNECTOR SERVICE .....	40 - 76			
1I18	KIT, ELECTRICAL CONNECTOR SERVICE .....	40 - 78			
4D13	KIT, GRAIN LEAK .....	120 - 58			
2C6	KIT, HYDROSTATIC DRIVE MOTOR (RING AND PINION) .....	50 - 30			
3H15	KIT, LOCKOUT ADAPTER - CONTOUR MASTER (BELT PU & 4R CORN HEADS) .....	110 - 26			
4H17	KIT, METRIC KEY STOCK .....	121 - 74			
4I15	KIT, REEL DRIVE FLOW CONTROL VALVE .....	125 - 22			
2F14	KIT, STEERING CYLINDER .....	60 - 31			
4E7	KIT, STRAW WALKER BEARING.....	120 - 76			
1I20	KIT, TERMINAL AND WIRING .....	40 - 80			
1D19	KIT,FUEL FILTER SERVICE .....	24 - 42			
1D10	KIT,TURBOCHARGER HARDWARE .....	24 - 33			
1D13	KIT,WATER PUMP REPAIR .....	24 - 36			
4H13	KNIFEBANK AND STRAW CHOPPER HOUSING ( -655100) .....	121 - 70			
L					
1G23	L H MAIN WIRING HARNESS, L H FRONT .....	40 - 35A			
1H5	L.H. AND R.H. MAIN WIRING HARNESS, REAR .....	40 - 40			
1F12	L.H. AND R.H. RADIO SPEAKERS (WIRING HARNESS).....	40 - 2			
1G21	L.H. MAIN WIRING HARNESS, FRONT.....	40 - 34			
1H1	L.H. MAIN WIRING HARNESS, L.H. CENTER .....	40 - 36			
3C9	L.H. SERVICE ACCESS SHIELD .....	80 - 30			
2F7	L.H. SIDE HOSES AND LINES, STEERING .....	60 - 24			
3D24	LADDER AND LATCH, OPERATOR'S PLATFORM .....	90 - 20			
3B19	LADDER, REAR.....	80 - 16			
1J18	LAMP ASSEMBLY, REAR - L.H. SIDE.....	40 - 103			
1J17	LAMP ASSEMBLY, REAR - R.H. SIDE .....	40 - 102			
1J13	LAMP, INSTALLATION .....	40 - 98			
3E3	LANDING AND MIRROR, CAB, L.H. ....	90 - 24			
3D22	LANDING, OPERATOR'S PIVOTING PLATFORM.....	90 - 18			
3E5	LANDING, R.H. ....	90 - 26			
3B19	LANDING, REAR LADDER .....	80 - 16			
3D24	LATCH AND LADDER, OPERATOR'S PLATFORM .....	90 - 20			

**ALPHABETICAL INDEX - CONTINUED**

<i>GRID</i>		<i>PAGE</i>	<i>GRID</i>		<i>PAGE</i>
2D13	LINES, OIL, HYDROSTATIC DRIVE, LOWER (TWO WHEEL DRIVE) .....	50 - 62	1D5	MANIFOLD, EXHAUST .....	24 - 28
2H19	LINES, PRESSURE, HYDRAULIC .....	70 - 38	1D9	MANIFOLD, AIR INTAKE .....	24 - 32
2H15	LINES, RETURN, HYDRAULIC .....	70 - 34	2E15	MASTER BRAKE CYLINDER .....	60 - 8
2F9	LINES, STEERING R.H. SIDE .....	60 - 26	2E13	MASTER CYLINDER, RESERVOIR, BRAKE LINES .....	60 - 6
1E19	LINES, TANK FUEL .....	30 - 6	4H17	METRIC KEY STOCK KIT .....	121 - 74
1D11	LINES, TURBOCHARGER OIL .....	24 - 34	3E3	MIRROR AND LANDING, CAB, L.H. ....	90 - 24
2H17	LINES, UPPER RETURN, HYDRAULIC .....	70 - 36	3E5	MIRROR, R.H. ....	90 - 26
2B15	LINKAGE, GEARSHIFT .....	50 - 12	1H1	MODULE, LOGIC .....	40 - 36
3E11	LINKAGE, GEARSHIFT .....	90 - 32	1H3	MODULE, LOGIC .....	40 - 38
4G19	LINKAGE, SHEAVE, FAN DRIVE SPEED CONTROL .....	121 - 52	2I8	MODULE, SIX STACK SOLENOID CONTROL VALVE ASSEMBLY & MOUNTINGS .....	70 - 52
4G17	LINKAGE, SPEED CONTROL, FAN DRIVE .....	121 - 50	1H13	MONITOR WIRING HARNESS, HARVESTRAK .....	40 - 48
5B19	LOADING AUGER, CLEAN GRAIN .....	130 - 16	1H21	MONITOR, LEVEL, GRAIN TANK .....	40 - 56
5B21	LOADING AUGER, CLEAN GRAIN, FOLD .....	130 - 18	1D22	MOTOR 12 VOLT, STARTER .....	24 - 46
3H15	LOCKOUT ADAPTER KIT - CONTOUR MASTER (BELT PU & 4R CORN HEADS) .....	110 - 26	1I4	MOTOR, ADJUSTING, CONCAVE .....	40 - 64
4F19	LOCKOUT ARM, DUAL-RANGE .....	121 - 28	1H25	MOTOR, ADJUSTING, SEPARATOR FAN DRIVE .....	40 - 60
3H13	LOCKOUT ASSEMBLY - CONTOUR MASTER (OPTIONAL) .....	110 - 24	2C18	MOTOR, CAM LOBE (STEERABLE MOTOR) .....	50 - 43
1H1	LOGIC MODULE .....	40 - 36	2G15	MOTOR, CHAFF SPREADER (EATON) .....	70 - 8
1H3	LOGIC MODULE .....	40 - 38	2E1	MOTOR, HYDROSTATIC DRIVE .....	50 - 74
1G8	LOW SHAFT SPEED SENSORS AND BRACKETS .....	40 - 23	2C15	MOTOR, HYDROSTATIC DRIVE, FIXED (RING AND PINION) .....	50 - 40
5B5	LOWER AUGER, CLEAN GRAIN .....	130 - 2	1J1	MOTOR, REEL SPEED, AND BRACKET .....	40 - 86
5B7	LOWER ELEVATOR, CLEAN GRAIN .....	130 - 4	4I9	MOUNTING SUPPORT, CHAFF SPREADER .....	125 - 16
5B9	LOWER ELEVATOR, CLEAN GRAIN .....	130 - 6	2I17	MOUNTING, GRAIN TANK UNLOADING DRIVE CYLINDER .....	70 - 62
1H17	LOWER HARNESS FOR ENGINE LOWER PARTS .....	40 - 52	2H23	MOUNTING, HYDRAULIC/HYDRO OIL RESERVOIR .....	70 - 42
1H17	LOWER HARNESS FOR 6068 ENGINE LOWER PARTS .....	40 - 52	2H13	MOUNTING, ONE GALLON ACCUMULATOR .....	70 - 32
2D11	LOWER HYDROSTATIC DRIVE OIL LINES AND HOSES (FOUR WHEEL DRIVE) .....	50 - 60	4H24	MOUNTING, STRAW SPREADER AND GUARD .....	125 - 6
2D13	LOWER HYDROSTATIC DRIVE OIL LINES AND HOSES (TWO WHEEL DRIVE) .....	50 - 62	2I19	MOUNTING, UNLOADING AUGER SWING CYLINDER .....	70 - 64
2D9	LOWER HYDROSTATIC DRIVE OIL LINES AND HOSES (2&4 WHEEL DRIVE) .....	50 - 58	2I8	MOUNTINGS, SIX STACK SOLENOID CONTROL VALVE .....	70 - 52
4J3	LOWER TAILINGS AUGER .....	125 - 34	2I6	MOUNTINGS, SOLENOID CONTROL VALVE MODULE ASSEMBLY .....	70 - 50
5E6	LOWER TAILINGS AUGER BELT .....	170 - 5	1B13	MOUNTS, ENGINE, AND REAR SUPPORT .....	20 - 12
4J10	LOWER TAILINGS AUGER CHAIN TIGHTENER .....	125 - 41	3C3	MUD AND FAN DRIVE SHIELDS (L-H SIDE) .....	80 - 24
4J11	LOWER TAILINGS AUGER DRIVE TIGHTENER .....	125 - 42	3C3	MUD SHIELDS (L-H SIDE) .....	80 - 24
4J3	LOWER TAILINGS AUGER SHAFT .....	125 - 34	2D22	MUD SHIELDS (POWERED REAR WHEELS) .....	50 - 71
4J3	LOWER TAILINGS AUGER SHAFT TIGHTENER .....	125 - 34	3C17	MUD SHIELDS (R.H. SIDE) .....	80 - 38
4J5	LOWER TAILINGS AUGER TROUGH .....	125 - 36	3C1	MUD SHIELDS, AUGER DRIVE (R-H SIDE) .....	80 - 22
5D13	LUBE HOSE FITTINGS, LOWER, UNLOADING AUGER .....	130 - 64	1F1	MUFFLER AND EXHAUST PIPE .....	30 - 12
5D15	LUBE HOSE FITTINGS, UPPER, UNLOADING AUGER .....	130 - 66	N		
4J24	LUBE HOSES L. H. ....	125 - 56	3F11	NEUTRAL START SWITCH .....	90 - 56
4J22	LUBE HOSES R. H. ....	125 - 54	1D6	NOZZLE, FUEL INJECTION .....	24 - 29
2B18	LUBE PUMP, TRANSMISSION .....	50 - 16	O		
1C5	LUBRICANT, CYLINDER LINER PACKING .....	24 - 3	3G6	O-RINGS, A/C COMPRESSOR HOSE .....	90 - 77
1C5	LUBRICANT, ENGINE VALVE STEM .....	24 - 3	2J1	OIL COOLER AND AIR CONDITIONING CONDENSER SER .....	70 - 70
M			2D17	OIL COOLER LINES AND HOSES, HYDRO. ....	50 - 66
1C14	MAIN BEARING CAP .....	24 - 12	1D17	OIL COOLER, ENGINE .....	24 - 40
1C8	MAIN BEARINGS .....	24 - 6	1B19	OIL DRAIN, ENGINE CRANKCASE .....	20 - 18
3B5	MAIN FRAME, SEPARATOR .....	80 - 2	1C19	OIL FILL INLET .....	24 - 18
2G18	MAIN HYDRAULIC FILTER .....	70 - 11	1C19	OIL FILLER OPENING COVER .....	24 - 18
2E3	MAIN HYDRAULIC PUMP - HYDROSTATIC DRIVE PUMP CONNECTING HARDWARE .....	50 - 76	1C23	OIL FILTER, ENGINE .....	24 - 22
5D19	MAIN VALVE BLOCK SOLENOID DIAL-A-MATIC HEADER HEIGHT CONTROL .....	160 - 3	2J3	OIL FILTER, ENGINE GEARCASE, ASSEMBLY .....	70 - 72
1G17	MAIN WIRING HARNESS, L.H. FRONT (S.N. -680100) .....	40 - 32	2D11	OIL HOSES, HYDROSTATIC DRIVE, LOWER (FOUR WHEEL DRIVE) .....	50 - 60
1H3	MAIN WIRING HARNESS, L.H. CENTER .....	40 - 38	2D13	OIL HOSES, HYDROSTATIC DRIVE, LOWER (TWO WHEEL DRIVE) .....	50 - 62
2C23	MANIFOLD AND PACKINGS .....	50 - 48	2D9	OIL LINES AND HOSES, HYDROSTATIC DRIVE, LOWER (2&4 WHEEL DRIVE) .....	50 - 58
3G5	MANIFOLD, A/C COMPRESSOR .....	90 - 76			