

**TECHNICAL MANUAL**  
**UNIT, DIRECT SUPPORT**  
**AND GENERAL SUPPORT**  
**MAINTENANCE PARTS LIST**  
  
**FOR**

**HYDRAULIC EXCAVATOR**  
**JOHN DEERE**  
**MODEL 230LCR**  
**NSN 3805-01-463-0804**

**AND**

**MODEL 230LCRD WITH ROCK DRILL**  
**NSN 3805-01-463-0806**

**DISTRIBUTION STATEMENT A** - Approved for public release; distribution is unlimited.

Reproduced by permission of Deere & Company, Moline, IL © 2000.  
All rights reserved.

---

**HEADQUARTERS, DEPARTMENT OF THE ARMY**  
**15 FEBRUARY 2000**

# TM 5-3805-280-24P

INSERT LATEST UPDATED PAGES. DESTROY SUPERSEDED DATA

## LIST OF EFFECTED PAGES

Note: The portion of text or illustration effected by the updates is indicated by a vertical line in the outer margins of the page. Updates to wiring diagrams are indicated by shaded areas.

Dates of issue for original and updated pages are:

Original .. 0 .. 15 February 2000

**TOTAL NUMBER OF PAGES IS 1104 CONSISTING OF THE FOLLOWING:**

Page No.	*Revision No.	Page No.	*Revision No.	Page No.	*Revision No.
Title.....	0	0419-2, 0419-3 .....	0	1910-2 – 1910-33.....	0
A .....	0	0420-2 – 0420-5 .....	0	1913A-2, 1913A-3 .....	0
B blank.....	0	0421-2.....	0	1913B-2, 1913B-3 .....	0
i – iii .....	0	0422-1 – 0422-3 .....	0	1919-2, 1919-3.....	0
iv blank .....	0	0423-2, 0423-3 .....	0	2002-2, 2002-3.....	0
I-1 – I-5 .....	0	0429-2 – 0429-8 .....	0	2003-2, 2003-3.....	0
I-6 blank.....	0	0433-1, 0433-2 .....	0	2004A-2, 2004A-3 .....	0
I-7 – I-21 .....	0	0452-1 – 0452-3 .....	0	2005A-2, 2005A-3 .....	0
I-22 blank.....	0	0505-2 – 0505-13 .....	0	2013B-2, 2013B-3 .....	0
0130-1 – 0130-17 .....	0	0510-2 – 0510-11 .....	0	2160-2 – 2160-19.....	0
0260-2 – 0260-23 .....	0	0515-2 – 0515-5 .....	0	2162A-2 – 2162A-4....	0
0400-2 – 0400-4 .....	0	0520-2 – 0520-5 .....	0	2163A-1, 2163A-2 .....	0
0401-1 .....	0	0530-2, 0530-3 .....	0	2163B-1.....	0
0402-2 – 0402-6 .....	0	0560-2 – 0560-7 .....	0	2200-2 – 2200-367.....	0
0403-1 .....	0	1320-2, 1320-3 .....	0	2201A-2 – 2201A-20..	0
0404-2 – 0404-6 .....	0	1369-2 – 1369-5 .....	0	3301A-1, 3301A-2 .....	0
0407-1 – 0407-6 .....	0	1671A-2 – 1671A-4....	0	3302-1 – 3302-27 .....	0
0408-1 .....	0	1672-1.....	0	3315-2 – 3315-19.....	0
0409-2, 0409-3 .....	0	1673A-2 – 1673A-7...0	0	3340-2, 3340-3.....	0
0410-2 .....	0	1674-2 – 1674-43 .....	0	3360-2 – 3360-96.....	0
0413-1 – 0413-8 .....	0	1740-2 – 1740-11 .....	0	3362A-1 – 3362A-9....	0
0414-1 .....	0	1801A-2, 1801A-3.....	0	4360-2 – 4360-6.....	0
0416-2, 0416-3 .....	0	1810-2 – 1810-43 .....	0	4400-1 – 4400-144....	0
0417-2, 0417-3 .....	0	1821-2 – 1821-9 .....	0	II-1 – II-20.....	0
0418-2, 0418-3 .....	0	1830-2 – 1830-39 .....	0		

\*Zero in this column indicates an original page.

A

**BLANK**

UNIT, DIRECT SUPPORT  
AND GENERAL SUPPORT MAINTENANCE PARTS LIST

HYDRAULIC EXCAVATOR  
JOHN DEERE  
MODEL 230LCR  
NSN 3805-01-463-0804

AND  
MODEL 230LCRD WITH ROCK DRILL  
NSN 3805-01-463-0806

REPORTING ERRORS AND RECOMMENDING IMPROVEMENTS

You can help improve this publication. If you find any mistakes or if you know of a way to improve the procedures, please let us know. Submit your DA Form 2028-2 (Recommended Changes to Equipment Technical Publications), through the Internet, on the Army Electronic Product Support (AEPS) website. The Internet address is <http://aeprs.ria.army.mil>. If you need a password, scroll down and click on "ACCESS REQUEST FORM". The DA Form 2028 is located in the ONLINE FORMS PROCESSING section of the AEPS. Fill out the form and click on SUBMIT. Using this form on the AEPS will enable us to respond quicker to your comments and better manage the DA Form 2028 program. You may also mail, fax or email your letter, DA Form 2028, or DA Form 2028-2 direct to: Commander, U.S. Army Tank-automotive and Armaments Command, ATTN: AMSTA-LC-CI, Rock Island, IL 61299-7630. The email address is [amsta-lc-ci@ria.army.mil](mailto:amsta-lc-ci@ria.army.mil). The fax number is DSN 793-0726 or Commercial (309) 782-0726.

Distribution Statement A: Approved for public release: distribution is unlimited.

TABLE OF CONTENTS

	Page		Page
<b>Introduction</b> .....	I-1	<b>Section 0402</b>	
<b>Section 0130</b>		Engine Continued .....	0402-2
Wheels, Tires, Tracks .....	0130-1	<b>Section 0403</b>	
<b>Section 0260</b>		Engine Continued .....	0403-1
Axles and Suspension Systems .....	0260-2	<b>Section 0404</b>	
<b>Section 0400</b>		Engine Continued .....	0404-2
Engine .....	0400-2	<b>Section 0407</b>	
<b>Section 0401</b>		Engine Continued .....	0407-1
Engine Continued .....	0401-1		

**Thanks very much for your reading,  
Want to get more information,  
Please click here, Then get the complete  
manual**

**JustClickHere** 

**NOTE:**

**If there is no response to click on the link above,  
please download the PDF document first, and then  
click on it.**

**Have any questions please write to me:  
[admin@servicemanualperfect.com](mailto:admin@servicemanualperfect.com)**

Page	Page
<b>Section 0408</b> Engine Continued..... 0408-1	<b>Section 0530</b> Engine Auxiliary System Continued..... 0530-2
<b>Section 0409</b> Engine Continued..... 0409-2	<b>Section 0560</b> Engine Auxiliary System Continued..... 0560-2
<b>Section 0410</b> Engine Continued..... 0410-2	<b>Section 1320</b> Miscellaneous Vehicle..... 1320-2
<b>Section 0413</b> Engine Continued..... 0413-1	<b>Section 1369</b> Miscellaneous Vehicle Continued..... 1369-2
<b>Section 0414</b> Engine Continued..... 0414-1	<b>Section 1671A</b> Electrical System ..... 1671A-2
<b>Section 0416</b> Engine Continued..... 0416-2	<b>Section 1672</b> Electrical System Continued..... 1672-1
<b>Section 0417</b> Engine Continued..... 0417-2	<b>Section 1673A</b> Electrical System Continued..... 1673A-2
<b>Section 0418</b> Engine Continued..... 0418-2	<b>Section 1674</b> Electrical System Continued..... 1674-2
<b>Section 0419</b> Engine Continued..... 0419-2	<b>Section 1740</b> Frame, Chassis or Supporting Structure..... 1740-2
<b>Section 0420</b> Engine Continued..... 0420-2	<b>Section 1801A</b> Operator's Station ..... 1801A-2
<b>Section 0421</b> Engine Continued..... 0421-2	<b>Section 1810</b> Operator's Station Continued ..... 1810-2
<b>Section 0422</b> Engine Continued..... 0422-1	<b>Section 1821</b> Operator's Station Continued ..... 1821-2
<b>Section 0423</b> Engine Continued..... 0423-2	<b>Section 1830</b> Operator's Station Continued ..... 1830-2
<b>Section 0429</b> Engine Continued..... 0429-2	<b>Section 1910</b> Sheet Metal and Styling ..... 1910-2
<b>Section 0433</b> Engine Continued..... 0433-1	<b>Section 1913A</b> Sheet Metal and Styling Continued..... 1913A-2
<b>Section 0452</b> Engine Continued..... 0452-1	<b>Section 1913B</b> Sheet Metal and Styling Continued..... 1913B-2
<b>Section 0505</b> Engine Auxiliary System ..... 0505-2	<b>Section 1919</b> Sheet Metal and Styling Continued..... 1919-2
<b>Section 0510</b> Engine Auxiliary System Continued... 0510-2	<b>Section 2002</b> Safety, Convenience and Miscellaneous ..... 2002-2
<b>Section 0515</b> Engine Auxiliary System Continued... 0515-2	<b>Section 2003</b> Safety, Convenience and Miscellaneous Continued ..... 2003-2
<b>Section 0520</b> Engine Auxiliary System Continued... 0520-2	

**Section 2004A**

Safety, Convenience and  
Miscellaneous Continued ..... 2004A-2

**Section 2005A**

Safety, Convenience and  
Miscellaneous Continued ..... 2005A-2

**Section 2013B**

Safety, Convenience and  
Miscellaneous Continued ..... 2013B-2

**Section 2160**

Vehicle Main Hydraulic System ..... 2160-2

**Section 2162A**

Vehicle Main Hydraulic System  
Continued ..... 2162A-2

**Section 2163A**

Vehicle Main Hydraulic System  
Continued ..... 2163A-1

**Section 2163B**

Vehicle Main Hydraulic System  
Continued ..... 2163B-1

**Section 2200**

Compressor ..... 2200-2

**Section 2201A**

Compressor Continued ..... 2201A-2

**Section 3301A**

Excavator ..... 3301A-1

**Section 3302**

Excavator Continued..... 3302-2

**Section 3315**

Excavator Continued..... 3315-2

**Section 3340**

Excavator Continued..... 3340-2

**Section 3360**

Excavator Continued..... 3360-2

**Section 3362A**

Excavator Continued..... 3362A-2

**Section 4360**

Swing, Rotation or Pivoting System .. 4360-2

**Section 4400**

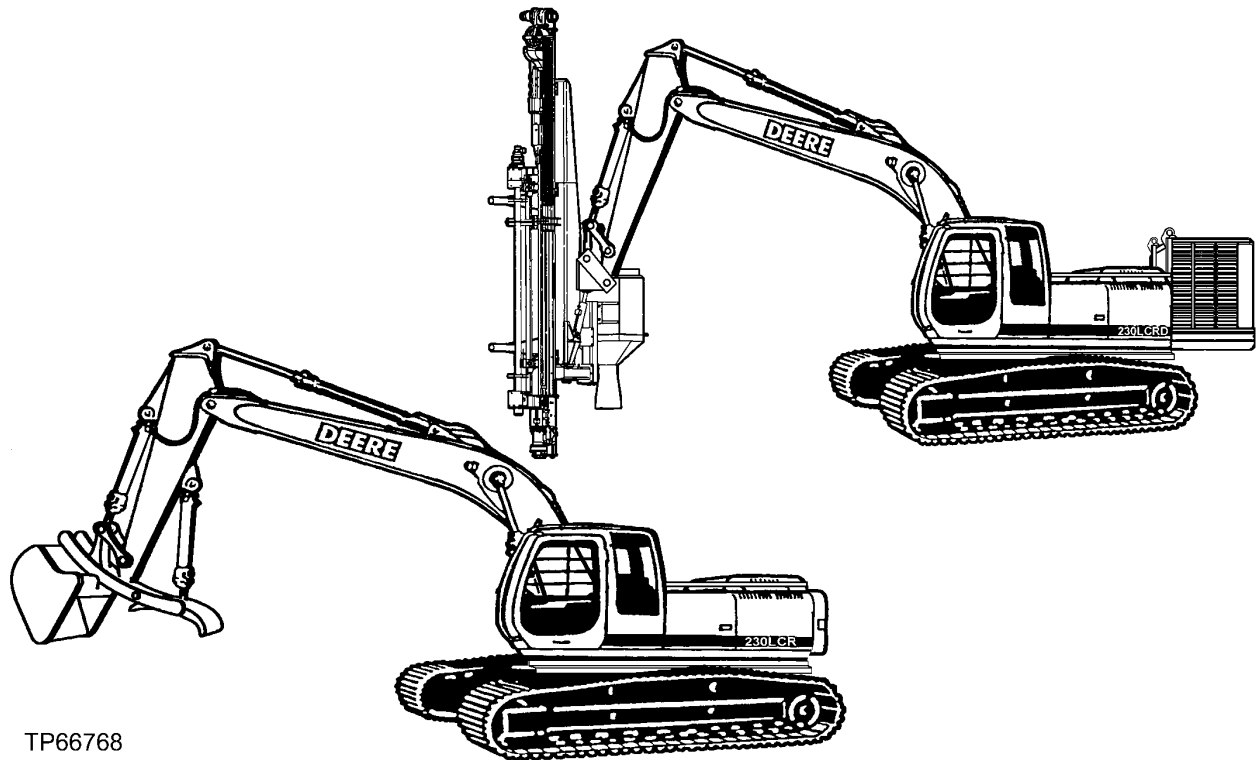
Rock Drill ..... 4400-1

**BLANK**



## INTRODUCTION AND CUSTOMER INFORMATION

TP66768 -UN-28OCT99



TP66768

LEFT HAND VIEW OF JOHN DEERE 230LCR AND 230LCRD EXCAVATOR  
(MANUFACTURED 1999- )

### TO THE CUSTOMER

THE PART NUMBERS IN THIS PARTS CATALOG WERE CORRECT AT THE TIME YOUR CATALOG WAS PUBLISHED. IT IS OUR POLICY TO CONSTANTLY IMPROVE OUR MACHINES AND, THEREFORE, PART NUMBERS MAY CHANGE. WHEN ORDERING PARTS, VERIFY PART NUMBERS THROUGH YOUR DEALER'S MICROFICHE WHICH IS UP-TO-DATE.

(SPECIFICATIONS AND DESIGN SUBJECT TO CHANGE WITHOUT NOTICE.)

**SERIAL NUMBER LOCATIONS**

EACH 230LCR AND 230LCRD HAS SEVEN SERIAL NUMBER PLATES:

A PRODUCT IDENTIFICATION NUMBER PLATE, AN ENGINE SERIAL NUMBER PLATE, A HYDRAULIC PUMP SERIAL NUMBER PLATE, A LEFT-HAND PROPEL MOTOR SERIAL NUMBER PLATE, A RIGHT-HAND PROPEL MOTOR SERIAL NUMBER PLATE, A SWING MOTOR SERIAL NUMBER PLATE AND MAIN CONTROL VALVE.

THE PRODUCT IDENTIFICATION PLATE IS LOCATED ON THE MAIN FRAME UNDER THE RIGHT-HAND FRONT CORNER OF THE CAB.

THE ENGINE SERIAL NUMBER PLATE IS LOCATED ON THE RIGHT SIDE OF THE CYLINDER BLOCK NEAR THE FUEL PUMP.

THE HYDRAULIC PUMP SERIAL NUMBER PLATE IS LOCATED NEAR THE FRONT OF THE HYDRAULIC PUMP.

THE SWING MOTOR SERIAL NUMBER PLATE IS LOCATED ON THE TOP OF THE SWING MOTOR.

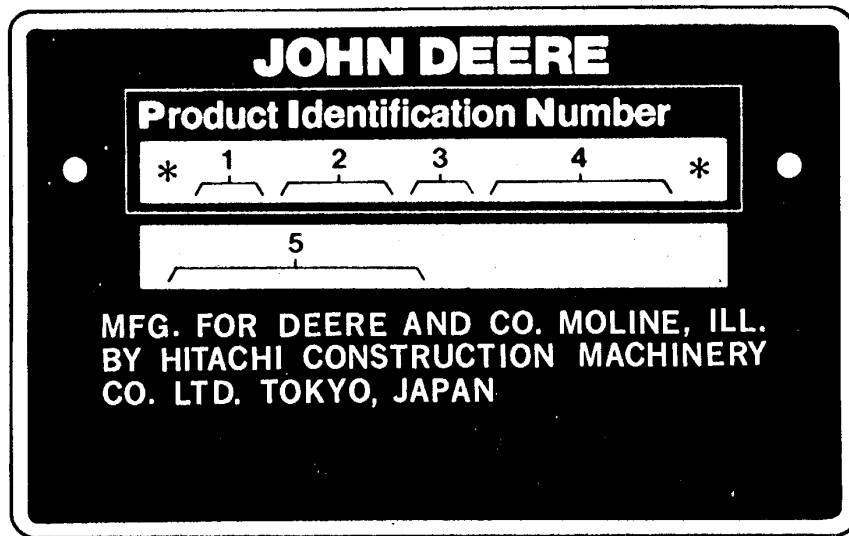
THE PROPEL MOTOR SERIAL NUMBER PLATE IS LOCATED ON THE REAR OF THE PROPEL MOTOR.

THE CONTROL VALVE SERIAL NUMBER PLATE IS LOCATED ON THE FRONT LEFT-HAND SIDE  
LEFT SIDE, RIGHT SIDE, FRONT AND REAR OF THE EXCAVATOR ARE VIEWED BY FACING IN THE DIRECTION OF THE EXCAVATOR FORWARD TRAVEL.

IF PRODUCT IDENTIFICATION NUMBERS OR SERIAL NUMBERS ARE REQUIRED FOR WARRANTY CLAIMS OR CORRESPONDENCE PERTAINING TO THIS PRODUCT. IT IS EXTREMELY IMPORTANT THAT ALL CHARACTERS BE FURNISHED. THIS POINT CANNOT BE OVEREMPHASIZED.

**PRODUCT IDENTIFICATION NUMBER**

TP16492 -UN-01JAN94



TP16492

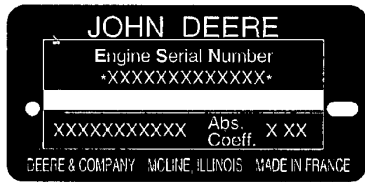
- |  |                         |
|--|-------------------------|
| 1. DESIGNATES EXCAVATOR MANUFACTURER.  | FF - JOHN DEERE-HITACHI |
| 2. DESIGNATES EXCAVATOR MODEL          | 230                     |
| 3. DESIGNATES EXCAVATOR CONFIGURATION. | 'LCR AND LCRD           |
| 4. DESIGNATES EXCAVATOR SERIAL NUMBER. | 000000                  |
| 5. DESIGNATED UNIT TYPE.               | EXCAVATOR               |

**ENGINE SERIAL NUMBER**

TP58281 -UN-26JAN98



**DUBUQUE OPTION**



**SARAN OPTION**



**TORREON OPTION**

**TP58281**

1. DESIGNATES ENGINE MANUFACTURER T-JOHN DEERE DUBUQUE WORKS
2. DESIGNATES NUMBER OF CYLINDERS AND CUBIC6068 (6.8 LITER) INCH DISPLACEMENT.
3. DESIGNATES FUEL TYPE OR SPECIAL CONDITION-TURBOCHARGED DIESEL
4. DESIGNATES ENGINE SERIAL NUMBER 123456
5. DESIGNATES THE ENGINE APPLICATION AND 6068HT 051 FACTORY USER.

## SERIAL NUMBER LISTING INFORMATION

SERIAL NUMBER INFORMATION IS LISTED TO SHOW ON WHICH MACHINES EACH PART CAN BE USED; FOR EXAMPLE:

- THE PART CAN BE USED ON ALL MACHINES.
- 000000- THE PART CAN BE USED ON ALL MACHINES BEGINNING WITH THE SERIAL NUMBER LISTED.
- 000000 THE PART CAN BE USED ON ALL MACHINES UP TO AND INCLUDING THE SERIAL NUMBER LISTED.
- 000000-000000 THE PART CAN BE USED ON ALL MACHINES BETWEEN AND INCLUDING THE SERIAL NUMBERS LISTED.

WHEN XXXXXX'S ARE LISTED IN PLACE OF A SERIAL NUMBER, A SERIAL NUMBER CHANGE WAS MADE BUT THE EXACT SERIAL NUMBER WAS NOT AVAILABLE WHEN THE CATALOG WAS PRODUCED.

## DIRECTION ARROW

ARROWS ARE USED WITH ILLUSTRATIONS TO INDICATE THE FRONT OF THE UNIT. "RIGHT-HAND" AND "LEFT-HAND" SIDES ARE DETERMINED BY FACING IN THE DIRECTION OF MACHINE FORWARD TRAVEL.

## BOX-ENCLOSED ILLUSTRATIONS

A KEY NUMBER, SHOWN IN THE PARTS LIST, IS ASSIGNED TO A BOX ENCLOSING ALL PARTS SOLD AS A SERVICE ASSEMBLY.

## BOLT AND CAP SCREW STRENGTH IDENTIFICATION

BOLTS AND CAP SCREWS REQUIRED TO HAVE HIGH-STRENGTH QUALITIES EQUIVALENT TO SAE GRADE 8 ARE IDENTIFIED THROUGHOUT THIS CATALOG BY THE DESCRIPTION HS SAE 8. ALL STANDARD BOLTS AND CAP SCREWS ARE SAE GRADE 5 OR LOWER.

## COMPLETE GOODS LISTINGS

COMPLETE GOODS ARE LISTED IN BOLD FACE TYPE. ORDER SEPARATELY. DO NOT INCLUDE ON REPLACEMENT PARTS ORDER.

## SI UNITS OF MEASURE

METRIC DIMENSIONS ARE GIVEN, WHERE APPLICABLE, THROUGHOUT THIS PARTS CATALOG.

## MODEL DIFFERENCES

PARTS THAT ARE USED ON 230LCR (TYPE I) AND NOT 230LCRD (TYPE II) WILL BE IDENTIFIED BY AN "X" IN THE MODEL COLUMN. ABSENCE OF AN "X" INDICATES PARTS ARE COMMON TO BOTH THE 230LCR (TYPE I) AND THE 230LCRD (TYPE II).

## ORDERING PARTS FOR THE HYDRAULIC EXCAVATOR (HYEX) TYPE I and TYPE II

### 1. MILSTRIP requisitioning through Direct Vendor Delivery (DVD):

Submit a requisition using the normal MILSTRIP process. The CAGE Codes for John Deere, Indeco, Ingersoll-Rand and Montebert are listed below with the section of the parts manual to which each apply. The CAGE Code must be input along with the desired part number. The part numbers contained in the HYEX parts manual cross-reference to NSNs in FEDLOG. The requisition will be processed electronically through DLA or TACOM. Delivery of parts to units located within CONUS will be shipped directly to the originator. Delivery of parts to OCONUS locations will be shipped to the appropriate CONUS Containerization/Consolidation Point (CCP) for trans-shipment on military vessel/aircraft to the OCONUS-based CCP.

### 2. MILSTRIP requisitioning through wholesale system:

Submit a requisition using the normal MILSTRIP process. The CAGE Code must be input along with the desired part number. The part numbers contained in the HYEX parts manual cross-reference to NSNs in FEDLOG. If there is stock in the wholesale system, the part will be shipped from a DLA supply depot.

### 3. Local Purchase:

Parts can be purchased from the local dealer using the IMPAC card.

### 4. Phone or E-Mail:

Units can also telephone in requisitions directly to TACOM (DSN 786-6474/COMM (810) 574-6474 or DSN 786-6303/COMM (810) 574-6303). For further assistance, you can email TACOM Weapon System Manager, Harriet Stewart (stewarth@tacom.army.mil) or Maintenance System Manager, Geri Padden (paddeng@tacom.army.mil).

### 5. TM Section CAGE Code:

When ordering part for the John Deere Model 230 LCR and Model 230 LCRD with Rock Drill, use the following CAGE Codes with the required part number illustrated in this manual.

Section	Nomenclature	Manufacture	CAGE Code
Section 0130	Tracks	John Deere	1J955
Section 0260	Suspension	John Deere	1J955
Section 0400-0452	Engine	John Deere	1J955
Section 0505-0560	Engine Auxiliary Sys	John Deere	1J955
Section 1320-1369	Miscellaneous Veh.	John Deere	1J955
Section 1671A-1674	Electrical Sys	John Deere	1J955
Section 1740	Frame/Support Struc.	John Deere	1J955
Section 1801A-1830	Operator's Station	John Deere	1J955
Section 1910-1919	Sheet Metal Styling	John Deere	1J955
Section 2002-2013B	Safety, Convenience	John Deere	1J955
Section 2160-2163B	Vehicle Main Hydraulic	John Deere	1J955
Section 2200-2201A	Compressor	Ingersoll-Rand	33968
Section 3301A-3362A	Excavator	John Deere	1J955
Section 4360	Swing Rotation & Pivot	John Deere	1J955
Section 4400	Rock Drill	Montebert	F5267

**BLANK**

ALPHABETICAL INDEX

GRID	PAGE	GRID	PAGE
<b>A</b>			
1C17	ACCESS COVER, INJECTION PUMP GEAR.....0402-2	2H22	ANTI-DRIFT F/BUCKET CYLINDER KIT .....2162A-2
1E4	ADAPTER, ENGINE COOLANT .....0419-2	1G16	ANTI-SKID TAPE .....1320-2
1D3	ADAPTER, ENGINE FRONT PLATE.....0404-6	1F11	ARCTIC START KIT (TYPE I).....0505-10
1B5	ADJUSTER .....0130-10	1F13	ARCTIC START KIT (TYPE II) .....0505-12
2C23	ADJUSTER, SEAT .....1821-2	3D3	ARM ASSEMBLY, STANDARD .....3340-2
2D1	ADJUSTER, SEAT STAND .....1821-4	3G7	ARM CYLINDER.....3360-76
2E17	AIR CIRCULATING FAN .....1830-38	3E23	ARM IN PRESSURE SWITCH.....3360-44
1G3	AIR CLEANER .....0520-2	3D3	ARM, STANDARD, 2.96M .....3340-2
1G5	AIR CLEANER PIPINGS .....0520-4	2B9	ARM, WINDSHIELD WIPER .....1810-6
1G5	AIR CLEANER SUPPORT.....0520-4	1E11	ARMATURE, STARTER .....0422-2
2D20	AIR CONDITIONER PIPING (UNIT, ENGINE).....1830-16	2C23	ARMREST, SEAT .....1821-2
2D16	AIR CONDITIONER (COMPRESSOR, CONDENSER, TANK) .....1830-12	1C19	ARMS, ROCKER .....0402-4
2E3	AIR CONDITIONER BLOWER COMPONENTS .....1830-24	2C5	ASHTRAY .....1810-26
2D24	AIR CONDITIONER COMPONENTS.....1830-20	1H20	ATTACHMENT MODE KIT.....1674-24
2E1	AIR CONDITIONER COMPONENTS (RELAY, FILTER, BLOWER) .....1830-22	1I8	ATTACHMENT MODE KIT.....1674-40
2D16	AIR CONDITIONER COMPRESSOR BELT .....1830-12	3H4	ATTACHMENTS .....3301A-2
2D22	AIR CONDITIONER COMPRESSOR COMPONENTS .....1830-18	1H1	AUTO IDLE INDICATOR .....1674-4
2D16	AIR CONDITIONER COMPRESSOR PIPING TO CONDENSER.....1830-12	2I9	AUXILIARY AIR LINES.....2201A-4
2D16	AIR CONDITIONER COMPRESSOR PULLEY .....1830-12	3G11	AUXILIARY ELECTRIC FOOT SWITCH .....3360-80
2D16	AIR CONDITIONER CONDENSER PIPING TO COMPRESSOR .....1830-12	3G13	AUXILIARY ELECTRIC HAND CONTROLLER.....3360-82
2D16	AIR CONDITIONER CONDENSOR PIPING TO TANK .....1830-12	3D1	AUXILIARY FOOT VALVE TO CONTROL VALVE HOSE .....3315-18
2E7	AIR CONDITIONER CONTROLLER .....1830-28	3G23	AUXILIARY HYDRAULIC PLUMBING .....3360-92
2D14	AIR CONDITIONER DUCT .....1830-10	2H24	AUXILIARY LINES, HYDRAULIC QUICK COUPLERS .....2163A-1
2E9	AIR CONDITIONER DUCT .....1830-30	1E16	AUXILIARY PULLEY.....0429-3
2E11	AIR CONDITIONER DUCT .....1830-32	3G15	AUXILIARY SPOOL CONTROL W/FLOW CONTROL KIT .....3360-84
2E5	AIR CONDITIONER HOUSING UNIT COMPONENTS.....1830-26	1D3	AUXILIARY DRIVE COVER .....0404-6
2D18	AIR CONDITIONER PIPING (UNIT, TANK, COMPRESSOR).....1830-14	1B3	AXLE, FRONT IDLER .....0130-8
2D18	AIR CONDITIONER PIPING TO COMPRESSOR.....1830-14	1B9	AXLE, LOWER ROLLER .....0130-14
2D20	AIR CONDITIONER PIPING TO ENGINE.....1830-16	<b>B</b>	
2D18	AIR CONDITIONER PIPING TO RECEIVING TANK .....1830-14	1H1	BACKUP ALARM .....1674-4
2D14	AIR CONDITIONER SYSTEM (CONTROLLER, WIRE HARNESS, AIR DUCT, MOUNTING) .....1830-10	2I16	BAFFLE, COMPRESSOR.....2201A-12
2D16	AIR CONDITIONER TANK PIPING TO CONDENSOR .....1830-12	2B21	BARS, WINDOW .....1810-18
2D16	AIR CONDITIONER VAPOR CONDENSER .....1830-12	2I4	BASE, COMPRESSOR.....2200-2
2D14	AIR CONTIONER MOUNTING .....1830-10	1H7	BATTERY .....1674-10
1F15	AIR COOLER .....0510-2	1H7	BATTERY BOOSTER CABLES .....1674-10
1F17	AIR COOLER PIPING .....0510-4	1H7	BATTERY RELAY.....1674-10
2D14	AIR DUCT, AIR CONDITIONER .....1830-10	1H7	BATTERY WIRE HARNESS .....1674-10
2E15	AIR DUCT, AIR CONDITIONING.....1830-36	1J3	BEARING, SWING .....1740-8
2D6	AIR DUCT, HEATER .....1830-2	1C16	BEARING, CRANKSHAFT THRUST.....0401-1
1H1	AIR FILTER RESTRICTION INDICATOR LIGHT .....1674-4	1C16	BEARINGS, MAIN.....0401-1
1D22	AIR INTAKE SYSTEM .....0414-1	1C22	BEARINGS, CONNECTING ROD .....0403-1
1D22	AIR INTAKE TUBE .....0414-1	2D16	BELT, AIR CONDITONER COMPRESSOR .....1830-12
2I22	AIR LINE .....2201A-18	1E17	BELT, IDLER TENSIONER .....0429-4
2I9	AIR LINES, AUXILIARY .....2201A-4	2D3	BELT, SEAT .....1821-6
2I7	AIR LINES, ROCK DRILL .....2201A-2	2D5	BELT, SEAT, RETRACTABLE (76MM (3") WIDE).....1821-9
1H1	ALARM, BACKUP.....1674-4	1E19	BELTS, FAN .....0429-6
1H15	ALARM, MOTION .....1674-18	2E17	BLADE, AIR CIRCULATING FAN .....1830-38
1I3	ALARM, MOTION .....1674-34	2E17	BLADE, DEFROSTER FAN .....1830-38
2G17	ALARM, OVERLOAD .....2004A-2	1F23	BLADE, FAN.....0510-10
1H11	ALARM, TRAVEL, MOUNTING HARDWARE .....1674-14	2B9	BLADE, WINDSHIELD WIPER .....1810-6
1H24	ALARM, TRAVEL, MOUNTING HARDWARE .....1674-30	1C23	BLOCK, CYLINDER .....0404-2
1G23	ALTERNATOR (45 AMP) .....1672-1	1B1	BLOCK, TRACK CHAIN SLIDE .....0130-6
1H1	ALTERNATOR LIGHT .....1674-4	2E17	BLOWER, AIR CIRCULATING FAN .....1830-38
1E13	ALTERNATOR MOUNTING BRACKETS .....0423-2	2E1	BLOWER, AIR CONDITIONER .....1830-22
1G23	ALTERNATOR PULLEY (45 AMP) .....1672-1	2E3	BLOWER, AIR CONDITIONER COMPONENTS.....1830-24
1D17	ANEROID LINE, FUEL INJECTION PUMP.....0413-4	2E17	BLOWER, DEFROSTER FAN .....1830-38
2B9	ANTENNA, RADIO .....1810-6	3D19	BOOM BOTTOM PIPINGS.....3360-16
		3D11	BOOM BOTTOM PIPINGS TO BOOM CYLINDER .....3360-8
		3G17	BOOM CYLINDER LOAD LOWERING VALVE KIT .....3360-86
		3G19	BOOM CYLINDER LOAD LOWERING VALVE KIT .....3360-88

ALPHABETICAL INDEX - CONTINUED

GRID	PAGE	GRID	PAGE
3G21	BOOM CYLINDER LOAD LOWERING VALVE KIT ..... 3360-90	2C3	CAB COMPONENTS ..... 1810-24
3D11	BOOM CYLINDER PIPINGS TO BOOM BOTTOM PIPINGS ..... 3360-8	2C1	CAB COMPONENTS (DOOR CATCH) ..... 1810-22
3D11	BOOM CYLINDER PIPINGS TO CONTROL VALVE ..... 3360-8	2B13	CAB COMPONENTS (DOOR) ..... 1810-10
3G5	BOOM CYLINDER, LEFT ..... 3360-74	2B15	CAB COMPONENTS (DOOR) ..... 1810-12
3G3	BOOM CYLINDER, RIGHT ..... 3360-72	2B17	CAB COMPONENTS (FRONT) ..... 1810-14
1I15	BOOM LIGHTS ..... 1673A-2	2B19	CAB COMPONENTS (FRONT) ..... 1810-16
2I22	BOOM LINE ..... 2201A-18	2B21	CAB COMPONENTS (RIGHT SIDE) ..... 1810-18
3F17	BOOM PIPING ..... 3360-62	2B23	CAB COMPONENTS (TOP HATCH) ..... 1810-20
3E23	BOOM UP PRESSURE SWITCH ..... 3360-44	2B11	CAB COMPONENTS (TOP, LEFT SIDE, REAR) ..... 1810-8
1H7	BOOSTER CABLES, BATTERY ..... 1674-10	2B9	CAB COMPONENTS (WINDSHIELD WIPER, DOME LIGHT, RADIO ANTENNA, RADIO SPEAKER) ..... 1810-6
3C9	BOOT, CONTROL LEVER ..... 3315-2	2C13	CAB FLOOR PARTS ..... 1810-34
2G23	BOX, STORAGE, VANDAL PROTECTION ..... 2013B-3	2C5	CAB INSIDE RIGHT COVER ..... 1810-26
1G7	BRACE, MUFFLER ..... 0530-2	1I17	CAB LIGHTS ..... 1673A-4
3H4	BRACKET ASSEMBLY, ROCK DRILL ..... 3301A-2	2B5	CAB MOUNTING ..... 1810-2
2D16	BRACKET, AIR CONDITIONER COMPRESSOR ..... 1830-12	2G7	CAB SCREEN, FRONT UPPER ..... 1913A-2
1E6	BRACKET, FUEL FILTER ..... 0420-2	2B11	CAB TOP, HEADLINER ..... 1810-8
1D21	BRACKET, FUEL INJECTION PUMP SUPPORT ..... 0413-8	1F24	CABLE, ENGINE SPEED CONTROL ..... 0515-2
1G7	BRACKET, MUFFLER ..... 0530-2	1F9	CABLE, HEATER ..... 0505-8
1E17	BRACKET, TENSIONER ..... 0429-4	1F10	CABLE, HEATER ..... 0505-9
1E13	BRACKETS, ALTERNATOR MOUNTING ..... 0423-2	2D10	CABLE, HEATER CONTROLLER ..... 1830-6
1B22	BRAKE RELIEF VALVE, PROPEL MOTOR ..... 0260-10	1C20	CAMSHAFT ..... 0402-5
1B22	BRAKE RELIEF VALVE, TRAVEL MOTOR ..... 0260-10	1C20	CAMSHAFT GEAR ..... 0402-5
1B20	BRAKE VALVE ..... 0260-8	1G9	CAP, FUEL TANK ..... 0560-2
1B22	BRAKE VALVE COMPONENTS ..... 0260-10	1C23	CAP, MAIN BEARING ..... 0404-2
1E11	BRUSHES, STARTER ..... 0422-2	1F21	CAP, RESERVE WATER TANK ..... 0510-8
3G9	BUCKET CYLINDER ..... 3360-78	1G23	CAPACITOR, ALTERNATOR ..... 1672-1
3D3	BUCKET CYLINDER WITH STANDARD ARM ASSEMBLY ..... 3340-2	2D6	CAR HEATER ..... 1830-2
2H22	BUCKET CYLINDER, ANTI-DRIFT KIT ..... 2162A-2	2D8	CAR HEATER COMPONENTS ..... 1830-4
3D3	BUCKET LINKAGE, STANDARD ARM ASSEMBLY ..... 3340-2	2C1	CATCH, CAB DOOR ..... 1810-22
2I5	BUCKET PIN-UP DATA ..... 2200-3	1C3	CENTER JOINT ..... 0260-16
2I8	BUCKET PIN-UP DATA ..... 2201A-3	1B14	CENTER JOINT ATTACHMENTS ..... 0260-2
2I10	BUCKET PIN-UP DATA ..... 2201A-5	3D17	CENTER JOINT PIPINGS TO CONTROL VALVE ..... 3360-14
2I12	BUCKET PIN-UP DATA ..... 2201A-7	3D9	CENTER JOINT PIPINGS TO RETURN PIPINGS ..... 3360-6
2I14	BUCKET PIN-UP DATA ..... 2201A-9	3E21	CENTER JOINT PIPINGS TO SOLENOID VALVE ..... 3360-42
2I17	BUCKET PIN-UP DATA ..... 2201A-13	1C7	CENTER JOINT PIPINGS TO TRAVEL DEVICE ..... 0260-20
2I19	BUCKET PIN-UP DATA ..... 2201A-15	1C5	CENTER JOINT SUPPORT ..... 0260-18
2I21	BUCKET PIN-UP DATA ..... 2201A-17	1B1	CHAIN SLIDE BLOCK ..... 0130-6
2I23	BUCKET PIN-UP DATA ..... 2201A-19	1B11	CHAIN, TRACK ..... 0130-16
3B24	BUCKET PIN-UP DATA ..... 3302-18	1F15	CHARGE OIL COOLER ..... 0510-2
3C2	BUCKET PIN-UP DATA ..... 3302-21	2C5	CIGAR LIGHTER ..... 1810-26
3C4	BUCKET PIN-UP DATA ..... 3302-23	1J3	CIRCLE, SWING BEARING ..... 1740-8
3C6	BUCKET PIN-UP DATA ..... 3302-25	1H1	CIRCUIT BOARD, MONITOR ..... 1674-4
3B16	BUCKET TOOTH ASSEMBLY, HEAVY DUTY HIGH CAPACITY, 310 SERIES ..... 3302-10	3H4	CLAMP ASSEMBLY, MATERIAL ..... 3301A-2
3B18	BUCKET TOOTH ASSEMBLY, HEAVY DUTY HIGH CAPACITY, 400 SERIES ..... 3302-12	1E8	CLAMPS, FUEL FILTER LINES ..... 0420-4
3B20	BUCKET TOOTH ASSEMBLY, SEVERE DUTY CAST LIP ..... 3302-14	1G3	CLEANER, AIR ..... 0520-2
3B22	BUCKET TOOTH ASSEMBLY, SEVERE DUTY PLATE LIP ..... 3302-16	1G5	CLEANER, AIR, SUPPORT ..... 0520-4
3B10	BUCKET, DITCH CLEANING ..... 3302-4	1E11	COIL, STARTER ..... 0422-2
3B8	BUCKET, GENERAL PURPOSE ..... 3302-2	1F3	COLD WEATHER STARTING AID ..... 0505-2
3B14	BUCKET, TOOTH ASSEMBLY, GENERAL PURPOSE ..... 3302-8	2I16	COMPRESSOR BAFFLE ..... 2201A-12
1H15	BUZZER, MOTION ALARM ..... 1674-18	2I4	COMPRESSOR BASE ..... 2200-2
1I3	BUZZER, MOTION ALARM ..... 1674-34	2D16	COMPRESSOR BELT, AIR CONDITIONER ..... 1830-12
1E10	BY-PASS START LABEL ..... 0422-1	2I16	COMPRESSOR DOORS ..... 2201A-12
1E11	BYPASS START LABEL ..... 0422-2	2I4	COMPRESSOR FRAME ..... 2200-2
	<b>C</b>	2I16	COMPRESSOR GRILLE ..... 2201A-12
2B7	CAB ..... 1810-4	2I16	COMPRESSOR HOOD/DOORS/BAFFLE/GRILLE ..... 2201A-12
		2I4	COMPRESSOR MOUNT ..... 2200-2
		2I4	COMPRESSOR MOUNT/FRAME/ BASE/SKIRT ..... 2200-2
		2D18	COMPRESSOR PIPING TO AIR CONDITIONER ..... 1830-14
		2D16	COMPRESSOR PULLEY, AIR CONDITIONER ..... 1830-12
		2I4	COMPRESSOR SKIRT ..... 2200-2
		2D16	COMPRESSOR WIRE HARNESS, AIR CONDITIONER ..... 1830-12
		2I18	COMPRESSOR-EXCAVATOR, FUEL LINES, KIT ..... 2201A-14
		2D16	COMPRESSOR, AIR CONDITIONER ..... 1830-12
		2D22	COMPRESSOR, AIR CONDITIONER COMPONENTS ..... 1830-18



ALPHABETICAL INDEX - CONTINUED

GRID	PAGE	GRID	PAGE
2E7	COMPUTER, AIR CONDITIONER CONTROLLER.....	1830-28	
2D16	CONDENSER BRACKET.....	1830-12	
2D16	CONDENSER, AIR CONDITIONER.....	1830-12	
1C22	CONNECTING ROD.....	0403-1	
1C22	CONNECTING ROD BEARINGS.....	0403-1	
3H1	CONNECTIONS, HYDRAULIC.....	3360-94	
1H22	CONNECTORS, WEATHERPACK.....	1674-26	
1I10	CONNECTORS, WEATHERPACK.....	1674-42	
2C17	CONSOLE.....	1810-38	
2C19	CONSOLE COVER.....	1810-40	
2C21	CONSOLE COVER.....	1810-42	
2I20	CONSOLE MOUNT, ROCK DRILL.....	2201A-16	
3G15	CONTROL KIT, W/FLOW, AUXILIARY SPOOL.....	3360-84	
3C9	CONTROL LEVER.....	3315-2	
1D19	CONTROL LEVER, FUEL INJECTION PUMP.....	0413-6	
3C15	CONTROL LEVER, PROPEL.....	3315-8	
3D23	CONTROL VALVE.....	3360-20	
3E3	CONTROL VALVE (COMPONENTS).....	3360-24	
3E5	CONTROL VALVE (COMPONENTS).....	3360-26	
3E7	CONTROL VALVE (COMPONENTS).....	3360-28	
3E9	CONTROL VALVE (COMPONENTS).....	3360-30	
3E11	CONTROL VALVE (COMPONENTS).....	3360-32	
3D17	CONTROL VALVE PIPINGS TO CENTER JOINT.....	3360-14	
3E23	CONTROL VALVE PIPINGS TO FLOW CONTROL VALVE.....	3360-44	
3F1	CONTROL VALVE PIPINGS TO FLOW CONTROL VALVE.....	3360-46	
3D13	CONTROL VALVE PIPINGS TO FRONT PIPINGS.....	3360-10	
2H17	CONTROL VALVE PIPINGS TO HYDRAULIC PUMP.....	2160-16	
3D19	CONTROL VALVE PIPINGS TO MAIN PIPINGS.....	3360-16	
3F13	CONTROL VALVE PIPINGS TO OIL FILTER.....	3360-58	
3D5	CONTROL VALVE PIPINGS TO OIL TANK.....	3360-2	
3F3	CONTROL VALVE PIPINGS TO OIL TANK.....	3360-48	
3F13	CONTROL VALVE PIPINGS TO OIL TANK.....	3360-58	
3D7	CONTROL VALVE PIPINGS TO RADIATOR.....	3360-4	
3E17	CONTROL VALVE PIPINGS TO SOLENOID VALVE.....	3360-38	
3E21	CONTROL VALVE PIPINGS TO SOLENOID VALVE.....	3360-42	
3D9	CONTROL VALVE PIPINGS TO SWING DEVICE.....	3360-6	
3D15	CONTROL VALVE PIPINGS TO SWING DEVICE.....	3360-12	
3E21	CONTROL VALVE PIPINGS TO SWING DEVICE.....	3360-42	
3F5	CONTROL VALVE PIPINGS TO TRAVEL PILOT VALVE.....	3360-50	
3E1	CONTROL VALVE SUPPORT.....	3360-22	
3D1	CONTROL VALVE TO AUXILIARY FOOT VALVE HOSE.....	3315-18	
3D11	CONTROL VALVE TO BOOM CYLINDER PIPINGS.....	3360-8	
3F21	CONTROL VALVE, FLOW.....	3360-66	
1D19	CONTROL VALVE, FUEL INJECTION PUMP.....	0413-6	
3D1	CONTROL, AUXILIARY FOOT.....	3315-18	
2D6	CONTROL, HEATER.....	1830-2	
2D14	CONTROLLER, AIR CONDITIONER.....	1830-10	
2E7	CONTROLLER, AIR CONDITIONER.....	1830-28	
1G24	CONTROLLER, EPVC.....	1674-2	
2D10	CONTROLLER, HEATER.....	1830-6	
3H7	CONTROLS, PILOT, FOR HAND HELD TOOLS.....	3362A-4	
3H9	CONTROLS, PILOT, FOR HAND HELD TOOLS.....	3362A-6	
3H11	CONTROLS, PILOT, ROCK DRILL HYDRAULICS.....	3362A-8	
1H18	CONVERTER (24-VOLT TO 12-VOLT).....	1674-21	
1I6	CONVERTER (24-VOLT TO 12-VOLT).....	1674-37	
2I15	COOLANT KIT.....	2201A-11	
1H1	COOLANT LEVEL LIGHT.....	1674-4	
1H1	COOLANT TEMPERATURE GAUGE.....	1674-4	
1F15	COOLER, AIR.....	0510-2	
1F15	COOLER, OIL.....	0510-2	
1G20	COOLSCAN PLUS TEST KIT.....	1369-5	
1J1	COUNTERWEIGHT.....	1740-6	
2I2	COUPLERS, QUICK, HYDRAULIC, F/ROCK DRILL.....	2163B-1	
2H5	COUPLING, PUMP.....	2160-4	
2F1	COVER (CAB TOP FRONT LEFT SIDE).....	1910-6	
2F3	COVER (CENTER FRONT TOP).....	1910-8	
2F5	COVER (CENTER VERTICAL).....	1910-10	
2F7	COVER (FRONT LEFT SIDE).....	1910-12	
2E24	COVER (LEFT FRONT SIDE).....	1910-4	
2F9	COVER (RIGHT SIDE).....	1910-14	
1C17	COVER, ACCESS, INJECTION PUMP GEAR.....	0402-2	
1D3	COVER, AUXILLARY DRIVE.....	0404-6	
1H7	COVER, BATTERY.....	1674-10	
2C5	COVER, CAB INSIDE RIGHT.....	1810-26	
1B14	COVER, CENTER JOINT.....	0260-2	
2C19	COVER, CONSOLE.....	1810-40	
2C21	COVER, CONSOLE.....	1810-42	
2F17	COVER, ENGINE.....	1910-22	
1E9	COVER, FUEL TRANSFER PUMP.....	0421-2	
2C7	COVER, LOWER MONITOR.....	1810-28	
1D4	COVER, OIL FILLER OPENING.....	0407-1	
1C9	COVER, PROPEL MOTOR.....	0260-22	
1C21	COVER, ROCKER ARM.....	0402-6	
1B14	COVER, ROTARY MANIFOLD.....	0260-2	
2F11	COVER, SIDE SHIELDS.....	1910-16	
1J5	COVER, SWING BEARING GREASE BATH.....	1740-10	
1E2	COVER, THERMOSTAT.....	0418-2	
1C17	COVER, TIMING GEAR.....	0402-2	
2F19	COVER, TOOL BOX.....	1910-24	
1A24	COVER, TRACK.....	0130-4	
1C9	COVER, TRAVEL MOTOR.....	0260-22	
2G1	COVER, UNDER.....	1910-30	
2F13	COVER, UNDER, LEFT SIDE.....	1910-18	
2E22	COVER, WINDOW.....	1910-2	
1C16	CRANKSHAFT.....	0401-1	
1E15	CRANKSHAFT DAMPENERS.....	0429-2	
1C16	CRANKSHAFT GEAR.....	0401-1	
1E15	CRANKSHAFT PULLEY.....	0429-2	
1C16	CRANKSHAFT THRUST BEARING.....	0401-1	
2C23	CUSHION, SEAT.....	1821-2	
3B10	CUTTING EDGE, DITCH CLEANING BUCKET.....	3302-4	
3B8	CUTTING EDGE, GENERAL PURPOSE BUCKET.....	3302-2	
3B12	CUTTING EDGES, ESCO.....	3302-6	
1C23	CYLINDER BLOCK.....	0404-2	
1D24	CYLINDER BLOCK OIL LINE TO TURBOCHARGER.....	0416-3	
1D11	CYLINDER HEAD.....	0409-2	
1D11	CYLINDER HEAD GASKET.....	0409-2	
1E23	CYLINDER HEAD REMOVAL GASKET SET.....	0452-1	
1C22	CYLINDER LINER.....	0403-1	
1C22	CYLINDER LINER O-RING KIT.....	0403-1	
3G7	CYLINDER, ARM.....	3360-76	
3G5	CYLINDER, BOOM, LEFT.....	3360-74	
3G3	CYLINDER, BOOM, RIGHT.....	3360-72	
3G9	CYLINDER, BUCKET.....	3360-78	
3D3	CYLINDER, BUCKET, WITH STANDARD ARM ASSEMBLY.....	3340-2	
1F3	CYLINDER, ETHER START FLUID.....	0505-2	
3G5	CYLINDER, LEFT BOOM.....	3360-74	
3G3	CYLINDER, RIGHT BOOM.....	3360-72	
D			
2H5	DAMPENER DRIVE, PUMP.....	2160-4	
1E15	DAMPENER, CRANKSHAFT.....	0429-2	
3C23	DAMPENER, PROPEL LEVER.....	3315-16	
3C23	DAMPENER, TRAVEL LEVER.....	3315-16	
3G11	DECAL, AUXILIARY CONTROL.....	3360-80	

ALPHABETICAL INDEX - CONTINUED

GRID		PAGE	GRID		PAGE
1E11	DECAL, BYPASS START.....	0422-2	2F17	ENGINE COVER .....	1910-22
2H19	DECAL, HYDRAULIC FILTER RESTRICTION INDICATOR .....	2160-18	1E21	ENGINE FLYWHEEL .....	0433-1
1C21	DECAL, MEDALLION ENGINE .....	0402-6	1E22	ENGINE FLYWHEEL HOUSING .....	0433-2
1E10	DECAL, STARTING MOTOR .....	0422-1	1D3	ENGINE FRONT PLATE .....	0404-6
1G16	DECALS AND LABELS .....	1320-2	1E24	ENGINE MAJOR OVERHAUL GASKET SET .....	0452-2
2G19	DECONTAMINATION CAN MOUNT .....	2005A-2	1C14	ENGINE MOUNTING .....	0400-2
2E17	DEFROSTER FAN .....	1830-38	1C23	ENGINE OIL BY-PASS VALVE .....	0404-2
2H17	DELIVERY PIPINGS.....	2160-16	1E4	ENGINE OIL COOLER.....	0419-2
1G20	DIESELSCAN TEST KIT .....	1369-5	1D7	ENGINE OIL DIPSTICK .....	0407-4
3F3	DIG PRESSURE SWITCH.....	3360-48	1D7	ENGINE OIL DIPSTICK TUBE .....	0407-4
1H11	DIODE .....	1674-14	1C21	ENGINE OIL FILL PLUG .....	0402-6
1H24	DIODE .....	1674-30	1D5	ENGINE OIL FILTER/ADAPTER .....	0407-2
1D7	DIPSTICK TUBE, ENGINE OIL .....	0407-4	1H1	ENGINE OIL LEVEL LIGHT.....	1674-4
1D7	DIPSTICK, ENGINE OIL .....	0407-4	1D9	ENGINE OIL PAN.....	0407-6
3H14	DIPSTICK, SWING DEVICE.....	4360-2	1H1	ENGINE OIL PRESSURE LIGHT .....	1674-4
3B10	DITCH CLEANING BUCKET .....	3302-4	1D8	ENGINE OIL PUMP .....	0407-5
2B9	DOME LIGHT .....	1810-6	1D8	ENGINE OIL PUMP GEAR .....	0407-5
2B9	DOME LIGHT WIRE HARNESS .....	1810-6	1D8	ENGINE OIL PUMP HOUSING .....	0407-5
2G3	DOOR LOCK .....	1910-32	1D8	ENGINE OIL PUMP INTAKE .....	0407-5
2F23	DOOR LOCK LATCH, TOOL BOX .....	1910-28	2D20	ENGINE PIPING TO AIR CONDITIONER.....	1830-16
2B13	DOOR, CAB .....	1810-10	1G11	ENGINE PIPING TO FUEL TANK.....	0560-4
2B15	DOOR, CAB .....	1810-12	2D12	ENGINE PIPING TO HEATER.....	1830-8
2C1	DOOR, CATCH.....	1810-22	1G11	ENGINE PIPING TO WATER SEPARATOR.....	0560-4
2I16	DOORS, COMPRESSOR.....	2201A-12	1C22	ENGINE PISTON .....	0403-1
3D9	DRAIN PIPINGS (CENTER JOINT, SWING DEVICE, CONTROL VALVE) .....	3360-6	1D1	ENGINE SHORT BLOCK.....	0404-4
1E1	DRAIN, HEATER VALVE, WATER PUMP .....	0417-3	1F24	ENGINE SPEED CONTROL .....	0515-2
2I11	DRILL GREASE LINE .....	2201A-6	2H5	ENGINE SPEED SENSOR .....	2160-4
2I13	DRILL RETURN LINE .....	2201A-8	1C14	ENGINE TEMPERATURE SWITCH .....	0400-2
1D17	DRIVE GEAR, FUEL INJECTION PUMP .....	0413-4	1H17	ENGINE TEMPERATURE SWITCH .....	1674-20
1E11	DRIVE, STARTER .....	0422-2	1I5	ENGINE TEMPERATURE SWITCH .....	1674-36
3G13	DUAL CONTROL HANDLE WITH WIRING .....	3360-82	1E2	ENGINE THERMOSTAT .....	0418-2
2D14	DUCT, AIR CONDITIONER .....	1830-10	1D10	ENGINE VENTILATOR HOSE .....	0408-1
2E9	DUCT, AIR CONDITIONER .....	1830-30	3B12	ESCO BUCKET CUTTING EDGES.....	3302-6
2E11	DUCT, AIR CONDITIONER .....	1830-32	1F3	ETHER START FLUID CYLINDER .....	0505-2
2E15	DUCT, AIR, AIR CONDITIONING .....	1830-36	1F3	ETHER VALVE .....	0505-2
2D6	DUCT, HEATER .....	1830-2	2D24	EVAPORATOR, AIR CONDITIONER.....	1830-20
1F5	D10W HEATER KIT .....	0505-4	1D13	EXHAUST MANIFOLD .....	0410-2
1F7	D10W, HEATER .....	0505-6	1D13	EXHAUST MANIFOLD GASKET .....	0410-2
			1G7	EXHAUST PIPE .....	0530-2
			1D11	EXHAUST VALVE .....	0409-2
			2G15	EXTINGUISHER, FIRE (TYPE II) .....	2003-2

E

1H1	E MODE INDICATOR.....	1674-4
3B10	EAR ASSEMBLY, DITCH CLEANING BUCKET .....	3302-4
3B8	EAR ASSEMBLY, GENERAL PURPOSE BUCKET .....	3302-2
1D10	ELBOW, VENTILATOR HOSE .....	0408-1
1H7	ELECTRIC PARTS (BATTERY).....	1674-10
1H11	ELECTRIC PARTS (MAIN WIRE HARENSS).....	1674-14
1H24	ELECTRIC PARTS (MAIN WIRE HARENSS).....	1674-30
1H5	ELECTRIC PARTS (RELAYS).....	1674-8
1H9	ELECTRIC PARTS (START SWITCH) .....	1674-12
1H3	ELECTRIC PARTS (WIRE HARNESS, FUSES).....	1674-6
1H19	ELECTRICAL WIRING HARNESS KIT .....	1674-22
1I7	ELECTRICAL WIRING HARNESS KIT .....	1674-38
2G5	ELECTRICAL WIRING HARNESS KIT .....	1919-2
1G3	ELEMENT, AIR CLEANER FILTER.....	0520-2
2H13	ELEMENT, FILTER, OIL TANK .....	2160-12
1E6	ELEMENT, FUEL FILTER .....	0420-2
1G13	ELEMENT, FUEL FILTER WITH WATER SEPARATOR .....	0560-6
1F24	ENGINE CONTROL .....	0515-2
1F24	ENGINE CONTROL MOTOR.....	0515-2
1G1	ENGINE CONTROL UNIT ON CONSOLE .....	0515-4
1G1	ENGINE CONTROLLER ON CONSOLE.....	0515-4
1E4	ENGINE COOLANT ADAPTER .....	0419-2

F

1E19	FAN BELT .....	0429-6
1F23	FAN BLADE .....	0510-10
1F23	FAN BLADE SPACER .....	0510-10
2E17	FAN BLADE, AIR CIRCULATING .....	1830-38
2E17	FAN BLADE, DEFROSTER FAN.....	1830-38
1E17	FAN DRIVE HOUSING.....	0429-4
1E17	FAN DRIVE HUB .....	0429-4
1E17	FAN DRIVE PULLEY .....	0429-4
1E17	FAN DRIVE SUPPORT .....	0429-4
1F17	FAN GUARD.....	0510-4
1F17	FAN SHROUD .....	0510-4
2E3	FAN, AIR CONDITIONER BLOWER .....	1830-24
2E17	FAN, DEFROSTER.....	1830-38
1D24	FILTER OIL LINE TO TURBOCHARGER .....	0416-3
2H19	FILTER RESTRICTION INDICATOR, HYDRAULIC .....	2160-18
1D5	FILTER/ADAPTER, ENGINE OIL.....	0407-2
1G3	FILTER, AIR CLEANER .....	0520-2
2E1	FILTER, AIR CONDITIONER .....	1830-22
2E11	FILTER, AIR CONDITIONER.....	1830-32
1E6	FILTER, FUEL .....	0420-2
1G13	FILTER, FUEL WITH WATER SEPARATOR, COMPONENTS .....	0560-6

ALPHABETICAL INDEX - CONTINUED

GRID	PAGE	GRID	PAGE
2H13	FILTER, OIL TANK.....2160-12	1D21	FUEL INJECTION PUMP SOLENOID SHUT-OFF .....0413-8
1D25	FILTER, WATER PUMP.....0417-2	1D19	FUEL INJECTION PUMP THROTTLE LEVER .....0413-6
1G11	FILTER, WATER SEPARATOR.....0560-4	1D15	FUEL INJECTION SYSTEM.....0413-2
2B9	FIRE EXTINGUISHER (TYPE I) .....1810-6	1H1	FUEL LEVEL LIGHT.....1674-4
2G15	FIRE EXTINGUISHER (TYPE II) .....2003-2	2I18	FUEL LINES KIT, COMPRESSOR- EXCAVATOR .....2201A-14
2H5	FLEX COUPLING, PUMP.....2160-4	1G11	FUEL PIPINGS.....0560-4
1G9	FLOAT, FUEL TANK .....0560-2	1G9	FUEL TANK .....0560-2
2C13	FLOOR MAT.....1810-34	1G11	FUEL TANK PIPING TO ENGINE .....0560-4
2C15	FLOOR PLATE.....1810-36	1G11	FUEL TANK PIPING TO WATER SEPARATOR .....0560-4
3E23	FLOW CONTROL VALVE .....3360-44	1D19	FUEL TRANSFER PUMP.....0413-6
3F1	FLOW CONTROL VALVE .....3360-46	1E9	FUEL TRANSFER PUMP COVER.....0421-2
3F21	FLOW CONTROL VALVE .....3360-66	1H11	FUSE, ON MAIN WIRE HARNESS.....1674-14
3E23	FLOW CONTROL VALVE PIPINGS TO CONTROL VALVE .....3360-44	1H24	FUSE, ON MAIN WIRE HARNESS.....1674-30
3F1	FLOW CONTROL VALVE PIPINGS TO CONTROL VALVE .....3360-46	1H3	FUSES .....1674-6
3F9	FLOW CONTROL VALVE PIPINGS TO FRONT PILOT VALVE.....3360-54	1H11	FUSIBLE LINK .....1674-14
3F11	FLOW CONTROL VALVE PIPINGS TO FRONT PILOT VALVE.....3360-56	1H24	FUSIBLE LINK .....1674-30
3F15	FLOW CONTROL VALVE PIPINGS TO LOCK VALVE .....3360-60		
1G20	FLUID ANALYSIS PRODUCTS .....1369-5		<b>G</b>
1E21	FLYWHEEL RING GEAR.....0433-1	1E23	GASKET SET, CYLINDER HEAD REMOVAL .....0452-1
1E21	FLYWHEEL, ENGINE.....0433-1	1E24	GASKET SET, ENGINE MAJOR OVERHAUL .....0452-2
1E22	FLYWHEEL, ENGINE HOUSING.....0433-2	1E23	GASKET SET, IN CHASSIS OVERHAUL .....0452-1
3D1	FOOT CONTROL LABEL.....3315-18	1D11	GASKET, CYLINDER HEAD .....0409-2
3D1	FOOT CONTROL, REPLACEMENT, AUXILIARY.....3315-18	1D13	GASKET, EXHAUST MANIFOLD .....0410-2
3G11	FOOT SWITCH, AUXILIARY ELECTRIC .....3360-80	1C17	GASKET, TIMING GEAR COVER .....0402-2
3D1	FOOT VALVE, AUXILIARY CONTROL .....3315-18	1C21	GASKET,ROCKER ARM COVER .....0402-6
3C17	FOOTREST.....3315-10	2H13	GAUGE, LEVEL, OIL TANK.....2160-12
1I22	FRAME .....1740-2	3H14	GAUGE, LEVEL, SWING DEVICE .....4360-2
2I4	FRAME, COMPRESSOR .....2200-2	1C20	GEAR, CAMSHAFT .....0402-5
1A22	FRAME, TRACK.....0130-2	1C16	GEAR, CRANKSHAFT .....0401-1
2D16	FREON TANK.....1830-12	1D8	GEAR, ENGINE OIL PUMP.....0407-5
1B3	FRONT IDLER .....0130-8	1D17	GEAR, FUEL INJECTION PUMP .....0413-4
3C11	FRONT PILOT VALVE.....3315-4	2H11	GEAR, PUMP, COMPONENTS .....2160-10
3C13	FRONT PILOT VALVE COMPONENTS .....3315-6	3B8	GENERAL PURPOSE BUCKET .....3302-2
3F9	FRONT PILOT VALVE PIPINGS TO FLOW CONTROL VALVE .....3360-54	2B13	GLASS, CAB DOOR .....1810-10
3F11	FRONT PILOT VALVE PIPINGS TO FLOW CONTROL VALVE .....3360-56	2B15	GLASS, CAB DOOR .....1810-12
3F9	FRONT PILOT VALVE PIPINGS TO LOCK VALVE.....3360-54	2B17	GLASS, CAB FRONT WINDOW .....1810-14
3F11	FRONT PILOT VALVE PIPINGS TO LOCK VALVE.....3360-56	2B19	GLASS, CAB FRONT WINDOW .....1810-16
3F17	FRONT PIPING.....3360-62	2B11	GLASS, CAB REAR AND LEFT SIDE .....1810-8
3D13	FRONT PIPINGS TO CONTROL VALVE .....3360-10	2B21	GLASS, CAB RIGHT SIDE WINDOW .....1810-18
3D3	FRONT PIPINGS, STANDARD ARM ASSEMBLY .....3340-2	1J5	GREASE BATH COVER, SWING BEARING .....1740-10
1D3	FRONT PLATE, ENGINE .....0404-6	2I11	GREASE LINE, DRILL .....2201A-6
1E6	FUEL FILTER .....0420-2	2I16	GRILLE, COMPRESSOR .....2201A-12
1E6	FUEL FILTER BRACKET .....0420-2	3C9	GRIP, CONTROL LEVER.....3315-2
1E6	FUEL FILTER ELEMENT.....0420-2	3C15	GRIP, PROPEL CONTROL LEVER .....3315-8
1E6	FUEL FILTER HEAD .....0420-2	1H7	GROUND STRAP .....1674-10
1G13	FUEL FILTER HOUSING .....0560-6	1F17	GUARD, FAN .....0510-4
1G13	FUEL FILTER KIT .....0560-6	2G10	GUARD, LOWER FRONT WINDSHIELD .....1913B-2
1E8	FUEL FILTER LINES .....0420-4	1A24	GUARD, TRACK.....0130-4
1G11	FUEL FILTER WATER SEPARATOR .....0560-4	2E22	GUARDS, WINDOW.....1910-2
1G13	FUEL FILTER WITH WATER SEPARATOR, COMPONENTS .....0560-6	1B1	GUIDE, TRACK LINK .....0130-6
1H1	FUEL GAUGE.....1674-4		<b>H</b>
1D15	FUEL INJECTION LINES.....0413-2	2B9	HAMMER, ESCAPE .....1810-6
1D14	FUEL INJECTION NOZZLE .....0413-1	1G13	HAND PRIMER, FUEL FILTER WITH WATER SEPARATOR .....0560-6
1D17	FUEL INJECTION PUMP .....0413-4	1D19	HAND PRIMER, INJECTION PUMP .....0413-6
1D17	FUEL INJECTION PUMP ANEROID LINE .....0413-4	2F19	HANDHOLD, RIGHT SIDE.....1910-24
1D19	FUEL INJECTION PUMP CONTROL LEVER.....0413-6	2B13	HANDLE, CAB DOOR .....1810-10
1D19	FUEL INJECTION PUMP CONTROL VALVE.....0413-6	2B15	HANDLE, CAB DOOR .....1810-12
1D19	FUEL INJECTION PUMP HAND PRIMER .....0413-6	2B17	HANDLE, CAB FRONT UPPER .....1810-14
1D19	FUEL INJECTION PUMP LEVERS .....0413-6	2B19	HANDLE, CAB FRONT UPPER .....1810-16
1D19	FUEL INJECTION PUMP SHUT-OFF LEVER .....0413-6	3G13	HANDLE, PILOT DUAL CONTROL.....3360-82

ALPHABETICAL INDEX - CONTINUED

GRID	PAGE	GRID	PAGE
2B13	1810-10	3D19	3360-16
2B15	1810-12	3F13	3360-58
2B11	1810-8	3D5	3360-2
3G13	3360-82	3F3	3360-48
1H3	1674-6	3F13	3360-58
2D24	1830-20	3D7	3360-4
2D16	1830-12	3E17	3360-38
	1830-38	3E21	3360-42
2E17	1830-38	3D9	3360-6
3G11	3360-80	3D15	3360-12
2D8	1830-4	3E21	3360-42
1H19	1674-22	3F5	3360-50
1I7	1674-38		3360-44
2G5	1919-2	2D20	1830-16
2F21	1910-26	1G11	0560-4
2B23	1810-20	2D12	1830-8
2C23	1821-2	1F19	0510-6
1D11	0409-2	1G11	0560-4
1E6	0420-2	1D10	0408-1
2B11	1810-8	3E23	3360-44
2B23	1810-20		3360-46
2D6	1830-2	3F1	3360-54
1F9	0505-8		3360-56
1F10	0505-9	3F15	3360-60
2D8	1830-4	3F9	3360-54
2D6	1830-2		3360-56
2D10	1830-6	3F11	3360-56
1F7	0505-6		3360-60
1F8	0505-7	3F9	3360-54
2D12	1830-8		3360-56
2D12	1830-8	3F11	3360-56
1E1	0417-3		3360-54
2I16	2201A-12	3F9	3360-54
2E19	1801A-2	3F11	3360-56
1H13	1674-16	3D13	3360-10
1I1	1674-32	1G11	0560-4
1H13	1674-16	1G11	0560-4
1I1	1674-32	2D12	1830-8
3H6	3362A-3	2H17	2160-16
1G5	0520-4	2H15	2160-14
2D16	1830-12	3E19	3360-40
	1830-12	3F15	3360-60
2D16	1830-12	3F9	3360-54
	1830-12	3F11	3360-56
2D16	1830-12	3F15	3360-60
2D18	1830-14	3F15	3360-60
2D20	1830-16	3F7	3360-52
2D18	1830-14	3D19	3360-16
1F17	0510-4	3F13	3360-58
3D11	3360-8	3F15	3360-60
3D11	3360-8	3F13	3360-58
	3360-8	3D5	3360-2
3D11	3360-8	3F3	3360-48
3D17	3360-14	3F13	3360-58
3E21	3360-42	2H15	2160-14
1C7	0260-20	3E19	3360-40
2D18	1830-14	3F13	3360-58
3D11	3360-8	3D5	3360-2
3D17	3360-14	3F5	3360-50
3E23	3360-44		3360-4
	3360-46	3D7	3360-4
3F1	3360-46	1F19	0510-6
	3360-10	3D5	3360-2
3D13	3360-10	1F21	0510-8
2H17	2160-16	2D18	1830-14
	3315-18	3D1	3315-18