

# 410B BACKHOE LOADER



JOHN DEERE

## PARTS CATALOG

410B BACKHOE LOADER

PC1843 (Jul-05)

**Worldwide Construction and Forestry Division**

Worldwide Edition

customer service email: [admin@servicemanualperfect.com](mailto:admin@servicemanualperfect.com)



# 1A2

410B BACKHOE LOADER

## INTRODUCTION AND CUSTOMER INFORMATION

TP7579

-UN-01JAN94



*LEFT-HAND SIDE VIEW OF JOHN DEERE 410B BACKHOE LOADER  
(MANUFACTURED 1983-1986)*

### **TO THE CUSTOMER**

THE PART NUMBERS IN THIS PARTS CATALOG WERE CORRECT AT THE TIME YOUR CATALOG WAS PUBLISHED. IT IS OUR POLICY TO CONSTANTLY IMPROVE OUR MACHINES AND, THEREFORE, PART NUMBERS MAY CHANGE. WHEN ORDERING PARTS, VERIFY PART NUMBERS THROUGH YOUR DEALER'S MICROFICHE WHICH IS UP-TO-DATE.

*(SPECIFICATIONS AND DESIGN SUBJECT TO CHANGE WITHOUT NOTICE.)*

# 1A3

410B BACKHOE LOADER

## SERIAL NUMBER LOCATIONS

EACH 410B BACKHOE LOADER MAY HAVE SIX SERIAL NUMBERS: A PRODUCT IDENTIFICATION NUMBER PLATE, AN ENGINE SERIAL NUMBER PLATE, A HYDRAULIC PUMP SERIAL NUMBER PLATE, A REVERSER SERIAL NUMBER, A MFWD AXLE SERIAL NUMBER PLATE AND AN EXTENDIBLE DIPPERSTICK SERIAL NUMBER.

THE PRODUCT IDENTIFICATION NUMBER PLATE IS LOCATED ON THE RIGHT-HAND SIDE FRAME NEAR THE FRONT SUPPORT.

THE ENGINE SERIAL NUMBER PLATE IS LOCATED ON THE RIGHT SIDE OF THE CYLINDER BLOCK NEAR THE FUEL PUMP.

THE HYDRAULIC PUMP SERIAL NUMBER PLATE IS LOCATED ON THE UPPER RIGHT-HAND SIDE OF THE HYDRAULIC PUMP.

THE REVERSER SERIAL NUMBER IS STAMPED ON THE LOWER RIGHT-HAND SIDE OF THE REVERSER NEAR THE REVERSER PRESSURE REGULATING VALVE.

THE EXTENDIBLE DIPPERSTICK SERIAL NUMBER IS STAMPED ON THE TOP OF THE DIPPERSTICK NEAR THE BUCKET CYLINDER MOUNT.

THE MFWD AXLE SERIAL NUMBER PLATE IS LOCATED ON THE LEFT-HAND (REAR) SIDE OF THE MFWD AXLE HOUSING.

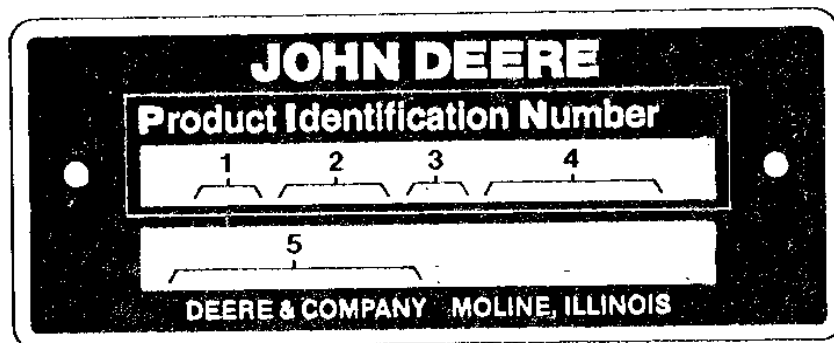
LEFT-HAND SIDE, RIGHT-HAND SIDE, FRONT AND REAR OF THE BACKHOE LOADER ARE VIEWED BY FACING IN THE DIRECTION OF THE BACKHOE LOADER FORWARD TRAVEL.

LEFT-HAND, RIGHT-HAND SIDE, FRONT AND REAR OF THE BACKHOE AND BACKHOE COMPONENTS ARE DETERMINED WHEN SEATED IN THE BACKHOE OPERATING POSITION.

IF PRODUCT IDENTIFICATION NUMBERS OR SERIAL NUMBERS ARE REQUIRED FOR WARRANTY CLAIMS OR CORRESPONDENCE PERTAINING TO THIS PRODUCT, IT IS EXTREMELY IMPORTANT THAT ALL CHARACTERS BE FURNISHED. THIS POINT CANNOT BE OVEREMPHASIZED.

## PRODUCT IDENTIFICATION NUMBER

TP16004 -UN-01JAN94



TP16004

1. DESIGNATES BACKHOE LOADER MANUFACTURER TO - JOHN DEERE DUBUQUE WORKS
2. DESIGNATES BACKHOE LOADER MODEL 410 B
3. DESIGNATES BACKHOE LOADER CONFIGURATION A - COLLAR SHIFT WITH REVERSER
4. DESIGNATES BACKHOE LOADER SERIAL NUMBER 123456
5. DESIGNATES UNIT TYPE BACKHOE LOADER

**Thanks very much for your reading,  
Want to get more information,  
Please click here, Then get the complete  
manual**

**JustClickHere** 

**NOTE:**

**If there is no response to click on the link above,  
please download the PDF document first, and then  
click on it.**

**Have any questions please write to me:  
[admin@servicemanualperfect.com](mailto:admin@servicemanualperfect.com)**

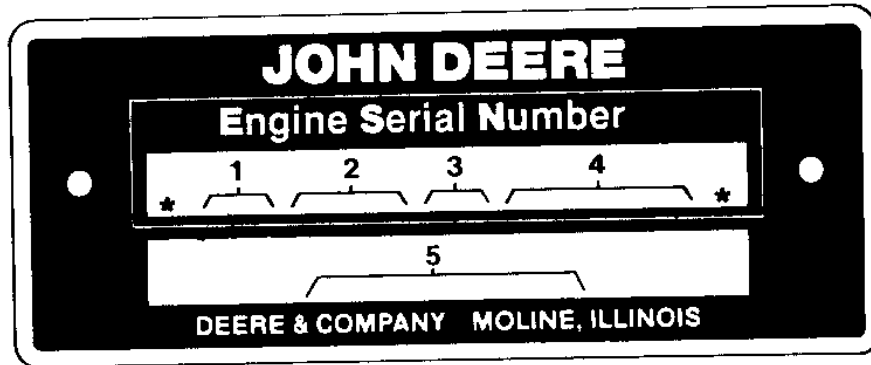
# 1A4

410B BACKHOE LOADER

## ENGINE SERIAL NUMBER PLATE

(ENGINE SERIAL NO. 607105 - 621172) (MANUFACTURED 1983-1983)  
(ENGINE SERIAL NO. 100001 - ) (MANUFACTURED 1983- )

TP8011 -UN-01JAN94



1. DESIGNATES ENGINE MANUFACTURER T-JOHN DEERE DUBUQUE WORKS
2. DESIGNATES NUMBER OF CYLINDERS AND CUBIC INCH DISPLACEMENT 4219 (3588 CM3)
3. DESIGNATES FUEL TYPE OR SPECIAL CONDITION-NATURALLY ASPIRATED DIESEL
4. DESIGNATES ENGINE SERIAL NUMBER 123456
5. DESIGNATES THE ENGINE APPLICATION AND FACTORY USER 4219DT 08

## REVERSER SERIAL NUMBER

TP9242 -UN-01JAN94



TP9242

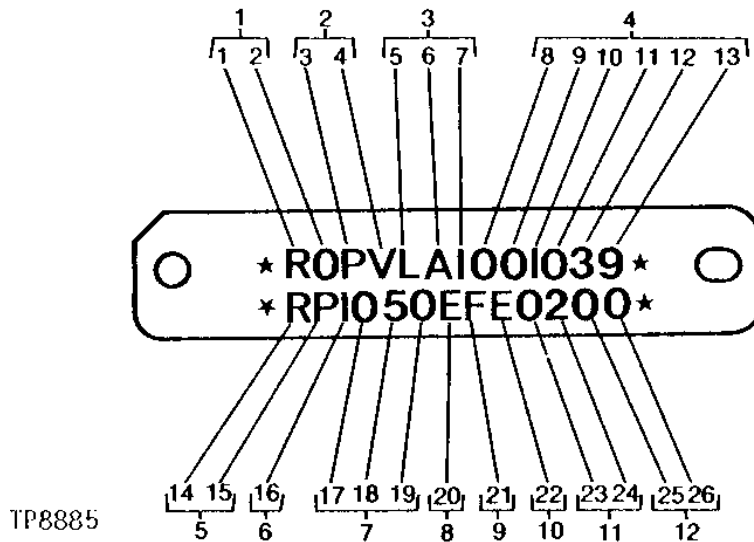
1. DESIGNATES BACKHOE LOADER MODEL NUMBER 410B
2. DESIGNATES REVERSER SERIAL NUMBER 1234

# 1A5

410B BACKHOE LOADER

## HYDRAULIC PUMP SERIAL NUMBER

TP8885 -UN-01JAN94



- |   |                       |
|---|-----------------------|
| 1. DIGITS 1 AND 2 DESIGNATE THE PRODUCING UNIT.                           | COMPONENT WORKS       |
| 2. DIGITS 3 AND 4 DESIGNATE THE PUMP TYPE.                                | VARIABLE DISPLACEMENT |
| 3. DIGITS 5, 6 AND 7 DESIGNATE THE PUMP MODEL NUMBER.                     | LA1                   |
| 4. DIGITS 8 THROUGH 13 DESIGNATE THE PUMP SERIAL NUMBER.                  | 000000                |
| 5. DIGITS 14 AND 15 DESIGNATE THE PUMP DESIGN.                            | RADIAL PUMP           |
| 6. DIGIT 16 DESIGNATES THE PUMP CLASSIFICATION.                           | 1                     |
| 7. DIGITS 17, 18 AND 19 DESIGNATE THE METRIC DISPLACEMENT PER REVOLUTION. | 050 CM3               |
| 8. DIGIT 20 DESIGNATES THE PORT ARRANGEMENT ON THE PRIMARY HOUSING.       | E                     |
| 9. DIGIT 21 DESIGNATES THE PORT ARRANGEMENT ON THE SECONDARY HOUSING.     | F                     |
| 10. DIGIT 22 DESIGNATES THE PUMP ROTATION.                                | E                     |
| 11. DIGITS 23 AND 24 DESIGNATE THE CONTROL VALVE OPTION.                  | 02                    |
| 12. DIGITS 25 AND 26 ARE BLANK.   |                       |

# 1A6

410B BACKHOE LOADER

## MFWD AXLE SERIAL NUMBER PLATE

TP19438 -UN-01JAN94

The diagram shows a rectangular serial number plate with four mounting holes. At the top, it reads 'Zahnradfabrik Passau GmbH'. Below this, there are two main sections: 'Type' and 'Serial No.'. The 'Type' field is divided into two sub-fields, labeled '4' and '5'. The 'Serial No.' field is a single large field. Below these are 'Parts List No.' (field '3') and 'Total Ratio/Version:' (fields '6' and '7'). The 'Total Ratio/Version' section is further divided into 'Ltri' (field '9') and 'List of Lubricants' (field '8'). The 'List of Lubricants' section contains three rows, each with 'TE-ML' and '8'. Below this is 'Customer's Code No.' (field '1').

TP19438

1. DESIGNATES CUSTOMER'S CODE NUMBER
2. DESIGNATES TYPE OF LUBRICANT
3. DESIGNATES ZF-PARTS-LIST NUMBER
4. DESIGNATES AXLE TYPE
5. DESIGNATES AXLE SERIAL NUMBER
6. DESIGNATES TOTAL - RATIO OF THE AXLE
7. DESIGNATES VERSION
8. DESIGNATES LUBRICANT SPECIFICATION
9. DESIGNATES CAPACITY

JOHN DEERE PART NUMBER  
M1L-L-2105B, SAE90  
4464 006 101  
AP-11H  
12345  
20.28  
SP. DIFF. (WITH OR WITHOUT SELF-LOCKING  
DIFFERENTIAL)  
05  
LTR (DIFFERENTIAL CARRIER AND PLANETARY GEAR  
^ASSEMBLY



# 1A7

410B BACKHOE LOADER

## SERIAL NUMBER LISTING INFORMATION

SERIAL NUMBER INFORMATION IS LISTED TO SHOW ON WHICH MACHINES EACH PART CAN BE USED; FOR EXAMPLE:

- THE PART CAN BE USED ON ALL MACHINES.
- 000000- THE PART CAN BE USED ON ALL MACHINES BEGINNING WITH THE SERIAL NUMBER LISTED.
- 000000 THE PART CAN BE USED ON ALL MACHINES UP TO AND INCLUDING THE SERIAL NUMBER LISTED.
- 000000-000000 THE PART CAN BE USED ON ALL MACHINES BETWEEN AND INCLUDING THE SERIAL NUMBERS LISTED.

WHEN XXXXXX'S ARE LISTED IN PLACE OF A SERIAL NUMBER, A SERIAL NUMBER CHANGE WAS MADE BUT THE EXACT SERIAL NUMBER WAS NOT AVAILABLE WHEN THE CATALOG WAS PRODUCED.

## DIRECTION ARROW

ARROWS ARE USED WITH ILLUSTRATIONS TO INDICATE THE FRONT OF THE UNIT. "RIGHT-HAND" AND "LEFT-HAND" SIDES OF THE LOADER OR TRACTOR PARTS ARE DETERMINED BY FACING IN THE DIRECTION OF MACHINE FORWARD TRAVEL

EXCEPTION: FOR ALL BACKHOE PARTS, "RIGHT-HAND" AND "LEFT-HAND" SIDES, "FRONT" AND "REAR" ARE DETERMINED WHEN SEATED FOR BACKHOE OPERATION.

## BOX-ENCLOSED ILLUSTRATIONS

A KEY NUMBER, SHOWN IN THE PARTS LIST, IS ASSIGNED TO A BOX ENCLOSING ALL PARTS SOLD AS A SERVICE ASSEMBLY.

## BOLT AND CAP SCREW STRENGTH IDENTIFICATION

BOLTS AND CAP SCREWS REQUIRED TO HAVE HIGH-STRENGTH QUALITIES EQUIVALENT TO SAE GRADE 8 ARE IDENTIFIED THROUGHOUT THIS CATALOG BY THE DESCRIPTION HS SAE 8. ALL STANDARD BOLTS AND CAP SCREWS ARE SAE GRADE 5 OR LOWER.

## COMPLETE GOODS LISTINGS

COMPLETE GOODS ARE LISTED IN BOLD FACE TYPE. ORDER SEPARATELY. DO NOT INCLUDE ON REPLACEMENT PARTS ORDER.

## SI UNITS OF MEASURE

METRIC DIMENSIONS ARE GIVEN, WHERE APPLICABLE, THROUGHOUT THIS PARTS CATALOG.

## CHANGE INDICATOR LINE

CHANGES AFFECTING THE ORDERING OF PARTS ARE IDENTIFIED BY VERTICAL LINES MARKED IN THE LEFT-HAND MARGIN OF REVISED PARTS LISTING IMAGES. A LINE IS ALSO AT THE LEFT-HAND EDGE OF THE SAME PART NUMBER IN THE NUMERICAL INDEX TO SHOW THE LOCATION OF REVISED INFORMATION.

# 1A8

410B BACKHOE LOADER

## COMPLETE COMPONENTS

THIS CATALOG LISTS COMPLETE COMPONENTS IN A SPECIAL SECTION. THE PURPOSE OF THIS SECTION IS TO AID DEALERS IN PLANNING WHAT COMPONENTS TO STOCK FOR THEIR COMPONENT EXCHANGE PROGRAM. WHILE MOST OF THE ITEMS ARE NORMALLY STOCKED AT THE JOHN DEERE PARTS DISTRIBUTION WAREHOUSE (PDW), SOME COMPONENTS ARE ONLY AVAILABLE FROM FACTORIES. IT IS ESSENTIAL TO PLAN AHEAD IN DEVELOPING A COMPONENT EXCHANGE PROGRAM BECAUSE SOME OF THE FACTORY-SUPPLIED COMPONENTS HAVE AN EXTENDED LEAD TIME.

IN ADDITION TO CURRENTLY AVAILABLE COMPONENTS, THIS SECTION ALSO CONTAINS NUMBERS FOR COMPONENTS WHICH HAVE BEEN SUBSTITUTED AND/OR ARE NO LONGER AVAILABLE. PARTS NO LONGER AVAILABLE ARE CODED AND ARE INCLUDED FOR REFERENCE ONLY.

FOR ADDITIONAL INFORMATION ON SPECIAL ORDERING PROCEDURES FOR THESE PARTS, PLEASE CONSULT YOUR PARTS ADMINISTRATION MANUAL OR CONTACT YOUR JOHN DEERE INDUSTRIAL REGION PRODUCT SUPPORT DEVELOPMENT MANAGER.

MEMORANDA

## ALPHABETICAL INDEX

GRID		PAGE	GRID		PAGE
<b>A</b>					
1H22	ACCELERATOR PEDAL .....	0515 - 2	3B16	BACKHOE BUCKET, REPLACEMENT .....	3302 - 4D
2F21	ACCESSORY RELAY .....	1830 - 4	3B18	BACKHOE BUCKET, REPLACEMENT .....	3302 - 4F
2F4	ADJUSTER, DELUXE SEAT .....	1821 - 2	3C2	BACKHOE CONTROL LEVERS .....	3315 - 3
2F10	ADJUSTER, ECONOMY HIGH BACK SEAT .....	1821 - 8	3D8	BACKHOE CONTROL VALVE .....	3360 - 1
1H24	AIR CLEANER .....	0520 - 1	3D16	BACKHOE CONTROL VALVE BOOM SECTION.....	3360 - 3G
1I1	AIR CLEANER .....	0520 - 3	3D12	BACKHOE CONTROL VALVE BUCKET SECTION.....	3360 - 3C
1H25	AIR CLEANER BRACKET .....	0520 - 2	2G22	BACKHOE CONTROL VALVE COVER .....	1913 - 6
1I2	AIR CLEANER BRACKET .....	0520 - 4	3D9	BACKHOE CONTROL VALVE CROWD SECTION .....	3360 - 2
1H24	AIR CLEANER ELEMENT .....	0520 - 1	3C4	BACKHOE CONTROL VALVE LINKAGE .....	3315 - 5
1I1	AIR CLEANER ELEMENT .....	0520 - 3	3C9	BACKHOE CONTROL VALVE LINKAGE, FOUR LEVER .....	3315 - 10
1H25	AIR CLEANER HOSE .....	0520 - 2	3D20	BACKHOE CONTROL VALVE SEAL KIT.....	3360 - 3K
1I2	AIR CLEANER HOSE .....	0520 - 4	3D25	BACKHOE CONTROL VALVE SUPPORT .....	3360 - 5
1I3	AIR CLEANER RESTRICTION INDICATOR.....	0520 - 5	3D18	BACKHOE CONTROL VALVE SWING SECTION .....	3360 - 3I
2G10	AIR CONDITIONER COMPRESSOR .....	1830 - 18	3G15	BACKHOE EXTENDIBLE DIPPERSTICK CONTROL VALVE O-RING KIT.....	3360 - 50
2G12	AIR CONDITIONER COMPRESSOR .....	1830 - 20	3G11	BACKHOE EXTENDIBLE DIPPERSTICK VALVE HYDRAULICS .....	3360 - 46
2G7	AIR CONDITIONER COMPRESSOR BELT .....	1830 - 14	3G17	BACKHOE VALVE HYDRAULICS.....	3360 - 52
2G9	AIR CONDITIONER COMPRESSOR HARDWARE KIT..	1830 - 16	3C7	BACKHOE VALVE LINKAGE, THREE LEVER.....	3315 - 8
2G7	AIR CONDITIONER CONDENSER .....	1830 - 14	3C19	BACKHOE, BOOM.....	3340 - 8
2G7	AIR CONDITIONER CONTROL .....	1830 - 14	2H6	BACKUP ALARM .....	2004 - 2
2G7	AIR CONDITIONER EVAPORATOR.....	1830 - 14	1H19	BAFFLES, RADIATOR.....	0510 - 2
2G7	AIR CONDITIONER EXPANSION VALVE .....	1830 - 14	1E17	BALANCER SHAFT BUSHING .....	0404 - 1
2G7	AIR CONDITIONER HOSES .....	1830 - 14	2D7	BARRIER, NOISE CONTROL, MAIN FRAME .....	1740 - 3
2F19	AIR CONDITIONING .....	1830 - 1	2D7	BARRIER, SOUND CONTROL, MAIN FRAME .....	1740 - 3
2G5	AIR FILTER, RECIRCULATION .....	1830 - 12	2F7	BASE, SEAT.....	1821 - 5
1G5	AIR INTAKE SYSTEM .....	0414 - 1	2F12	BASE, SEAT.....	1821 - 9A
1G6	AIR INTAKE SYSTEM .....	0414 - 2	2B4	BATTERY .....	1671 - 1
2H6	ALARM, BACKUP .....	2004 - 2	2B5	BATTERY .....	1671 - 2
2B9	ALTERNATOR .....	1672 - 1	2G23	BATTERY BOX .....	1913 - 7
2B10	ALTERNATOR .....	1672 - 2	2B8	BATTERY CABLE .....	1671 - 4
2B9	ALTERNATOR ATTACHING PART.....	1672 - 1	2B4	BATTERY CABLES .....	1671 - 1
2C12	ALTERNATOR LENS.....	1674 - 12	2G23	BATTERY COVER .....	1913 - 7
2C9	ALTERNATOR LES .....	1674 - 10	2B7	BATTERY HOLD DOWNS.....	1671 - 3
1H5	ALTERNATOR MOUNTING BRACKET .....	0423 - 2	2B5	BATTERY, HEAVY-DUTY .....	1671 - 2
2B9	ALTERNATOR PULLEY.....	1672 - 1	2B4	BATTERY, STANDARD INSTALLATION .....	1671 - 1
2B9	ALTERNATOR SHEAVE .....	1672 - 1	2B23	BEACON ROTATING.....	1673 - 10
2B12	ALTERNATOR, REPLACEMENT (65-AMP) .....	1672 - 4	2F6	BEARING, SEAT SWIVEL.....	1821 - 4
2D15	ANGLES, ROOF SUPPORT .....	1810 - 2	1E5	BEARINGS CRANKSHAFT.....	0401 - 1A
1B10	ARM, DIFFERENTIAL LOCK.....	0210 - 2	1E4	BEARINGS, MAIN .....	0401 - 1
1C4	ARM, STEERING (MFWD) .....	0250 - 16	1B11	BEARINGS, WHEEL, FRONT.....	0230 - 1
1G24	ARMATURE, STARTING MOTOR .....	0422 - 2	2G7	BELT, AIR CONDITIONER COMPRESSOR.....	1830 - 14
2F4	ARMRESTS, DELUXE SEAT .....	1821 - 2	2F3	BELT, SEAT .....	1821 - 1
2I18	ARMS, LOADER LIFT .....	3140 - 2	1H6	BELTS, FAN.....	0429 - 1
1E9	ARMS, ROCKER .....	0402 - 3	1H18	BLADE, FAN.....	0510 - 1
2B9	ATTACHING PARTS, ALTERNATOR .....	1672 - 1	1E17	BLOCK, CYLINDER .....	0404 - 1
3B18	ATTACHING PINS KIT .....	3302 - 4F	1E18	BLOCK, ENGINE, SHORT.....	0404 - 2
1F25	AUTOMATIC ADVANCE, FUEL INJECTION PUMP .....	0413 - 8	2G3	BLOWER SUPPORT .....	1830 - 10
3G24	AUXILIARY CONTROL VALVE, MANUAL .....	3360 - 58	2G5	BLOWER SUPPORT .....	1830 - 12
3H1	AUXILIARY CONTROL VALVE, MANUAL .....	3360 - 59A	2F24	BLOWER, HEATER .....	1830 - 7
3H3	AUXILIARY VALVE, SOLENOID.....	3360 - 60	2C11	BLOWER, HEATER RESISTOR .....	1674 - 11A
3H5	AUXILIARY VALVE, SOLENOID.....	3360 - 61A	3E15	BOOM CYLINDER .....	3360 - 18
1B19	AXLE (MFWD) .....	0250 - 6	3E17	BOOM CYLINDER BORE REPAIR KIT .....	3360 - 20
1B21	AXLE ASSEMBLY (MFWD).....	0250 - 8	3F23	BOOM CYLINDER HYDRAULICS.....	3360 - 36
1C2	AXLE HOUSING (MFWD) .....	0250 - 14	2K11	BOOM CYLINDER HYDRAULICS, LOADER .....	3160 - 12
1B19	AXLE HUB (MFWD).....	0250 - 6	3E15	BOOM CYLINDER PINS .....	3360 - 18
1C1	AXLE PIVOT (MFWD) .....	0250 - 13	3E18	BOOM CYLINDER ROD REPAIR KIT .....	3360 - 21
1C1	AXLE SUPPORT (MFWD).....	0250 - 13	2K4	BOOM CYLINDER, LOADER .....	3160 - 7
1B12	AXLE, FRONT .....	0230 - 2	2K6	BOOM LIFT CYLINDER BORE REPAIR KIT .....	3160 - 7B
1C6	AXLE, FRONT (MFWD).....	0250 - 18	2K5	BOOM LIFT CYLINDER ROD REPAIR KIT .....	3160 - 7A
<b>B</b>					
3B18	BACKHOE BUCKET CUTTING EDGE .....	3302 - 4F	3C15	BOOM LOCK .....	3340 - 4
3B18	BACKHOE BUCKET PINS.....	3302 - 4F	3D7	BOOM LOCK LEVER KIT .....	3340 - 17
3C14	BACKHOE BUCKET PINS.....	3340 - 3	2G22	BOOM LOCK LEVER LOCKING PLATE, CONSOLE .....	1913 - 6
<b>C</b>					
3B16	BACKHOE BUCKET, REPLACEMENT .....	3302 - 4D	3D20	BOOM SECTION SECTION SEAL KIT.....	3360 - 3K
3B18	BACKHOE BUCKET, REPLACEMENT .....	3302 - 4F	3D20	BOOM SECTION SPOOL SEAL KIT .....	3360 - 3K
3C2	BACKHOE CONTROL LEVERS .....	3315 - 3	3D16	BOOM SECTION, BACKHOE CONTROL VALVE .....	3360 - 3G
3D8	BACKHOE CONTROL VALVE .....	3360 - 1			
3D16	BACKHOE CONTROL VALVE BOOM SECTION.....	3360 - 3G			
3D12	BACKHOE CONTROL VALVE BUCKET SECTION.....	3360 - 3C			
2G22	BACKHOE CONTROL VALVE COVER .....	1913 - 6			
3D9	BACKHOE CONTROL VALVE CROWD SECTION .....	3360 - 2			
3C4	BACKHOE CONTROL VALVE LINKAGE .....	3315 - 5			
3C9	BACKHOE CONTROL VALVE LINKAGE, FOUR LEVER .....	3315 - 10			
3D20	BACKHOE CONTROL VALVE SEAL KIT.....	3360 - 3K			
3D25	BACKHOE CONTROL VALVE SUPPORT .....	3360 - 5			
3D18	BACKHOE CONTROL VALVE SWING SECTION .....	3360 - 3I			
3G15	BACKHOE EXTENDIBLE DIPPERSTICK CONTROL VALVE O-RING KIT.....	3360 - 50			
3G11	BACKHOE EXTENDIBLE DIPPERSTICK VALVE HYDRAULICS .....	3360 - 46			
3G17	BACKHOE VALVE HYDRAULICS.....	3360 - 52			
3C7	BACKHOE VALVE LINKAGE, THREE LEVER.....	3315 - 8			
3C19	BACKHOE, BOOM.....	3340 - 8			
2H6	BACKUP ALARM .....	2004 - 2			
1H19	BAFFLES, RADIATOR.....	0510 - 2			
1E17	BALANCER SHAFT BUSHING .....	0404 - 1			
2D7	BARRIER, NOISE CONTROL, MAIN FRAME .....	1740 - 3			
2D7	BARRIER, SOUND CONTROL, MAIN FRAME .....	1740 - 3			
2F7	BASE, SEAT.....	1821 - 5			
2F12	BASE, SEAT.....	1821 - 9A			
2B4	BATTERY .....	1671 - 1			
2B5	BATTERY .....	1671 - 2			
2G23	BATTERY BOX .....	1913 - 7			
2B8	BATTERY CABLE .....	1671 - 4			
2B4	BATTERY CABLES .....	1671 - 1			
2G23	BATTERY COVER .....	1913 - 7			
2B7	BATTERY HOLD DOWNS.....	1671 - 3			
2B5	BATTERY, HEAVY-DUTY .....	1671 - 2			
2B4	BATTERY, STANDARD INSTALLATION .....	1671 - 1			
2B23	BEACON ROTATING.....	1673 - 10			
2F6	BEARING, SEAT SWIVEL.....	1821 - 4			
1E5	BEARINGS CRANKSHAFT.....	0401 - 1A			
1E4	BEARINGS, MAIN .....	0401 - 1			
1B11	BEARINGS, WHEEL, FRONT.....	0230 - 1			
2G7	BELT, AIR CONDITIONER COMPRESSOR.....	1830 - 14			
2F3	BELT, SEAT .....	1821 - 1			
1H6	BELTS, FAN.....	0429 - 1			
1H18	BLADE, FAN.....	0510 - 1			
1E17	BLOCK, CYLINDER .....	0404 - 1			
1E18	BLOCK, ENGINE, SHORT.....	0404 - 2			
2G3	BLOWER SUPPORT .....	1830 - 10			
2G5	BLOWER SUPPORT .....	1830 - 12			
2F24	BLOWER, HEATER .....	1830 - 7			
2C11	BLOWER, HEATER RESISTOR .....	1674 - 11A			
3E15	BOOM CYLINDER .....	3360 - 18			
3E17	BOOM CYLINDER BORE REPAIR KIT .....	3360 - 20			
3F23	BOOM CYLINDER HYDRAULICS.....	3360 - 36			
2K11	BOOM CYLINDER HYDRAULICS, LOADER .....	3160 - 12			
3E15	BOOM CYLINDER PINS .....	3360 - 18			
3E18	BOOM CYLINDER ROD REPAIR KIT .....	3360 - 21			
2K4	BOOM CYLINDER, LOADER .....	3160 - 7			
2K6	BOOM LIFT CYLINDER BORE REPAIR KIT .....	3160 - 7B			
2K5	BOOM LIFT CYLINDER ROD REPAIR KIT .....	3160 - 7A			
3C15	BOOM LOCK .....	3340 - 4			
3D7	BOOM LOCK LEVER KIT .....	3340 - 17			
2G22	BOOM LOCK LEVER LOCKING PLATE, CONSOLE .....	1913 - 6			
3D20	BOOM SECTION SECTION SEAL KIT.....	3360 - 3K			
3D20	BOOM SECTION SPOOL SEAL KIT .....	3360 - 3K			
3D16	BOOM SECTION, BACKHOE CONTROL VALVE .....	3360 - 3G			

# 1A10

410B BACKHOE LOADER

## ALPHABETICAL INDEX - CONTINUED

GRID		PAGE	GRID		PAGE
2J5	BOOM SECTION, CONTROL VALVE.....	3160 - 4B	3B15	BUCKET, REPLACEMENT HEAVY DUTY (18 AND 24").....	3302 - 4B
1J14	BOOM SERVICE LOCK BAR .....	1313 - 1	3B21	BUCKET, REPLACEMENT HIGH CAPACITY (36") .....	3302 - 5A
3C19	BOOM, BACKHOE .....	3340 - 8	3B9	BUCKET, STANDARD (12" AND 16") .....	3302 - 2
2G22	BOOT, CONTROL VALVE COVER (TWO AND THREE LEVER).....	1913 - 6	3B11	BUCKET, STANDARD REPLACEMENT (12" AND 16") .....	3302 - 3A
3C9	BOOT, CONTROL VALVE COVER (FOUR LEVER) .....	3315 - 10	3B16	BUCKET, BACKHOE REPLACEMENT PINS .....	3302 - 4D
1C14	BOOT, SHIFT LEVER (ROUND).....	0315 - 1	3B18	BUCKET, BACKHOE, REPLACEMENT .....	3302 - 4F
2E9	BOOT, SHIFT LEVER (SQUARE).....	1810 - 16	3B13	BUCKETS, HEAVY-DUTY .....	3302 - 4
2E9	BOOT, SHIFTER TOWER .....	1810 - 16	3B14	BUCKETS, HEAVY-DUTY .....	3302 - 4A
2G5	BOOT, SPEED CONTROL ROD (AIR CONDITIONER) .....	1830 - 12	3B20	BUCKETS, HIGH CAPACITY .....	3302 - 5
2E15	BOOT, STABILIZER LEVER .....	1810 - 22	3B7	BUCKETS, REPLACEMENT STANDARD BACKHOE (18, 24, 30 AND 36 INCH) .....	3302 - 1A
1C7	BOOT, 4WD PEDAL .....	0260 - 2	3B6	BUCKETS, STANDARD - 18, 24, 30 AND 36" .....	3302 - 1
2G23	BOX, BATTERY .....	1913 - 7	2B18	BULB, REAR WARNING LAMP .....	1673 - 5
1H25	BRACKET, AIR CLEANER .....	0520 - 2	2B19	BULB, REAR WARNING LAMP .....	1673 - 6
1I2	BRACKET, AIR CLEANER .....	0520 - 4	2B20	BULB, STOP LAMP .....	1673 - 7
1H5	BRACKET, ALTERNATOR MOUNTING .....	0423 - 2	2B21	BULB, STOP LAMP .....	1673 - 8
2E10	BRACKET, CAB SUPPORT .....	1810 - 17	2B20	BULB, TAIL LAMP .....	1673 - 7
2H7	BRACKET, TOOL BOX .....	2005 - 1	2B21	BULB, TAIL LAMP .....	1673 - 8
1J10	BRAKE BAND .....	1115 - 1	2B18	BULB, TURN SIGNAL LAMP .....	1673 - 5
1J4	BRAKE DISK ASSEMBLY .....	1011 - 1	2B19	BULB, TURN SIGNAL LAMP .....	1673 - 6
1J10	BRAKE LINING .....	1115 - 1	2E13	BULKHEAD, FRONT .....	1810 - 20
1J10	BRAKE LINKAGE.....	1115 - 1	2E15	BULKHEAD, REAR .....	1810 - 22
1D12	BRAKE PACKS, FORWARD AND REVERSE .....	0350 - 4	2G5	BULKHEAD, SIDE CONSOLE FRONT (AIR CONDITIONER AND PRESSURIZER) .....	1830 - 12
1J7	BRAKE PEDAL.....	1060 - 4	2G5	BULKHEAD, SIDE CONSOLE REAR (AIR CONDITIONER AND PRESSURIZER) .....	1830 - 12
2C8	BRAKE SWITCH .....	1674 - 8	1E17	BUSHING, BALANCER SHAFT.....	0404 - 1
1J7	BRAKE VALVE.....	1060 - 4	1D15	BUSHING, REVERSER INPUT SHAFT .....	0360 - 2
1J5	BRAKE VALVE TO TRANSMISSION OIL LINES.....	1060 - 2	2I5	BYPASS VALVE, OIL COOLER .....	2160 - 19
1J11	BRAKE, PARKING .....	1115 - 2			
2C5	BRAKE, PARKING RELAY .....	1674 - 4	C		
2G1	BRUSH KIT, PRESSURIZER MOTOR .....	1830 - 8	2F23	CAB DELUXE HEATER.....	1830 - 6
3E19	BUCKET CYLINDER .....	3360 - 22	2D22	CAB DOOR .....	1810 - 8
3E23	BUCKET CYLINDER .....	3360 - 23C	2D5	CAB DOOR STOP.....	1740 - 1
3E21	BUCKET CYLINDER BORE REPAIR KIT .....	3360 - 23A	2D22	CAB DOOR STOP.....	1810 - 8
3E25	BUCKET CYLINDER BORE REPAIR KIT .....	3360 - 23E	2D19	CAB FRAME.....	1810 - 5
2K9	BUCKET CYLINDER BORE REPLACEMENT REPAIR KIT .....	3160 - 9B	2G1	CAB FRESH AIR FILTER .....	1830 - 8
3G3	BUCKET CYLINDER HYDRAULIC TUBE REPLACEMENT KIT .....	3360 - 39A	2D20	CAB HEADLINER.....	1810 - 6
2K10	BUCKET CYLINDER HYDRAULICS .....	3160 - 11	2G8	CAB HEATER, STANDARD .....	1830 - 15
3G1	BUCKET CYLINDER HYDRAULICS .....	3360 - 38	2G1	CAB PRESSURIZER .....	1830 - 8
3E19	BUCKET CYLINDER PINS .....	3360 - 22	2E17	CAB REAR KICK PANEL .....	1810 - 24
3E23	BUCKET CYLINDER REPAIR KIT .....	3360 - 23C	2E18	CAB REAR KICK PANEL .....	1810 - 24A
3E22	BUCKET CYLINDER ROD REPAIR KIT.....	3360 - 23B	2D20	CAB ROOF MOUNTING HARDWARE .....	1810 - 6
3F1	BUCKET CYLINDER ROD REPAIR KIT.....	3360 - 23F	2D20	CAB ROOF WEATHERSTRIP.....	1810 - 6
2K8	BUCKET CYLINDER ROD REPLACEMENT REPAIR KIT .....	3160 - 9A	2E10	CAB SUPPORT BRACKET .....	1810 - 17
2K7	BUCKET CYLINDER, LOADER.....	3160 - 9	2C6	CAB WIRING HARNESS.....	1674 - 6
3G5	BUCKET HYDRAULICS, EXTENDIBLE DIPPERSTICK .....	3360 - 40	2B8	CABLE, BATTERY .....	1671 - 4
2I14	BUCKET LEVELING LINKAGE, LOADER .....	3115 - 4	2B4	CABLES, BATTERY .....	1671 - 1
3C14	BUCKET LINKS, BACKHOE .....	3340 - 3	1E7	CAMSHAFT .....	0402 - 2
2I20	BUCKET LOADER LINKAGE .....	3140 - 4	1E8	CAMSHAFT .....	0402 - 2A
3C14	BUCKET PINS, BACKHOE .....	3340 - 3	1E7	CAMSHAFT GEAR.....	0402 - 2
2I10	BUCKET PINS, LOADER (ALLIED BUCKETS) .....	3102 - 4	1E8	CAMSHAFT GEAR.....	0402 - 2A
3D20	BUCKET SECTION SECTION SEAL KIT .....	3360 - 3K	1I9	CAP, FILLER TANK .....	0560 - 2
3D20	BUCKET SECTION SPOOL SEAL KIT.....	3360 - 3K	1B11	CAP, HUB, FRONT WHEEL .....	0230 - 1
3D12	BUCKET SECTION, BACKHOE CONTROL VALVE .....	3360 - 3C	1H19	CAP, RADIATOR .....	0510 - 2
2J7	BUCKET SECTION, CONTROL VALVE .....	3160 - 4D	1E17	CAPS, MAIN BEARING .....	0404 - 1
2J9	BUCKET SECTION, CONTROL VALVE .....	3160 - 4F	1D11	CARRIER, PLANET PINION .....	0350 - 3
3D14	BUCKET SECTION, REPLACEMENT BACKHOE CONTROL VALVE .....	3360 - 3E	1B19	CARRIER, PLANET PINION (MFWD).....	0250 - 6
2I8	BUCKET TEETH .....	3102 - 2	1B17	CARRIER, PLANETARY PINION .....	0250 - 3
3B24	BUCKET TOOTH TIPS .....	3302 - 8	1B18	CARRIER, PLANETARY PINION (MFWD) .....	0250 - 4
3B16	BUCKET, BACKHOE, REPLACEMENT .....	3302 - 4D	1D5	CASE, REVERSER .....	0341 - 4
3B22	BUCKET, EJECTOR .....	3302 - 6	1C21	CASE, TRANSMISSION .....	0341 - 1
2I8	BUCKET, LOADER .....	3102 - 2	2D15	CAUTION LABEL .....	1810 - 2

# 1A11

410B BACKHOE LOADER

## ALPHABETICAL INDEX - CONTINUED

GRID		PAGE	GRID		PAGE
1G9	CENTER HOUSING, TURBOCHARGER .....	0416 - 3	2G7	CONTROL, AIR CONDITIONER .....	1830 - 14
2H12	CHARGE PUMP .....	2160 - 4	2F21	CONTROL, HEATER VALVE .....	1830 - 4
2H14	CHARGE PUMP OVERHAUL KIT .....	2160 - 6	1H22	CONTROLS, ENGINE SPEED .....	0515 - 2
2G5	CIRCUIT BREAKER, PRESSURIZER .....	1830 - 12	1I13	CONVERTER, TORQUE .....	0641 - 1
2G3	CIRCUIT BREAKER, PRESSURIZER .....	1830 - 10	1J21	COOLANT CONDITIONER .....	1369 - 4
1H24	CLEANER, AIR .....	0520 - 1	1G13	COOLER, ENGINE OIL .....	0419 - 2
1I1	CLEANER, AIR .....	0520 - 3	2I3	COOLER, TRANSMISSION OIL .....	2160 - 18
1D19	CLUTCH ARM .....	0360 - 6	1J25	COOLSCAN PLUS TEST KIT, FLUID ANALYSIS PRODUCTS .....	1369 - 8
1C17	CLUTCH PEDAL AND LINKAGE .....	0315 - 4	2D8	COUNTERWEIGHT .....	1749 - 1
1D1	CLUTCH PLATE (MFWD) .....	0341 - 3C	2D6	COUNTERWEIGHT FRAME .....	1740 - 2
2G12	CLUTCH, COMPRESSOR .....	1830 - 20	2D9	COUNTERWEIGHT, SIDE .....	1749 - 2
2G12	COIL, COMPRESSOR .....	1830 - 20	2G22	COVER, BACKHOE CONTROL VALVE .....	1913 - 6
1G25	COIL, STARTING MOTOR .....	0422 - 3	2G23	COVER, BATTERY .....	1913 - 7
1H15	COLD WEATHER STARTING AID .....	0505 - 3	2G17	COVER, COWL .....	1913 - 1
1H16	COLD WEATHER STARTING AID .....	0505 - 4	2E10	COVER, COWL OPENING .....	1810 - 17
1H1	COMMUTATOR END FRAME, STARTING MOTOR .....	0422 - 4	1I6	COVER, EXHAUST .....	0530 - 1
2G12	COMPRESSOR COIL .....	1830 - 20	1I7	COVER, EXHAUST .....	0530 - 2
2G9	COMPRESSOR HARDWARE KIT .....	1830 - 16	2G17	COVER, FUEL CAP .....	1913 - 1
2G10	COMPRESSOR HEAD .....	1830 - 18	2E13	COVER, FUSE BOX .....	1810 - 20
2G10	COMPRESSOR PARTS .....	1830 - 18	1F23	COVER, GOVERNOR HOUSING .....	0413 - 6
2G10	COMPRESSOR SEAL KIT .....	1830 - 18	2H1	COVER, LEFT-HAND FENDER .....	1927 - 1
2G12	COMPRESSOR, AIR CONDITIONER .....	1830 - 20	2G18	COVER, LOADER VALVE .....	1913 - 2
2G12	COMPRESSOR, CLUTCH PULLEY .....	1830 - 20	2E13	COVER, LOADER VALVE COVER .....	1810 - 20
2G7	CONDENSER, AIR CONDITIONER .....	1830 - 14	3D21	COVER, RELIEF VALVE (LEFT) .....	3360 - 3M
2F19	CONDITIONING, AIR .....	1830 - 1	3D23	COVER, REPLACEMENT RELIEF VALVE .....	3360 - 3O
1E13	CONNECTING ROD .....	0403 - 1	2C1	COVER, RETURN-TO-DIG SWITCH .....	1674 - 2
2G22	CONSOLE BOOM LOCK LOCKING PLATE .....	1913 - 6	2C3	COVER, RETURN-TO-DIG SWITCH .....	1674 - 3A
2G5	CONSOLE SIDE PANEL (AIR CONDITIONER) .....	1830 - 12	2G20	COVER, RIGHT HAND COWL .....	1913 - 4
2E13	CONSOLE SUPPORT .....	1810 - 20	1E10	COVER, ROCKER ARM .....	0402 - 4
2E13	CONSOLE, FRONT .....	1810 - 20	1E11	COVER, ROCKER ARM .....	0402 - 5
2C9	CONSOLE, HARNESS .....	1674 - 10	2G3	COVER, STABILIZER TUBE (STANDARD HEATER) .....	1830 - 10
2C12	CONSOLE, HARNESS .....	1674 - 12	2G5	COVER, STABILIZER TUBE (AIR CONDITIONER) .....	1830 - 12
2E15	CONSOLE, REAR .....	1810 - 22	1H3	COVER, STARTER MOTOR SOLENOID .....	0422 - 6
2G5	CONSOLE, SIDE (DELUXE HEATER, AIR CONDITIONER AND PRESSURIZER) .....	1830 - 12	1E12	COVER, TIMING GEAR .....	0402 - 6
2G3	CONSOLE, SIDE (STANDARD HEATER WITH PRESSURIZER) .....	1830 - 10	1C22	COVER, TRANSMISSION FRONT .....	0341 - 2
3C2	CONTROL LEVERS, BACKHOE .....	3315 - 3	1D7	COVER, TRANSMISSION TOP .....	0341 - 6
1C15	CONTROL ROD, REVERSER .....	0315 - 2	2G17	COWL COVER .....	1913 - 1
2G22	CONTROL VALVE COVER BOOT (TWO AND THREE LEVER) .....	1913 - 6	2G21	COWL COVER, LEFT-HAND .....	1913 - 5
3C9	CONTROL VALVE COVER BOOT (FOUR LEVER) .....	3315 - 10	2E10	COWL OPENING COVER .....	1810 - 17
2I16	CONTROL VALVE LINKAGE, THIRD FUNCTION .....	3115 - 8	2G21	COWL SUPPORT, LEFT-HAND .....	1913 - 5
3D25	CONTROL VALVE SUPPORT, BACKHOE .....	3360 - 5	1E4	CRANKSHAFT .....	0401 - 1
3D8	CONTROL VALVE, BACKHOE .....	3360 - 1	1E5	CRANKSHAFT BEARINGS .....	0401 - 1A
3D16	CONTROL VALVE, BACKHOE BOOM SECTION .....	3360 - 3G	1E4	CRANKSHAFT IDLER GEARS .....	0401 - 1
3D12	CONTROL VALVE, BACKHOE BUCKET SECTION .....	3360 - 3C	1H6	CRANKSHAFT PULLEY .....	0429 - 1
3D9	CONTROL VALVE, BACKHOE CROWD SECTION .....	3360 - 2	3E11	CROWD CYLINDER .....	3360 - 14
3D20	CONTROL VALVE, BACKHOE SEAL KIT .....	3360 - 3K	3E13	CROWD CYLINDER BORE REPAIR KIT .....	3360 - 15A
3D18	CONTROL VALVE, BACKHOE SWING SECTION .....	3360 - 3I	3F19	CROWD CYLINDER HYDRAULICS .....	3360 - 34
2J5	CONTROL VALVE, BOOM SECTION .....	3160 - 4B	3F21	CROWD CYLINDER HYDRAULICS .....	3360 - 35A
2J7	CONTROL VALVE, BUCKET SECTION .....	3160 - 4D	3E11	CROWD CYLINDER PINS .....	3360 - 14
2J9	CONTROL VALVE, BUCKET SECTION .....	3160 - 4F	3E14	CROWD CYLINDER ROD REPAIR KIT .....	3360 - 15B
1C7	CONTROL VALVE, DIFFERENTIAL LOCK (MFWD) .....	0260 - 2	3D20	CROWD SECTION SECTION SEAL KIT .....	3360 - 3K
1C10	CONTROL VALVE, DIFFERENTIAL LOCK LINES (MFWD) .....	0260 - 5	3D20	CROWD SECTION SPOOL SEAL KIT .....	3360 - 3K
3G13	CONTROL VALVE, EXTENDIBLE DIPPERSTICK .....	3360 - 48	3D9	CROWD SECTION, BACKHOE CONTROL VALVE .....	3360 - 2
2I22	CONTROL VALVE, LOADER .....	3160 - 1	2F10	CUSHION, ECONOMY HIGH BACK SEAT .....	1821 - 8
2I25	CONTROL VALVE, LOADER .....	3160 - 2	2F4	CUSHIONS, DELUXE SEAT .....	1821 - 2
2J4	CONTROL VALVE, LOADER .....	3160 - 4	3B18	CUTTING EDGE, BACKHOE BUCKET .....	3302 - 4F
2J13	CONTROL VALVE, LOADER .....	3160 - 5	1E17	CYLINDER BLOCK .....	0404 - 1
2J14	CONTROL VALVE, LOADER .....	3160 - 5A	1F8	CYLINDER HEAD .....	0409 - 2
2J16	CONTROL VALVE, LOADER .....	3160 - 5C	1F10	CYLINDER HEAD .....	0409 - 4
2J11	CONTROL VALVE, LOADER, REPAIR KIT .....	3160 - 4H	1F8	CYLINDER HEAD GASKET .....	0409 - 2
3D14	CONTROL VALVE, REPLACEMENT BACKHOE BUCKET SECTION .....	3360 - 3E	1F10	CYLINDER HEAD GASKET .....	0409 - 4
1D19	CONTROL VALVE, REVERSER .....	0360 - 6	1H8	CYLINDER HEAD REMOVAL GASKET KIT .....	0452 - 1
			2K11	CYLINDER HYDRAULICS, LOADER BOOM .....	3160 - 12
			1E13	CYLINDER LINER .....	0403 - 1
			1J21	CYLINDER LINER PACKING LUBRICANT .....	1369 - 4
			3E15	CYLINDER, BOOM .....	3360 - 18

# 1A12

410B BACKHOE LOADER

## ALPHABETICAL INDEX - CONTINUED

GRID		PAGE	GRID		PAGE
3E19	CYLINDER, BUCKET .....	3360 - 22	1D5	DIPSTICK, TRANSMISSION .....	0341 - 4
3E23	CYLINDER, BUCKET .....	3360 - 23C	2C5	DIRECTIONAL SWITCH .....	1674 - 4
3G1	CYLINDER, BUCKET, HYDRAULICS .....	3360 - 38	1J4	DISK, BRAKE .....	1011 - 1
3G3	CYLINDER, BUCKET, TUBE REPLACEMENT KIT .....	3360 - 39A	2C6	DOVE LIGHT .....	1674 - 6
3E11	CYLINDER, CROWD .....	3360 - 14	2E25	DOVE LIGHT .....	1810 - 31
3F2	CYLINDER, EXTENDIBLE DIPPERSTICK .....	3360 - 25	2D22	DOOR HINGE .....	1810 - 8
3F4	CYLINDER, EXTENDIBLE DIPPERSTICK .....	3360 - 26A	2D24	DOOR JAM.....	1810 - 10
3F5	CYLINDER, EXTENDIBLE DIPPERSTICK REPAIR KIT .....	3360 - 26B	2D22	DOOR LATCH .....	1810 - 8
1I19	CYLINDER, HYDROSTATIC STEERING (MFWD).....	0960 - 3	2D24	DOOR SEALS .....	1810 - 10
2K4	CYLINDER, LOADER BOOM .....	3160 - 7	2D22	DOOR STOP, CAB .....	1810 - 8
2K7	CYLINDER, LOADER BUCKET.....	3160 - 9	2D22	DOOR WINDOW .....	1810 - 8
1I25	CYLINDER, POWER STEERING, WITHOUT MFWD ...	0960 - 8	2D22	DOOR, CAB .....	1810 - 8
2E3	CYLINDER, REAR WINDOW .....	1810 - 14	2I1	DRAIN LINE, OIL FILTER .....	2160 - 16
2E5	CYLINDER, REAR WINDOW .....	1810 - 15A	2I1	DRAIN LINE, PRIORITY VALVE.....	2160 - 16
3E1	CYLINDER, STABILIZER.....	3360 - 6	2G5	DRIP PAN.....	1830 - 12
3E3	CYLINDER, STABILIZER.....	3360 - 8	1F24	DRIVE GROUP, FUEL INJECTION PUMP.....	0413 - 7
3F11	CYLINDER, STABILIZER HYDRAULICS .....	3360 - 29A	1G24	DRIVE HOUSING, STARTING MOTOR .....	0422 - 2
3F9	CYLINDER, STABILIZER, HYDRAULICS .....	3360 - 28	1D1	DRIVE SHAFT (MFWD).....	0341 - 3C
3F13	CYLINDER, STABILIZER, HYDRAULICS .....	3360 - 30	1D9	DRIVE SHAFT ASSEMBLY, TRANSMISSION .....	0350 - 1
3F15	CYLINDER, STABILIZER, HYDRAULICS .....	3360 - 31A	1D10	DRIVE SHAFT, DIFFERENTIAL .....	0350 - 2
3E4	CYLINDER, STABILIZER, REPLACEMENT .....	3360 - 8A	2H19	DRIVE SHAFT, HYDRAULIC PUMP.....	2160 - 10
3E5	CYLINDER, STABILIZER, REPLACEMENT .....	3360 - 8B	1C20	DRIVE SHAFT, TRANSMISSION .....	0325 - 1
3E6	CYLINDER, SWING .....	3360 - 9	1B2	DRIVE WHEEL.....	0110 - 1A
3E7	CYLINDER, SWING (REPLACEMENT) .....	3360 - 10	1B25	DRIVESHAFT YOKE (MFWD).....	0250 - 12
3E8	CYLINDER, SWING (REPLACEMENT) .....	3360 - 11	1D1	DRUM (MFWD) .....	0341 - 3C
3F17	CYLINDER, SWING HYDRAULICS.....	3360 - 32			
<b>D</b>					
2C5	DASH HARNESS .....	1674 - 4	2F10	ECONOMY HIGH BACK, SEAT .....	1821 - 8
2D3	DASH, FRONT .....	1676 - 4	3B22	EJECTOR BUCKET .....	3302 - 6
1J15	DECAL .....	1320 - 1	3B22	EJECTOR BUCKET LINKAGE .....	3302 - 6
1J16	DECAL .....	1320 - 2	1F12	ELBOW, EXHAUST .....	0410 - 1
1J17	DECALS AND LABELS, FRENCH .....	1320 - 3	1H24	ELEMENT, AIR CLEANER .....	0520 - 1
1J17	DECALS AND LABELS, SPANISH .....	1320 - 3	1I1	ELEMENT, AIR CLEANER .....	0520 - 3
2F2	DEFROSTER FAN .....	1810 - 33	1G15	ELEMENT, FUEL FILTER .....	0420 - 2
2F1	DEFROSTER, FAN FRONT .....	1810 - 32	1G16	ELEMENT, FUEL FILTER .....	0420 - 3
2F23	DELUXE CAB HEATER.....	1830 - 6	3D9	END PLATE, BACKHOE CONTROL VALVE .....	3360 - 2
2F4	DELUXE SEAT WITH ADJUSTER .....	1821 - 2	3D18	END PLATE, BACKHOE CONTROL VALVE .....	3360 - 3I
1K1	DIESELSCAN TEST KIT, FLUID ANALYSIS PRODUCTS .....	1369 - 9	1B14	END, TIE ROD.....	0230 - 4
1B9	DIFFERENTIAL ASSEMBLY .....	0210 - 1	1G7	ENGINE BALANCER SHAFT .....	0415 - 1
1D10	DIFFERENTIAL DRIVE SHAFT ASSEMBLY .....	0350 - 2	1E20	ENGINE BASIC OVERHAUL KIT .....	0404 - 4
1B9	DIFFERENTIAL HOUSING .....	0210 - 1	1H13	ENGINE COOLANT HEATER .....	0505 - 1
1B23	DIFFERENTIAL LOCK (MFWD) .....	0250 - 10	1F7	ENGINE COOLANT TEMPERATURE SENDER .....	0409 - 1
1B10	DIFFERENTIAL LOCK ARM .....	0210 - 2	2C18	ENGINE COOLANT TEMPERATURE SENDER .....	1674 - 18
1C7	DIFFERENTIAL LOCK CONTROL VALVE (MFWD) .....	0260 - 2	2C20	ENGINE COOLANT TEMPERATURE SENDER .....	1674 - 20
1C10	DIFFERENTIAL LOCK CONTROL VALVE LINES (MFWD) .....	0260 - 5	1H14	ENGINE COOLANT, HEATER .....	0505 - 2
1B23	DIFFERENTIAL LOCK HOUSING (MFWD) .....	0250 - 10	1E25	ENGINE DIPSTICK .....	0407 - 2
1B10	DIFFERENTIAL LOCK PEDAL .....	0210 - 2	1H7	ENGINE FLYWHEEL .....	0433 - 1
1B23	DIFFERENTIAL LOCK PINION (MFWD) .....	0250 - 10	1H7	ENGINE FLYWHEEL HOUSING .....	0433 - 1
1C11	DIFFERENTIAL LOCK VALVE ASSEMBLY (MFWD) .....	0260 - 6	1E22	ENGINE FRONT PLATE .....	0404 - 6
1B21	DIFFERENTIAL SPIRAL BEVEL GEAR (MFWD).....	0250 - 8	1I8	ENGINE MOUNT .....	0540 - 2
3C21	DIPPERSTICK .....	3340 - 10	1J18	ENGINE OIL .....	1369 - 1
3C23	DIPPERSTICK .....	3340 - 11A	1E25	ENGINE OIL BYPASS VALVE .....	0407 - 2
3F4	DIPPERSTICK CYLINDER, EXTENDIBLE .....	3360 - 26A	1G13	ENGINE OIL COOLER .....	0419 - 2
3F5	DIPPERSTICK CYLINDER, EXTENDIBLE, REPAIR KIT .....	3360 - 26B	1F1	ENGINE OIL FILLER INLET .....	0407 - 3
3D1	DIPPERSTICK HOUSING, EXTENDIBLE .....	3340 - 12	1E25	ENGINE OIL FILTER .....	0407 - 2
3D3	DIPPERSTICK, EXTENDIBLE EXTENSION .....	3340 - 14	1E23	ENGINE OIL PAN .....	0407 - 1A
3G12	DIPPERSTICK, EXTENDIBLE, VALVE .....	3360 - 47	2C9	ENGINE OIL PRESSURE LENS.....	1674 - 10
3D6	DIPPERSTICK, EXTENSION.....	3340 - 16	2C12	ENGINE OIL PRESSURE LENS.....	1674 - 12
1D3	DIPSTICK, (MFWD) .....	0341 - 3E	2B24	ENGINE OIL PRESSURE SWITCH .....	1674 - 1
1E25	DIPSTICK, ENGINE .....	0407 - 2	2C18	ENGINE OIL PRESSURE SWITCH .....	1674 - 18
			2C20	ENGINE OIL PRESSURE SWITCH .....	1674 - 20
			1F2	ENGINE OIL PUMP .....	0407 - 4
			1F3	ENGINE OIL PUMP .....	0407 - 5
			1F4	ENGINE OIL PUMP .....	0407 - 6
			1H9	ENGINE OVERHAUL GASKET SET.....	0452 - 2
<b>E</b>					

# 1A13

410B BACKHOE LOADER

## ALPHABETICAL INDEX - CONTINUED

GRID		PAGE	GRID		PAGE
1H10	ENGINE OVERHAUL GASKET SET.....	0452 - 3	1G16	FILTER, FUEL .....	0420 - 3
1E13	ENGINE PISTON .....	0403 - 1	2H17	FILTER, HYDRAULIC OIL .....	2160 - 8
1F1	ENGINE PRESSURE REGULATING VALVE .....	0407 - 3	1D17	FILTER, OIL, REVERSER .....	0360 - 4
1E18	ENGINE SHORT BLOCK.....	0404 - 2	1D14	FILTER, TRANSMISSION CASE.....	0360 - 1
1H22	ENGINE SPEED CONTROLS.....	0515 - 2	1K2	FILTERS, MACHINE .....	1399 - 1
2C9	ENGINE TEMPERATURE GAUGE .....	1674 - 10	1J22	FITTINGS, O-RING FLAT FACE SEAL .....	1369 - 5
2C12	ENGINE TEMPERATURE GAUGE .....	1674 - 12	1J22	FLAT FACE O-RING SEAL FITTINGS .....	1369 - 5
1G12	ENGINE THERMOSTAT .....	0418 - 2	2E11	FLOOR MAT.....	1810 - 18
1G12	ENGINE THERMOSTAT HOUSING .....	0418 - 2	3G18	FLOW CONTROL EXTENDIBLE DIPPERSTICK .....	3360 - 54
1J21	ENGINE VALVE STEM LUBRICANT .....	1369 - 4	3G20	FLOW CONTROL OPTION EXTENDIBLE DIPPERSTICK .....	3360 - 55A
1F5	ENGINE VENTILATOR TUBE .....	0408 - 1	1J25	FLUID ANALYSIS PRODUCTS (COOLSCAN PLUS TEST KIT).....	1369 - 8
1F6	ENGINE VENTILATOR TUBE .....	0408 - 2	1K1	FLUID ANALYSIS PRODUCTS (DIESELSCAN TEST KIT).....	1369 - 9
2C18	ENGINE WIRING HARNESS.....	1674 - 18	1J23	FLUID ANALYSIS PRODUCTS OILSCAN PLUS TEST KIT) .....	1369 - 6
2C20	ENGINE WIRING HARNESS.....	1674 - 20	1H15	FLUID, STARTING FLUID .....	0505 - 3
2G7	EVAPORATOR, AIR CONDITIONER .....	1830 - 14	1H7	FLYWHEEL HOUSING, ENGINE .....	0433 - 1
1I6	EXHAUST COVER.....	0530 - 1	1H7	FLYWHEEL, ENGINE .....	0433 - 1
1I7	EXHAUST COVER.....	0530 - 2	3C13	FOOT, REVERSIBLE STABILIZER, WITH CATCH .....	3340 - 2A
1F12	EXHAUST ELBOW.....	0410 - 1	1D12	FORWARD AND REVERSE BRAKE PACKS.....	0350 - 4
1I6	EXHAUST EXTENSION.....	0530 - 1	3C9	FOUR LEVER BACKHOE CONTROL VALVE LINKAGE.....	3315 - 10
1I7	EXHAUST EXTENSION.....	0530 - 2	2D19	FRAME, CAB .....	1810 - 5
1F12	EXHAUST MANIFOLD.....	0410 - 1	2D6	FRAME, COUNTERWEIGHT.....	1740 - 2
1F13	EXHAUST MANIFOLD.....	0410 - 2	2D5	FRAME, MAIN .....	1740 - 1
1F8	EXHAUST VALVE .....	0409 - 2	3C17	FRAME, SWING.....	3340 - 6
1F10	EXHAUST VALVE .....	0409 - 4	1J17	FRENCH DECALS AND LABELS .....	1320 - 3
2G7	EXPANSION VALVE, AIR CONDITIONER.....	1830 - 14	1B12	FRONT AXLE .....	0230 - 2
3G5	EXTENDIBLE DIPPERSTICK BUCKET HYDRAULICS .....	3360 - 40	1C2	FRONT AXLE (MFWD) .....	0250 - 14
3G13	EXTENDIBLE DIPPERSTICK CONTROL VALVE .....	3360 - 48	1C6	FRONT AXLE (MFWD) .....	0250 - 18
3C5	EXTENDIBLE DIPPERSTICK CONTROL VALVE LINKAGE .....	3315 - 6	1C2	FRONT AXLE SHAFT (MFWD).....	0250 - 14
3F2	EXTENDIBLE DIPPERSTICK CYLINDER.....	3360 - 25	2E13	FRONT BULKHEAD.....	1810 - 20
3F4	EXTENDIBLE DIPPERSTICK CYLINDER.....	3360 - 26A	2E13	FRONT CONSOLE.....	1810 - 20
3F5	EXTENDIBLE DIPPERSTICK CYLINDER REPAIR KIT .....	3360 - 26B	2G20	FRONT CONSOLE SUPPORT .....	1913 - 4
3D3	EXTENDIBLE DIPPERSTICK EXTENSION .....	3340 - 14	2D3	FRONT DASH .....	1676 - 4
3G7	EXTENDIBLE DIPPERSTICK EXTENSION CYLINDER HYDRAULICS.....	3360 - 42	2F1	FRONT DEFROSTER FAN .....	1810 - 32
3D1	EXTENDIBLE DIPPERSTICK HOUSING .....	3340 - 12	1E22	FRONT PLATE, ENGINE.....	0404 - 6
3F3	EXTENDIBLE DIPPERSTICK REPAIR KIT .....	3360 - 26	2B22	FRONT TRACTOR LAMP .....	1673 - 9
3G12	EXTENDIBLE DIPPERSTICK VALVE .....	3360 - 47	2B15	FRONT TRACTOR LAMPS .....	1673 - 2
3G18	EXTENDIBLE DIPPERSTICK, FLOW CONTROL .....	3360 - 54	2B17	FRONT WARNING LAMP .....	1673 - 4
3G20	EXTENDIBLE DIPPERSTICK, FLOW CONTROL OPTION .....	3360 - 55A	1B3	FRONT WHEEL .....	0120 - 2
3D6	EXTENSION DIPPERSTICK .....	3340 - 16	1C2	FRONT WHEEL AXLE.....	0250 - 14
3D3	EXTENSION EXTENDIBLE DIPPERSTICK .....	3340 - 14	1B11	FRONT WHEEL BEARINGS .....	0230 - 1
1I6	EXTENSION, EXHAUST .....	0530 - 1	1B11	FRONT WHEEL HUB .....	0230 - 1
1I7	EXTENSION, EXHAUST .....	0530 - 2	2G17	FUEL CAP COVER .....	1913 - 1
			1G15	FUEL FILTER.....	0420 - 2
			1G16	FUEL FILTER.....	0420 - 3
			1G15	FUEL FILTER ELEMENT.....	0420 - 2
			1G16	FUEL FILTER ELEMENT.....	0420 - 3
			1G16	FUEL FILTER TO INJECTION PUMP LINE .....	0420 - 3
			2C9	FUEL GAUGE .....	1674 - 10
			2C12	FUEL GAUGE .....	1674 - 12
			1I9	FUEL GAUGE SENDER .....	0560 - 2
			1F15	FUEL INJECTION LINES.....	0413 - 2
			1F17	FUEL INJECTION LINES.....	0413 - 3A
			1F14	FUEL INJECTION NOZZLE.....	0413 - 1
			1F15	FUEL INJECTION PUMP.....	0413 - 2
			1F17	FUEL INJECTION PUMP.....	0413 - 3A
			1F25	FUEL INJECTION PUMP AUTOMATIC ADVANCE .....	0413 - 8
			1F24	FUEL INJECTION PUMP DRIVE GROUP .....	0413 - 7
			1G3	FUEL INJECTION PUMP ELECTRIC SHUT-OFF KIT .....	0413 - 11
			1F22	FUEL INJECTION PUMP GOVERNOR GROUP .....	0413 - 5
			1G1	FUEL INJECTION PUMP HEAD AND ROTOR GROUP .....	0413 - 9
			1F23	FUEL INJECTION PUMP HOUSING .....	0413 - 6
			1F21	FUEL INJECTION PUMP LINKAGE GROUP.....	0413 - 4

### F

1H6	FAN BELTS .....	0429 - 1
1H18	FAN BLADE .....	0510 - 1
2G24	FAN BLAST SHIELD .....	1913 - 8
1H21	FAN SHROUD, RADIATOR.....	0510 - 4
2F2	FAN, DEFROSTER .....	1810 - 33
2F1	FAN, FRONT DEFROSTER .....	1810 - 32
2G1	FAN, PRESSURIZER.....	1830 - 8
3C11	FEET, STABILIZER .....	3340 - 1
2H1	FENDER COVER, LEFT-HAND .....	1927 - 1
2F20	FENDER PLUGS .....	1830 - 2
2D19	FENDER SEAL.....	1810 - 5
2H1	FENDER, LEFT-HAND.....	1927 - 1
2H2	FENDER, RIGHT-HAND .....	1927 - 2
1I9	FILLER TANK CAP .....	0560 - 2
2G1	FILTER, CAB FRESH AIR.....	1830 - 8
1E25	FILTER, ENGINE OIL .....	0407 - 2
1G15	FILTER, FUEL .....	0420 - 2



# 1A14

410B BACKHOE LOADER

## ALPHABETICAL INDEX - CONTINUED

GRID		PAGE	GRID		PAGE
1G4	FUEL INJECTION PUMP OVERHAUL GASKET KIT	0413 - 12	1H14	HEATER, ENGINE COOLANT	0505 - 2
1F19	FUEL INJECTION PUMP REPLACEMENT PARTS	0413 - 3C	2F21	HEATER, STANDARD	1830 - 4
1G2	FUEL INJECTION PUMP TRANSFER GROUP	0413 - 10	2B8	HEAVY DUTY BATTERY HOLD DOWNS	1671 - 4
1F15	FUEL INJECTION SYSTEM	0413 - 2	2B5	HEAVY-DUTY BATTERY INSTALLATION	1671 - 2
1F17	FUEL INJECTION SYSTEM	0413 - 3A	3B13	HEAVY-DUTY BUCKETS	3302 - 4
1G20	FUEL PUMP KIT, REPLACEMENT	0421 - 3	3B14	HEAVY-DUTY BUCKETS	3302 - 4A
1I9	FUEL TANK	0560 - 2	2F10	HIGH BACK SEAT, ECONOMY	1821 - 8
1I9	FUEL TANK HOSES	0560 - 2	3B20	HIGH CAPACITY BUCKETS	3302 - 5
1I11	FUEL TANK SUPPORT	0560 - 4	2E7	HINGE KIT	1810 - 15C
1G18	FUEL TRANSFER PUMP	0421 - 1	2D22	HINGE, DOOR	1810 - 8
1G19	FUEL TRANSFER PUMP, REPLACEMENT	0421 - 2	2E1	HINGE, SIDE WINDOW	1810 - 12
2E13	FUSE BOX COVER	1810 - 20	2B7	HOLD DOWNS, BATTERY	1671 - 3
			2B8	HOLD DOWNS, HEAVY DUTY BATTERY	1671 - 4
			2G14	HOOD	1910 - 1
			2G14	HOOD, DOOR	1910 - 1
			2H5	HORN	2004 - 1
			2C5	HORN SWITCH	1674 - 4
			1H25	HOSE, AIR CLEANER	0520 - 2
			1I2	HOSE, AIR CLEANER	0520 - 4
			1D25	HOSE, HYDRAULIC PUMP DRAIN PORT	0360 - 12
			2G7	HOSES, AIR CONDITIONER	1830 - 14
			1I9	HOSES, FUEL TANK	0560 - 2
			1H19	HOSES, RADIATOR	0510 - 2
			2C9	HOURLY METER	1674 - 10
			2C12	HOURLY METER	1674 - 12
			1B21	HOUSING (MFWD)	0250 - 8
			1B9	HOUSING, DIFFERENTIAL	0210 - 1
			1B23	HOUSING, DIFFERENTIAL LOCK (MFWD)	0250 - 10
			1F23	HOUSING, FUEL INJECTION PUMP	0413 - 6
			2G25	HOUSING, GRILLE	1921 - 1
			2G5	HOUSING, INSTRUMENT (PRESSURIZER)	1830 - 12
			2E15	HOUSING, INSTRUMENT PANEL	1810 - 22
			2G1	HOUSING, PRESSURIZER	1830 - 8
			1B6	HOUSING, REAR AXLE	0201 - 1
			1B7	HOUSING, REAR AXLE	0201 - 1A
			1C4	HOUSING, STEERING ARM (MFWD)	0250 - 16
			1B11	HUB CAP, FRONT WHEEL	0230 - 1
			1B19	HUB, AXLE (MFWD)	0250 - 6
			1B11	HUB, FRONT WHEEL	0230 - 1
			3H9	HYDRAULIC HOSE PROTECTIVE SLEEVE	3360 - 64
			2H17	HYDRAULIC OIL FILTER	2160 - 8
			2J22	HYDRAULIC OIL LINES, THIRD FUNCTION VALVE	3160 - 5I
			2H10	HYDRAULIC PUMP	2160 - 2
			2H9	HYDRAULIC PUMP ASSEMBLY, REPLACEMENT	2160 - 1
			1D25	HYDRAULIC PUMP DRAIN PORT HOSE	0360 - 12
			2H19	HYDRAULIC PUMP DRIVE SHAFT	2160 - 10
			2H14	HYDRAULIC PUMP OVERHAUL KIT	2160 - 6
			2H16	HYDRAULIC PUMP SOLENOID VALVE	2160 - 7A
			2H12	HYDRAULIC PUMP STROKE CONTROL VALVE	2160 - 4
			2H25	HYDRAULIC PUMP TO OIL FILTER OIL LINES	2160 - 15
			2H20	HYDRAULIC PUMP TO PRIORITY VALVE OIL LINES	2160 - 11
			2H21	HYDRAULIC PUMP TO PRIORITY VALVE OIL LINES	2160 - 11A
			3G17	HYDRAULICS, BACKHOE	3360 - 52
			3G11	HYDRAULICS, BACKHOE EXTENDIBLE DIPPERSTICK VALVE	3360 - 46
			3F23	HYDRAULICS, BOOM CYLINDER	3360 - 36
			2K10	HYDRAULICS, BUCKET CYLINDER	3160 - 11
			3G1	HYDRAULICS, BUCKET CYLINDER	3360 - 38
			3F19	HYDRAULICS, CROWD CYLINDER	3360 - 34
			3F21	HYDRAULICS, CROWD CYLINDER	3360 - 35A
			3G5	HYDRAULICS, EXTENDIBLE DIPPERSTICK BUCKET	3360 - 40
			3G7	HYDRAULICS, EXTENDIBLE DIPPERSTICK EXTENSION CYLINDER	3360 - 42

### G

### H

# 1A15

410B BACKHOE LOADER

## ALPHABETICAL INDEX - CONTINUED

GRID		PAGE	GRID		PAGE
2K11	HYDRAULICS, LOADER BOOM CYLINDER .....	3160 - 12	3G15	KIT, BACHKOE EXTENDIBLE DIPPERSTICK	
2K11	HYDRAULICS, LOADER CONTROL VALVE .....	3160 - 12		CONTROL VALVE O-RING .....	3360 - 50
2K10	HYDRAULICS, LOADER CONTROL VALVE TO		1E20	KIT, BASIC ENGINE OVERHAUL.....	0404 - 4
	BUCKET CYLINDER .....	3160 - 11	3E17	KIT, BOOM CYLINDER BORE REPAIR .....	3360 - 20
2K13	HYDRAULICS, LOADER CONTROL VALVE TO		3E18	KIT, BOOM CYLINDER ROD REPAIR .....	3360 - 21
	PRIORITY VALVE .....	3160 - 15	2K6	KIT, BOOM LIFT CYLINDER BORE REPAIR .....	3160 - 7B
2K15	HYDRAULICS, LOADER CONTROL VALVE TO		2K5	KIT, BOOM LIFT CYLINDER ROD REPAIR .....	3160 - 7A
	PRIORITY VALVE (CESSNA).....	3160 - 17	3D7	KIT, BOOM LOCK LEVER.....	3340 - 17
2K16	HYDRAULICS, LOADER CONTROL VALVE TO		2G1	KIT, BRUSH, PRESSURIZER MOTOR.....	1830 - 8
	PRIORITY VALVE (CESSNA).....	3160 - 18	3E21	KIT, BUCKET CYLINDER BORE REPAIR .....	3360 - 23A
2K14	HYDRAULICS, LOADER CONTROL VALVE TO		3E25	KIT, BUCKET CYLINDER BORE REPAIR .....	3360 - 23E
	PRIORITY VALVE (GRESNA) .....	3160 - 16	3E23	KIT, BUCKET CYLINDER REPAIR.....	3360 - 23C
2K13	HYDRAULICS, LOADER CONTROL VALVE TO OIL		3E22	KIT, BUCKET CYLINDER ROD REPAIR .....	3360 - 23B
	FILTER .....	3160 - 15	3F1	KIT, BUCKET CYLINDER ROD REPAIR .....	3360 - 23F
2K15	HYDRAULICS, LOADER CONTROL VALVE TO OIL		3G3	KIT, BUCKET CYLINDER TUBE REPLACEMENT .....	3360 - 39A
	FILTER (CESSNA) .....	3160 - 17	2H14	KIT, CHARGE PUMP OVERHAUL .....	2160 - 6
2K16	HYDRAULICS, LOADER CONTROL VALVE TO OIL		2G9	KIT, COMPRESSOR HARDWARE .....	1830 - 16
	FILTER (CESSNA) .....	3160 - 18	2G10	KIT, COMPRESSOR SEAL .....	1830 - 18
2K14	HYDRAULICS, LOADER CONTROL VALVE TO OIL		3E13	KIT, CROWD CYLINDER BORE REPAIR .....	3360 - 15A
	FILTER (GRESNA) .....	3160 - 16	3E14	KIT, CROWD CYLINDER ROD REPAIR .....	3360 - 15B
3F9	HYDRAULICS, STABILIZER CYLINDER .....	3360 - 28	3F3	KIT, EXTENDIBLE DIPPERSTICK CYLINDER	
3F11	HYDRAULICS, STABILIZER CYLINDER .....	3360 - 29A		REPAIR .....	3360 - 26
3F13	HYDRAULICS, STABILIZER CYLINDER .....	3360 - 30	1G3	KIT, FUEL INJECTION PUMP ELECTRIC	
3F15	HYDRAULICS, STABILIZER CYLINDER .....	3360 - 31A		SHUT-OFF .....	0413 - 11
3F17	HYDRAULICS, SWING CYLINDER.....	3360 - 32	2E7	KIT, HINGE.....	1810 - 15C
1119	HYDROSTATIC STEERING CYLINDER (MFWD) .....	0960 - 3	2H14	KIT, HYDRAULIC PUMP OVERHAUL .....	2160 - 6
1I20	HYDROSTATIC STEERING CYLINDER (MFWD) .....	0960 - 3A	2C23	KIT, LEAD WIRE .....	1674 - 24
			2K4	KIT, LOADER BOOM CYLINDER .....	3160 - 7
			1J19	KIT, O-RING.....	1369 - 2
			1J22	KIT, O-RINGS, FLAT FACE SEAL .....	1369 - 5
			1J21	KIT, OFF-SEASON STORAGE .....	1369 - 4
			1E14	KIT, PISTON LINER.....	0403 - 2
			1E15	KIT, PISTON LINER.....	0403 - 3
			1E16	KIT, PISTON LINER.....	0403 - 4
			1E13	KIT, PISTON RING .....	0403 - 1
			1E13	KIT, PISTON-LINER.....	0403 - 1
			1J1	KIT, POWER STEERING CYLINDER REPAIR	
				(BORE), WITHOUT MFWD .....	0960 - 9
			1J2	KIT, POWER STEERING CYLINDER ROD REPAIR,	
				WITHOUT MFWD .....	0960 - 10
			1118	KIT, POWER STEERING VALVE .....	0960 - 2
			3F5	KIT, REPAIR, EXTENDIBLE DIPPERSTICK	
				CYLINDER .....	3360 - 26B
			3H8	KIT, REPAIR, VALVE, SOLENOID .....	3360 - 63
			2K9	KIT, REPLACEMENT BUCKET CYLINDER BORE	
				REPAIR .....	3160 - 9B
			2K8	KIT, REPLACEMENT BUCKET CYLINDER ROD	
				REPAIR .....	3160 - 9A
			3D20	KIT, SEAL, BACKHOE CONTROL VALVE.....	3360 - 3K
			3D11	KIT, SEAL, RELIEF VALVE.....	3360 - 3B
			3D15	KIT, SEAL, RELIEF VALVE.....	3360 - 3F
			3D20	KIT, SECTION SEAL, BOOM SECTION.....	3360 - 3K
			3D20	KIT, SECTION SEAL, BUCKET SECTION .....	3360 - 3K
			3D20	KIT, SECTION SEAL, CROWD SECTION .....	3360 - 3K
			3D20	KIT, SECTION SEAL, SWING SECTION .....	3360 - 3K
			3D20	KIT, SPOOL SEAL, BOOM SECTION .....	3360 - 3K
			3D20	KIT, SPOOL SEAL, BUCKET SECTION.....	3360 - 3K
			3D20	KIT, SPOOL SEAL, CROWD SECTION .....	3360 - 3K
			3D20	KIT, SPOOL SEAL, SWING SECTION .....	3360 - 3K
			3E3	KIT, STABILIZER BORE REPAIR.....	3360 - 8
			3E1	KIT, STABILIZER CYLINDER REPAIR .....	3360 - 6
			3E3	KIT, STABILIZER CYLINDER REPAIR .....	3360 - 8
			1G22	KIT, STARTER SOLENOID COVER .....	0422 - 1A
			1G23	KIT, STARTER SOLENOID COVER .....	0422 - 1B
			3D5	KIT, STEEL BEARING STRIP.....	3340 - 15A
			2H12	KIT, STROKE CONTROL VALVE SHUT-OFF .....	2160 - 4
			1E6	KIT, UNDERSIZE CRANKSHAFT .....	0401 - 2

### I

1E4	IDLER GEARS, CRANKSHAFT.....	0401 - 1
2C9	IGNITION SWITCH .....	1674 - 10
2C12	IGNITION SWITCH .....	1674 - 12
1I3	INDICATOR, AIR CLEANER RESTRICTION .....	0520 - 5
2G1	INLET SCREEN, PRESSURIZER .....	1830 - 8
1F1	INLET, ENGINE OIL FILLER.....	0407 - 3
1D15	INPUT SHAFT BUSHING, REVERSER .....	0360 - 2
1C22	INPUT SHAFT, TRANSMISSION .....	0341 - 2
2G5	INSTRUMENT HOUSING (PRESSURIZER).....	1830 - 12
2E15	INSTRUMENT PANEL HOUSING.....	1810 - 22
2C25	INSTRUMENT PANEL LABEL.....	1676 - 1
2D2	INSTRUMENT PANEL SIDE .....	1676 - 3
2D1	INSTRUMENT PANEL SIDE (STANDARD HEATER) ....	1676 - 2
2D1	INSTRUMENT PANEL SIDE LABEL.....	1676 - 2
2D2	INSTRUMENT PANEL SIDE LABEL.....	1676 - 3
2E19	INSTRUMENT PANEL VANDAL COVER .....	1810 - 25
2C25	INSTRUMENT PANEL, SIDE .....	1676 - 1
1G5	INTAKE SYSTEM, AIR .....	0414 - 1
1G6	INTAKE SYSTEM, AIR .....	0414 - 2
1F8	INTAKE VALVE .....	0409 - 2
1F10	INTAKE VALVE .....	0409 - 4
2E5	ISOLATOR PADS, CAB.....	1810 - 15A

### J

2D24	JAM, DOOR .....	1810 - 10
------	-----------------	-----------

### K

2D14	KICK PANEL, REAR .....	1810 - 1
2E17	KICK PANEL, REAR CAB .....	1810 - 24
2E18	KICK PANEL, REAR CAB .....	1810 - 24A
1B12	KINGPIN .....	0230 - 2
3B18	KIT, ATTACHING PINS .....	3302 - 4F

# 1A16

410B BACKHOE LOADER

## ALPHABETICAL INDEX - CONTINUED

GRID		PAGE	GRID		PAGE
1B12	KNUCKLE AND SPINDLE ASSEMBLY .....	0230 - 2	1F15	LINES, FUEL INJECTION .....	0413 - 2
	L		1F17	LINES, FUEL INJECTION .....	0413 - 3A
1J15	LABEL.....	1320 - 1	2H25	LINES, PUMP TO FILTER OIL .....	2160 - 15
1J16	LABEL.....	1320 - 2	1I21	LINES, STEERING OIL .....	0960 - 4
2D15	LABEL, CAUTION .....	1810 - 2	1I23	LINES, STEERING VALVE TO CYLINDER OIL.....	0960 - 6
2C25	LABEL, INSTRUMENT PANEL .....	1676 - 1	1J10	LINING, BRAKE .....	1115 - 1
2D1	LABEL, INSTRUMENT PANEL SIDE .....	1676 - 2	1F21	LINKAGE GROUP, FUEL INJECTION PUMP .....	0413 - 4
2D2	LABEL, INSTRUMENT PANEL SIDE .....	1676 - 3	3C4	LINKAGE, BACKHOE CONTROL VALVE .....	3315 - 5
2D15	LABEL, OSHA ROPS.....	1810 - 2	1J10	LINKAGE, BRAKE .....	1115 - 1
2D19	LABEL, ROPS .....	1810 - 5	2I20	LINKAGE, BUCKET, LOADER .....	3140 - 4
1J17	LABELS AND DECALS, FRENCH .....	1320 - 3	1C17	LINKAGE, CLUTCH PEDAL .....	0315 - 4
1J17	LABELS AND DECALS, SPANISH .....	1320 - 3	3C5	LINKAGE, CONTROL VALVE EXTENDIBLE DIPPERSTICK .....	3315 - 6
2B22	LAMP, FRONT TRACTOR.....	1673 - 9	3B22	LINKAGE, EJECTOR BUCKET .....	3302 - 6
2B17	LAMP, FRONT WARNING.....	1673 - 4	3C9	LINKAGE, FOUR LEVER BACKHOE CONTROL VALVE .....	3315 - 10
2B14	LAMP, REAR TRACTOR.....	1673 - 1	2I14	LINKAGE, LOADER BUCKET LEVEING .....	3115 - 4
2B18	LAMP, REAR WARNING.....	1673 - 5	2I12	LINKAGE, LOADER CONTROL VALVE .....	3115 - 2
2B19	LAMP, REAR WARNING.....	1673 - 6	1C15	LINKAGE, REVERSER CONTROL .....	0315 - 2
2B20	LAMP, STOP .....	1673 - 7	3B25	LINKAGE, STABILIZER VALVE .....	3315 - 1
2B20	LAMP, TAIL .....	1673 - 7	2I16	LINKAGE, THIRD FUNCTION CONTROL VALVE.....	3115 - 8
2B21	LAMP, TAIL .....	1673 - 8	3C7	LINKAGE, THREE LEVER BACKHOE VALVE.....	3315 - 8
2B18	LAMP, TURN SIGNAL .....	1673 - 5	3C14	LINKS, BACKHOE BUCKET .....	3340 - 3
2B19	LAMP, TURN SIGNAL .....	1673 - 6	2K4	LOADER BOOM CYLINDER .....	3160 - 7
2B15	LAMPS, TRACTOR FRONT AND REAR .....	1673 - 2	2K4	LOADER BOOM CYLINDER KIT .....	3160 - 7
2D22	LATCH, DOOR.....	1810 - 8	2I8	LOADER BUCKET .....	3102 - 2
2G18	LATCH, LOADER VALVE COVER .....	1913 - 2	2K7	LOADER BUCKET CYLINDER .....	3160 - 9
2E3	LATCH, REAR WINDOW.....	1810 - 14	2I10	LOADER BUCKET PINS (ALLIED BUCKETS).....	3102 - 4
2E5	LATCH, REAR WINDOW.....	1810 - 15A	2I20	LOADER BUCKET, LINKAGE .....	3140 - 4
2G16	LATCH, SIDE SHIELD.....	1910 - 3	2I22	LOADER CONTROL VALVE .....	3160 - 1
2C23	LEAD WIRE KIT.....	1674 - 24	2I23	LOADER CONTROL VALVE .....	3160 - 1A
2G15	LEFT SIDE ENGINE SHIELD .....	1910 - 2	2I25	LOADER CONTROL VALVE .....	3160 - 2
2G21	LEFT-HAND COWL COVER .....	1913 - 5	2J2	LOADER CONTROL VALVE .....	3160 - 2C
2G21	LEFT-HAND COWL SUPPORT.....	1913 - 5	2J4	LOADER CONTROL VALVE .....	3160 - 4
2H1	LEFT-HAND FENDER .....	1927 - 1	2J13	LOADER CONTROL VALVE .....	3160 - 5
2E22	LEFT-HAND WINDSHIELD WIPER AND MOTOR.....	1810 - 28	2J11	LOADER CONTROL VALVE REPAIR KIT .....	3160 - 4H
2C9	LENS, ALTERNATOR .....	1674 - 10	2J3	LOADER CONTROL VALVE SUPPORT .....	3160 - 3
2C12	LENS, ALTERNATOR .....	1674 - 12	2K3	LOADER CONTROL VALVE SUPPORT .....	3160 - 6
2C9	LENS, ENGINE OIL PRESSURE .....	1674 - 10	2K10	LOADER CONTROL VALVE TO BUCKET CYLINDER HYDRAULICS .....	3160 - 11
2C12	LENS, ENGINE OIL PRESSURE .....	1674 - 12	2J7	LOADER CONTROL VALVE WITH RETURN-TO-DIG. BUCKET SECTION .....	3160 - 4D
2C5	LENS, PARKING BRAKE WARNING .....	1674 - 4	2J9	LOADER CONTROL VALVE WITH RETURN-TO-DIG. BUCKET SECTION .....	3160 - 4F
2C5	LENS, TURN INDICATOR.....	1674 - 4	2J14	LOADER CONTROL VALVE WITHOUT RETURN-TO-DIG.....	3160 - 5A
2I14	LEVELING LINKAGE, LOADER BUCKET .....	3115 - 4	2J16	LOADER CONTROL VALVE WITHOUT RETURN-TO-DIG.....	3160 - 5C
2E13	LEVER COVER, LOADER VALVE .....	1810 - 20	2C1	LOADER HARNESS, RETURN-TO-DIG .....	1674 - 2
2F7	LEVER, SEAT HEIGHT ADJUSTER.....	1821 - 5	2C3	LOADER HARNESS, RETURN-TO-DIG .....	1674 - 3A
1H22	LEVER, SPEED CONTROL.....	0515 - 2	2I18	LOADER LIFT ARMS.....	3140 - 2
2F6	LEVER, SWIVEL, SEAT .....	1821 - 4	2G18	LOADER VALVE COVER .....	1913 - 2
1C14	LEVER, TRANSMISSION SHIFTER .....	0315 - 1	2G18	LOADER VALVE COVER LATCH.....	1913 - 2
3C2	LEVERS, BACKHOE CONTROL.....	3315 - 3	2E13	LOADER VALVE LEVER COVER.....	1810 - 20
2B16	LIGHT SWITCH .....	1673 - 3	2J14	LOADER, CONTROL VALVE .....	3160 - 5A
2C9	LIGHT SWITCH .....	1674 - 10	2J16	LOADER, CONTROL VALVE .....	3160 - 5C
2C12	LIGHT SWITCH .....	1674 - 12	3C15	LOCK, BOOM.....	3340 - 4
2C14	LIGHT SWITCH .....	1674 - 14	3D7	LOCK, BOOM LEVER KIT.....	3340 - 17
2C16	LIGHT SWITCH .....	1674 - 16	1C7	LOCK, DIFFERENTIAL, CONTROL VALVE (MFWD) ....	0260 - 2
2C6	LIGHT, DOME .....	1674 - 6	2G22	LOCKING PLATE, BOOM LOCK, CONSOLE .....	1913 - 6
2E25	LIGHT, DOME .....	1810 - 31	2G3	LOUVERS, AIR .....	1830 - 10
2B16	LIGHTS.....	1673 - 3	2G5	LOUVERS, AIR .....	1830 - 12
1G16	LINE, FUEL FILTER TO INJECTION PUMP .....	0420 - 3	1B8	LOWER PLATE AND BARS, REAR AXLE.....	0201 - 2
2I1	LINE, OIL FILTER DRAIN .....	2160 - 16	1J21	LUBRICANT, CYLINDER LINER PACKING .....	1369 - 4
1I19	LINE, OIL, STEERING CYLINDER (MFWD) .....	0960 - 3	1J21	LUBRICANT, ENGINE VALVE STEM.....	1369 - 4
2I1	LINE, PRIORITY VALVE DRAIN.....	2160 - 16			
1D25	LINE, PUMP TO TRANSMISSION OIL.....	0360 - 12			
1E13	LINER, CYLINDER.....	0403 - 1			
1J5	LINES, BRAKE VALVE TO TRANSMISSION OIL .....	1060 - 2			
1C10	LINES, DIFFERENTIAL LOCK CONTROL VALVE (MFWD) .....	0260 - 5			

# 1A17

410B BACKHOE LOADER

## ALPHABETICAL INDEX - CONTINUED

GRID	M	PAGE	GRID	N	PAGE
1K2	MACHINE FILTERS .....	1399 - 1	1D19	NEUTRAL START SWITCH .....	0360 - 6
1E17	MAIN BEARING CAPS .....	0404 - 1	2D7	NOISE CONTROL BARRIER, MAIN FRAME .....	1740 - 3
1E4	MAIN BEARINGS .....	0401 - 1	2E5	NOISE REDUCTION PADS, CAB .....	1810 - 15A
2D5	MAIN FRAME .....	1740 - 1	1F14	NOZZLE, FUEL INJECTION .....	0413 - 1
2D7	MAIN FRAME NOISE CONTROL BARRIER .....	1740 - 3			
2D7	MAIN FRAME SOUND CONTROL BARRIER .....	1740 - 3		O	
1B8	MAIN FRAME TIE BARS .....	0201 - 2	1J19	O-RING KIT .....	1369 - 2
1G25	MAIN FRAME, STARTING MOTOR .....	0422 - 3	3G15	O-RING KIT, BACKHOE EXTENDIBLE DIPPERSTICK CONTROL VALVE .....	3360 - 50
1D15	MANIFOLD AND OIL PUMP, REVERSER .....	0360 - 2	1J22	O-RING, FLAT FACE SEAL FITTINGS .....	1369 - 5
1F12	MANIFOLD, EXHAUST .....	0410 - 1	1J22	O-RINGS, FLAT FACE SEAL KIT .....	1369 - 5
1F13	MANIFOLD, EXHAUST .....	0410 - 2	2I5	OIL COOLER BYPASS VALVE .....	2160 - 19
3G24	MANUAL AUXILIARY CONTROL VALVE .....	3360 - 58	2I3	OIL COOLER TO HYDRAULIC PUMP OIL LINES .....	2160 - 18
3H1	MANUAL AUXILIARY CONTROL VALVE .....	3360 - 59A	2I2	OIL COOLER TO REVERSER HOUSING OIL LINES .....	2160 - 17
3G22	MANUAL AUXILIARY VALVE DETENT .....	3360 - 56	2I3	OIL COOLER TO TRANSMISSION OIL LINES .....	2160 - 18
2E11	MAT, FLOOR .....	1810 - 18	1G13	OIL COOLER, ENGINE .....	0419 - 2
1C2	MECHANICAL AXLE, FRONT (MFWD) .....	0250 - 14	2I3	OIL COOLER, TRANSMISSION .....	2160 - 18
1I20	MECHANICAL FRONT WHEEL DRIVE STEERING CYLINDER .....	0960 - 3A	2I1	OIL FILTER DRAIN LINE .....	2160 - 16
1B21	MFWD AXLE ASSEMBLY .....	0250 - 8	1E25	OIL FILTER, ENGINE .....	0407 - 2
1C1	MFWD AXLE PIVOT .....	0250 - 13	2H17	OIL FILTER, HYDRAULIC .....	2160 - 8
1C1	MFWD AXLE SUPPORT .....	0250 - 13	1D17	OIL FILTER, REVERSER .....	0360 - 4
1D1	MFWD CLUTCH PLATE .....	0341 - 3C	1D25	OIL LINE, PUMP TO TRANSMISSION .....	0360 - 12
1C7	MFWD CONTROL VALVE, DIFFERENTIAL LOCK .....	0260 - 2	1I21	OIL LINE, STEERING .....	0960 - 4
1C10	MFWD CONTROL VALVE, DIFFERENTIAL LOCK LINES .....	0260 - 5	1I19	OIL LINE, STEERING CYLINDER (MFWD) .....	0960 - 3
1B23	MFWD DIFFERENTIAL LOCK .....	0250 - 10	2I3	OIL LINES OIL COOLER TO TRANSMISSION .....	2160 - 18
1C7	MFWD DIFFERENTIAL LOCK CONTROL VALVE .....	0260 - 2	1J5	OIL LINES, BRAKE VALVE TO TRANSMISSION .....	1060 - 2
1C10	MFWD DIFFERENTIAL LOCK CONTROL VALVE LINES .....	0260 - 5	2H24	OIL LINES, HYDRAULIC PUMP TO TRANSMISSION .....	2160 - 14
1D3	MFWD DIPSTICK .....	0341 - 3E	2H25	OIL LINES, HYDRAULIC PUMP TO FILTER .....	2160 - 15
1D1	MFWD DRIVE SHAFT .....	0341 - 3C	2I2	OIL LINES, OIL COOLER TO REVERSER HOUSING .....	2160 - 17
1B25	MFWD DRIVESHAFT YOKE .....	0250 - 12	2H20	OIL LINES, PUMP TO PRIORITY VALVE .....	2160 - 11
1D1	MFWD DRUM .....	0341 - 3C	2H21	OIL LINES, PUMP TO PRIORITY VALVE .....	2160 - 11A
1C10	MFWD LINES, DIFFERENTIAL LOCK CONTROL VALVE .....	0260 - 5	1I23	OIL LINES, STEERING VALVE TO CYLINDER .....	0960 - 6
1C7	MFWD LOCK, DIFFERENTIAL, CONTROL VALVE .....	0260 - 2	1D23	OIL LINES, TRANSMISSION .....	0360 - 10
1C7	MFWD PEDAL BOOT .....	0260 - 2	1G10	OIL LINES, TURBOCHARGER .....	0416 - 4
1D1	MFWD PISTON .....	0341 - 3C	1E23	OIL PAN, ENGINE .....	0407 - 1A
1B19	MFWD PLANET PINION CARRIER .....	0250 - 6	1D15	OIL PUMP AND MANIFOLD, REVERSER .....	0360 - 2
1B18	MFWD PLANETARY PINION CARRIER .....	0250 - 4	1F2	OIL PUMP, ENGINE .....	0407 - 4
1B16	MFWD REAR AXLE SHAFT .....	0250 - 2	1F3	OIL PUMP, ENGINE .....	0407 - 5
1C24	MFWD TRANSFER CASE .....	0341 - 3A	1J18	OIL, ENGINE .....	1369 - 1
1D3	MFWD TRANSFER CASE ATTACHING HARDWARE .....	0341 - 3E	1J23	OILSCAN PLUS TEST KIT, FLUID ANALYSIS .....	1369 - 6
1C24	MFWD TRANSFER CASE BEARINGS .....	0341 - 3A	2C8	OPERATOR STATION HARNESS .....	1674 - 8
1D3	MFWD TRANSFER CASE GASKET .....	0341 - 3E	1E17	ORIFICE, PISTON COOLING .....	0404 - 1
1C24	MFWD TRANSFER CASE GEARS .....	0341 - 3A	2D15	OSHA ROPS LABEL .....	1810 - 2
1C24	MFWD TRANSFER CASE SHAFTS .....	0341 - 3A	1D11	OUTPUT SHAFT .....	0350 - 3
1B25	MFWD UNIVERSAL DRIVESHAFT .....	0250 - 12	2H14	OVERHAUL KIT, CHARGE PUMP .....	2160 - 6
1C24	MFWD WIRING LEAD .....	0341 - 3A	2H14	OVERHAUL KIT, HYDRAULIC PUMP .....	2160 - 6
2H4	MIRROR, REAR VIEW .....	2002 - 1			
2E22	MOTOR, LEFT WINDSHIELD WIPER .....	1810 - 28		P	
2G1	MOTOR, PRESSURIZER .....	1830 - 8	1D12	PACKS, BRAKE, FORWARD AND REVERSE .....	0350 - 4
2E24	MOTOR, REAR WINDSHIELD WIPER AND .....	1810 - 30	2E5	PADS CAB ISOLATOR .....	1810 - 15A
2E20	MOTOR, RIGHT WINDSHIELD WIPER .....	1810 - 26	3C12	PADS, STREET .....	3340 - 2
1G21	MOTOR, STARTING .....	0422 - 1	2G5	PAN, DRIP .....	1830 - 12
1G24	MOTOR, STARTING .....	0422 - 2	1E23	PAN, ENGINE OIL .....	0407 - 1A
1G25	MOTOR, STARTING .....	0422 - 3	2D2	PANEL, INSTRUMENT SIDE .....	1676 - 3
1H1	MOTOR, STARTING .....	0422 - 4	2D1	PANEL, INSTRUMENT SIDE (STANDARD HEATER) .....	1676 - 2
1I8	MOUNT, ENGINE .....	0540 - 2	2C25	PANEL, INSTRUMENT, SIDE .....	1676 - 1
2E9	MOUNT, PLATFORM .....	1810 - 16	2D2	PANEL, LABEL, INSTRUMENT SIDE .....	1676 - 3
1D8	MOUNT, REVERSER RESILIENT .....	0342 - 1	2D1	PANEL, LABEL, INSTRUMENT SIDE (STANDARD HEATER) .....	1676 - 2
2C11	MOUNTING, RESISTOR, HEATER BLOWER .....	1674 - 11A			
1I6	MUFFLER .....	0530 - 1			
1I7	MUFFLER .....	0530 - 2			