

SERVICE REPAIR

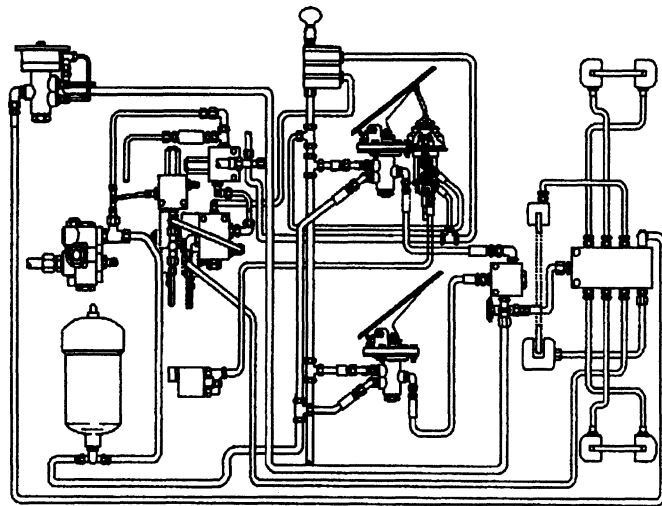
MANUAL

Hyster C117 (H800C, H880C, H970C, H1050CH)
Forklift

HYSTER

DIAGRAMS

H36.00-48.00C
H800-1050C



HYSTER

SAFETY PRECAUTIONS

MAINTENANCE AND REPAIR

- When lifting parts or assemblies, make sure that all slings, chains or cables are correctly fastened and that the load being lifted is balanced. Make sure that the crane, cables and chains have the capacity to support the weight of the load.
- Do not lift heavy parts by hand. Use a lifting mechanism.
- Wear safety glasses.
- **DISCONNECT THE BATTERY CONNECTOR** before doing any maintenance or repair on electric lift trucks. Disconnect the battery ground cable on internal combustion lift trucks.
- Always use correct blocks to prevent the unit from rolling or falling. See “How To Put The Lift Truck On Blocks” in the **OPERATING MANUAL** or the **PERIODIC MAINTENANCE** section.
- Keep the unit and working area clean and in order.
- Use the correct tools for the job.
- Keep the tools clean and in good condition.
- Always use **HYSTER APPROVED** parts when making repairs. Replacement parts must meet or exceed the specifications of the original equipment manufacturer.
- Make sure that all nuts, bolts, snap rings and other fastening devices are removed before using force to remove parts.
- Always fasten a **DO NOT OPERATE** sign to the controls of the unit when making repairs or if the unit needs repairs.
- Make sure you follow the **DANGER, WARNING** and **CAUTION** notes in the instructions.
- Gasoline, Liquid Petroleum Gas (LPG), and Diesel are flammable fuels. Make sure that you follow the necessary safety precautions when handling these fuels and when working on these fuel systems.
- Batteries generate flammable gas when they are being charged. Keep fire and sparks away from the area. Make sure the area has ventilation.

CONTENTS

FIGURE 1. WIRING DIAGRAM – EARLY UNITS (1 of 2)	2
FIGURE 2. WIRING DIAGRAM – EARLY UNITS (2 of 2)	4
FIGURE 3. WIRING DIAGRAM – INTERMEDIATE UNITS (1 of 2)	6
FIGURE 4. WIRING DIAGRAM – INTERMEDIATE UNITS (2 of 2)	8
FIGURE 5. WIRING DIAGRAM – LATE UNITS (1 of 2)	10
FIGURE 6. WIRING DIAGRAM – LATE UNITS (2 of 2)	12
FIGURE 7. STEERING SYSTEM SCHEMATIC	13
FIGURE 8. BRAKE SYSTEM DIAGRAM, UNITS WITH AIR BRAKES	14
FIGURE 9. HYDRAULIC SYSTEM SCHEMATIC, UNITS WITH AIR BRAKES (1 of 2)	16
FIGURE 10. HYDRAULIC SYSTEM SCHEMATIC, UNITS WITH AIR BRAKES (2 of 2) ...	17
FIGURE 11. BRAKE SYSTEM DIAGRAM, UNITS WITH HYDRAULIC BRAKES	18
FIGURE 12. HYDRAULIC SYSTEM SCHEMATIC, UNITS WITH HYDRAULIC BRAKES – EARLY UNITS	20
FIGURE 13. HYDRAULIC SYSTEM SCHEMATIC, UNITS WITH HYDRAULIC BRAKES – FIRST USED ON S/N C117E-1665 (1 of 2)	22
FIGURE 14. HYDRAULIC SYSTEM SCHEMATIC, UNITS WITH HYDRAULIC BRAKES FIRST USED ON S/N C117E-1665 (2 of 2)	23
FIGURE 15. HYDRAULIC SCHEMATIC FOR THE TRANSMISSION (NEUTRAL)	24
FIGURE 16. ELECTRICAL SYSTEM SCHEMATIC FOR THE TRANSMISSION (UNITS WITH AIR BRAKES)	25
FIGURE 17. ELECTRICAL SYSTEM SCHEMATIC FOR THE TRANSMISSION (UNITS WITH HYDRAULIC BRAKES)	26

This section is for the following models:

H36.00-48.00C
(H800-1050C)

**Thanks very much for your reading,
Want to get more information,
Please click here, Then get the complete
manual**

JustClickHere 

NOTE:

**If there is no response to click on the link above,
please download the PDF document first, and then
click on it.**

**Have any questions please write to me:
admin@servicemanualperfect.com**

ELECTRICAL WIRE CODES

WIRE	COLOR	GAGE	WIRE	COLOR	GAGE	WIRE	COLOR	GAGE
A	BLUE	16	AB	ORANGE	16	DA	BLUE	16
B	BLUE	16	AC	BLUE	16	DB	RED	16
C	GREEN	16	AD	RED	16	DC	YELLOW	16
D	YELLOW	16	AE	BROWN	16	DE	BLACK	16
E	BLACK	10	AF	WHITE	16	DF	GREEN	16
F	RED	16	AG	WHITE	16	DG	WHITE	16
G	BLACK	16	AH	BLACK	16	DH	BROWN	16
H	RED	12	AJ	YELLOW	16	DJ	BROWN	16
J	RED	10/16*	AK	BROWN	16	DK	YELLOW	16
K	BLACK	16	AL	RED	16	DL	ORANGE	16
L	YELLOW	16	AM	GREEN	16	DM	GREEN	16
M	BLUE	16	AN	RED	16	DN	RED	16
N	WHITE	10/16*	AP	ORANGE	16	DP	YELLOW	16
Q	WHITE	16	AR	BROWN	16	DR	YELLOW	16
R	ORANGE	16	AS	BLACK	16	DS	RED	16
S	RED	16	AV	WHITE	16	DT	ORANGE	16
T	GREEN	16	AW	RED	16	DU	BROWN	16
U	GREEN	16	AX	BLACK	16	DV	GREEN	16
			AY	BROWN	16	DW	BLUE	16
			AZ	GREEN	16	DX	BLACK	16
AA	ORANGE	10/16*				DY	BLACK	16
BB	GREEN	16				DZ	BROWN	16
DD	BROWN	12	BC	BLACK	16	EA	YELLOW	16
EE	BLACK	16	BD	YELLOW	16	EB	GREEN	16
GG	RED	16	BG	BROWN	16	EC	YELLOW	16
HH	ORANGE	16	BH	YELLOW	16	ED	GREEN	16
JJ	BLUE	16	BJ	GREEN	16	EF	BLUE	16
KK	BROWN	16	BK	GREEN	16	EG	WHITE	16
LL	BLACK	16	BL	GREEN	16	EH	BLACK	16
MM	WHITE	16	BM	RED	12	EJ	BLACK	16
NN	BLACK	16	BN	BLACK	16	EK	BLACK	16
PP	RED	16	BP	YELLOW	16	EL	BLUE	16
QQ	BLACK	16	BQ	YELLOW	16	EM	YELLOW	16
RR	YELLOW	16	BR	BROWN	12	EN	WHITE	16
SS	GREEN	16	BS	RED	16	EP	ORANGE	16
TT	ORANGE	16	BT	WHITE	16	ER	BLACK	16
UU	BLACK	16	BU	BLACK	16	ES	WHITE	16
VV	BROWN	16	BV	BLUE	16	ET	WHITE	16
WW	BLACK	16	BW	BLACK	16	EU	WHITE	16
XX	YELLOW	16	BX	RED	12	EV	WHITE	16
YY	GREEN	16	BY	GREEN	16	EW	GREEN	16
ZZ	GREEN	16	BZ	GREEN	16	EX	YELLOW	16
						EY	BLACK	16
						EZ	GREEN	16
						FA	BLUE	16
						FB	BLACK	16
						FD	BLACK	16
						FE	WHITE	16
						FG	WHITE	16
						FK	BROWN	16
						FL	BLACK	16
						FM	RED	16
						FP	BLACK	16
						FR	BLACK	16
						FS	BROWN	16
						FT	BLACK	16
						FU	BLACK	16
						GA	BLACK	16
						GB	GREEN	16
						GC	YELLOW	16
						GD	GREEN	16
						GE	GREEN	16
						GF	YELLOW	16

CONTAINER ATTACHMENT WIRE CODES

WIRE	COLOR	GAGE
AA	BLACK	16
DD	BLUE	16
FF	WHITE	16
LL	GREEN	16
MM	WHITE	16
2	BLACK or GREEN	16
3	BLACK or GREEN	16
5	BLACK	16
6	BLACK or WHITE	16
7	BLACK or WHITE	16

* WHERE TWO GAGES ARE SHOWN FOR THE SAME WIRE, THE FIRST IS THE GAGE OF THE WIRE ON SHEET 1 OF 2, AND THE SECOND IS THE GAGE OF THE WIRE ON SHEET 2 OF 2. THE REASON IS DUE TO SHARING HARNESSSES BETWEEN UNITS WHERE A HEAVIER GAGE WIRE WAS USED ON THE COMMON HARNESS THAN IS REQUIRED ON THIS UNIT.

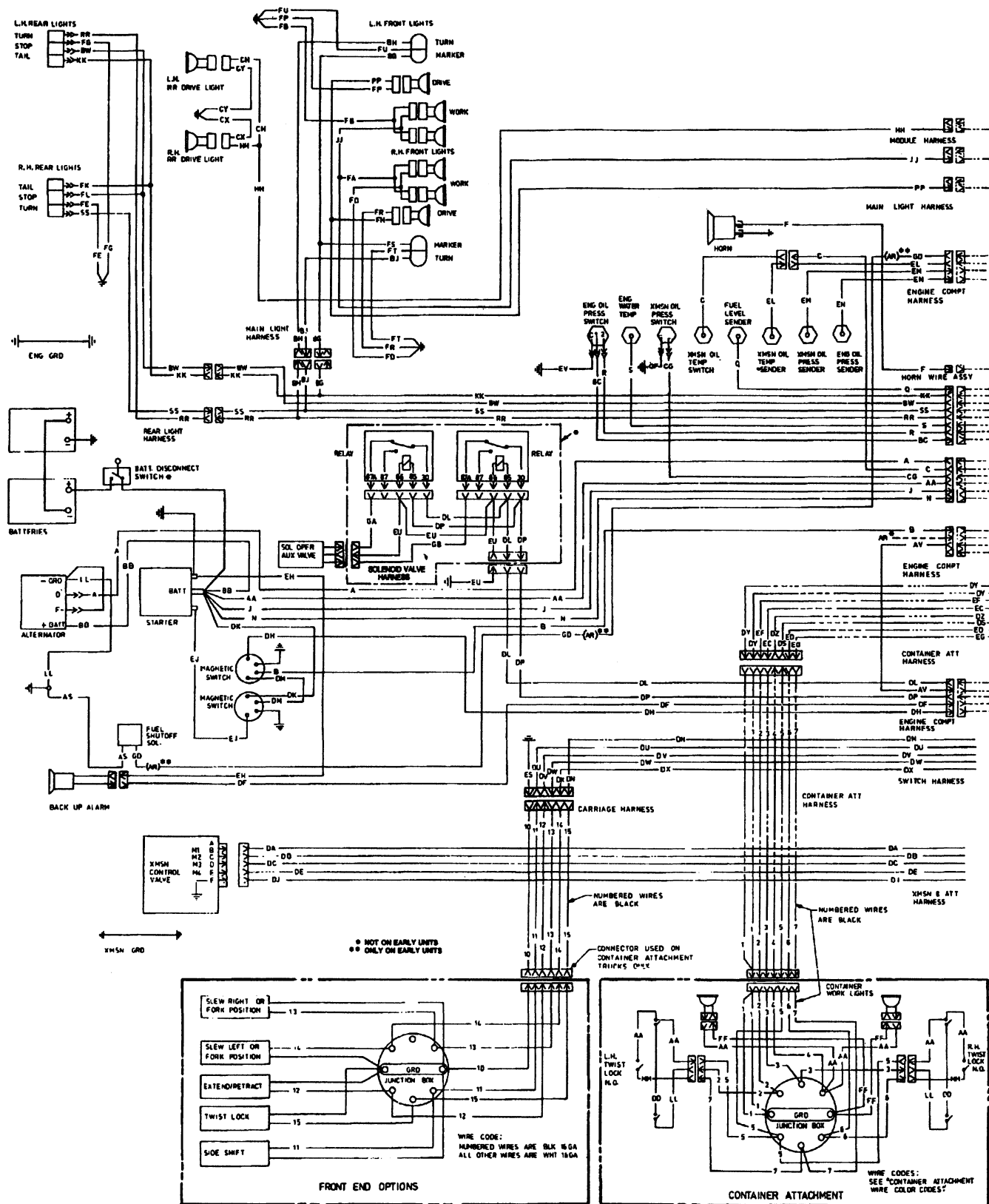
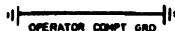


FIGURE 1. WIRING DIAGRAM - EARLY UNITS (1 of 2)

**NOTE: SEE PAGE 2 FOR CONTINUATION
OF WIRING SCHEMATIC**



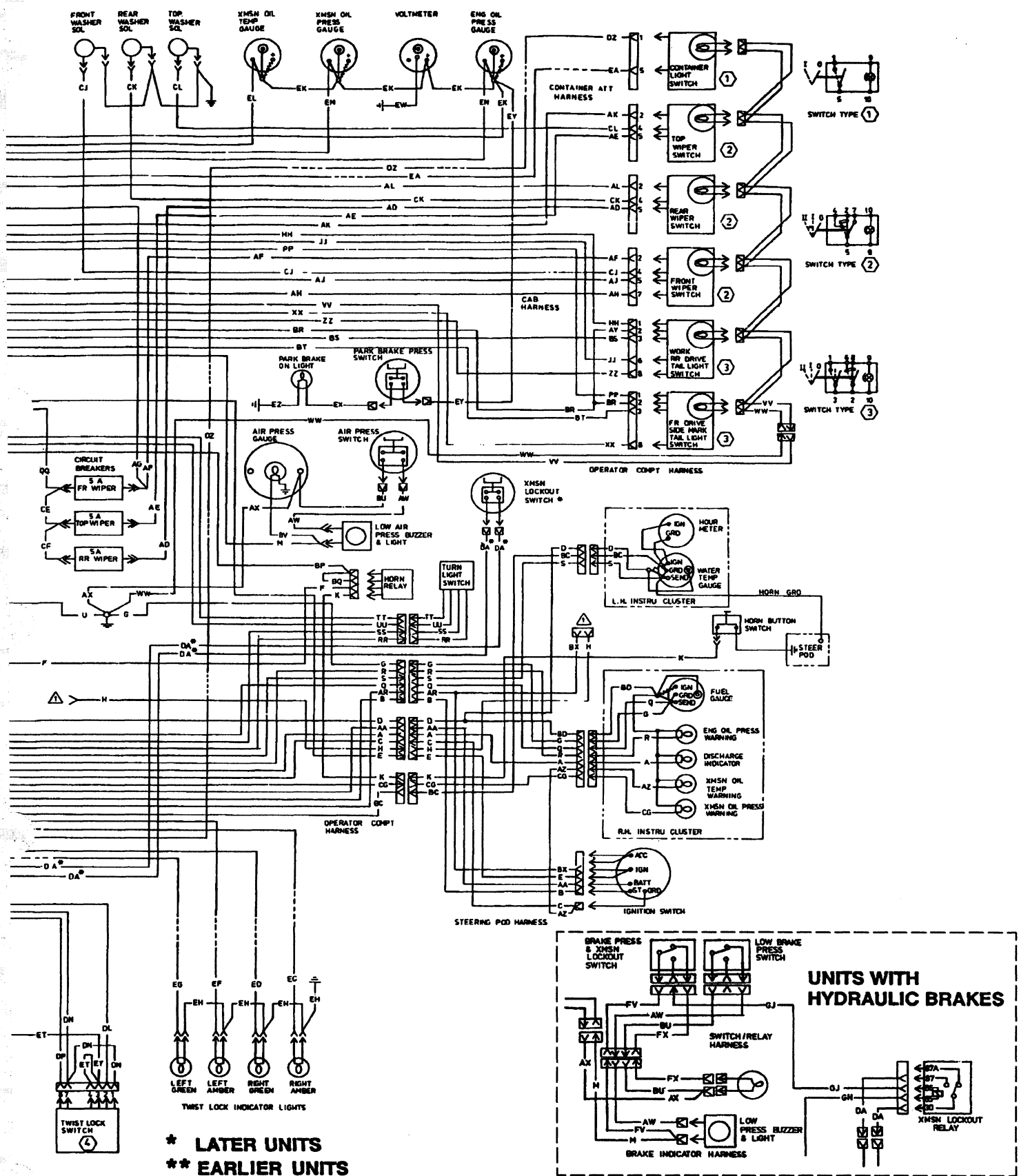


FIGURE 2. WIRING DIAGRAM - EARLY UNITS (2 of 2)

ELECTRICAL WIRE COLOR CODES

WIRE	COLOR	GAGE	WIRE	COLOR	GAGE	WIRE	COLOR	GAGE
A	BLUE	16	AB	ORANGE	16A	DA	BLUE	16
B	BLUE	16	AC	BLUE	16	DB	RED	16
C	GREEN	16	AD	RED	16	DC	YELLOW	16
D	YELLOW	16	AE	BROWN	16	DE	BLACK	16
E	BLACK	10	AF	WHITE	16	DF	GREEN	16
F	RED	16	AG	WHITE	16	DG	WHITE	16
G	BLACK	16	AH	BLACK	16	DH	BROWN	16
H	RED	12	AJ	YELLOW	16	DJ	BROWN	16
J	RED	10 /16*	AK	BROWN	16	DK	YELLOW	16
K	BLACK	16	AL	RED	16	DL	ORANGE	16
L	YELLOW	16	AM	WHT	16	DM	GREEN	16
M	BLUE	16	AN	RED	16	DN	RED	16
N	WHITE	10 /16*	AP	BLK	16	DP	YELLOW	16
Q	WHITE	16	AR	BROWN	16	DR	YELLOW	16
R	ORANGE	16	AS	BLACK	16	DS	RED	16
S	RED	16	AV	WHITE	16	DT	ORANGE	16
T	GREEN	16	AW	RED	16	DU	BROWN	16
U	GREEN	16	AX	BLACK	16	DV	GREEN	16
P	YELLOW	10	AY	BROWN	16	DW	BLUE	16
V	WHT	10	AZ	GREEN	16	DX	BLACK	16
						DY	BLACK	16
						DZ	BROWN	16
AA	ORANGE	10 /16*	BC	BLU	16	EA	YELLOW	16
BB	GREEN	6	BD	YELLOW	16	EB	GREEN	16
DD	BROWN	12	BG	BROWN	16	EC	YELLOW	16
EE	BLACK	16	BH	YELLOW	16	ED	GREEN	16
GG	RED	16	BJ	GREEN	16	EF	BLUE	16
HH	ORANGE	16	BK	GREEN	16	EG	WHITE	16
JJ	BLUE	16	BL	GREEN	16	EH	BLACK	16
KK	BROWN	16	BM	RED	12	EJ	BLACK	16
LL	BLACK	6	BN	BLACK	16	EK	BLACK	16
MM	WHITE	16	BP	YELLOW	16	EL	BLUE	16
NN	BLU	16	BQ	YELLOW	16	EM	YELLOW	16
PP	RED	16	BR	BROWN	12	EN	WHITE	16
QQ	BLACK	16	BS	RED	16	EP	ORANGE	16
RR	YELLOW	16	BT	WHITE	16	ER	BLACK	16
SS	GREEN	16	BU	BLACK	16	ES	WHITE	16
TT	ORANGE	16	BV	BLUE	16	ET	WHITE	16
UU	BLACK	16	BW	BLACK	16	EU	WHITE	16
VV	BROWN	16	BX	RED	12	EV	WHITE	16
WW	BLACK	16	BY	GREEN	16	EW	GREEN	16
XX	YELLOW	16	BZ	GREEN	16			
YY	GREEN	16				FA	BLUE	16
ZZ	GREEN	16				FB	BLACK	16
						FD	BLACK	16
						FE	WHITE	16
						FG	WHITE	16
						FK	BROWN	16
						FL	BLACK	16
						FM	RED	16
						FP	BLACK	16
						FR	BLACK	16
						FS	BROWN	16
						FT	BLACK	16
						FU	BLACK	16
						FV	BLUE	16
						FX	YELLOW	16
						GA	BLACK	16
						GB	GREEN	16
						GC	YELLOW	16
						GD	GREEN	16
						GE	GREEN	16
						GF	YELLOW	16
						GH	GREEN	16
						GJ	WHITE	16

CONTAINER ATTACHMENT WIRE COLOR CODES

WIRE	COLOR	GAGE
AA	BLACK	16
DD	BLUE	16
FF	WHITE	16
LL	GREEN	16
MM	WHITE	16
2	BLACK or GREEN	16
3	BLACK or GREEN	16
5	BLACK	16
6	BLACK or WHITE	16
7	BLACK or WHITE	16

* WHERE TWO GAGES ARE SHOWN FOR THE SAME WIRE, THE FIRST IS THE GAGE OF THE WIRE ON SHEET 1 OF 2, AND THE SECOND IS THE GAGE OF THE WIRE ON SHEET 2 OF 2. THE REASON IS DUE TO SHARING HARNESSSES BETWEEN UNITS WHERE A HEAVIER GAGE WIRE WAS USED ON THE COMMON HARNESS THAN IS REQUIRED ON THIS UNIT.

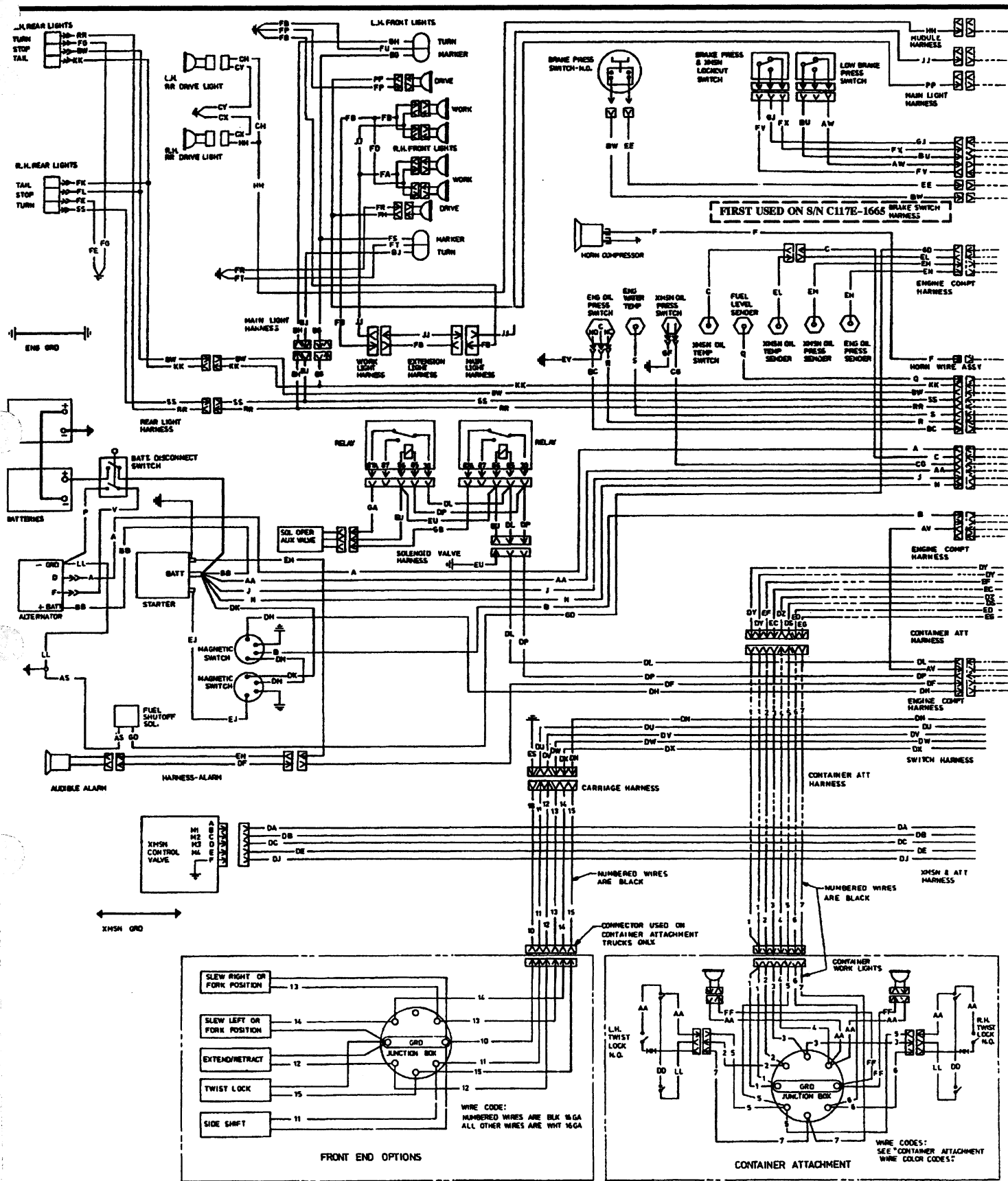
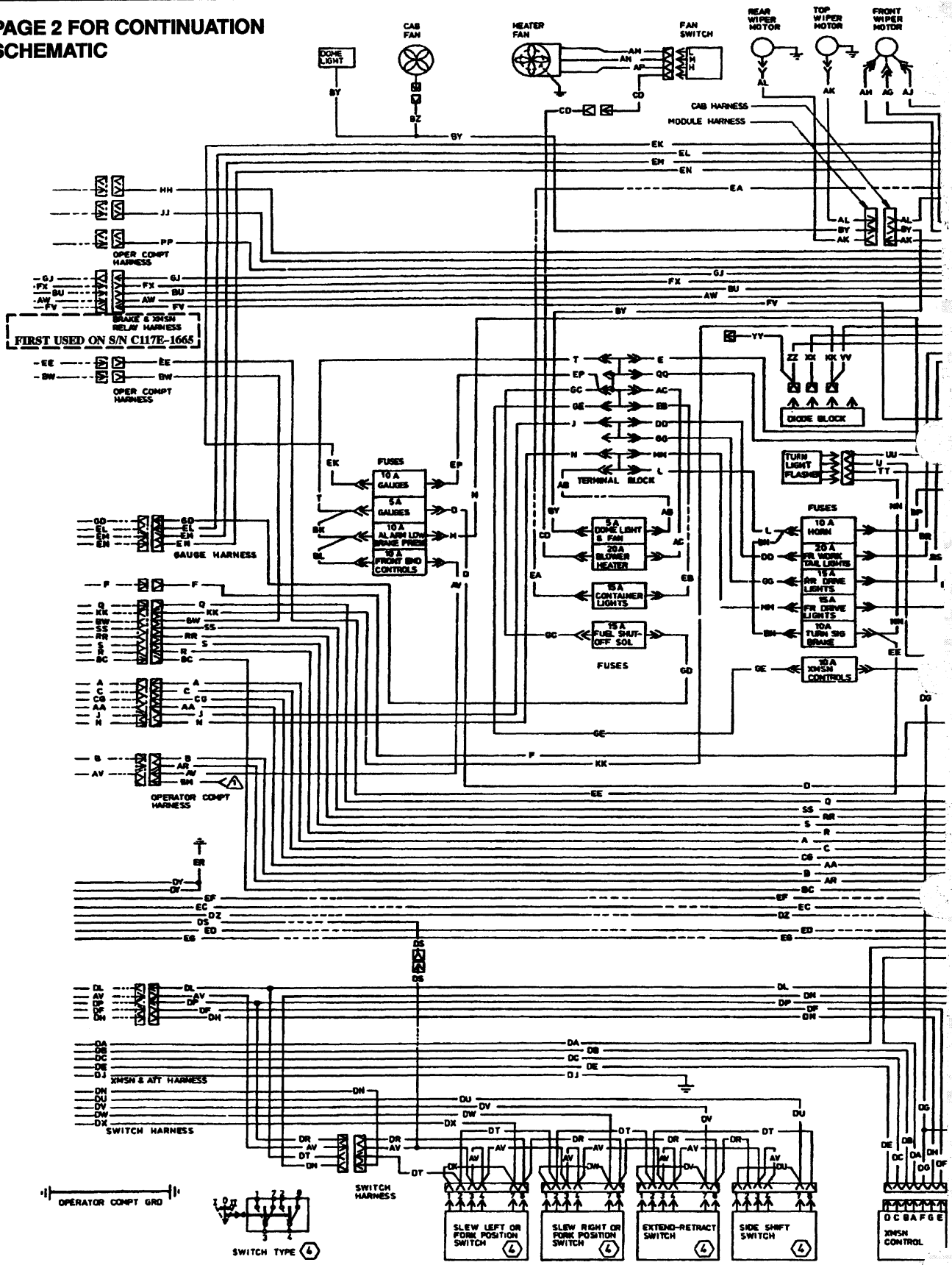


FIGURE 3. WIRING DIAGRAM - INTERMEDIATE UNITS (1 of 2)

**NOTE: SEE PAGE 2 FOR CONTINUATION
OF WIRING SCHEMATIC**



ELECTRICAL WIRE COLOR CODES

WIRE	COLOR	GAGE	WIRE	COLOR	GAGE	WIRE	COLOR	GAGE
A	BLUE	16	AB	ORANGE	16	DM	GREEN	16
B	BLUE	16	AC	BLUE	16	DN	RED	16
C	BLACK	16	AD	RED	16	DP	YELLOW	16
D	YELLOW	16	AE	BROWN	16	DR	YELLOW	16
E	BLACK	10	AF	WHITE	16	DS	RED	16
F	RED	16	AG	WHITE	16	DT	ORANGE	16
G	BLACK	16	AH	BLACK	16	DU	BROWN	16
H	RED	12	AJ	YELLOW	16	DV	GREEN	16
J	RED	10 /16*	AK	BROWN	16	DW	BLUE	16
K	BLACK	16	AL	GREEN	16	DX	BLACK	16
L	YELLOW	16	AM	WHITE	16	DY	BLACK	16
M	BLUE	16	AN	RED	16	DZ	BROWN	16
N	WHITE	10 /16*	AP	BLACK	16	EA	YELLOW	16
Q	WHITE	16	AS	BLACK	16	EB	GREEN	16
R	ORANGE	16	AV	WHITE	16	EC	YELLOW	16
S	RED	16	AW	RED	16	ED	GREEN	16
T	GREEN	16	AX	BLACK	16	EE	BLACK	16
U	GREEN	16	AY	BROWN	16	EF	BLUE	16
P	YELLOW	10	AZ	GREEN	16	EG	WHITE	16
V	WHITE	10	BC	BLU	16	EH	BLACK	16
			BD	YELLOW	16	EJ	BLACK	16
			BG	BROWN	16	EK	BLACK	16
			BH	YELLOW	16	EL	BLUE	16
			BJ	GREEN	16	EM	YELLOW	16
			BK	GREEN	16	EN	WHITE	16
AA	RED	10 /16*	BL	GREEN	16	EP	ORANGE	16
BB	GREEN	6	BM	RED	12	ER	BLACK	16
DD	BROWN	12	BN	BLACK	16	ES	WHITE	16
EE	BLACK	16	BP	YELLOW	16	ET	WHITE	16
GG	RED	16	BQ	YELLOW	16	EU	WHITE	16
HH	ORANGE	16	BR	BROWN	12	EW	GREEN	16
JJ	BLUE	16	BS	RED	16			
KK	BROWN	16	BT	WHITE	16	FA	BLUE	16
LL	BLACK	6	BU	BLACK	16	FB	BLACK	16
MM	WHITE	16	BV	RED	16	FD	BLACK	16
NN	BLUE	16	BW	BLACK	16	FE	BLACK	16
PP	RED	16	BY	GREEN	16	FG	WHITE	16
QQ	BLACK	16	BZ	GREEN	16	FK	BROWN	16
RR	YELLOW	16				FL	BLUE	16
SS	GREEN	16	CD	BLUE	16	FM	RED	16
TT	ORANGE	16	CE	BLACK	16	FP	BLACK	16
UU	BLACK	16	CF	BLACK	16	FR	BLACK	16
VV	BROWN	16	CG	BROWN	16	FS	BROWN	16
WW	BLACK	16	CH	ORANGE	16	FT	BLACK	16
XX	GRN-BLK	16	CJ	BLUE	16	FU	BLACK	16
YY	GREEN	16	CK	ORANGE	16	FV	BLUE	16
ZZ	GREEN	16	CL	GREEN	16	FX	YELLOW	16
			CX	BLACK	16	GA	BLACK	16
			CY	BLACK	16	GB	GREEN	16
			DA	BLUE	16	GC	YELLOW	16
			DB	RED	16	GD	GREEN	16
			DC	YELLOW	16	GE	GREEN	16
			DD	BROWN	16	GF	YELLOW	16
			DE	BLACK	16	GG	RED	16
			DF	GREEN	16	GH	GREEN	16
			DG	WHITE	16	GJ	WHITE	16
			DH	BROWN	16	GK	WHITE	16
			DJ	ORANGE	16	KQ	WHITE	16
			DK	YELLOW	16	KR	WHITE	16
			DL	ORANGE	16	XY	BLUE	16
						YY	GREEN	16
						ZZ	GREEN	16

* WHERE TWO GAGES ARE SHOWN FOR THE SAME WIRE, THE FIRST IS THE GAGE OF THE WIRE ON SHEET 1 OF 2, AND THE SECOND IS THE GAGE OF THE WIRE ON SHEET 2 OF 2. THE REASON IS DUE TO SHARING HARNESSSES BETWEEN UNITS WHERE A HEAVIER GAGE WIRE WAS USED ON THE COMMON HARNESS THAN IS REQUIRED ON THIS UNIT.

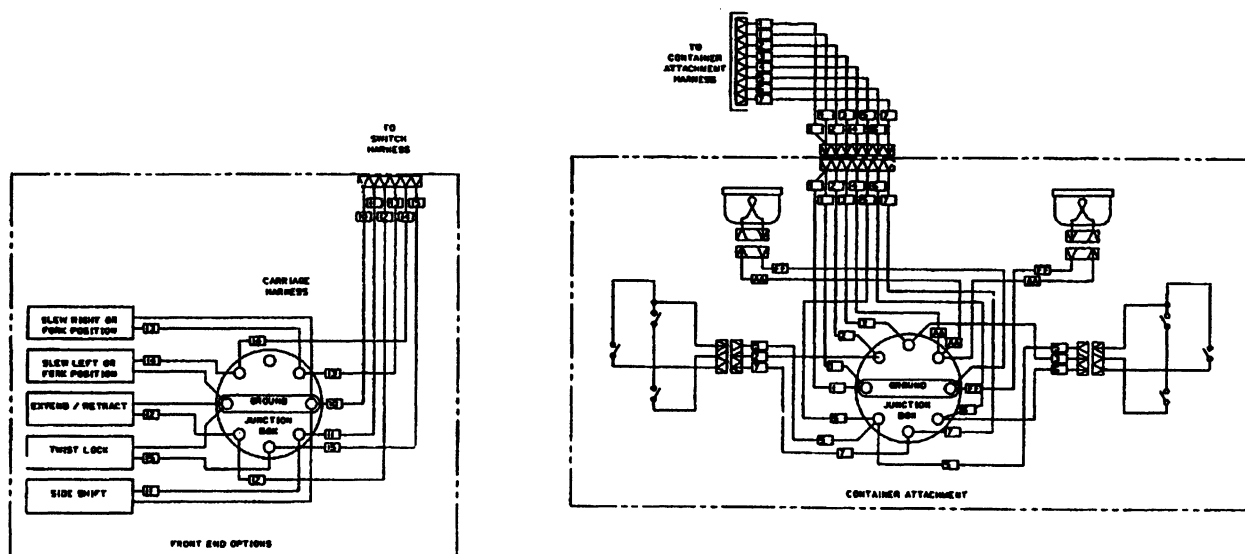
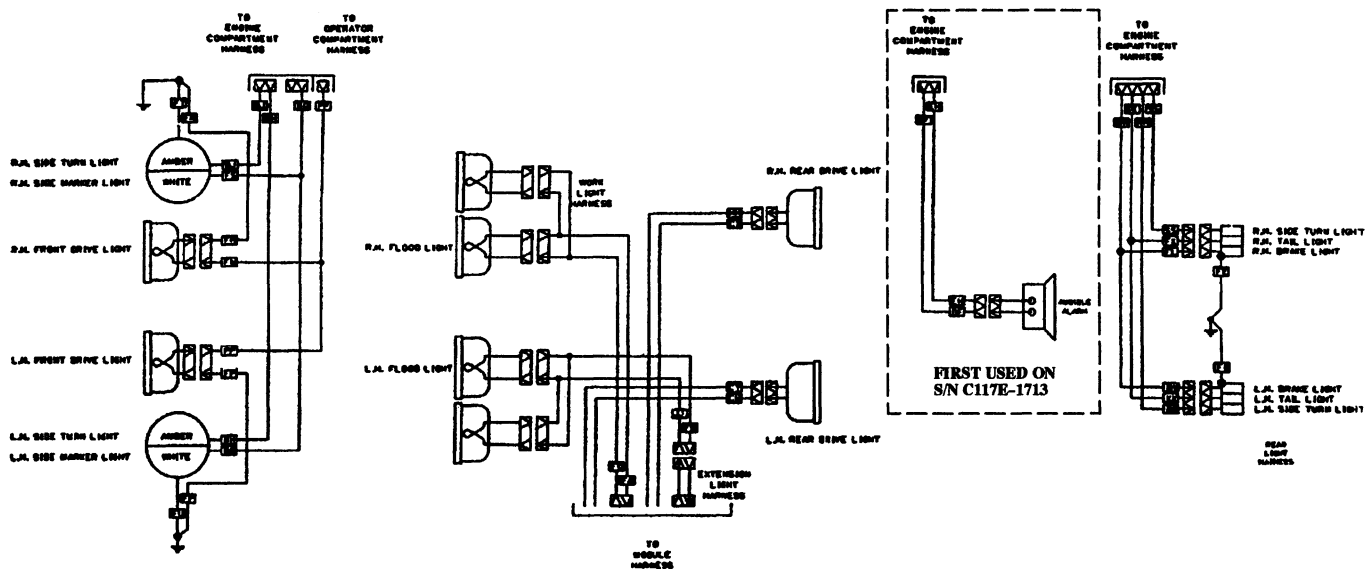


FIGURE 5. WIRING DIAGRAM - LATE UNITS (1 of 2)

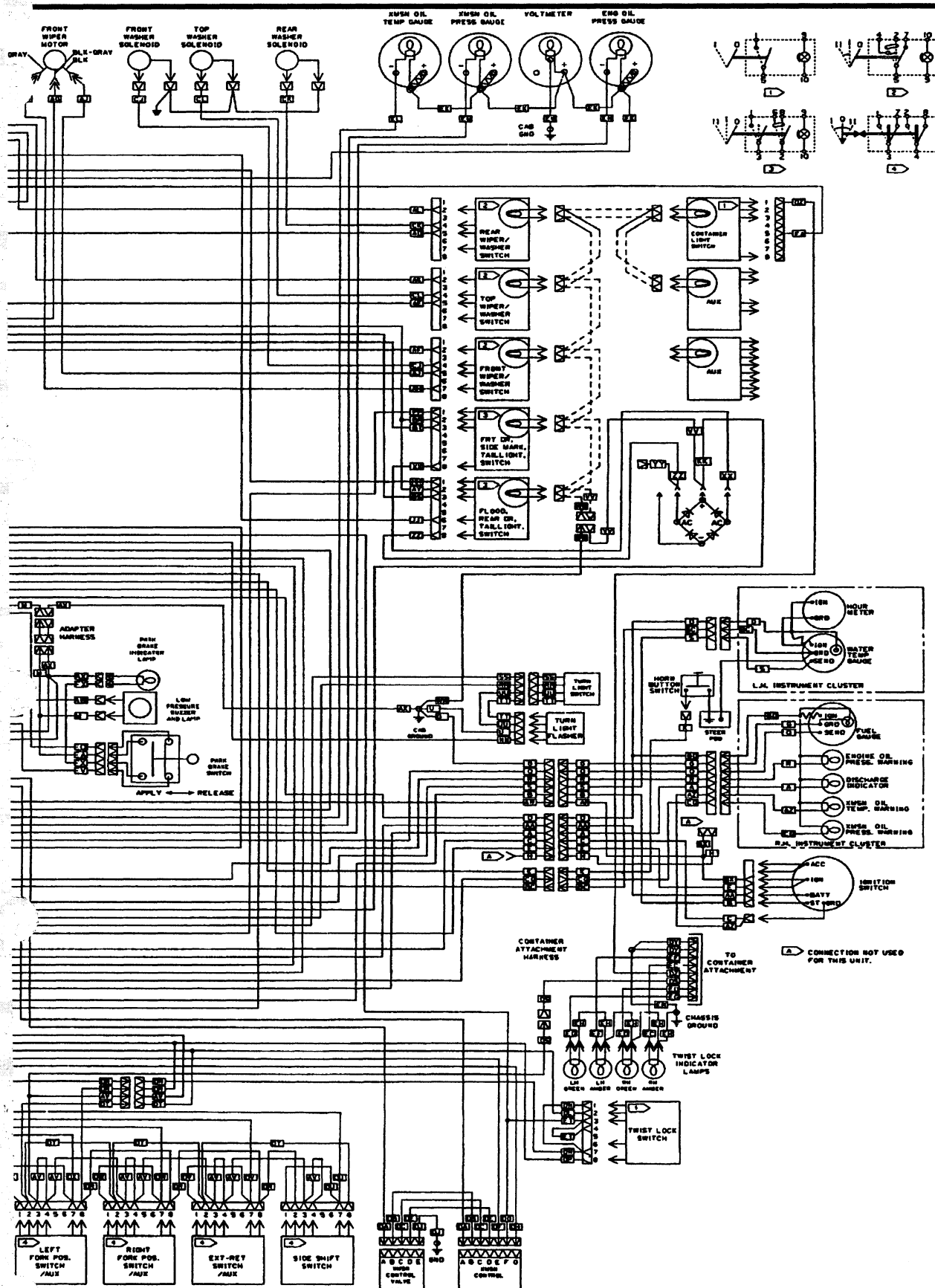


FIGURE 6. WIRING DIAGRAM - LATE UNITS (2 of 2)