

PARTS MANUAL

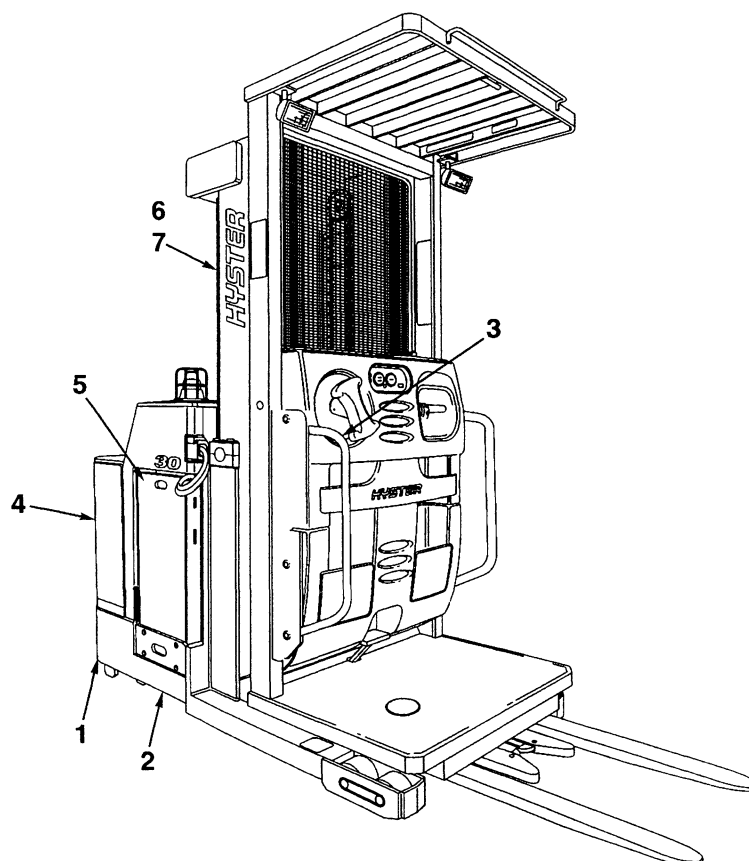
**ELECTRIC
R30XMS**

(C174)

CUSTOMER EDITION

HYSTER

ILLUSTRATED CONTENTS



NA01017

1	Frame	1
2	Drive Unit	11
3	Steering	17
4	Hydraulic	25
5	Electrical	33
6	Mast - Two Stage	47
7	Mast - Three Stage	61
	Options	75
	Numerical Index	91

TABLE OF CONTENTS

DESCRIPTION	PAGE NO.
BATTERY DISCONNECT (Figure 24)	39
BATTERY TRAY (Figure 57)	90
BRAKE (Figure 9) FIRST USED ON S/N C174N01670W	16
BRAKE (Figure 8) LAST USED ON S/N C174N01669W	15
CARRIAGE (Figure 43) THREE STAGE	72
CARRIAGE (Figure 36) TWO STAGE	58
CHAINS, PINS, AND ANCHORS (Figure 42) THREE STAGE	70
CHAINS, PINS, AND ANCHORS (Figure 35) TWO STAGE	56
CONTACTOR - FORWARD AND REVERSE (Figure 28)	44
CONTACTOR PANEL (Figure 27)	43
DECAL AND PLATE LOCATION (Figure 3)	6
DRIVE MOTOR (Figure 7)	14
DRIVE UNIT (Figure 6)	12
ELECTRICAL (Figure 22) FIRST USED ON S/N C174N01670W	36
ELECTRICAL (Figure 21) LAST USED ON S/N C174N01669W	34
FIXED CONSOLE (Figure 47)	78
FORK (Figure 45)	76
FULL BODY FAN INSTALLATION (Figure 53)	84
GUIDANCE ASSEMBLY (Figure 55)	88

**Thanks very much for your reading,
Want to get more information,
Please click here, Then get the complete
manual**

JustClickHere 

NOTE:

**If there is no response to click on the link above,
please download the PDF document first, and then
click on it.**

**Have any questions please write to me:
admin@servicemanualperfect.com**

TABLE OF CONTENTS

DESCRIPTION	PAGE NO.
GUIDE ROLLER (Figure 56)	89
HOODS AND COVERS (Figure 1)	2
HYDRAULIC (Figure 15)	26
HYDRAULIC MOTOR (Figure 19) USED ON MASTS 216 IN MFH AND ABOVE	30
HYDRAULIC MOTOR (Figure 20) USED ON MASTS UP TO 213 IN MFH	31
HYDRAULIC PUMP (Figure 18) USED ON MAST 216 IN MFH AND ABOVE	29
HYDRAULIC PUMP (Figure 17) USED ON MAST UP TO 213 IN MFH	28
HYDRAULIC TANK (Figure 16)	27
INSTRUMENT PANEL (Figure 23)	38
LIFT CONTACTOR (Figure 29)	45
LIFT LIMIT SWITCH INSTALLATION (Figure 52)	83
LIFT (Figure 39) THREE STAGE WITHOUT WIRE GUIDANCE	64
LIFT (Figure 40) THREE STAGE WITH WIRE GUIDANCE	66
LIFT (Figure 32) TWO STAGE WITHOUT WIRE GUIDANCE	50
LIFT (Figure 33) TWO STAGE WITH WIRE GUIDANCE	52
LIGHT AND FAN INSTALLATION (Figure 50)	81
LOAD WHEEL (Figure 2)	4
MAIN CONTACTOR (Figure 30)	46
MAIN CYLINDER INSTALLATION (Figure 41) THREE STAGE	68
MAIN CYLINDER INSTALLATION (Figure 34) TWO STAGE	54

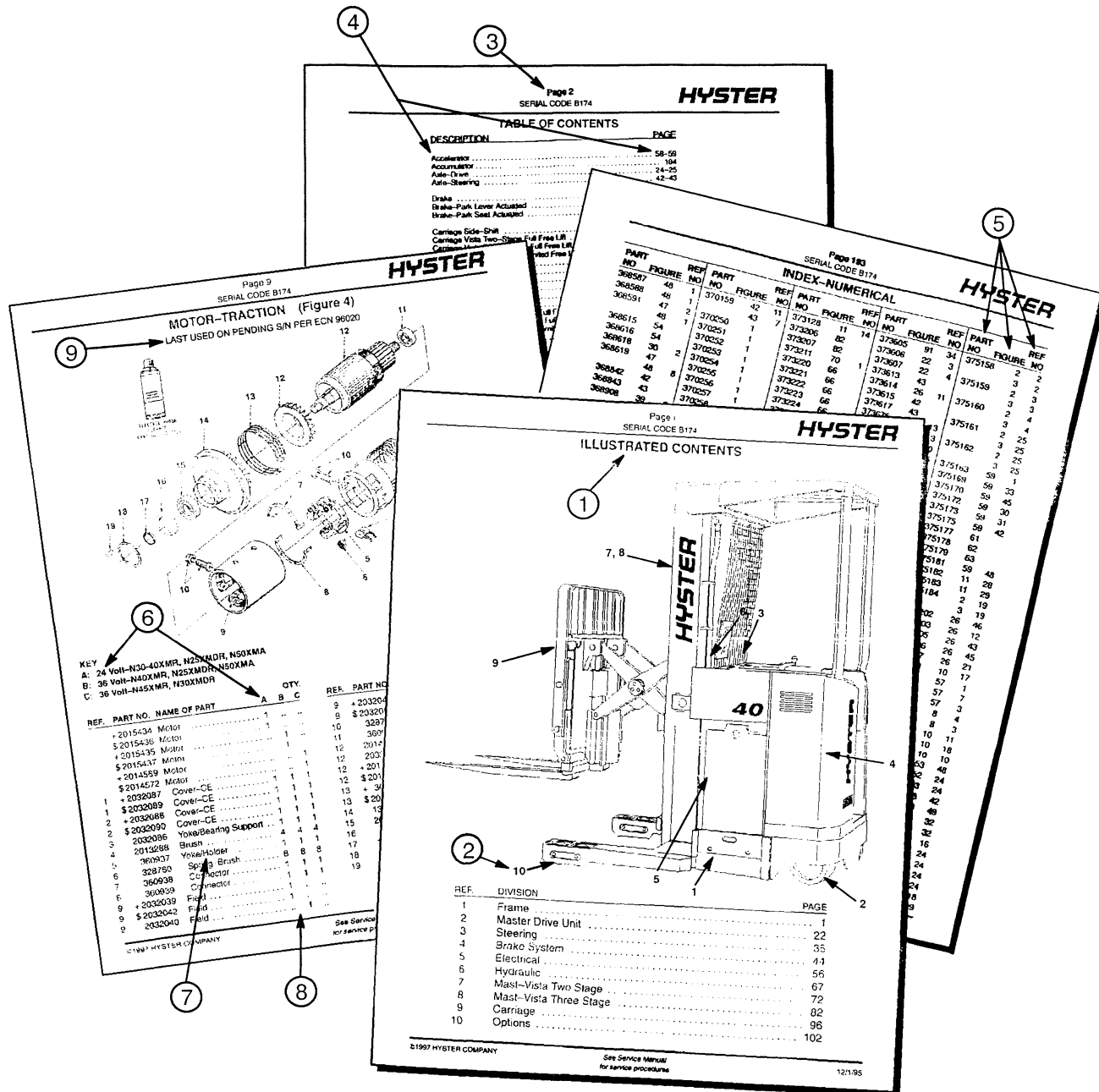
TABLE OF CONTENTS

DESCRIPTION	PAGE NO.
MAIN CYLINDER (Figure 44) THREE STAGE	74
MAIN CYLINDER (Figure 37) TWO STAGE	60
MASTS - OUTER AND INNER (Figure 31) TWO STAGE	48
MASTS - OUTER, INTERMEDIATE, AND INNER (Figure 38) THREE STAGE	62
MULTI-FUNCTION CONTROL HANDLE (Figure 25)	40
MULTI-TURN STEERING WITHOUT WIRE GUIDANCE (Figure 48)	79
MULTI-TURN STEERING WITH WIRE GUIDANCE (Figure 49)	80
OPERATOR PLATFORM (Figure 4)	8
OPERATOR PLATFORM CONTROLS (Figure 5)	10
PALLET CLAMP (Figure 46)	77
PIVOTING HANDRAIL (Figure 54)	86
RELAY PANEL (Figure 26) LAST USED ON S/N C174N01669W	42
RETURN TO CENTER (RTC) STEER (Figure 12)	22
SPEED REDUCER WITH WIRE GUIDANCE (Figure 14)	24
STEERING MOTOR (Figure 13)	23
STEERING WITHOUT WIRE GUIDANCE (Figure 10)	18
STEERING WITH WIRE GUIDANCE (Figure 11)	20
WIRE GUIDANCE SENSORS (Figure 51)	82

HOW TO USE THE ILLUSTRATED PARTS MANUAL

This parts manual describes and illustrates assemblies, subassemblies, and detail parts needed for service replacement.

The different constructions are indicated by keys, symbols, and footnotes.



WHEN THE PART NUMBER AND THE NEXT HIGHER ASSEMBLY ARE NOT KNOWN:

1. Determine the function and application of the part required. Turn to the Illustrated Contents page, immediately behind the front cover, and select the most appropriate area.
2. Use the Section Index to determine the assembly that would normally contain the part required. Then locate the part on the assembly breakdown page.

WHEN THE PART NUMBER IS NOT KNOWN AND THE NEXT HIGHER ASSEMBLY IS KNOWN:

3. Determine the assembly that the required part is used on. Turn to the Table of Contents page immediately following the Illustrated Contents.
4. Locate the assembly that the required part is used on, and turn to the page indicated for that assembly. Locate the part on the assembly breakdown page.

WHEN THE PART NUMBER IS KNOWN:

5. Use the Numerical Index to find the part number. Turn to the Page listed, and locate the part indicated by the reference number.

GENERAL:

The assembly breakdowns include part numbers, description, quantities required, keys, and footnotes to help in selecting the correct parts.

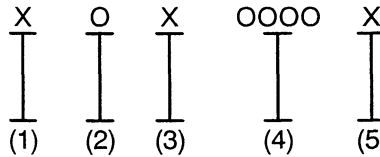
6. Keys show the effective serial numbers for two or more similar assemblies, RH and LH assembly parts, etc. Select the appropriate key; "A", "B", "C", or "D" and the corresponding quantity column to find the required parts.
7. Indented descriptions under "Name of Part" are used to indicate subparts of assemblies. A major assembly is not indented. Parts under the first, second, or third indent are subparts of the major assembly shown above them.
8. Quantities shown are for one assembly. Note that if more than one assembly is indicated, subsequent subparts still show only those quantities required for a single assembly.
9. Engineering Change Notice (ECN) numbers for pending serial numbers are shown to allow for the inclusion of the most current parts information. Contact your local dealer for Hyster lift trucks for serial number information listed by ECN number.

ORDERING PARTS:

When ordering replacement parts, give the unit serial number, part number, name of part, and quantity required.

For any further information on parts, service, or ordering, consult your local dealer for Hyster lift trucks.

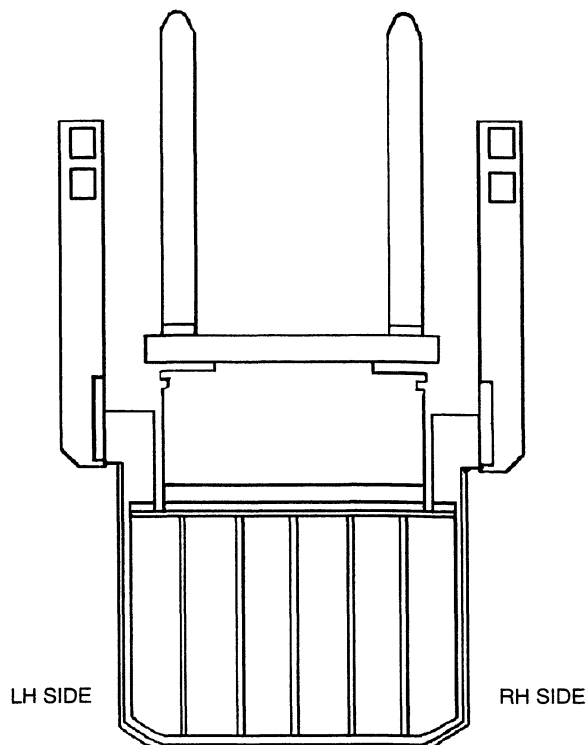
UNIT IDENTIFICATION UNIT S/N



- (1) & (2) The first letter and number denote the design series and model of the unit.
- (3) The second letter denotes the plant at which the unit was manufactured.
- (4) The number series denotes the serial number of the unit.
- (5) The final letter denotes the year of manufacture, starting with "A" in 1957 and 1980. The letters "I", "O", and "Q" will not be used.

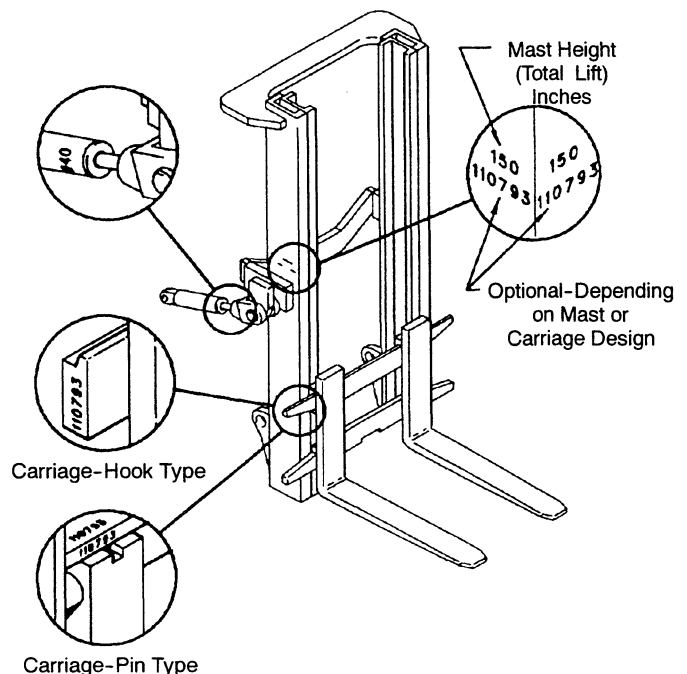
For pending serial numbers, contact your local Hyster dealer.

Parts referred to in this book as right-hand or left-hand parts are in accordance with the illustration below.



LIFT EQUIPMENT IDENTIFICATION

- 1. Mast group numbers and total lift heights are stamped on the RH outer mast approximately 4 feet from the bottom of the fork. The group numbers include the inner and outer masts, lift cylinder, lift chain, and bleeder hoses or pipes.
- 2. The carriage and tilt cylinder numbers are located as shown. Lift cylinder numbers are stamped on the cylinder shell near the bleeder screw or on the chain anchor. Fork part number, capacity rating, plant code letter, and date of manufacture are stamped approximately 6 inches below the top RH side of the forks. Always refer to these group and part numbers when ordering service parts.



PUBLICATIONS

Every new lift truck is provided with an OPERATING MANUAL. This manual has information that the operator must know for inspection and operation of the lift truck.

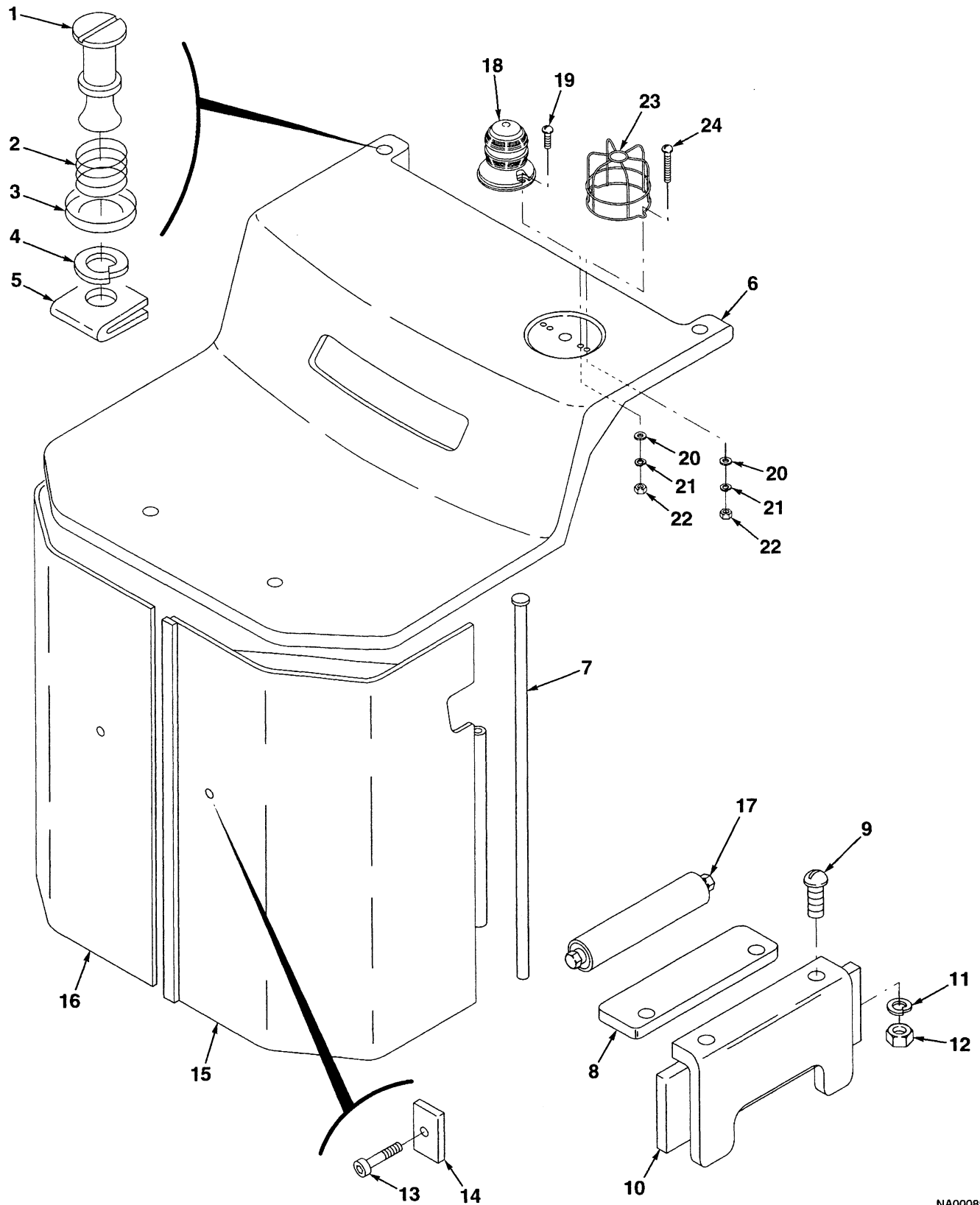
SERVICE MAINTENANCE MANUALS, which provide service and overhaul procedures, and PARTS MANUALS with complete replacement part identification, are available at a nominal fee from your Hyster dealer to assist users in effectively maintaining Hyster lift trucks in a safe, useful condition. See the list below for information on ordering specific publications for this model lift truck.

PUBLICATION	HYSTER PART NUMBER
Operating Manual English (U.S.)	1461936
Service Manual (Complete)	1465256
Parts Manual	1469742

FRAME

DESCRIPTION	PAGE NO.
DECAL AND PLATE LOCATION (Figure 3)	6
HOODS AND COVERS (Figure 1)	2
LOAD WHEEL (Figure 2)	4
OPERATOR PLATFORM (Figure 4)	8
OPERATOR PLATFORM CONTROLS (Figure 5)	10

HOODS AND COVERS (Figure 1)

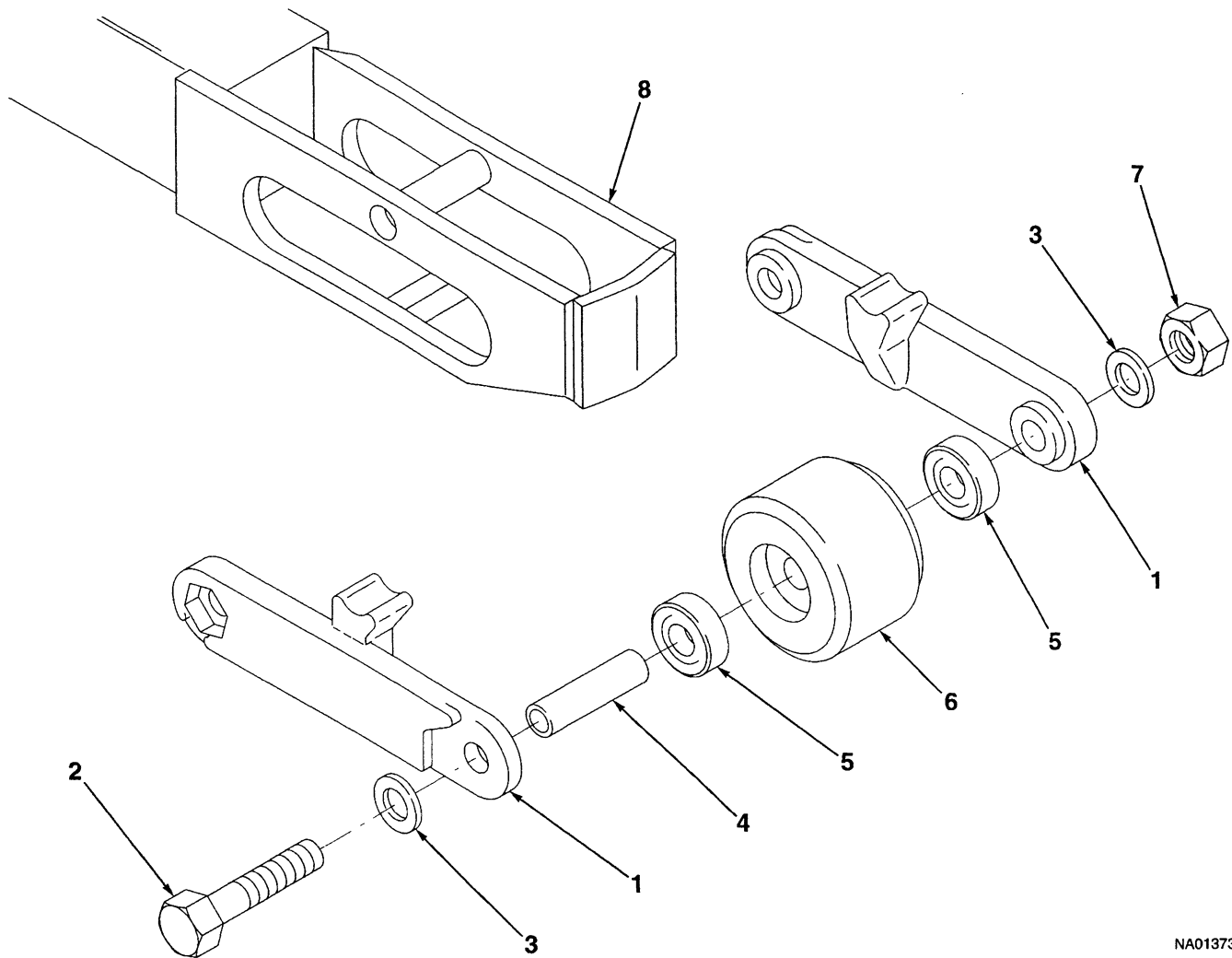


NA00089

HOODS AND COVERS

REF.	PART NO.	NAME OF PART	QTY.	REF.	PART NO.	NAME OF PART	QTY.
1	2303427	Stud	4	13	2038678	Screw	2
2	2305960	Spring	4	14	269200	Nut	2
3	2307518	Washer	4	15	2305768	Door (RH)	1
4	2308460	Retainer	4	16	2305571	Door (LH)	1
5	188307	Nut	4	17	2309222	Roller	5
6	1460341	Cover	1	18	2034636	Strobe Light	1
7	2308824	Hinge Pin	2	19	16723	Screw	2
8	2307341	Spacer	2	20	197067	Washer	6
9	2310605	Screw	4	21	15152	Lockwasher	4
10	2302516	Battery Retainer	2	22	15052	Nut	4
11	15155	Lockwasher	4	23	2035661	Lightguard	1
12	15055	Nut	4	24	16729	Screw	2

LOAD WHEEL (Figure 2)



NA01373

KEY

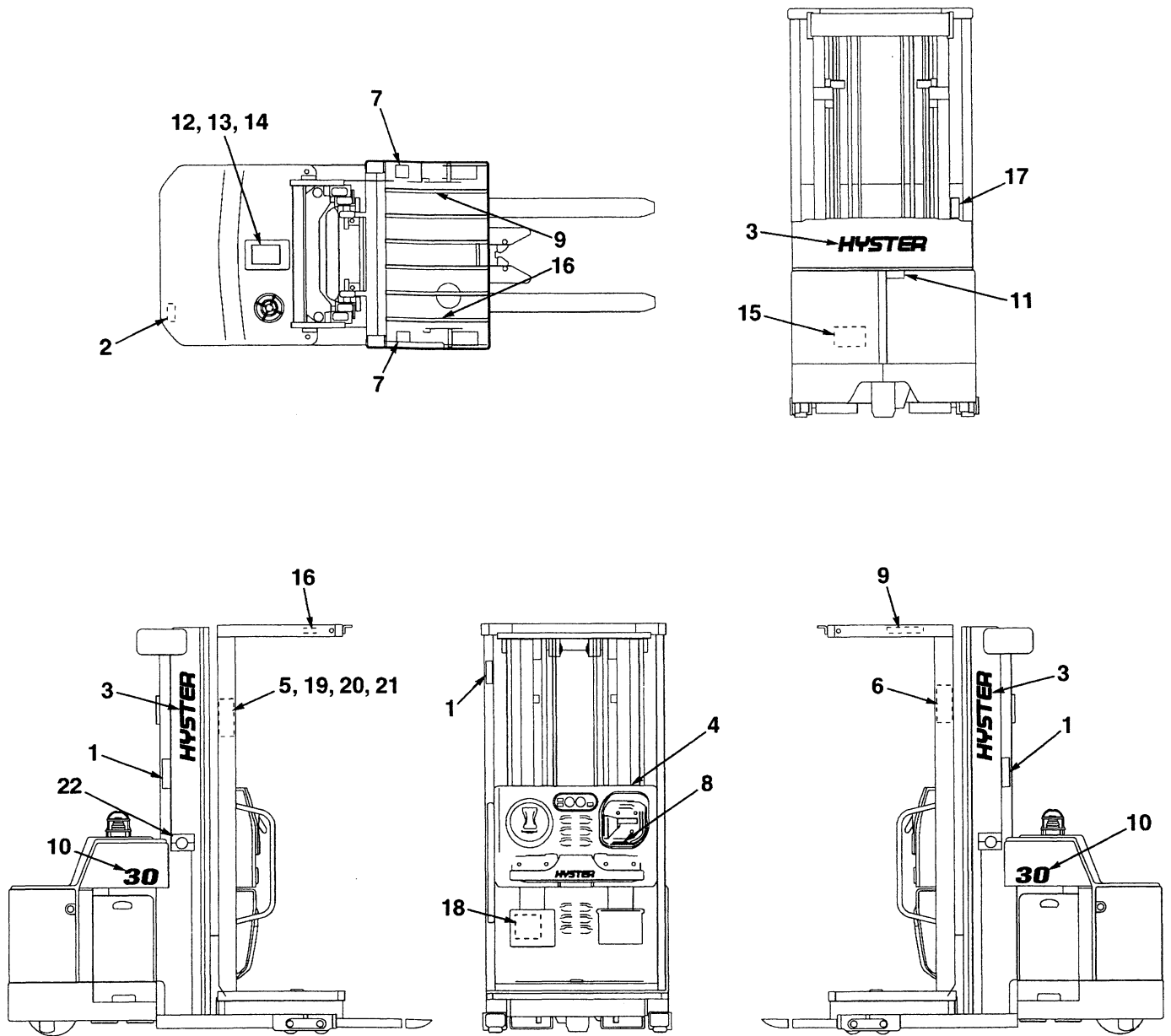
A: 4 in × 3 in Load Wheels

B: 5 in × 3 in Load Wheels

REF.	PART NO.	NAME OF PART	QTY.		REF.	PART NO.	NAME OF PART	QTY.	
			A	B				A	B
1	360121	Bracket	4	4	5	124629	Bearing		8
2	389608	Capscrew	4	..	6	1032195	Wheel	4	..
2	220804	Capscrew	4	6	365649	Wheel	4
3	15146	Washer	4	4	7	222673	Nut	4	4
4	374563	Sleeve	4	4	8	Base Arm	1	1
5	194723	Bearing	8						

This image shows a single sheet of white paper with horizontal ruling lines. The lines are evenly spaced and run across the width of the page. There are no margins, text, or other markings on the paper.

DECAL AND PLATE LOCATION (Figure 3)

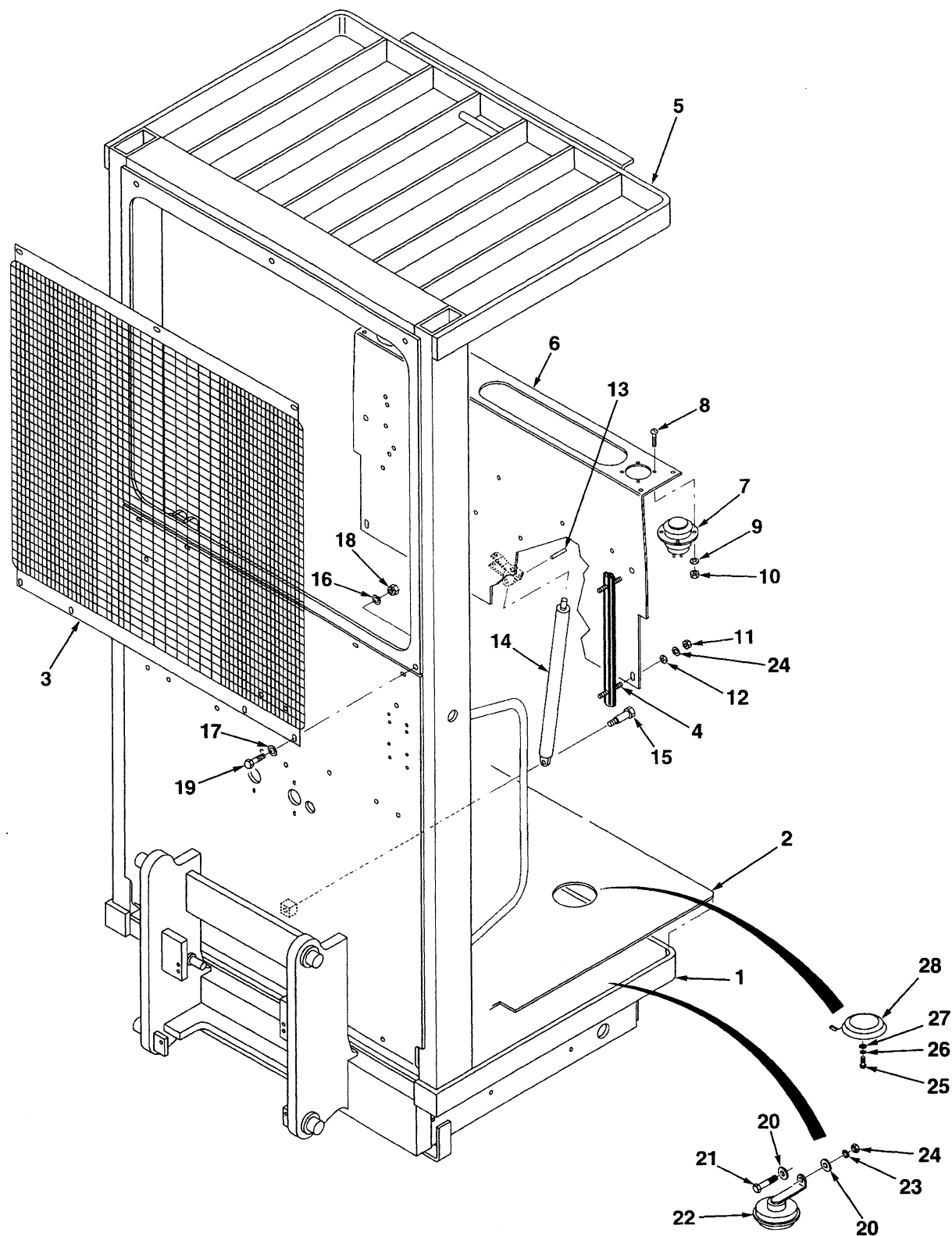


NA01693

DECAL AND PLATE LOCATION

REF.	PART NO.	NAME OF PART	QTY.	REF.	PART NO.	NAME OF PART	QTY.
1	380171	Label - Warning	2	12	335989	Base - Information	1
2	2308767	Label - Emergency Lower	1	12	335991	Cover - Information	1
3	2306018	Label - Hyster (Yellow)	3	13	1461936	Operating Manual	1
4	2036335	Label - Key Switch	1	14	2307400	Rivet	4
5	1335137	Nameplate Tag	1	15	389692	Label - Patents/Trademarks	1
6	814880	Label - Warning	1	16	1335424	Decal - Overhead Guard	1
7	340728	Label - Warning	2	17	213826	U.L. Plate	1
8	1460696	Label - Function	1	18	1460726	Label - Hyster TM	1
9	310009	Label - Warning	1	19	1460690	Capacity Decal	1
10	2311746	Label - Model	2	20	389687	Nameplate Cover	1
11	2305213	Label - Emergency Lower	1	21	170658	Rivet	8

OPERATOR PLATFORM (Figure 4)



NA01656

OPERATOR PLATFORM

REF.	PART NO.	NAME OF PART	QTY.	REF.	PART NO.	NAME OF PART	QTY.
1	1458958	Platform (40.25 in)	1	16	15154	Lockwasher	7
2	1460348	Mat (40 in)	1	17	15127	Washer	7
3	1458542	Guard - Wire	1	18	15054	Nut	7
4	1459452	Slide Seat/Console	3	19	18720	Capscrew	7
5 ^a	Weldment Overhead Guard ...	1	20	15127	Washer	2
6	1461777	Panel Weldment	1	21	18466	Screw	2
7	2036352	Button Assembly	1	22	1484267	Horn (24V)	1
8	16850	Screw	4	23	15154	Lockwasher	2
9	15163	Washer	4	24	15054	Nut	2
10	15039	Nut	4	25	18706	Screw	4
11	239503	Nut	8	26	197067	Washer	4
12	292681	Washer	8	27	15152	Lockwasher	4
13	18828	Pin	1	28	2034881	Switch - Foot	1
14	2037674	Gas Spring	1				
15	1382662	Shoulder Bolt	1				

^a Not Serviced Separately