

# **PARTS MANUAL**

**ELECTRIC  
N30, 40, 45XMR,  
N25, 30XMDR,  
N50XMA**

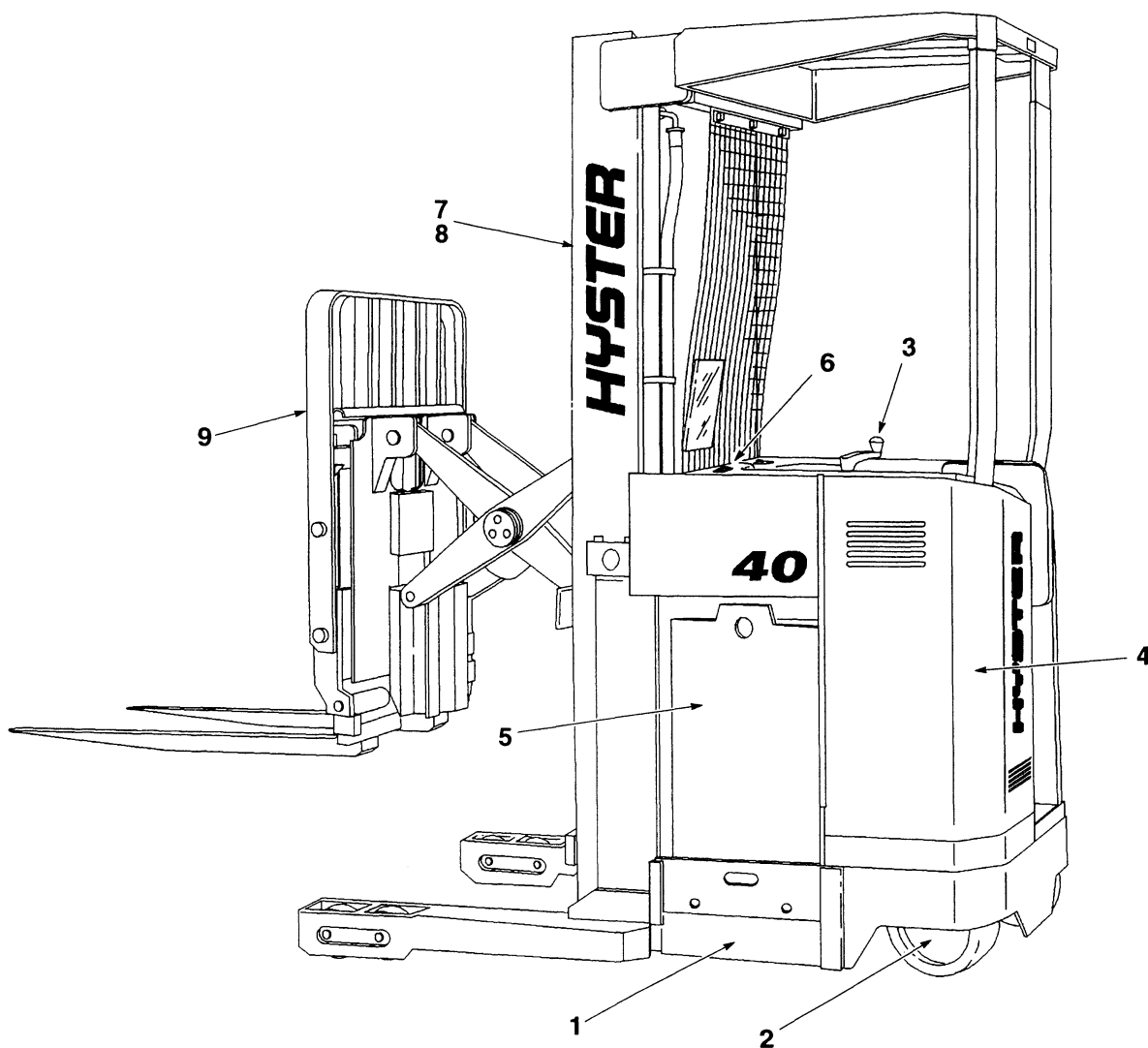
**(E138)**

**CUSTOMER EDITION**

# ***HYSTER***



**ILLUSTRATED CONTENTS**



REF.	DIVISION	PAGE
1	Frame .....	1
2	Drive Unit .....	11
3	Steering .....	21
4	Brakes .....	33
5	Electrical .....	41
6	Hydraulic .....	69
7	Mast—Two Stage—Limited Free Lift .....	87
8	Mast—Three Stage—Full Free Lift .....	97
9	Carriage .....	117
10	Options .....	133
11	Numerical Index .....	150

---

**TABLE OF CONTENTS**

<b>DESCRIPTION</b>	<b>PAGE NO.</b>
BACKREST (Figure 80) FRONT CARRIAGE MOUNT—48 INCH .....	139
BACKREST (Figure 79) SIDE REACH MOUNT—48 INCH .....	139
BATTERY CONNECTOR (Figure 40) .....	66
BRAKE (Figure 19) .....	36
BRAKE PEDAL AND OPERATOR SENSING SWITCH (Figure 21) .....	38
BRAKE SYSTEM (Figure 18) .....	34
CARRIAGE (Figure 69) N50XMA .....	128
CARRIAGE—INNER FRAME (Figure 68) .....	124
CARRIAGE—OUTER FRAME—SIDESHIFTER (Figure 65) .....	118
CARRIAGE—OUTER FRAME—STANDARD (Figure 64) .....	116
CARRIAGE—SCISSOR—24 INCH REACH (Figure 66) .....	120
CARRIAGE—SCISSOR—42 INCH REACH (Figure 67) .....	122
CASTER WHEEL (Figure 6) .....	14
CHAINS, PINS AND ANCHORS (Figure 59) THREE STAGE (FFL) FULL FREE LIFT .....	106
CHAINS, PINS AND ANCHORS (Figure 52) TWO STAGE (LFL) LIMITED FREE LIFT .....	90
CONTACTOR—FORWARD AND REVERSE (Figure 30) LAST USED ON S/N E138H03685U .....	54
CONTACTOR—FORWARD AND REVERSE “E” (Figure 31) FIRST USED ON S/N E138H03686U .....	55
CONTACTOR—FORWARD AND REVERSE “EE” (Figure 32) FIRST USED ON S/N E138H03686U .....	56
CONTACTOR—LIFT (Figure 33) .....	57
CONTACTOR—MAIN (Figure 29) .....	53
CONTACTOR PANEL “E” (Figure 24) .....	44
CONTACTOR PANEL “E” (Figure 25) .....	46

**Thanks very much for your reading,  
Want to get more information,  
Please click here, Then get the complete  
manual**

**JustClickHere** 

**NOTE:**

**If there is no response to click on the link above,  
please download the PDF document first, and then  
click on it.**

**Have any questions please write to me:  
[admin@servicemanualperfect.com](mailto:admin@servicemanualperfect.com)**

## TABLE OF CONTENTS

DESCRIPTION	PAGE NO.
CONTACTOR PANEL "EE" (Figure 26) .....	48
CONTACTOR PANEL "EE" (Figure 27) .....	50
CONTACTOR-POWER STEER (Figure 28) .....	52
CONTROL HANDLE INSTALLATION (Figure 35) (MULTI-FUNCTION WITH SEPARATE LEVERS) .....	59
CONTROL HANDLE INSTALLATION (Figure 36) (MULTI-FUNCTION WITH OMNITROL LEVER) .....	60
CYLINDER INSTALLATION (Figure 60) THREE STAGE (FFL) FULL FREE LIFT .....	108
CYLINDER INSTALLATION (Figure 53) TWO STAGE (LFL) LIMITED FREE LIFT .....	92
CYLINDER-INTEGRAL SIDESHIFTER (Figure 72) 24 INCH AND 42 INCH REACH .....	129
CYLINDER-REACH (Figure 70) 24 INCH AND 42 INCH REACH .....	127
CYLINDER-SIDESHIFTER (Figure 76) HANG-ON .....	137
CYLINDER-TILT (Figure 71) .....	128
DC/DC CONVERTER (Figure 86) .....	148
DRIVE-MASTER (Figure 5) .....	12
DRIVE UNIT (Figure 7) N30XMR, N40XMR, N25XMDR, N50XMA 14.5:1 GEAR RATIO .....	16
DRIVE UNIT (Figure 8) N45XMR, N30XMDR 22.8:1 GEAR RATIO .....	18
ELECTRICAL ARRANGEMENT (Figure 23) .....	42
ELECTRICAL COMPONENTS (Figure 34) INSTRUMENT DISPLAY PANEL .....	58
FORKS (Figure 77) HOOK TYPE 1-1/2 4 INCH (40MM 100MM) .....	138
FORKS (Figure 78) SHAFT TYPE 1-3/4 4 INCH (45MM 100MM) .....	138

---

**TABLE OF CONTENTS**

<b>DESCRIPTION</b>	<b>PAGE NO.</b>
FREE LIFT CYLINDER (Figure 62) THREE STAGE (FFL) FULL FREE LIFT .....	112
GUARD-OPERATOR (Figure 3) FIRST USED ON S/N E138H0288V .....	7
GUARD-OPERATOR (Figure 2) LAST USED ON S/N E138H0287V .....	6
HANG-ON SIDESHIFTER (Figure 75) N50XMA .....	136
HEADER HOSE (Figure 57) THREE STAGE (FFL) FULL FREE LIFT .....	98
HEADER HOSE (Figure 73) TWO STAGE (LFL) LIMITED FREE LIFT N50XMA .....	132
HEADER HOSE (Figure 74) THREE STAGE (FFL) FULL FREE LIFT N50XMA .....	134
HOOD/COVERS (Figure 1) .....	2
HYDRAULIC CONTROL VALVE (Figure 43) .....	72
HYDRAULIC CONTROL VALVE AND FITTINGS (Figure 42) .....	70
HYDRAULIC SYSTEM (Figure 41) .....	68
LABELS AND PAINT (Figure 4) .....	8
LEVER-SEPARATE (Figure 38) .....	63
LIFT (Figure 51) TWO STAGE (LFL) LIMITED FREE LIFT .....	88
LIFT LIMIT SWITCH (Figure 55) TWO STAGE (LFL) LIMITED FREE LIFT .....	94
LIFT LIMIT SWITCH (Figure 63) THREE STAGE (FFL) FULL FREE LIFT .....	114
LIGHTS (Figure 81) .....	140
MAIN-FREE LIFT (Figure 58) THREE STAGE (FFL) FULL FREE LIFT .....	102
MAIN LIFT CYLINDER (Figure 61) THREE STAGE (FFL) FULL FREE LIFT .....	110

## TABLE OF CONTENTS

DESCRIPTION	PAGE NO.
MAIN LIFT CYLINDER (Figure 54) TWO STAGE (LFL) LIMITED FREE LIFT .....	93
MAST-OUTER AND INNER (Figure 50) TWO STAGE (LFL) LIMITED FREE LIFT .....	86
MAST-OUTER, INTERMEDIATE AND INNER (Figure 56) THREE STAGE (FFL) FULL FREE LIFT .....	96
MASTER CYLINDER (Figure 22) .....	39
MOTOR-HYDRAULIC (Figure 49) FIRST USED ON S/N E138H02245U .....	82
MOTOR-HYDRAULIC (Figure 48) LAST USED ON S/N E138H02244U .....	80
MOTOR-STEER (Figure 12) .....	26
MOTOR-STEER/AUXILIARY (Figure 15) "EE" CONSTRUCTION .....	29
MOTOR-STEER/AUXILIARY (Figure 14) STANDARD "E" CONSTRUCTION .....	28
MOTOR-TRACTION (Figure 9) .....	20
MULTI-FUNCTION CONTROL HANDLE (Figure 37) (USED WITH SEPARATE CONTROL LEVERS) .....	61
MULTI-FUNCTION CONTROL HANDLE (Figure 39) (WITH OMNITROL LEVER) .....	64
OPERATOR LIGHT AND FAN (Figure 82) .....	142
POWER STEER ARRANGEMENT (Figure 10) .....	22
PUMP AND MOTOR-HYDRAULIC (Figure 46) .....	78
PUMP AND MOTOR-STEER/AUXILIARY (Figure 13) .....	27
PUMP-HYDRAULIC (Figure 47) .....	79
PUMP-STEER/AUXILIARY (Figure 16) LAST USED ON S/N E138N02639U .....	30



---

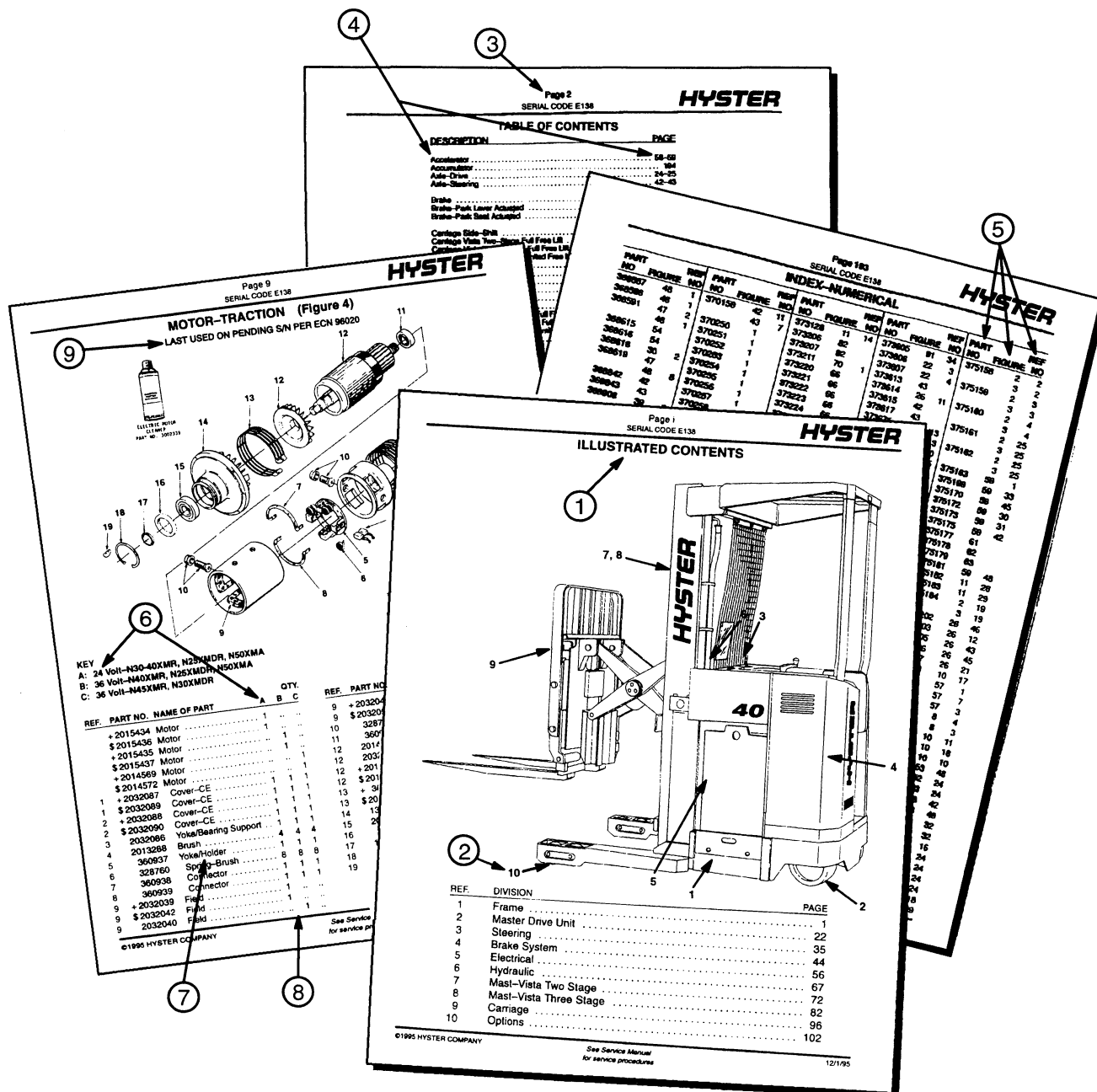
**TABLE OF CONTENTS**

<b>DESCRIPTION</b>	<b>PAGE NO.</b>
PUMP-STEER/AUXILIARY (Figure 17) FIRST USED ON S/N E138N02640U .....	31
SINGLE LOAD WHEEL (Figure 84) .....	145
SLAVE CYLINDER (Figure 20) .....	37
STEER CONTROL UNIT (Figure 11) .....	24
TANDEM LOAD WHEEL (Figure 83) .....	144
TANK-HYDRAULIC (Figure 45) FIRST USED ON S/N E138H02886V .....	76
TANK-HYDRAULIC (Figure 44) LAST USED ON S/N E138H02885V .....	74

## HOW TO USE THE ILLUSTRATED PARTS MANUAL

This Parts manual describes and illustrates assemblies, subassemblies and detail parts needed for service replacement.

The different constructions are indicated by keys, symbols and footnotes.



**WHEN THE PART NUMBER AND THE NEXT HIGHER ASSEMBLY IS NOT KNOWN:**

1. USE: Determine the function and application of the part required. Turn to the Illustrated Contents page immediately behind the front cover, and select the most appropriate area.
2. Use the Section Index to determine the assembly which would normally contain the part required. Then locate the part on the assembly breakdown page.

**WHEN THE PART NUMBER IS NOT KNOWN AND THE NEXT HIGHER ASSEMBLY IS KNOWN:**

3. Determine the assembly the required part is used on. Turn to the Table of Contents page immediately following the Illustrated Contents.
4. Locate the assembly the required part is used on and turn to the page indicated for that assembly. Proceed then to locate the part on the assembly breakdown page.

**WHEN THE PART NUMBER IS KNOWN:**

5. Use the Numerical Index to find the part number. Turn to the Figure listed and locate the part as indicated by the reference number.

**GENERAL:**

The Assembly Breakdowns include part numbers, description, quantities required, keys and footnotes to help in selecting the correct parts.

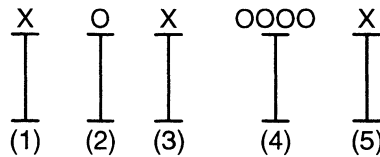
6. Keys are used to show effective serial numbers for two or more similar assemblies, RH and LH assembly parts, etc. Select the appropriate key, "A", "B", "C", or "D" and the corresponding quantity column to find the required parts.
7. Indented descriptions under "Name of Part" are used to indicate subparts of assemblies. A major assembly is not indented. Parts under the first, second, or third indent are sub-parts of the major assembly shown above them.
8. Quantities shown are for one assembly. Note that two assemblies are shown, but the quantities of the subparts are indicated as three and three. This means three per assembly.
9. Engineering Change Notice (ECN) numbers for pending serial numbers are shown to allow for the inclusion of the most current parts information. Contact your local Dealer for Hyster Lift Trucks for serial number information listed by ECN number.

**ORDERING PARTS:**

When ordering replacement parts, give the unit serial number, part number, name of part and quantity required.

For any further information on parts, service, or ordering, consult your local Dealer for Hyster Lift Trucks.

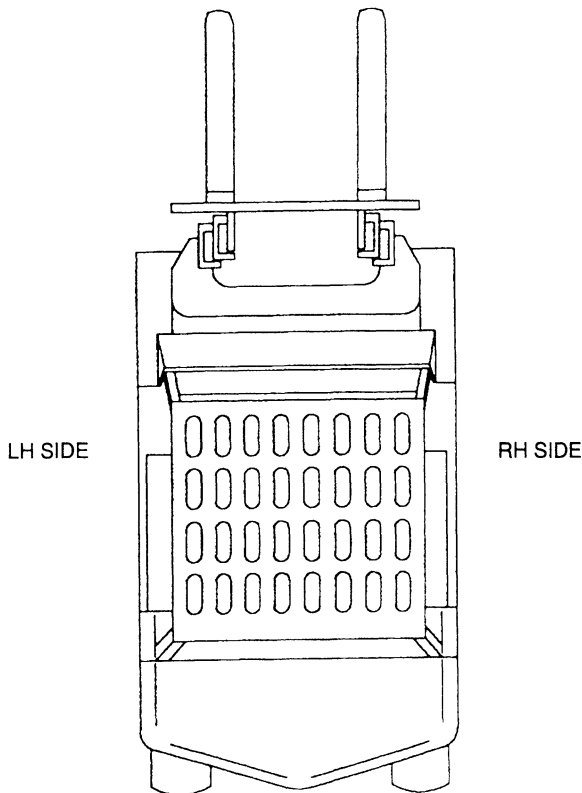
## UNIT IDENTIFICATION UNIT S/N



- (1) & (2) The first letter and number denote the design series and model of the unit.
- (3) The second letter denotes the Plant at which the unit was manufactured.
- (4) The number series denotes the serial number of the unit.
- (5) The final letter denotes the year of manufacture starting with "A" in 1957 and 1980. The letters "I", "O", and "Q" will not be used.

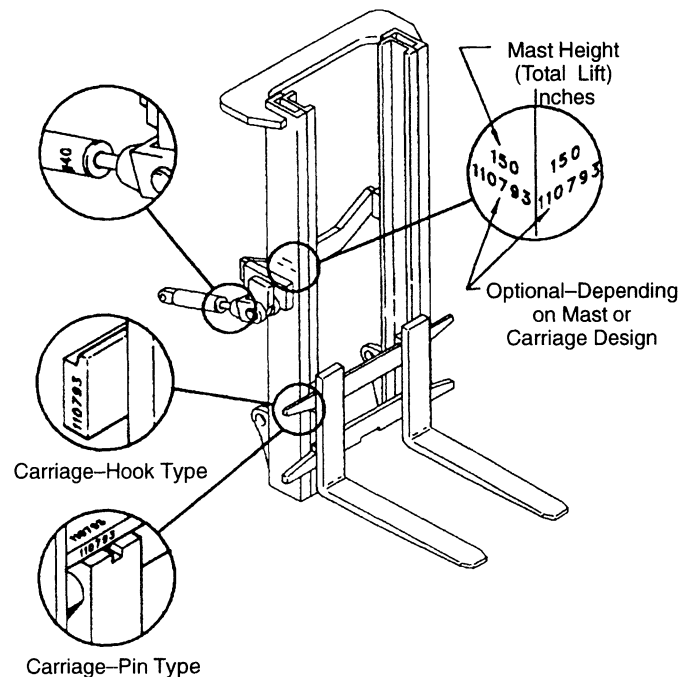
For pending serial numbers contact your local Hyster Dealer.

Parts referred to in this book as right or left hand parts are in accordance with the illustration below.



## LIFT EQUIPMENT IDENTIFICATION

1. Mast group numbers and total lift heights are stamped on the right hand outer mast approximately four feet from the bottom of the fork. The group numbers include the inner and outer masts, lift cylinder, lift chain and bleeder hoses or pipes.
2. The carriage and tilt cylinder numbers are located as shown. Lift cylinder numbers are stamped on the cylinder shell near the bleeder screw or on the chain anchor. Fork part number, capacity rating, plant code letter and date of manufacture are stamped approximately six inches below the top RH side of the forks. Always refer to these group and part numbers when ordering service parts.



**PUBLICATIONS**

Every new lift truck is provided with at least three publications. These publications are the PARTS MANUAL, the OPERATING MANUAL, and the section of the SERVICE MANUAL called Periodic Maintenance.

The OPERATING MANUAL must always be available on every lift truck. This manual has information that the operator must know for inspection and operation of the lift truck. The section Periodic Maintenance has a

recommended schedule of service intervals and the procedures for servicing the lift truck.

These manuals, other publications and programs are available from your Dealer for Hyster Lift Trucks to help you operate and maintain your lift truck professionally. See the list that follows for reference to items for lift trucks in this PARTS MANUAL.

**PUBLICATION****HYSTER PART NUMBER****Operating Manual**

English (U.S.) ..... 897703

**Service Manual (Complete)**

Frame (100 SRM 604) ..... 897847  
DC Motor Maintenance (620 SRM 294) ..... 897076  
Drive Unit (630 SRM 613) ..... 897861  
Steering System (1600 SRM 605) ..... 897848  
Steering Control Unit (1600 SRM 54) ..... 910076  
Brake System (1800 SRM 606) ..... 897849  
Hydraulic System (2000 SRM 607) ..... 897850  
Tilt Cylinders (2100 SRM 103) ..... 910102  
Traction Motor Controller (2200 SRM 608) ..... 897851  
Electrical System (2200 SRM 609) ..... 897852  
Industrial Battery (2240 SRM 1) ..... 899648  
Mast Description, 2 and 3 Stage (4000 SRM 521) ..... 897506  
Mast Repairs, 2 and 3 Stage (4000 SRM 522) ..... 897507  
Periodic Maintenance (8000 SRM 578) ..... 897704  
Diagrams (8000 SRM 579) ..... 897706  
Capacities and Specifications (8000 SRM 610) ..... 897853  
Inch (SAE) and Metric Fasteners (8000 SRM 231) ..... 910442

**Parts Manual ..... 897523****Operator Training Kit Complete**

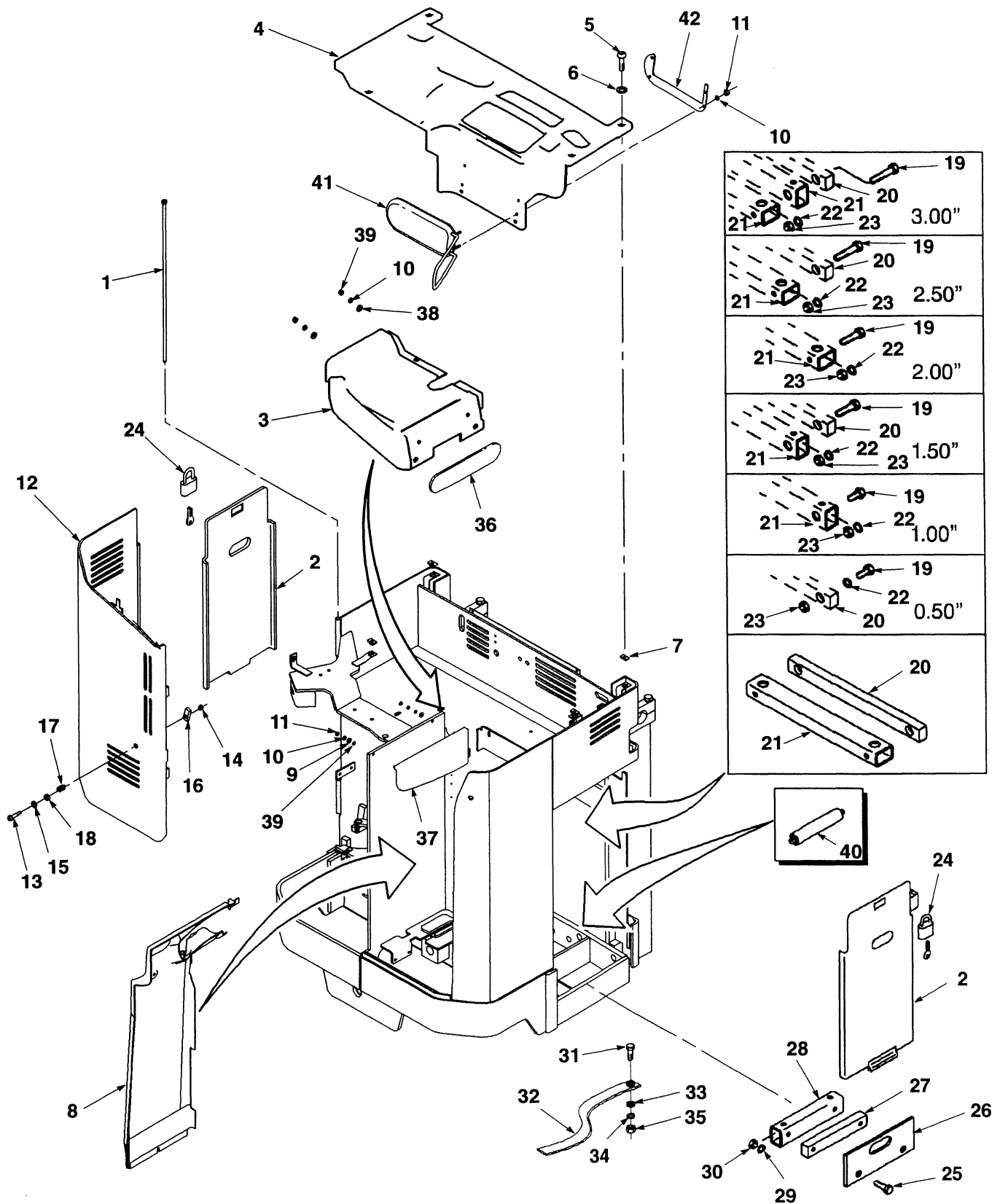
Slide Format with Carry Case ..... 599628  
1/2" VHS Format with Carry Case ..... 852800  
"Safety is an Attitude" (1/2" VHS) ..... 852690  
"Safety Rules" Playing Cards ..... 852695

---

**FRAME**

<b>DESCRIPTION</b>	<b>PAGE NO.</b>
HOOD/COVERS (Figure 1) .....	2
GUARD-OPERATOR (Figure 3) FIRST USED ON S/N E138H0288V .....	7
GUARD-OPERATOR (Figure 2) LAST USED ON S/N E138H0287V .....	6
LABELS AND PAINT (Figure 4) .....	8

## HOOD/COVERS (Figure 1)



## HOOD/COVERS

### KEY

A: N30-40XMR, N25XMDR, N50XMA

B: N45XMR, N30XMDR

REF.	PART NO.	NAME OF PART	QTY.		REF.	PART NO.	NAME OF PART	QTY.	
			A	B				A	B
1	2310970	Pin-Hinge .....	1	1	23	+	Nut .....	..	..
2	#*	Cover .....	2	2	24	# 2305060	Padlock .....	2	2
3	2015032	Drive Unit Cover .....	1	..	25	%	Screw .....	..	..
3	2015033	Drive Unit Cover .....	..	1	26	*	Plate .....	2	2
4	*	Compartment Cover .....	1	1	27	%	Spacer .....	..	..
5	17178	Screw .....	11	11	28	%	Tube .....	..	..
6	18515	Washer .....	10	10	29	%	Lockwasher .....	..	..
7	249668	Clip Nut .....	11	11	30	%	Nut .....	..	..
8	1454232	Side Cover .....	1	..	31	# 18497	Screw .....	1	1
8	1454233	Side Cover .....	..	1	32	# 216895	Strap .....	1	1
9	197068	Washer .....	2	2	33	# 18515	Washer .....	2	2
10	15154	Lockwasher .....	8	8	34	# 15155	Lockwasher .....	1	1
11	15054	Nut .....	6	6	35	# 15055	Nut .....	1	1
12	2013697	Door .....	1	..	36	2015341	Pad .....	1	1
12	2013754	Door .....	..	1	37	2015342	Pad .....	1	1
13	2311526	Screw .....	1	1	38	15127	Washer .....	2	2
14	145641	Locknut .....	1	1	39	15000	Jam Nut .....	4	4
15	221767	Washer .....	1	1	40	*	Roller .....	..	..
16	2310485	Latch .....	1	1	41	2032440	Control Shield .....	1	1
17	2303971	Spring .....	1	1	42	2032444	Plate .....	1	1
18	2310742	Tube .....	1	1					
19	+	Screw .....	2	2		#	"EE" Construction		
20	+	Spacer .....	..	..		*	Battery Compartment Chart		
21	+	Tube .....	..	..		+	Battery Spacer Front to Back Chart		
22	+	Lockwasher .....	..	..		%	Battery Spacer Side to Side Chart		



## HOOD/COVERS

### BATTERY COMPARTMENT

REF. NO.	NAME OF PART 1 2 3 4	BATTERY BOX SIZE				
		12.50 in	14.60 in	16.60 in	18.75 in	21.12 in
2	Cover	2305895	2303689	2303359	—	—
4	Compartment Cover	2014964	2014965	2014966	2014967	2014968
26	Plate	2306123	2303803	2302926	2309424	2302481
42	Roller	@2303911	@368022	&2302952	&2305145	&2302495

@ Requires 5 Rollers

& Requires 6 Rollers

### BATTERY SPACER FRONT TO BACK

REF. NO.	PART NO.	NAME OF PART 1 2 3 4	QUANTITY—TOTAL SPACER REQUIRED					
			0.5 in	1.00 in	1.50 in	2.00 in	2.50 in	3.00 in
19	18497	Screw	2	2	—	—	—	—
19	18508	Screw	—	—	2	2	—	—
19	18513	Screw	—	—	—	—	2	2
20	2306205	Spacer	1	—	1	—	1	—
21	2306243	Tube	—	1	1	1	1	2
22	15155	Lockwasher	2	2	2	2	2	2
23	15055	Nut	2	2	2	2	2	2

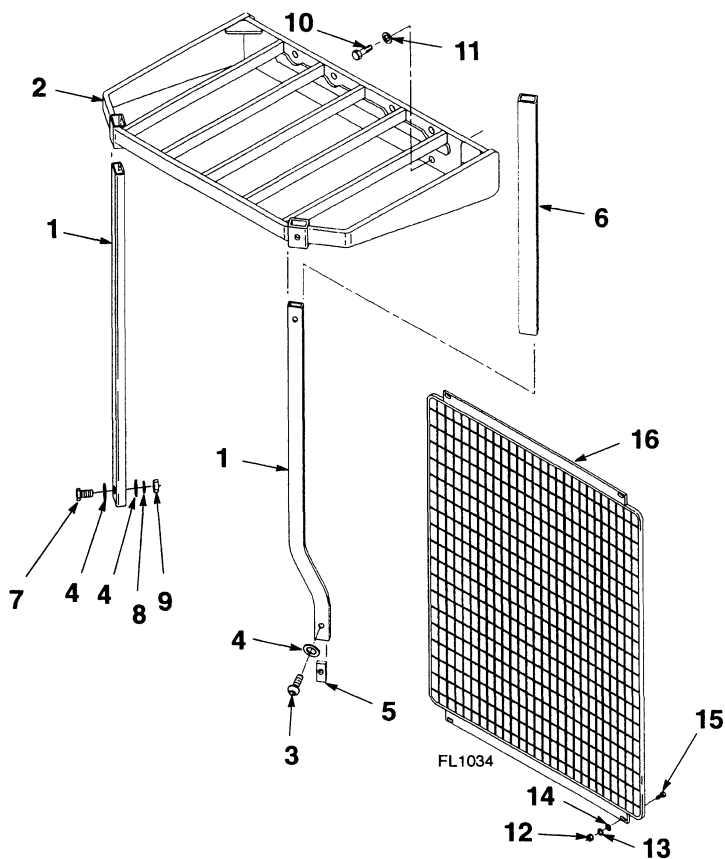
### BATTERY SPACER SIDE TO SIDE

REF. NO.	PART NO.	NAME OF PART 1 2 3 4	QUANTITY—TOTAL SPACER REQUIRED					
			0.5 in	1.00 in	1.50 in	2.00 in	2.50 in	3.00 in
25	16836	Screw	2	4	4	4	2	—
25	18498	Screw	—	—	—	—	—	4
27	2308771	Spacer	1	2	1	—	1	2
28	2307752	Tube	—	—	1	2	2	2
29	15155	Lockwasher	2	4	4	4	4	4
30	15055	Nut	2	4	4	4	4	4

## This image shows a single sheet of white paper with horizontal ruling lines. The lines are evenly spaced and run across the width of the page. There are no margins, text, or other markings on the paper.

## GUARD-OPERATOR (Figure 2)

LAST USED ON S/N E138H0287V



REF. NO.	NAME OF PART 1 2 3 4	LIFT HEIGHT TO TOP OF FORKS		
		89 in	95 inch, 102 inch AND ABOVE	101 in
1	Post	2014678	2014684	2014689
16	Guard	2302237	2305603	2309623

REF.	PART NO.	NAME OF PART	QTY.	REF.	PART NO.	NAME OF PART	QTY.
1	*	Post	2	11	221777	Washer	6
2	\$	2013547 Guard-Overhead	1	12	15054	Nut	4
2	%	2013548 Guard-Overhead	1	13	15154	Lockwasher	4
2	#	2013549 Guard-Overhead	1	14	15127	Washer	4
2	&	2013769 Guard-Overhead	1	15	18460	Screw	4
2	@	2013550 Guard-Overhead	1	16	*	Guard	1
2	!	2013551 Guard-Overhead	1				
3		18744 Screw	1				
4		221775 Washer	3				
5		2014693 Bar-Mounting	1				
6		2031025 Guard-Leg Cushion	1				
7		220789 Screw	2				
8		15159 Lockwasher	2				
9		15059 Nut	2				
10		168054 Screw	6				

\* Table Above

\$ N40 12.50 Inch Battery Compartment  
% N40 14.60 Inch Battery Compartment  
# N40 16.60 Inch Battery Compartment  
& N45 16.60 Inch Battery Compartment  
@ N45 18.75 Inch Battery Compartment  
! N45 21.12 Inch Battery Compartment