

PARTS MANUAL

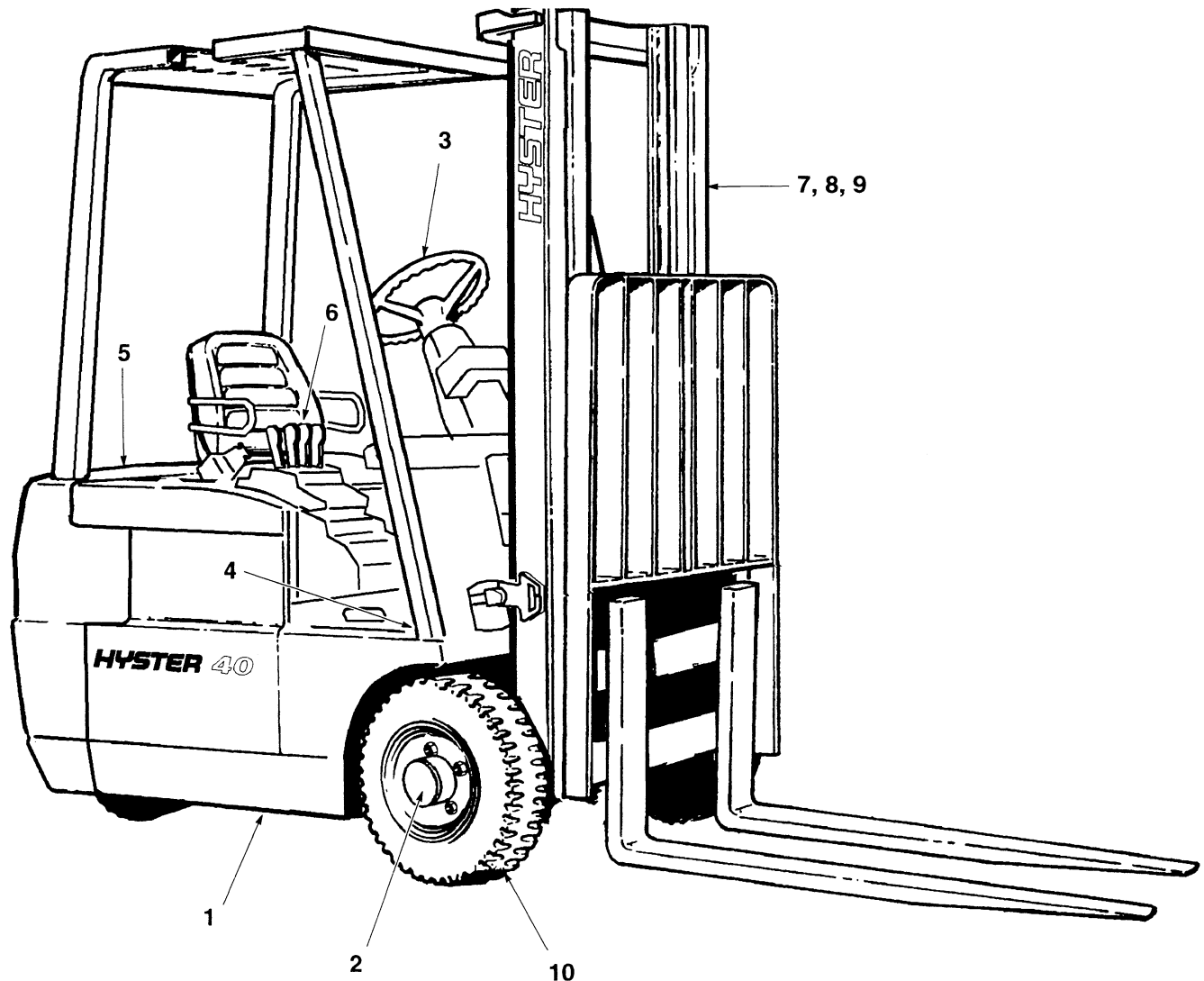
**ELECTRIC
J30-35-40XMT**

(C160)

CUSTOMER EDITION

HYSTER

ILLUSTRATED CONTENTS



REF.	DIVISION	PAGE
1	Frame	1
2	Drive Axle	15
3	Steering	27
4	Brake/Accelerator	37
5	Electrical	49
6	Hydraulic	75
7	Mast—Two-Stage (LFL) Limited Free Lift	91
8	Mast—Three-Stage (FFL) Full Free Lift	107
9	Mast—Two-Stage (FFL) Full Free Lift	127
10	Optional Equipment	147
11	Numerical Index	183

TABLE OF CONTENTS

DESCRIPTION	PAGE NO.
ACCELERATOR PEDAL (Figure 20)	38
AXLE-STEERING (Figure 14)	30
BACK-UP ALARM (Figure 88)	156
BATTERY ROLLER AND RETAINER (Figure 101)	178
BRAKE-BACK-UP LIGHT (Figure 100)	176
BRAKE PEDAL LINKAGE (Figure 21)	40
CALIPER (Figure 25)	47
CARRIAGE (Figure 65) THREE STAGE (FFL) FULL FREE LIFT MAST	118
CARRIAGE (Figure 76) TWO STAGE (FFL) FULL FREE LIFT MAST	138
CARRIAGE (Figure 54) TWO STAGE (LFL) LIMITED FREE LIFT MAST	98
CONNECTOR-BATTERY (Figure 43)	73
CONTACTOR PANEL "EE" (Figure 96) SCR HYDRAULIC	168
CONTACTOR PANEL "EE" (Figure 89) SINGLE SPEED PUMP	158
CONTACTOR PANEL-FIELD WEAKENING (Figure 97)	170
CONTACTOR PANEL-LIFT PUMP/POWER STEER (Figure 31) CONTACTOR HYDRAULICS	60
CONTACTOR PANEL-LIFT PUMP/POWER STEER (Figure 32) SCR HYDRAULICS	61
CONTACTOR PANEL-TRACTION (Figure 30)	58
CONTACTOR PANEL-TRACTION "EE" (Figure 92)	162
CONTACTOR-AC ARMATURE (Figure 33)	62
CONTACTOR-AC ARMATURE "EE" (Figure 93)	164
CONTACTOR-FIELD WEAKENING (Figure 98)	171
CONTACTOR-FORWARD/REVERSE (Figure 34)	63
CONTACTOR-FORWARD/REVERSE "EE" (Figure 94)	165

TABLE OF CONTENTS

DESCRIPTION	PAGE NO.
CONTACTOR-POWER STEER (Figure 36)	65
CONTACTOR-POWER STEER "EE" (Figure 91)	161
CONTACTOR-PUMP (Figure 37) CONTACTOR HYDRAULICS	66
CONTACTOR-PUMP (Figure 38) SCR HYDRAULICS	67
CONTACTOR-PUMP "EE" (Figure 90)	160
CONTACTOR-1A (Figure 35)	64
CONTACTOR-1A/SCR PUMP "EE" (Figure 95)	166
CONTROL VALVE (Figure 46)	80
COUNTERWEIGHT (Figure 3)	5
COWL ELECTRICAL (Figure 39) HORN/ACCELERATOR SWITCH	68
CYLINDER (Figure 53) TWO STAGE (LFL) LIMITED FREE LIFT MAST	96
DC-DC CONVERTOR (Figure 104)	182
DRIVE UNIT (Figure 7) (Figure 8)	16, 17
ELECTRICAL ARRANGEMENT (Figure 26) CONTACTOR HYDRAULICS	50
ELECTRICAL ARRANGEMENT (Figure 27) SCR HYDRAULICS	52
ELECTRICAL COMPONENTS (Figure 98) PARK BRAKE	172
FORK (Figure 70) THREE STAGE (FFL) FULL FREE LIFT MAST	126
FORK (Figure 81) TWO STAGE (FFL) FULL FREE LIFT MAST	146
FORK (Figure 59) TWO STAGE (LFL) LIMITED FREE LIFT MAST	106
FREE LIFT (Figure 62) THREE STAGE (FFL) FULL FREE LIFT MAST	112

**Thanks very much for your reading,
Want to get more information,
Please click here, Then get the complete
manual**

JustClickHere 

NOTE:

**If there is no response to click on the link above,
please download the PDF document first, and then
click on it.**

**Have any questions please write to me:
admin@servicemanualperfect.com**

TABLE OF CONTENTS

DESCRIPTION	PAGE NO.
FREE LIFT (Figure 73) TWO STAGE (FFL) FULL FREE LIFT MAST	132
FREE LIFT CYLINDER (Figure 64) THREE STAGE (FFL) FULL FREE LIFT MAST	116
FREE LIFT CYLINDER (Figure 75) TWO STAGE (FFL) FULL FREE LIFT MAST	136
FRONT DRIVING/REAR WORK LIGHTS (Figure 86)	152
HAND PUMP (Figure 15)	32
HEADER HOSE (Figure 69) THREE STAGE (FFL) FULL FREE LIFT MAST	124
HEADER HOSE (Figure 80) TWO STAGE (FFL) FULL FREE LIFT MAST	144
HEADER HOSE (Figure 58) TWO STAGE (LFL) LIMITED FREE LIFT MAST	104
HEADER HOSE CONNECTION GROUP (Figure 68) THREE STAGE (FFL) FULL FREE LIFT MAST	122
HEADER HOSE CONNECTION GROUP (Figure 79) TWO STAGE (FFL) FULL FREE LIFT MAST	142
HEADER HOSE CONNECTION GROUP (Figure 57) TWO STAGE (LFL) LIMITED FREE LIFT MAST	102
HOODS AND COVERS (Figure 1)	2
HYDRAULIC MOTOR (Figure 48)	84
HYDRAULIC PUMP (Figure 47)	83
HYDRAULIC SYSTEM (Figure 50)	88
INNER/INTERMEDIATE/OUTER MAST (Figure 60) THREE STAGE (FFL) FULL FREE LIFT MAST	108
INNER/OUTER MAST (Figure 71) TWO STAGE (FFL) FULL FREE LIFT MAST	128
INNER/OUTER MAST (Figure 51) TWO STAGE (LFL) LIMITED FREE LIFT MAST	92
INSTRUMENT CLUSTER (Figure 41) STANDARD DISPLAY	70
INSTRUMENT PANEL (Figure 40)	69

TABLE OF CONTENTS

DESCRIPTION	PAGE NO.
LABELS AND PAINT (Figure 6)	12
LIFT (Figure 52)	
TWO STAGE (LFL) LIMITED FREE LIFT MAST	94
LOAD BACKREST EXTENSION (Figure 66)	
THREE STAGE (FFL) FULL FREE LIFT MAST	119
LOAD BACKREST EXTENSION (Figure 77)	
TWO STAGE (FFL) FULL FREE LIFT MAST	139
LOAD BACKREST EXTENSION (Figure 55)	
TWO STAGE (LFL) LIMITED FREE LIFT MAST	99
LOWER VALVE LINKAGE (Figure 45)	78
MAIN CYLINDER (Figure 63)	
THREE STAGE (FFL) FULL FREE LIFT MAST	114
MAIN CYLINDER (Figure 74)	
TWO STAGE (FFL) FULL FREE LIFT MAST	134
MAIN LIFT (Figure 61)	
THREE STAGE (FFL) FULL FREE LIFT MAST	110
MAIN LIFT (Figure 72)	
TWO STAGE (FFL) FULL FREE LIFT MAST	130
MASTER CYLINDER AND RESERVOIR (Figure 22)	42
MOTOR COOLING FAN SERVICE KIT (Figure 102)	180
OVERHEAD GUARD (Figure 2)	6
PARK BRAKE LINKAGE (Figure 23)	
FOOT OPERATED	44
PARK BRAKE OPTION (Figure 99)	
ELECTRICALLY RELEASED	174
PARKING BRAKE CALIPER (Figure 24)	46
SCR PANEL-PUMP (Figure 29)	56
SCR PANEL-TRACTION (Figure 28)	54
SEAT (Figure 4)	
NON-SUSPENSION	8
SEAT (Figure 5)	
SUSPENSION	10
SHIFT LEVER (Figure 42)	72

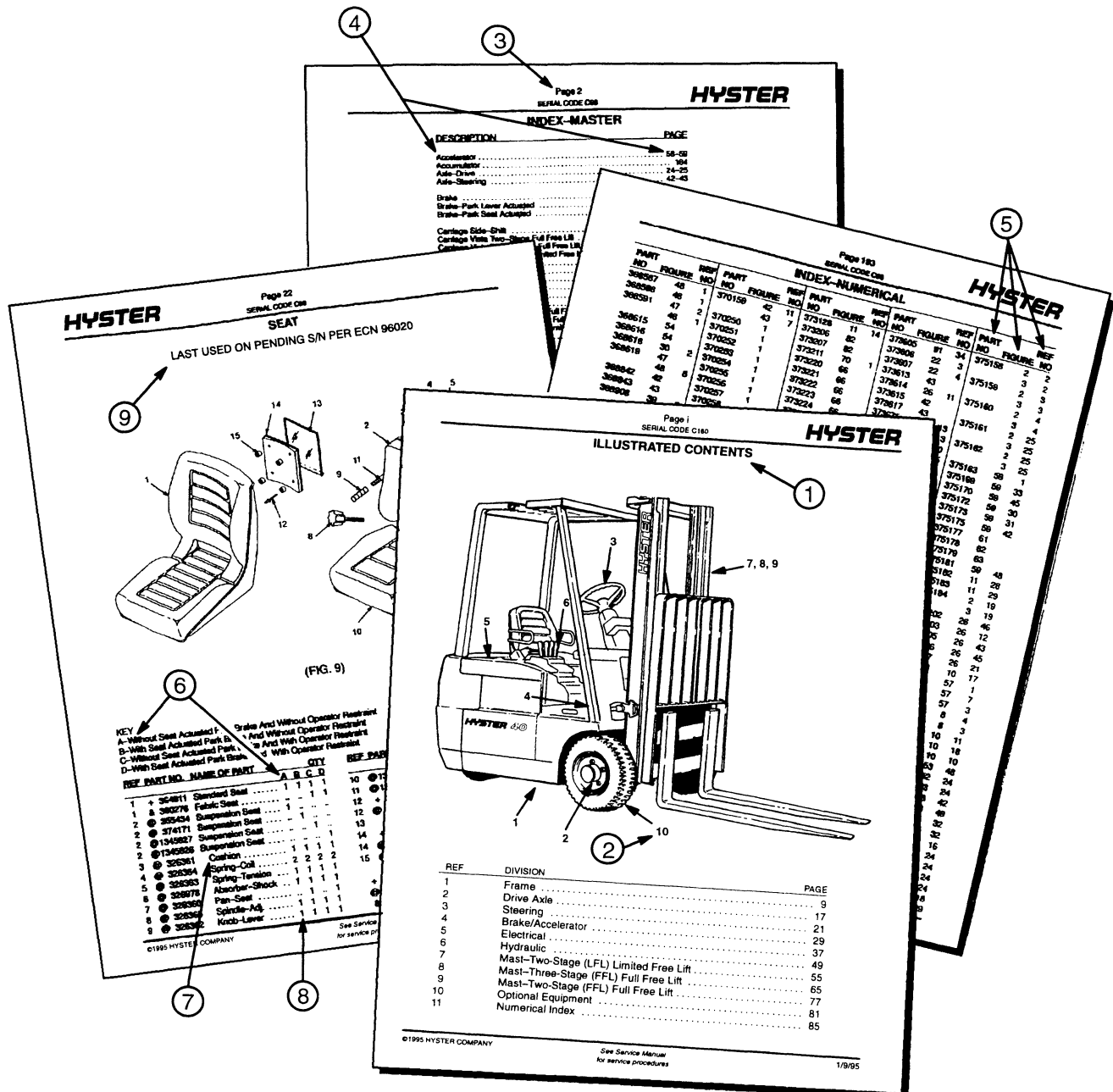
TABLE OF CONTENTS

DESCRIPTION	PAGE NO.
SIDESHIFTER (Figure 82)	148
SIDESHIFTER CYLINDER (Figure 83)	149
STEER CYLINDER (Figure 16)	33
STEER PUMP (Figure 18)	35
STEERING INTERFACE PANEL (Figure 17)	34
STEERING MOTOR (Figure 19)	36
STEERING POD (Figure 13)	28
STROBE LIGHT AND STROBE LIGHT/REAR LIGHT COMBINATION (Figure 87)	154
TILT CYLINDER (Figure 49)	86
TILT CYLINDER INSTALLATION (Figure 67) THREE STAGE (FFL) FULL FREE LIFT MAST	120
TILT CYLINDER INSTALLATION (Figure 78) TWO STAGE (FFL) FULL FREE LIFT MAST	140
TILT CYLINDER INSTALLATION (Figure 56) TWO STAGE (LFL) LIMITED FREE LIFT MAST	100
TIRE/WHEEL (Figure 84) DRIVE/STEER	150
TIRE/WHEEL (Figure 85) DRIVE/STEER	150
TRACTION MOTOR (Figure 11) (Figure 12)	22, 24
TRANSMISSION (Figure 9) (Figure 10)	18, 20
UPPER VALVE LINKAGE (Figure 44)	76

HOW TO USE THE ILLUSTRATED PARTS MANUAL

This Parts manual describes and illustrates assemblies, subassemblies and detail parts needed for service replacement.

The different constructions are indicated by keys, symbols and footnotes.



WHEN THE PART NUMBER AND THE NEXT HIGHER ASSEMBLY IS NOT KNOWN:

1. USE: Determine the function and application of the part required. Turn to the Illustrated Contents page immediately behind the front cover, and select the most appropriate area.
2. Use the Section Index to determine the assembly which would normally contain the part required. Then locate the part on the assembly breakdown page.

WHEN THE PART NUMBER IS NOT KNOWN AND THE NEXT HIGHER ASSEMBLY IS KNOWN:

3. Determine the assembly the required part is used on. Turn to the Table of Contents page immediately following the Illustrated Contents.
4. Locate the assembly the required part is used on and turn to the page indicated for that assembly. Proceed then to locate the part on the assembly breakdown page.

WHEN THE PART NUMBER IS KNOWN:

5. Use the Numerical Index to find the part number. Turn to the Figure listed and locate the part as indicated by the reference number.

GENERAL:

The Assembly Breakdowns include part numbers, description, quantities required, keys and footnotes to help in selecting the correct parts.

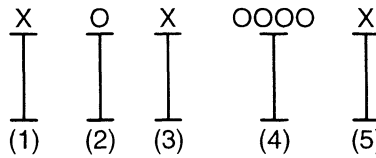
6. Keys are used to show effective serial numbers for two or more similar assemblies, RH and LH assembly parts, etc. Select the appropriate key, "A", "B", "C", or "D" and the corresponding quantity column to find the required parts.
7. Indented descriptions under "Name of Part" are used to indicate subparts of assemblies. A major assembly is not indented. Parts under the first, second, or third indent are sub-parts of the major assembly shown above them.
8. Quantities shown are for one assembly. Note that two assemblies are shown, but the quantities of the subparts are indicated as three and three. This means three per assembly.
9. Engineering Change Notice (ECN) numbers for pending serial numbers are shown to allow for the inclusion of the most current parts information. Contact your local Dealer for Hyster Lift Trucks for serial number information listed by ECN number.

ORDERING PARTS:

When ordering replacement parts, give the unit serial number, part number, name of part and quantity required.

For any further information on parts, service, or ordering, consult your local Dealer for Hyster Lift Trucks.

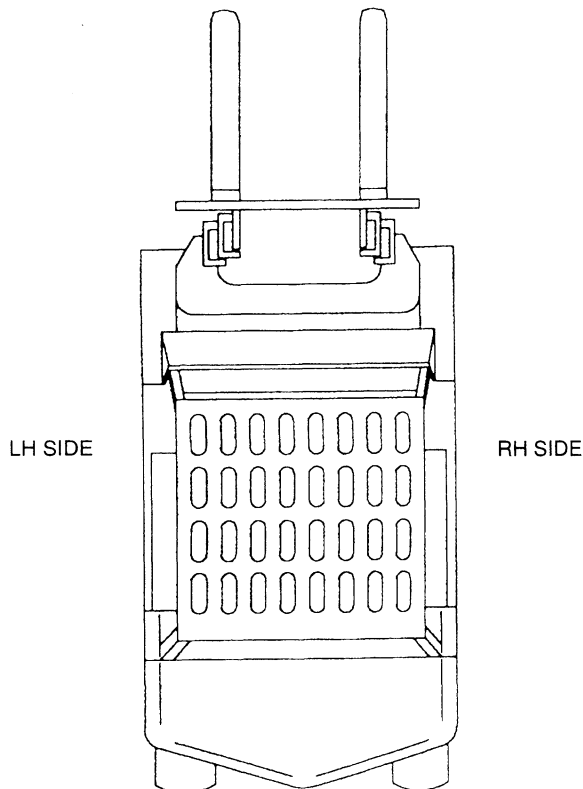
UNIT IDENTIFICATION UNIT S/N



- (1) & (2) The first letter and number denote the design series and model of the unit.
- (3) The second letter denotes the Plant at which the unit was manufactured.
- (4) The number series denotes the serial number of the unit.
- (5) The final letter denotes the year of manufacture starting with "A" in 1957 and 1980. The letters "I", "O", and "Q" will not be used.

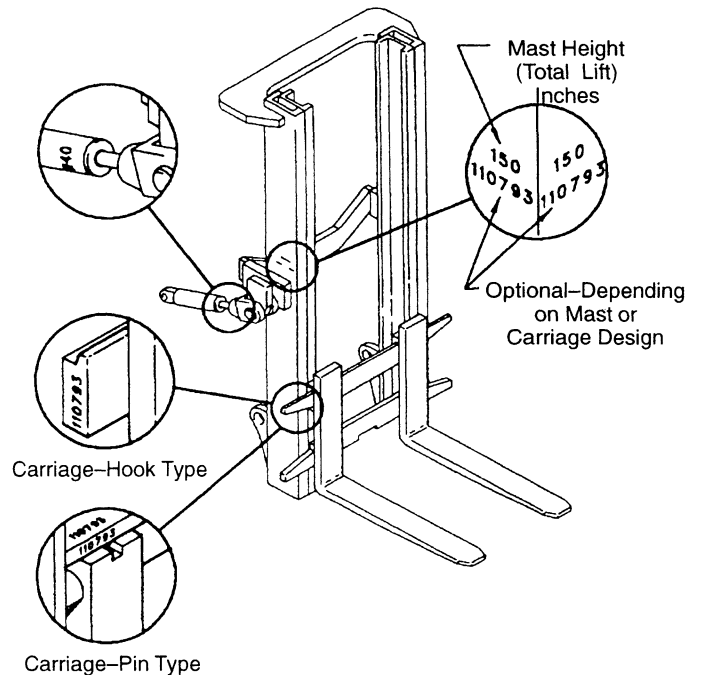
For pending serial numbers contact your local Hyster Dealer.

Parts referred to in this book as right or left hand parts are in accordance with the illustration below.



LIFT EQUIPMENT IDENTIFICATION

1. Mast group numbers and total lift heights are stamped on the right hand outer mast approximately four feet from the bottom of the fork. The group numbers include the inner and outer masts, lift cylinder, lift chain and bleeder hoses or pipes.
2. The carriage and tilt cylinder numbers are located as shown. Lift cylinder numbers are stamped on the cylinder shell near the bleeder screw or on the chain anchor. Fork part number, capacity rating, plant code letter and date of manufacture are stamped approximately six inches below the top RH side of the forks. Always refer to these group and part numbers when ordering service parts.



RECOMMENDED SPARE PARTS LIST

The following parts list is intended for use as a guide when stocking spare parts for all STANDARD truck models used under NORMAL operating conditions. For trucks that are used for special applications and/or are operated in areas of high contamination such as dust, corrosive vapors, etc., consult your nearest Authorized Hyster dealer for assistance in selecting and stocking all necessary spare parts. To determine quantities and where parts are used, refer to the numeric index in this manual.

PART DESCRIPTION	PART NO.	PART DESCRIPTION	PART NO.
C		H	
Contactor Panel-Fuse	325809	Hydraulic Motor-Brush w/BWI	2013534
Contactor Panel-Fuse	1350336	Hydraulic Motor-Brush w/o BWI	2013525
Contactor Panel-Fuse	2302712	Hydraulic System-Element	2305543
Contactor-1A-Pump-Contact-Stationary ...	388236		
Contactor-1A-Pump-Contact-Tip	388239	I	
Contactor-AC-Armature-Contact-Stat.	1330692	Instrument Panel-Key	1337197
Contactor-AC-Armature-Contact-Tip	1329522		
Contactor-Fwd./Rev.-Contact-Stationary ...	388245	P	
Contactor-Fwd./Rev.-Contact-Stationary ...	388248	Power Steer Motor-Brush Set	2310285
Contactor-Fwd./Rev.-Contact-Stationary ...	388237		
Contactor-Fwd./Rev.-Contact-Stationary ...	388246	T	
Contactor-Fwd./Rev.-Contact-Stationary ...	388247	@ Traction Motor-Brush Set-w/BWI	2013324
Contactor-Fwd./Rev.-Contact-Tip	388030	\$ Traction Motor-Brush Set-w/o BWI	2013586
Contactor-Pump-Contact-Stationary	1300945	% Traction Motor-Brush Set-w/BWI	2305203
Contactor-Pump-Contact-Tip	1300278	& Traction Motor-Brush Set-w/o BWI	2307052
Contactor-Pump-Single Speed			
Contact-Stationary	1306705	@ Last used on S/N C160H-2204	
Contactor-Pump-Single Speed		\$ Last used on S/N C160H-2219	
Contact-Stationary	1306706	% First used on S/N C160H-2205	
Contactor-Power Steer-Contact-Stat.	1329520	& First used on S/N C160H-2220	
Contactor-Power Steer-Contact-Stat.	1329521		

PUBLICATIONS

Every new lift truck is provided with at least three publications. These publications are the OPERATING MANUAL, the PERIODIC MAINTENANCE SECTION, and the DIAGRAM SECTION of the SERVICE MANUAL.

The Operating Manual must always be available on every lift truck. This manual has information that the operator must know for inspection and operation of the lift

truck. The PERIODIC MAINTENANCE SECTION has a recommended schedule of service intervals and the procedures for servicing the lift truck. The DIAGRAM SECTION includes the Electrical and Hydraulic Diagrams and Schematics for troubleshooting the lift truck.

The PARTS MANUAL must be ordered with the new lift truck or through the Hyster Dealer Parts Department.

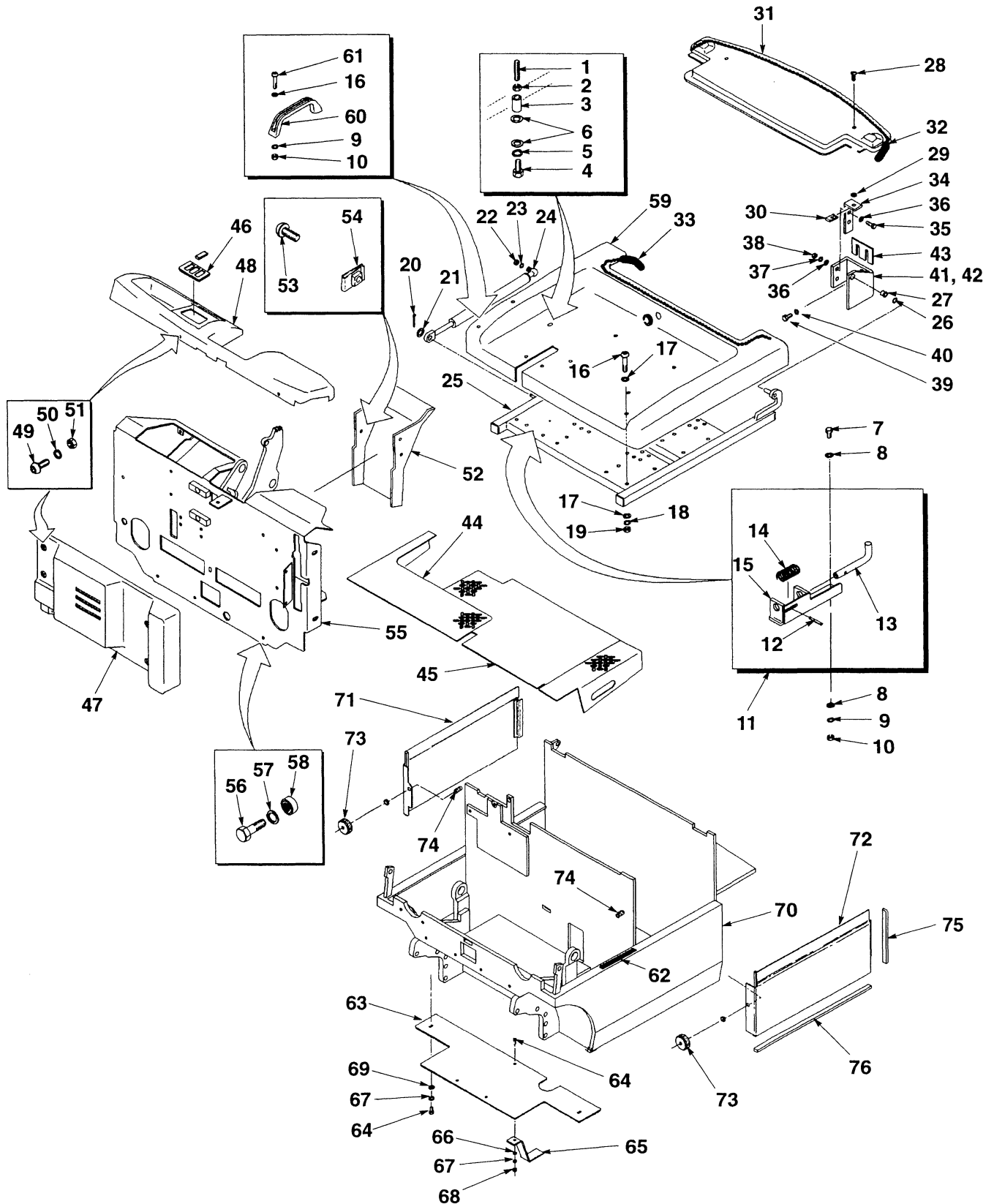
PUBLICATION	HYSTER PART NUMBER
Operating Manual	
English (U.S.)	897522
Service Manual (Complete)	897666
Frame (100 SRM 567)	897655
DC Motor Maintenance (620 SRM 294)	897076
Transaxle Assembly (1300 SRM 568)	897656
Steering System (1600 SRM 569)	897657
Steering Control Unit (1600 SRM 512)	897493
Brakes System (1800 SRM 570)	897658
Main Control Valve (2000 SRM 576)	897671
Tilt Cylinders (2100 SRM 103)	910102
EV-100LX Motor Controller (2200 SRM 460)	897409
Electrical System (2200 SRM 577)	897672
Industrial Battery (2240 SRM 1)	899648
Mast Description, Two and Three Stage (4000 SRM 521)	897506
Mast Repairs, Two and Three Stage (4000 SRM 522)	897507
Periodic Maintenance (8000 SRM 528)	897524
Diagrams (8000 SRM 529)	897525
Capacities and Specifications (8000 SRM 571)	897659
Inch (SAE) and Metric Fasteners (8000 SRM 231)	910442
Parts Manual	897523
Operator Training Program	
Operator Training Kit Complete	
Slide Format with Carry Case	599628
1/2" VHS Format with Carry Case	852800
"Safety is an Attitude" (1/2" VHS)	852690
"Safety Rules" Playing Cards	852695
Sold Alone Kit Catalog	852505

This image shows a single sheet of white paper with horizontal ruling lines. The lines are evenly spaced and run across the width of the page. There are no margins, text, or other markings on the paper.

FRAME

DESCRIPTION	PAGE NO.
COUNTERWEIGHT (Figure 3)	5
HOODS AND COVERS (Figure 1)	2
LABELS AND PAINT (Figure 6)	12
OVERHEAD GUARD (Figure 2)	6
SEAT (Figure 4) NON-SUSPENSION	8
SEAT (Figure 5) SUSPENSION	10

HOODS AND COVERS (Figure 1)



HOOD AND COVERS

KEY

A: 46 Inch Wheel Base

B: 50.8 Inch Wheel Base

C: 54.5 Inch Wheel Base

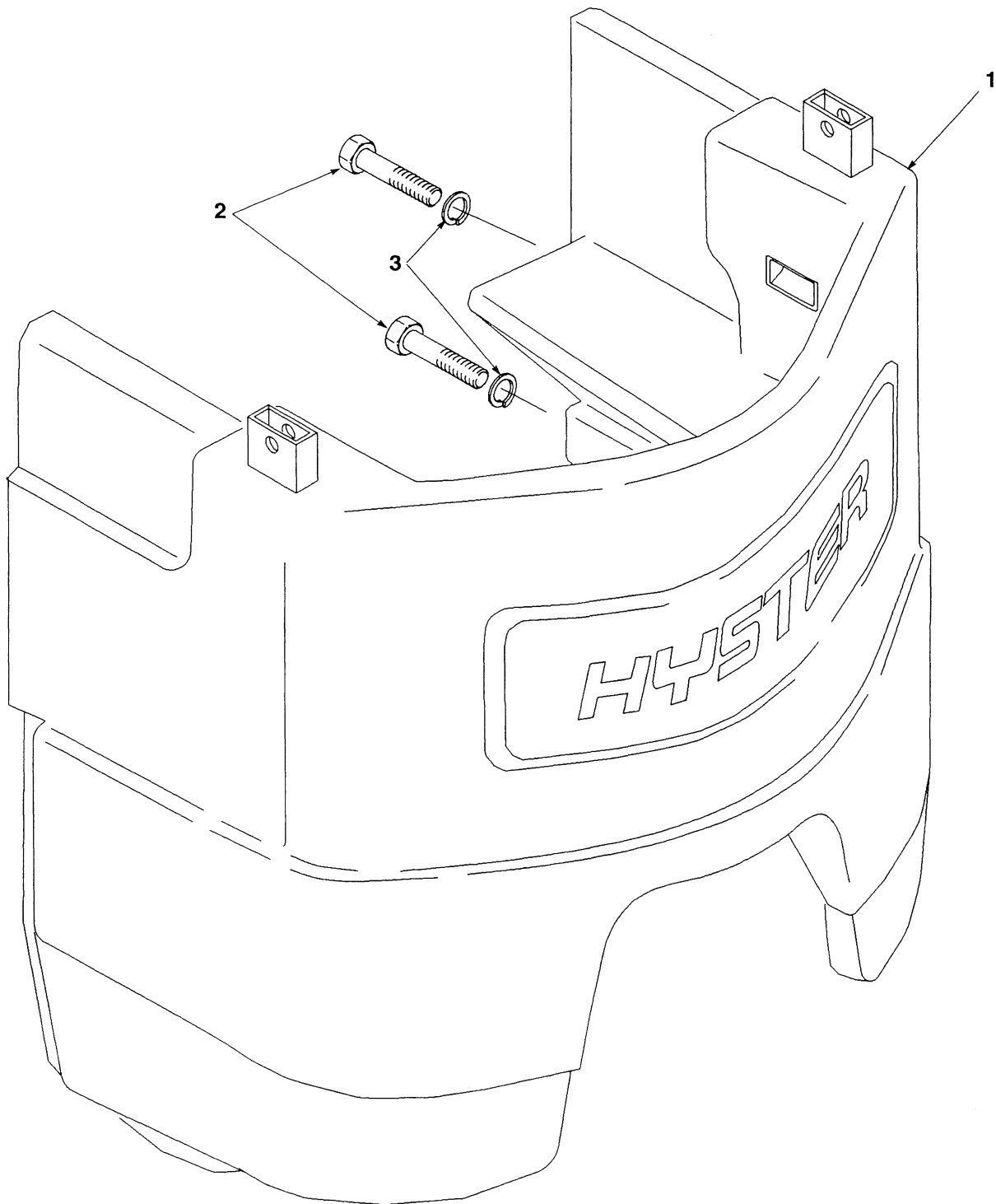
REF.	PART NO.	NAME OF PART	QTY.			REF.	PART NO.	NAME OF PART	QTY.		
			A	B	C				A	B	C
1	2309936	Stud	1	1	1	35	176640	Screw	4	4	4
2	15026	Nut	1	1	1	36	320158	Washer	8	8	8
3	2309977	Standoff	1	1	1	37	292681	Lockwasher	4	4	4
4	16634	Screw	1	1	1	38	239503	Nut	4	4	4
5	15156	Lockwasher	1	1	1	39	246001	Screw	4	4	4
6	15176	Washer	2	2	2	40	292683	Lockwasher	4	4	4
7	136749	Screw	2	2	2	41	2307374	Hinge-L.H.	1	1	1
8	320157	Washer	4	4	4	42	2310643	Hinge-R.H.	1	1	1
9	292681	Lockwasher	4	4	4	43	2311499	Shim	AR	AR	AR
10	239503	Nut	4	4	4	44	2013838	Floorplate	1	1	1
11	2311028	Latch	1	1	1	45	2013839	Floorplate	1	1	1
12	19981	Pin-Spring	1	1	1	46	376947	Frame	1	1	1
13	2305068	Pin-Latch	1	1	1	47	2307691	Front Cover	1	1	1
14	2307799	Spring	1	1	1	48	2013355	Top Cover	1	1	1
15	2305209	Guide	1	1	1	49	302047	Screw	8	8	8
16	296167	Capscrew	6	6	6	50	320156	Washer	8	8	8
17	320158	Washer	14	14	14	51	136687	Nut	8	8	8
18	292681	Lockwasher	6	6	6	52	2302098	Column Cover	1	1	1
19	239503	Nut	6	6	6	53	302048	Screw	3	3	3
20	15223	Cotter Pin	1	1	1	54	325182	Nut	3	3	3
21	320159	Washer	6	6	6	55	2013206	Cowl	1	1	1
22	239503	Nut	1	1	1	56	292515	Capscrew	3	3	3
23	292681	Lockwasher	1	1	1	57	320159	Washer	3	3	3
24	2302835	Cylinder	1	58	2307638	Nut	3	3	3
24	2311273	Cylinder	1	1	59	2013130	Hood	1
25	2309395	Frame	1	59	2032084	Hood	1	..
25	\$ 2035306	Frame	1	59	2013131	Hood	1
25	2302843	Frame	1	..	60	362030	Handle	1	1	1
25	\$ 2035307	Frame	1	..	61	287816	Screw	2	2	2
25	2309756	Frame	1	62	2309317	Pad	1	1	1
25	\$ 2035308	Frame	1	63	* 2311313	Drip Pan	1	1	1
26	320161	Washer	2	2	2	64	* 136681	Capscrew	3	3	3
27	2310972	Bushing	2	2	2	65	* 216895	Static Strap	1	1	1
28	2308511	Screw	2	2	2	66	* 221733	Washer	1	1	1
29	2310001	Retainer	2	2	2	67	* 292681	Lockwasher	3	3	3
30	2309640	Receptacle	2	2	2	68	* 239503	Nut	1	1	1
31	2013232	Rear Cover	1	69	* 320158	Washer	2	2	2
31	2013191	Rear Cover	1	1	70	2013122	Frame (3000 Lbs.)	1
32	2013312	Seal-Rear Cover	1	1	1	70	2013123	Frame (3000 Lbs.)	1	..
33	2309562	Seal-Hood	1	70	2013124	Frame (3500 Lbs.)	1
33	2311375	Seal-Hood	1	1	70	2013125	Frame (4000 Lbs.)	1
34	2303881	Bracket	2	2	2	71	2014978	Side Panel-R.H.	1

HOOD AND COVERS**KEY****A: 46 Inch Wheel Base****B: 50.8 Inch Wheel Base****C: 54.5 Inch Wheel Base**

REF.	PART NO.	NAME OF PART	QTY.		
			A	B	C
71	2014979	Side Panel—R.H.	1
71	2014980	Side Panel—R.H.	1	..
72	2015002	Side Panel—L.H.	1
72	2015003	Side Panel—L.H.	1
72	2015004	Side Panel—L.H.	1	..
73	2014993	Knurled Nut	2	2	2

REF.	PART NO.	NAME OF PART	QTY.		
			A	B	C
74	2302961	Stud	2	2	2
75	261156	Rubber Strip	AR	AR	AR
76	261158	Rubber Strip	AR	AR	AR
*	"EE" Additional Equipment				
\$	Battery Side Removal				

COUNTERWEIGHT (Figure 2)



REF.	PART NO.	NAME OF PART	QTY.	REF.	PART NO.	NAME OF PART	QTY.
1	2013129	Counterweight	1	3	296431	Washer	4
2	293708	Bolt	4				

OVERHEAD GUARD (Figure 3)

