

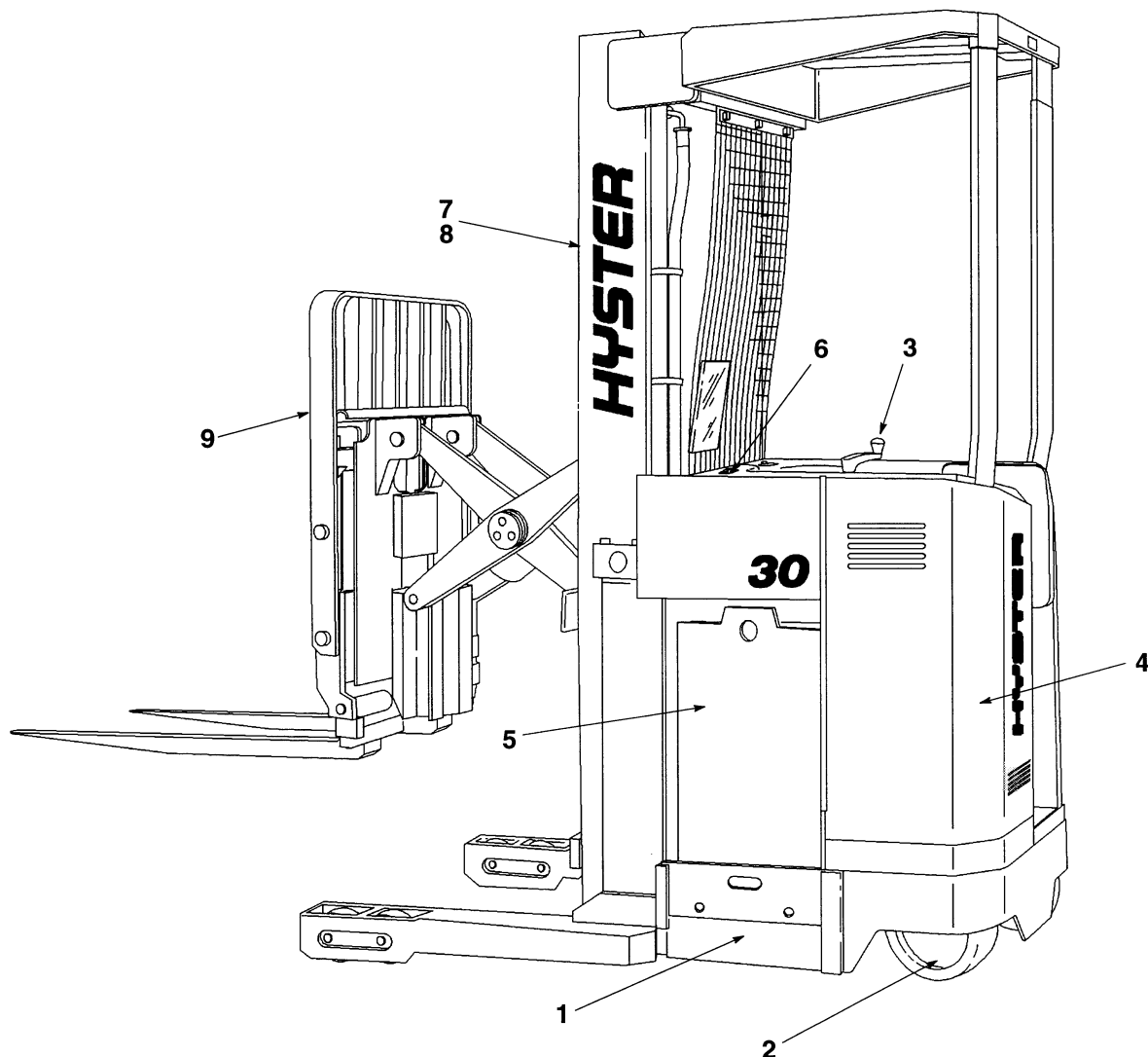
# **PARTS MANUAL**

**ELECTRIC  
N30FR  
(A217)**

CUSTOMER EDITION

# ***HYSTER***

## ILLUSTRATED CONTENTS



REF.	DIVISION	PAGE
1	Frame .....	1
2	Drive Unit .....	13
3	Steering .....	19
4	Brakes .....	25
5	Electrical .....	33
6	Hydraulic .....	41
7	Mast—Two Stage .....	55
8	Mast—Three Stage .....	65
9	Carriage .....	79
10	Options .....	91
11	Numerical Index .....	97

---

**TABLE OF CONTENTS**

<b>DESCRIPTION</b>	<b>NO.</b>
ACCELERATOR (Figure 13) .....	26
BACKREST-EXTENSION (Figure 4) .....	9
BRAKE (Figure 15) .....	30
BRAKE-LINKAGE (Figure 14) .....	28
CARRIAGE-INNER FRAME (Figure 47) .....	86
CARRIAGE-OUTER FRAME-STANDARD (Figure 44) .....	80
CARRIAGE-OUTER FRAME-SIDESHIFTER (Figure 45) .....	82
CARRIAGE-SCISSOR (Figure 46) .....	84
CASTER WHEEL (Figure 6) .....	11
CHAINS, PINS AND ANCHORS (Figure 40) THREE STAGE .....	72
CHAINS, PINS AND ANCHORS (Figure 34) TWO STAGE .....	60
CONTACTOR-1A/PUMP (Figure 20) .....	39
CONTACTOR-FORWARD/REVERSE (Figure 19) .....	38
CONTACTOR-LINE (Figure 21) .....	40
CYLINDER-MASTER (Figure 16) .....	31
CYLINDER-REACH (Figure 48) .....	88
CYLINDER-SIDESHIFTER (Figure 50) .....	90
CYLINDER-TILT (Figure 49) .....	89
DRIVE UNIT (Figure 8) .....	16
DRIVE-MASTER (Figure 7) .....	14
ELECTRICAL (Figure 17) .....	34
EXTINGUISHER-FIRE (Figure 53) .....	94
FORK (Figure 54) PIN TYPE .....	95

## TABLE OF CONTENTS

DESCRIPTION	PAGE
FREE LIFT CYLINDER (Figure 43) THREE STAGE .....	77
GUARD OPERATOR (Figure 3) .....	8
HOOD/COVERS (Figure 1) .....	2
HYDRAULIC (Figure 22) .....	42
LABELS AND PAINT (Figure 2) .....	6
LEVERS—HAND (Figure 31) .....	53
LIFT (Figure 33) TWO STAGE .....	58
LIFT—INNER (Figure 38) THREE STAGE .....	68
LIFT—OUTER AND INTERMEDIATE (Figure 39) THREE STAGE .....	70
LIGHTS (Figure 52) .....	93
MAIN AND FREE LIFT CYLINDER INSTALLATION (Figure 41) THREE STAGE .....	74
MAIN LIFT CYLINDER (Figure 42) THREE STAGE .....	76
MAIN LIFT CYLINDER (Figure 36) TWO STAGE .....	64
MAIN LIFT CYLINDER INSTALLATION (Figure 35) TWO STAGE .....	62
MAST—OUTER AND INNER (Figure 32) TWO STAGE .....	56
MAST—OUTER, INTERMEDIATE AND INNER (Figure 37) THREE STAGE .....	66
MOTOR—HYDRAULIC (Figure 12) .....	23
MOTOR—HYDRAULIC (Figure 24) .....	45
MOTOR—HYDRAULIC (Figure 26) AUXILIARY .....	47

**Thanks very much for your reading,  
Want to get more information,  
Please click here, Then get the complete  
manual**

**JustClickHere** 

**NOTE:**

**If there is no response to click on the link above,  
please download the PDF document first, and then  
click on it.**

**Have any questions please write to me:  
[admin@servicemanualperfect.com](mailto:admin@servicemanualperfect.com)**

---

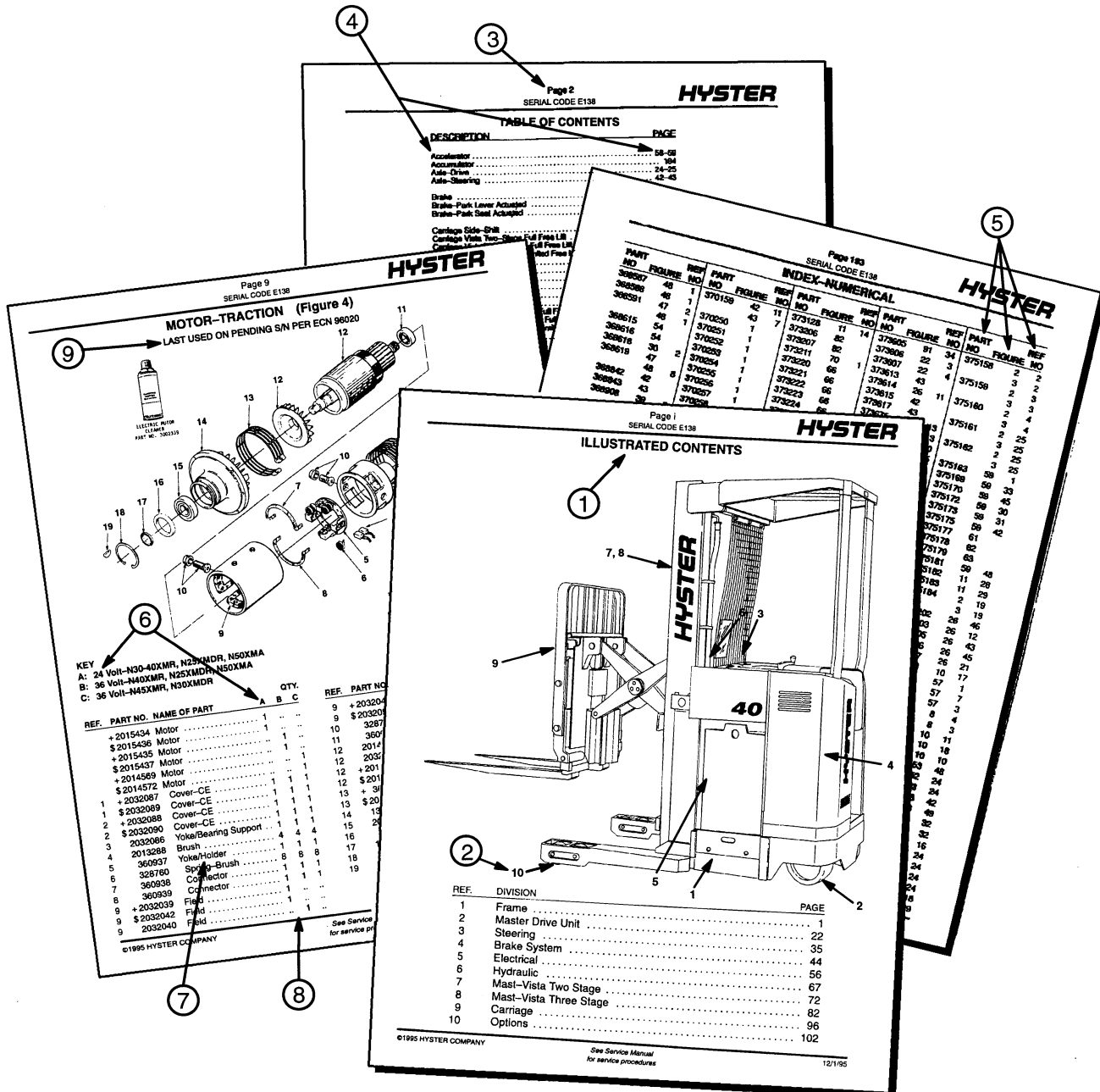
**TABLE OF CONTENTS**

<b>DESCRIPTION</b>	<b>PAGE</b>
MOTOR-TRACTION (Figure 9) .....	18
PANEL-CONTROL (Figure 18) .....	36
PUMP-HYDRAULIC (Figure 23) .....	44
PUMP-HYDRAULIC (Figure 25) AUXILIARY .....	46
STEERING (Figure 10) .....	20
STEERING PUMP (Figure 11) .....	22
TANK-HYDRAULIC (Figure 27) .....	48
TRAY-BATTERY (Figure 51) .....	92
VALVE/ATTACHING (Figure 28) .....	49
VALVE-AUXILIARY (Figure 30) .....	52
VALVE-CONTROL (Figure 29) .....	50
WHEEL-LOAD (Figure 5) .....	10

## HOW TO USE THE ILLUSTRATED PARTS MANUAL

This Parts manual describes and illustrates assemblies, subassemblies and detail parts needed for service replacement.

The different constructions are indicated by keys, symbols and footnotes.



**WHEN THE PART NUMBER AND THE NEXT HIGHER ASSEMBLY IS NOT KNOWN:**

1. USE: Determine the function and application of the part required. Turn to the Illustrated Contents page immediately behind the front cover, and select the most appropriate area.
2. Use the Section Index to determine the assembly which would normally contain the part required. Then locate the part on the assembly breakdown page.

**WHEN THE PART NUMBER IS NOT KNOWN AND THE NEXT HIGHER ASSEMBLY IS KNOWN:**

3. Determine the assembly the required part is used on. Turn to the Table of Contents page immediately following the Illustrated Contents.
4. Locate the assembly the required part is used on and turn to the page indicated for that assembly. Proceed then to locate the part on the assembly breakdown page.

**WHEN THE PART NUMBER IS KNOWN:**

5. Use the Numerical Index to find the part number. Turn to the Figure listed and locate the part as indicated by the reference number.

**GENERAL:**

The Assembly Breakdowns include part numbers, description, quantities required, keys and footnotes to help in selecting the correct parts.

6. Keys are used to show effective serial numbers for two or more similar assemblies, RH and LH assembly parts, etc. Select the appropriate key, "A", "B", "C", or "D" and the corresponding quantity column to find the required parts.
7. Indented descriptions under "Name of Part" are used to indicate subparts of assemblies. A major assembly is not indented. Parts under the first, second, or third indent are sub-parts of the major assembly shown above them.
8. Quantities shown are for one assembly. Note that two assemblies are shown, but the quantities of the subparts are indicated as three and three. This means three per assembly.
9. Engineering Change Notice (ECN) numbers for pending serial numbers are shown to allow for the inclusion of the most current parts information. Contact your local Dealer for Hyster Lift Trucks for serial number information listed by ECN number.

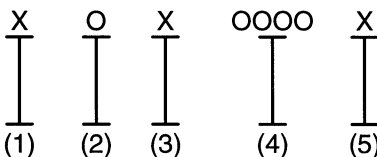
**ORDERING PARTS:**

When ordering replacement parts, give the unit serial number, part number, name of part and quantity required.

For any further information on parts, service, or ordering, consult your local Dealer for Hyster Lift Trucks.



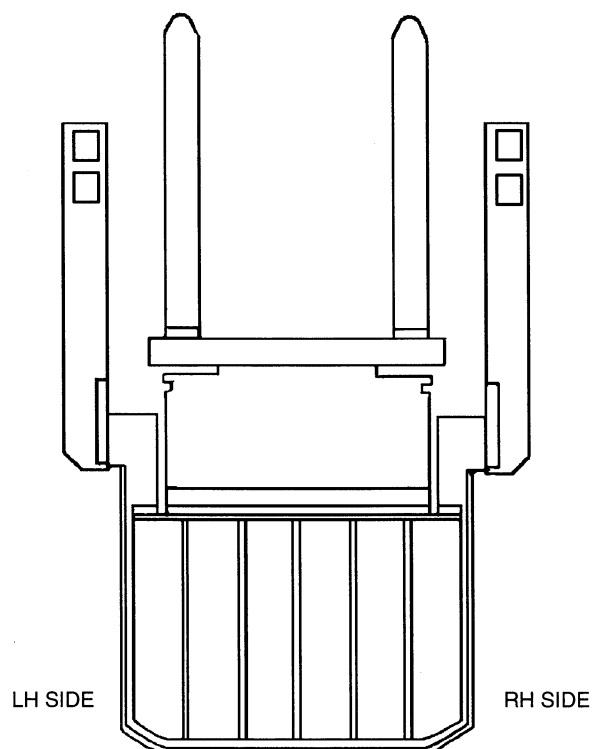
## UNIT IDENTIFICATION UNIT S/N



- (1) & (2) The first letter and number denote the design series and model of the unit.
- (3) The second letter denotes the Plant at which the unit was manufactured.
- (4) The number series denotes the serial number of the unit.
- (5) The final letter denotes the year of manufacture starting with "A" in 1957 and 1980. The letters "I", "O", and "Q" will not be used.

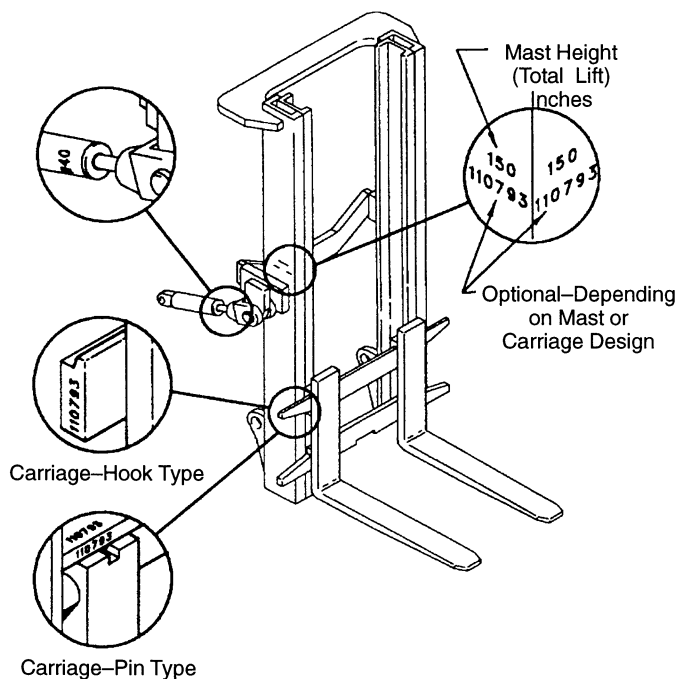
For pending serial numbers contact your local Hyster Dealer.

Parts referred to in this book as right or left hand parts are in accordance with the illustration below.



## LIFT EQUIPMENT IDENTIFICATION

1. Mast group numbers and total lift heights are stamped on the right hand outer mast approximately four feet from the bottom of the fork. The group numbers include the inner and outer masts, lift cylinder, lift chain and bleeder hoses or pipes.
2. The carriage and tilt cylinder numbers are located as shown. Lift cylinder numbers are stamped on the cylinder shell near the bleeder screw or on the chain anchor. Fork part number, capacity rating, plant code letter and date of manufacture are stamped approximately six inches below the top RH side of the forks. Always refer to these group and part numbers when ordering service parts.



## PUBLICATIONS

Every new lift truck is provided with at least three publications. These publications are the PARTS MANUAL, the OPERATING MANUAL, and the section of the SERVICE MANUAL called Periodic Maintenance.

The OPERATING MANUAL must always be available on every lift truck. This manual has information that the operator must know for inspection and operation of the lift truck. The section Periodic Maintenance has a

recommended schedule of service intervals and the procedures for servicing the lift truck.

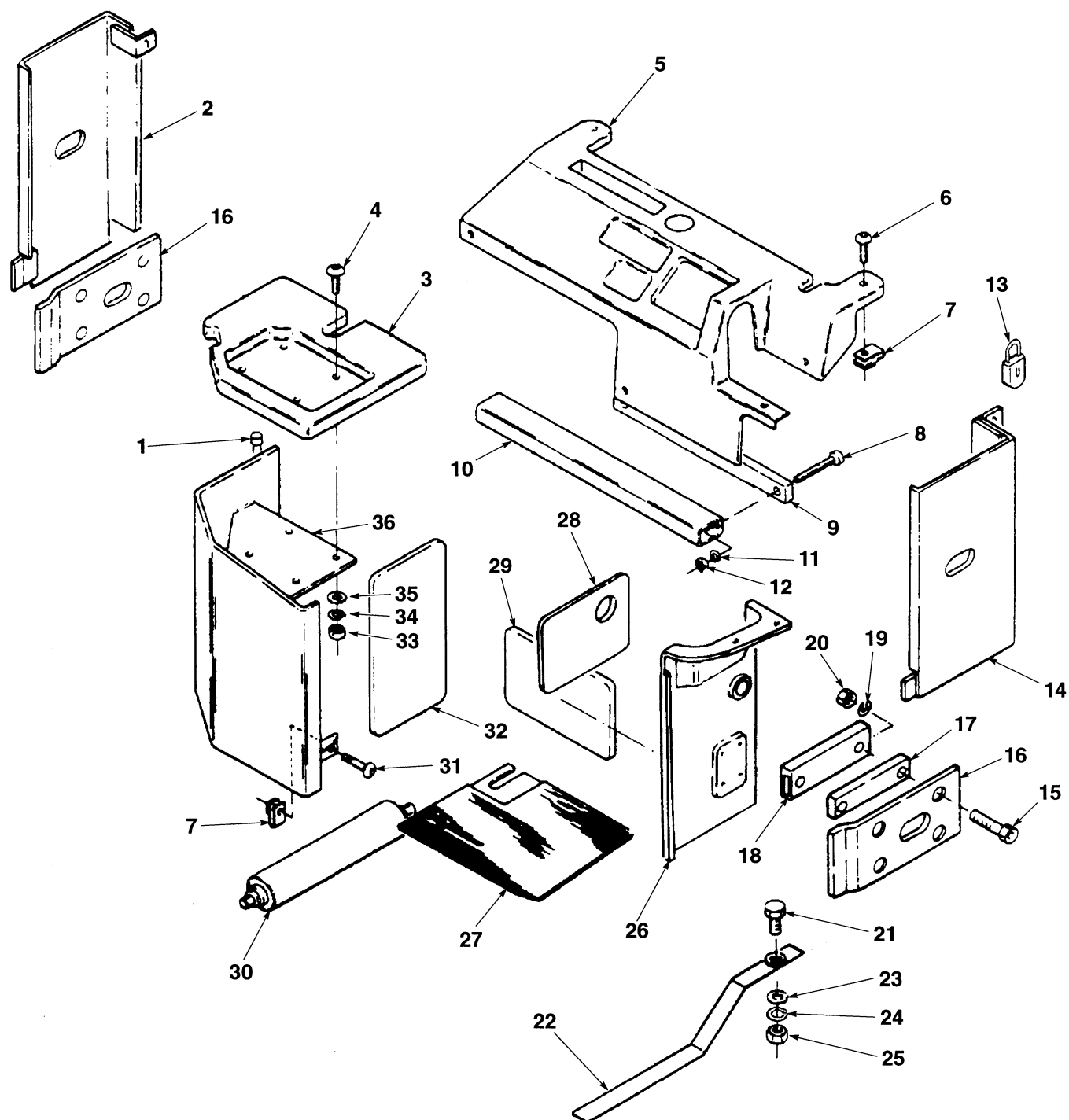
These manuals, other publications and programs are available from your Dealer for Hyster Lift Trucks to help you operate and maintain your lift truck professionally. See the list that follows for reference to items for lift trucks in this PARTS MANUAL.

PUBLICATION	HYSTER PART NUMBER
<b>Operating Manual</b>	
English (U.S.) .....	897434
<b>Service Manual (Complete) .....</b>	<b>897441</b>
Frame (100 SRM 377) .....	897242
DC Motor Maintenance (620 SRM 294) .....	897076
Master Drive Unit (630 SRM 283) .....	897065
Steering Control Unit (1600 SRM 54) .....	910076
Steering System (1600 SRM 378) .....	897243
Brake System (1800 SRM 379) .....	897244
Hydraulic Gear Pumps (1900 SRM 97) .....	910091
Hydraulic System (1900 SRM 380) .....	897245
EV-100/200 LX Motor Controller/Handset (2200 SRM 460) .....	897409
Industrial Battery (2240 SRM 1) .....	899648
Battery Indicators (2260 SRM 138) .....	910114
Lift Cylinders (4000 SRM 135) .....	910119
Lift Cylinders—Vista Masts (4000 SRM 481) .....	897446
Vista Masts—Repair (4000 SRM 482) .....	897447
Reach Carriages (4500 SRM 483) .....	897448
Inch (SAE) and Metric Fasteners (8000 SRM 231) .....	910442
Periodic Maintenance (8000 SRM 373) .....	897199
Diagrams (8000 SRM 476) .....	897441
Capacities and Specifications (8000 SRM 386) .....	897251
<b>Parts Manual .....</b>	<b>897431</b>
<b>Operator Training Program</b>	
Operator Training Kit Complete	
Slide Format with Carry Case .....	599628
1/2" VHS Format with Carry Case .....	852165
"Safety is a Attitude" (1/2" VHS) .....	852690
"Safety Rules" Playing Cards .....	852695
<b>Sold Alone Kit Catalog .....</b>	<b>852505</b>

**FRAME**

<b>DESCRIPTION</b>	<b>PAGE NO.</b>
BACKREST-EXTENSION (Figure 4) .....	9
CASTER WHEEL (Figure 6) .....	11
GUARD OPERATOR (Figure 3) .....	8
HOOD/COVERS (Figure 1) .....	2
LABELS AND PAINT (Figure 2) .....	6
WHEEL-LOAD (Figure 5) .....	10

## HOOD/COVERS (Figure 1)



## HOOD/COVERS

REF.	PART NO.	NAME OF PART	QTY.	REF.	PART NO.	NAME OF PART	QTY.
1	2305001	Pin-Hinge .....	1	22	# 240065	Strap-Static .....	1
2	#*	Door-L.H. ....	1	23	18515	Washer .....	2
3	368023	Cover .....	1	24	# 15155	Lockwasher .....	1
4	222596	Bolt .....	4	25	# 15055	Nut .....	1
5	*	Cover .....	1	26	2310395	Cover .....	1
6	2307012	Capscrew .....	9	27	368046	Platform .....	1
7	269200	Nut .....	10	28	388393	Pad .....	1
8	+	Screw .....	2	29	379207	Pad .....	1
9	+	Spacer .....	..	30	*	Roller .....	6
10	+	Tube .....	..	31	1316470	Capscrew .....	1
11	+	Lockwasher .....	..	32	379207	Pad .....	1
12	+	Nut .....	..	33	15054	Nut .....	4
13	# 2305060	Padlock .....	2	34	15154	Lockwasher .....	4
14	#*	Door-R.H. ....	1	35	15127	Washer .....	4
15	%	Screw .....	..	36	2303832	Door .....	1
16	*	Plate .....	1				
17	%	Spacer .....	..				
18	%	Tube .....	..				
19	%	Lockwasher .....	..				
20	%	Nut .....	..				
21	#	18498 Screw .....	1				

# EE Construction  
 \* See Battery Compartment Chart  
 + See Battery Spacer Front to Back Chart  
 % See Battery Spacer Side to Side Chart

## HOOD/COVERS

### BATTERY COMPARTMENT

REF. NO.	NAME OF PART 1 2 3 4	BATTERY BOX SIZE	
		12.5 in	14.6 in
2	Door-L.H.	2304373	2306428
5	Cover	2310156	2307869
14	Door-R.H.	2307864	2304369
16	Plate	2311002	2305315
30	Roller	2303911	368022

### BATTERY SPACER FRONT TO BACK

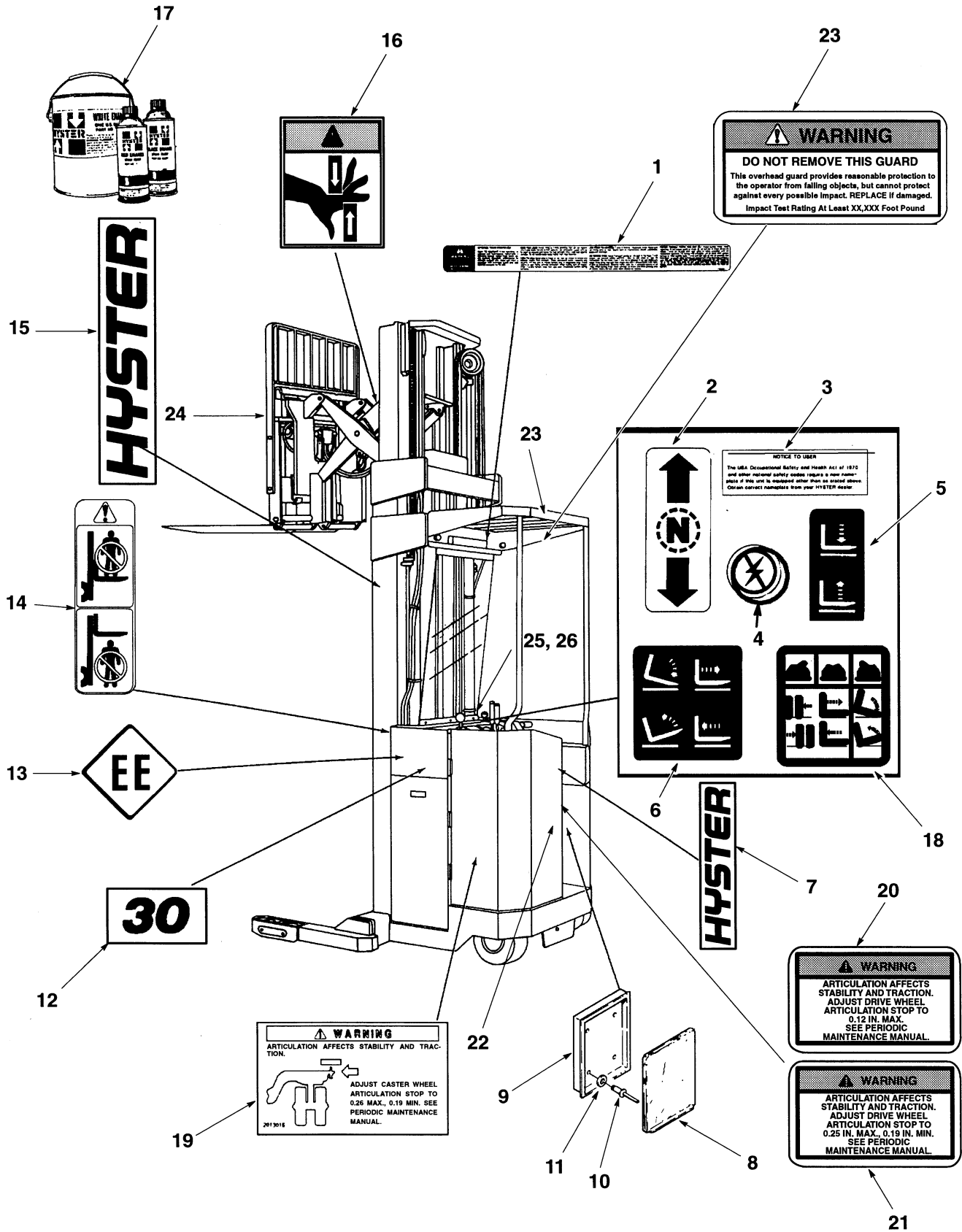
REF. NO.	NAME OF PART 1 2 3 4	PART NO.	QUANTITY-TOTAL SPACER REQUIRED					
			0.5 in	1.00 in	1.50 in	2.00 in	2.50 in	3.00 in
8	Screw	18497	2	2	—	—	—	—
8	Screw	18508	—	—	2	2	—	—
8	Screw	18513	—	—	—	—	2	2
9	Spacer	2306205	1	—	1	—	1	—
10	Tube	2306243	—	1	1	1	1	2
11	Lockwasher	15155	2	2	2	2	2	2
12	Nut	15055	—	2	2	2	2	2

### BATTERY SPACER SIDE TO SIDE

REF. NO.	NAME OF PART 1 2 3 4	PART NO.	QUANTITY-TOTAL SPACER REQUIRED					
			0.5 in	1.00 in	1.50 in	2.00 in	2.50 in	3.00 in
15	Screw	16836	2	4	4	4	2	—
15	Screw	18498	—	—	—	—	2	4
17	Spacer	2302703	1	2	1	—	1	2
18	Tube	2309538	—	—	1	2	2	2
19	Lockwasher	15155	—	—	2	4	4	4
20	Nut	15055	—	—	2	4	4	4

## This image shows a single sheet of white paper with horizontal ruling lines. The lines are evenly spaced and run across the width of the page. There are no margins, text, or other markings on the paper.

## LABELS AND PAINT (Figure 2)





## LABELS AND PAINT

REF.	PART NO.	NAME OF PART	QTY.	REF.	PART NO.	NAME OF PART	QTY.
1	1326335	Label-Safety .....	1	17	316844	Paint-Red Spray .....	AR
2	309684	Label-Fwd./Rev. ....	1	17	336593	Paint-Black Spray .....	AR
3	1335137	Label-Nameplate Tag .....	1	17	336594	Paint-Black 1 Gallon .....	AR
4	372642	Label-Battery Disconnect .....	1	18	1332534	Plate .....	1
5	380691	Label-Control Lever w/Sideshift .	1	19	2013016	Decal-Warning .....	1
6	380692	Label-Control Lever w/o Sideshift	1	20	* 2013017	Decal-Warning .....	1
7	2305417	Label-Hyster (Black) .....	1	21	** 2013019	Decal-Warning .....	1
8	335991	Cover-Info .....	1	22	389692	Label-Patent .....	1
9	335989	Base-Info .....	1	22	197065	Washer-Flat .....	4
10	222024	Rivet .....	4	23	1339843	Label-O.H.G. Warning .....	1
11	15139	Flatwasher .....	4	24	1304054	Label-Nameplate .....	1
12	2311746	Label-30 .....	2	25	389687	Cover-Nameplate .....	1
13	196927	Label-Safety EE .....	2	25	17173	Rivet .....	4
14	380171	Label-Upright .....	2	26	213826	Plate-UL-E .....	1
15	2306018	Label-Hyster (Yellow) .....	2	26	213931	Plate-UL-EE .....	1
16	2305689	Label-Warning .....	1				
17	1345809	Paint-Yellow Spray .....	AR				
17	1345808	Paint-Yellow 1 Gallon .....	AR				

\* 241 Inch T.O.F. and below  
\*\* Above 241 Inch T.O.F.

**Note:** Truck is to be painted yellow with the following exceptions:

**Satin Black Finish**

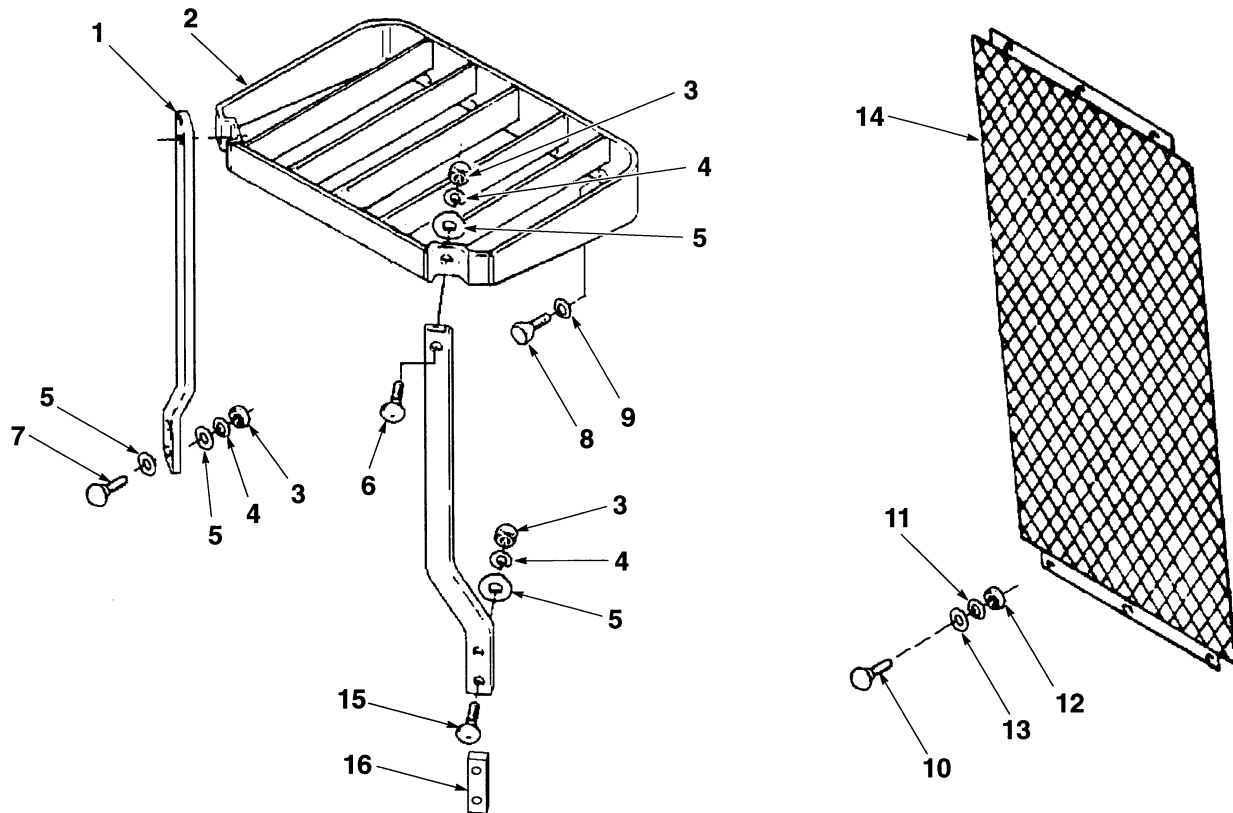
Accelerator and Accelerator Cavity  
Overhead Guard and Overhead Cavity  
Mast and Carriage  
Brake Pedal  
Steering Lever  
Hoist an Reach/Tilt Levers  
Battery Disconnect Lever  
Operator Guard-CRE/FRE  
Battery Retainer Sideplates

Red  
Forks

**Not Painted**

Operator Platform Pad  
Knee and Hip Pads  
Brake Pad  
ABS Cover  
Plastic Knobs  
Accelerator Cover Plate and Switches  
Accelerator Grip  
Glass Operator Guard  
Tires  
Mast Chains and Switches  
Name and Patent Plates  
Gauges

## GUARD OPERATOR (Figure 3)

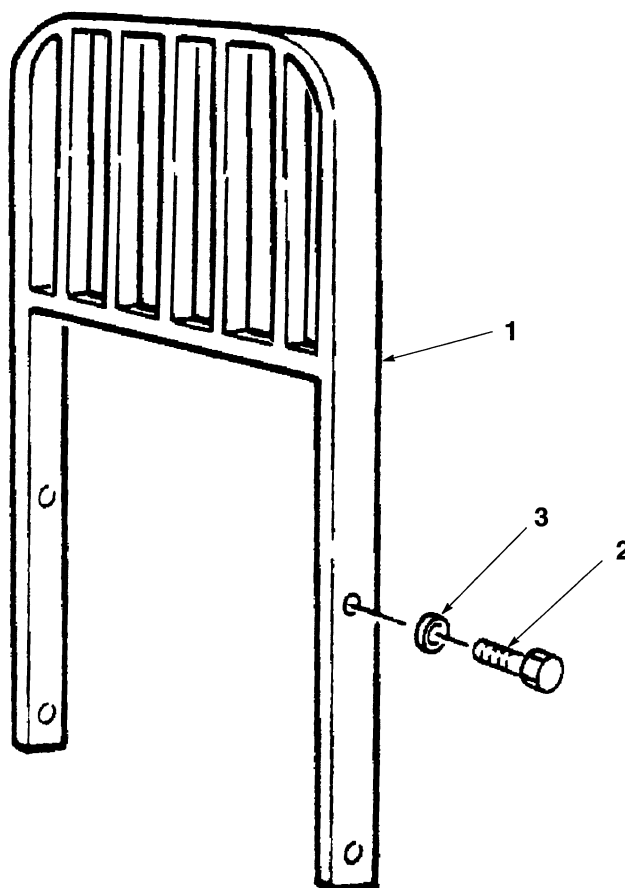


REF. NO.	NAME OF PART 1 2 3 4	LIFT HEIGHT TO TOP OF FORKS		
		135 in	147 in AND GREATER THAN 157 in	157 in
1	Post	2310240	2302488	2311778
14	Guard	2302237	2305603	2309623

REF. NO.	NAME OF PART 1 2 3 4	BATTERY BOX SIZE	
		12.5 in	14.6 in
2	Guard-Overhead	2310941	2303563

REF.	PART NO.	NAME OF PART	QTY.	REF.	PART NO.	NAME OF PART	QTY.
1	*	Post	2	9	15162	Lockwasher	6
2	*	Guard-Overhead	1	10	18718	Capscrew	6
3	15058	Nut	4	11	15154	Lockwasher	6
4	15158	Lockwasher	4	12	15054	Nut	6
5	15178	Washer	4	13	15127	Washer	6
6	1300698	Capscrew	2	14	*	Guard	1
7	18743	Capscrew	2	15	18741	Capscrew	2
8	168054	Capscrew	6	16	2013151	Bar	1

**BACKREST-EXTENSION (Figure 4)**



REF.	PART NO.	NAME OF PART	QTY.
1	2305076	Extension-Backrest .....	1
2	16644	Screw .....	4

REF.	PART NO.	NAME OF PART	QTY.
3	15125	Washer .....	4