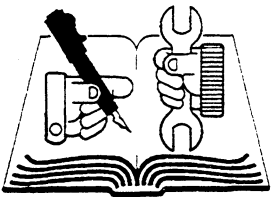


# PARTS MANUAL

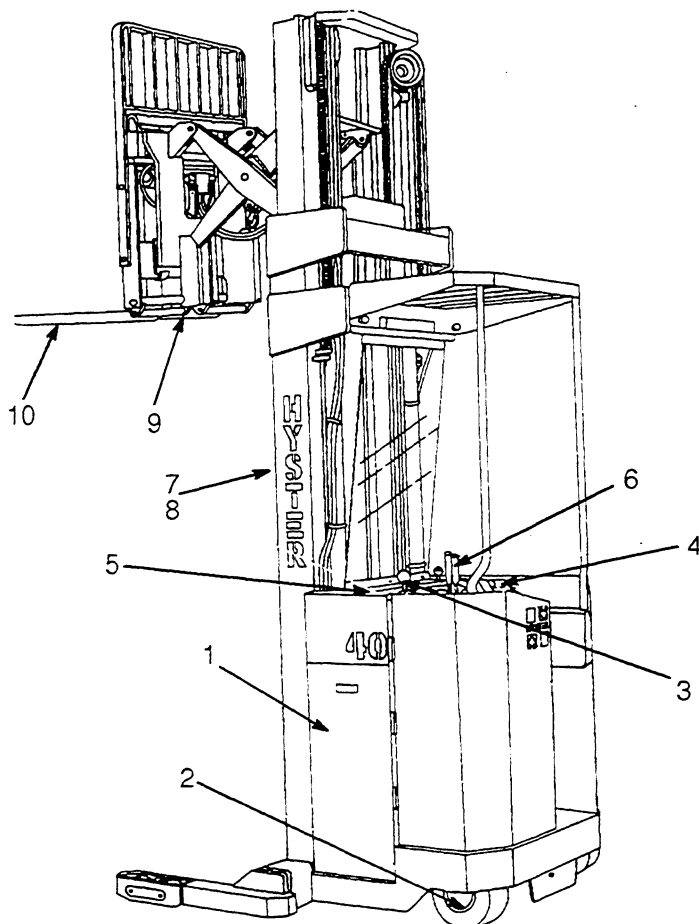
**ELECTRIC  
N40-45-50EA  
N40-45ER**



Hyster Easy Language Program

# CUSTOMER EDITION

## ILLUSTRATED CONTENTS



1	Frame/Body .....	7
2	Unit-Master Drive .....	17
3	Steering .....	23
4	Brake/Accelerator .....	29
5	Electrical .....	37
6	Hydraulic .....	49
7	Mast-Vista Two-Stage .....	63
8	Mast- Vista Three-Stage .....	71
9	Carriage .....	84
10	Optional .....	113

**TABLE OF CONTENTS**

DESCRIPTION	PAGE NO.
Accelerator . . . . .	30 - 31
Brake . . . . .	34
Carriage 24 Inch . . . . .	85 - 91
Carriage 36-42 Inch Reach . . . . .	94 - 99
Carriage Straddle . . . . .	108 - 109
Caster . . . . .	16
Contactor-Forward/Reverse . . . . .	46
Contactor-1 A/Pump . . . . .	47
Covers . . . . .	8 - 9
Cylinder-Lift Vista Three-Stage . . . . .	82 - 83
Cylinder-Lift Vista Two-Stage . . . . .	70
Cylinder-Master . . . . .	35
Cylinder-Reach . . . . .	104 - 105
Cylinder Side-Shift . . . . .	107
Cylinder Tilt . . . . .	106
Drive-Master . . . . .	18 - 19
Electrical . . . . .	38 - 41
Extension-Load Backrest . . . . .	14
Extinguisher-Fire . . . . .	117
Fork . . . . .	118
Guard-Operator . . . . .	13
Hoods/Covers . . . . .	8 - 9
Hydraulic . . . . .	50 - 51
Hydraulic 24 Inch Reach Carriage . . . . .	92 - 93
Hydraulic 36-42 Inch Reach Carriage . . . . .	100 - 103
Index-Numerical . . . . .	3
Labels/Paint . . . . .	10 - 11
Levers-Hand . . . . .	61 - 62
Lift Vista Three-Stage . . . . .	78 - 81
Lift Vista Two-Stage . . . . .	68 - 69
Light-Flashing . . . . .	116
Lights . . . . .	115
Linkage-Brake . . . . .	32 - 33
Mast Vista Three-Stage . . . . .	72 - 77
Mast Vista Two-Stage . . . . .	64 - 67
Motor-Hydraulic . . . . .	53
Motor-Hydraulic Auxiliary . . . . .	55
Motor-Hydraulic Steering . . . . .	27
Motor-Traction . . . . .	22
Paint . . . . .	10 - 11
Panel-Control . . . . .	42 - 43
Panel-Traction . . . . .	44 - 45
Pump-Hydraulic . . . . .	52
Pump-Hydraulic Auxiliary . . . . .	54
Pump-Steering . . . . .	26
Steering . . . . .	24 - 25
Tank-Hydraulic . . . . .	56
Tray-Battery . . . . .	114
Unit-Master Drive . . . . .	20 - 21
Valve/Attaching Parts . . . . .	57
Valve-Auxiliary . . . . .	60
Valve-Control . . . . .	58 - 59
Wheel-Load . . . . .	15

## NUMERICAL INDEX

139	-	16538 .....	119
16540	-	132860 .....	120
135277	-	286083 .....	121
286084	-	365414 .....	122
365424	-	368044 .....	123
368045	-	372650 .....	124
372657	-	388234 .....	125
388235	-	1318796 .....	126
1318797	-	3013875 .....	127

**Thanks very much for your reading,  
Want to get more information,  
Please click here, Then get the complete  
manual**

**JustClickHere** 

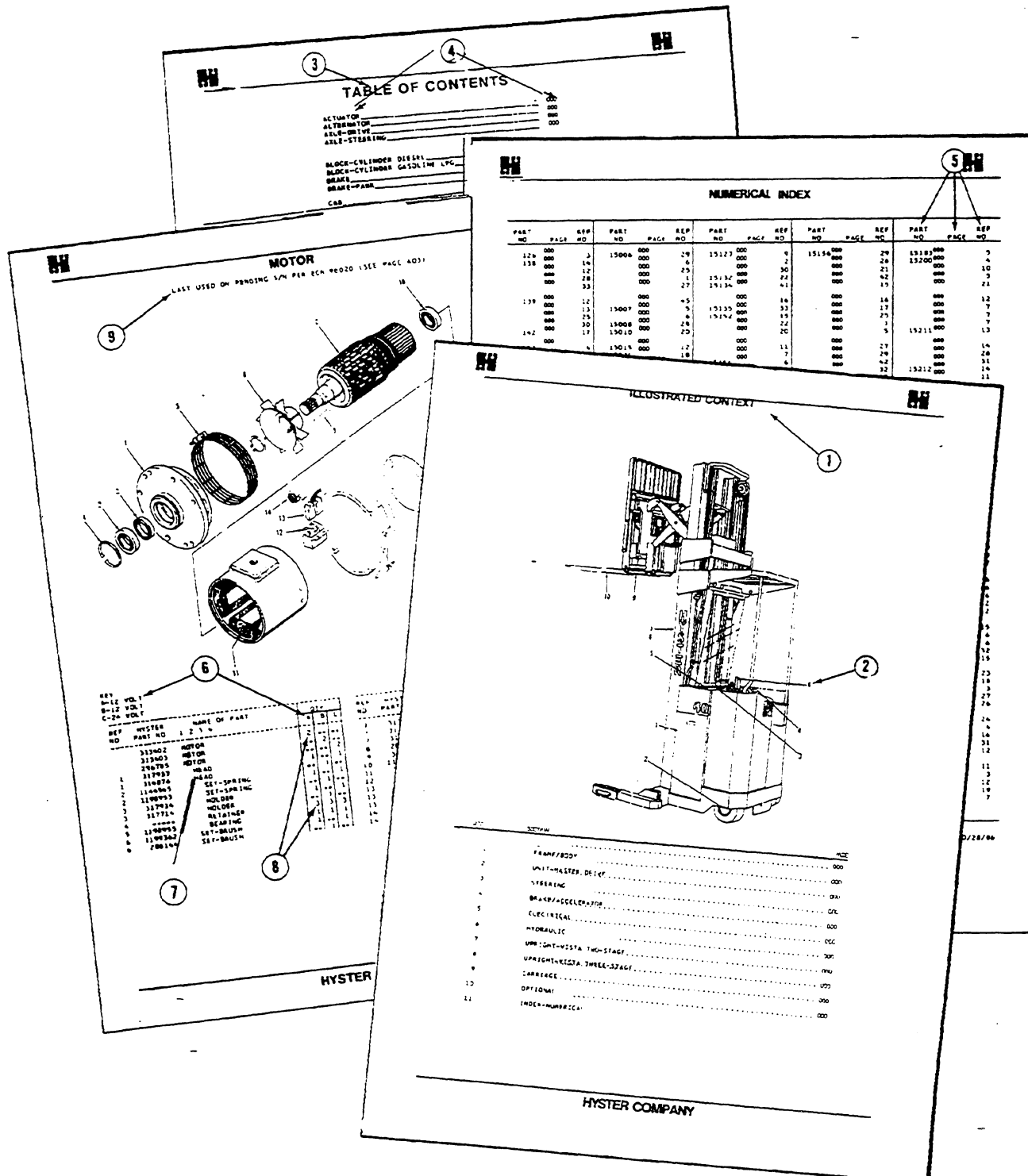
**NOTE:**

**If there is no response to click on the link above,  
please download the PDF document first, and then  
click on it.**

**Have any questions please write to me:  
[admin@servicemanualperfect.com](mailto:admin@servicemanualperfect.com)**

# HOW TO USE THE ILLUSTRATED PARTS MANUAL

This manual describes and illustrates assemblies, subassemblies, and detail parts needed for service replacement.



WHEN THE PART NUMBER AND THE NEXT HIGHER ASSEMBLY IS NOT KNOWN:

1. Determine the function of the part required. Turn to the **Illustrated Index** immediately behind the front cover. Choose the general area of reference most likely to include the part.
2. Find the page number for the reference number you choose and turn to that page. Use the division index to determine the assembly which would normally contain the part required. Then locate the part on the assembly breakdown page.

WHEN THE PART NUMBER IS NOT KNOWN AND THE NEXT HIGHER ASSEMBLY IS KNOWN:

3. Determine the assembly the required part is used on. Turn to the **Table of Contents** immediately following the Illustrated Index.
4. Locate the assembly the required part is used on and turn to the page indicated for that assembly. Then locate the part on the assembly breakdown page.

WHEN THE PART NUMBER IS KNOWN:

5. Use the **Numerical Index** at the back of the manual to find the part number. Turn to the page listed and locate the part as indicated by the reference number.

GENERAL:

6. Keys are used to show effective serial numbers for two or more similar assemblies, RH and LH assembly parts, different configurations, etc.. Select the appropriate key, "A", "B", "C", or "D", which will indicate the column in which the part quantity can be found.
7. Indented descriptions under "Name of Part" are used to indicate assemblies and sub-parts of assemblies. In the example (Item 7), *HEAD* is a sub-part of the major assembly *MOTOR*, and *SET-SPRING* is one of several sub-parts of the assembly *HEAD*.
8. Quantities shown are for one assembly. Note that two assemblies are shown, but the quantities of the sub-parts are indicated as three. This means three per assembly.
9. Engineering change notice (ECN) numbers for pending serial numbers are shown to allow for the inclusion of the most current parts information. Contact your local dealer for Hyster lift truck serial number information listed by ECN number.

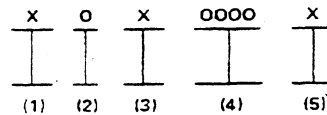
## Ordering parts:

When ordering replacement parts, give the unit serial number, part number, name of part, and quantity required.

For any further information on parts, service, or ordering, consult your local dealer for Hyster lift trucks.

## UNIT IDENTIFICATION

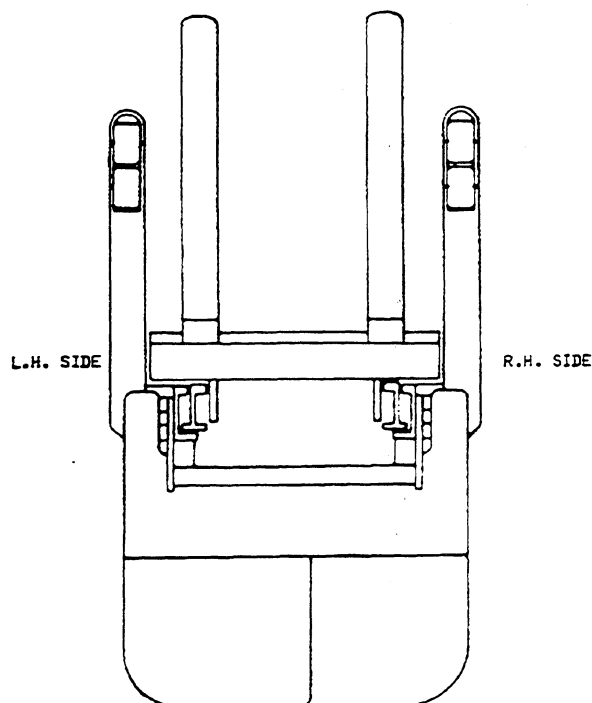
## UNIT S/N



- (1) & (2) THE FIRST LETTER AND NUMBER DENOTE THE DESIGN SERIES AND MODEL OF THE UNIT
- (3) THE SECOND LETTER DENOTES THE PLANT AT WHICH THE UNIT WAS MANUFACTURED
- (4) THE NUMBER SERIES DENOTES THE SERIAL NUMBER OF THE UNIT
- (5) THE FINAL LETTER DENOTES THE YEAR OF MANUFACTURE STARTING WITH "A" IN 1957 AND 1980 THE LETTERS "I", "O", AND "Q" WILL NOT BE USED

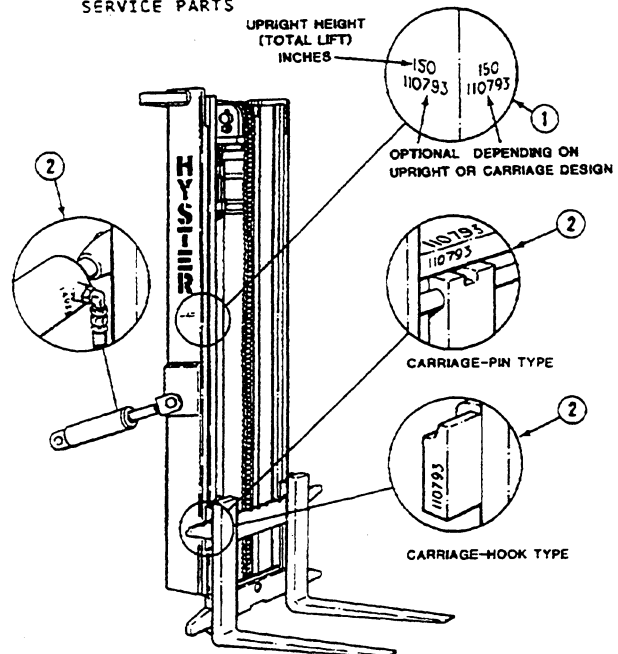
FOR PENDING SERIAL NUMBERS CONTACT YOUR LOCAL HYSTER DEALER

PARTS REFERRED TO IN THIS BOOK AS RIGHT OR LEFT HAND PARTS ARE IN ACCORDANCE WITH THE ILLUSTRATION BELOW



## LIFT EQUIPMENT IDENTIFICATION

- UPRIGHT GROUP NUMBERS AND TOTAL LIFT HEIGHTS ARE STAMPED ON THE RIGHT HAND OUTER UPRIGHT APPROXIMATELY FOUR FEET FROM THE BOTTOM OF THE LOAD ARM. THE GROUP NUMBERS INCLUDE THE INNER AND OUTER UPRIGHTS, LIFT CYLINDER, LIFT CHAINS AND BLEEDER HOSES OR PIPES.
- THE CARRIAGE AND TILT CYLINDER NUMBERS ARE LOCATED AS SHOWN. LIFT CYLINDER NUMBERS ARE STAMPED ON THE CYLINDER SHELL NEAR THE BLEEDER SCREW OR ON THE CHAIN ANCHOR. LOAD ARM PART NUMBER, CAPACITY RATING, PLANT CODE LETTER AND DATE OF MANUFACTURE IS STAMPED APPROXIMATELY SIX INCHES BELOW THE TOP RH SIDE OF LOAD ARMS. ALWAYS REFER TO THESE GROUP AND PART NUMBERS WHEN ORDERING SERVICE PARTS.



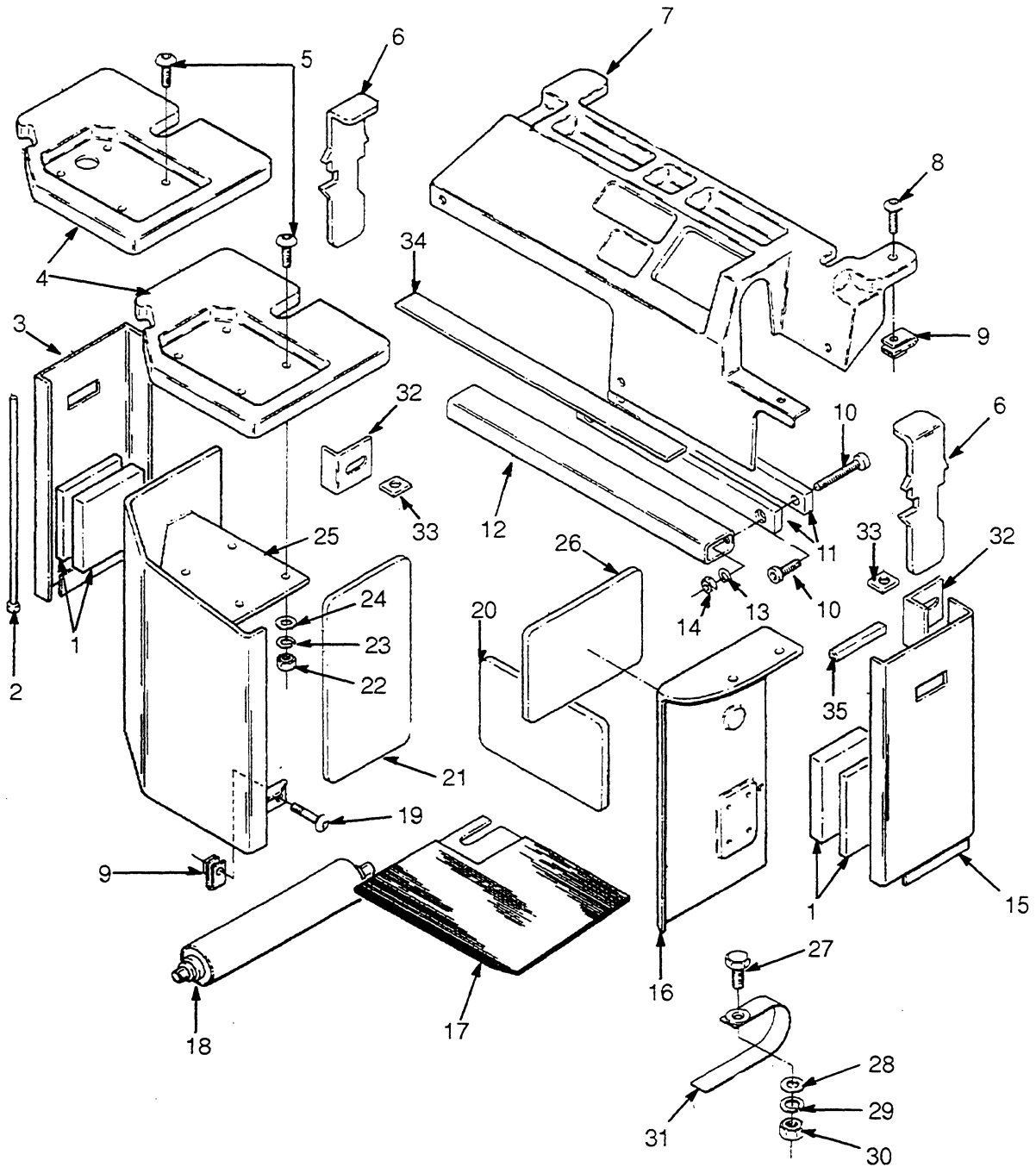




## FRAME/BODY

Caster .....	16
Extension-Load Backrest .....	14
Guard-Operator .....	13
Hoods/Covers .....	8 - 9
Labels/Paint .....	10 - 11
Publications .....	12
Wheel-Load .....	15

## HOODS/COVERS





## HOODS/COVERS

BATTERY COMPARTMENT	BATTERY WIDTH	REFERENCE NUMBER		
		10 CAPSCREW	11 SPACER	12 TUBE
12.12	11.62-12.00	.....	.....	.....
14.50	13.00-13.38	16318	.....	380166
	13.50-13.88	16318	386833	.....
	14.00-14.38	.....	.....	.....
16.50	13.00-13.38	53159 @ 16835	386833	380166
	13.50-13.88	53159 @ 16835	386833	380166
	14.00-14.38	16318	.....	380166
	15.50-15.88	16318	386833	.....
	16.00-16.38	.....	.....	.....

@ Optional

Key

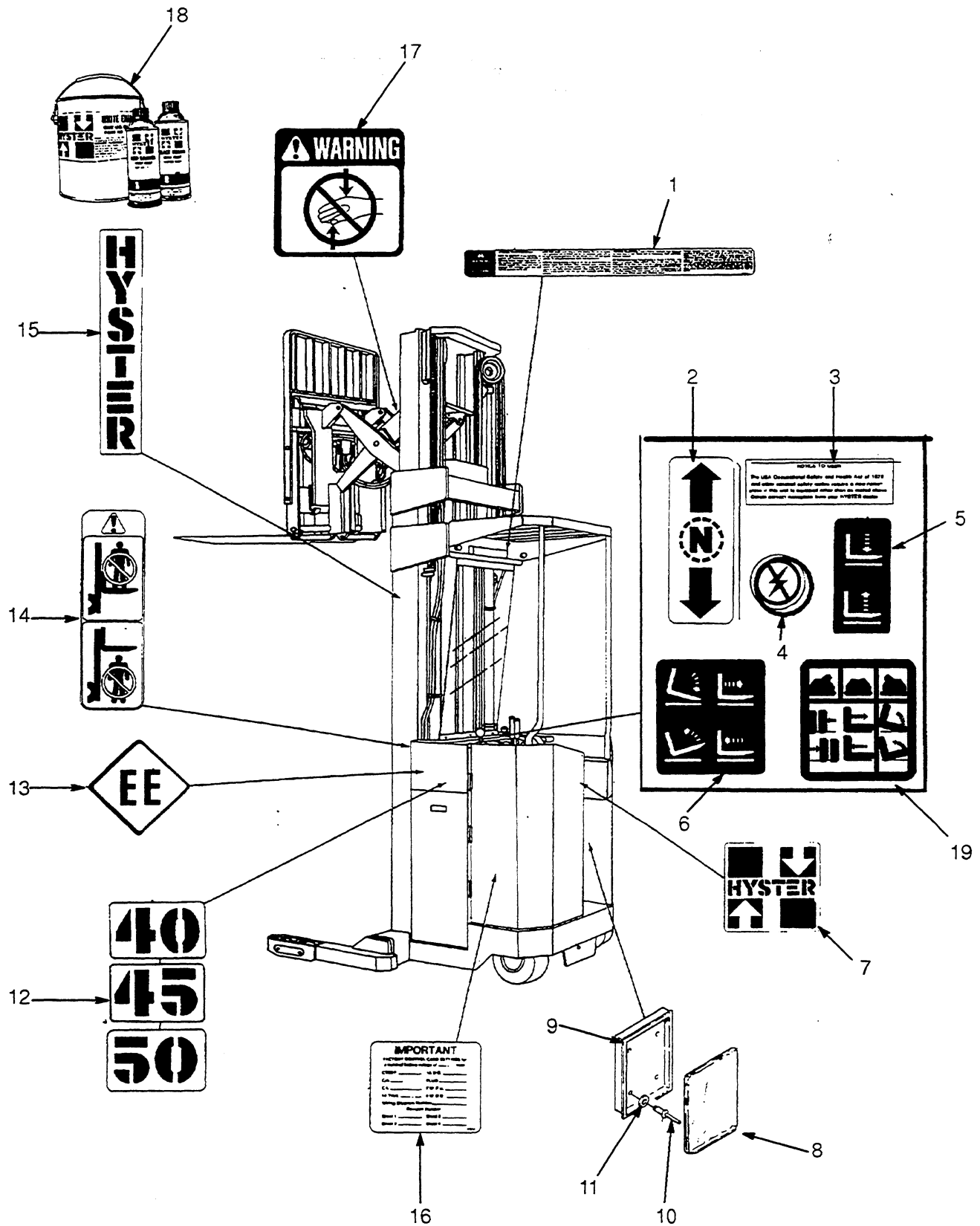
A - N40

B - N45 - 50

REF PART NO. NAME OF PART QTY					REF PART NO. NAME OF PART QTY					
A B					A B					
1	#	380174	Pad	2	2	17	368048	Mat	1	..
1	%	380169	Pad	2	2	17	368049	Mat	..	1
2		1304428	Pin-Hinge	1	1	18	368021	Roller	6	..
3		378465	Door-LH	1	..	18	368022	Roller	..	6
3	&	1302978	Door-LH	1	..	19	1316470	Capscrew	1	1
3		378466	Door-LH	..	1	20	379207	Pad	1	1
3	&	1302979	Door-LH	..	1	21	379709	Pad	1	1
4	!	368023	Cover	1	..	22	15054	Nut	4	4
4	!	368024	Cover	..	1	23	15154	Lockwasher	4	4
4	+	1330234	Cover	1	..	24	15127	Washer	4	4
4	+	1330235	Cover	..	1	25	365583	Door	1	..
5		222596	Bolt	4	4	25	365586	Door	..	1
6		378454	Plate	2	2	26	388399	Pad	1	1
7		368026	Cover	1	..	28	& 18515	Washer	2	2
7		368027	Cover	..	1	29	& 15155	Lockwasher	2	2
8		1316468	Capscrew	9	9	30	& 15055	Nut	2	2
9		269200	Nut	10	10	31	&\$ 239906	Strap-Static	2	2
10	*	.....	Capscrew	2	2	32	& 387999	Bracket	2	2
11	*	.....	Spacer	2	2	33	& 388375	Bar	2	2
12	*	.....	Tube	1	1	34	=& 388376	Plate	1	1
13		15156	Lockwasher	2	2	34	&? 1327448	Plate	1	..
14		15056	Nut	2	2	35	& 1302109	Trim-Edge	1	1
15		378462	Door-RH	1	..		=	Without Upright Spacers		
15	&	1302111	Door-RH	1	..		*	See Chart Above		
15		378463	Door-RH	..	1		#	Battery Length Up To 38.00 Inch		
15	&	1302112	Door-RH	..	1		%	Battery Length Over 38.00 Inch		
16		368032	Cover	1	..		&	Type EE Classification		
16		368033	Cover	..	1		\$	Use 10 Inch 240065		
17		368046	Platform	1	..		!	Last Used On S/N C138D-03339		
17		368047	Platform	..	1		+	First Used On S/N C138D-03340		
							?	12.12 Battery Compartment		

= Without Upright Spacers  
 \* See Chart Above  
 # Battery Length Up To 38.00 Inch  
 % Battery Length Over 38.00 Inch  
 & Type EE Classification  
 \$ Use 10 Inch 240065  
 ! Last Used On S/N C138D-03339  
 + First Used On S/N C138D-03340  
 ? 12.12 Battery Compartment

# LABELS/PAINT





## LABELS/PAINT

REF	PART NO.	NAME OF PART	QTY
1	1326335	Label-Safety .....	1
2	309684	Label-Fwd/Rev .....	1
3	.....	Label .....	1
4	372642	Label .....	1
5	380691	Label .....	1
6	380692	Label .....	1
7	2003856	Label .....	1
8	335991	Cover-Info .....	1
9	335989	Base-Info .....	1
10	222024	Rivet .....	4
11	15139	Washer-Flat .....	4

Note: Truck Is To Be Painted Yellow With The  
Following Exceptions:

Satin Black Finish

- Operator Compartment
- Accelerator And Accelerator Cavity
- Overhead Guard And Overhead Guard Post
- Upright And Carriage
- Brake Pedal
- Steering Lever
- Hoist And Reach/Tilt Levers
- Battery Disconnect Lever
- Battery Door Latches
- Operator Guard CRE/FRE

Red

Forks

REF	PART NO.	NAME OF PART	QTY
12	380683	Label-40 .....	2
12	380684	Label-45 .....	2
12	384504	Label-50 .....	2
13	196927	Label-Safety EE .....	2
14	380171	Label .....	2
15	369859	Label-Hyster .....	2
16	278625	Label-Control .....	1
17	340728	Label-Warning .....	1
18	317225	Paint-Yel Spray .....	AR
18	317226	Paint-Yel 1 Gal .....	AR
18	316844	Paint-Red Spray .....	AR
18	336593	Paint-Blk Spray .....	AR
18	336594	Paint-Blk 1 Gal .....	AR
19	1332534	Plate .....	1

Not Painted

- Operator Platform Pad
- Knee And Hip Pads
- Brake Pad
- ABS Cover
- Plastic Knobs
- Accelerator Cover Plate And Switches
- Accelerator Grip
- Glass Operator Guard
- Tires
- Upright Chains And Switches
- Name And Patent Plates
- Gauges



## PUBLICATIONS

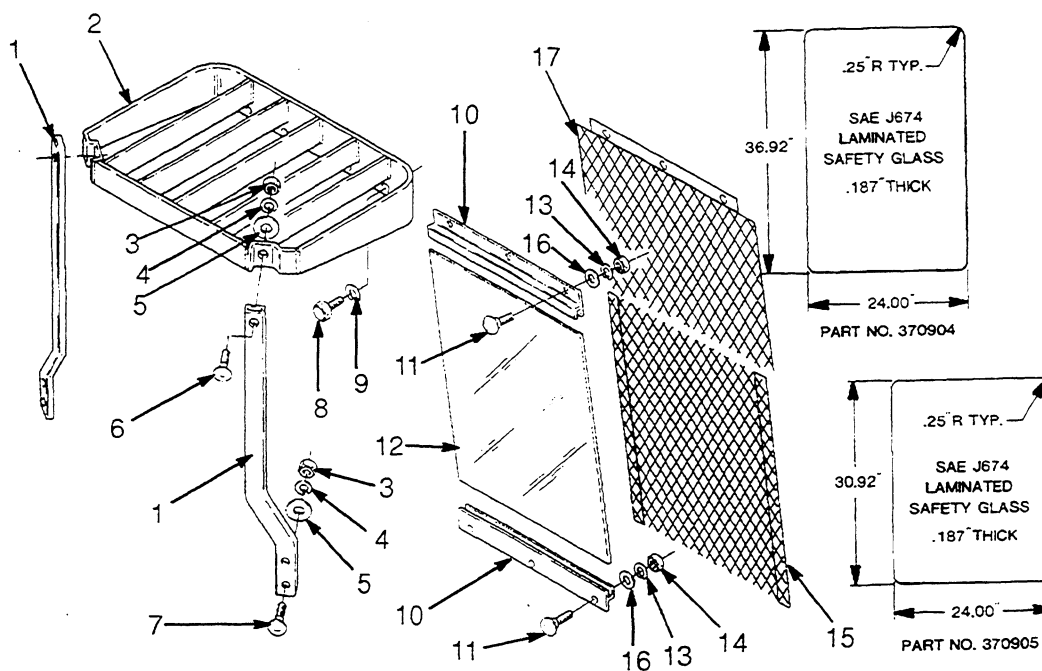
Every new lift truck is provided with at least three publications. These publications are the PARTS MANUAL, the OPERATING MANUAL, and the section of the SERVICE MANUAL called Periodic Maintenance.

The OPERATING MANUAL must always be available on every lift truck. This manual has information that the operator must know for inspection and operation of the lift truck. The section Periodic Maintenance has a rec-

ommended schedule of service intervals and the procedures for servicing the lift truck.

These manuals, other publications and programs are available from your Dealer for Hyster Lift Trucks to help you operate and maintain your lift truck professionally. See the list that follows for reference to items for lift trucks in this PARTS MANUAL.

Publication	Hyster Part Number
<b>Operating Manual</b> .....	897198
<b>Service Manual (complete)</b> .....	897215
The Frame (100 SRM 377) .....	897242
The DC Motor (620 SRM145) .....	899769
DC Motor Maintenance (620 SRM 294) .....	897076
The Master Drive Unit (630 SRM 283) .....	897065
The Steering Control Unit (1600 SRM 54) .....	910076
The Steering System (1600 SRM 378) .....	897243
The Brake System (1800 SRM 379) .....	897244
The Hydraulic Gear Pumps (1900 SRM 97) .....	910091
The Hydraulic System (1900 SRM 380) .....	897245
The EV-100 Motor Controller	
Description And Operation (2200 SRM 287) .....	897069
The EV-100 Motor Controller	
Repair And Adjustments (2200 SRM 288) .....	897090
The EV-100 Motor Controller Troubleshooting (220 SRM 312) .....	897094
Electrical Adjustments ( 2200 SRM 381) .....	897246
The Industrial Battery (2240 SRM 1) .....	899648
The Battery Indicators (2260 SRM 138) .....	910114
The Vista Upright - Description (4000 SRM 382) .....	897247
The Vista Upright - Repair (4000 SRM 383) .....	897248
The Lift Cylinders (4000 SRM 135) .....	910119
The Reach Carriages (4500 SRM 384) .....	897249
Periodic Maintenance (8000 SRM 373) .....	897199
Diagrams (8000 SRM 385) .....	897250
Capacities And Specifications (8000 SRM 386) .....	897251
Inch (SAE) And Metric Fasteners (8000 SRM 231) .....	910442
<b>Parts Manual</b> .....	852310
<b>Operator Training Program</b>	
Operator Training Kit Complete	
Slide Format with Carry Case .....	599628
1/2" VHS Format with Carry Case .....	852165
"Safety is an Attitude" (1/2" VHS) .....	852690
"Safety Rules" Playing Cards .....	852695
<b>Sold Alone Kit Catalog</b> .....	852505

**GUARD-OPERATOR**

LIFT HEIGHT TO TOP OF FORK		REFERENCE NUMBER			
VISTA TWO-STAGE	VISTA THREE-STAGE	1	12	15	17
Inch	Inch	POST	GLASS	GUARD	GUARD
130	195	379718	*@ 1302104	*\$+ 1302104	%# 1302104
142-Up	213-Up	379717	*@ 1302105	*\$+ 1302105	%# 1302105

@ Standard

+ FRE/CRE

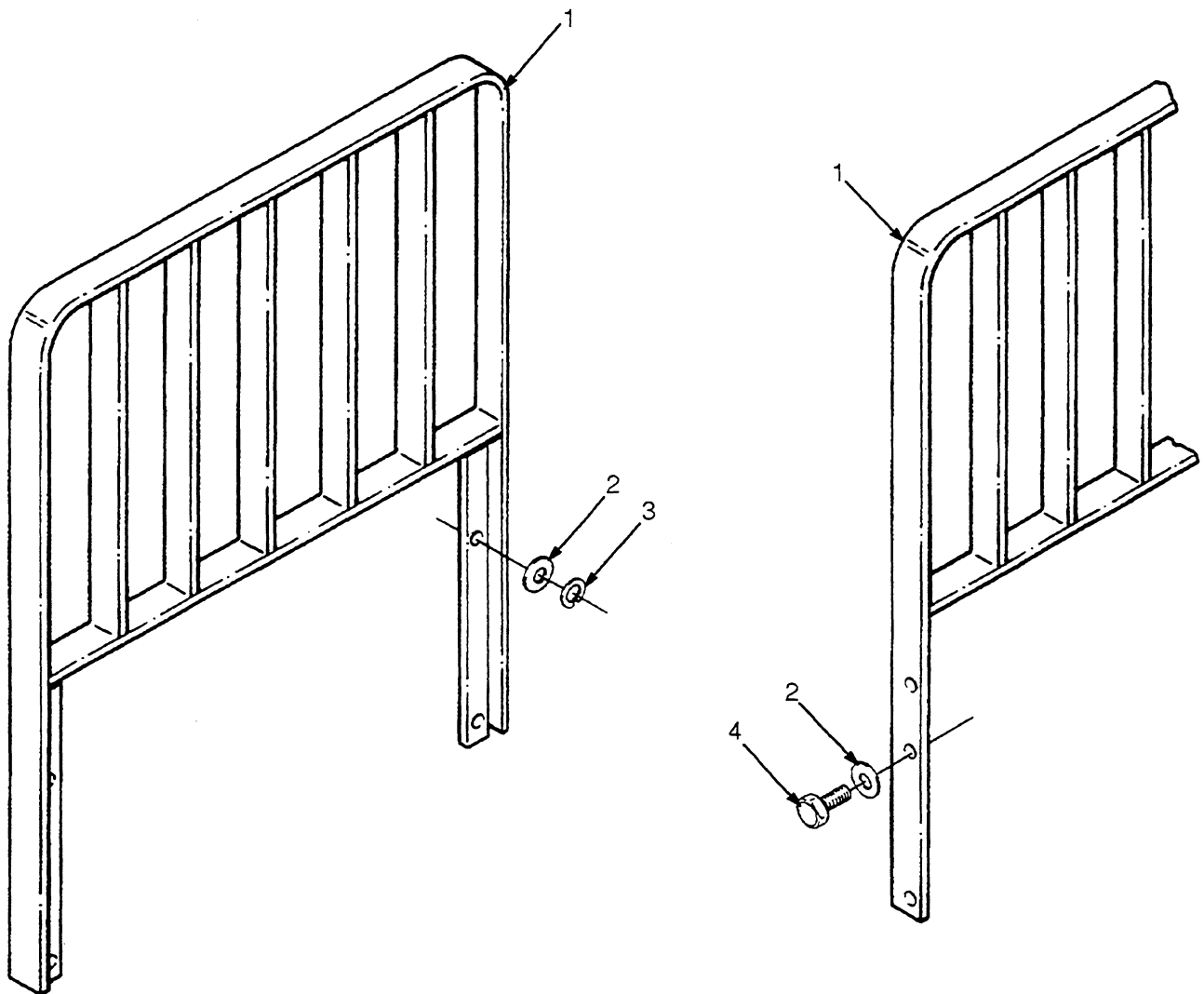
\$ Expanded Metal Guard

# Fabricated Wire Mesh

\* Last Used On S/N C138D-1630 Glass Guard,  
C138D-1751 Metal Guard

% First Used On S/N C138D-1631 Through C138D-  
1638 Glass Guard And C138D-1752 Metal Guard

REF	PART NO.	NAME OF PART	QTY	REF	PART NO.	NAME OF PART	QTY
1	!	Post	2	14	15054	Nut	6
2	\$\$	Guard-Overhead	1	15	\$!+	Guard	1
2	%%	Guard-Overhead	1	16	15127	Washer	6
2	##	Guard-Overhead	1	17	!%	Guard	1
2	&&	Guard-Overhead	1		!	See Chart Above	
3		15058 Nut	6		@	Standard	
4		15158 Lockwasher	6		+	FRE/CRE	
5		15135 Washer	6		\$\$	N40 12.12 Inch Batt. Compartment	
6		1300698 Capscrew	2		5%	N40 14.50 Inch Batt. Compartment	
7		18743 Capscrew	4		##	N45-50 14.50 Inch Batt. Compartment	
8		168054 Capscrew	6		&&	N45-50 16.50 Inch Batt. Compartment	
9		15162 Washer-Lock	6		\$	Last Used On C138D-1630 Glass Guard C138D-1751 Metal Guard	
10	\$@	365326 Glazing	2		%	First Used On C138D-1631 Thru 1638 Glass Guard C138D-1752 Metal Guard	
11		16378 Capscrew	6				
12	\$!@	..... Glass	1				
13		15154 Lockwasher	6				

**EXTENSION-LOAD BACKREST****Key**

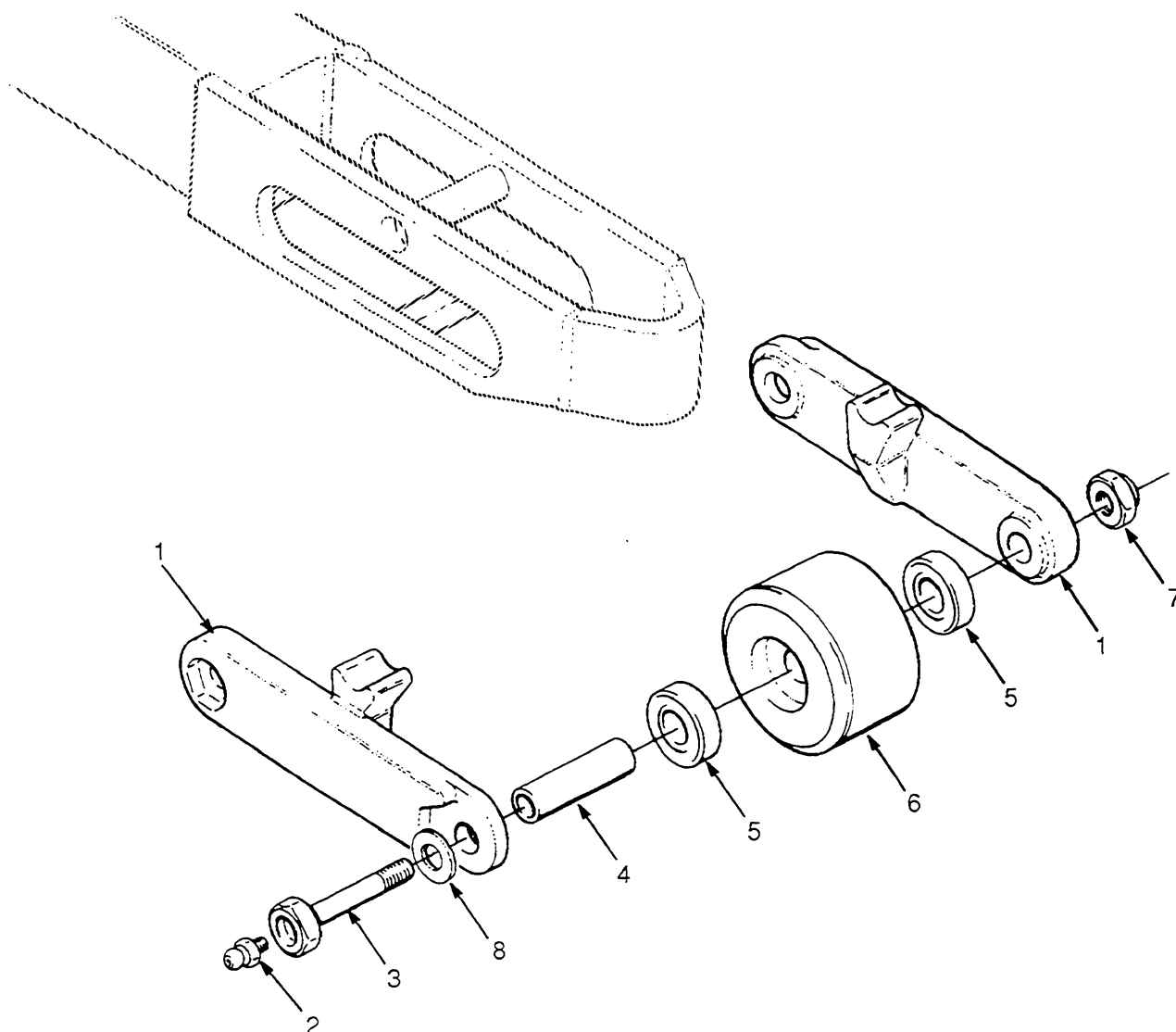
A - Straddle Carriage  
B - Reach Carriage

REF	PART NO.	NAME OF PART	QTY	
			A	B
1	320756	Extension-34 In .....	1	..
1	367996	Extension-Load .....	1	..
1	\$ 379203	Extension-Load .....	1	..
2	292683	Washer .....	4	..

REF	PART NO.	NAME OF PART	QTY	
			A	B
2	221771	Washer .....	..	4
3	296422	Washer .....	4	..
4	221560	Capscrew .....	..	4

\$ Side-Shift Carriage



**WHEEL-LOAD**

Key

A - Standard

B - FRE/CRE

REF	PART NO.	NAME OF PART	QTY	
			A	B
1	360121	Bracket .....	4	4
2	* 16007	Fitting-Grease .....	4	4
2	# 1194442	Fitting-Grease .....	4	4
3	389608	Bolt .....	4	..
3	* 366982	Bolt .....	..	..
3	# 1326187	Bolt .....	4	4
4	374563	Sleeve .....	4	..

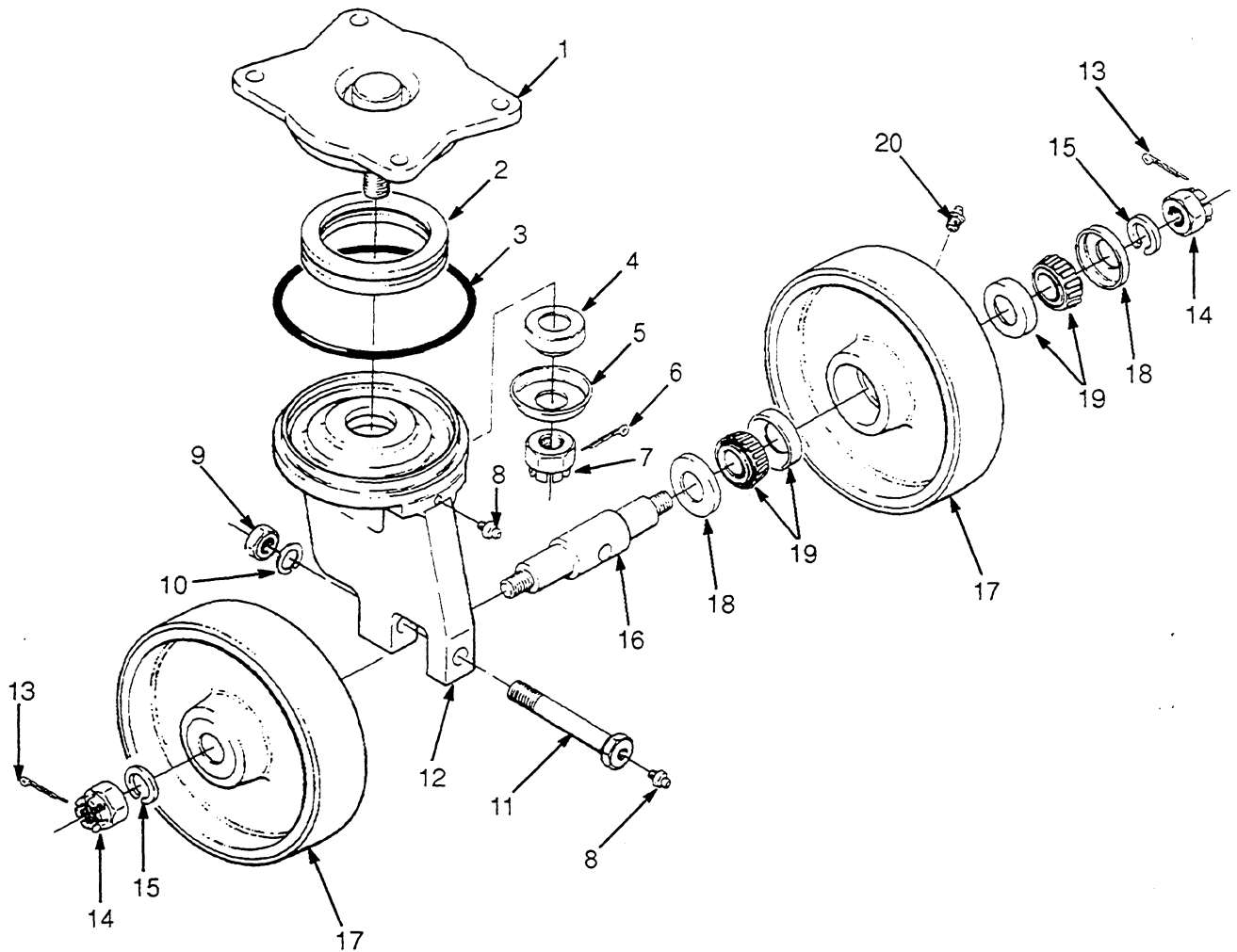
REF	PART NO.	NAME OF PART	QTY	
			A	B
4	365648	Sleeve .....	..	4
5	124629	Bearing .....	8	8
6	@ 1032195	Wheel .....	4	4
6	+ 365649	Wheel .....	4	4
7	222673	Nut .....	4	4
8	15146	Washer .....	4	4

@ N40

+ N45-50

\* Last Used On S/N C138D-2944

# First Used On S/N C138D-2945

**CASTER**

REF	PART NO.	NAME OF PART	QTY
	1329073	Caster .....	1
	1330242	Caster Swivel Assy. ....	1
1	!	..... Plate .....	1
1	@ 1329434	Plate .....	1
2	389572	Bearing .....	1
3	! 388295	O-Ring .....	1
3	@ 1329435	O-Ring .....	1
4	3003625	Set-Cone/Cup .....	1
5	389627	Cover-Dust .....	1
6	15245	Pin-Cotter .....	1
7	303139	Nut .....	1
8	389628	Fitting .....	2
9	389574	Nut .....	1
10	292685	Lockwasher .....	1
11	388296	Bolt .....	1

REF	PART NO.	NAME OF PART	QTY
12	!	..... Horn .....	1
12	@ 1329436	Horn .....	1
13	15235	Pin-Cotter .....	2
14	303136	Nut .....	2
15	292687	Lockwasher .....	2
16	389632	Axle .....	1
17	389630	Wheel/Bearings .....	1
17	1300306	Wheel .....	2
18	389635	Washer .....	4
19	389631	Bearing .....	4
20	389628	Fitting .....	2

! Last Used On S/N C138D-3370  
 @ First Used On S/N C138D-3371



## UNIT-MASTER DRIVE

Drive-Master .....	18 - 19
Motor-Traction .....	22
Unit-Master Drive .....	20 - 21