

888P/888P4A EXCAVATOR TABLE OF CONTENTS

DIVISION/SECTION	SECTION N°	FORM N°
1 GENERAL		
Sectional Index		7-33020
Safety, General Information and Torque Specifications.....	1001 *	8-86530
Specifications	1002	7-31291
(888P Serial Number : Prior to 6199)		
(888P4A Serial Number : Prior to 7699)		
Specifications	1002	7-40200
(888P Serial Number : 6201 and After)		
(888P4A Serial Number : 7701 and After)		
2 ENGINE		
Sectional Index		7-33030
Engine Removal and Installation.....	2000	7-31300
Radiator, Oil Cooler and Coolant Recovery System	2001	7-31310
Engine Specifications.....	2401	8-26063
Cylinder Head and Drive Train.....	2415	8-26073
Cylinder Block	2425	8-26084
Lubrication System.....	2445	8-26093
Cooling System	2455	8-26103
Turbocharger	2465	8-26110
Turbocharger Failure Analysis	2565	9-78235
3 FUEL SYSTEM		
Sectional Index		7-33040
Fuel System and Filters	3410	8-26131
Fuel Injection Pump and Drive Gear	3412	8-26143
Fuel Injectors.....	3413	8-26152
4 ELECTRICAL		
Sectional Index		7-33050
Electrical Schematics and Troubleshooting.....	4001 *	7-31331
Battery Testing, Maintenance and Booster Battery Connections	4002	7-31340
Starter Motor	4003	7-31350
Alternator.....	4004	7-31360
5 STEERING		
Sectional Index		7-33060
Steering Hand Pump.....	5002	7-31370
Steering Cylinder.....	5003	7-31380
(888P Serial Number : Prior to 6199)		
(888P4A Serial Number : Prior to 7699)		
Steering Cylinder.....	5003	7-40590
(888P Serial Number : 6201 and After)		
(888P4A Serial Number : 7701 and After)		

THIS TABLE OF CONTENTS REPLACES DON 7-32911

DIVISION/SECTION	SECTION N°	FORM N°
6 POWER TRAIN		
Sectional Index		7-33071
Swing Motor and Reduction Gears	6003	7-31390
Front Axle	6004	7-31400
(888P Serial Number : Prior to 6199)		
(888P4A Serial Number : Prior to 7699)		
Front Axle	6004	7-40120
(888P Serial Number : 6201 and After)		
(888P4A Serial Number : 7701 and After)		
Rear Axle	6005	7-31410
(888P Serial Number : Prior to 6199)		
(888P4A Serial Number : Prior to 7699)		
Rear Axle	6005	7-40130
(888P Serial Number : 6201 and After)		
(888P4A Serial Number : 7701 and After)		
Drive Shaft	6006	7-31420
(888P Serial Number : Prior to 6199)		
(888P4A Serial Number : Prior to 7699)		
Drive Shaft	6006	7-40140
(888P Serial Number : 6201 and After)		
(888P4A Serial Number : 7701 and After)		
Travel Motor	6007	7-31430
(888P Serial Number : Prior to 6199)		
(888P4A Serial Number : Prior to 7699)		
Travel Motor	6007	7-40150
(888P Serial Number : 6201 and After)		
(888P4A Serial Number : 7701 and After)		
Drop Box	6008	7-31440
(888P Serial Number : Prior to 6199)		
(888P4A Serial Number : Prior to 7699)		
Drop Box	6008	7-40160
(888P Serial Number : 6201 and After)		
(888P4A Serial Number : 7701 and After)		
7 BRAKES		
Sectional Index		7-33080
Service Brakes	7002	7-31450
(888P Serial Number : Prior to 6199)		
(888P4A Serial Number : Prior to 7699)		
Service Brakes	7002	7-40630
(888P Serial Number : 6201 and After)		
(888P4A Serial Number : 7701 and After)		
Parking Brake	7003	7-31460
(888P Serial Number : Prior to 6199)		
(888P4A Serial Number : Prior to 7699)		
Parking Brake	7003	7-40520
(888P Serial Number : 6201 and After)		
(888P4A Serial Number : 7701 and After)		

DIVISION/SECTION	SECTION N°	FORM N°
8 HYDRAULICS		
Sectional Index		7-33091
Hydraulic Components	8000	7-31470
Hydraulic Troubleshooting	8001 *	7-31480
(888P Serial Number : Prior to 6199)		
(888P4A Serial Number : Prior to 7699)		
Hydraulic Troubleshooting	8001 *	7-40340
(888P Serial Number : 6201 and After)		
(888P4A Serial Number : 7701 and After)		
Low Pressure Pump	8002	7-31490
High Pressure Pump	8003	7-31500
Attachment Valve	8004	7-31510
Drive Control Valve	8005	7-31520
(888P Serial Number : Prior to 6199)		
(888P4A Serial Number : Prior to 7699)		
Drive Control Valve	8005	7-40530
(888P Serial Number : 6201 and After)		
(888P4A Serial Number : 7701 and After)		
Option Control Valve	8006	7-31530
Stabilizer Valve	8007	7-31540
Swing Brake Release Valve	8008	7-31550
Swing Control Valve	8009	7-31560
Anti-Surge Valve	8010	7-31570
Hydraulic Swivel	8011	7-31580
(888P Serial Number : Prior to 6199)		
(888P4A Serial Number : Prior to 7699)		
Hydraulic Swivel	8011	7-40540
(888P Serial Number : 6201 and After)		
(888P4A Serial Number : 7701 and After)		
Drive Speed Limiter	8012	7-31590
Foot Brake and Travel Control Valve	8013	7-31600
Option Foot Control Valve	8014	7-31610
Hand Control Valves	8015	7-31620
Hydraulic Oil Tank	8016	7-31630
Forward and Reverse Travel Control Valve	8017	7-32640
Attachment Cylinders	8018	7-31640
Accumulators	8020	7-32400
Clamshell Swing Motor	8024	7-40100
Clamshell Swing Safety Valve	8025	7-40110
9 CHASSIS		
Sectional Index		7-33100
Upperstructure and Turntable Bearing	9001	7-31660
Boom Dipper and Bucket	9002	7-31670
Stabilizer and Dozer Blace	9003	7-31680
Cab Servicing	9004	7-31690

* Schematic Set Sections

**Thanks very much for your reading,
Want to get more information,
Please click here, Then get the complete
manual**

JustClickHere 

NOTE:

**If there is no response to click on the link above,
please download the PDF document first, and then
click on it.**

**Have any questions please write to me:
admin@servicemanualperfect.com**

Sectional Index

	SECTION NO.
1 GENERAL	
C Capacities	1002
E Electrical System Specifications	1002
Engine Specifications	1002
Engine Special Torques	1002
F Fuel Specifications	1002
G General Information	1001
H Hydraulic Fittings Special Torques	1001
Hydraulic Specifications	1002
R Run-In Instructions	1002
S Safety Warnings	1001
Standard Nut and Bolt Torques	1001
Steering Specifications	1002
T Transmission Specifications	1002

Sectional Index

		SECTION NO.
2	ENGINE	
B	Bearings	2425
	Belt Tensioner	2455
C	Camshaft	2425
	Cooling System (Engine)	
	Cleaning and Maintenance	2425
	Crankshaft Pressure Check (Blow By)	2425
	Crankshaft	2425
	Cylinder Block	2425
	Cylinder Head	2415
E	Engine Installation	2000
	Engine Removal	2000
	Exhaust Valves	2415
	Expansion Plug Replacement	
	Expansion Cylinder Block	2425
	Expansion Cylinder Head	2415
F	Fan Pulley	2455
	Flywheel	2425
I	Intake Valves	2415
L	Lubrication System	2445
O	Oil Filter Housing	2445
	Oil Pan	2445
	Oil Pressure Relief Valve	2445
	Oil Pump	2445
	Oil Seals	2425
P	Pistons	2425
R	Radiator and Oil Cooler Installation	2001
	Radiator and Oil Cooler Removal	2001
	Rocker Arms	2415
	Rods	2425
S	Sleeves	2425
T	Thermostat	2455
	Top Dead Centre (How to Locate)	2415
	Turbocharger	2465
	Turbocharger Failure Analysis	2565
V	Valve Guide Replacement	2415
	Valve Dye Pattern Analysis	2415
	Valve Seats	2415
	Valve Train	2415
W	Water Pump	2455

Section

1001

SAFETY, GENERAL INFORMATION
AND TORQUE SPECIFICATIONS

TABLE OF CONTENTS

SAFETY	3
GENERAL INFORMATION	5
STANDARD TORQUE DATA FOR NUTS AND BOLTS	6
TORQUE DATA FOR HYDRAULIC FITTINGS	7

SAFETY

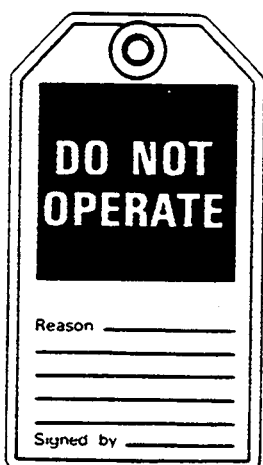


This symbol means ATTENTION! BECOME ALERT! YOUR SAFETY IS INVOLVED. The message that follows the symbol contains important information about safety. Carefully read the message. Make sure you fully understand the causes of possible injury or death.

1-1-C

To prevent injury always follow the Warning, Caution and Danger notes in this section and throughout the manual.

Put the warning tag shown below on the key for the keyswitch when servicing or repairing the machine. One warning tag is supplied with each machine. Additional tags Part Number 331-4614 are available from your service parts supplier.



B004

WARNING: Before starting engine, study Operator's Manual safety messages. Read all safety signs on machine. Clear the area of other persons. Learn and practice safe use of controls before operating.

! It is your responsibility to understand and follow manufacturers instructions on machine operation, service, and to observe pertinent laws and regulations. Operator's and Service Manuals may be obtained from your J.I. Case dealer

45-2

WARNING: If you wear clothing that is too loose or do not use the correct safety equipment for your job, you can be injured. Always wear clothing that will not catch on objects. Extra safety equipment that can be required includes hard hat, safety shoes, ear protection, eye or face protection, heavy gloves and reflector clothing

!

45-3-A

WARNING: Read the operator's manual to familiarize yourself with the correct control functions.

!

46-27

WARNING: When working in the area of the fan belt with the engine running, avoid loose clothing if possible, and use extreme caution.

!

35-4

WARNING: Operate the machine and equipment controls from the seat position only. Any other method could result in serious injury.

!

48-55

WARNING: When doing checks and tests on the equipment hydraulics, follow the procedures as they are written. DO NOT change the procedure.

!

47-44

WARNING: This is one man machine, no riders allowed.

!

35-8

WARNING: When putting the hydraulic cylinders on this machine through the necessary cycles to check operation or to remove air from a circuit, make sure all people are out of the way.

!

47-45



WARNING: Use insulated gloves or mittens when working with hot parts.

47-41A



CAUTION: Lower all attachments to the ground or use stands to safely support the attachments before you do any maintenance or service.

49-11



CAUTION: Pin sized and smaller streams of hydraulic oil under pressure can penetrate the skin and result in serious infection. If hydraulic oil under pressure does penetrate the skin, seek medical treatment immediately. Maintain all hoses and tubes in good condition. Make sure all connections are tight. Make a replacement of any tube or hose that is damaged or thought to be damaged. **DO NOT** use your hand to check for leaks, use a piece of cardboard or wood.

40-6-A



CAUTION: When removing hardened pins such as a pivot pin, or a hardened shaft, use a soft head (brass or bronze) hammer or use a driver made from brass or bronze and a steel head hammer.

46-17



CAUTION: When using a hammer to remove and install pivot pins or separate parts using compressed air or using a grinder, wear eye protection that completely encloses the eyes (approved goggles or other approved eye protectors).

46-13



CAUTION: Use suitable floor (service) jacks or chain hoist to raise wheels or tracks off the floor. Always block machine in place with suitable safety stands.

40-7-A



CAUTION: When servicing or repairing the machine. Keep the shop floor and operator's compartment and steps free of oil, water, grease, tools, etc. Use an oil absorbing material and or shop cloths as required. Use safe practices at all times.

40-8



CAUTION: Some components of this machine are very heavy. Use suitable lifting equipment or additional help as instructed in this Service Manual.

40-10



DANGER: Engine exhaust fumes can cause death. If it is necessary to start the engine in a closed place, remove the exhaust fumes from the area with an exhaust pipe extension. Open the doors and get outside air into the area.

48-56



DANGER: When the battery electrolyte is frozen, the battery can explode if (1), you try to charge the battery, or (2), you try to jump start and run the engine. To prevent the battery electrolyte from freezing, try to keep the battery at full charge. If you do not follow these instructions, you or others in the area can be injured.

48-35



DANGER: Batteries contain acid and explosive gas. Explosions can result from sparks, flames or wrong cable connections. To connect the jumper cables correctly to the battery of this machine see the Operator's Manual. Failure to follow these instructions can cause serious injury or death.

GENERAL INFORMATION

CLEANING

Clean all metal parts except bearings, in mineral spirits or by steam cleaning. Do not use caustic soda for steam cleaning. After cleaning dry, and put oil on all parts. Clean oil passages with compressed air. Clean bearings in kerosene, dry the bearings completely and put oil on the bearings.

INSPECTION

Check all parts when the parts are disassembled. Replace all parts that have wear or damage. Small scoring or grooves can be removed with a hone or crocus cloth. Complete visual inspection for indications of wear, pitting and the replacement of parts necessary will prevent early failures.

BEARINGS

Check bearings for easy action. If bearings have a loose fit or rough action replace the bearing. Wash bearings with a good solvent or kerosene and permit to air dry. **DO NOT DRY BEARINGS WITH COMPRESSED AIR.**

NEEDLE BEARINGS

Before you press needle bearings in a bore always remove any metal protrusions in the bore or edge of the bore. Before you press bearings into position put petroleum jelly on the inside and outside diameter of the bearings.

GEARS

Check all gears for wear and damage. Replace gears that have wear or damage.

OIL SEALS, O-RINGS AND GASKETS

Always install new oil seals, o-rings and gaskets. Put petroleum jelly on seals and o-rings.

SHAFTS

Check all shafts that have wear or damage. Check the bearing and oil seal surfaces of the shafts for damage.

SERVICE PARTS

Always install genuine Case service parts, when ordering refer to the Parts Catalog for the correct part number of the genuine Case replacement items. Failures due to the use of other than genuine Case replacement parts are not covered by warranty.

LUBRICATION

Only use the oils and lubricants specified in the Operator's or Service Manual. Failures due to the use of non specified oils and lubricants are not covered by warranty.

STANDARD TORQUE DATA FOR NUTS AND BOLTS

Where no special torque data is specified, the following torque figures should be applied. Threads should be lubricated with engine oil or chassis grease.

TORQUE SPECIFICATIONS \pm 10%									
SIZE	GRADE 8.8			GRADE 10.9			GRADE 12.9		
	lb-ft	Nm	kg/m	lb-ft	Nm	kg/m	lb-ft	Nm	kg/m
5 mm	4	5.5	0.56	5.5	7.5	0.76	6.6	9	0.92
6 mm	6.6	9	0.92	9.2	12.5	1.27	11	15	1.53
8 mm	16.5	22.5	2.3	23	31.5	3.2	26.5	36	3.67
10 mm	32	44	4.5	45	62	6.3	55	75	7.65
12 mm	57	77.5	7.9	81	110	11.2	95	130	13.2
14 mm	88	120	12.2	125	170	17.3	155	210	21.4
16 mm	140	190	19.4	195	265	27	236	320	32.6
18 mm	192	260	26.5	269	365	37.2	320	435	44.3
20 mm	273	370	37.7	383	520	53	457	620	63.2
22 mm	369	500	51	516	700	71.4	619	840	85.6
24 mm	471	640	65.2	665	900	92	796	1080	110
27 mm	702	950	97	996	1350	137.7	1195	1620	165.2
30 mm	955	1300	132.5	1328	1800	183.6	1593	2160	220.3

TORQUE DATA FOR HYDRAULIC FITTINGS

FITTINGS, CONNECTIONS AND PLUGS

Diameter x Pitch	Newton / Metres	Pounds / Feet	Kilogram / Metres
10 mm x 1	20	14.5	2
12 mm x 1.5	35	26	3.6
14 mm x 1.5	45	33.2	4.6
16 mm x 1.5	60	44	6.1
18 mm x 1.5	70	51	7.1
22 mm x 1.5	100	73	10.2
27 mm x 2	200	147	20.4
33 mm x 2	280	207	28.6
42 mm x 2	380	281	38.8

NUTS FOR TUBES AND HOSES

Diameter x Pitch	Newton / Metres	Pounds / Feet	Kilogram / Metres
16 mm x 1.5	20	14.5	2
18 mm x 1.5	35	26	3.6
20 mm x 1.45	45	33.2	4.6
24 mm x 1.5	60	44	6.1

FLANGES

Diameter x Pitch	Newton / Metres	Pounds / Feet	Kilogram / Metres
8 mm x 1.5	28	21	2.9
10 mm x 1.5	55	41	5.6
12 mm x 1.75	90	67	9.2
14 mm x 2	145	107	14.8
16 mm x 2	230	170	23.5



**Section
1002
SPECIFICATIONS**

1002

For 888P Excavators
(888P Serial Number: Prior to 6199)
(888P4A Serial Number: Prior to 7699)

TABLE OF CONTENTS

MODEL AND SERIAL NUMBERS.....	3
GENERAL SPECIFICATIONS	
Capacities.....	4
Drive Speed.....	4
Electrical System.....	4
Fluids and Lubricants.....	5
Hydraulic System.....	5
Tires.....	7
Weights.....	7
ENGINE SPECIFICATIONS	
IMPORTANT: <i>This engine was made using the metric measurement system. All measurements and checks must be made with metric tools to make sure of an accurate reading when inspecting parts.</i>	
Running-In Instructions.....	10
Engine Cooling System.....	11
Engine Lubrication.....	11
General Engine Specifications	
General.....	12
Pistons and Connecting Rods.....	12
Main Bearings.....	12
Engine Lubricating System.....	12
Fuel System.....	13
Detailed Engine Specifications	
Cylinder Block.....	14
Service Cylinder Sleeves.....	14
Pistons.....	14
Piston Pins.....	14
Piston Rings.....	15
Cylinder Head.....	15
Lifters.....	15
Connecting Rods.....	15
Crankshaft.....	16
Camshaft.....	17
Turbocharger.....	17
Gear Train.....	17
Rocker Arm Assembly.....	17
Intake Valves.....	18
Exhaust Valves.....	18
Valve Springs.....	18
Special Torques.....	19
GENERAL DIMENSIONS.....	22
TRANSPORT DIMENSIONS.....	27

MODEL AND SERIAL NUMBERS

When ordering parts or when requesting information or assistance, always give the identification numbers of your machine.

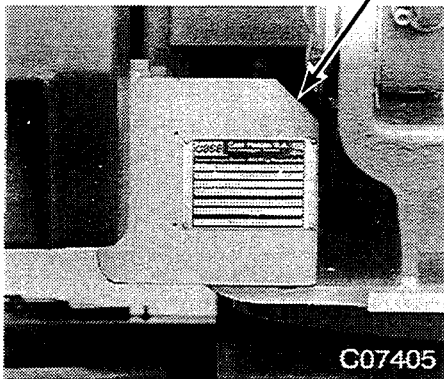
Write the model and serial numbers of your machine on the lines below.



C14426A

Machine Model Number

Machine Serial Number



C07405

Engine Serial Number

High Pressure Pump Serial Number

Low Pressure Pump Serial Number

GENERAL SPECIFICATIONS

Capacities

Engine Oil Capacity (with filter change).....	15.4 litres	3.38 gallons
Engine Cooling System (with cab heater).....	19.2 litres	4.22 gallons
Fuel Tank.....	247 litres	54.34 gallons
Hydraulic Oil Reservoir Capacity.....	130 litres	28.6 gallons
Total Hydraulic System Capacity.....	205 litres	45.1 gallons
Swing Reduction Gear Capacity.....	3.5 litres	6.16 pints
Front Axle Capacity.....	16 litres	3.52 gallons
Rear Axle Capacity.....	21 litres	5.5 gallons
Axle Reduction Gear Housing Capacity (each).....	2.5 litres	4.4 pints

NOTE: These capacities are only a guide to the quantities. Always use the dipstick, sight gauge or level plug to make sure that fluid levels are correct.

Drive speed

Drive speed.....	23 Km/h	23 Kph
------------------	---------	--------

Electrical System

Type of System.....	24 volts, negative ground
---------------------	---------------------------

Alternator

Manufacturer.....	Bosch
Output.....	28 volts at 45 amperes
Resistance of rotor winding.....	9.0 ohms
Resistance of stator winding.....	0.22 ohms
Minimum brush length.....	14 mm (0.55 inch)

Batteries

Number of batteries required.....	2
Voltage of each battery.....	12 volts
Reserve capacity.....	160 minutes
Cold cranking capacity at -17°C (0°F).....	800 amperes
Load for capacity (load) test.....	400 amperes

Starter Motor

Manufacturer.....	Bosch
No load test at 27°C (80°F)	
Volts.....	23 volts
Current draw.....	85 amperes maximum
Armature speed.....	7000 rpm minimum
Brush length.....	8.5 mm (0.3125 inch) minimum
Armature run-out.....	0.03 mm (0.001 inch) maximum
Commutator diameter.....	42.5 mm (1.74 inch) minimum
Armature end play.....	0.05 to 0.4 mm (0.002 to 0.15 inch)

Fluids and Lubricants

Batteries.....	Maintenance Free
Engine Coolant Solution.....	refer to page 10
Engine Lubrication.....	refer to page 10
Hydraulic Oil.....	Case Poclain Hydraulic Excavator Fluid
Axle Lubricant.....	Gear Lubricant EP 80W 90
Gear Box Lubricant.....	Gear Lubricant EP 80W 90
Swing Reduction Gear Lubricant.....	Gear Lubricant EP 80W 90
Turntable Ring Gear Lubricant.....	Case IH molydisulfide grease
Grease Fitting Lubricant.....	Case IH molydisulfide grease

Hydraulic System

Engine no load governed speed.....	2140 to 2260 rpm
Engine idle speed.....	900 rpm

PRESSURE SETTINGS:

Torque regulator valve (R.C) 120 L/mn Engine speed 2020 rpm at a pressure of.....	275 bar	3988 psi
Travel flow cut-off valve (A.D.LS2).....	405 to 415 bar	5873 to 6018 psi
Attachment flow cut-off valve (A.D.LS1).....	360 to 370 bar	5200 to 5365 psi
Load Sensing (L.S).....	18 to 19 bar	261 to 276 psi
Attachment valve bank main relief valve.....	425 to 450 bar	6163 to 6525 psi
Circuit relief valves:		
Boom: raising.....	380 to 405 bar	5510 to 5873 psi
Boom: lowering.....	390 to 425 bar	5655 to 6163 psi
Bucket: opening, closing.....	380 to 405 bar	5510 to 5873 psi
Dipper: extension, retracting.....	380 to 405 bar	5510 to 5873 psi
Swing: right, left.....	350 to 360 bar	5075 to 5220 psi
Travel: forward drive, reverse drive.....	420 to 435 bar	6090 to 6308 psi
Stabilizers and dozer blade: lowering.....	380 to 400 bar	5510 to 5800 psi
Stabilizers and dozer blade: raising.....	360 to 390 bar	5220 to 5655 psi
P4A Excavator stabilizers: raising and lowering.....	380 to 400 bar	5510 to 5800 psi
Boom and dipper load holding valve.....	390 to 410 bar	5655 to 5945 psi
Boom and dipper safety valve.....	390 to 410 bar	5655 to 5945 psi
Low flow (clamshell swing).....	130 to 150 bar	1885 to 2175 psi
Offset boom.....	180 to 200 bar	2610 to 2900 psi
Remote boom adjustment.....	180 to 200 bar	2610 to 2900 psi
Servo-unit pilot circuit.....	34 to 36 bar	493 to 522 psi
Travel pilot circuit.....	23 to 24 bar	334 to 348 psi
Stabilizer sequence:		
Stabilizer beam lowering.....	240 to 260 bar	3480 to 3770 psi
Stabilizer shoe closing.....	340 to 370 bar	4930 to 5365 psi
Dozer blade lowering sequence.....	340 to 360 bar	4930 to 5220 psi
Dozer blade ground pressure limiter.....	100 bar	1450 psi
Hydraulic drive motor regulation sequence.....	200 to 210 bar	2900 to 3045 psi
Stabilizer shoe opening pressure.....	80 to 120 bar	1160 to 1740 psi

Steering:

Safety valve.....	175 to 185 bar	2538 to 2683 psi
Relief valves.....	200 to 220 bar	2900 to 3190 psi
Brake module make-and-break.....	120 to 160 bar	1740 to 2320 psi
Service brake pressure.....	45 to 60 bar	653 to 870 psi
Parking brake pressure.....	120 to 160 bar	1740 to 2320 psi
Accumulator pressure.....	65 bar	943 psi
Max. high pressure pump.....	255 L/mn	56.1 gpm
Flow setting valve rates:		
Boom, raising.....	168 to 175 L/mn	36.95 to 38.49 gpm
Boom, lowering.....	35 to 55 L/mn	7.6 to 12.9 gpm
Bucket, closing.....	140 to 150 L/mn	30.79 to 32.99 gpm
Bucket, opening.....	130 to 150 L/mn	28.59 to 32.99 gpm
Dipper, retracting.....	158 to 165 L/mn	34.75 to 38.29 gpm
Dipper, extension.....	150 to 165 L/mn	32.99 to 38.29 gpm
Travel, forward drive.....	166 to 170 L/mn	36.51 to 37.39 gpm
Travel, reverse drive.....	163 to 170 L/mn	35.85 to 37.39 gpm
Stabilizers and dozer blade: boom raising and lowering.....	45 to 55 L/mn	9.8 to 12.9 gpm
Stabilizers: shoe opening.....	18 to 22 L/mn	3.9 to 4.8 gpm
Stabilizers: shoe closing.....	45 to 55 L/mn	9.8 to 12.9 gpm
P4A excavator stabilizers: lowering.....	177 to 183 L/mn	38.93 to 40.25 gpm
P4A excavator stabilizers: raising.....	85 to 95 L/mn	18.69 to 20.89 gpm
Options.....	25 to 35 L/mn	5.49 to 7.6 gpm
Stabilizer shoe closing speed:.....		5 to 7 secondes
Thermostat controlled valve:		
Starts to close.....	40°C	106°F
Fully closed.....	50°C	126°F

Tires

(Model 888P - 888PL - 888P2A - 888P2AL)

Four wheels Fitted.....18 - 19.5 XF
 Eight wheels Fitted.....10 - 22.5 or 10.00 - 20

(Model 888P4A)

Eight wheels Fitted.....10 - 22.5 XM37

Weights

Excavator with: monoblock boom, 2,10 m (83 inch) dipper and 760 L (1 cu.yd.) bucket:

Model 888P.....	13700 Kg	30140 lbs
Model 888PL.....	14300 Kg	31460 lbs
Model 888P2A.....	14500 Kg	31900 lbs
Model 888P2AL.....	15100 Kg	33220 lbs

Excavator with: adjustable boom, 2,10 m (83 inch) dipper and 760 L (1 cu.yd.) bucket:

Model 888P.....	14050 Kg	30910 lbs
Model 888PL.....	14650 Kg	32230 lbs
Model 888p2A.....	14850 Kg	32670 lbs
Model 888P2AL.....	15450 Kg	33990 lbs

Excavator with: offset boom, 2,10 m (83 inch) dipper and 760 L (1 cu.yd.) bucket:

Model 888P.....	14255 Kg	31361 lbs
Model 888PL.....	14855 Kg	32681 lbs
Model 888P2A.....	15055 Kg	33121 lbs
Model 888P2AL.....	15655 Kg	34441 lbs

Excavator with: articulated boom, 2,10 m (83 inch) dipper and 760 L (1 cu.yd.) bucket

Model 888P.....	14380 Kg	31636 lbs
Model 888PL.....	14980 Kg	32956 lbs
Model 888P2A.....	15180 Kg	33396 lbs
Model 888P2AL.....	15780 Kg	34716 lbs

Excavator with: boom, 3,90 m (154 inch) dipper and five-tine iron clamshell

Model 888P4A (only).....	15800 Kg	34760 lbs
--------------------------	----------	-----------

Excavator with: boom, 4,30 m (170 inch) dipper and five-tine iron clamshell

Model 888P4A (only).....	15830 Kg	34826 lbs
--------------------------	----------	-----------

ATTACHMENTS

Models 888P, 888PL, 888P2AL

Boom (with dipper cylinder)

Monoblock.....	1085 Kg	2387 lbs
Adjustable.....	1435 Kg	3157 lbs
Offset.....	1640 Kg	3608 lbs
Articulated.....	1765 Kg	3883 lbs

Dipper (with yoke, rod and bucket cylinder)

1,60 m (63 inch).....	655 Kg	1441 lbs
2,10 m (83 inch).....	675 Kg	1485 lbs
2,70 m (106 inch).....	765 Kg	1683 lbs
3,10 m (122 inch).....	755 Kg	1661 lbs