



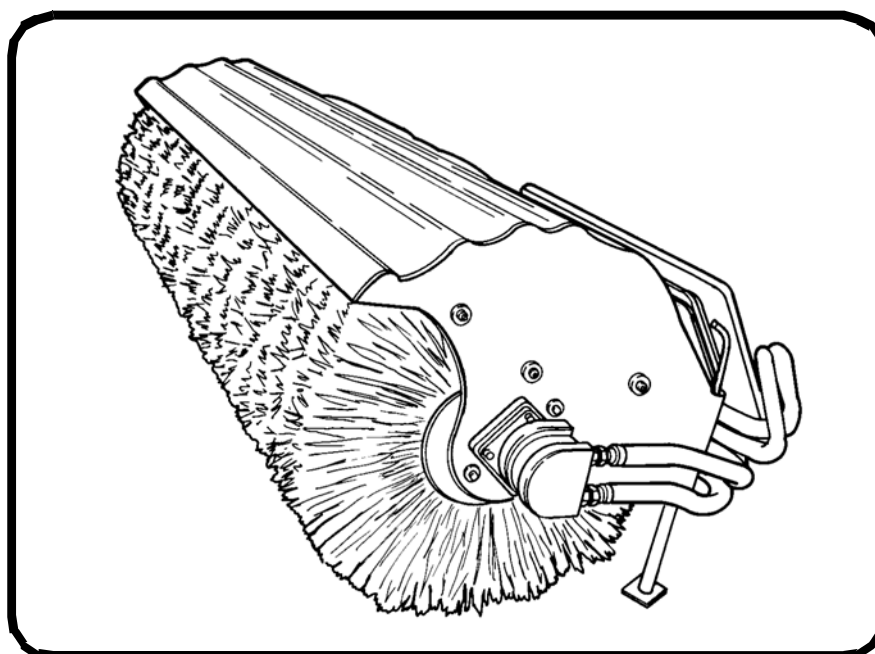
---

# Service Manual

## Angle Broom

---

S/N 068700101 & Above  
S/N 231000101 & Above  
(48 IN) S/N 700000101 & Above  
(68 Angle Broom) S/N 231311101 & Above  
(68 IN) S/N 690100101 & Above  
(68 IN) S/N 797301001 & Above  
(84 IN) S/N 055000101 & Above  
(84 Angle Broom) S/N 231411101 & Above





# MAINTENANCE SAFETY



## WARNING

Instructions are necessary before operating or servicing machine. Read and understand the Operation & Maintenance Manual, Operator's Handbook and signs (decals) on machine. Follow warnings and instructions in the manuals when making repairs, adjustments or servicing. Check for correct function after adjustments, repairs or service. Untrained operators and failure to follow instructions can cause injury or death.

W-2003-0807











**Safety Alert Symbol:** This symbol with a warning statement, means: "Warning, be alert! Your safety is involved!" Carefully read the message that follows.

**CORRECT**



P-90216

-  **Never service attachments / implements without instructions. See Operation & Maintenance Manual and Attachment / Implement Service Manual.**
-  **Cleaning and maintenance are required daily.**
-  **Never service or adjust attachment / implement with the engine running unless instructed to do so in manual.**
-  **Always lower the attachment / implement to the ground before lubricating or servicing.**
-  **Avoid contact with leaking hydraulic fluid or diesel fuel under pressure. It can penetrate skin or eyes.**
-  **Stop, cool and clean engine of flammable materials before checking fluids.**
-  **Keep body, loose objects and clothing away from moving parts, electrical contacts, hot parts and exhaust.**
-  **Safety glasses are needed for eye protection from electrical arcs, battery acid, compressed springs, fluids under pressure and flying debris or when tools are used. Use eye protection approved for type of welding.**

Dealer Copy -- Not for Resale

MSW30-0409

**Thanks very much for your reading,  
Want to get more information,  
Please click here, Then get the complete  
manual**

**JustClickHere** 

**NOTE:**

**If there is no response to click on the link above,  
please download the PDF document first, and then  
click on it.**

**Have any questions please write to me:  
[admin@servicemanualperfect.com](mailto:admin@servicemanualperfect.com)**



**Bobcat®**

Dealer Copy -- Not for Resale

## CONTENTS

SAFETY AND MAINTENANCE .....	10-01
HYDRAULIC SYSTEM .....	20-01
MAINFRAME .....	30-01
SPECIFICATIONS .....	SPEC-01
ALPHABETICAL INDEX .....	INDEX-01



**Bobcat®**

Dealer Copy -- Not for Resale

## FOREWORD

SERIAL NUMBER LOCATION .....	1-7
Attachment Serial Number .....	1-7
DELIVERY REPORT .....	1-7
ATTACHMENT IDENTIFICATION .....	1-8
(S/N 068700101 & Above) .....	1-8
(S/N 797301001 & Above) .....	1-9
(S/N 690100101 & Above) .....	1-10
(S/N 055000101 & Above), (S/N 231000101 & Above), (S/N 231311101 & Above) AND (S/N 231411101 & Above) .....	1-11
(S/N 700000101 & Above) .....	1-12





SERIAL NUMBER LOCATION

Attachment Serial Number

Figure 1

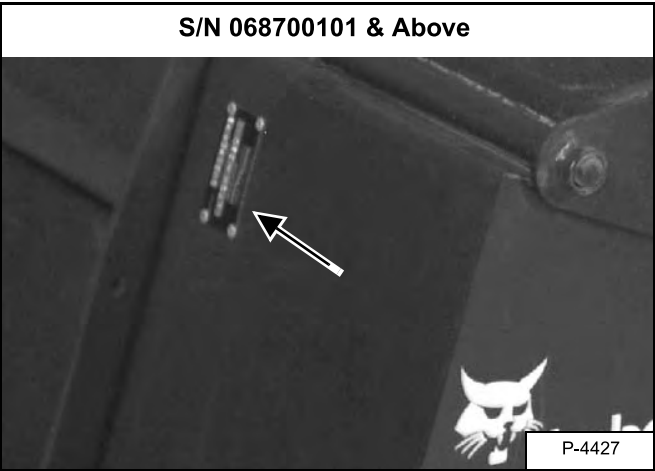


Figure 2

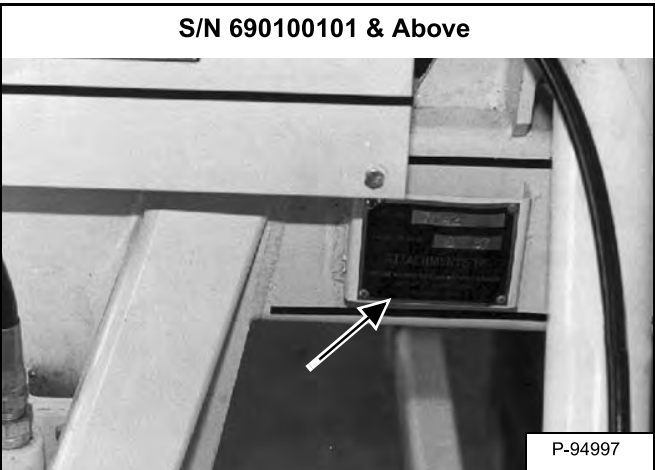


Figure 3

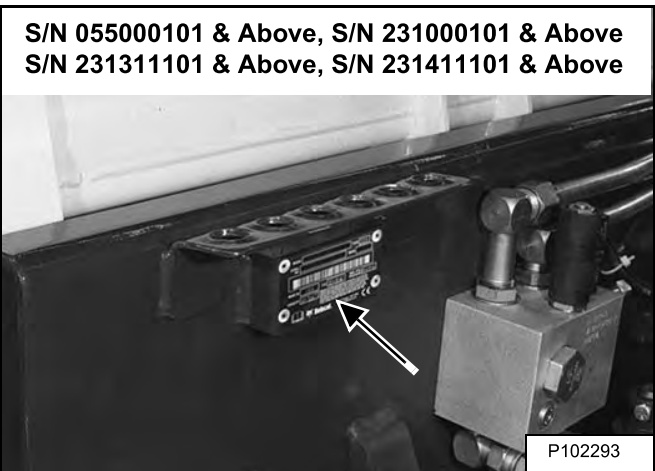
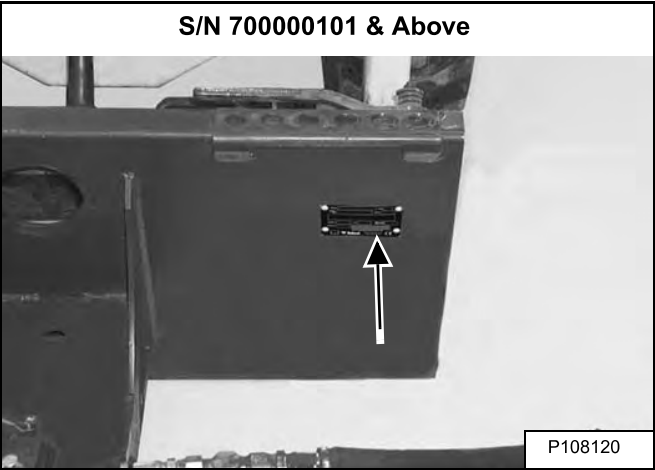


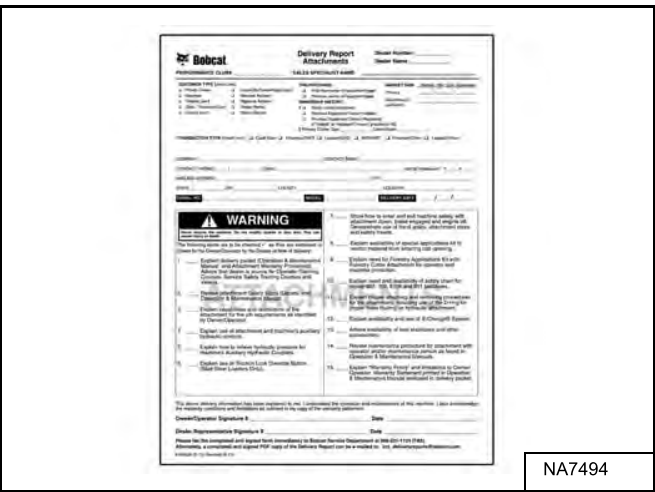
Figure 4



Always use the serial number [Figure 1], [Figure 2], [Figure 3] and [Figure 4] of the angle broom when requesting service information or when ordering parts. Early or later models (identification made by serial number) may use different parts, or it may be necessary to use a different procedure in doing a specific service operation.

DELIVERY REPORT

Figure 5

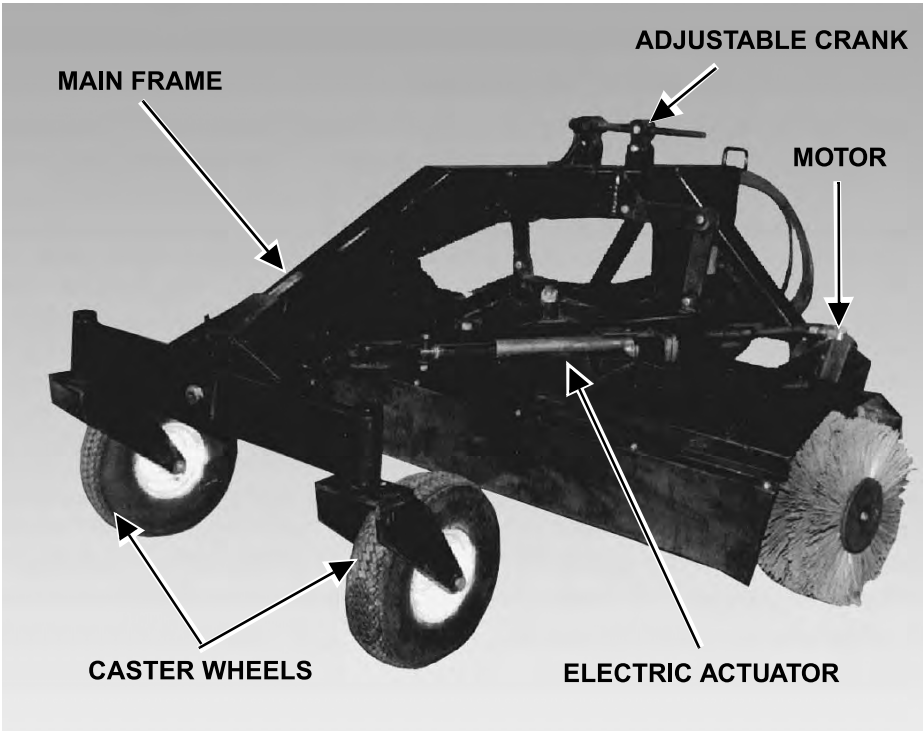


The delivery report [Figure 5] must be completed by the dealer and signed by the owner or operator when the Bobcat angle broom is delivered. An explanation of the form must be given to the owner.

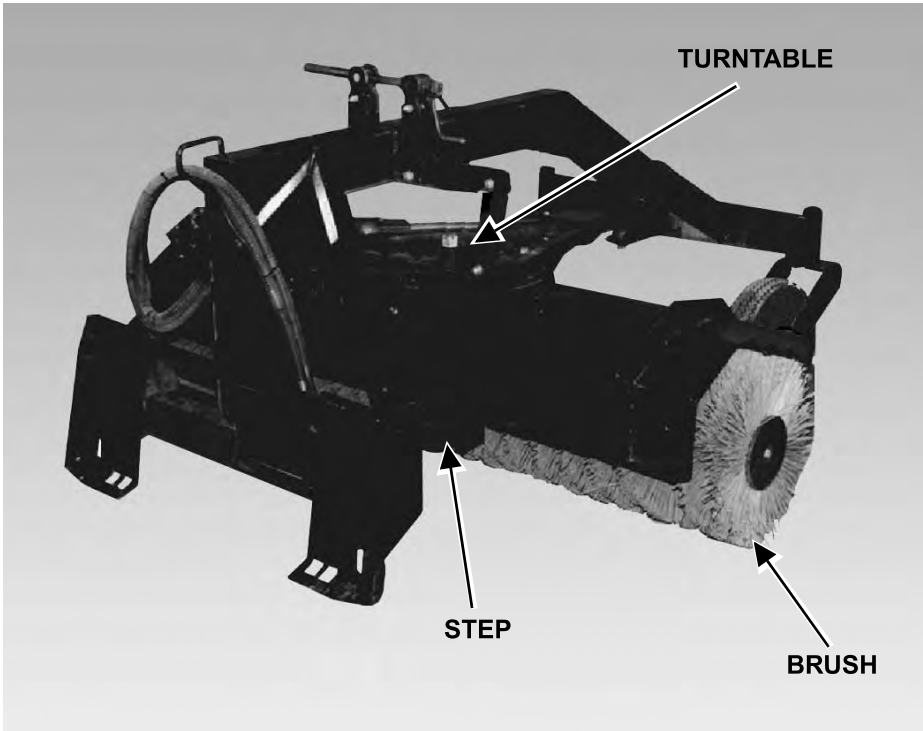
Dealer Copy -- Not for Resale

ATTACHMENT IDENTIFICATION

(S/N 068700101 & Above)



P-96014

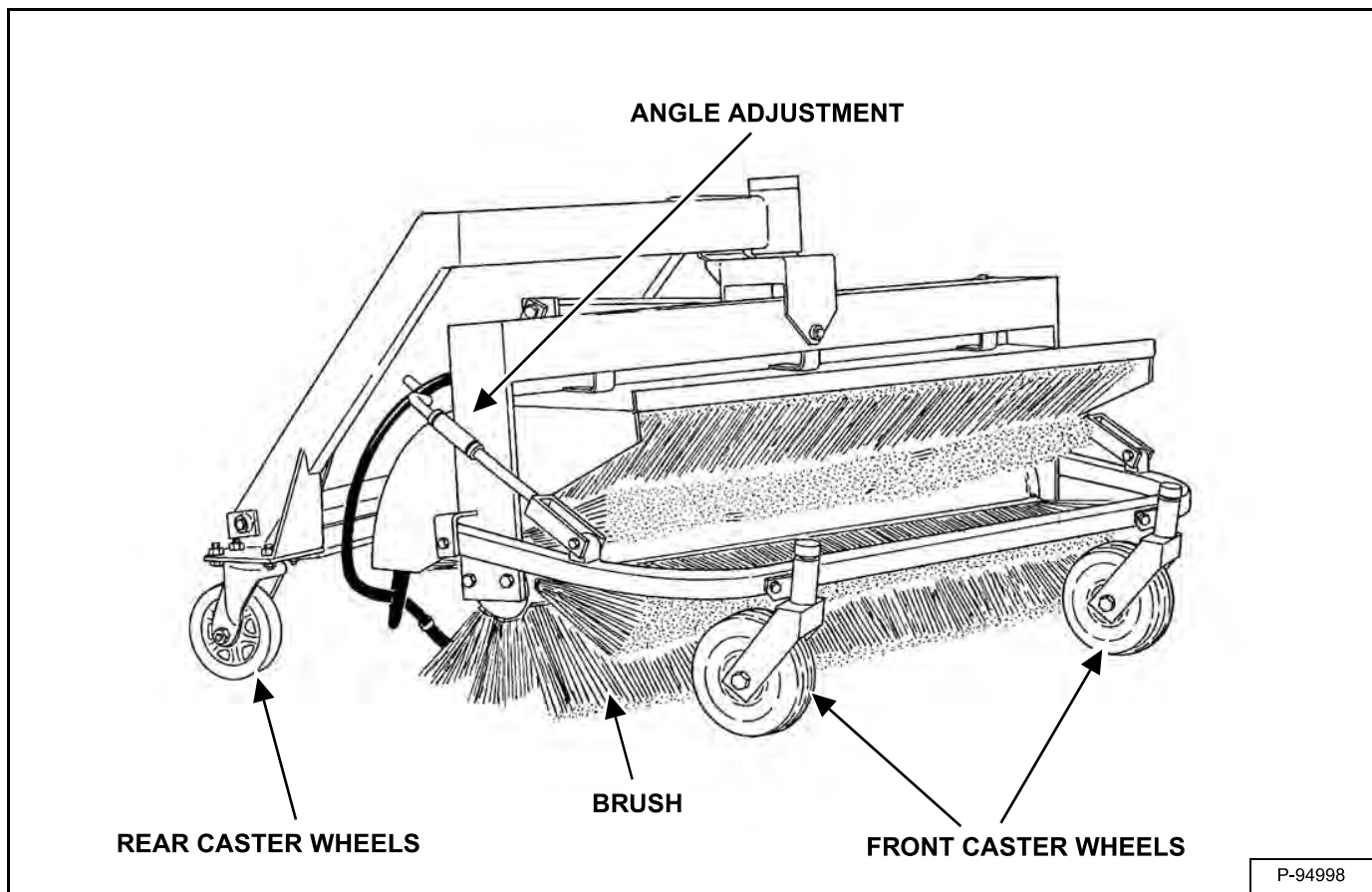


P-96015

Dealer Copy -- Not for Resale

## ATTACHMENT IDENTIFICATION (CONT'D)

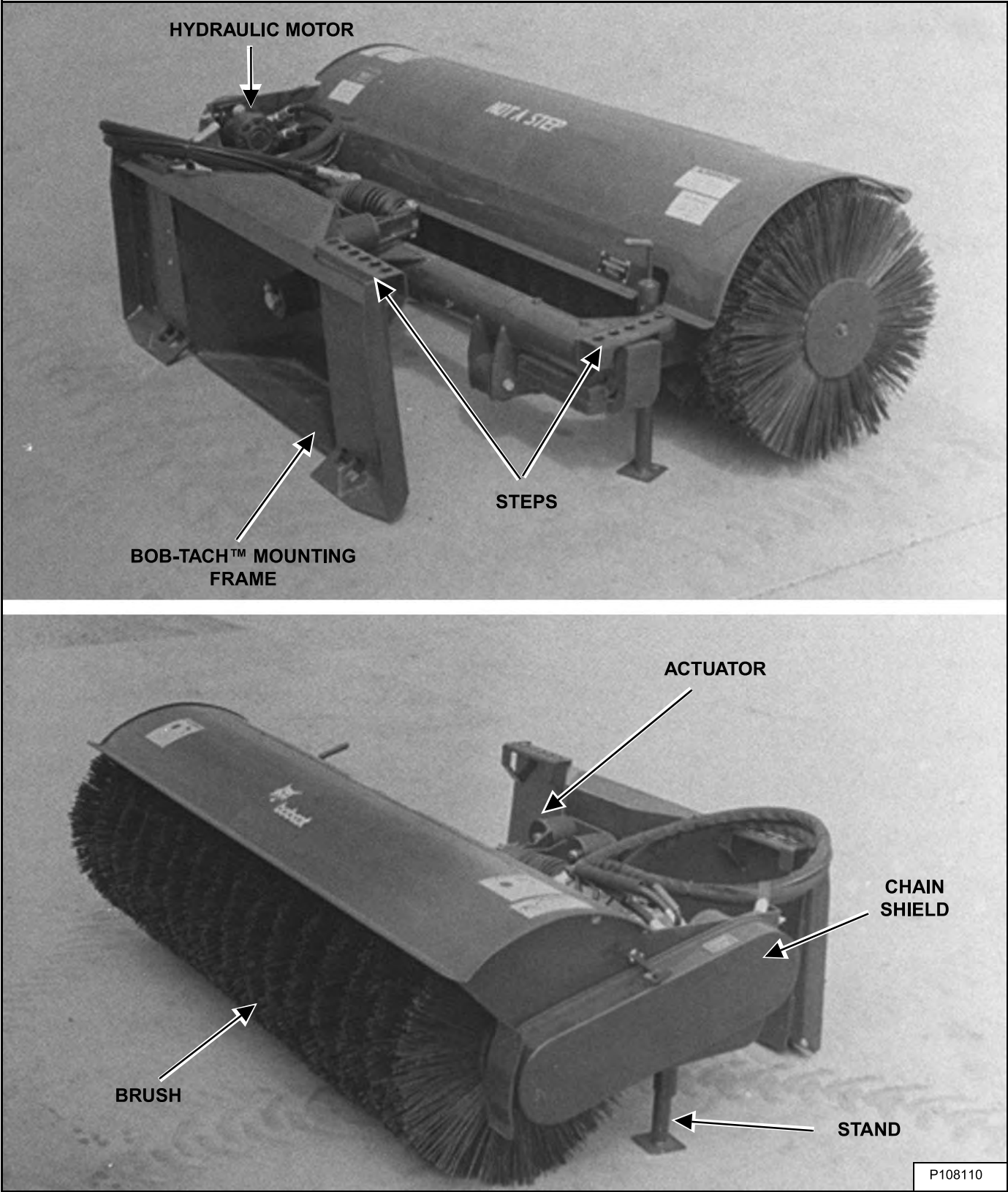
(S/N 797301001 & Above)



Dealer Copy -- Not for Resale

ATTACHMENT IDENTIFICATION (CONT'D)

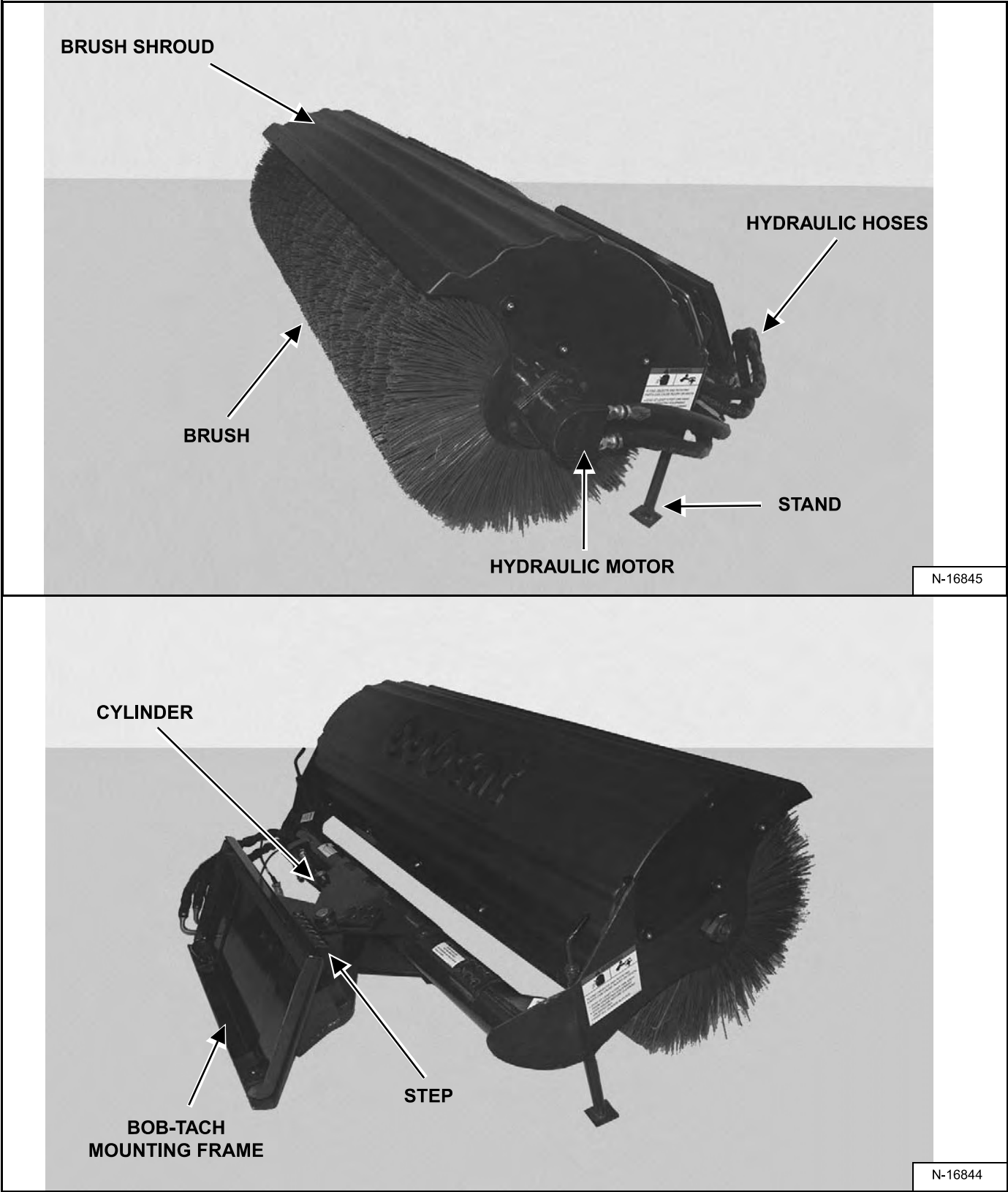
(S/N 690100101 & Above)



Dealer Copy -- Not for Resale

ATTACHMENT IDENTIFICATION (CONT'D)

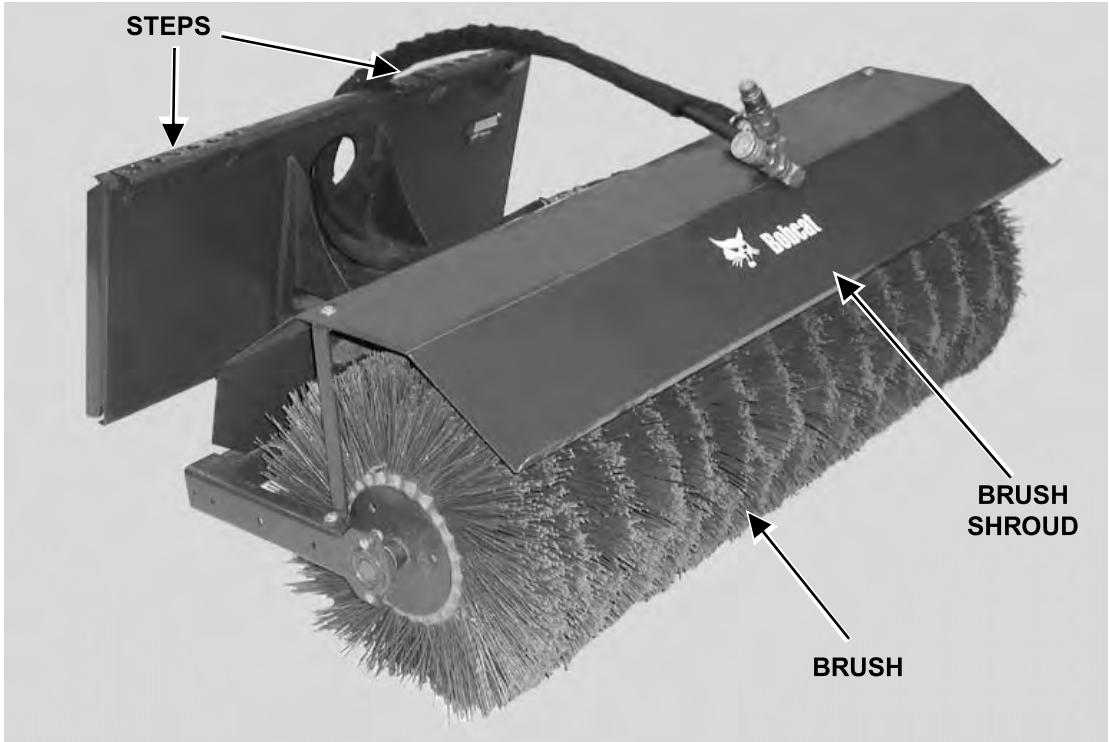
(S/N 055000101 & Above), (S/N 231000101 & Above), (S/N 231311101 & Above) AND (S/N 231411101 & Above)



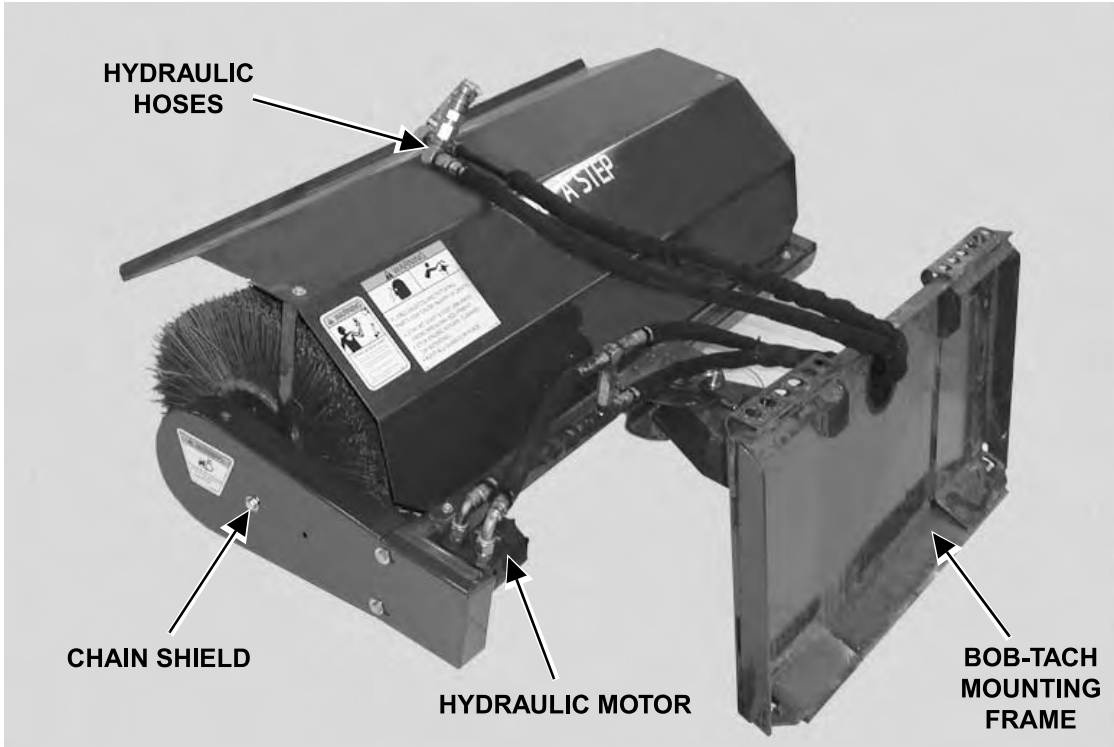
Dealer Copy -- Not for Resale

ATTACHMENT IDENTIFICATION (CONT'D)

(S/N 700000101 & Above)



P-22402



P-22400

Dealer Copy -- Not for Resale

## SAFETY AND MAINTENANCE

LUBRICATING THE ATTACHMENT .....	10-10-1
Lubrication Locations (S/N 797301001 & Above) .....	10-10-1
Lubrication Locations (S/N 068700101 & Above) .....	10-10-2
Lubrication Locations (S/N 690100101 & Above) .....	10-10-3
Lubrication Locations (S/N 055000101 & Above, S/N 231000101 & Above, S/N 231311101 & Above AND S/N 231411101 & Above) .....	10-10-4
Lubrication Locations (S/N 700000101 & Above) .....	10-10-4
DAILY INSPECTION .....	10-20-1
Attachment Mounting Frame .....	10-20-1
Bob-Tach .....	10-20-1
TROUBLESHOOTING .....	10-30-1
Chart .....	10-30-1





**Bobcat®**

Dealer Copy -- Not for Resale

LUBRICATING THE ATTACHMENT

Always use a good quality lithium base multipurpose grease when lubricating the angle broom. Apply the lubricant until extra grease shows.

IMPORTANT

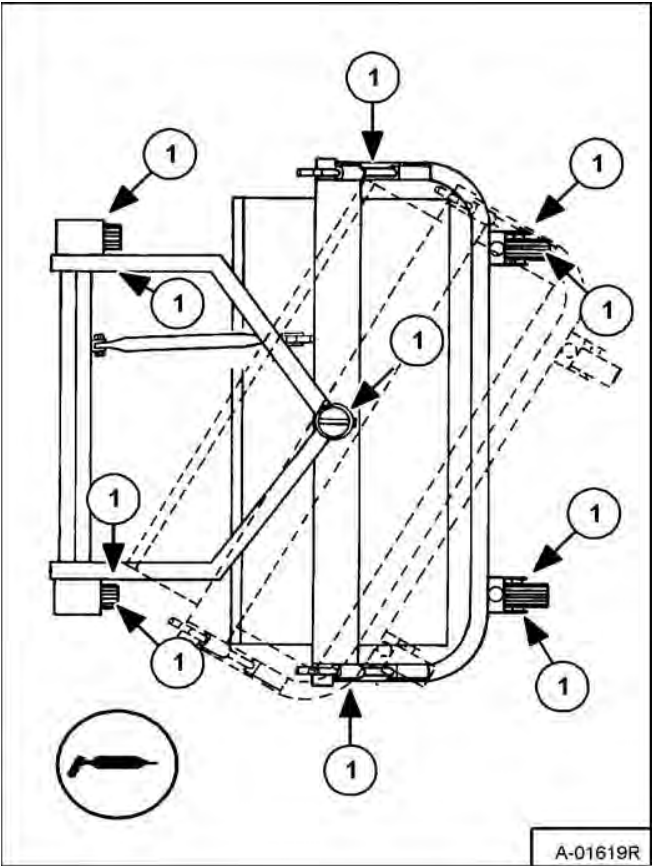
Fluid such as engine oil, hydraulic fluid, coolants, grease, etc. must be disposed of in an environmentally safe manner. Some regulations require that certain spills and leaks on the ground must be cleaned in a specific manner. See local, state and federal regulations for the correct disposal.

I-2067-0499

Lubrication Locations (S/N 797301001 & Above)

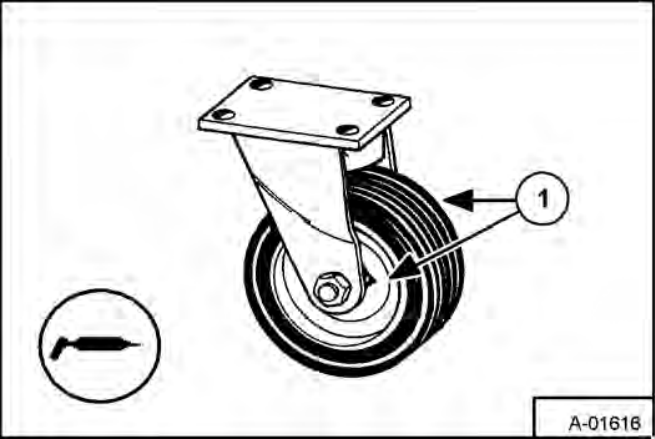
Lubricate the following grease fittings **EVERY 7 - 10 HOURS**:

Figure 10-10-1



There are eleven grease fittings (Item 1) [Figure 10-10-1].

Figure 10-10-2



The rear caster wheels each have two fittings (Item 1) [Figure 10-10-2]. The height adjustment cranks need only occasional lubrication.

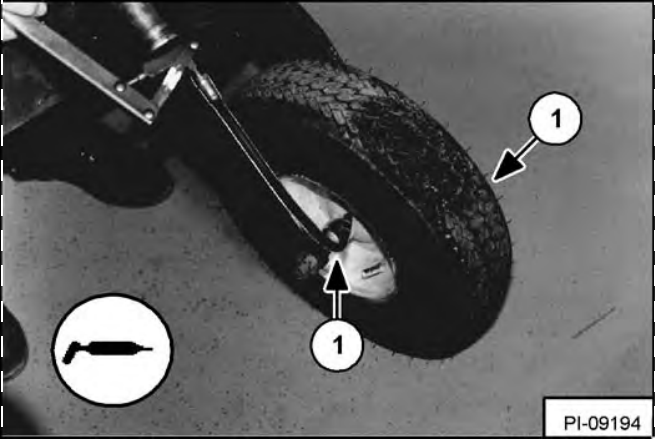
Dealer Copy -- Not for Resale

LUBRICATING THE ATTACHMENT (CONT'D)

Lubrication Locations (S/N 068700101 & Above)

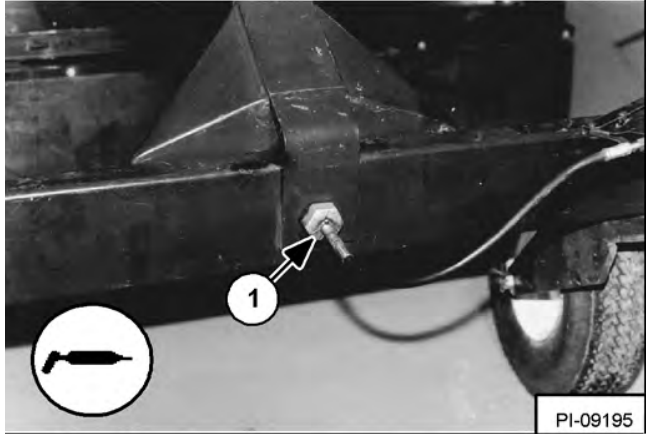
Lubricate the following grease fittings **EVERY 8 - 10 HOURS**:

Figure 10-10-3



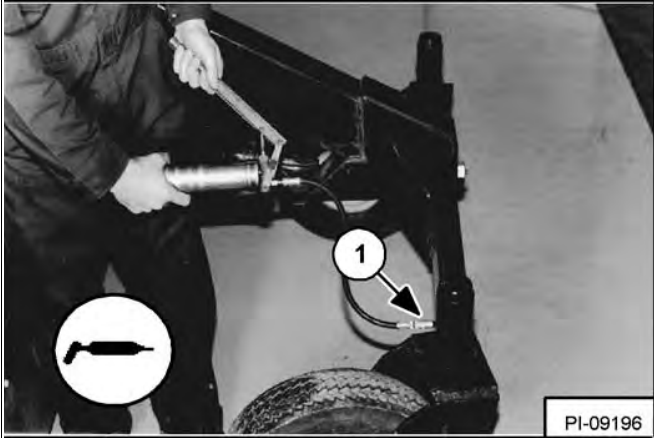
The front wheel bushings (2 fittings) (Item 1) [Figure 10-10-3].

Figure 10-10-4



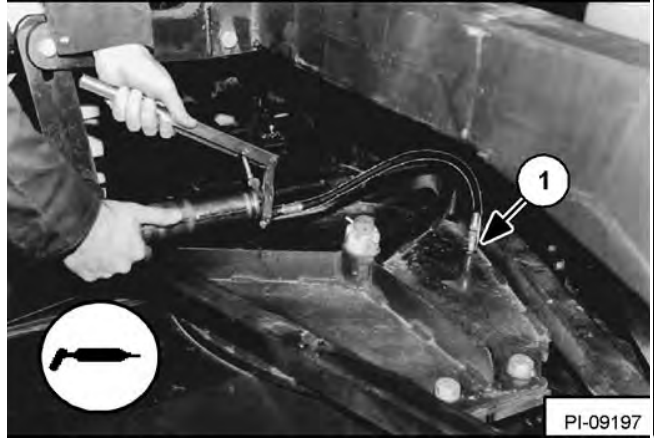
The bolster (1 fitting) (Item 1) [Figure 10-10-4].

Figure 10-10-5



The caster pivots (2 fittings) (Item 1) [Figure 10-10-5].

Figure 10-10-6



The angle pivot (2 fittings) (Item 1) [Figure 10-10-6].