

R30S BACKHOE

S/N A2HH 00101
& above

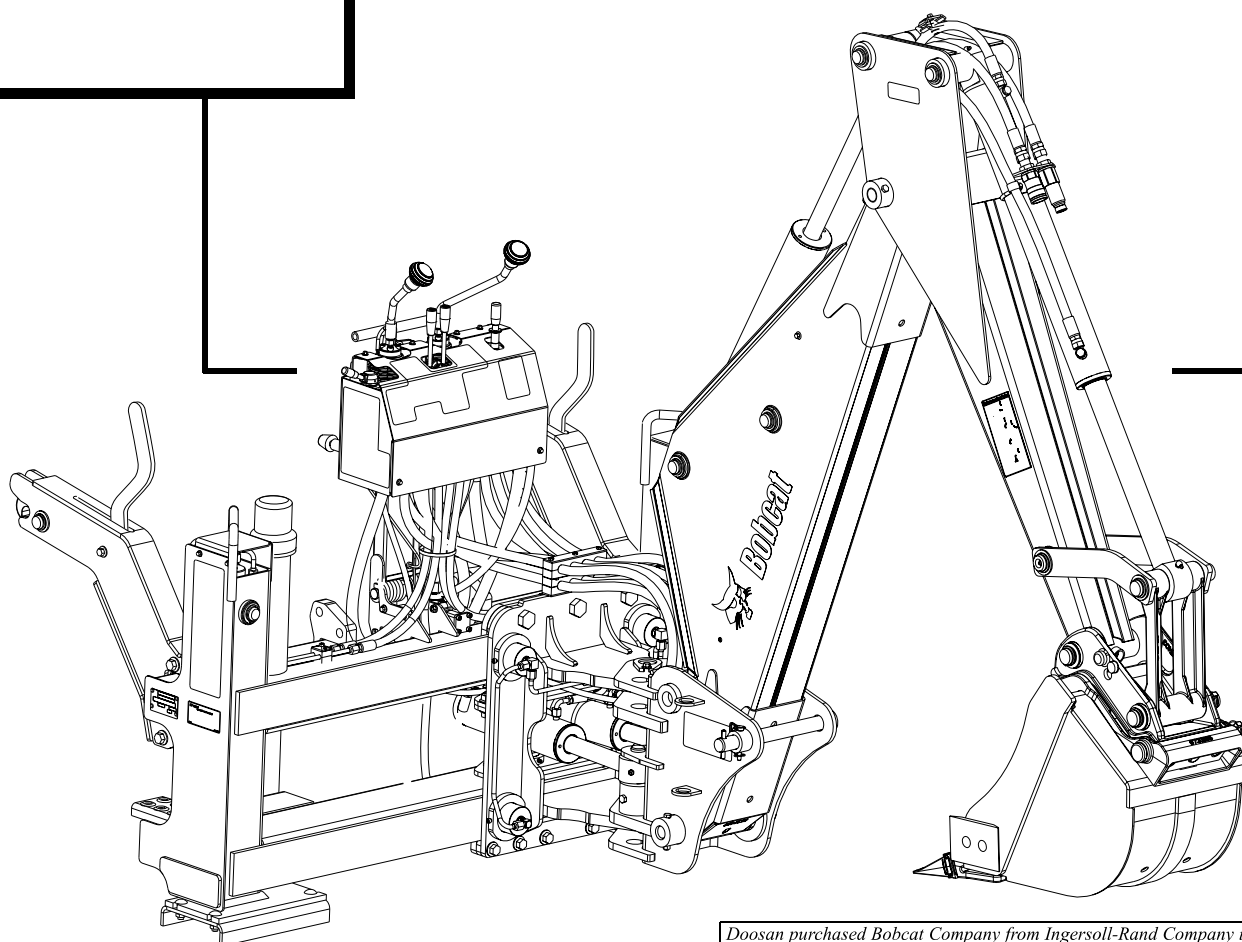
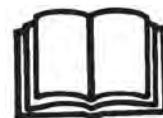
R35S BACKHOE

S/N A36S 00101
& above



Bobcat®

Service Manual



Doosan purchased Bobcat Company from Ingersoll-Rand Company in 2007. Any reference to Ingersoll-Rand Company or use of trademarks, service marks, logos, or other proprietary identifying marks belonging to Ingersoll-Rand Company in this manual is historical or nominative in nature, and is not meant to suggest a current affiliation between Ingersoll-Rand Company and Bobcat Company or the products of either.



OPERATOR SAFETY WARNINGS



WARNING

Operator must have instructions before running the machine. Untrained operators can cause injury or death.

W-2001-1285



Safety Alert Symbol: This symbol with a warning statement, means: "Warning, be alert! Your safety is involved!" Carefully read the message that follows.

CORRECT



S3979



Never use the loader without instructions. See machine signs (decals), Operation & Maintenance Manual, and Operator's Handbook.

CORRECT



S3970

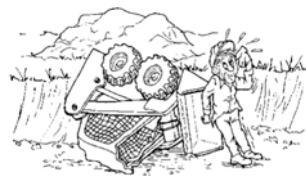


Always use the seat bar and fasten seat belt snugly.



Always keep feet on the foot pedals or footrests when operating loader.

CORRECT



S3971



Never use loader without operator cab with ROPS and FOPS approval. Fasten your seat belt.

WRONG



S3972



Never use loader as man lift or elevating device for personnel.

WRONG



S3973



Do not use loader in atmosphere with explosive dust, explosive gas, or where exhaust can contact flammable material.

WRONG



S3974



Never carry riders.



Keep bystanders away from work area.

WRONG



S3975



Always carry bucket or attachments as low as possible.



Do not travel or turn with lift arms up.



Load, unload, and turn on flat level ground.

WRONG



S3976



Never exceed Rated Operating Capacity.

WRONG



S3977

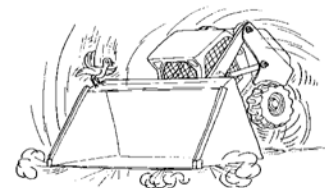


Never leave loader with engine running or with lift arms up.



To park, engage parking brake and put attachment flat on the ground.

WRONG



S3978



Never modify equipment.



Use only attachments approved by Bobcat Company for this model loader.

SAFETY EQUIPMENT

The Bobcat Loader must be equipped with safety items necessary for each job. Ask your dealer for information on the safe use of attachments and accessories.

1. SEAT BELT: Check belt fasteners and check for damaged webbing or buckle.
2. SEAT BAR: When up, it must lock the loader controls.
3. OPERATOR CAB (ROPS and FOPS): It must be on the loader with all fasteners tight.
4. HANDBOOK: Must be in the cab.
5. SAFETY SIGNS (DECALS): Replace if damaged.
6. SAFETY TREADS: Replace if damaged.
7. GRAB HANDLES: Replace if damaged.
8. LIFT ARM SUPPORT DEVICE: Replace if damaged.
9. PARKING BRAKE
10. BOBCAT INTERLOCK CONTROL SYSTEM (BICS)

FOREWORD

DELIVERY REPORT.....	III
IDENTIFICATION	V
SERIAL NUMBER LOCATION	IV



Bobcat®

Dealer Conv -- Not for Resale

**Thanks very much for your reading,
Want to get more information,
Please click here, Then get the complete
manual**

JustClickHere 

NOTE:

**If there is no response to click on the link above,
please download the PDF document first, and then
click on it.**

**Have any questions please write to me:
admin@servicemanualperfect.com**

DELIVERY REPORT

The Delivery Report must be filled out by the dealer and signed by the owner or the operator when the Bobcat backhoe is delivered. An explanation must be given to the owner. Make sure form **[Figure 1]** is filled out completely.

Figure 1

The image shows a sample form for a 'DELIVERY REPORT'. At the top right, the title 'DELIVERY REPORT' is printed in a bold, sans-serif font. Below the title, there is a large rectangular area for text, divided into two columns by a vertical line. The left column contains a 'WARNING' section, which is a black rectangle with the word 'WARNING' in white, bold, sans-serif font. Below this, there are several lines of horizontal lines for text entry. The right column also contains several lines of horizontal lines for text entry. At the bottom of the form, there are more lines of horizontal lines for text entry.

SERIAL NUMBER LOCATION

Always use the serial number [Figure 2] of the backhoe when requesting information or ordering parts. Replacement parts or procedures may vary between different models (identification based on serial number).

Figure 2

+

MODEL

+

SERIAL NO.


ASSEMBLED IN

WEIGHT

+

YEAR OF CONSTRUCTION

+

 **Bobcat.** West Fargo, ND 58078 USA
www.bobcat.com


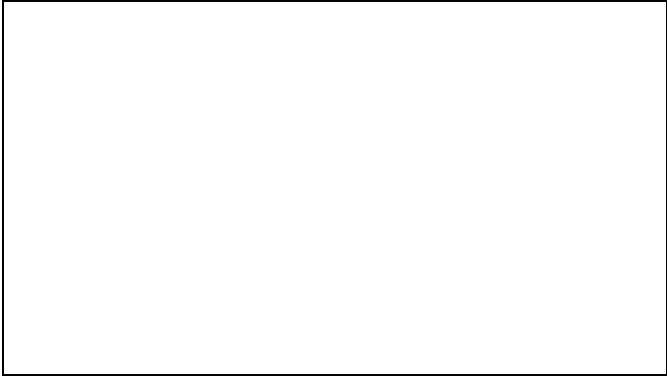


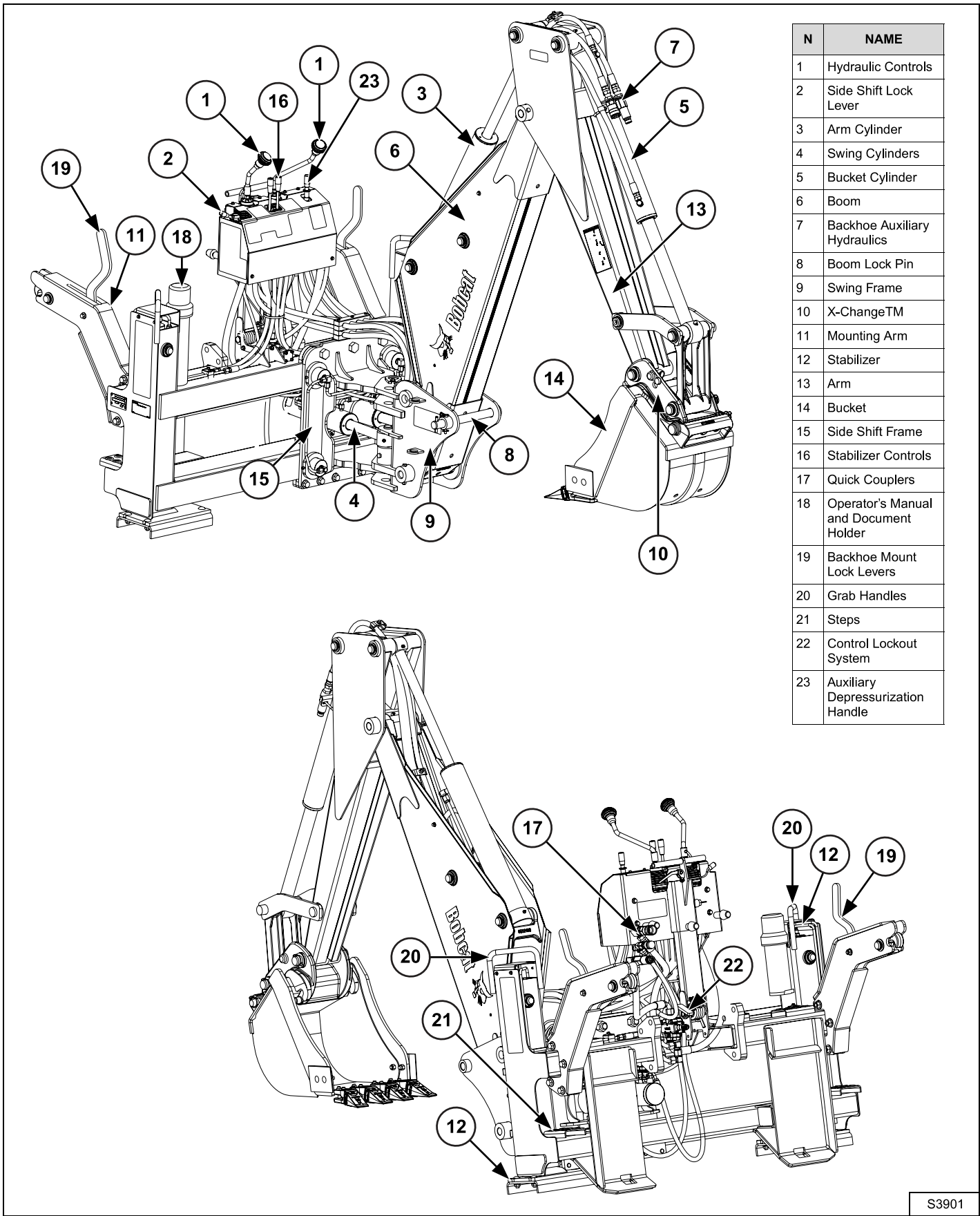
Figure 3



Serial Number location on backhoe is unknown at this moment.

IDENTIFICATION

Figure 4



Dealer Copy -- Not for Resale

S3901



Bobcat®

Dealer Conv -- Not for Resale

SAFETY

BEFORE OPERATION	IX
FIRE PREVENTION	XI
SAFE OPERATION NEEDS A QUALIFIED OPERATOR.....	XII
SAFETY INSTRUCTIONS.....	X
USE SAFETY RULES.....	XIII



Bobcat®

BEFORE OPERATION

Carefully follow the operating and maintenance instructions in this manual.

The Bobcat Loader is highly maneuverable and compact. It is rugged and useful under a wide variety of conditions. This presents an operator with hazards associated with off highway, rough terrain applications, common with Bobcat Loader usage.

The Bobcat Loader has an internal combustion engine with resultant heat and exhaust. All exhaust gasses can kill or cause illness so use the Loader with adequate ventilation.

The dealer explains the capabilities and restrictions of the Bobcat Loader and attachment for each application. The dealer demonstrates the safe operation according to Bobcat instructional materials, which are also available to operators. The dealer can also identify unsafe modifications or use of unapproved attachments. The attachments and buckets are designed for a Rated Load Capacity. They are designed for secure fastening to the Bobcat Loader. The user must check with the dealer, or Bobcat literature, to determine safe loads of materials of specified densities for the machine - attachment combination.

The following publications and training materials provide information on the safe use and maintenance of the Bobcat machine and attachments:

The Delivery Report is used to assure that complete instructions have been given to the new owner and that the machine and attachment is in safe operating condition.

The Operation & Maintenance Manual delivered with the machine or attachment gives operating information as well as routine maintenance and service procedures. It is a part of the machine and can be stored in a container provided on the machine. Replacement Operation & Maintenance Manuals can be ordered from your Bobcat dealer.

Machine signs (decals) instruct on the safe operation and care of your Bobcat machine or attachment. The signs and their locations are shown in the Operation & Maintenance Manual. Replacement signs are available from your Bobcat dealer.

Load Capacity Charts for each attachment are provided in the operator area. These charts indicate the Rated Load Capacity for each attachment at specified boom heights and extensions. Replacement or additional

charts for new attachments are available from your Bobcat dealer.

An Operator's Handbook is fastened to the operator cab of the loader. It's brief instructions are convenient to the operator. The Handbook is available from your dealer in an English edition or one of many other languages. See your Bobcat dealer for more information on translated versions.

The AEM Safety Manual delivered with the machine gives general safety information.

The "Safety Training for Operators of the Bobcat Loader" course is available through your Bobcat dealer. This course is intended to provide rules and practices of correct operation of the Bobcat Loader. The course is available in English and Spanish versions.

See the PUBLICATIONS AND TRAINING RESOURCES Page in this manual or your Bobcat dealer for Service and Parts Manuals, printed materials, videos, or training courses available. Also check the Bobcat web sites **www.training.bobcat.com** or **www.bobcat.com**

The dealer and owner/operator review the recommended uses of the product when delivered. If the owner/operator will be using the machine for a different application(s) he or she must ask the dealer for recommendations on the new use.

SAFETY INSTRUCTIONS

WARNING

Warnings on the machine and in this manual are for your safety. Failure to obey can cause injury or death.

WARNING

Operator must have instructions before running the machine. Untrained operators can cause injury or death.

IMPORTANT

This notice identifies procedures which must be followed to avoid damage to the machine.

The Bobcat machine and equipment must be in good operating condition before use.

Check all of the items on the Bobcat Service Schedule Decal under the 8-10 hour column or as shown in the Operation & Maintenance Manual.

FIRE PREVENTION

The Bobcat machine and equipment must be in good operating condition before use.

Check all of the items on the Bobcat Service Schedule Decal under the 8-10 hour column or as shown in the Operation & Maintenance Manual.

The machines and some attachments have components that are at high temperatures under normal operating conditions. The primary source of high temperatures is the engine and exhaust system. The electrical system, if damaged or incorrectly maintained, can be a source of arcs or sparks.

Flammable debris (leaves, straw, etc.) must be removed regularly. If flammable debris is allowed to accumulate, it can cause a fire hazard. Clean often to avoid this accumulation. Flammable debris in the engine compartment is a fire hazard.

The spark arrestor exhaust system (if equipped) is designed to control the emission of hot particles from the engine and exhaust system, but the muffler and the engine are still hot.

Do not use the machine where exhaust, arcs, sparks or hot components can contact flammable material, explosive dust or gases.

The operator cab (if equipped), engine compartment and engine cooling system must be inspected every day and cleaned if necessary to prevent fire hazard and overheating.

Check all electrical wiring and connections for damage. Keep battery terminals clean and tight. Repair or replace any damaged parts.

Check fuel and hydraulic tubes, hoses and fittings for damage and leakage. Never use open flame or bare skin to check for leaks. Tighten or replace any parts that show leakage. Always clean fluid spills. Do not use gasoline or diesel fuel for cleaning parts. Use commercial nonflammable solvents.

Do not use ether or starting fluids on any engine that has glow plugs. These starting aids can cause explosion and injure bystanders.

Always clean the machine, disconnect the battery and disconnect the wiring from the controllers (if equipped) before welding. Cover rubber hoses, battery and all flammable parts. Keep a fire extinguisher near the machine when welding. Have good ventilation when grinding or welding painted parts. Wear dust masks when

grinding painted parts. Toxic dust or gas can be produced.

Stop the engine and let it cool before adding fuel. No smoking!

Use the procedure in the Operation & Maintenance Manual for connecting the battery and for jump starting.

Use the procedure in the Operation & Maintenance Manual for cleaning the spark arrestor muffler(if equipped).

Know where the fire extinguishers and first aid kits are located and how to use them. Fire extinguishers are available from your Bobcat dealer.

SAFE OPERATION NEEDS A QUALIFIED OPERATOR

For an operator to be qualified, he or she must not use drugs or alcoholic drinks which impair alertness or coordination while working. An operator who is taking prescription drugs must get medical advice to determine if he or she can safely operate a machine.

Wear tight fitting clothing. Always wear safety glasses when doing maintenance or service. Safety glasses, hearing protection or Front Window Guard are required for some work. See your Bobcat dealer about Bobcat Safety Equipment.

Understand the Written Instructions, Rules and Regulations

- The written instructions from Bobcat Company include the Delivery Report, Operation & Maintenance Manual, Operator's Handbook, Safety Manual and machine signs (decals).
- Check the rules and regulations at your location. The rules may include an employer's work safety requirements. Regulations may apply to local driving requirements or use of a Slow Moving Vehicle (SMV) emblem. Regulations may identify a hazard such as a utility line.

Have Training with Actual Operation

- National Regulations require employers to train employees operating Rough Terrain Forklifts.
- Operator training must consist of a demonstration and verbal instruction. This training is given by your Bobcat dealer before the product is delivered.
- The new operator must start in an area without bystanders or structures and use all the controls until he or she can operate the machine and attachment safely under all conditions of the work area. Always fasten seat belt before operating.
- Operator Training Courses are available from your Bobcat dealer in English and Spanish. They provide information for safe and efficient equipment operation. Safety videos are also available.

Know the Work Conditions

- Know the weight of the materials being handled. Avoid exceeding the Rated Load Capacity of the machine (as indicated on the Load Capacity Charts). Material which is very dense will be heavier than the same volume of less dense material. Reduce the size of load if handling dense material.
- The operator must know any prohibited uses or work areas, for example, he or she needs to know about excessive slopes.
- Know the location of any underground lines. Call local utilities or the TOLL FREE phone number found in the **Before Operation** Section of this manual.

USE SAFETY RULES

Read and follow the instructions in the machine and the attachment's Operation & Maintenance Manual before operating.

Check for underground lines before operating attachment (if applicable).

In addition to the design and configuration of equipment, hazard control and accident prevention are dependent upon the awareness, concern, prudence and proper training of personnel involved in the operation, transport, maintenance and storage of equipment.

Check that the Bob-tach levers are in the locked position and the wedges are fully engaged into the holes of the attachment.

Check that the attachment is securely fastened to the machine.

Make sure all the machine controls are in the NEUTRAL position before starting the machine.

Operate the attachment only from the operator's position.

When learning to operate the attachment, do it at slow rate in an area clear of bystanders.

DO NOT permit personnel in the work area when operating the machine and attachment.

The attachments must be used ONLY on approved machines. See your Bobcat dealer for an updated list of approved attachments for each machine model.

DO NOT modify equipment or add attachments that are not approved by the manufacturer.

DO NOT make any adjustments or repairs on the machine or attachment while the engine is running.



Bobcat®

Dealer Conv -- Not for Resale

SAFETY AND MAINTENANCE

HYDRAULIC SYSTEM 10-30-1

 Hydraulic Fluid Replacement 10-30-1

 Hydraulic Pressure Release Procedure..... 10-30-1

LIFTING..... 10-10-1

LUBRICATION 10-40-1

SERVICE SCHEDULE 10-50-1

TRANSPORTING 10-20-1

Dealer Copy -- Not for Resale



Bobcat®

Dealer Copy -- Not for Resale