

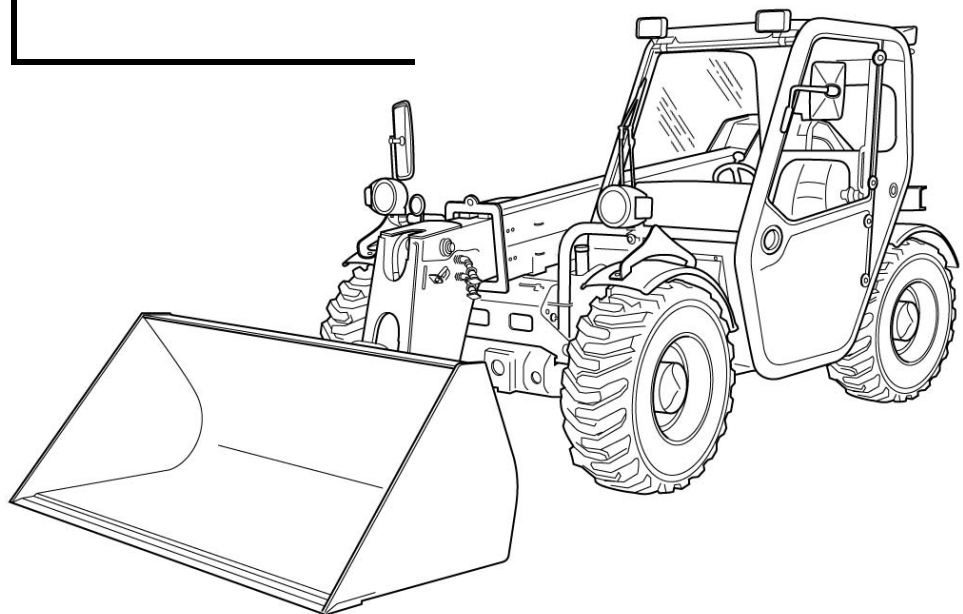
T2250

**S/N A859 11001 &
Above**



Bobcat®

**SERVICE
MANUAL**





MAINTENANCE SAFETY

WARNING

Instructions are necessary before operating or servicing machine. Read and understand the Operation & Maintenance Manual, Operator's Handbook and signs (decals) on machine. Follow warnings and instructions in the manuals when making repairs, adjustments or servicing. Check for correct function after adjustments, repairs or service. Untrained operators and failure to follow instructions can cause injury or death.

W-2003-0903

CORRECT

B-10731a

⚠ Never service the Bobcat Telescopic Handler without instructions.



Safety Alert Symbol: This symbol with a warning statement, means: "Warning, be alert! Your safety is involved!" Carefully read the message that follows.

CORRECT

B-16082

⚠ Cleaning and maintenance are required daily.

WRONG

B-16080

⚠ Disconnecting or loosening any hydraulic tubeline, hose, fitting, component or a part failure can cause boom to drop. Do not go under boom when raised unless supported by an approved boom stop. Replace if damaged.

WRONG

B-16079

⚠ Never work on Telescopic Handler with boom up unless boom is held by an approved boom stop. Replace if damaged.
⚠ Never modify equipment or add attachments not approved by Bobcat Company.

WRONG

B-16081

⚠ Have good ventilation when welding or grinding painted parts.
⚠ Wear dust mask when grinding painted parts. Toxic dust and gas can be produced.
⚠ Avoid exhaust fume leaks which can kill without warning. Exhaust system must be tightly sealed.

WRONG

B-16078

⚠ Keep body, jewelry and clothing away from moving parts, electrical contact, hot parts and exhaust.
⚠ Wear eye protection to guard from battery acid, compressed springs, fluids under pressure and flying debris when engines are running or tools are used. Use eye protection approved for type of welding.

WRONG

B-6589

⚠ Lead-acid batteries produce flammable and explosive gases.
⚠ Keep arcs, sparks, flames and lighted tobacco away from batteries.
⚠ Batteries contain acid which burns eyes or skin on contact. Wear protective clothing. If acid contacts body, flush well with water. For eye contact flush well and get immediate medical attention.

Maintenance procedures which are given in the Operation & Maintenance Manual can be performed by the owner/operator without any specific technical training. Maintenance procedures which are **not** in the Operation & Maintenance Manual must be performed **ONLY BY QUALIFIED BOBCAT SERVICE PERSONNEL**. Always use **genuine Bobcat replacement parts**.



Bobcat®

ALPHABETICAL INDEX

ACCUMULATOR	20-210-01	GEAR PUMP	20-130-1
AIR CLEANER	70-40-01	GENERAL AIR CONDITIONING SERVICE GUIDELINES ..	80-60-1
AIR CLEANER SERVICE.....	10-60-01		
AIR CONDITIONING SERVICE	80-90-1		
AIR CONDITIONING SYSTEM FLOW.....	80-10-1	HEATER ASSEMBLY	80-170-1
ALTERNATOR	60-30-1	HYDRAULIC CONNECTION SPECIFICATIONS	SPEC-50-1
APPROVED BOOM STOP.....	10-150-1	HYDRAULIC CONTROL VALVE	20-170-1
AXLE AND DIFFERENTIAL (FRONT)	40-20-1	HYDRAULIC/HYDROSTATIC FLUID SPECIFICATIONS..	SPEC-60-1
AXLE AND DIFFERENTIAL (REAR).....	40-21-1	HYDRAULIC / HYDROSTATIC SYSTEM	10-100-1
AXLE TOE-IN	40-40-1	HYDRAULIC RESERVOIR.....	20-150-1
AXLES (FRONT AND REAR)	10-110-1	HYDRAULIC SYSTEM INFORMATION	20-10-1
		HYDROSTATIC DRIVE MOTOR	30-30-1
		HYDROSTATIC PUMP	30-40-1
		HYDROSTATIC SYSTEM INFORMATION	30-10-1
BASIC TROUBLESHOOTING	80-50-1	INCHING SWITCH.....	60-150-1
BATTERY	60-20-1	INNER BOOM	50-40-1
BOOM ASSEMBLY	50-30-1	INSTRUMENT PANEL	60-80-1
BRAKE VALVE	20-120-1		
BUCKET POSITIONING CYLINDER.....	20-30-1		
CAMSHAFT AND TIMING GEARS.....	70-100-1	JOYSTICK.....	20-180-1
COMPONENTS	80-20-1	JOYSTICK PANEL.....	50-120-1
COMPRESSOR	80-110-1		
CONDENSER	80-120-1		
CONVERSIONS.....	SPEC-70-1	LIFT CYLINDER.....	20-20-1
CRANKSHAFT AND PISTONS.....	70-90-1	LIFTING AND BLOCKING THE TELESCOPIC HANDLER .	10-10-1
CYLINDER HEAD	70-80-1	LIGHTS	60-60-1
		LUBRICATION.....	10-120-1
		LUBRICATION SYSTEM.....	70-60-1
DASH COVER/STEERING COLUMN COVER ..	50-130-1		
DRIVE BOX.....	20-70-1		
ELECTRICAL SYSTEM INFORMATION	60-10-1		
ENGINE AND ENGINE MOUNTS	70-11-1		
ENGINE AND HYDROSTAT ASSEMBLY	70-12-1		
ENGINE COOLING SYSTEM	10-70-1		
ENGINE COOLING SYSTEM	70-50-1		
ENGINE COVER.....	10-160-1		
ENGINE COVER.....	50-70-1		
ENGINE LUBRICATION SYSTEM.....	10-90-1		
ENGINE SPECIFICATIONS.....	SPEC-01		
ENGINE SPEED CONTROL.....	70-20-1		
EVAPORATOR/BLOWER UNIT	80-150-1		
EXPANSION VALVE	80-160-1		
EXTENSION CYLINDER	20-40-1		
FENDER	50-110-1		
FUEL SYSTEM	70-70-1		
FRONT AUXILIARY HYDRAULIC PRESSURE RELEASE VALVE	20-230-1		
FRONT AXLE.....	40-30-1		
FRONT WIPER MOTOR	60-110-1		
FUEL SYSTEM	10-80-1		
FUEL TANK.....	50-80-1		

ALPHABETICAL INDEX (CONT'D)

MACHINE TORQUE SPECIFICATIONS	SPEC-30-1	
MAIN RELIEF VALVE	20-80-1	
MANIFOLD	20-240-1	WEAR PADS (FRONT)..... 50-50-1
MUFFLER	70-30-1	WEAR PADS (REAR)..... 50-60-1
OIL COOLER	30-20-1	
OPERATOR CAB	10-20-1	
OPERATOR CAB	50-10-1	
OPERATOR SEAT	50-20-1	
PARKING BRAKE	20-190-1	
PARKING BRAKE	40-50-1	
PEDAL ASSEMBLY	60-140-1	
PORT RELIEF VALVES.....	20-100-1	
WORKGROUP LOCKOUT VALVE	20-200-1	
PRESSURE SWITCH	80-140-1	
BOB-TACH	50-90-1	
BOB-TACH CYLINDER	20-90-1	
REAR AXLE	40-90-1	
REAR WEIGHTS.....	50-100-1	
REAR WIPER MOTOR	60-130-1	
RECEIVER / DRIER.....	80-130-1	
REGULAR MAINTENANCE.....	80-40-1	
REMOTE START	10-180-1	
SAFETY	80-30-1	
SERVICE BRAKE	40-80-1	
SERVICE SCHEDULE	10-50-1	
SERVICE SOFTWARE	60-160-1	
STARTER	60-40-1	
STEERING ANGLE ADJUSTMENT	40-60-1	
STEERING CYLINDER (FRONT).....	20-60-1	
STEERING CYLINDER (REAR)	20-61-1	
STEERING MODE VALVE BLOCK	20-110-1	
STEERING VALVE	20-160-1	
SYSTEM CHARGING AND RECLAMATION	80-100-1	
SYSTEM TROUBLESHOOTING CHART	80-70-1	
TEMPERATURE AND PRESSURE	80-80-1	
TIRE MAINTENANCE	10-130-1	
TILT CYLINDER	20-50-1	
TOP WIPER MOTOR	60-120-1	
TORQUE SPECIFICATIONS FOR BOLTS.....	SPEC-40-1	
TOW VALVE	20-220-1	
TOWING THE TELESCOPIC HANDLER.....	10-40-1	
TRANSPORTING THE TELESCOPIC HANDLER.....	10-30-1	
TRAVEL LEVER.....	60-70-1	
TROUBLESHOOTING	40-10-1	
TELESCOPIC HANDLER TELESCOPIC TOOL CARRIER (TTC) SPECIFICATIONS	SPEC-10-1	

CONTENTS

DELIVERY REPORT	IX
FOREWORD	III
SAFETY INSTRUCTIONS	V
SERIAL NUMBER LOCATION	VIII
BOBCAT TELESCOPIC HANDLER IDENTIFICATION	X
SAFETY AND MAINTENANCE	10-01
HYDRAULIC SYSTEM	20-01
HYDROSTATIC SYSTEM	30-01
DRIVE SYSTEM	40-01
MAIN FRAME	50-01
ELECTRICAL SYSTEM AND ANALYSIS	60-01
ENGINE SERVICE	70-01
HEATING, VENTILATION, AIR CONDITIONING	80-01
SPECIFICATIONS	SPEC-01

**SAFETY &
MAINTENANCE**

**HYDRAULIC
SYSTEM**

**HYDROSTATIC
SYSTEM**

**DRIVE
SYSTEM**

MAIN FRAME

**ELECTRICAL
SYSTEM &
ANALYSIS**

**ENGINE
SERVICE**

HVAC

SPECIFICATION



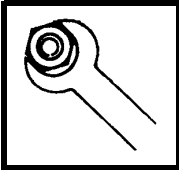
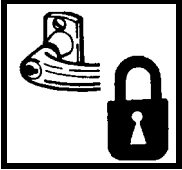
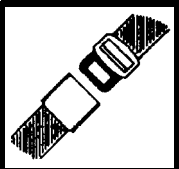
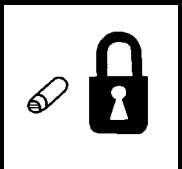

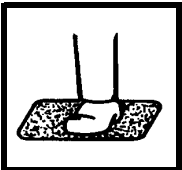

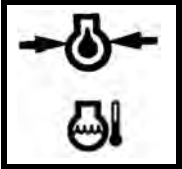
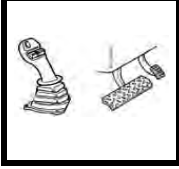


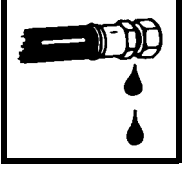


Bobcat®

FOREWORD

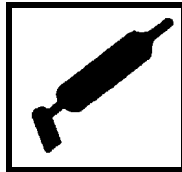
This manual is for the Bobcat Telescopic Handler mechanic. It provides necessary servicing and adjustment procedures for the Bobcat Telescopic Handler and its component parts and systems. Refer to the Operation & Maintenance Manual for operating instructions, starting procedure, daily checks, etc.

A general inspection of the following items must be made after the Telescopic Handler has had service or repair:

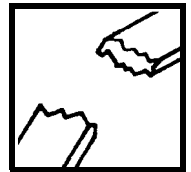
- | | | | |
|--|---|---|---|
| <p>1. Check that ROPS/FOPS (including right side window) is in good condition and is not modified.</p> |  | <p>8. The parking brake must function correctly.</p> |  |
| <p>2. Check that ROPS mounting hardware is tightened and is Bobcat approved.</p> |  | <p>9. Enclosure door latches must open and close freely.</p> |  |
| <p>3. The seat belt must be correctly installed, functional and in good condition.</p> |  | <p>10. Attachment locking pins must function correctly and be in good condition. Bob-Tach wedges and linkages (if equipped) must function correctly and be in good condition.</p> |  |
| <p>4. Check boom stop, replace if damaged.</p> |  | <p>11. Safety treads must be in good condition.</p> |  |
| <p>5. Machine signs (decals) must be legible and in the correct location.</p> |  | <p>12. Check for correct function of indicator lamps and gauges.</p> |  |
| <p>6. Joystick control lever and foot pedals must return to neutral.</p> |  | <p>13. Check hydraulic fluid level, engine oil level and fuel supply.</p> |  |
| <p>7. Check for correct function of the work lights.</p> |  | <p>14. Inspect for fuel, oil or hydraulic fluid leaks.</p> |  |

FW VH-0308 SM

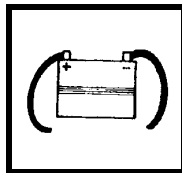
15. Lubricate the Telescopic Handler.



20. Inspect for loose or broken parts or connections.



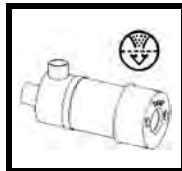
16. Check the condition of the battery and cables.



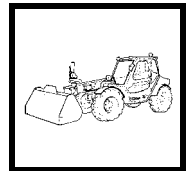
21. Check for any field modification not completed.



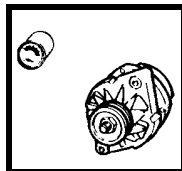
17. Inspect the air cleaner for damage or leaks. Check the condition of the element.



22. Operate the machine and check all functions.



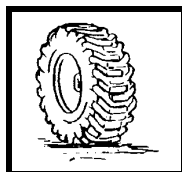
18. Check the electrical charging system.



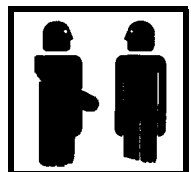
23. Check function or condition of all equipped options and accessories (examples: back-up alarm, fire extinguisher, rotating beacon, front stabilizers, etc.).



19. Check tires for wear and pressure. Use only approved tires.



24. Recommend to the owner that all necessary corrections be made before the machine is returned to service.



**CALIFORNIA
PROPOSITION 65 WARNING**
Diesel engine exhaust and some of its constituents are known to the state of California to cause cancer, birth defects and other reproductive harm.

FW VH-0308 SM

SAFETY INSTRUCTIONS

 Safety Alert Symbol
This symbol with a warning statement means: “Warning, be alert! Your safety is involved!” Carefully read the message that follows.



Instructions are necessary before operating or servicing machine. Read and understand the Operation & Maintenance Manual, Operator's Handbook and signs (decals) on machine. Follow warnings and instructions in the manuals when making repairs, adjustments or servicing. Check for correct function after adjustments, repairs or service. Untrained operators and failure to follow instructions can cause injury or death.

W-2003-0903



This notice identifies procedures which must be followed to avoid damage to the machine.

I-2019-0284



The signal word DANGER on the machine and in the manuals indicates a hazardous situation which, if not avoided, will result in death or serious injury.

D-1002-1107



The signal word WARNING on the machine and in the manuals indicates a potentially hazardous situation which, if not avoided, could result in death or serious injury.

W-2044-1107

The following publications provide information on the safe use and maintenance of the Bobcat machine and attachments:

- The Delivery Report is used to assure that complete instructions have been given to the new owner and that the machine is in safe operating condition.

- The Operation & Maintenance Manual delivered with the machine or attachment contains operating information as well as routine maintenance and service procedures. It is a part of the machine and can be stored in a container provided on the machine. Replacement Operation & Maintenance Manuals can be ordered from your Bobcat dealer.
- Machine signs (decals) instruct on the safe operation and care of your Bobcat machine or attachment. The signs and their locations are shown in the Operation & Maintenance Manual. Replacement signs are available from your Bobcat dealer.
- The Service Manual and Parts Manual are available from your dealer for use by mechanics to do shop-type service and repair work.

The dealer and owner / operator review the recommended uses of the product when delivered. If the owner / operator will be using the machine for a different application(s) he or she must ask the dealer for recommendations on the new use.



Cutting or drilling concrete containing sand or rock containing quartz may result in exposure to silica dust.

SI VH-0308 SM

FIRE PREVENTION



Maintenance

The machine and some attachments have components that are at high temperatures under normal operating conditions. The primary source of high temperatures is the engine and exhaust system. The electrical system, if damaged or incorrectly maintained, can be a source of arcs or sparks.

Flammable debris (leaves, straw, etc.) must be removed regularly. If flammable debris is allowed to accumulate, it can cause a fire hazard. Clean often to avoid this accumulation. Flammable debris in the engine compartment is a potential fire hazard.

The operator's area, engine compartment and engine cooling system must be inspected every day and cleaned if necessary to prevent fire hazards and overheating.

All fuels, most lubricants and some coolants mixtures are flammable. Flammable fluids that are leaking or spilled onto hot surfaces or onto electrical components can cause a fire.

Operation

Do not use the machine where exhaust, arcs, sparks or hot components can contact flammable material, explosive dust or gases.

Electrical



Check all electrical wiring and connections for damage. Keep the battery terminals clean and tight. Repair or replace any damaged part or wires that are loose or frayed.

Battery gas can explode and cause serious injury. Use the procedure in the Operation & Maintenance Manual for connecting the battery and for jump starting. Do not jump start or charge a frozen or damaged battery. Keep any open flames or sparks away from batteries. Do not smoke in battery charging area.

Hydraulic System

Check hydraulic tubes, hoses and fittings for damage and leakage. Never use open flame or bare skin to check for leaks. Hydraulic tubes and hoses must be properly routed and have adequate support and secure clamps. Tighten or replace any parts that show leakage.

Always clean fluid spills. Do not use gasoline or diesel fuel for cleaning parts. Use commercial nonflammable solvents.

Fueling



Stop the engine and let it cool before adding fuel. No smoking! Do not refuel a machine near open flames or sparks. Fill the fuel tank outdoors.

Starting

Do not use ether or starting fluids on any engine that has glow plugs. These starting aids can cause explosion and injure you or bystanders.

Use the procedure in the Operation & Maintenance Manual for connecting the battery and for jump starting.

SI VH-0308 SM

FIRE PREVENTION (CONT'D)

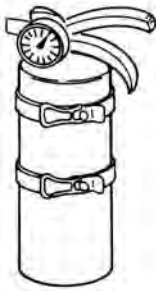
Welding And Grinding

Always clean the machine and attachment, disconnect the battery, and disconnect the wiring from the Bobcat controllers before welding. Cover rubber hoses, battery and all other flammable parts. Keep a fire extinguisher near the machine when welding.

Have good ventilation when grinding or welding painted parts. Wear dust mask when grinding painted parts. Toxic dust or gas can be produced.

Dust generated from repairing nonmetallic parts such as hoods, fenders or covers can be flammable or explosive. Repair such components in a well ventilated area away from open flames or sparks.

Fire Extinguishers



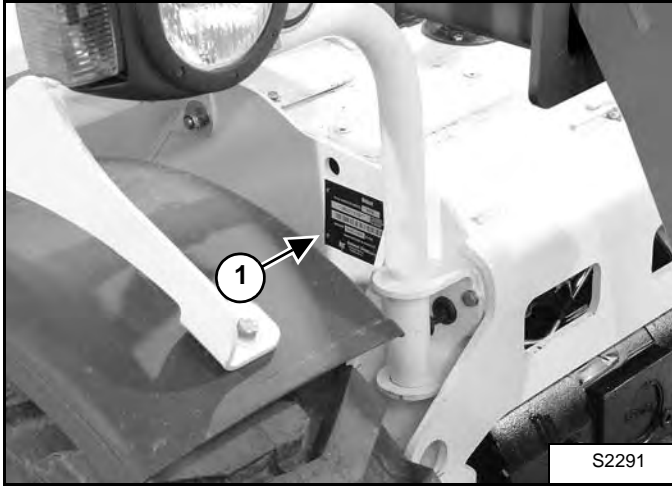
Know where fire extinguishers and first aid kits are located and how to use them. Inspect the fire extinguisher and service the fire extinguisher regularly. Obey the recommendations on the instructions plate.

SI VH-0208

SERIAL NUMBER LOCATION

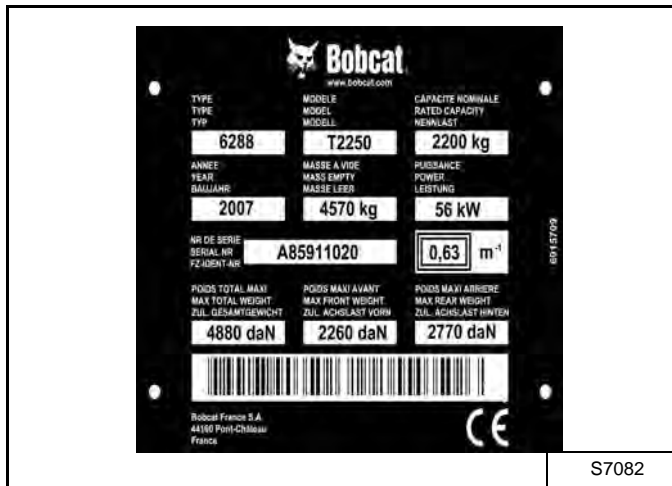
Always use the serial number of the Telescopic Handler when requesting service information or when ordering parts. Early or later models (identification made by serial number) may use different parts, or it may be necessary to use a different procedure in doing a specific service operation.

Figure 1



S2291

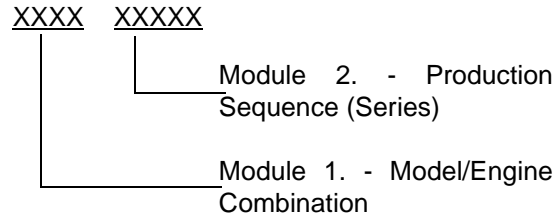
Figure 2



S7082

The Telescopic Handler serial number plate is located on the right front side of the chassis (Item 1) [Figure 1] & [Figure 2].

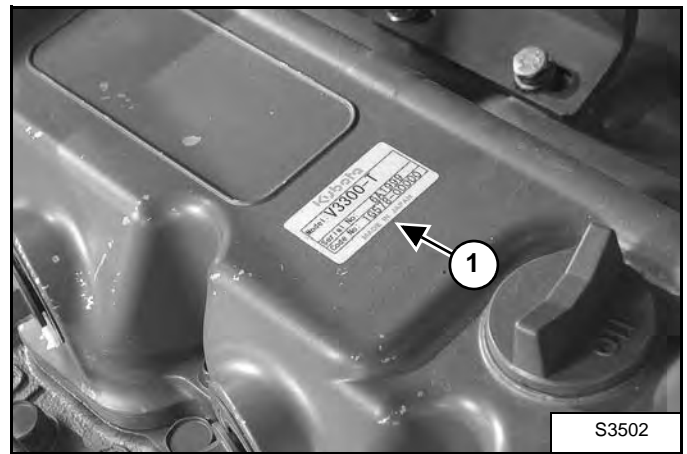
Explanation of Telescopic Handler Serial Number:



1. The four digit Model/Engine Combination Module number identifies the model number and engine combination.
2. The five digit Production Sequence Number identifies the order which the Telescopic Handler is produced.

Engine Serial Number

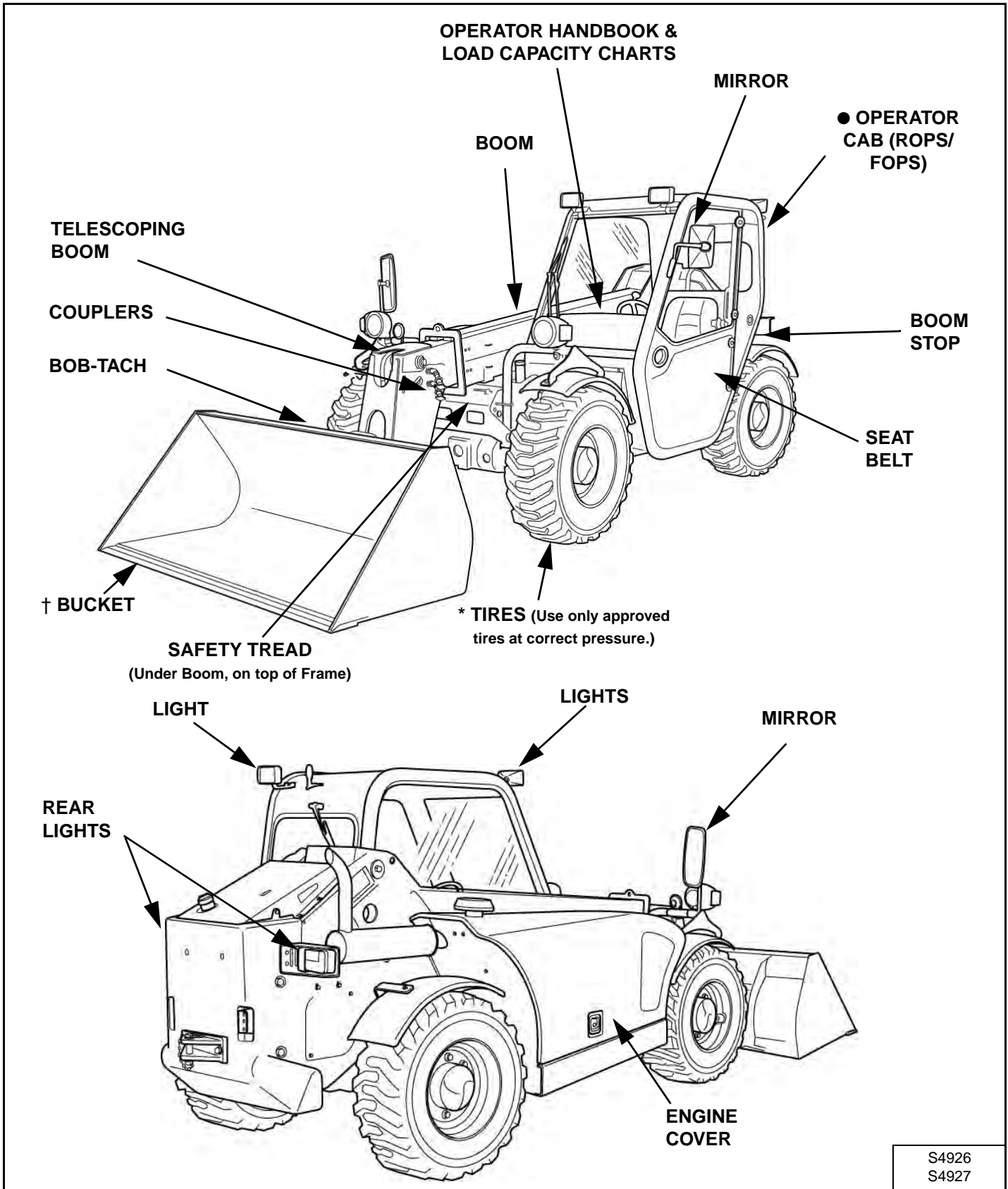
Figure 3



S3502

The engine serial number can be found on top of the cylinder block (Item 1) [Figure 3]. Always use the full number when ordering replacement parts.

BOBCAT TELESCOPIC HANDLER IDENTIFICATION



* TIRES - Tires shown may not be standard. The machine is factory equipped with standard tires. Other tires are available.

● ROPS, FOPS - Roll Over Protective Structure, per ISO 3471, and Falling Object Protective Structure, per ISO 3449, Level I. Level II is available.

† Bucket - Many Buckets and other Attachments are available.

AIR CLEANER SERVICE10-60-1
 Replacing The Filter Element10-60-1

APPROVED BOOM STOP10-150-1
 Installing The Approved Boom Stop10-150-1
 Removing The Approved Boom Stop10-150-1

AXLES (FRONT AND REAR)10-110-1
 Checking Oil Level (Front Differential)10-110-3
 Checking Oil Level (Planetary Carrier)10-110-1
 Checking Oil Level (Rear Differential)10-110-2
 Draining Oil (Front Differential)10-110-3
 Draining Oil (Planetary Carrier)10-110-1
 Draining Oil (Rear Differential)10-110-2

ENGINE COOLING SYSTEM10-70-1
 Checking The Coolant Level10-70-1
 Cleaning The Cooling System10-70-1
 Replacing The Coolant10-70-2

ENGINE COVER10-160-1
 Opening And Closing The Engine Cover10-160-1

ENGINE LUBRICATION SYSTEM10-90-1
 Checking Engine Oil10-90-1
 Oil Chart10-90-1
 Replacing Oil And Filter10-90-1

FUEL SYSTEM10-80-1
 Filling The Fuel Tank10-80-1
 Fuel Filter10-80-2
 Fuel Specifications10-80-1

HYDRAULIC / HYDROSTATIC SYSTEM10-100-1
 Checking And Adding Fluid10-100-1
 Replacing Hydraulic Fluid10-100-2
 Replacing The Hydraulic / Hydrostatic Filters10-100-1

LIFTING AND BLOCKING THE TELESCOPIC HANDLER . .10-10-1
 Procedure10-10-1

LUBRICATION10-120-1
 Procedure10-120-1

Continued On Next Page

SAFETY AND MAINTENANCE (CONT'D)

OPERATOR CAB	10-20-1
Cab Door	10-20-2
Cab Door Window	10-20-2
Emergency Exit	10-20-1
REMOTE START	10-180-1
Connecting to the Telescopic Handler	10-180-1
SERVICE SCHEDULE	10-50-1
TIRE MAINTENANCE	10-130-1
Tire Mounting	10-130-1
Tire Pressure	10-130-1
Tire Rotation	10-130-1
Wheel Nuts	10-130-1
TOWING THE TELESCOPIC HANDLER	10-40-1
Engaging The Brake Discs	10-40-2
Releasing The Brake Discs	10-40-1
Towing	10-40-2
TRANSPORTING THE TELESCOPIC HANDLER	10-30-1
Procedure	10-30-1

Dear

**Thanks very much for your visiting and
patience.**

Want to get more information,

Please click here, Go back to the page.

**After your payment, you will have instant access to
your download.**

The Download Link will also be sent to your e-mail.

You will get the complete manual

Have any questions

please write to me

admin@servicemanualperfect.com