

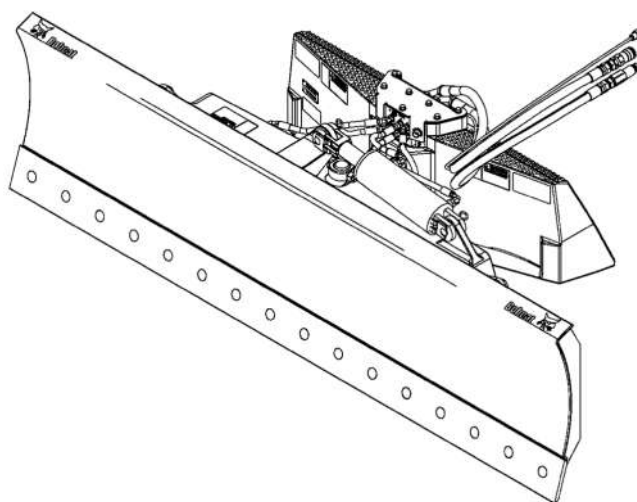
**Dozer
96 Inch**



Bobcat®

Service Manual

(96 Inch) S/N 224400101 & Above



ALPHABETICAL INDEX

ACD (ATTACHMENT CONTROL DEVICE)	30-10-1
ATTACHMENT DELIVERY REPORT	III
CUTTING EDGE	30-40-1
ELECTRICAL SCHEMATIC-7 PIN CONNECTOR	SPEC-20-1
ELECTRICAL SCHEMATIC-7 PIN CONNECTOR WITH 14 PIN ADAPTER HARNESS	SPEC-20-1
HYDRAULIC CONTROL VALVE	20-10-1
HYDRAULIC CYLINDER	20-20-1
HYDRAULIC SCHEMATIC	SPEC-30-1
INSPECTION	10-20-1
IDENTIFICATION	IV
MOLDBOARD	30-20-1
MOUNTING FRAME AND ROTATING SECTION	30-30-1
LUBRICATION	10-40-1
SERIAL NUMBER LOCATION	III
SPECIFICATIONS	SPEC-10-1
TROUBLESHOOTING	10-10-1



Bobcat®

CONTENTS

**SAFETY AND
MAINTENANCE**

**HYDRAULIC
SYSTEM**

**MAIN
FRAME**

**SPECIFICATIONS
AND
SCHEMATICS**

ATTACHMENT DELIVERY REPORT	III
IDENTIFICATION AND MACHINE SIGNS (DECALS)	IV
SERIAL NUMBER LOCATION	III
SAFETY AND MAINTENANCE.....	10-01
HYDRAULIC SYSTEM	20-01
MAIN FRAME	30-01
SPECIFICATIONS AND SCHEMATICS	SPEC-01

CALIFORNIA

PROPOSITION 65 WARNING

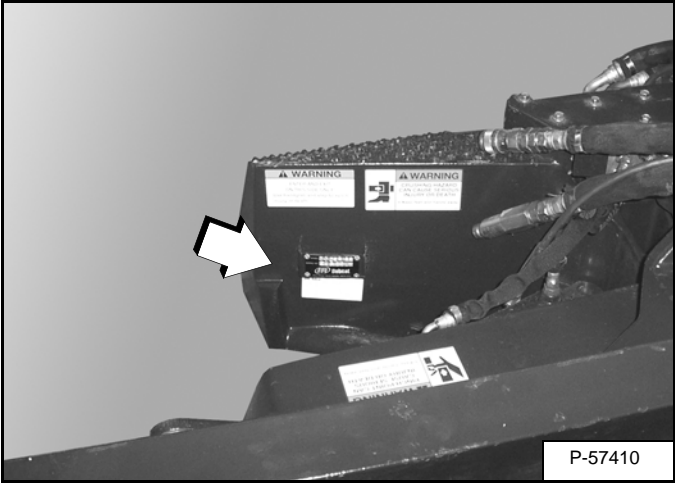
Diesel engine exhaust and some of its constituents are known to the State of California to cause cancer, birth defects and other reproductive harm.



Bobcat®

SERIAL NUMBER LOCATION

Figure 1



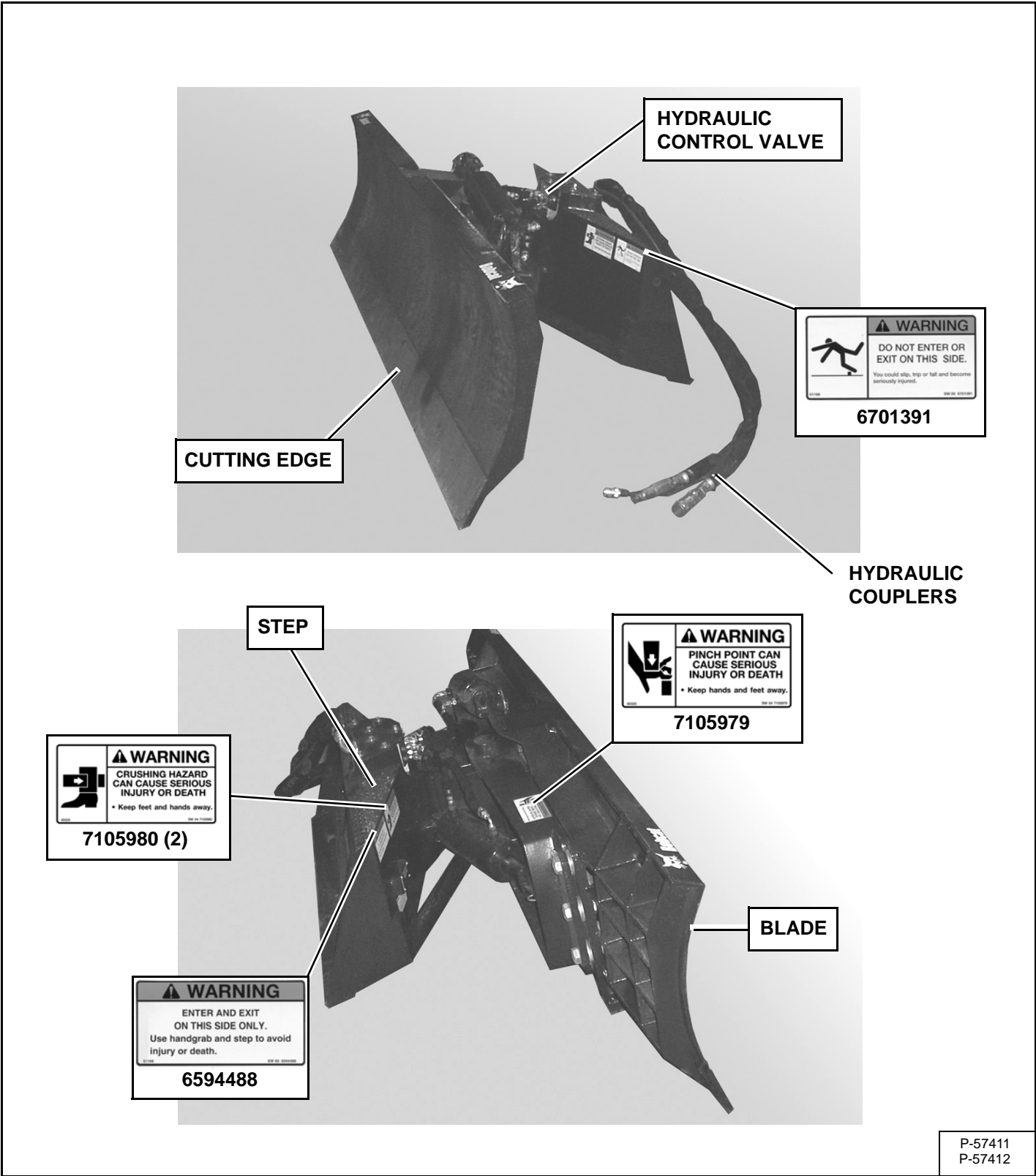
Always use the serial number of the Dozer when requesting service information or when ordering parts. Early or later models (identification made by serial number) may use different parts, or it may be necessary to use a different procedure in doing a specific service operation [Figure 1].

ATTACHMENT DELIVERY REPORT

Figure 2

The Attachment Delivery Report must be filled out by the dealer and signed by the owner or operator when the Dozer is delivered. An explanation of the form must be given to the owner. Make sure it is filled out completely [Figure 2].

IDENTIFICATION AND MACHINE SIGNS (DECALS)



TROUBLESHOOTING 10-10-1
INSPECTION 10-20-1
 Cutting Edge Inspection..... 10-20-3
 Dozer Mount Inspection..... 10-20-3
 Hand Lever Bob-Tach Inspection..... 10-30-1
 Power Bob-Tach Inspection..... 10-20-2



TROUBLESHOOTING

PROBLEM	CAUSE	CORRECTION
Dozer does not mount properly on the Bob-Tach.	Bob-Tach wedges are not fully retracted before installation.	Retract Bob-Tach wedges before installation.
	Mud, dirt or stones are lodged between the Bob-Tach and the Dozer mount.	Remove debris between Bob-Tach and Dozer mount.
Dozer does not rotate or oscillate.	No hydraulic flow.	Activate loader front auxiliary hydraulics.
		Check quick couplers connection. Check for damaged hose ends and fittings.
	Electrical harness not installed.	Install electrical harness from the Dozer to the loader.
	No electrical current flow through harness.	Check Dozer electrical harness for damage to connector or harness.



Bobcat®

INSPECTION

Hand Lever Bob-Tach Inspection

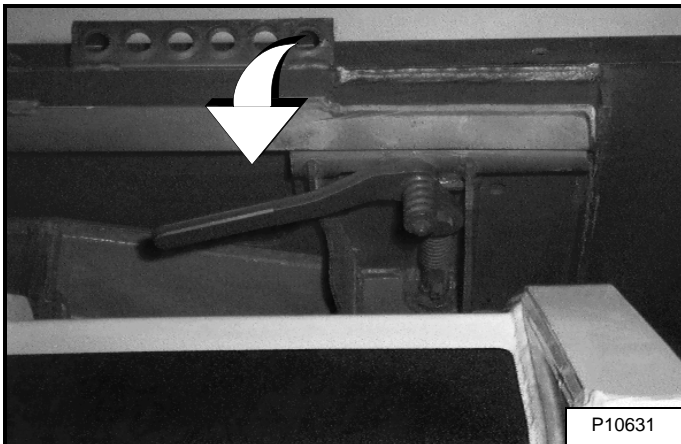


WARNING

Bob-Tach wedges must extend through the holes in attachment. Lever(s) must be fully down and locked. Failure to secure wedges can allow attachment to come off and cause injury or death.

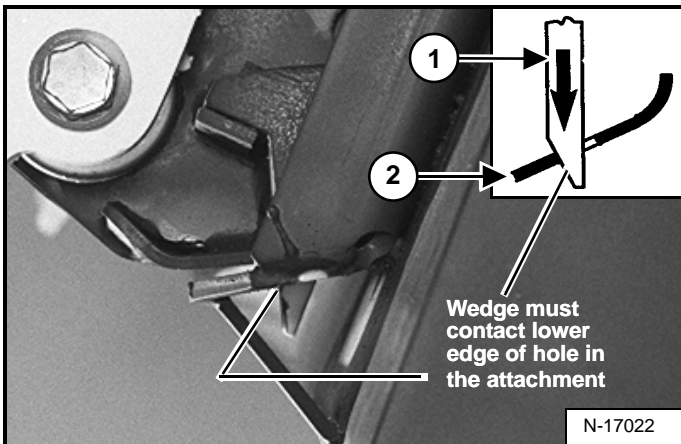
W-2102-0497

Figure 10-20-1



Move the Bob-Tach levers down to engage the wedges [Figure 10-20-1]. The levers and wedges must move freely.

Figure 10-20-2

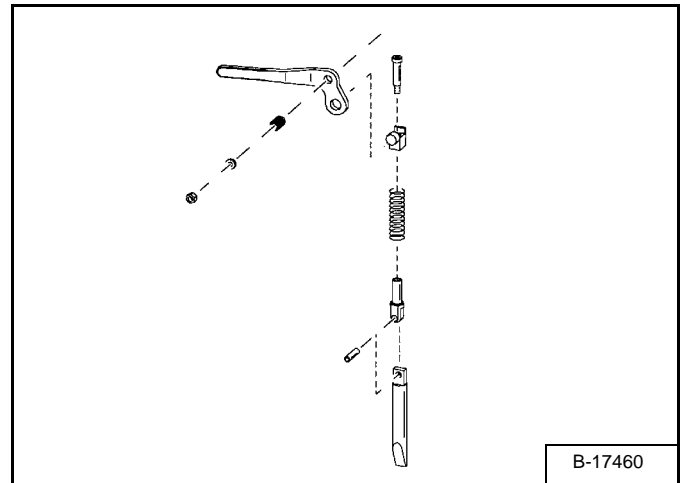


The wedges must extend through the holes in the attachment mounting frame (Item 2) [Figure 10-20-2].

The spring loaded wedge (Item 1) must contact the lower edge of the hole in the attachment (Item 2) [Figure 10-20-2].

If the wedge does not contact the lower edge of the hole the attachment will be loose and can come off the Bob-Tach.

Figure 10-20-3



Inspect the mounting frame on the attachment and the Bob-Tach, linkages and wedges for excessive wear or damage. Replace any parts that are damaged, bent, or missing [Figure 10-20-3]. Keep all fasteners tight.

Look for cracked welds. Contact your Bobcat dealer for repair or replacement parts.

Lubricate the wedges. (See the correct Loader Operation & Maintenance Manual for *LUBRICATION OF THE BOBCAT MACHINE*.)

INSPECTION (CONT'D)

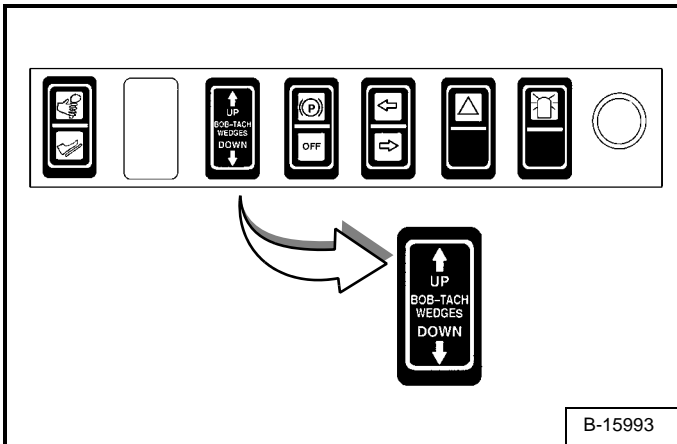
Power Bob-Tach Inspection

! WARNING

Bob-Tach wedges must extend through the holes in attachment. Lever(s) must be fully down and locked. Failure to secure wedges can allow attachment to come off and cause injury or death.

W-2102-0497

Figure 10-20-4

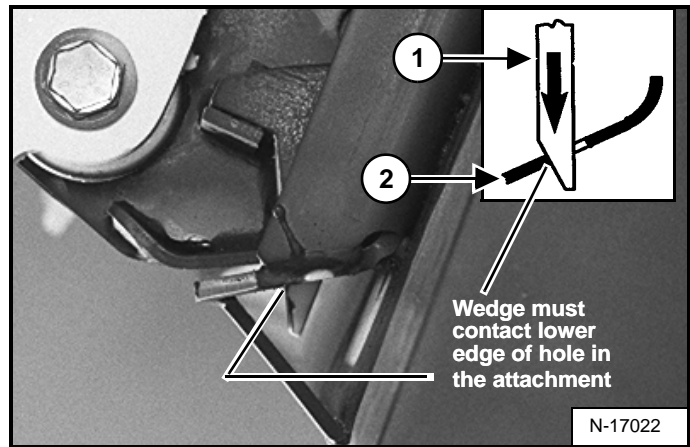


NOTE: The Power Bob-Tach system has continuous pressurized hydraulic oil to keep the wedges in the engaged position and prevent attachment disengagement. Because the wedges can slowly lower, the operator may need to reactivate the switch (BOB-TACH WEDGES UP) to be sure both wedges are fully raised before installing the attachment.

Push and hold the BOB-TACH WEDGES UP switch until wedges are fully raised. Push and hold the BOB-TACH WEDGES DOWN switch until [Figure 10-20-4] the wedges are fully down.

The wedges must move freely.

Figure 10-20-5

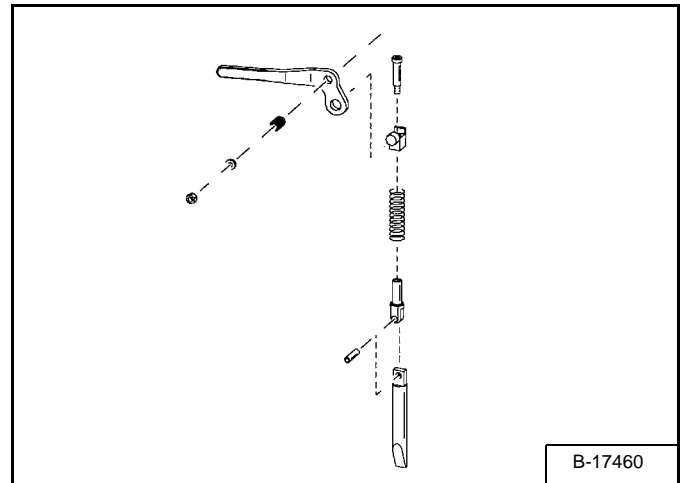


The wedges must extend through the holes in the attachment mounting frame (Item 2) [Figure 10-20-5].

The spring loaded wedge (Item 1) must contact the lower edge of the hole in the attachment (Item 2) [Figure 10-20-5].

If the wedge does not contact the lower edge of the hole [Figure 10-20-5] the attachment will be loose and can come off the Bob-Tach.

Figure 10-20-6



Inspect the mounting frame on the attachment and the Bob-Tach, linkages and wedges for excessive wear or damage [Figure 10-20-6].

Replace any parts that are damaged, bent, or missing. Keep all fasteners tight. Inspect the hoses and fittings for leaks.

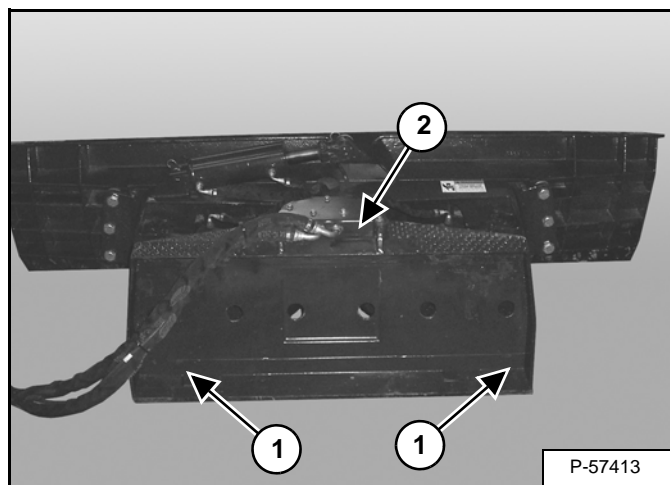
Look for cracked welds. Contact your Bobcat dealer for repair or replacement parts.

Lubricate the wedges. (See the correct loader Operation & Maintenance Manual for *LUBRICATION OF THE BOBCAT LOADER*.)

INSPECTION (CONT'D)

Dozer Mount Inspection

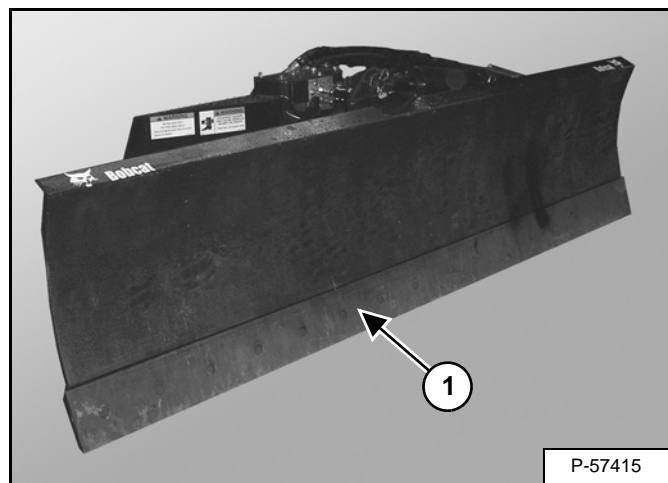
Figure 10-20-7



Inspect the Bob-Tach wedge mounts (Item 1), mounting flange (Item 2) on the Dozer mount for wear and damage each time the Dozer is removed from the machine [Figure 10-20-7].

Cutting Edge Inspection

Figure 10-20-8



The one piece cutting edge (Item 1) [Figure 10-20-8] is reversible. When the cutting edge becomes worn or damaged, remove the cutting edge, rotate it 180 degrees and reinstall. (See Removal And Installation on Page 30-40-1.)

Replace the cutting edge as needed.



Bobcat®

HYDRAULIC SYSTEM

HYDRAULIC SYSTEM

HYDRAULIC CONTROL VALVE.....	20-10-1
Assembly.....	20-10-9
Disassembly.....	20-10-4
Parts Identification.....	20-10-3
Removal And Installation.....	20-10-1
 HYDRAULIC CYLINDER	 20-20-1
Assembly.....	20-20-7
Disassembly.....	20-20-4
Parts Identification.....	20-20-3
Oscillating Cylinder Removal And Installation.....	20-20-1
Angle Cylinder Removal And Installation.....	20-20-2



Bobcat®

Dear

**Thanks very much for your visiting and
patience.**

Want to get more information,

Please click here, Go back to the page.

**After your payment, you will have instant access to
your download.**

The Download Link will also be sent to your e-mail.

You will get the complete manual

Have any questions

please write to me

admin@servicemanualperfect.com