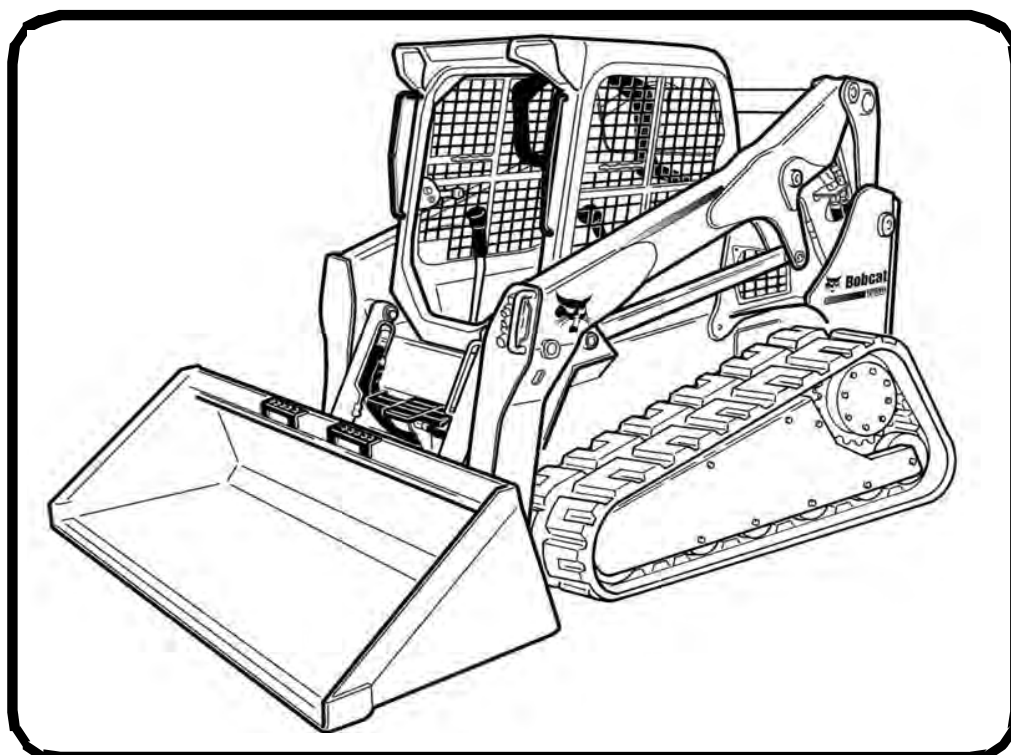




Service Manual

T650 Skid-Steer Loader

S/N ALJG11001 & Above
S/N T1ML11001 & Above
S/N B2KZ11001 & Above



EQUIPPED WITH
BOBCAT INTERLOCK
CONTROL SYSTEM (BICS™)



MAINTENANCE SAFETY



WARNING

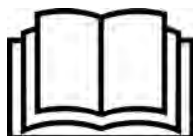
Instructions are necessary before operating or servicing machine. Read and understand the Operation & Maintenance Manual, Operator's Handbook and signs (decals) on machine. Follow warnings and instructions in the manuals when making repairs, adjustments or servicing. Check for correct function after adjustments, repairs or service. Untrained operators and failure to follow instructions can cause injury or death.

W-2003-0807



Safety Alert Symbol: This symbol with a warning statement, means: "Warning, be alert! Your safety is involved!" Carefully read the message that follows.

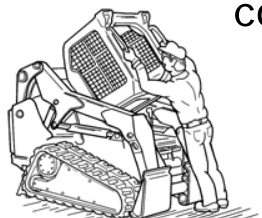
CORRECT



P-90216

Never service the Bobcat Skid-Steer Loader without instructions.

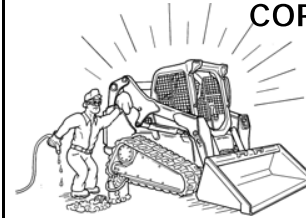
CORRECT



NA1711

Use the correct procedure to lift or lower operator cab.

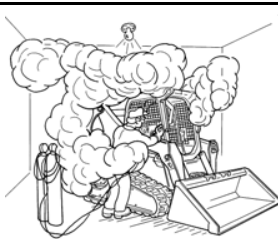
CORRECT



NA1715

Cleaning and maintenance are required daily.

WRONG



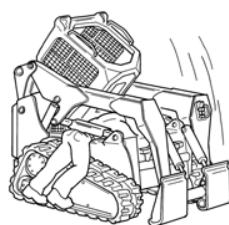
NA1714

Have good ventilation when welding or grinding painted parts.

Wear dust mask when grinding painted parts. Toxic dust and gas can be produced.

Avoid exhaust fume leaks which can kill without warning. Exhaust system must be tightly sealed.

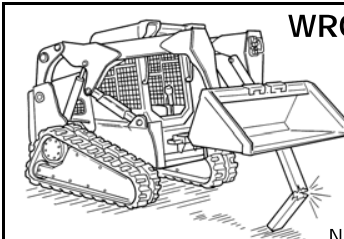
WRONG



NA1710

Disconnecting or loosening any hydraulic tubeline, hose, fitting, component or a part failure can cause lift arms to drop. Do not go under lift arms when raised unless supported by an approved lift arm support device. Replace if damaged.

WRONG



NA1712

Never work on loader with lift arms up unless lift arms are held by an approved lift arm support device. Replace if damaged.

Never modify equipment or add attachments not approved by Bobcat Company.

WRONG



NA1722

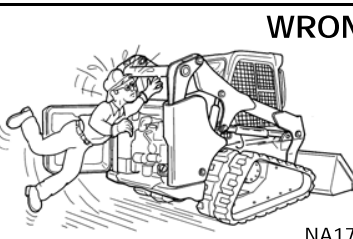
Stop, cool and clean engine of flammable materials before checking fluids.

Never service or adjust loader with the engine running unless instructed to do so in the manual.

Avoid contact with leaking hydraulic fluid or diesel fuel under pressure. It can penetrate the skin or eyes.

Never fill fuel tank with engine running, while smoking or when near open flame.

WRONG



NA1725

Keep body, jewelry and clothing away from moving parts, electrical contact, hot parts and exhaust.

Wear eye protection to guard from battery acid, compressed springs, fluids under pressure and flying debris when engines are running or tools are used. Use eye protection approved for type of welding.

Keep rear door closed except for service. Close and latch door before operating the loader.

WRONG



B-6589

Lead-acid batteries produce flammable and explosive gases.

Keep arcs, sparks, flames and lighted tobacco away from batteries.

Batteries contain acid which burns eyes or skin on contact.

Wear protective clothing. If acid contacts body, flush well with water. For eye contact flush well and get immediate medical attention.

Maintenance procedures which are given in the Operation & Maintenance Manual can be performed by the owner/operator without any specific technical training. Maintenance procedures which are **not** in the Operation & Maintenance Manual must be performed **ONLY BY QUALIFIED BOBCAT SERVICE PERSONNEL**. Always use genuine Bobcat replacement parts. The Service Safety Training Course is available from your Bobcat dealer.

MSW40-0609

**Thanks very much for your reading,
Want to get more information,
Please click here, Then get the complete
manual**

JustClickHere 

NOTE:

**If there is no response to click on the link above,
please download the PDF document first, and then
click on it.**

**Have any questions please write to me:
admin@servicemanualperfect.com**



CONTENTS

SAFETY & MAINTENANCE	10-01
HYDRAULIC SYSTEM	20-01
HYDROSTATIC SYSTEM	30-01
DRIVE SYSTEM	40-01
MAINFRAME	50-01
ELECTRICAL SYSTEM	60-01
ENGINE SERVICE	70-01
HEATING, VENTILATION AND AIR CONDITIONING (HVAC)	80-01
SPECIFICATIONS	SPEC-01
ALPHABETICAL INDEX	INDEX-01



FOREWORD

FOREWORD	1-7
SAFETY INSTRUCTIONS	1-9
FIRE PREVENTION	1-11
Maintenance	1-11
Operation	1-11
Electrical	1-11
Hydraulic System	1-11
Fueling	1-11
Starting	1-11
Spark Arrester Exhaust System	1-11
Welding And Grinding	1-12
Fire Extinguishers	1-12
SERIAL NUMBER LOCATIONS	1-13
Loader Serial Number	1-13
Engine Serial Number	1-13
DELIVERY REPORT	1-14
LOADER IDENTIFICATION	1-15

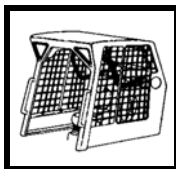


FOREWORD

This manual is for the Bobcat loader mechanic. It provides necessary servicing and adjustment procedures for the Bobcat loader and its component parts and systems. Refer to the Operation & Maintenance Manual for operating instructions, starting procedure, daily checks, etc.

A general inspection of the following items must be made after the loader has had service or repair:

1. Check that the ROPS/FOPS (Including side screens) is in good condition and is not modified.



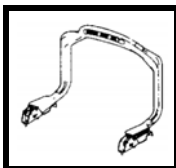
2. Check that ROPS mounting hardware is tightened and is Bobcat approved.



3. The seat belt must be correctly installed, functional and in good condition.



4. The seat bar must be correctly adjusted, clean and lubricated.



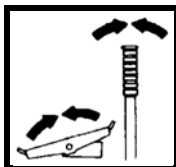
5. Check lift arm support device, replace if damaged.



6. Machine signs (decals) must be legible and in the correct location.



7. Steering levers, hand controls and foot pedals must return to neutral (as applicable).



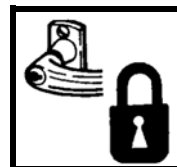
8. Check for correct function of the work lights.



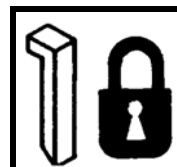
9. The parking brake must function correctly.



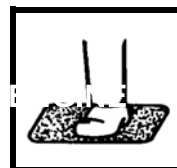
10. Enclosure door latches must open and close freely.



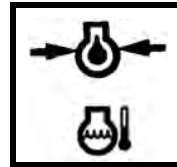
11. Bob-Tach® wedges and linkages must function correctly and be in good condition.



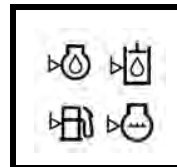
12. Safety treads must be in good condition.



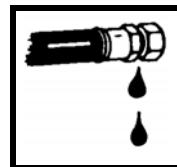
13. Check for correct function of indicator lamps.



14. Check all machine fluid levels.



15. Inspect for fuel, oil or hydraulic fluid leaks.

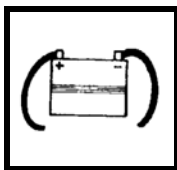


16. Lubricate the loader.



FW SSL-0617 SM

17. Check the condition of the battery and cables.



18. Inspect the air cleaner for damage or leaks. Check the condition of the element.



19. Check the electrical charging system.



20. Check tires for wear and pressure. Check tracks for wear and tension. Use only approved tires or tracks.



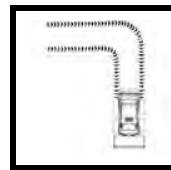
21. Inspect for loose or broken parts or connections.



22. Check for any field modification not completed.



23. Operate the machine and check all functions.



24. Check for correct function of the Bobcat Interlock Control System (BICS™) before the machine is returned to the customer.



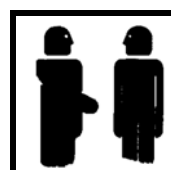
25. Check for proper function of front horn and back-up alarm (if equipped).



26. Check function or condition of all equipped options and accessories (examples: fire extinguisher, rotating beacon, lift kits, etc.).



27. Recommend to the owner that all necessary corrections be made before the machine is returned to service.



CALIFORNIA PROPOSITION 65 WARNING

Diesel engine exhaust and some of its constituents are known to the state of California to cause cancer, birth defects and other reproductive harm.

SAFETY INSTRUCTIONS



AVOID INJURY OR DEATH

Instructions are necessary before operating or servicing machine. Read and understand the Operation & Maintenance Manual, Operator's Handbook and signs (decals) on machine. Follow warnings and instructions in the manuals when making repairs, adjustments or servicing. Check for correct function after adjustments, repairs or service. Untrained operators and failure to follow instructions can cause injury or death.

W-2003-0807



This notice identifies procedures which must be followed to avoid damage to the machine.

I-2019-0284



The signal word DANGER on the machine and in the manuals indicates a hazardous situation which, if not avoided, will result in death or serious injury.

D-1002-1107



The signal word WARNING on the machine and in the manuals indicates a potentially hazardous situation which, if not avoided, could result in death or serious injury.

W-2044-1107

The following publications provide information on the safe use and maintenance of the Bobcat machine and attachments:

- The Delivery Report is used to assure that complete instructions have been given to the new owner and that the machine is in safe operating condition.
- The Operation & Maintenance Manual delivered with the machine or attachment contains operating information as well as routine maintenance and service procedures. It is a part of the machine and can be stored in a container provided on the machine. Replacement Operation & Maintenance Manuals can be ordered from your Bobcat dealer.
- Machine signs (decals) instruct on the safe operation and care of your Bobcat machine or attachment. The signs and their locations are shown in the Operation & Maintenance Manual. Replacement signs are available from your Bobcat dealer.
- An Operator's Handbook fastened to the operator cab. It's brief instructions are convenient to the operator. The handbook is available from your dealer in an English edition or one of many other languages. See your Bobcat dealer for more information on translated versions.
- The AEM Safety Manual delivered with the machine gives general safety information.
- The Service Manual and Parts Manual are available from your dealer for use by mechanics to do shop-type service and repair work.
- The Skid-Steer Loader Operator Training Course is available through your local dealer or at **Bobcat.com/training** or **Bobcat.com**. This course is intended to provide rules and practices of correct operation of the skid-steer loader. The course is available in English and Spanish versions.
- Service Safety Training Courses are available from your Bobcat dealer or at **Bobcat.com/training** or **Bobcat.com**. They provide information for safe and correct service procedures.
- The Skid-Steer Loader Safety Video is available from your Bobcat dealer or at **Bobcat.com/training** or **Bobcat.com**.

SI SSL-1016 SM

SAFETY INSTRUCTIONS (CONT'D)

The dealer and owner / operator review the recommended uses of the product when delivered. If the owner / operator will be using the machine for a different application(s) he or she must ask the dealer for recommendations on the new use.



Cutting or drilling concrete containing sand or rock containing quartz may result in exposure to silica dust. Do not exceed Permissible Exposure Limits (PEL) to silica dust as determined by OSHA or other job site Rules and Regulations. Use a respirator, water spray or other means to control dust. Silica dust can cause lung disease and is known to the state of California to cause cancer.

Call Before You Dig
Dial 811 (USA Only)
1-888-258-0808 (USA & Canada)

When you call, you will be directed to a location in your state / province, or city for information about buried lines (telephone, cable TV, water, sewer, gas, etc.).

FIRE PREVENTION



Maintenance

The machine and some attachments have components that are at high temperatures under normal operating conditions. The primary source of high temperatures is the engine and exhaust system. The electrical system, if damaged or incorrectly maintained, can be a source of arcs or sparks.

Flammable debris (leaves, straw, etc.) must be removed regularly. If flammable debris is allowed to accumulate, it can cause a fire hazard. Clean often to avoid this accumulation. Flammable debris in the engine compartment is a potential fire hazard.

The operator's area, engine compartment and engine cooling system must be inspected every day and cleaned if necessary to prevent fire hazards and overheating.

All fuels, most lubricants and some coolants mixtures are flammable. Flammable fluids that are leaking or spilled onto hot surfaces or onto electrical components can cause a fire.

Operation

Do not use the machine where exhaust, arcs, sparks or hot components can contact flammable material, explosive dust or gases.

Electrical



Check all electrical wiring and connections for damage. Keep the battery terminals clean and tight. Repair or replace any damaged part or wires that are loose or frayed.

Battery gas can explode and cause serious injury. Use the procedure in the Operation & Maintenance Manual for connecting the battery and for jump starting. Do not jump start or charge a frozen or damaged battery. Keep any open flames or sparks away from batteries. Do not smoke in battery charging area.

Hydraulic System

Check hydraulic tubes, hoses and fittings for damage and leakage. Never use open flame or bare skin to check for leaks. Hydraulic tubes and hoses must be properly routed and have adequate support and secure clamps. Tighten or replace any parts that show leakage.

Always clean fluid spills. Do not use gasoline or diesel fuel for cleaning parts. Use commercial nonflammable solvents.

Fueling



Stop the engine and let it cool before adding fuel. No smoking! Do not refuel a machine near open flames or sparks. Fill the fuel tank outdoors.

Ultra Low Sulfur Diesel (ULSD) poses a greater static ignition hazard than earlier diesel formulations with higher Sulfur content. Avoid death or serious injury from fire or explosion. Consult with your fuel or fuel system supplier to ensure the delivery system is in compliance with fueling standards for proper grounding and bonding practices.

Starting

Do not use ether or starting fluids on any engine that has glow plugs or air intake heater. These starting aids can cause explosion and injure you or bystanders.

Use the procedure in the Operation & Maintenance Manual for connecting the battery and for jump starting.

Spark Arrester Exhaust System

The spark arrester exhaust system is designed to control the emission of hot particles from the engine and exhaust system, but the muffler and the exhaust gases are still hot.

Check the spark arrester exhaust system regularly to make sure it is maintained and working properly. Use the procedure in the Operation & Maintenance Manual for cleaning the spark arrester muffler (if equipped).

FIRE PREVENTION (CONT'D)

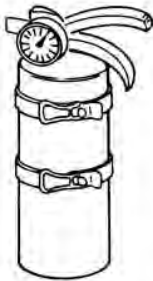
Welding And Grinding

Always clean the machine and attachment, disconnect the battery, and disconnect the wiring from the Bobcat controllers before welding. Cover rubber hoses, battery and all other flammable parts. Keep a fire extinguisher near the machine when welding.

Have good ventilation when grinding or welding painted parts. Wear dust mask when grinding painted parts. Toxic dust or gas can be produced.

Dust generated from repairing nonmetallic parts such as hoods, fenders or covers can be flammable or explosive. Repair such components in a well ventilated area away from open flames or sparks.

Fire Extinguishers



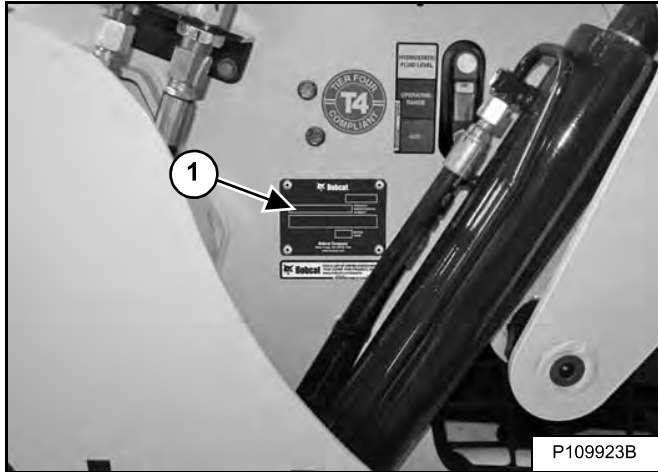
Know where fire extinguishers and first aid kits are located and how to use them. Inspect the fire extinguisher and service the fire extinguisher regularly. Obey the recommendations on the instructions plate.

SERIAL NUMBER LOCATIONS

Always use the serial number of the loader when requesting service information or when ordering parts. Early or later models (identification made by serial number) may use different parts, or it may be necessary to use a different procedure in doing a specific service operation.

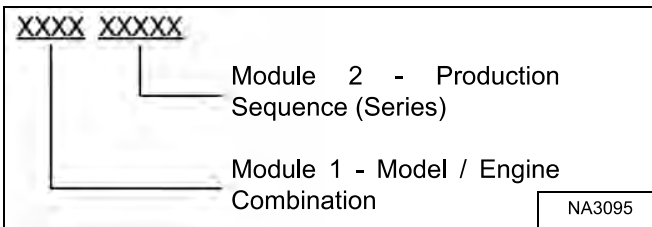
Loader Serial Number

Figure 1



The loader serial number plate (Item 1) [Figure 1] is located on the outside of the loader frame.

Figure 2

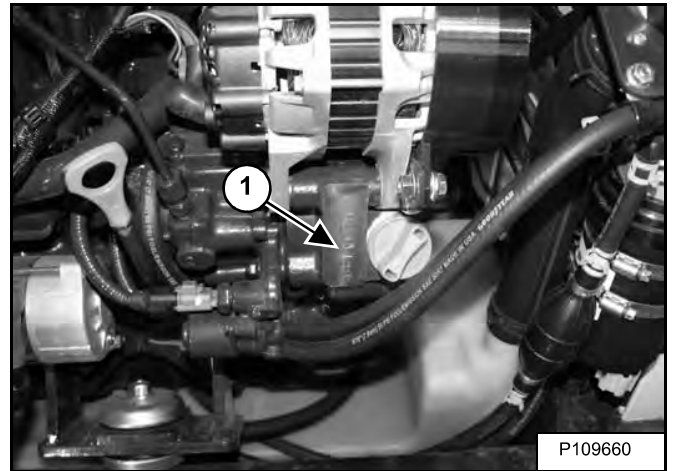


Explanation of loader Serial Number [Figure 2]:

1. The four digit Model / Engine Combination Module number identifies the model number and engine combination.
2. The five digit Production Sequence Number identifies the order which the loader is produced.

Engine Serial Number

Figure 3



The engine serial number (Item 1) [Figure 3] is located on the side of the engine next to the oil fill cap.

DELIVERY REPORT

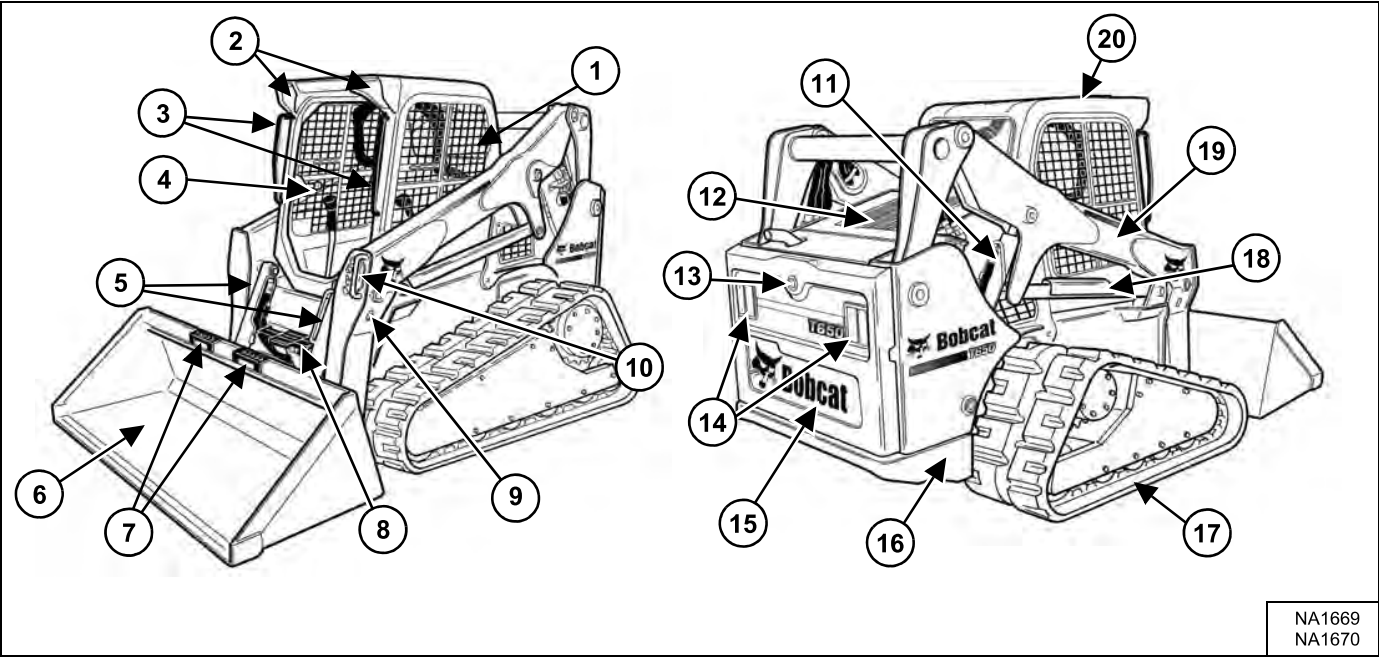
Figure 4

		Delivery Report Loader Dealer Name: _____	
PERFORMANCE CODE		SALES PREPARED NAME	
1. Machine Type: _____ 2. Machine Model: _____ 3. Machine Serial: _____ 4. Machine Year: _____ 5. Machine Color: _____ 6. Machine Weight: _____ 7. Machine Capacity: _____ 8. Machine Fuel: _____ 9. Machine Engine: _____ 10. Machine Transmission: _____ 11. Machine PTO: _____ 12. Machine Hydraulic: _____ 13. Machine Tire: _____ 14. Machine Wheel: _____ 15. Machine Axle: _____ 16. Machine Hitch: _____ 17. Machine Pallet Fork: _____ 18. Machine Backhoe: _____ 19. Machine Loader: _____ 20. Machine Bucket: _____ 21. Machine Blade: _____ 22. Machine Fork: _____ 23. Machine Pallet Fork: _____ 24. Machine Backhoe: _____ 25. Machine Loader: _____ 26. Machine Bucket: _____ 27. Machine Blade: _____ 28. Machine Fork: _____ 29. Machine Pallet Fork: _____ 30. Machine Backhoe: _____ 31. Machine Loader: _____ 32. Machine Bucket: _____ 33. Machine Blade: _____ 34. Machine Fork: _____ 35. Machine Pallet Fork: _____ 36. Machine Backhoe: _____ 37. Machine Loader: _____ 38. Machine Bucket: _____ 39. Machine Blade: _____ 40. Machine Fork: _____ 41. Machine Pallet Fork: _____ 42. Machine Backhoe: _____ 43. Machine Loader: _____ 44. Machine Bucket: _____ 45. Machine Blade: _____ 46. Machine Fork: _____ 47. Machine Pallet Fork: _____ 48. Machine Backhoe: _____ 49. Machine Loader: _____ 50. Machine Bucket: _____ 51. Machine Blade: _____ 52. Machine Fork: _____ 53. Machine Pallet Fork: _____ 54. Machine Backhoe: _____ 55. Machine Loader: _____ 56. Machine Bucket: _____ 57. Machine Blade: _____ 58. Machine Fork: _____ 59. Machine Pallet Fork: _____ 60. Machine Backhoe: _____ 61. Machine Loader: _____ 62. Machine Bucket: _____ 63. Machine Blade: _____ 64. Machine Fork: _____ 65. Machine Pallet Fork: _____ 66. Machine Backhoe: _____ 67. Machine Loader: _____ 68. Machine Bucket: _____ 69. Machine Blade: _____ 70. Machine Fork: _____ 71. Machine Pallet Fork: _____ 72. Machine Backhoe: _____ 73. Machine Loader: _____ 74. Machine Bucket: _____ 75. Machine Blade: _____ 76. Machine Fork: _____ 77. Machine Pallet Fork: _____ 78. Machine Backhoe: _____ 79. Machine Loader: _____ 80. Machine Bucket: _____ 81. Machine Blade: _____ 82. Machine Fork: _____ 83. Machine Pallet Fork: _____ 84. Machine Backhoe: _____ 85. Machine Loader: _____ 86. Machine Bucket: _____ 87. Machine Blade: _____ 88. Machine Fork: _____ 89. Machine Pallet Fork: _____ 90. Machine Backhoe: _____ 91. Machine Loader: _____ 92. Machine Bucket: _____ 93. Machine Blade: _____ 94. Machine Fork: _____ 95. Machine Pallet Fork: _____ 96. Machine Backhoe: _____ 97. Machine Loader: _____ 98. Machine Bucket: _____ 99. Machine Blade: _____ 100. Machine Fork: _____ 101. Machine Pallet Fork: _____ 102. Machine Backhoe: _____ 103. Machine Loader: _____ 104. Machine Bucket: _____ 105. Machine Blade: _____ 106. Machine Fork: _____ 107. Machine Pallet Fork: _____ 108. Machine Backhoe: _____ 109. Machine Loader: _____ 110. Machine Bucket: _____ 111. Machine Blade: _____ 112. Machine Fork: _____ 113. Machine Pallet Fork: _____ 114. Machine Backhoe: _____ 115. Machine Loader: _____ 116. Machine Bucket: _____ 117. Machine Blade: _____ 118. Machine Fork: _____ 119. Machine Pallet Fork: _____ 120. Machine Backhoe: _____ 121. Machine Loader: _____ 122. Machine Bucket: _____ 123. Machine Blade: _____ 124. Machine Fork: _____ 125. Machine Pallet Fork: _____ 126. Machine Backhoe: _____ 127. Machine Loader: _____ 128. Machine Bucket: _____ 129. Machine Blade: _____ 130. Machine Fork: _____ 131. Machine Pallet Fork: _____ 132. Machine Backhoe: _____ 133. Machine Loader: _____ 134. Machine Bucket: _____ 135. Machine Blade: _____ 136. Machine Fork: _____ 137. Machine Pallet Fork: _____ 138. Machine Backhoe: _____ 139. Machine Loader: _____ 140. Machine Bucket: _____ 141. Machine Blade: _____ 142. Machine Fork: _____ 143. Machine Pallet Fork: _____ 144. Machine Backhoe: _____ 145. Machine Loader: _____ 146. Machine Bucket: _____ 147. Machine Blade: _____ 148. Machine Fork: _____ 149. Machine Pallet Fork: _____ 150. Machine Backhoe: _____ 151. Machine Loader: _____ 152. Machine Bucket: _____ 153. Machine Blade: _____ 154. Machine Fork: _____ 155. Machine Pallet Fork: _____ 156. Machine Backhoe: _____ 157. Machine Loader: _____ 158. Machine Bucket: _____ 159. Machine Blade: _____ 160. Machine Fork: _____ 161. Machine Pallet Fork: _____ 162. Machine Backhoe: _____ 163. Machine Loader: _____ 164. Machine Bucket: _____ 165. Machine Blade: _____ 166. Machine Fork: _____ 167. Machine Pallet Fork: _____ 168. Machine Backhoe: _____ 169. Machine Loader: _____ 170. Machine Bucket: _____ 171. Machine Blade: _____ 172. Machine Fork: _____ 173. Machine Pallet Fork: _____ 174. Machine Backhoe: _____ 175. Machine Loader: _____ 176. Machine Bucket: _____ 177. Machine Blade: _____ 178. Machine Fork: _____ 179. Machine Pallet Fork: _____ 180. Machine Backhoe: _____ 181. Machine Loader: _____ 182. Machine Bucket: _____ 183. Machine Blade: _____ 184. Machine Fork: _____ 185. Machine Pallet Fork: _____ 186. Machine Backhoe: _____ 187. Machine Loader: _____ 188. Machine Bucket: _____ 189. Machine Blade: _____ 190. Machine Fork: _____ 191. Machine Pallet Fork: _____ 192. Machine Backhoe: _____ 193. Machine Loader: _____ 194. Machine Bucket: _____ 195. Machine Blade: _____ 196. Machine Fork: _____ 197. Machine Pallet Fork: _____ 198. Machine Backhoe: _____ 199. Machine Loader: _____ 200. Machine Bucket: _____ 201. Machine Blade: _____ 202. Machine Fork: _____ 203. Machine Pallet Fork: _____ 204. Machine Backhoe: _____ 205. Machine Loader: _____ 206. Machine Bucket: _____ 207. Machine Blade: _____ 208. Machine Fork: _____ 209. Machine Pallet Fork: _____ 210. Machine Backhoe: _____ 211. Machine Loader: _____ 212. Machine Bucket: _____ 213. Machine Blade: _____ 214. Machine Fork: _____ 215. Machine Pallet Fork: _____ 216. Machine Backhoe: _____ 217. Machine Loader: _____ 218. Machine Bucket: _____ 219. Machine Blade: _____ 220. Machine Fork: _____ 221. Machine Pallet Fork: _____ 222. Machine Backhoe: _____ 223. Machine Loader: _____ 224. Machine Bucket: _____ 225. Machine Blade: _____ 226. Machine Fork: _____ 227. Machine Pallet Fork: _____ 228. Machine Backhoe: _____ 229. Machine Loader: _____ 230. Machine Bucket: _____ 231. Machine Blade: _____ 232. Machine Fork: _____ 233. Machine Pallet Fork: _____ 234. Machine Backhoe: _____ 235. Machine Loader: _____ 236. Machine Bucket: _____ 237. Machine Blade: _____ 238. Machine Fork: _____ 239. Machine Pallet Fork: _____ 240. Machine Backhoe: _____ 241. Machine Loader: _____ 242. Machine Bucket: _____ 243. Machine Blade: _____ 244. Machine Fork: _____ 245. Machine Pallet Fork: _____ 246. Machine Backhoe: _____ 247. Machine Loader: _____ 248. Machine Bucket: _____ 249. Machine Blade: _____ 250. Machine Fork: _____ 251. Machine Pallet Fork: _____ 252. Machine Backhoe: _____ 253. Machine Loader: _____ 254. Machine Bucket: _____ 255. Machine Blade: _____ 256. Machine Fork: _____ 257. Machine Pallet Fork: _____ 258. Machine Backhoe: _____ 259. Machine Loader: _____ 260. Machine Bucket: _____ 261. Machine Blade: _____ 262. Machine Fork: _____ 263. Machine Pallet Fork: _____ 264. Machine Backhoe: _____ 265. Machine Loader: _____ 266. Machine Bucket: _____ 267. Machine Blade: _____ 268. Machine Fork: _____ 269. Machine Pallet Fork: _____ 270. Machine Backhoe: _____ 271. Machine Loader: _____ 272. Machine Bucket: _____ 273. Machine Blade: _____ 274. Machine Fork: _____ 275. Machine Pallet Fork: _____ 27			

The delivery report **[Figure 4]** contains a list of items that must be explained or shown to the owner or operator by the dealer when the Bobcat loader is delivered.

The delivery report must be reviewed and signed by the owner or operator and the dealer.

LOADER IDENTIFICATION



ITEM	DESCRIPTION	ITEM	DESCRIPTION
1	Operation & Maintenance Manual and Operator's Handbook	11	Lift Cylinder (Both Sides)
2	Front Lights	12	Rear Grille
3	Grab Handles	13	Back-up Alarm
4	Operator Seat with Seat Belt and Seat Bar	14	Rear Work Lights and Taillights
5	Tilt Cylinders	15	Rear Door
6	Bucket [A]	16	Rear Tie-down (Both Sides) Front Tie-down located behind Bucket
7	Bucket Steps	17	Track [C]
8	Step	18	Lift Arm Support Device
9	Alternate Front Tie-down (Both Sides)	19	Lift Arm
10	Front Auxiliary Quick Couplers	20	Operator Cab (ROPS and FOPS) [B]

[A] Bucket – Several different buckets and other attachments are available for the Bobcat loader.
 [B] ROPS – Roll-Over Protective Structure per ISO 3471 and FOPS – Falling-Object Protective Structure per ISO 3449, Level I. Level II is available.
 [C] Track – Standard tracks are shown. Track options are available for the Bobcat loader.

