

Farm Loaders Technical Manual TM-1298

**John Deere Welland Works
TM1298 (27JUN90)**

LITHO IN U.S.A.
ENGLISH

Introduction

FOREWORD

This manual is written for an experienced technician. Essential tools required in performing certain service work are identified in this manual and are recommended for use.

Live with safety: Read the safety messages in the introduction of this manual and the cautions presented throughout the text of the manual.



This is the safety-alert symbol. When you see this symbol on the machine or in this manual, be alert to the potential for personal injury.

Technical manuals are divided in two parts: repair and diagnostics. Repair sections tell how to repair the components. Diagnostic sections help you identify the majority of routine failures quickly.

Information is organized in groups for the various components requiring service instruction. At the beginning of each group are summary listings of all applicable essential tools, service equipment and tools, other materials needed to do the job, service parts kits, specifications, wear tolerances, and torque values.

Binders, binder labels, and tab sets can be ordered by John Deere dealers direct from the John Deere Distribution Service Center.

This manual is part of a total product support program.

FOS MANUALS—REFERENCE

TECHNICAL MANUALS—MACHINE SERVICE

COMPONENT MANUALS—COMPONENT SERVICE

Fundamentals of Service (FOS) Manuals cover basic theory of operation, fundamentals of troubleshooting, general maintenance, and basic type of failures and their causes. FOS Manuals are for training new personnel and for reference by experienced technicians.

Technical Manuals are concise guides for specific machines. Technical manuals are on-the-job guides containing only the vital information needed for diagnosis, analysis, testing, and repair.

Component Technical Manuals are concise service guides for specific components. Component technical manuals are written as stand-alone manuals covering multiple machine applications.

JOHN DEERE DEALERS

IMPORTANT: Please remove this page and route through your service department.

This is a complete revision for TM1298, Farm Loaders.

This manual was revised:

1. To include 80 and 110 Loaders.
2. To provide up to date Operating and Operational Specifications.
3. To include Loader/Cylinder identification.
4. To include installation of Competitive equipment adapters.
5. To include bucket bushing replacement.
6. To include 80 Loader boom bushing replacement.
7. To include 110 Loader boom bushing replacement.
8. To include up to date cylinder rebuilding information.
9. To include pressure oil connections for all tractors.

WX, TM1298, DPS -19-27 JUN 90

**Thanks very much for your reading,
Want to get more information,
Please click here, Then get the complete
manual**

JustClickHere 

NOTE:

**If there is no response to click on the link above,
please download the PDF document first, and then
click on it.**

**Have any questions please write to me:
admin@servicemanualperfect.com**

Contents

SECTION 10—INTRODUCTION AND SAFETY INFORMATION

- Group 05—Introduction Information
- Group 10—Safety
- Group 15—Loader/Tractor Compatibility
- Group 20—Serial Numbers
- Group 25—Lubricants
- Group 30—Hardware Torque

SECTION 20—SPECIFICATIONS

- Group 05—Loaders
- Group 10—Buckets
- Group 15—Cylinders

SECTION 30—BUCKETS

- Group 05—Replacing Cutting Edge
- Group 10—Installing Competitive Adapters
- Group 15—Installing Grapple Reinforcement
- Group 20—Replacing Digging Teeth
- Group 25—Replacing Bucket Bushings

SECTION 40—BOOM AND MASTS

- Group 05—Inspect Squareness
- Group 10—Replace Boom Bushings, 200 Series
- Group 15—Replace Mast Bushings, 200 Series
- Group 20—Replace Bushings 146, 148 And 158 Loaders
- Group 25—Replace Boom Bushings, 100 and 175 Loaders
- Group 30—Replace Bushings, 110 Loader
- Group 35—Replace Bushings, 80 Loader

SECTION 50—MOUNTING FRAMES

- Group 05—Modifying Mounting Frames
- Group 10—Adjusting Mast Wedges
- Group 15—Battery Box Revisions, 146 Loader On Tractor/SGB
- Group 20—Tighten Tractor Hardware
- Group 25—Tighten Mounting Frame Hardware

SECTION 60—CONTROLS

- Group 05—Adjust Cables
- Group 10—Change ICV Control Position

SECTION 70—HYDRAULIC COMPONENTS

- Group 05—Independent Control Valve
- Group 10—Regenerative Valve
- Group 15—Relief Valve
- Group 20—Self-Leveling Valve, 110 Loader
- Group 25—Cylinders
- Group 30—Hydraulic Connections, Independent Control Valve

SECTION 100—OPERATION AND TEST

- Group 05—Hose Connection Identification
- Group 10—Hydraulic Operational System
- Group 15—Operational Checkout Procedure
- Group 20—Diagnostic And Test Procedure

Index

All information, illustrations and specifications in this manual are based on the latest information available at the time of publication. The right is reserved to make changes at any time without notice.

TM1298-19-08JAN02

COPYRIGHT© 1990
DEERE & COMPANY
Moline, Illinois
All rights reserved
A John Deere ILLUSTRATION™ Manual
Previous Editions
Copyright 1989 Deere & Company

Contents

10

20

30

40

50

60

70

100

INDX

Section 10 INTRODUCTION AND SAFETY INFORMATION

Contents

Page

Group 05—Introduction Information

Group 10—Safety

Recognize Safety Information	10-10-1
Understand Signal Words	10-10-1
Avoid High-Pressure Fluids	10-10-1
Prepare For Emergencies	10-10-2
Be Informed	10-10-2
Understand Correct Service	10-10-2
Park Machine Safely	10-10-2
Detach Loader Safely	10-10-3
Support Raised Equipment	10-10-3
Prepare Machine For Repair	10-10-3
Wear Protective Equipment	10-10-4
Protect Against Flying Debris	10-10-4
Keep Rops Installed Properly	10-10-4
Inspect Machine	10-10-4
Practice Safe Maintenance	10-10-5
Dispose of Fuels Properly	10-10-5
Avoid Power Lines	10-10-6
Dig Safely	10-10-6
Live With Safety	10-10-6

Group 15—Loader/Tractor Compatibility

North American	10-15-1
European	10-15-2

Group 20—Serial Numbers

Locate Serial Number	
200 Series Loaders	10-20-1
100 Series Loaders	10-20-1

Group 25—Lubricants

Lubricating And Maintaining Loader	
Safely	10-25-1
Selecting Grease	10-25-1
Alternative Lubricants	10-25-2

Group 30—Hardware Torque

Inch Series Torque Chart	10-30-1
Metric Series Torque Chart	10-30-2

Contents



W12751
-UN-050CT88

W01,1005,A -19-27FEB87

DO NOT MODIFY MACHINE

Unauthorized modifications to the machine may impair the function and/or safety and affect machine life.

W01,12SY,H -19-04APR85

METRIC DESIGN

The 75, 80, 100, 175, 240, 245, 260, 265 and 280 Farm Loaders are of metric design. Specifications are given in metric with the US-customary equivalent following. Some specifications cannot be converted and appear in metric only. Most hardware is metric and must be replaced with metric hardware.



CAUTION: Use only metric tools on metric hardware. Other tools may not fit properly. They may slip and cause injury.

W01,1005,C -19-23NOV88

CUSTOMARY DESIGN

The other Farm Loaders are of customary design. Specifications are given in metric with the US-customary equivalent following. Some specifications cannot be converted and appear in US-customary measure only. Most hardware is English and must be replaced with English hardware.



CAUTION: Use only English tools on English hardware. Metric tools will not fit properly and may slip and cause injury.

W01,1005,D -19-16JAN87

RECOGNIZE SAFETY INFORMATION

This is the safety-alert symbol. When you see this symbol on your machine or in this manual, be alert to the potential for personal injury.

Follow recommended precautions and safe operating practices.



DX,ALERT -19-04JUN90

T81389 -UN-07DEC68

UNDERSTAND SIGNAL WORDS

A signal word—DANGER, WARNING, or CAUTION—is used with the safety-alert symbol. DANGER identifies the most serious hazards.

DANGER or WARNING safety signs are located near specific hazards. General precautions are listed on CAUTION safety signs. CAUTION also calls attention to safety messages in this manual.



DX,SIGNAL -19-04JUN90

TS187 -19-30SEP88

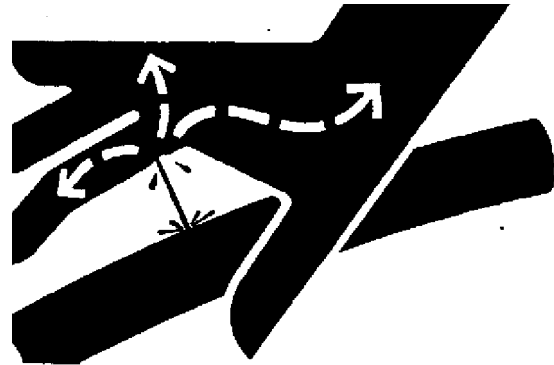
AVOID HIGH-PRESSURE FLUIDS

Escaping fluid under pressure can penetrate the skin causing serious injury.

Avoid the hazard by relieving pressure before disconnecting hydraulic or other lines. Tighten all connections before applying pressure.

Search for leaks with a piece of cardboard. Protect hands and body from high pressure fluids.

If an accident occurs, see a doctor immediately. Any fluid injected into the skin must be surgically removed within a few hours or gangrene may result. Doctors unfamiliar with this type of injury may call the Deere & Company Medical Department in Moline, Illinois, or other knowledgeable medical source.



DX,FLUID,NA -19-11JUN90

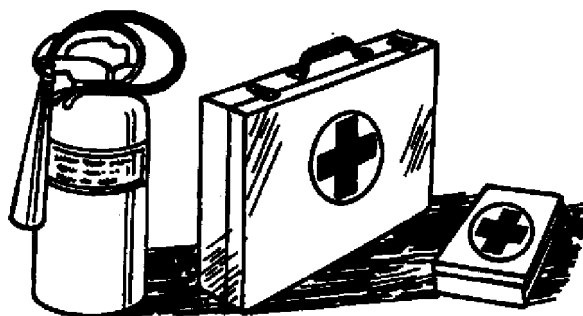
X9811 -UN-23AUG88

PREPARE FOR EMERGENCIES

Be prepared if a fire starts.

Keep a first aid kit and fire extinguisher handy.

Keep emergency numbers for doctors, ambulance service, hospital, and fire department near your telephone.

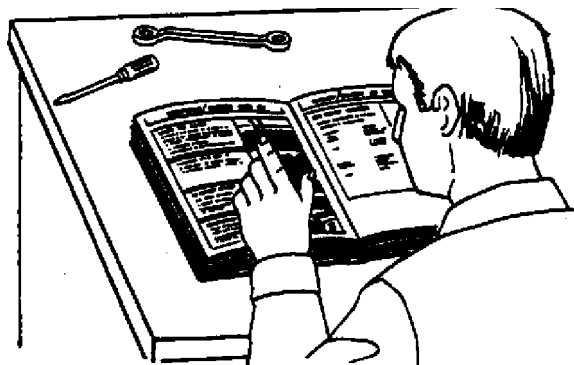


DX,FIRE2 -19-04JUN90

TS291
-UN-23AUG88

BE INFORMED

Use the machine and/or attachment Operator's Manual to assist you with operating and functional information when servicing.



W01,1010,A -19-16JAN87

TS183
-UN-23AUG88

UNDERSTAND CORRECT SERVICE

Be sure you understand a service procedure before you work on the machine.

If it is necessary to make checks with the engine running, ALWAYS USE TWO PEOPLE—with the operator at the controls, able to see the person doing the checking.

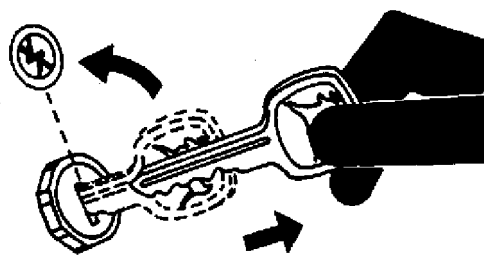
KEEP HANDS AWAY FROM MOVING PARTS.

W01,1010,D -19-16JAN87

PARK MACHINE SAFELY

Before working on the machine:

- Lower all equipment to the ground.
- Stop the engine and remove the key.
- Disconnect the battery ground strap.
- Hang a "DO NOT OPERATE" tag in operator station.



DX,PARK -19-04JUN90

TS230
-UN-24MAY89

DETACH LOADER SAFELY

Detach the loader on a hard, level surface.

Before disconnecting hydraulic hoses, relieve all hydraulic pressure.



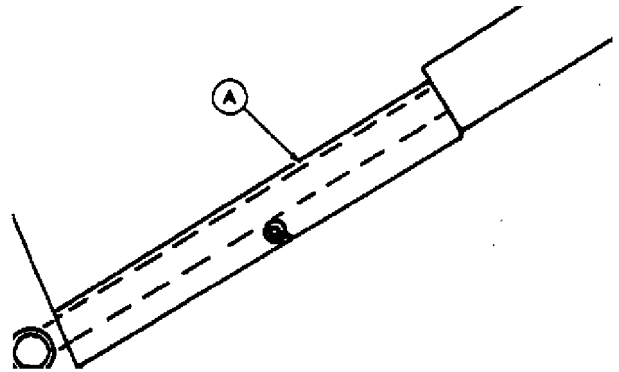
W01,1SY,A -19-01MAR88

W14000 -UN-05OCT88

SUPPORT RAISED EQUIPMENT

Place support (A) on lift cylinder rod when cylinder is extended and machine is raised.

Do not work under a raised bucket. Lower the bucket to the ground or onto blocks.



W01,1010,C -19-16JAN87

W12259 -UN-10MAY89

PREPARE MACHINE FOR REPAIR

1. Lower loader to the ground.
2. Place transmission in PARK or engage parking brake.
3. Stop the engine.
4. Operate all hydraulic control levers to release hydraulic pressure in the system.
5. If extensive repair is required, remove loader from tractor.



W01,1010,F -19-16JAN87

W11723 -UN-06OCT88

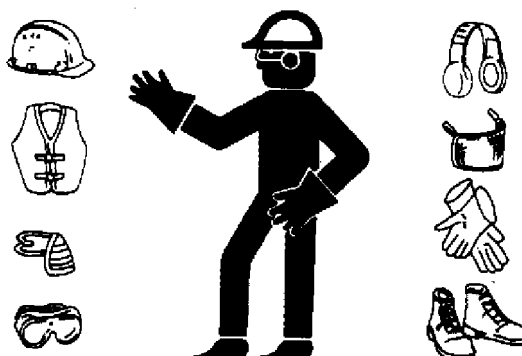
10
10
4

WEAR PROTECTIVE CLOTHING

Wear close fitting clothing and safety equipment appropriate to the job.

Prolonged exposure to loud noise can cause impairment or loss of hearing.

Wear a suitable hearing protective device such as earmuffs or earplugs to protect against objectionable or uncomfortable loud noises.



DX,WEAR -19-04JUN90

TS206
-UN-23AUG88

PROTECT AGAINST FLYING DEBRIS

When driving pins in or out, guard against injury from flying pieces of metal or debris. Wear goggles or safety glasses, hard hat and gloves.



W01,1010,G -19-16JAN87

W12729
-UN-05OCT88

KEEP ROPS INSTALLED PROPERLY

IF ROLL-GARD® protective frame or ROLL-OVER protective equipment is loosened or removed for any reason, make certain all parts are reinstalled correctly. Tighten mounting bolts to proper torque. The protection offered by ROPS will be impaired if the ROPS is subject to structural damage, has been involved in an overturn incident or is in anyway altered. Damaged ROPS should be replaced, not reused.



T82,BHSA,AB -19-25JAN83

T88915
-UN-09NOV88

INSPECT MACHINE

Inspect machine carefully before servicing.



W01,1010,E -19-16JAN87

W12726
-UN-05OCT88

PRACTICE SAFE MAINTENANCE

Understand service procedure before doing work. Keep area clean and dry.

Never lubricate or service machine while it is moving. Keep hands, feet, and clothing from power-driven parts. Disengage all power and operate controls to relieve pressure. Lower equipment to the ground. Stop the engine. Remove the key. Allow machine to cool.

Securely support any machine elements that must be raised for service work.

Keep all parts in good condition and properly installed. Fix damage immediately. Replace worn or broken parts. Remove any buildup of grease, oil, or debris.

Disconnect battery ground cable (-) before making adjustments on electrical systems or welding on machine.



DX,SERV -19-04JUN90

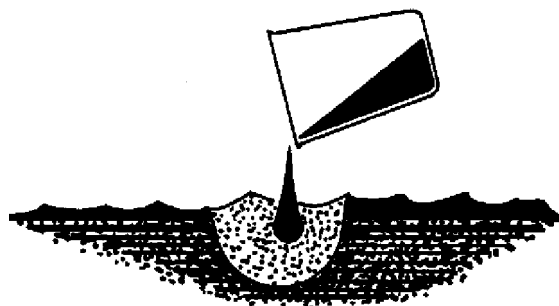
TS218 -UN-23AUG88

DISPOSE OF FLUIDS PROPERLY

Improperly disposing of fluids can harm the environment and ecology. Before draining any fluids, find out the proper way to dispose of waste from your local environmental agency.

Use proper containers when draining fluids. Do not use food or beverage containers that may mislead someone into drinking from them.

DO NOT pour oil into the ground, down a drain, or into a stream, pond, or lake. Observe relevant environmental protection regulations when disposing of oil, fuel, coolant, brake fluid, filters, batteries, and other harmful waste.



DX,DRAIN -19-05JUN90

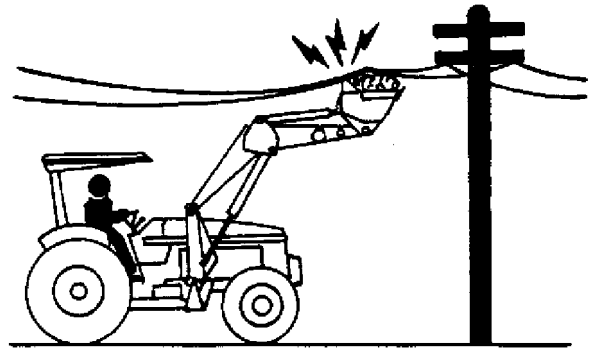
TS222 -UN-23AUG88

AVOID POWER LINES

Serious injury or death can result from contact with electric lines. Use care to avoid contact with electric lines when moving or operating the loader.

Beware of lift clearance when raising loader to maximum height.

Do not dismount from tractor if any component is in contact with lines.



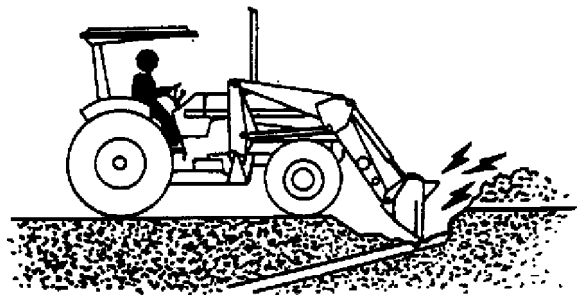
W01,1SY,E -19-10AUG88

W14321 -UN-02FEB89

DIG SAFELY

Before digging, check location of cables, gas lines and water lines.

Do not dismount from tractor if any component is in contact with lines.



W01,1SY,F -19-10AUG88

W14322 -UN-02FEB89

LIVE WITH SAFETY

Before returning machine to customer, make sure machine is functioning properly, especially the safety systems. Install all guards and shields.



DX,LIVE -19-04JUN90

TS231 -19-07OCT88

Group 15 Loader/Tractor Compatibility

NORTH AMERICAN

Loader	Tractor
75	850*, 950*, 1050*
80	850*, 950*, 1050*, 870*, 970*, 1070*
100	1250*, 1450*, 1650*
110	2155GP, 2355GP*, 2555GP*, 2755GP*
146	2020, 2120, 1830, 2030, 2130 HFWD, 2630, 1640, 1840, 2140, 2240, 2440, 2640, 2150, 2350, 2550, 2750, 2155, 2255, 2355, 2355N, 2555, 2755, 2855N
148	2520, 3020, 4000, 4020, 4320, 3130, 3130 HFWD, 4030, 4030 HFWD, 4230, 4230 HFWD, 4430, 4430 HFWD, 2840, 2940, 3140, 4040, 4040 HFWD, 4240, 4240 HFWD, 4440, 4440 HFWD, 2950, 2955, 4050, 4250, 4055, 4255
158	4000, 4020, 4320, 4520, 4620, 4230, 4230 HFWD, 4430, 4430 HFWD, 4630, 4040, 4040 HFWD, 4240, 4240 HFWD, 4440, 4440 HFWD, 4050, 4250, 4450, 4055, 4255, 4455
175	820, 920, 1020, 1120, 1520, 2020, 2120, 830, 1030, 1530, 1630, 1830, 2030, 2130, 2130 HFWD, 2630, 1040, 1140, 1640, 1840*, 2040*, 2140, 2240*, 2440, 2640, 2150*, 2350*, 2550*, 2750*, 2155*, 2355*, 2355N, 2555*, 2755*, 2855N
245	2020, 2120, 1830, 2030, 2130, 2130 HFWD, 2630, 1640, 1840*, 2140, 2440, 2640, 2350*, 2550*, 2750*, 2355*, 2555*, 2755*
260 and 265	3130, 3130 HFWD, 4030, 4030 HFWD, 4230, 4230 HFWD, 4430, 4430 HFWD, 2840, 2940*, 3140*, 4040, 4040 HFWD, 4240, 4240 HFWD, 4440, 4440 HFWD, 2950*, 3150 MFWD, 4050, 4250, 2955*, 3155 MFWD
265	4050 MFWD, 4250 MFWD, 4450, 4055, 4255*, 4455
280	4640, 4640 HFWD, 4840, 4050 MFWD, 4250 MFWD, 4450*, 4650*, 4850*, 4055 MFWD, 4255 MFWD, 4455 MFWD, 4555*, 4755*, 4955*

* Both 2-Wheel Drive and MFWD

W01,1015,A -19-23NOV88