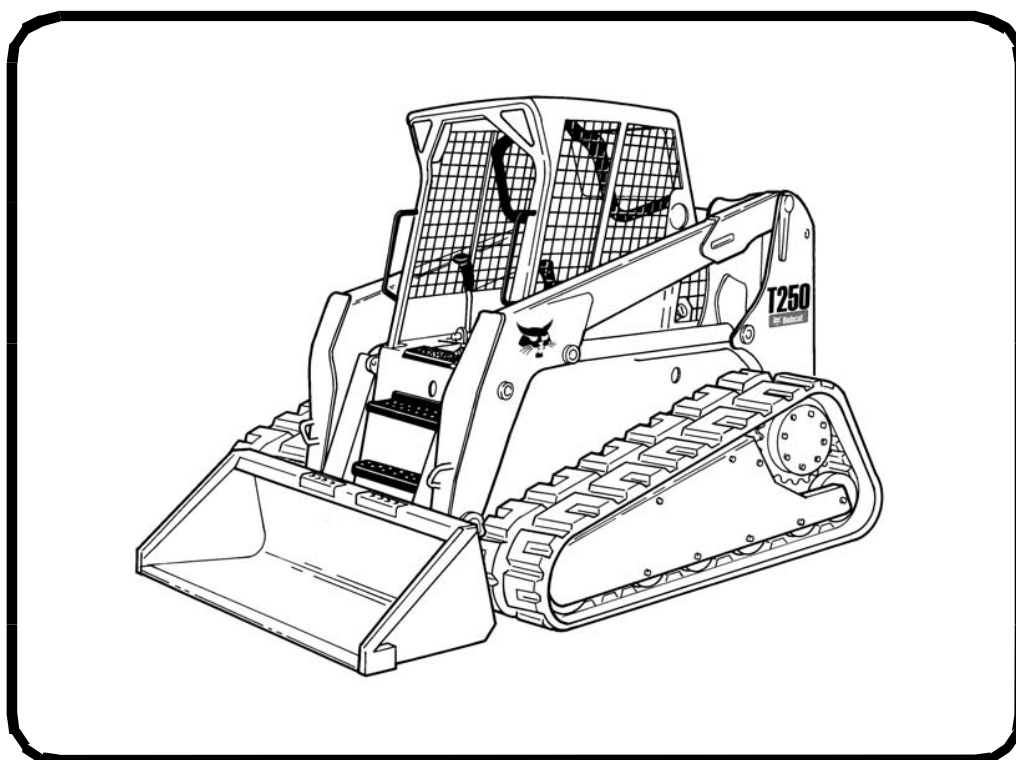




Service Manual

T250 Compact Track Loader

S/N 531811001 & Above
S/N 531911001 & Above



**EQUIPPED WITH
BOBCAT INTERLOCK
CONTROL SYSTEM (BICS™)**



MAINTENANCE SAFETY



WARNING

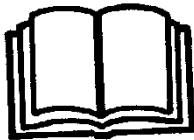
Instructions are necessary before operating or servicing machine. Read and understand the Operation & Maintenance Manual, Operator's Handbook and signs (decals) on machine. Follow warnings and instructions in the manuals when making repairs, adjustments or servicing. Check for correct function after adjustments, repairs or service. Untrained operators and failure to follow instructions can cause injury or death.

W-2003-0903



Safety Alert Symbol: This symbol with a warning statement, means: "Warning, be alert! Your safety is involved!" Carefully read the message that follows.

CORRECT

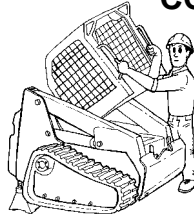


B-10731a



Never service the Bobcat Compact Track Loader without instructions.

CORRECT



B-15659



Use the correct procedure to lift or lower operator cab.

CORRECT



B-15660



Cleaning and maintenance are required daily.

WRONG



B-15664

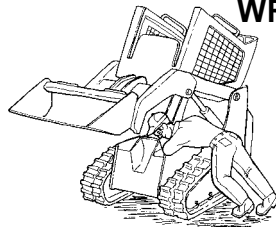


Have good ventilation when welding or grinding painted parts. Wear dust mask when grinding painted parts. Toxic dust and gas can be produced.



Avoid exhaust fume leaks which can kill without warning. Exhaust system must be tightly sealed.

WRONG

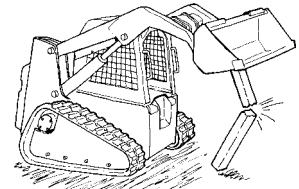


B-15661



Disconnecting or loosening any hydraulic tubeline, hose, fitting, component or a part failure can cause lift arms to drop. Do not go under lift arms when raised unless supported by an approved lift arm support device. Replace it if damaged.

WRONG



B-15662

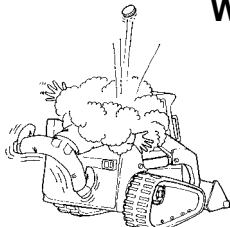


Never work on loader with lift arms up unless lift arms are held by an approved lift arm support device. Replace if damaged.



Never modify equipment or add attachments not approved by Bobcat Company.

WRONG



B-15665



Stop, cool and clean engine of flammable materials before checking fluids.



Never service or adjust loader with the engine running unless instructed to do so in the manual.

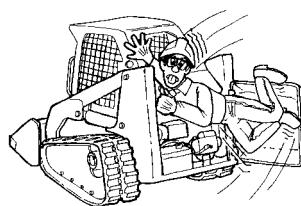


Avoid contact with leaking hydraulic fluid or diesel fuel under pressure. It can penetrate the skin or eyes.



Never fill fuel tank with engine running, while smoking or when near open flame.

WRONG



B-15663



Keep body, jewelry and clothing away from moving parts, electrical contact, hot parts and exhaust.



Wear eye protection to guard from battery acid, compressed springs, fluids under pressure and flying debris when engines are running or tools are used. Use eye protection approved for type of welding.



Keep rear door closed except for service. Close and latch door before operating the loader.

WRONG



B-6589



Lead-acid batteries produce flammable and explosive gases.



Keep arcs, sparks, flames and lighted tobacco away from batteries.



Batteries contain acid which burns eyes or skin on contact. Wear protective clothing. If acid contacts body, flush well with water. For eye contact flush well and get immediate medical attention.

Maintenance procedures which are given in the Operation & Maintenance Manual can be performed by the owner/operator without any specific technical training. Maintenance procedures which are **not** in the Operation & Maintenance Manual must be performed **ONLY BY QUALIFIED BOBCAT SERVICE PERSONNEL**. Always use **genuine Bobcat replacement parts**. The Service Safety Training Course is available from your Bobcat dealer.



Bobcat®

ALPHABETICAL INDEX

| | | | |
|---|--------------|---|--------------|
| ACCESS PANEL (INSIDE) | 50-01 | ELECTRICAL / HYDRAULIC CONTROLS..... | 60-01 |
| ACCESS PANEL (INSIDE) (SJC) | 50-01 | ELECTRICAL / HYDRAULIC CONTROLS (SJC).... | 60-01 |
| AIR CLEANER | 70-01 | ELECTRICAL SYSTEM INFORMATION..... | 60-01 |
| AIR CLEANER SERVICE | 10-01 | ENGINE COOLING SYSTEM | 10-01, 70-01 |
| AIR CONDITIONING SYSTEM FLOW | 80-01 | ENGINE INFORMATION | 70-01 |
| ALTERNATOR | 60-01 | ENGINE LUBRICATION SYSTEM | 10-01 |
| | | ENGINE SPEED CONTROL | 70-01 |
| BACK-UP ALARM SYSTEM | 60-01 | ENGINE SPEED CONTROL (SJC)..... | 70-01 |
| BATTERY | 60-01 | EVAPORATOR | 80-01 |
| BOBCAT CONTROLLER (ACS) | 60-01 | EVAPORATOR / HEATER UNIT..... | 80-01 |
| BOBCAT CONTROLLER (MAIN)..... | 60-01 | EXPANSION VALVE | 80-01 |
| BOBCAT CONTROLLER (SJC) (DRIVE) | 60-01 | | |
| BOBCAT INTERLOCK CONTROL SYSTEM | | FLYWHEEL AND HOUSING | 70-01 |
| (BICS) | 60-01 | FLYWHEEL RPM SENSOR | 60-01 |
| BLOWER FAN | 80-01 | FRONT AUXILIARY HYDRAULIC COUPLER | |
| BOB-TACH (HAND LEVER) | 10-01, 50-01 | BLOCK | 20-01 |
| BOB-TACH (POWER - OPTION)..... | 10-01, 50-01 | FUEL SYSTEM..... | 10-01, 70-01 |
| BOB-TACH (POWER) BLOCK..... | 20-01 | FUEL TANK | 50-01 |
| BRAKE | 40-01 | | |
| BUCKET POSITION VALVE | 20-01 | HEATER COIL | 80-01 |
| | | HEATER VALVE | 80-01 |
| CAB DOOR | 50-01 | HYDRAULIC CONNECTION SPECIFICATIONS.. | SPEC-01 |
| CALIBRATION | | HYDRAULIC CONTROL VALVE (ACS) OR (SJC) .. | 20-01 |
| (SELECTABLE JOYSTICK CONTROL) (SJC) | 60-01 | HYDRAULIC CONTROL VALVE (STANDARD) | 20-01 |
| CAMSHAFT AND TIMING GEARS..... | 70-01 | HYDRAULIC FLUID RESERVOIR | 20-01 |
| CASE DRAIN FILTER | 30-01 | HYDRAULIC / HYDROSTATIC FILTERS | 20-01 |
| CHARGE PRESSURE | 30-01 | HYDRAULIC / HYDROSTATIC FLUID | |
| COMPRESSOR | 80-01 | SPECIFICATIONS | SPEC-01 |
| CONDENSER | 80-01 | HYDRAULIC / HYDROSTATIC SYSTEM..... | 10-01 |
| CONTROL HANDLE / LEVER | 50-01 | HYDRAULIC PUMP (STANDARD)..... | 20-01 |
| CONTROL HANDLE / LEVER (ACS) | 50-01 | HYDRAULIC PUMP (STANDARD) (HIGH FLOW) .. | 20-01 |
| CONTROL HANDLE / LEVER (SJC)..... | 50-01 | HYDRAULIC PUMP (SJC) (HI FLOW)..... | 20-01 |
| CONTROL PANEL (SJC)..... | 50-01 | HYDRAULIC PUMP (SJC) | 20-01 |
| CONTROL PANEL | 50-01 | HYDRAULIC SYSTEM INFORMATION | 20-01 |
| CONTROL PANEL SETUP | 60-01 | HYDROSTATIC MOTOR | 30-01 |
| CONTROL PEDALS AND LINKAGES..... | 50-01 | HYDROSTATIC PUMP | 30-01 |
| CONTROL PEDALS (ACS) | 50-01 | HYDROSTATIC PUMP (SJC)..... | 30-01 |
| CONTROL SYSTEM (ACS)..... | 60-01 | HYDROSTATIC SYSTEM INFORMATION | 30-01 |
| CONVERSIONS | SPEC-01 | | |
| CRANKSHAFT AND PISTONS | 70-01 | INSTRUMENT PANEL..... | 60-01 |
| CYLINDER HEAD | 70-01 | | |
| CYLINDER (LIFT) | 20-01 | JOYSTICK CONTROL | 50-01 |
| CYLINDER (BOB-TACH) | 20-01 | | |
| CYLINDER (TILT) | 20-01 | LIFT ARMS | 50-01 |
| | | LIFT ARM BYPASS CONTROL VALVE | 20-01 |
| DIAGNOSTICS SERVICE CODES | 60-01 | LIFT ARM SUPPORT DEVICE | 10-01 |
| DRIVE BELT | 30-01 | LIFTING AND BLOCKING THE LOADER..... | 10-01 |
| | | LIGHTS | 60-01 |
| | | T250 LOADER SPECIFICATIONS..... | SPEC-01 |
| | | LOADER STORAGE AND RETURN | |
| | | TO SERVICE | 10-01 |
| | | LUBRICATION SYSTEM | 70-01 |
| | | LUBRICATING THE LOADER..... | 10-01 |
| | | | |
| | | MAIN RELIEF VALVE | 20-01 |
| | | MAINTENANCE CLOCK | 60-01 |
| | | MUFFLER..... | 70-01 |

ALPHABETICAL INDEX (CONT'D)

| | |
|---|--------------|
| OIL COOLER..... | 20-01 |
| OPERATOR CAB..... | 10-01, 50-01 |
| OPERATOR SEAT - SUSPENSION | 50-01 |
| PASSWORD SETUP | 60-01 |
| PIVOT PINS | 10-01 |
| REAR AUXILIARY DIVERTER VALVE | 20-01 |
| REAR DOOR | 50-01 |
| REAR GRILL | 50-01 |
| RECEIVER / DRIER | 80-01 |
| REGULAR MAINTENANCE | 80-01 |
| REMOTE START TOOL KIT-MEL1563 | 10-01 |
| REMOTE START TOOL (SERVICE TOOL) KIT-6689779 | 10-01 |
| SEAT BAR | 50-01 |
| SEAT BAR SENSOR | 60-01 |
| SERVICE PC (LAPTOP COMPUTER) | 60-01 |
| SERVICE SCHEDULE | 10-01 |
| SPARK ARRESTOR MUFFLER | 10-01 |
| SPEED SENSORS (SJC)..... | 60-01 |
| STARTER | 60-01 |
| STEERING DRIFT COMPENSATION | 60-01 |
| STOPPING THE ENGINE AND LEAVING THE LOADER..... | 10-01 |
| SYSTEM CHARGING AND RECLAMATION | 80-01 |
| THERMOSTAT..... | 80-01 |
| TORQUE SPECIFICATIONS FOR BOLTS..... | SPEC-01 |
| TOWING THE LOADER | 10-01 |
| TRACK CARRIAGE COMPONENTS | 40-01 |
| TRACTION LOCK..... | 60-01 |
| TRANSPORTING LOADER ON A TRAILER | 10-01 |
| TROUBLESHOOTING..... | 80-01 |
| TURBOCHARGER | 70-01 |
| WINDOW (FRONT DOOR) | 50-01 |
| WINDOW (REAR)..... | 50-01 |
| WINDOW (SIDE) | 50-01 |
| WINDOW (TOP) | 50-01 |
| ACS- ADVANCED CONTROL SYSTEM | |
| AHC- ADVANCED HAND CONTROL SYSTEM | |
| BICS™-BOBCAT INTERLOCK CONTROL SYSTEM | |

CONTENTS

**SAFETY &
MAINTENANCE**

**HYDRAULIC
SYSTEM**

**HYDROSTATIC
SYSTEM**

**DRIVE
SYSTEM**

MAIN FRAME

**ELECTRICAL
SYSTEM &
ANALYSIS**

**ENGINE
SERVICE**

HVAC

SPECIFICATIONS

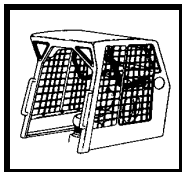
| | |
|--|---------|
| FOREWORD..... | II |
| SAFETY INSTRUCTIONS | V |
| FIRE PREVENTION | VII |
| SERIAL NUMBER LOCATIONS | IX |
| DELIVERY REPORT..... | X |
| LOADER IDENTIFICATION | XI |
| SAFETY AND MAINTENANCE..... | 10-01 |
| HYDRAULIC SYSTEM | 20-01 |
| HYDROSTATIC SYSTEM..... | 30-01 |
| DRIVE SYSTEM | 40-01 |
| MAIN FRAME | 50-01 |
| ELECTRICAL SYSTEM & ANALYSIS..... | 60-01 |
| ENGINE SERVICE | 70-01 |
| HEATING, VENTILATION, AIR CONDITIONING | 80-01 |
| SPECIFICATIONS..... | SPEC-01 |

FOREWORD

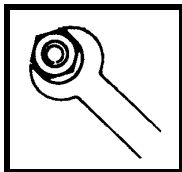
This manual is for the Bobcat loader mechanic. It provides necessary servicing and adjustment procedures for the Bobcat loader and its component parts and systems. Refer to the Operation & Maintenance Manual for operating instructions, starting procedure, daily checks, etc.

A general inspection of the following items must be made after the loader has had service or repair:

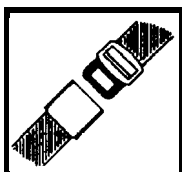
1. Check that the ROPS/FOPS (Including side screens) is in good condition and is not modified.



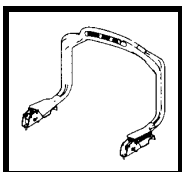
2. Check that ROPS mounting hardware is tightened and is Bobcat approved.



3. The seat belt must be correctly installed, functional and in good condition.



4. The seat bar must be correctly adjusted, clean and lubricated.



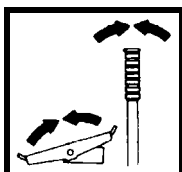
5. Check lift arm support device, replace if damaged.



6. Machine signs (decals) must be legible and in the correct location.



7. Steering levers, hand controls and foot pedals must return to neutral (as applicable).



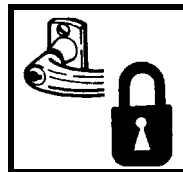
8. Check for correct function of the work lights.



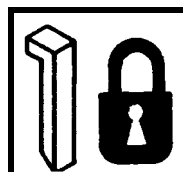
9. The parking brake must function correctly.



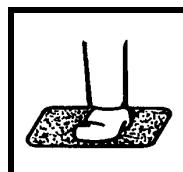
10. Enclosure door latches must open and close freely.



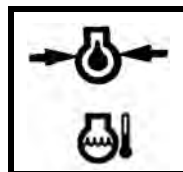
11. Bob-Tach wedges and linkages must function correctly and be in good condition.



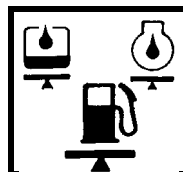
12. Safety treads must be in good condition.



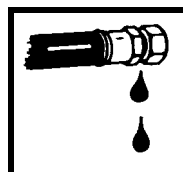
13. Check for correct function of indicator lamps.



14. Check hydraulic fluid level, engine oil level and fuel supply.



15. Inspect for fuel, oil or hydraulic fluid leaks.

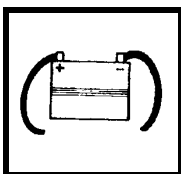


16. Lubricate the loader.

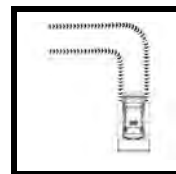


FW SSL-1008 SM

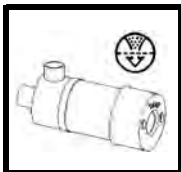
17. Check the condition of the battery and cables.



23. Operate the machine and check all functions.



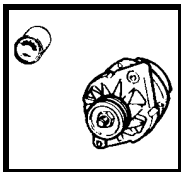
18. Inspect the air cleaner for damage or leaks. Check the condition of the element.



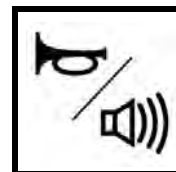
24. Check for correct function of the Bobcat Interlock Control System (BICS™) before the machine is returned to the customer.



19. Check the electrical charging system.



25. Check for proper function of front horn and back-up alarm (if equipped).



20. Check tires for wear and pressure. Check tracks for wear and tension. Use only approved tires or tracks.



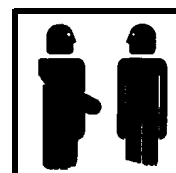
26. Check function or condition of all equipped options and accessories (examples: fire extinguisher, rotating beacon, lift kits, etc.).



21. Inspect for loose or broken parts or connections.



27. Recommend to the owner that all necessary corrections be made before the machine is returned to service.



22. Check for any field modification not completed.



CALIFORNIA
PROPOSITION 65 WARNING
Diesel engine exhaust and some of its constituents are known to the state of California to cause cancer, birth defects and other reproductive harm.



SAFETY INSTRUCTIONS



Safety Alert Symbol

This symbol with a warning statement means:
"Warning, be alert! Your safety is involved!"
Carefully read the message that follows.



WARNING

Instructions are necessary before operating or servicing machine. Read and understand the Operation & Maintenance Manual, Operator's Handbook and signs (decals) on machine. Follow warnings and instructions in the manuals when making repairs, adjustments or servicing. Check for correct function after adjustments, repairs or service. Untrained operators and failure to follow instructions can cause injury or death.

W-2003-0903

IMPORTANT

This notice identifies procedures which must be followed to avoid damage to the machine.

I-2019-0284



DANGER

The signal word DANGER on the machine and in the manuals indicates a hazardous situation which, if not avoided, will result in death or serious injury.

D-1002-1107



WARNING

The signal word WARNING on the machine and in the manuals indicates a potentially hazardous situation which, if not avoided, could result in death or serious injury.

W-2044-1107

The following publications provide information on the safe use and maintenance of the Bobcat machine and attachments:

- The Delivery Report is used to assure that complete instructions have been given to the new owner and that the machine is in safe operating condition.
- The Operation & Maintenance Manual delivered with the machine or attachment contains operating information as well as routine maintenance and service procedures. It is a part of the machine and can be stored in a container provided on the machine. Replacement Operation & Maintenance Manuals can be ordered from your Bobcat dealer.
- Machine signs (decals) instruct on the safe operation and care of your Bobcat machine or attachment. The signs and their locations are shown in the Operation & Maintenance Manual. Replacement signs are available from your Bobcat dealer.
- An Operator's Handbook fastened to the operator cab. It's brief instructions are convenient to the operator. The handbook is available from your dealer in an English edition or one of many other languages. See your Bobcat dealer for more information on translated versions.
- The AEM Safety Manual delivered with the machine gives general safety information.
- The Service Manual and Parts Manual are available from your dealer for use by mechanics to do shop-type service and repair work.
- The Skid-Steer Loader Operator Training Course is available through your local dealer or at www.training.bobcat.com or www.bobcat.com. This course is intended to provide rules and practices of correct operation of the Skid-Steer Loader. The course is available in English and Spanish versions.
- Service Safety Training Courses are available from your Bobcat dealer or at www.training.bobcat.com or www.bobcat.com. They provide information for safe and correct service procedures.
- The Skid-Steer Loader Safety Video is available from your Bobcat dealer or at www.training.bobcat.com or www.bobcat.com.

SAFETY INSTRUCTIONS (CONT'D)

The dealer and owner / operator review the recommended uses of the product when delivered. If the owner / operator will be using the machine for a different application(s) he or she must ask the dealer for recommendations on the new use.



Cutting or drilling concrete containing sand or rock containing quartz may result in exposure to silica dust. Do not exceed Permissible Exposure Limits (PEL) to silica dust as determined by OSHA or other job site Rules and Regulations. Use a respirator, water spray or other means to control dust. Silica dust can cause lung disease and is known to the state of California to cause cancer.

Call Before You Dig
Dial 811 (USA Only)
1-888-258-0808 (USA & Canada)

When you call, you will be directed to a location in your state / province, or city for information about buried lines (telephone, cable TV, water, sewer, gas, etc.).

FIRE PREVENTION



Maintenance

The machine and some attachments have components that are at high temperatures under normal operating conditions. The primary source of high temperatures is the engine and exhaust system. The electrical system, if damaged or incorrectly maintained, can be a source of arcs or sparks.

Flammable debris (leaves, straw, etc.) must be removed regularly. If flammable debris is allowed to accumulate, it can cause a fire hazard. Clean often to avoid this accumulation. Flammable debris in the engine compartment is a potential fire hazard.

The operator's area, engine compartment and engine cooling system must be inspected every day and cleaned if necessary to prevent fire hazards and overheating.

All fuels, most lubricants and some coolants mixtures are flammable. Flammable fluids that are leaking or spilled onto hot surfaces or onto electrical components can cause a fire.

Operation

Do not use the machine where exhaust, arcs, sparks or hot components can contact flammable material, explosive dust or gases.

Electrical



Check all electrical wiring and connections for damage. Keep the battery terminals clean and tight. Repair or replace any damaged part or wires that are loose or frayed.

Battery gas can explode and cause serious injury. Use the procedure in the Operation & Maintenance Manual for connecting the battery and for jump starting. Do not jump start or charge a frozen or damaged battery. Keep any open flames or sparks away from batteries. Do not smoke in battery charging area.

Hydraulic System

Check hydraulic tubes, hoses and fittings for damage and leakage. Never use open flame or bare skin to check for leaks. Hydraulic tubes and hoses must be properly routed and have adequate support and secure clamps. Tighten or replace any parts that show leakage.

Always clean fluid spills. Do not use gasoline or diesel fuel for cleaning parts. Use commercial nonflammable solvents.

Fueling



Stop the engine and let it cool before adding fuel. No smoking! Do not refuel a machine near open flames or sparks. Fill the fuel tank outdoors.

Starting

Do not use ether or starting fluids on any engine that has glow plugs or air intake heater. These starting aids can cause explosion and injure you or bystanders.

Use the procedure in the Operation & Maintenance Manual for connecting the battery and for jump starting.

Spark Arrestor Exhaust System

The spark arrestor exhaust system is designed to control the emission of hot particles from the engine and exhaust system, but the muffler and the exhaust gases are still hot.

Check the spark arrestor exhaust system regularly to make sure it is maintained and working properly. Use the procedure in the Operation & Maintenance Manual for cleaning the spark arrestor muffler (if equipped).

FIRE PREVENTION (CONT'D)

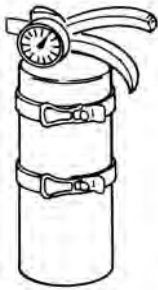
Welding And Grinding

Always clean the machine and attachment, disconnect the battery, and disconnect the wiring from the Bobcat controllers before welding. Cover rubber hoses, battery and all other flammable parts. Keep a fire extinguisher near the machine when welding.

Have good ventilation when grinding or welding painted parts. Wear dust mask when grinding painted parts. Toxic dust or gas can be produced.

Dust generated from repairing nonmetallic parts such as hoods, fenders or covers can be flammable or explosive. Repair such components in a well ventilated area away from open flames or sparks.

Fire Extinguishers



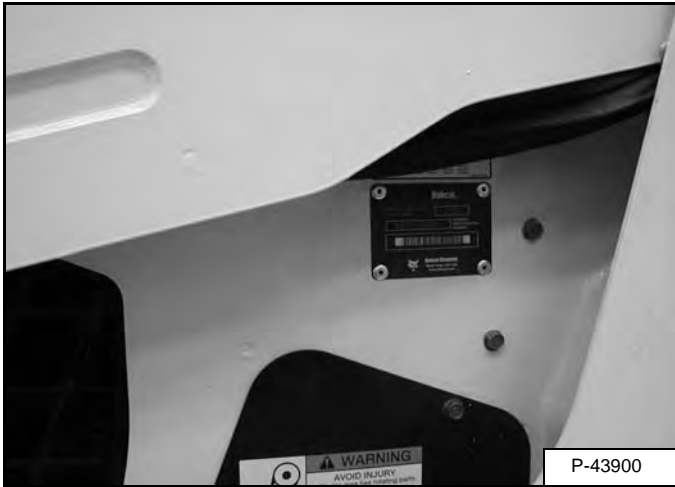
Know where fire extinguishers and first aid kits are located and how to use them. Inspect the fire extinguisher and service the fire extinguisher regularly. Obey the recommendations on the instructions plate.

SERIAL NUMBER LOCATIONS

Always use the serial number of the loader when requesting service information or when ordering parts. Early or later models (identification made by serial number) may use different parts, or it may be necessary to use a different procedure in doing a specific service operation.

Loader Serial Number

Figure 1



The loader serial number plate is located on the outside of the loader frame [Figure 1].

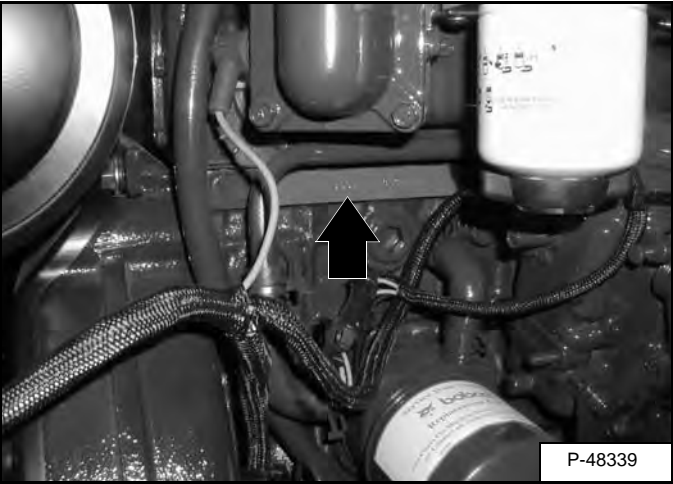
Explanation of loader Serial Number:

| XXXX | XXXXX |
|------------------------------------|---------------------------------------|
| Model 1.-Model/ Engine Combination | Model 2.-Production Sequence (Series) |

- 1. The four digit Model/Engine Combination Module number identifies the model number and engine combination.
- 2. The five digit Production Sequence Number identifies the order which the loader is produced.

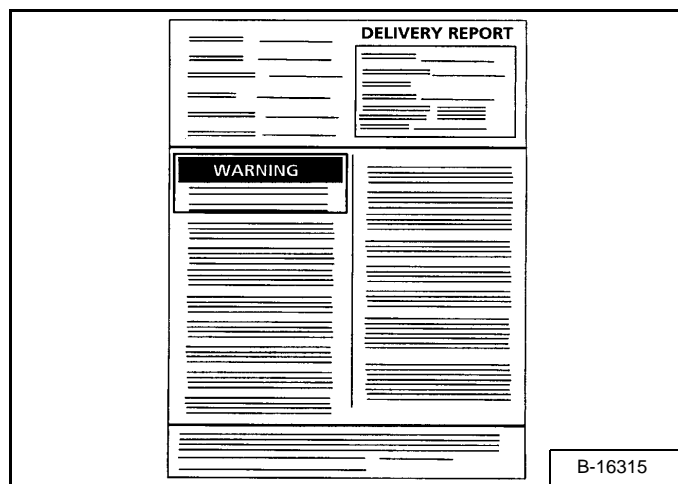
Engine Serial Number

Figure 2



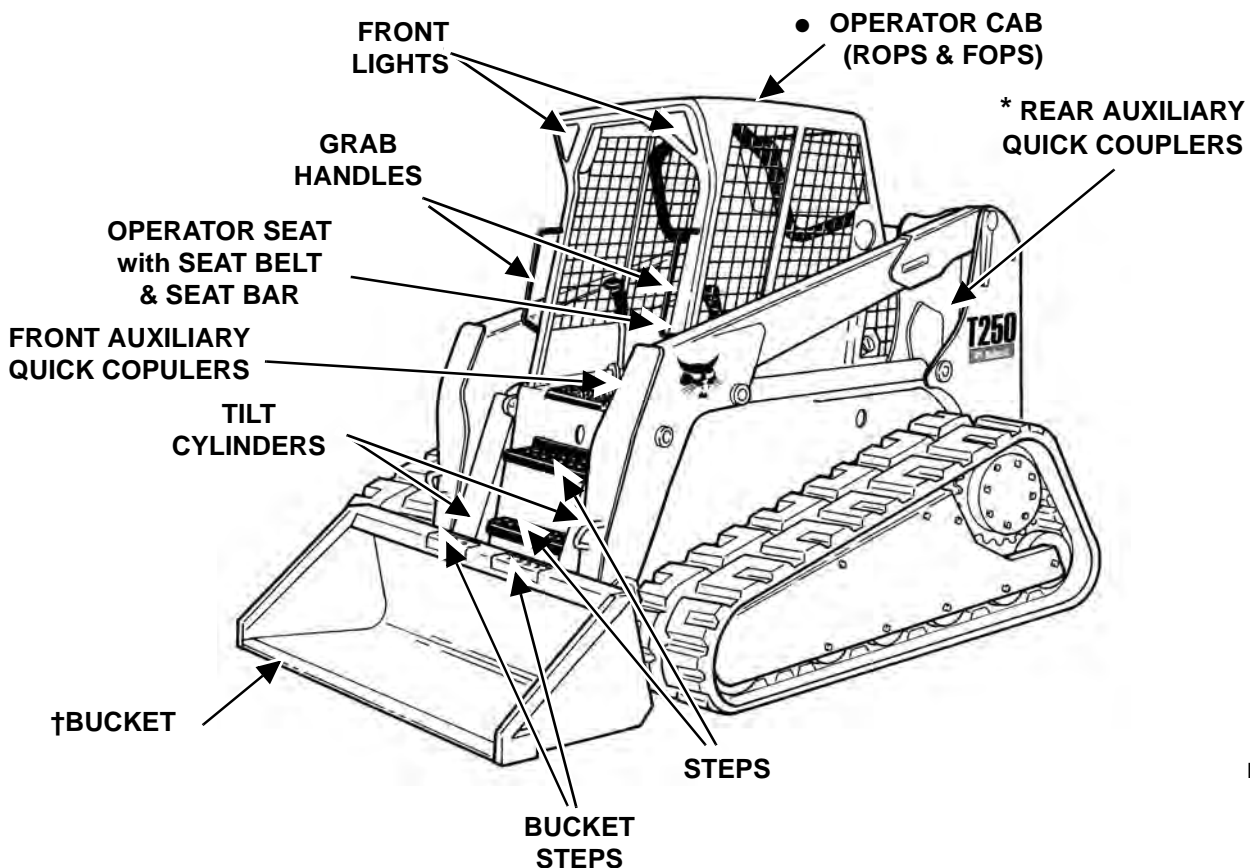
The engine serial number is located on the engine block [Figure 2].

Figure 3

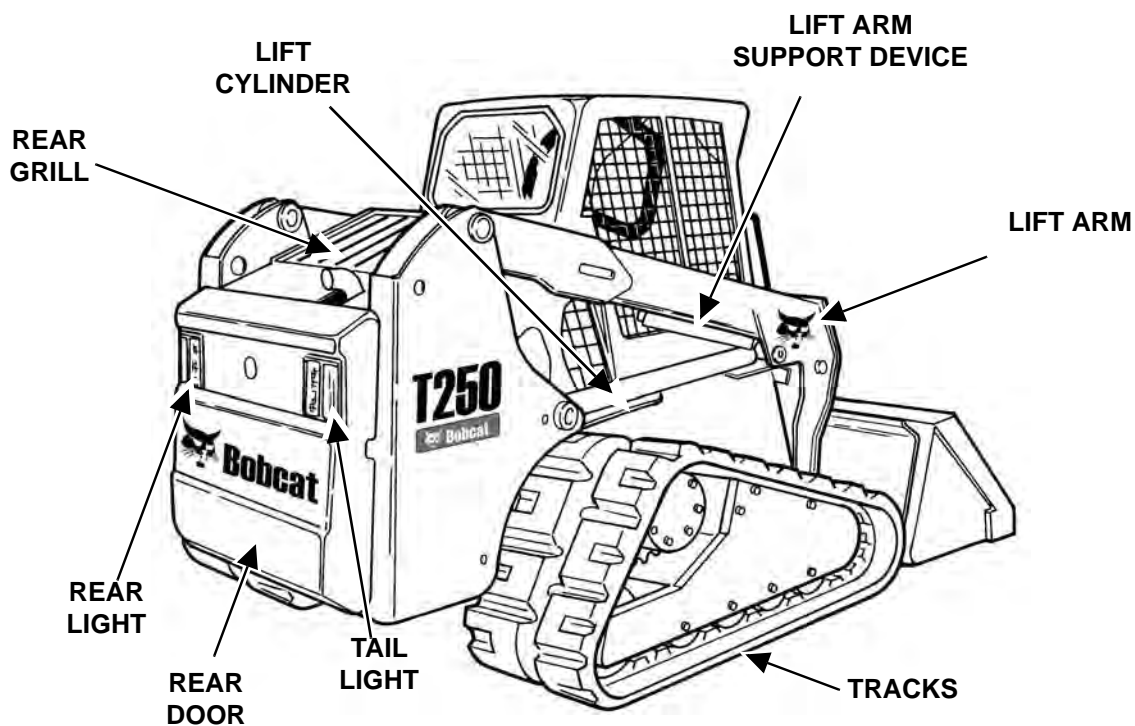


The Delivery Report must be filled out by the dealer and signed by the owner or operator when the Bobcat loader is delivered. An explanation of the form must be given to the owner. Make sure it is filled out completely **[Figure 3]**.

LOADER IDENTIFICATION



B-19872A



B-19875A

* Option or Field Accessory

† Many buckets and other attachments are available.

● ROPS, FOPS - Roll Over Protective Structure per SAE / ISO 3471, and Falling Object Protective Structure ISO 3449, Level I. Level II is available.



Bobcat®

Dear

**Thanks very much for your visiting and
patience.**

Want to get more information,

Please click here, Go back to the page.

**After your payment, you will have instant access to
your download.**

The Download Link will also be sent to your e-mail.

You will get the complete manual

Have any questions

please write to me

admin@servicemanualperfect.com